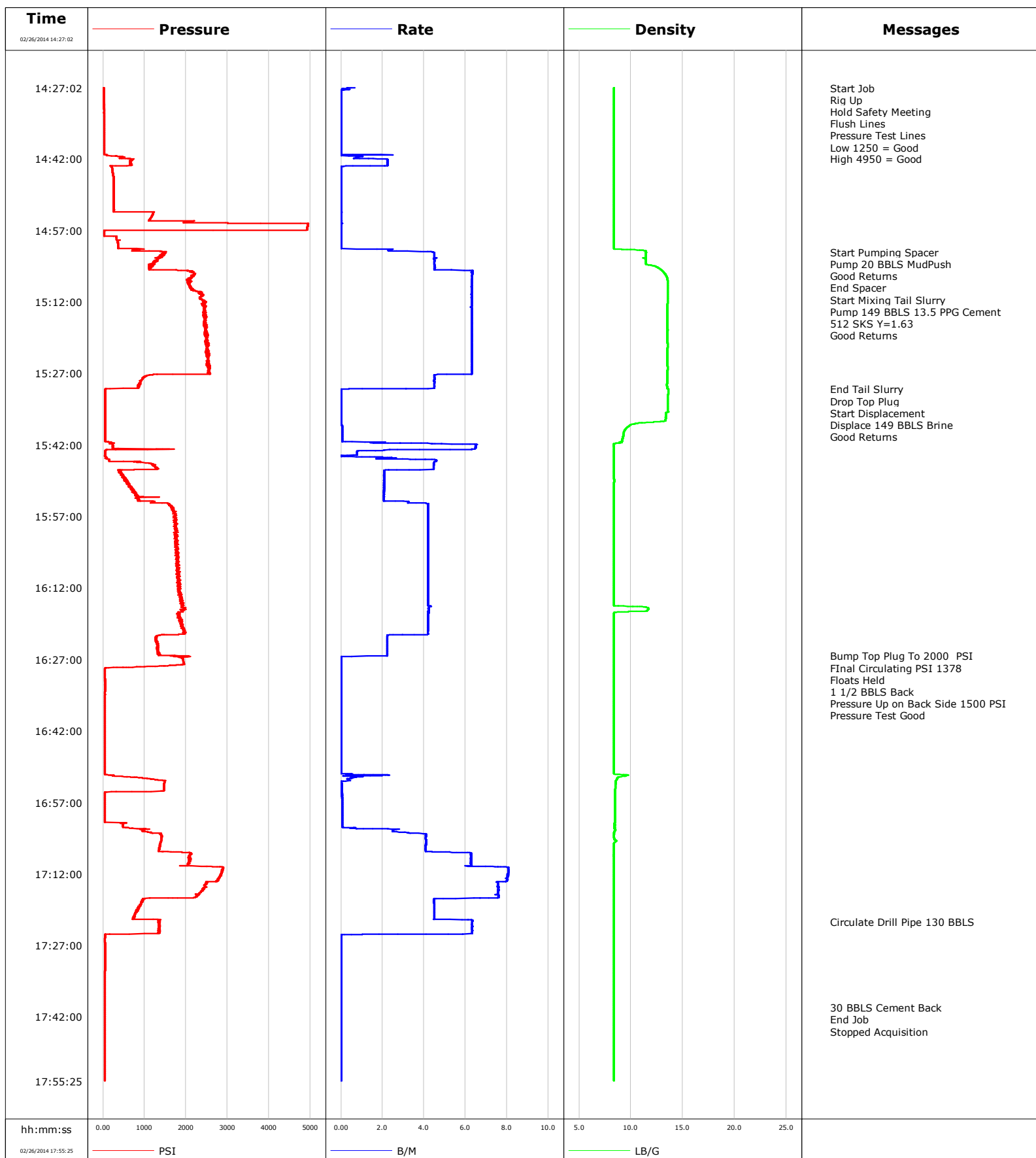


**Well** Razor Fed 26J-2310B  
**Field** Wildcat  
**Engineer** Justin Zika  
**Country** United States

**Client** Whiting Oil Gas  
**SIR No.**  
**Job Type** 4.5" Liner  
**Job Date** 02-26-2014



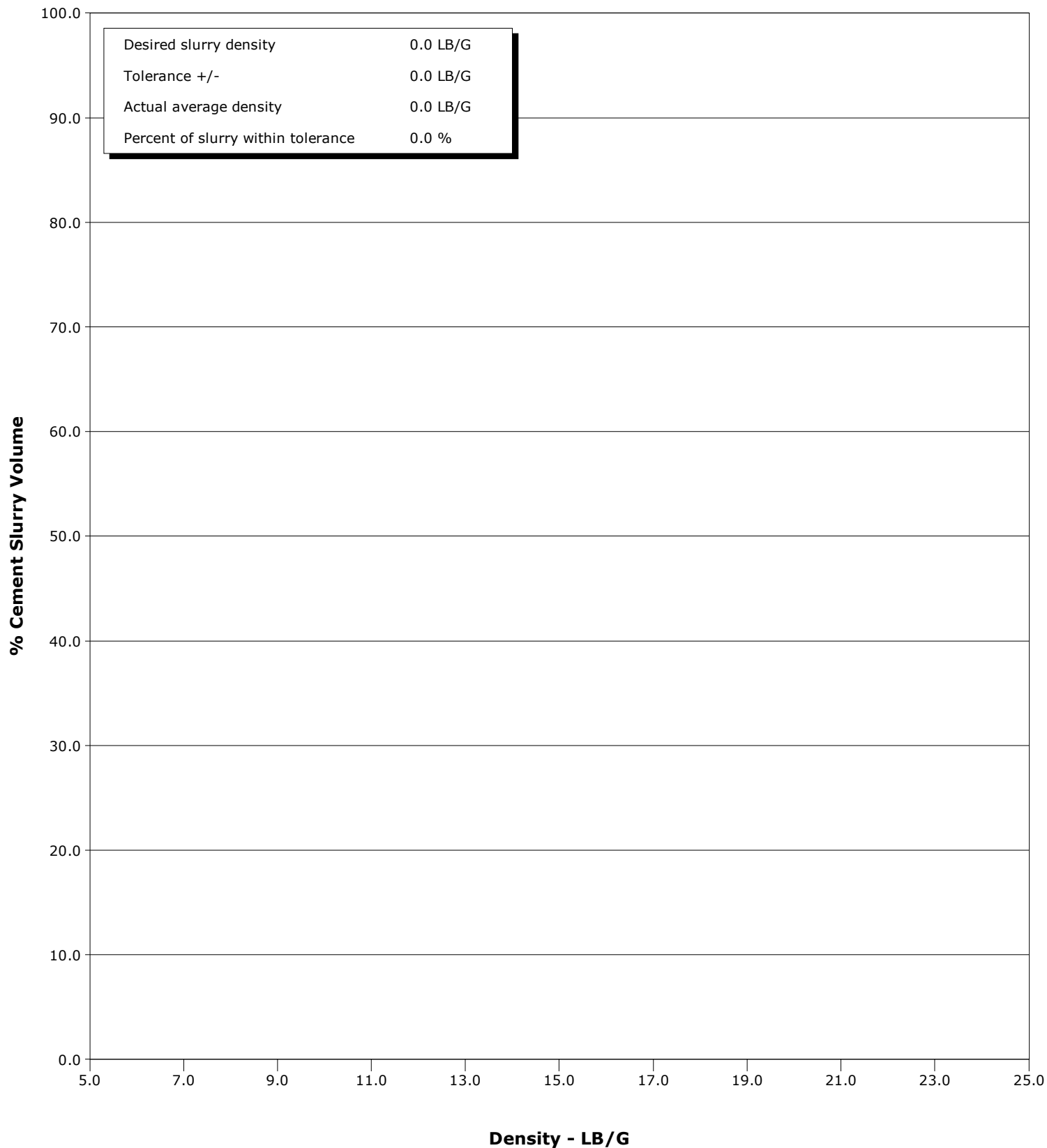
# Schlumberger

## Cementing Qa/Qc Density Report

**Well** Razor Fed 26J-2310B  
**Field** Wildcat  
**Engineer** Justin Zika  
**Country** United States

**Client** Whiting OII Gas  
**SIR No.**  
**Job Type** 4.5" Liner  
**Job Date** 02-26-2014

- 03/06/1972 12:17:44 to 03/06/1972 12:21:28



Page 1 of 5

Well Razor Fed 26J-2310B 26J-2310B			Field Wildcat		Job Start Feb/26/2014		Customer Whiting Oil & Gas		Job Number 1918548	
Date	Time 24-hr clock	Treating Pressure PSI	Flow Rate B/M	Density LB/G	Volume BBL	Message				
02/26/2014	14:41:58	603	1.3	8.35	0.9					
02/26/2014	14:43:38	204	0.0	8.34	4.3					
02/26/2014	14:45:18	244	0.0	8.34	4.3					
02/26/2014	14:46:58	259	0.0	8.34	4.3					
02/26/2014	14:48:38	260	0.0	8.35	4.3					
02/26/2014	14:50:18	260	0.0	8.34	4.3					
02/26/2014	14:51:58	261	0.0	8.35	4.3					
02/26/2014	14:53:38	1198	0.0	8.35	4.3					
02/26/2014	14:55:18	2019	0.0	8.34	4.3					
02/26/2014	14:56:58	2662	0.0	8.34	4.3					
02/26/2014	14:58:38	323	0.0	8.35	4.3					
02/26/2014	15:00:18	362	0.0	8.35	4.3					
02/26/2014	15:01:32					Start Pumping Spacer				
02/26/2014	15:01:32	1456	4.4	11.39	6.1					
02/26/2014	15:01:58	1412	4.5	11.46	8.0					
02/26/2014	15:02:09					Pump 20 BBLS MudPush				
02/26/2014	15:02:09					Good Returns				
02/26/2014	15:02:09	1477	4.5	11.47	8.8					
02/26/2014	15:03:38	1261	4.5	11.46	15.5					
02/26/2014	15:04:45					End Spacer				
02/26/2014	15:04:45	1158	4.5	12.56	20.5					
02/26/2014	15:05:18	1752	4.6	12.93	23.0					
02/26/2014	15:05:58					Start Mixing Tail Slurry				
02/26/2014	15:05:58	2197	6.3	13.21	27.2					
02/26/2014	15:06:02					Pump 149 BBLS 13.5 PPG Cement				
02/26/2014	15:06:02	2217	6.3	13.22	27.6					
02/26/2014	15:06:03					512 SKS Y=1.63				
02/26/2014	15:06:03					Good Returns				
02/26/2014	15:06:03	2217	6.3	13.23	27.7					
02/26/2014	15:06:58	2086	6.3	13.49	33.5					
02/26/2014	15:08:38	2088	6.3	13.54	44.0					
02/26/2014	15:10:18	2383	6.3	13.55	54.5					
02/26/2014	15:11:58	2434	6.3	13.53	65.0					
02/26/2014	15:13:38	2464	6.3	13.51	75.5					
02/26/2014	15:15:18	2483	6.3	13.49	86.0					
02/26/2014	15:16:58	2435	6.3	13.51	96.5					
02/26/2014	15:18:38	2466	6.3	13.52	107.0					
02/26/2014	15:20:18	2477	6.3	13.52	117.5					
02/26/2014	15:21:58	2497	6.3	13.52	128.0					
02/26/2014	15:23:38	2525	6.3	13.50	138.5					
02/26/2014	15:25:18	2584	6.3	13.52	149.0					
02/26/2014	15:26:58	2520	6.3	13.51	159.6					
02/26/2014	15:28:38	916	4.5	13.52	167.5					
02/26/2014	15:30:16					End Tail Slurry				
02/26/2014	15:30:16	63	0.4	13.59	174.6					
02/26/2014	15:30:18	60	0.1	13.59	174.6					
02/26/2014	15:30:19					Drop Top Plug				
02/26/2014	15:30:19	59	0.0	13.59	174.6					
02/26/2014	15:30:20					Start Displacement				
02/26/2014	15:30:20	59	0.0	13.59	174.6					
02/26/2014	15:30:25					Displace 149 BBLS Brine				
02/26/2014	15:30:25					Good Returns				
02/26/2014	15:30:25	56	0.0	13.59	174.6					
02/26/2014	15:31:58	56	0.0	13.57	174.6					

Well Razor Fed 26J-2310B 26J-2310B			Field Wildcat		Job Start Feb/26/2014		Customer Whiting Oil & Gas		Job Number 1918548	
Date	Time 24-hr clock	Treating Pressure PSI	Flow Rate B/M	Density LB/G	Volume BBL	Message				
02/26/2014	15:35:18	58	0.0	13.37	174.6					
02/26/2014	15:36:58	58	0.0	13.29	174.6					
02/26/2014	15:38:38	59	0.1	9.49	174.7					
02/26/2014	15:40:18	57	0.1	9.23	174.8					
02/26/2014	15:41:58	243	6.5	8.33	177.1					
02/26/2014	15:43:38	50	0.8	8.34	184.4					
02/26/2014	15:45:18	146	4.6	8.34	187.3					
02/26/2014	15:46:58	1334	4.5	8.34	194.8					
02/26/2014	15:48:38	497	2.1	8.35	198.8					
02/26/2014	15:50:18	631	2.1	8.36	202.3					
02/26/2014	15:51:58	781	2.1	8.35	205.7					
02/26/2014	15:53:38	845	2.1	8.34	209.2					
02/26/2014	15:55:18	1676	4.2	8.34	215.4					
02/26/2014	15:56:58	1709	4.2	8.34	222.4					
02/26/2014	15:58:38	1755	4.2	8.34	229.4					
02/26/2014	16:00:18	1768	4.2	8.34	236.4					
02/26/2014	16:01:58	1784	4.2	8.34	243.4					
02/26/2014	16:03:38	1787	4.2	8.34	250.4					
02/26/2014	16:05:18	1800	4.2	8.34	257.4					
02/26/2014	16:06:58	1760	4.2	8.34	264.4					
02/26/2014	16:08:38	1850	4.2	8.35	271.4					
02/26/2014	16:10:18	1813	4.2	8.35	278.4					
02/26/2014	16:11:58	1843	4.2	8.35	285.4					
02/26/2014	16:13:38	1846	4.2	8.35	292.4					
02/26/2014	16:15:18	1875	4.2	8.34	299.4					
02/26/2014	16:16:58	1926	4.2	10.13	306.4					
02/26/2014	16:18:38	1893	4.2	8.34	313.4					
02/26/2014	16:20:18	1949	4.2	8.34	320.4					
02/26/2014	16:21:58	1357	2.2	8.34	327.1					
02/26/2014	16:23:38	1320	2.2	8.34	330.8					
02/26/2014	16:25:18	1333	2.2	8.34	334.6					
02/26/2014	16:26:18					Bump Top Plug To 2000 PSI				
02/26/2014	16:26:18	1620	2.2	8.34	336.8					
02/26/2014	16:26:20					Final Circulating PSI 1378				
02/26/2014	16:26:20	2043	0.5	8.34	336.8					
02/26/2014	16:26:58	1923	0.0	8.34	336.8					
02/26/2014	16:28:38	628	0.0	8.34	336.8					
02/26/2014	16:28:49					Floats Held				
02/26/2014	16:28:49					1 1/2 BBLS Back				
02/26/2014	16:28:49	52	0.0	8.34	336.8					
02/26/2014	16:30:18	47	0.0	8.34	336.8					
02/26/2014	16:31:34					Pressure Up on Back Side 1500 PSI				
02/26/2014	16:31:34					Pressure Test Good				
02/26/2014	16:31:34	48	0.0	8.34	336.8					
02/26/2014	16:31:58	48	0.0	8.34	336.8					
02/26/2014	16:33:38	48	0.0	8.34	336.8					
02/26/2014	16:35:18	46	0.0	8.34	336.8					
02/26/2014	16:36:58	45	0.0	8.35	336.8					
02/26/2014	16:38:38	45	0.0	8.35	336.8					
02/26/2014	16:40:18	45	0.0	8.35	336.8					
02/26/2014	16:41:58	45	0.0	8.35	336.8					
02/26/2014	16:43:38	45	0.0	8.35	336.8					
02/26/2014	16:45:18	44	0.0	8.35	336.8					
02/26/2014	16:46:58	44	0.0	8.35	336.8					

Well Razor Fed 26J-2310B 26J-2310B			Field Wildcat		Job Start Feb/26/2014		Customer Whiting Oil & Gas		Job Number 1918548	
Date	Time 24-hr clock	Treating Pressure PSI	Flow Rate B/M	Density LB/G	Volume BBL	Message				
02/26/2014	16:50:18	43	0.0	8.35	336.8					
02/26/2014	16:51:58	1067	0.5	8.66	337.7					
02/26/2014	16:53:38	1471	0.0	8.50	337.9					
02/26/2014	16:55:18	43	0.0	8.45	338.0					
02/26/2014	16:56:58	43	0.1	8.44	338.1					
02/26/2014	16:58:38	44	0.1	8.44	338.2					
02/26/2014	17:00:18	43	0.1	8.43	338.3					
02/26/2014	17:01:58	474	0.1	8.43	338.4					
02/26/2014	17:03:38	1377	4.1	8.38	341.8					
02/26/2014	17:05:18	1398	4.1	8.47	348.6					
02/26/2014	17:06:58	1357	4.1	8.34	355.4					
02/26/2014	17:08:38	2066	6.3	8.34	364.9					
02/26/2014	17:10:18	1986	6.3	8.34	375.3					
02/26/2014	17:11:58	2863	8.0	8.34	388.5					
02/26/2014	17:13:38	2502	7.8	8.34	401.8					
02/26/2014	17:15:18	2395	7.6	8.34	414.5					
02/26/2014	17:16:58	2204	7.6	8.34	427.1					
02/26/2014	17:18:38	903	4.5	8.34	435.0					
02/26/2014	17:20:18	777	4.5	8.34	442.5					
02/26/2014	17:21:58	1364	6.3	8.34	450.7					
02/26/2014	17:22:00					Circulate Drill Pipe 130 BBLS				
02/26/2014	17:22:00	1370	6.3	8.34	450.9					
02/26/2014	17:23:38	1361	6.3	8.34	461.2					
02/26/2014	17:25:18	54	0.0	8.34	467.6					
02/26/2014	17:26:58	48	0.0	8.34	467.6					
02/26/2014	17:28:38	48	0.0	8.34	467.6					
02/26/2014	17:30:18	48	0.0	8.34	467.6					
02/26/2014	17:31:58	48	0.0	8.34	467.6					
02/26/2014	17:33:38	45	0.0	8.34	467.6					
02/26/2014	17:35:18	44	0.0	8.34	467.6					
02/26/2014	17:36:58	43	0.0	8.34	467.6					
02/26/2014	17:38:38	42	0.0	8.35	467.6					
02/26/2014	17:39:58					30 BBLS Cement Back				
02/26/2014	17:39:58	42	0.0	8.35	467.6					
02/26/2014	17:40:18	41	0.0	8.35	467.6					
02/26/2014	17:41:15					End Job				
02/26/2014	17:41:15	41	0.0	8.35	467.6					
02/26/2014	17:41:58	40	0.0	8.35	467.6					
02/26/2014	17:43:38	40	0.0	8.35	467.6					
02/26/2014	17:45:18	39	0.0	8.35	467.6					
02/26/2014	17:46:58	39	0.0	8.35	467.6					
02/26/2014	17:48:38	38	0.0	8.35	467.6					
02/26/2014	17:50:18	37	0.0	8.35	467.6					
02/26/2014	17:51:58	37	0.0	8.35	467.6					
02/26/2014	17:53:38	37	0.0	8.35	467.6					
02/26/2014	17:55:18	36	0.0	8.35	467.6					

<b>Well</b> Razor Fed 26J-2310B 26J-2310B	<b>Field</b> Wildcat	<b>Job Start</b> Feb/26/2014	<b>Customer</b> Whiting Oil & Gas	<b>Job Number</b> 1918548
--	-------------------------	---------------------------------	--------------------------------------	------------------------------

Post Job Summary

Average Pump Rates,					Volume of Fluid Injected, bbl			
Slurry	N2		Mud	Maximum Rate	Total Slurry 149.0	Mud	Spacer 25.0	N2
Treating Pressure Summary, psi					Breakdown Fluid			
Maximum	Final 1378	Average	Bump Plug to 2000	Breakdown	Type	Volume	Density	
Avg. N2 Percent	Designed Slurry Volume 149.0 bbl		Displacement 165.0 bbl	Mix Water Temp 46 degF	Cement Circulated to Surface? <input checked="" type="checkbox"/>	Volume 30.0 bbl		
Customer or Authorized Representative Kyle Renton				Schlumberger Supervisor Justin Zika		Washed Thru Perfs <input type="checkbox"/>	To	
						Circulation Lost <input type="checkbox"/>	Job Completed <input checked="" type="checkbox"/>	
						-		-