

# PEAKS K26-77-1HN

**TVD**  
5":100'

**Company:** Noble Energy Inc  
**Well Name:** PEAKS K26-77-1HN  
**UWI or LSD:** 05-123-38238  
**Rig Id:** H&P 273  
**State:** Colorado  
**County/Parish:** Weld  
**Country:** USA  
**Survey Company:** Ensign Directional  
**Job number:** 139440  
**Dir. Driller Days** Breven Williams  
**Dir. Driller Nights** Kody Wood  
**MWD/LWD Days** Tyler Teague  
**MWD/LWD Nights** Jamey House

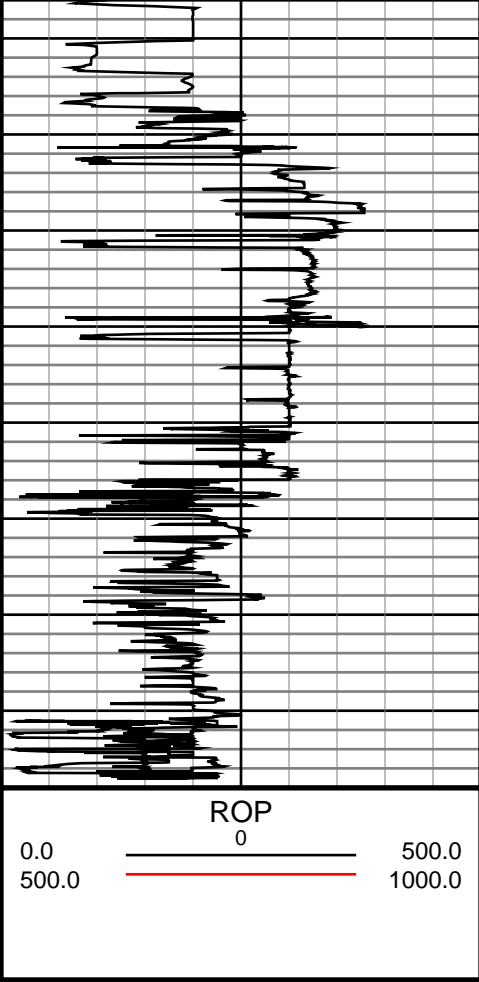
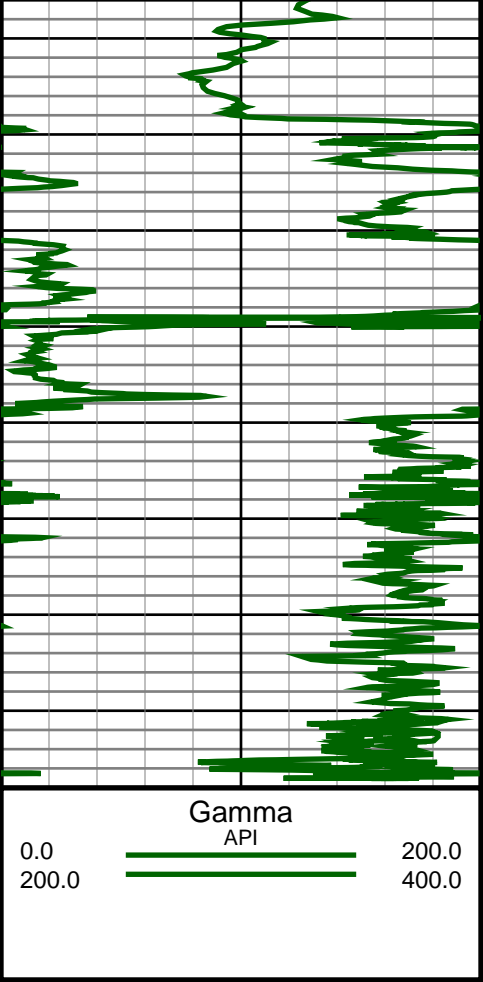
**Log measurements:**  
**Depth measured from:**  
**Maximum temperature:** 242.6

**Depth** **Date**  
**Start:** 67'4 ft 02/21/2014  
**End:** 12100 ft 02/26/2014

Casing	Depth	Size	Mud Type:	Elevations
Surface:	66.4	9.625	Density:	KB: 4811
Intermediate:	7528	7	Viscosity:	GL: 4787
			Rm:	Rmf:
			Rmc:	DF: 4811

Run	Bit Size	Offsets	Gamma Survey	Start	Depths	End	Start	Dates	End
1	8.75	-1.00	-1.00	0	674		02/20/2014		02/21/2014
2	8.75	66.53	61.53	674	5886		02/21/2014		02/22/2014
3	8.75	61.84	56.84	5886	7536		02/23/2014		02/23/2014
4	6.125	71.15	66.15	7536	12100		02/24/2014		02/26/2014
5									
6									
7									
8									
9									
10									





#75 MD(7436.00) Inc(80.3) Azm(0.3) TVD(7060.09) VS(1367.43) NS(1319.47) EW(591.81)
#76 MD(7481.00) Inc(84.9) Azm(359.9) TVD(7065.69) VS(1411.90) NS(1364.11) EW(591.89)
#79 MD(7765.00) Inc(90.0) Azm(0.3) TVD(7072.34) VS(1694.56) NS(1647.93) EW(591.88)
#81 MD(7954.00) Inc(88.2) Azm(359.7) TVD(7077.28) VS(1882.67) NS(1836.86) EW(591.39)
#84 MD(8239.00) Inc(90.4) Azm(0.1) TVD(7081.43) VS(2166.42) NS(2121.80) EW(591.06)
#86 MD(8428.00) Inc(87.9) Azm(359.7) TVD(7085.62) VS(2354.52) NS(2310.73) EW(590.24)
#90 MD(8808.00) Inc(89.4) Azm(359.0) TVD(7090.18) VS(2732.40) NS(2690.61) EW(585.18)
#92 MD(8997.00) Inc(87.9) Azm(358.7) TVD(7096.04) VS(2920.30) NS(2879.50) EW(582.79)
#94 MD(9187.00) Inc(88.5) Azm(358.3) TVD(7102.01) VS(3108.86) NS(3069.32) EW(577.32)
#103 MD(10040.00) Inc(90.1) Azm(0.3) TVD(7108.13) VS(3956.69) NS(3921.92) EW(562.92)
#107 MD(10420.00) Inc(88.2) Azm(1.0) TVD(7112.19) VS(4335.48) NS(4301.86) EW(567.31)
#109 MD(10609.00) Inc(88.2) Azm(0.3) TVD(7118.13) VS(4523.86) NS(4490.74) EW(570.36)
#111 MD(10799.00) Inc(87.6) Azm(358.9) TVD(7125.59) VS(4712.81) NS(4680.58) EW(569.03)
#112 MD(10894.00) Inc(87.5) Azm(358.3) TVD(7129.65) VS(4807.10) NS(4775.46) EW(566.71)
#124 MD(12030.00) Inc(89.4) Azm(359.0) TVD(7137.00) VS(5935.49) NS(5910.83) EW(540.51)