

COLUMBINE LOGGING

Scale: 5" / 100'
Measured Depth Log

Well Name Peaks K26-77-1HN

Location NWNW SEC 35 T4N R66W

State COLORADO

County WELD

Country UNITED STATES

Rig Number H&P 273

API Number 05-123-38238

Region DJ BASIN

Field HAMBERT

Spud Date 2/21/2014

Drilling Completed 2/22/2014

Surface Coordinates 770' FNL; 1035' FWL

Bottom Hole Coordinates 75' FNL; 1650' FWL

Ground Elevation 4787'

K.B. Elevation 4811'

Logged Interval 674' To 5886'

Total Depth 5886'

Formation NIOBRARA

Type of Drilling Fluid LSND

Operator

Company NOBLE ENERGY INC.

Address 1625 Broadway Suite 2200
Denver, CO 80202

Geologist

Name SARAH COMPTON

Company NOBLE ENERGY INC.

Address 1625 Broadway Suite 2200
Denver, CO 80202

Other

Wellsite Geologist #1: LAURA KELLOGG
Wellsite Geologist #2: TIM BRIGHT
Wellsite Geologist #3: JEREMY LOFTNESS

Wellsite Geological Services Provided By Columbine Logging Inc.

Rock Types

UNKNOWN	CEMENT	IGNEOUS	SHALE GRAY
CHALK	CHERT	LIMESTONE	SHALY SILTSTONE
MARLSTONE	CLAY CHOKO SAND	SIDERITE or LIMONITE	SILTSTONE
SANDSTONE	CLAYSTONE	METAMORPHIC	TILL
SHALY SANDSTONE	COAL	NO SAMPLE	TUFF
SILTY SHALE	CONGLOMERATE	SALT	WELDED TUFF
ANHYDRITE	DOLOMITE	SALT- PEPPER SAND	
BENTONITE	GRANITE	SHALE	
BRECCIA	GYPSUM	SHALE COLORED	

Accessories

Fossils

ALGAE
AMPHIPORA
BELEMNITE
BIOCLASTIC
BRACHIOPOD
BRYOZOA
CEPHALOPOD
CORAL
CRINOID
ECHINOID
FISH
FORAMINIFERA

Fossil

GASTROPOD
INOCERAMUS
OOLITE
OSTRACOD
PELECYPOD
PELLET
PISOLITE
PLANT REMAINS
PLANT SPORES
SCAPHOPOD
STROMATOPOROID

Minerals

Anhydritic

ARGILLACEOUS
ARGILLITE GRAIN
BENTONITE
BITUMENOUS SUBSTANCE
BRECCIA FRAGMENTS
CALCAREOUS
CARBONACEOUS FLAKES
CHTDK
CHTLT
COAL - THIN BEDS
DOLOMITIC
FELDSPAR
FERRUGINOUS PELLET

Ferruginous

GLAUCONITE
GYPSIFEROUS
HEAVY MINERAL
KAOLIN
MARLSTONE
MINERAL CRYSTALS
NODULES
PHOSPHATE PELLETS
PYRITE
SALT CAST
SANDY
SILICEOUS
SILTY

Tuffaceous

Stringer

ANHYDRITE STRINGER
BENTONITE STRINGER
COAL STRINGER
DOLOMITE STRINGER
GYPSUM STRINGER
LIMESTONE STRINGER
MARLSTONE (CALC) STRG
MARLSTONE (DOL) STRG
SANDSTONE STRINGER
SHALE STRINGER
SILTSTONE STRINGER

Other Symbols

Oil Show

DEAD
EVEN
QUESTIONABLE
SPOTTED STAINING

Porosity

EARTHY
FENESTRAL
FRACTURE
INTERCRYSTALLINE
INTEROOLITIC

Moldic

ORGANIC
PINPOINT
VUGGY

Engineering

BIT
CONNECTION (LEFT)
CONNECTION (RIGHT)
CONNECTION GAS
CORE - LOST
CORE - RECOVERED
DST INTERVAL

Fault

FORMATION TOP
GAS SHOW
MNDEPTH MN DEPTH
NORMAL FAULT
OIL SHOW
OVERTURNED STRATA
REVERSE FAULT
SIDEWALL CORE (LEFT)
SIDEWALL CORE (RIGHT)
SLIDE
SURVEY
TRIP GAS

Wireline Tested - Left

Wireline Tested - RT

Rounding

ANGULAR
ROUNDED
SUBANG
SUBRND

Textures

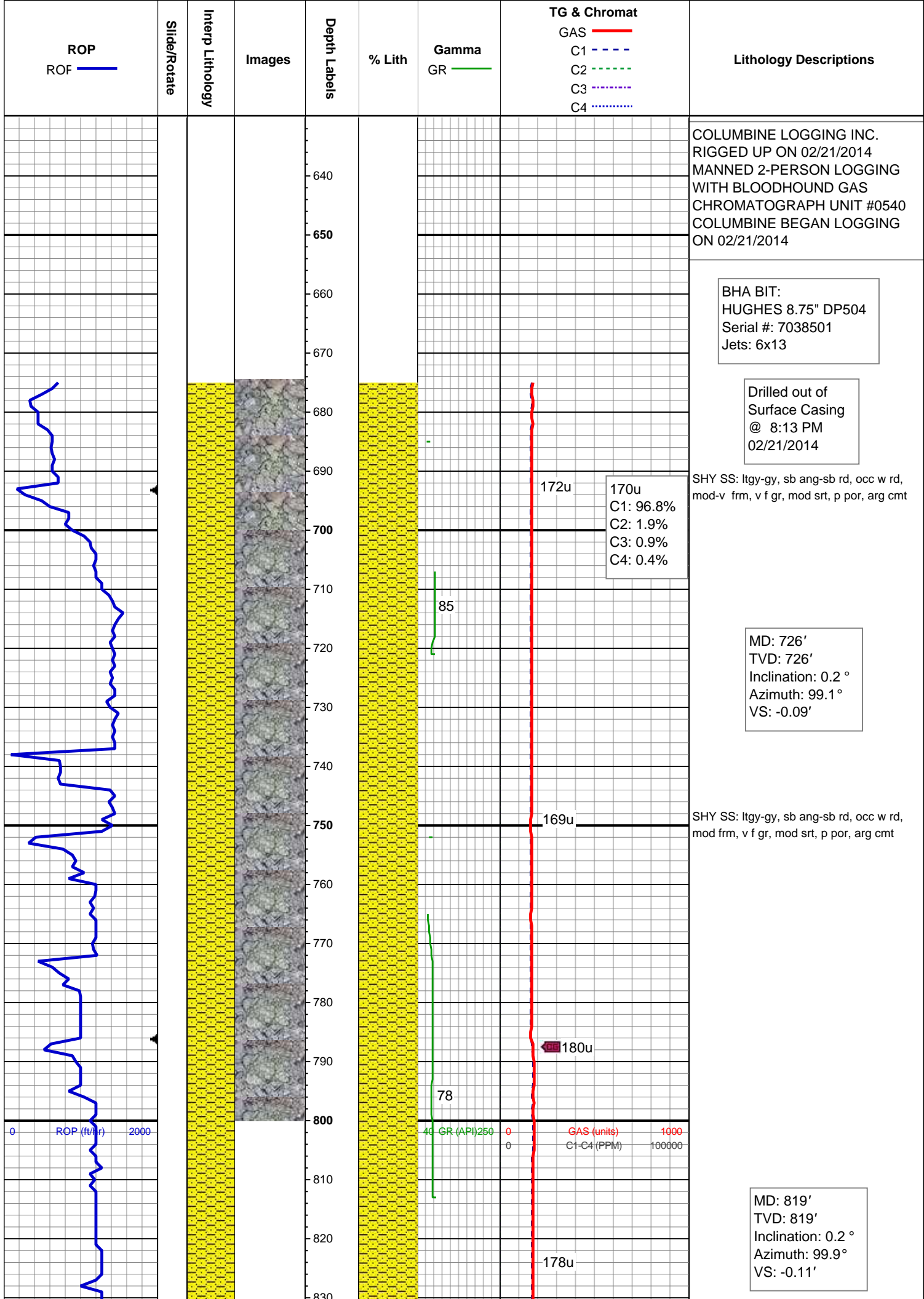
BOUNDSTONE
CHALKY
CRYPTOXLN

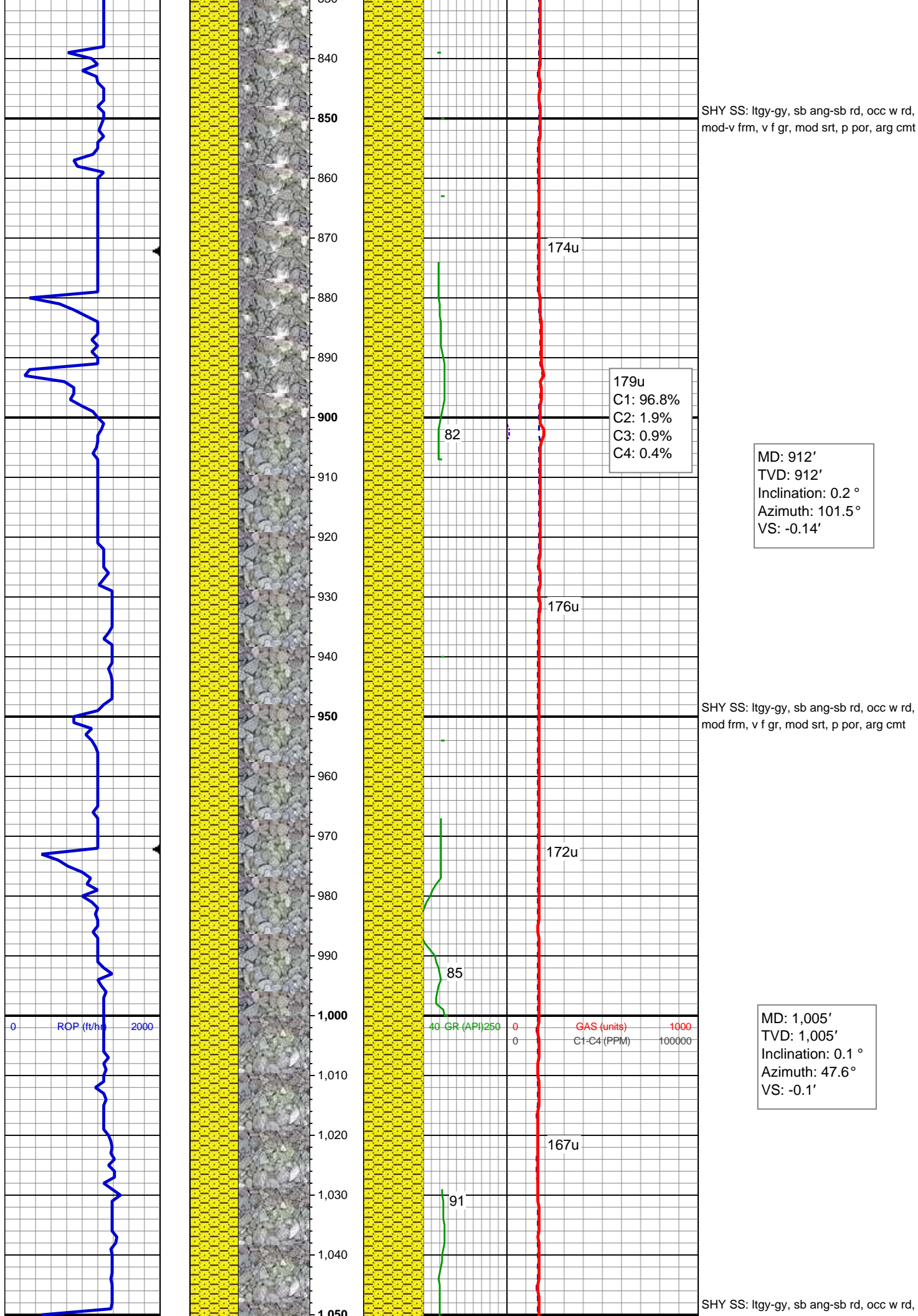
Earthy

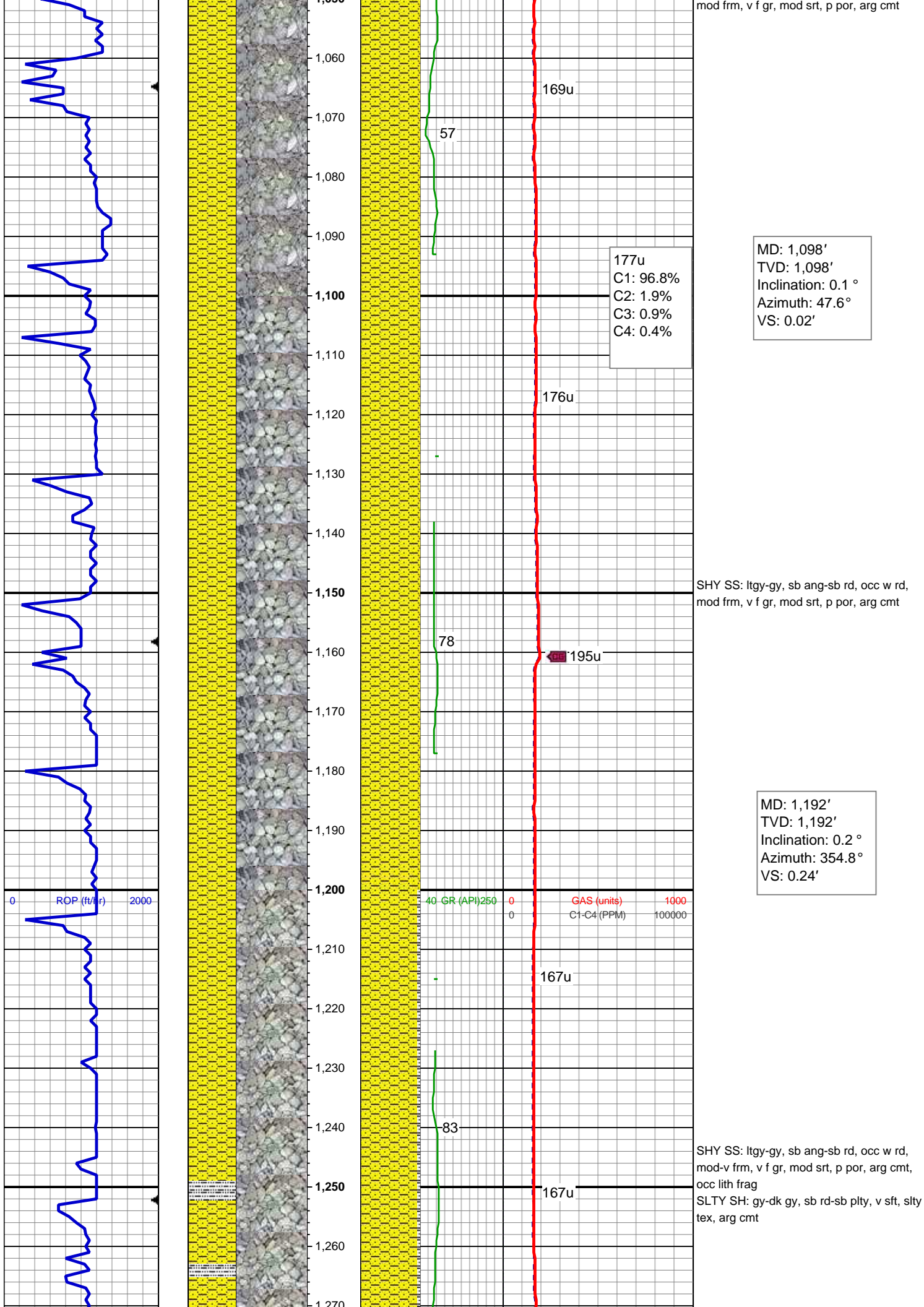
FINELYXLN
GRAINSTONE
LITHOGRAPHIC
MICROXLN
MUDSTONE
PACKSTONE
WACKESTONE

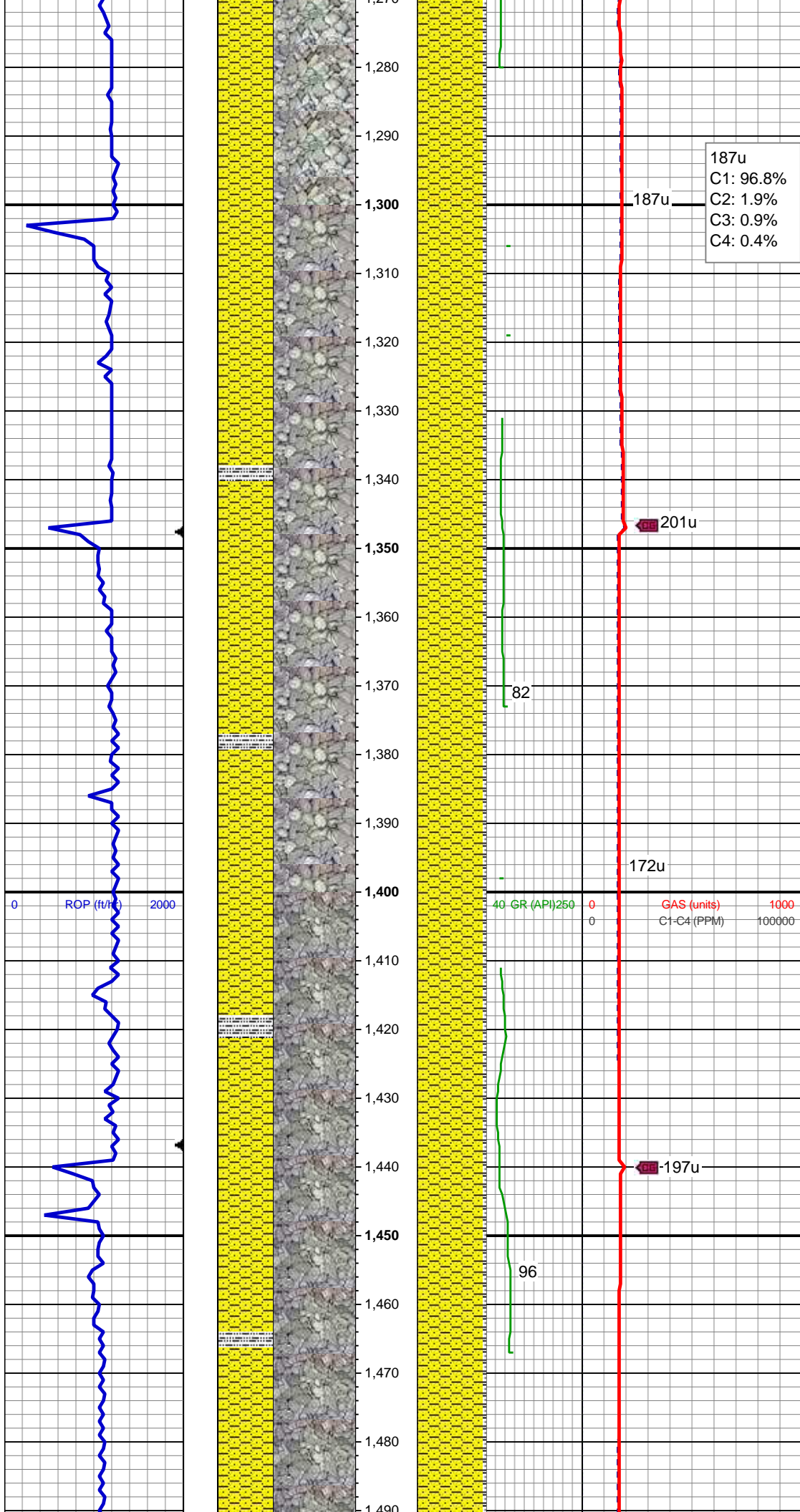
Sorting

MODERATE
POOR
WELL









MD: 1,284'
TVD: 1,284'
Inclination: 0.2 °
Azimuth: 353.9 °
VS: 0.56'

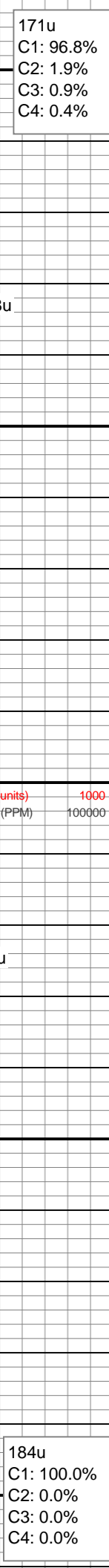
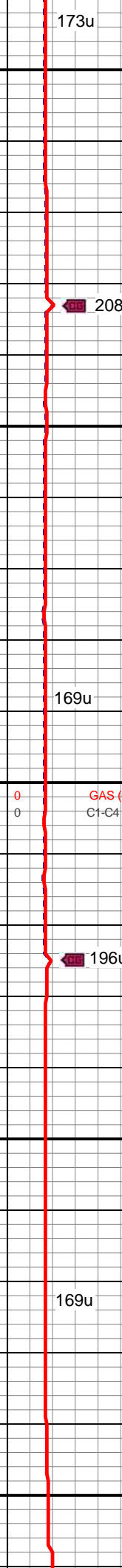
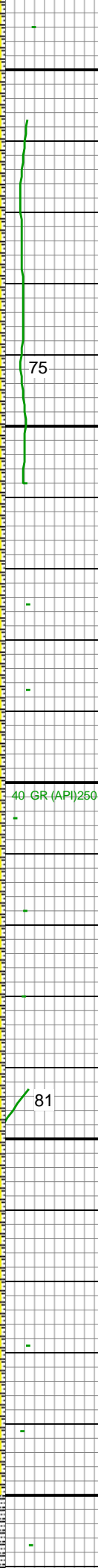
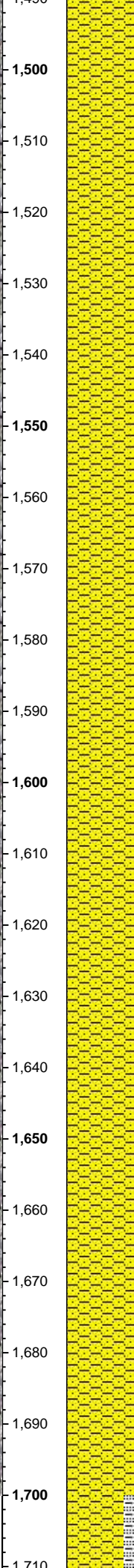
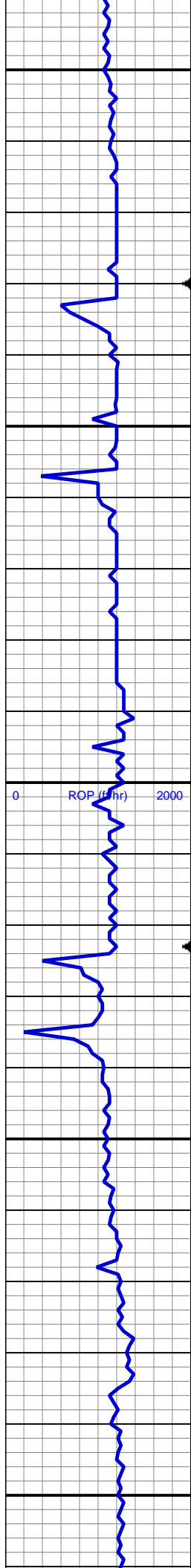
187u
C1: 96.8%
C2: 1.9%
C3: 0.9%
C4: 0.4%

SHY SS: ltgy-gy, sb ang-sb rd, occ w rd, mod-v frm, v f gr, mod srt, p por, arg cmt, occ lith frag
SLTY SH: gy-dk gy, sb rd-sb plty, v sft, slty tex, arg cmt

MD: 1,377'
TVD: 1,376.99'
Inclination: 0.4 °
Azimuth: 351.8 °
VS: 1.03'

SHY SS: ltgy-gy, sb ang-sb rd, occ w rd, mod-v frm, v f gr, mod srt, p por, arg cmt, occ lith frag
SLTY SH: gy-dk gy, sb rd-sb plty, v sft, slty tex, arg cmt

MD: 1,470'
TVD: 1,469.99'
Inclination: 0.4 °
Azimuth: 340.8 °
VS: 1.64'



171u
C1: 96.8%
C2: 1.9%
C3: 0.9%
C4: 0.4%

173u

208u

75

SHY SS: ltgy-gy, sb ang-sb rd, occ w rd, mod-v frm, v f gr, mod srt, p por, arg cmt, occ lith frag
SLTY SH: gy-dk gy, sb rd-sb plty, v sft, slty tex, arg cmt

MD: 1,563'
TVD: 1,562.99'
Inclination: 0.5 °
Azimuth: 344.1 °
VS: 2.32'

169u

40 GR (API) 250 0 0 GAS (units) 1000
C1-C4 (PPM) 100000

196u

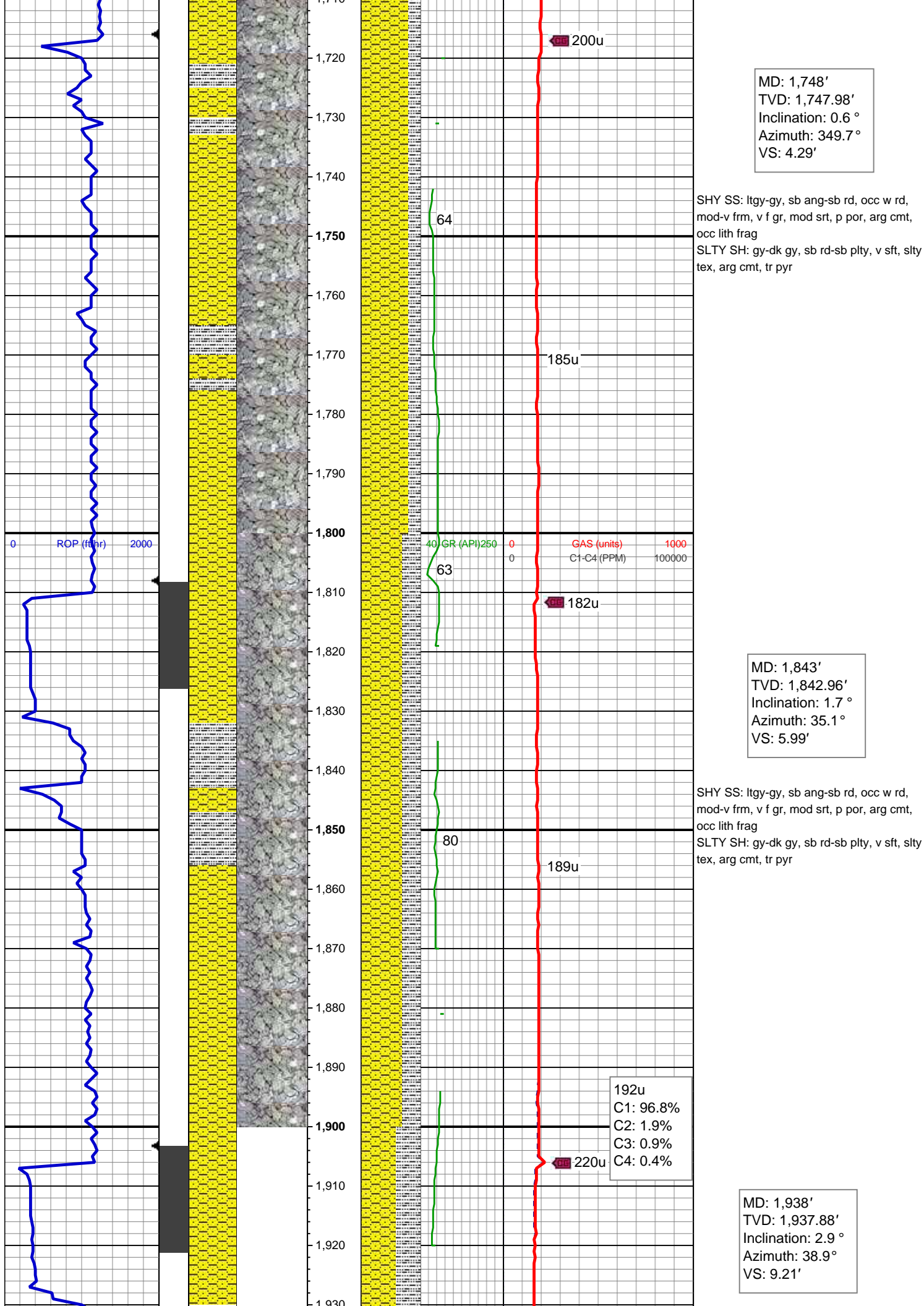
81

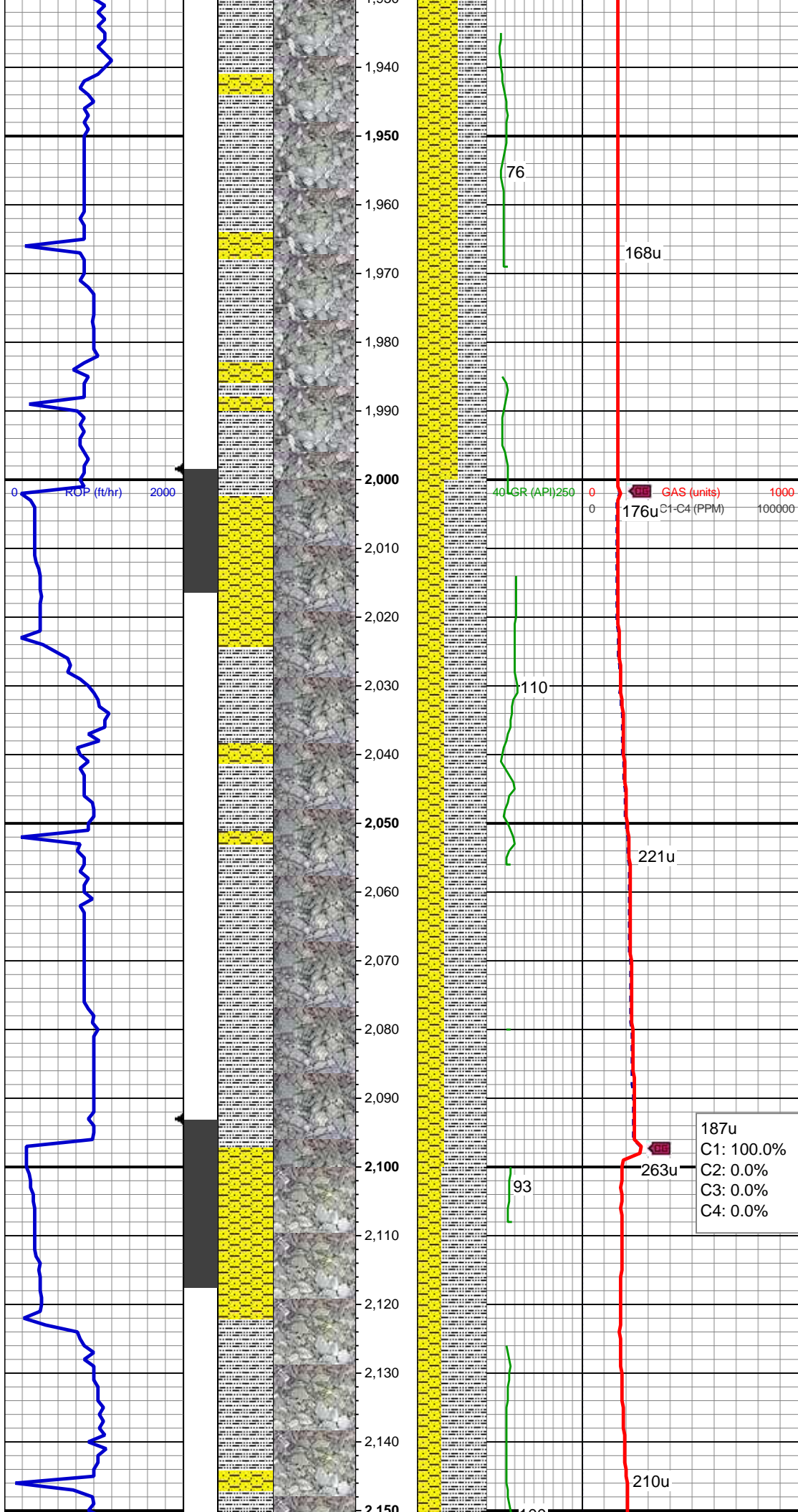
SHY SS: ltgy-gy, sb ang-sb rd, occ w rd, mod-v frm, v f gr, mod srt, p por, arg cmt, occ lith frag
SLTY SH: gy-dk gy, sb rd-sb plty, v sft, slty tex, arg cmt, tr pyr

MD: 1,656'
TVD: 1,655.98'
Inclination: 0.7 °
Azimuth: 1.2 °
VS: 3.26'

169u

184u
C1: 100.0%
C2: 0.0%
C3: 0.0%
C4: 0.0%





SHY SS: ltgy-gy, sb ang-sb rd, occ w rd, mod-v frm, v f gr, mod srt, p por, arg cmt, occ lith frag
SLTY SH: gy-dk gy, sb rd-sb plty, v sft, slty tex, arg cmt, tr pyr

WT IN 8.40/ OUT 8.40
VIS IN 26/ OUT 26

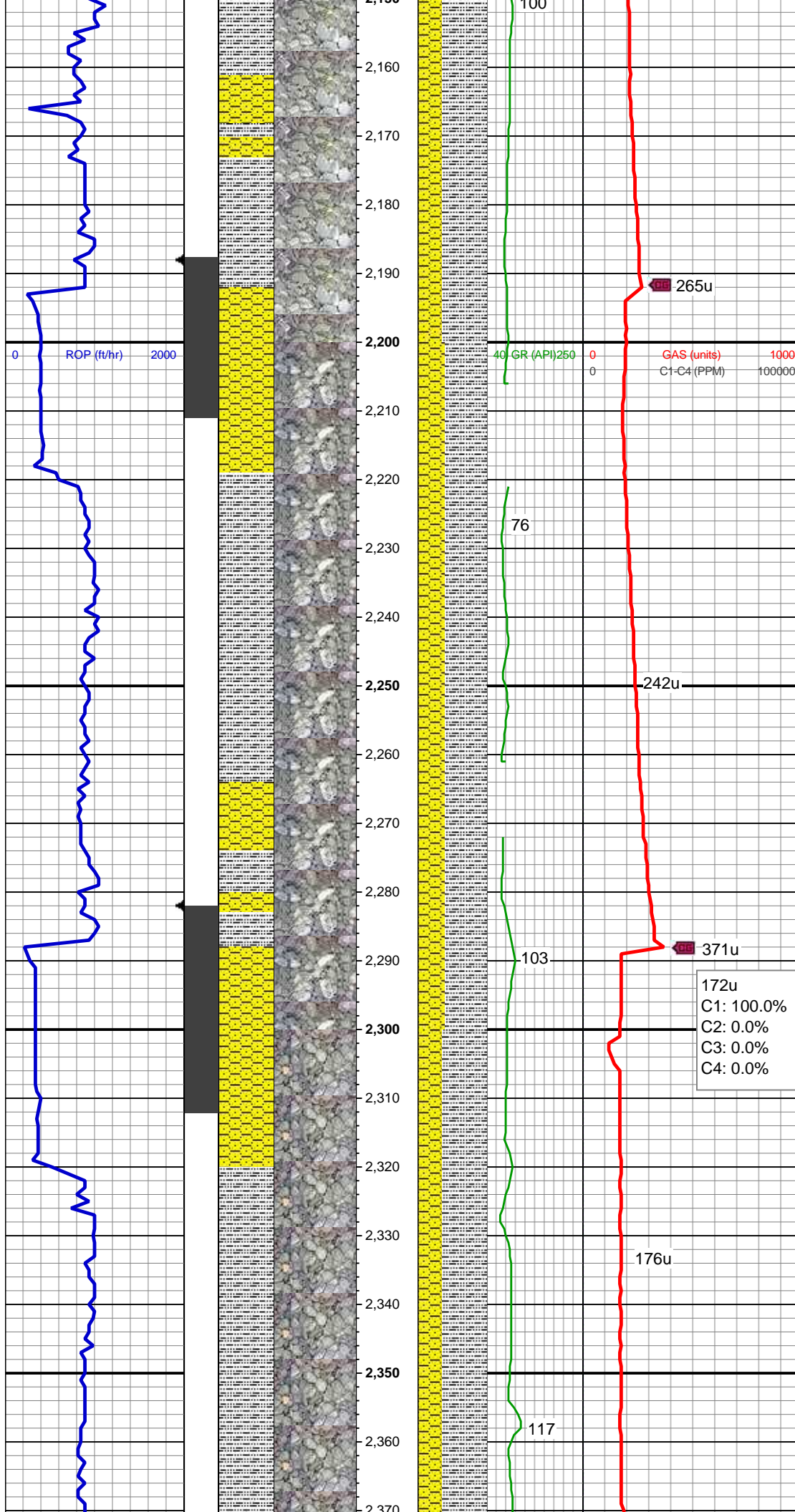
MD: 2,033'
TVD: 2,032.71'
Inclination: 3.9 °
Azimuth: 40.7 °
VS: 13.84'

SLTY SH: gy-dk gy, sb rd-sb plty, v sft, slty tex, arg cmt
SHY SS: ltgy-gy, sb ang-sb rd, occ w rd, mod-v frm, v f-f gr, mod srt, p por, arg cmt, occ lith frag, tr pyr

187u
C1: 100.0%
C2: 0.0%
C3: 0.0%
C4: 0.0%

MD: 2,127'
TVD: 2,126.41'
Inclination: 5.2 °
Azimuth: 38.6 °
VS: 19.99'

SLTY SH: gy-dk gy, sb rd-sb plty, v sft, slty tex, arg cmt
SHY SS: ltgy-gy, sb ang-sb rd, occ w rd



SHY SS: ltgy-gy, sb ang sb rd, occ w rd, mod-v frm, v f-f gr, mod srt, p por, arg cmt, occ lith frag, tr pyr

MD: 2,222'
TVD: 2,220.95'
Inclination: 6.2 °
Azimuth: 31.4 °
VS: 28.19'

SLTY SH: gy-dk gy, sb rd-sb plty, v sft, slty tex, arg cmt

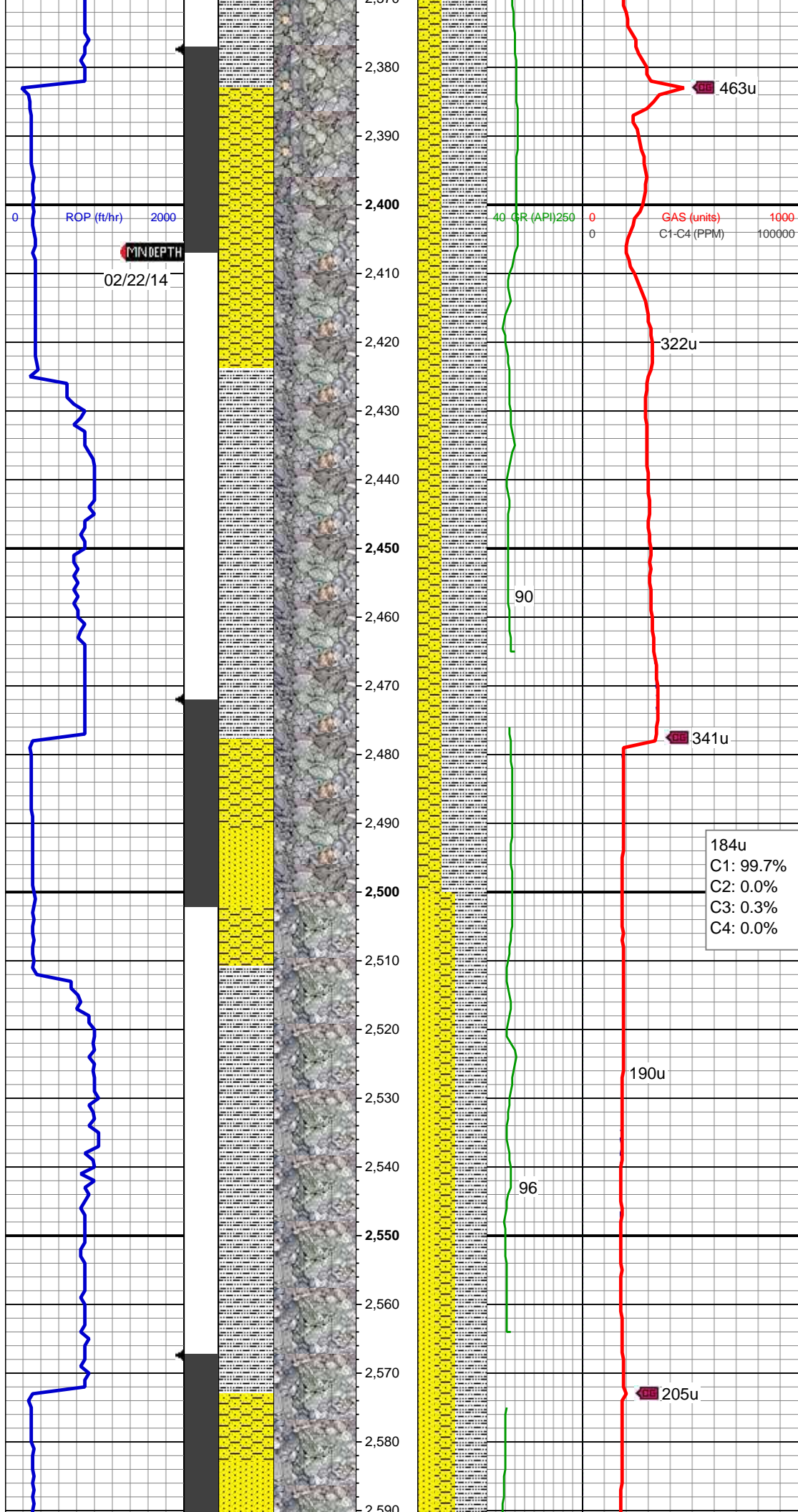
SHY SS: ltgy-gy, sb ang-sb rd, occ w rd, mod-v frm, v f-f gr, mod srt, p por, arg cmt, occ lith frag, tr pyr

172u
C1: 100.0%
C2: 0.0%
C3: 0.0%
C4: 0.0%

MD: 2,317'
TVD: 2,315.31'
Inclination: 7.1 °
Azimuth: 37.5 °
VS: 37.75'

SLTY SH: gy-dk gy, sb rd-sb plty, v sft, slty tex, arg cmt

SHY SS: ltgy-gy, sb ang-sb rd, occ w rd, mod-v frm, v f-f gr, mod srt, p por, arg cmt, occ lith frag, tr pyr



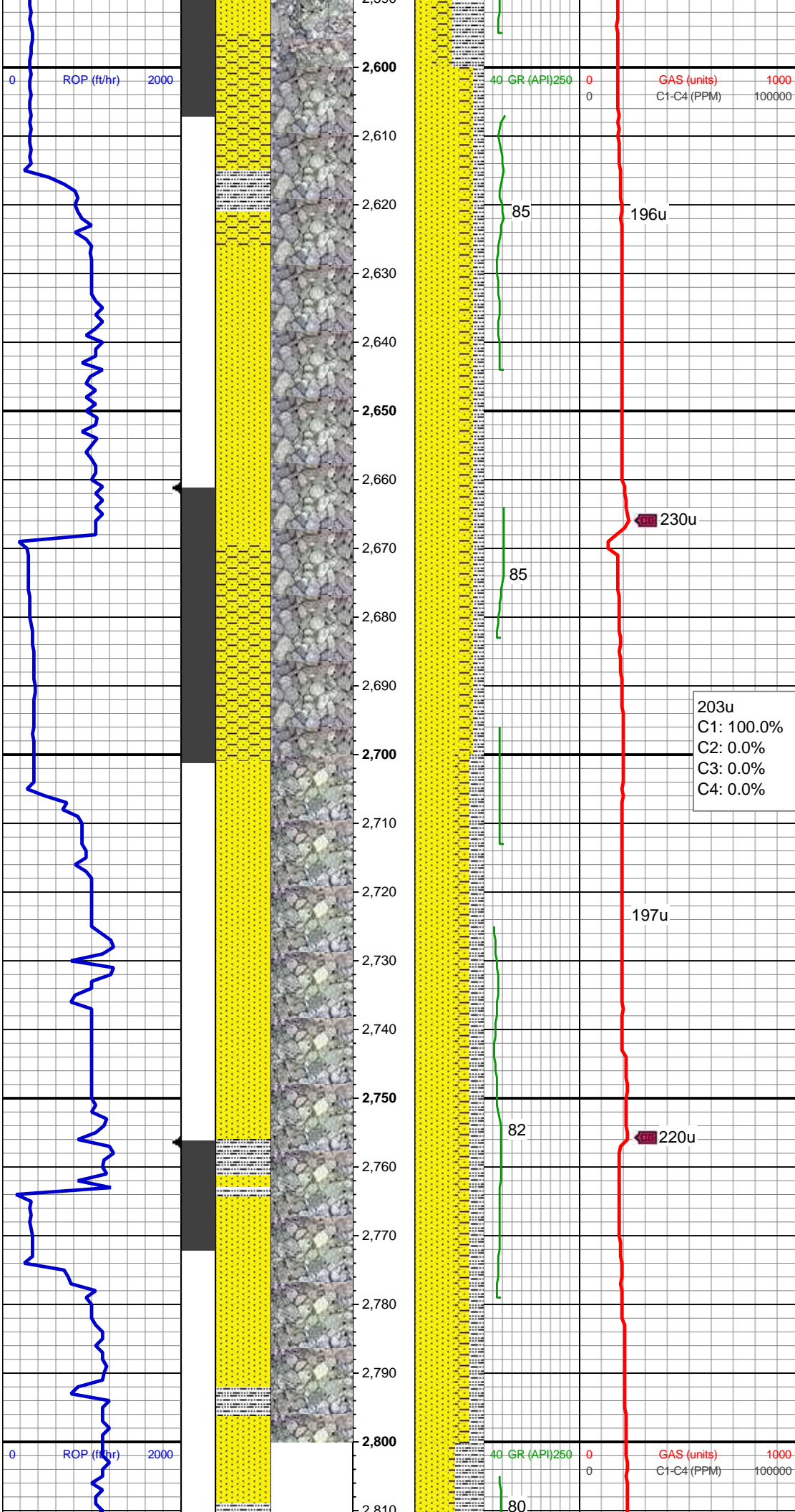
MD: 2,412'
TVD: 2,409.35'
Inclination: 9.1 °
Azimuth: 42.8 °
VS: 48.66'

SLTY SH: gy-dk gy, sb rd-sb plty, v sft-frm, slty tex, arg cmt
SHY SS: ltgy-gy, sb ang-sb rd, occ w rd, mod-v frm, v f-f gr, mod srt, p por, arg cmt, occ lith frag, tr pyr

184u
C1: 99.7%
C2: 0.0%
C3: 0.3%
C4: 0.0%

MD: 2,507'
TVD: 2,503.02'
Inclination: 10.1 °
Azimuth: 43.5 °
VS: 61.15'

SLTY SH: gy-dk gy, sb rd-sb plty, v sft-sft, slty tex, arg cmt
SHY SS: ltgy-gy, sb ang-sb rd, occ w rd, mod-v frm, v f gr, mod srt, p por, arg cmt
SS: ltgy, wh-clr, sb blkgy-sb ang, hd, fri, arg mtx, sl calc; tr pyr



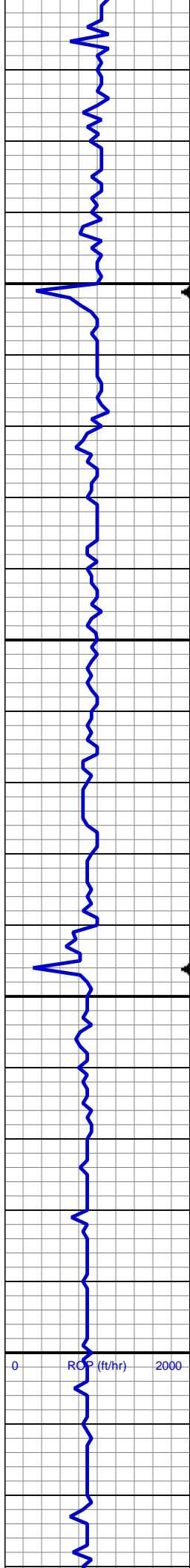
MD: 2,601'
TVD: 2,595.36'
Inclination: 11.5 °
Azimuth: 38.4 °
VS: 75.45'

SS: ltgy, wh-clr, sb blkly-sb ang, hd, fri,
arg mtx, sl calc,
SHY SS: ltgy-gy, sb ang-sb rd, occ w rd,
mod-v frm, v f gr, mod srt, p por, arg cmt
SLTY SH: gy-dk gy, sb rd-sb plty, v sft-sft,
sly tex, arg cmt

MD: 2,696'
TVD: 2,688.1'
Inclination: 13.5 °
Azimuth: 35.6 °
VS: 92.94'

SS: ltgy, wh-clr, sb blkly-sb ang, hd, fri,
arg mtx, sl calc,
SHY SS: ltgy-gy, sb ang-sb rd, occ w rd,
mod-v frm, v f gr, mod srt, p por, arg cmt
SLTY SH: gy-dk gy, sb rd-sb plty, v sft-sft,
sly tex, arg cmt

MD: 2,791'
TVD: 2,780.16'
Inclination: 15.1 °
Azimuth: 35.6 °
VS: 113.17'



2,810
2,820
2,830
2,840
2,850
2,860
2,870
2,880
2,890
2,900
2,910
2,920
2,930
2,940
2,950
2,960
2,970
2,980
2,990
3,000
3,010
3,020
3,030

223u
237u
75
246u
C1: 100.0%
C2: 0.0%
C3: 0.0%
C4: 0.0%
247u
97
276u
82
259u

SS: ltgy, wh-clr, sb blk-y-sb ang, hd, fri,
arg mtx, sl calc,
SLTY SH: gy-dk gy, sb rd-sb plty, v sft-sft,
silty tex, arg cmt
SHY SS: ltgy-gy, sb ang-sb rd, occ w rd,
mod-v frm, v f gr, mod srt, p por, arg cmt;
tr pyr

MD: 2,886'
TVD: 2,872.03'
Inclination: 14.4 °
Azimuth: 33.7 °
VS: 134.22'

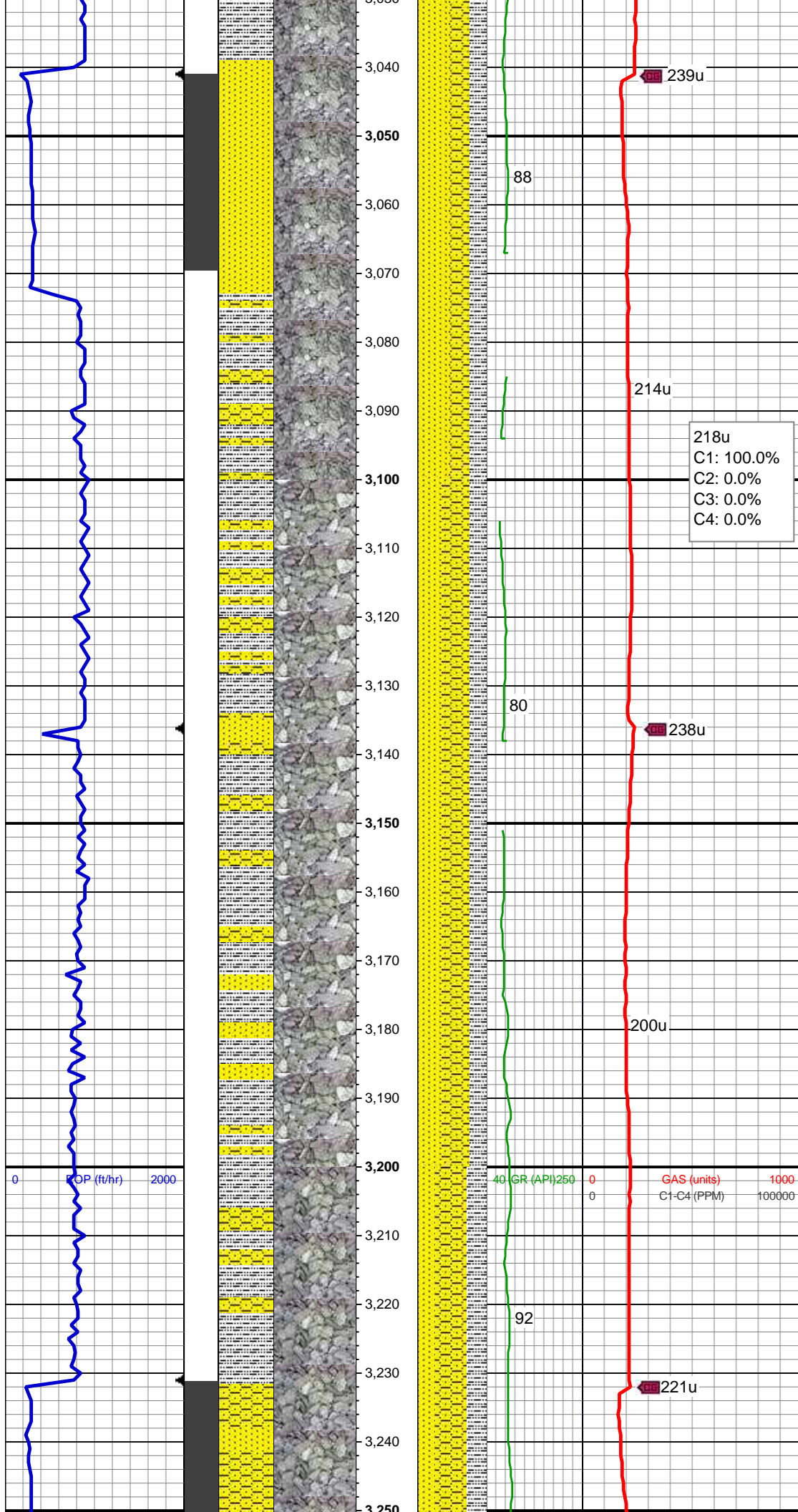
SS: ltgy, wh-clr, sb blk-y-sb ang, hd, fri,
arg mtx, sl calc,
SLTY SH: gy-dk gy, sb rd-sb plty, v sft-sft,
silty tex, arg cmt
SHY SS: ltgy-gy, sb ang-sb rd, occ w rd,
mod-v frm, v f gr, mod srt, p por, arg cmt;
tr pyr

MD: 2,981'
TVD: 2,964.51'
Inclination: 12 °
Azimuth: 33.5 °
VS: 153.29'

40 GR (API) 250
0
0

GAS (units)
C1-C4 (PPM)

1000
100000



SS: ltgy, wh-clr, sb blkly-sb ang, hd, fri,
arg mtx, sl calc,
SHY SS: ltgy-gy, sb ang-sb rd, occ w rd,
mod-v frm, v f gr, mod srt, p por, arg cmt
SLTY SH: gy-dk gy, sb rd-sb plty, v sft-sft,
sly tex, arg cmt; tr pyr

MD: 3,076'
TVD: 3,057.24'
Inclination: 13.1 °
Azimuth: 35.4 °
VS: 171.29'

218u
C1: 100.0%
C2: 0.0%
C3: 0.0%
C4: 0.0%

SS: ltgy, wh-clr, sb blkly-sb ang, frm-hd,
fri, arg mtx, sl calc,
SHY SS: ltgy-gy, sb ang-sb rd, occ w rd,
mod-v frm, v f gr, mod srt, p por, arg cmt
SLTY SH: gy-dk gy, sb rd-sb plty, v sft-sft,
sly tex, arg cmt; tr pyr

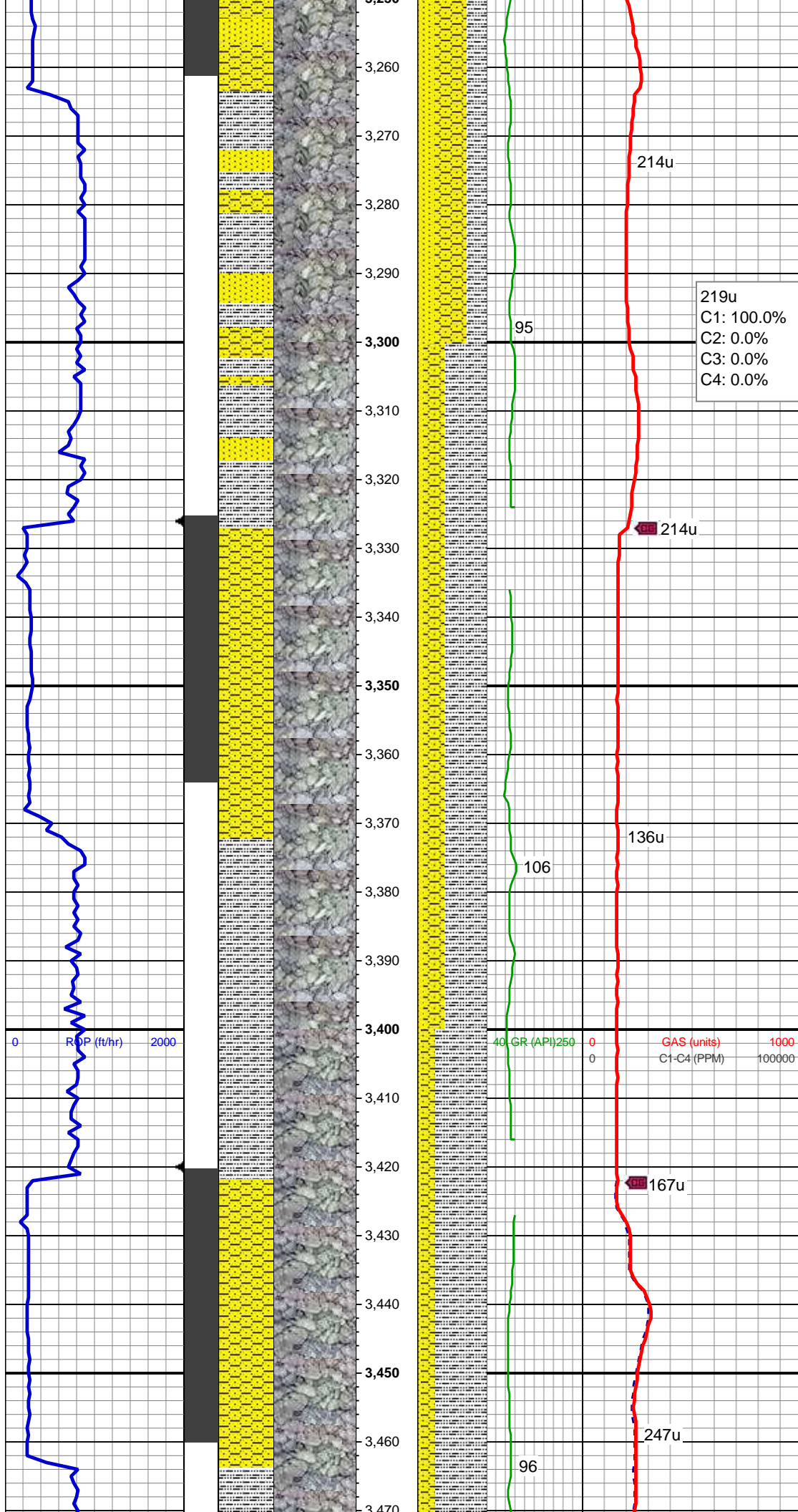
MD: 3,171'
TVD: 3,150.12'
Inclination: 11.1 °
Azimuth: 33.7 °
VS: 188.62'

WT IN 8.60/ OUT 8.60
VIS IN 27/ OUT 27

0 POP (ft/hr) 2000

40 GR (API) 250 0 GAS (units) 1000
C1-C4 (PPM) 100000

SHY SS: ltgy-gy, sb ang-sb rd, occ w rd,
mod-v frm, v f gr, mod srt, p por, arg cmt
SLTY SH: gy-dk gy, sb rd-sb plty, v sft-sft



SLTY SH: gy-dk gy, sb rd-sb plty, v sft-sft, slty tex, arg cmt; tr pyr
SS: ltgy, wh-clr, sb blk-y-sb ang, frm-hd, fri, arg mtx, sl calc

MD: 3,265'
TVD: 3,242.5'
Inclination: 10.2 °
Azimuth: 34.4 °
VS: 203.84'

219u
C1: 100.0%
C2: 0.0%
C3: 0.0%
C4: 0.0%

SLTY SH: gy-dk gy, sb rd-sb plty, v sft-sft, slty tex, arg cmt
SHY SS: ltgy-gy, sb ang-sb rd, occ w rd, mod-v frm, v f gr, mod srt, p por, arg cmt
SS: ltgy, wh-clr, sb blk-y-sb ang, frm-hd, fri, arg mtx, sl calc; tr pyr

MD: 3,360'
TVD: 3,336.16'
Inclination: 9.1 °
Azimuth: 36.5 °
VS: 217.6'

0 ROP (ft/hr) 2000 40 GR (API) 250 0 GAS (units) 1000
0 C1-C4 (PPM) 100000

WT IN 8.95/ OUT 8.95
VIS IN 31/ OUT 31

SLTY SH: gy-dk gy, sb rd-sb plty, v sft-sft, slty tex, arg cmt
SHY SS: ltgy-gy, sb ang-sb rd, occ w rd, mod-v frm, v f gr, mod srt, p por, arg cmt
SS: ltgy, wh-clr, sb blk-y-sb ang, frm-hd, fri, arg mtx, sl calc; tr pyr

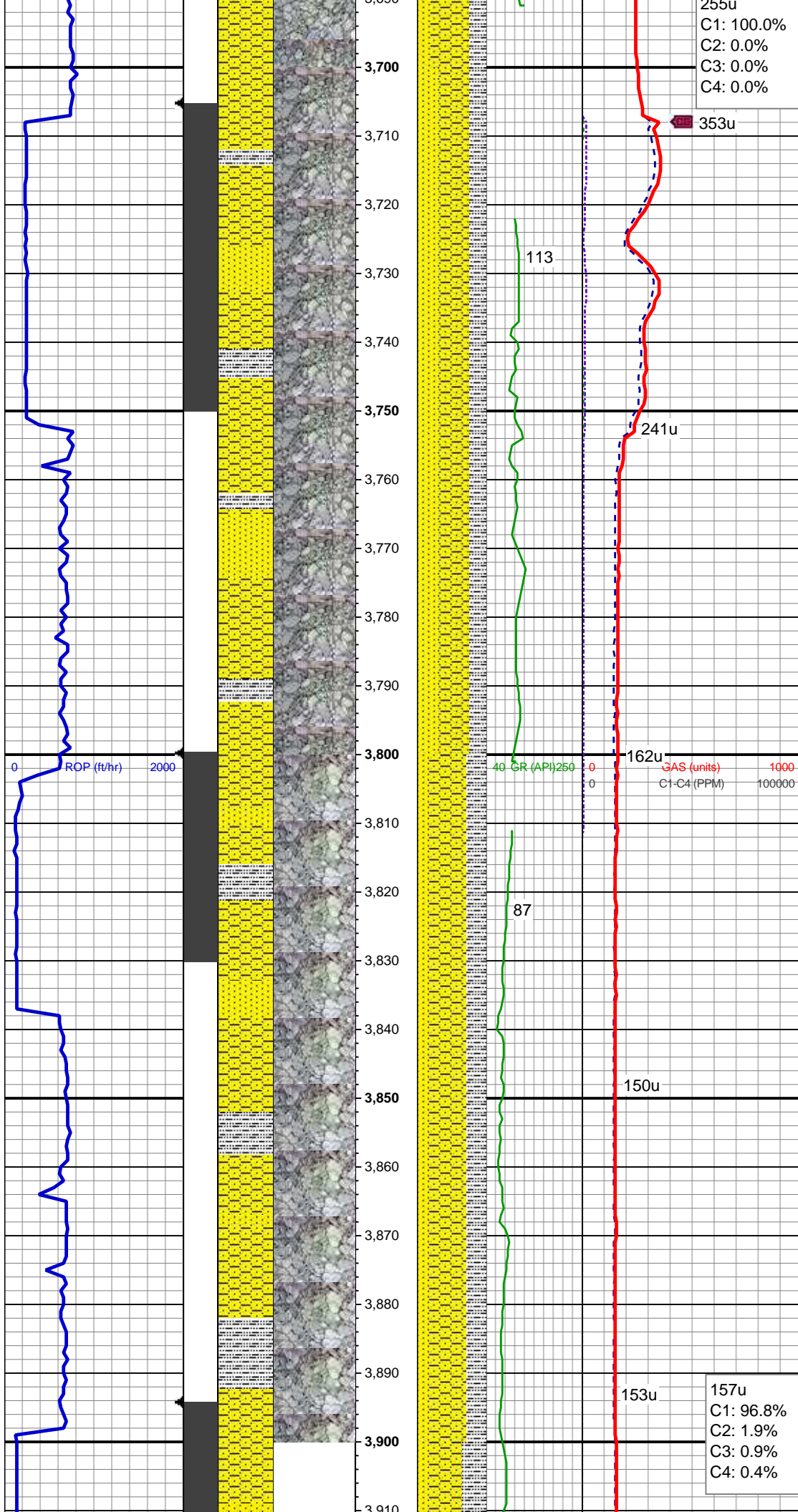
MD: 3,455'
TVD: 3,429.97'
Inclination: 9 °
Azimuth: 38.4 °
VS: 222.22'

MD: 3,550'
TVD: 3,523.81'
Inclination: 9 °
Azimuth: 36.1 °
VS: 242.82'

SLTY SH: gy-dk gy, sb rd-sb plty, v sft-sft,
sly tex, arg cmt
SHY SS: ltgy-gy, sb ang-sb rd, occ w rd,
mod-v frm, v f gr, mod srt, p por, arg cmt
SS: ltgy, wh-clr, sb blkly-sb ang, frm-hd,
fri, arg mtx, sl calc; tr pyr

MD: 3,645'
TVD: 3,617.53'
Inclination: 9.8 °
Azimuth: 37.5 °
VS: 256.02'

SHY SS: ltgy-gy, sb ang-sb rd, occ w rd,
mod-v frm, v f gr, mod srt, p por, arg cmt
SLTY SH: gy-dk gy, sb rd-sb plty, v sft-sft,
sfty tex, arg cmt
SS: ltgy, wh-clr, sb bkly-sb ang, frm-hd,
fri, arg mtx, sl calc; tr pyr



WT IN 8.90/ OUT 8.90
VIS IN 31/ OUT 31

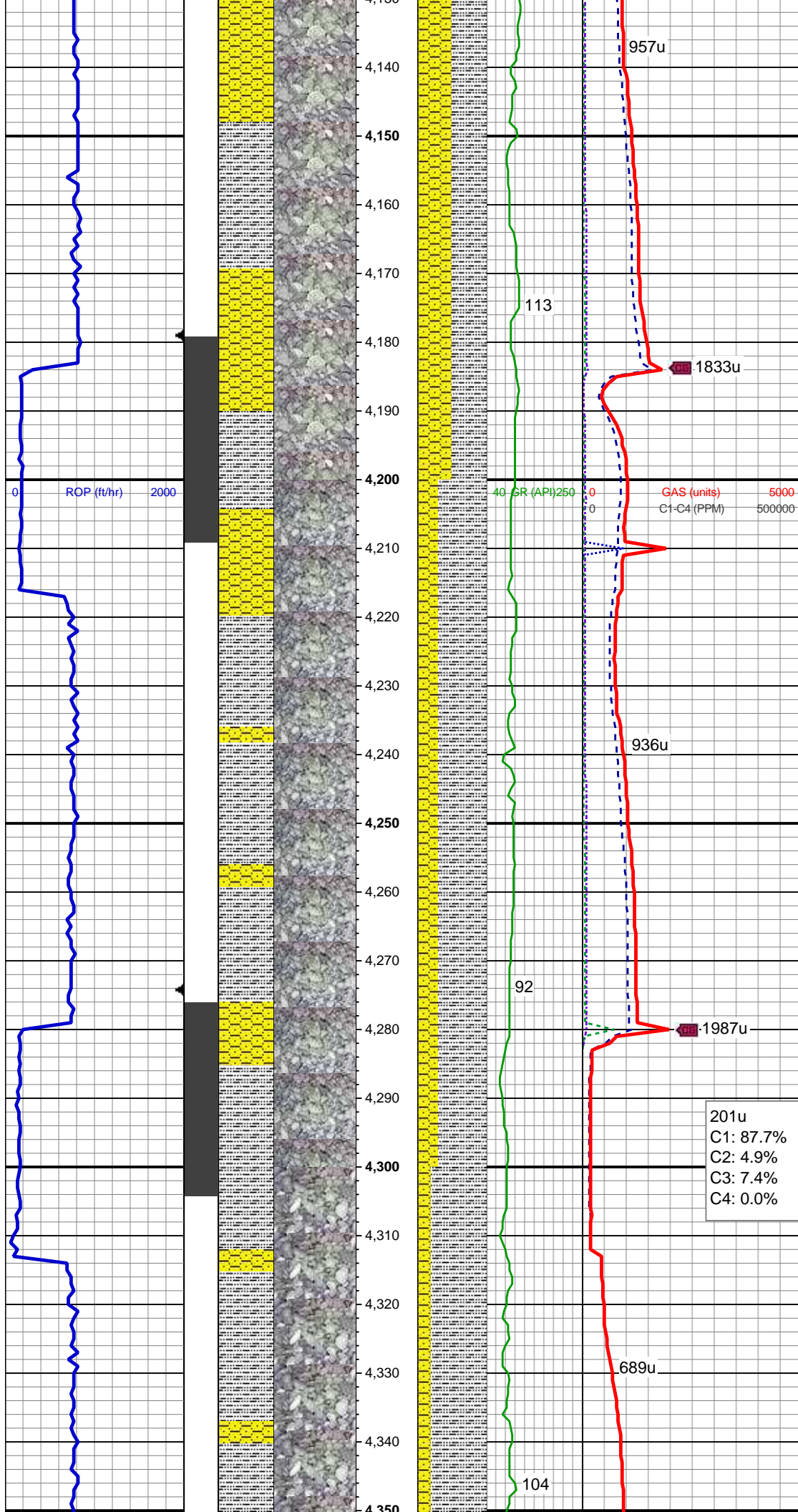
MD: 3,740'
TVD: 3,711.03'
Inclination: 10.6 °
Azimuth: 32.4 °
VS: 270.63'

SHY SS: ltgy-gy, sb ang-sb rd, occ w rd,
mod-v frm, v f gr, mod srt, p por, arg cmt
SS: ltgy, wh-clr, sb blkgy-sb ang, frm-hd,
fri, arg mtx, sl calc; tr pyr
SLTY SH: gy-dk gy, sb rd-sb plty, v sft-sft,
silty tex, arg cmt

MD: 3,834'
TVD: 3,803.42'
Inclination: 10.6 °
Azimuth: 33.3 °
VS: 285.94'

SHY SS: ltgy-gy, sb ang-sb rd, occ w rd,
mod-v frm, v f gr, mod srt, p por, arg cmt
SLTY SH: gy-dk gy, sb rd-sb plty, v sft-sft,
silty tex, arg cmt
SS: ltgy, wh-clr, sb blkgy-sb ang, frm-hd,
fri, arg mtx, sl calc; tr pyr

157u
C1: 96.8%
C2: 1.9%
C3: 0.9%
C4: 0.4%



SHY SS: ltgy-gy, sb ang-sb rd, occ w rd,
mod-v frm, v f gr, mod srt, p por, arg cmt
SLTY SH: gy-dk gy, sb rd-sb plty, v sft-sft,
silty tex, arg cmt

WT IN 9.40/ OUT 9.40
VIS IN 32/ OUT 32

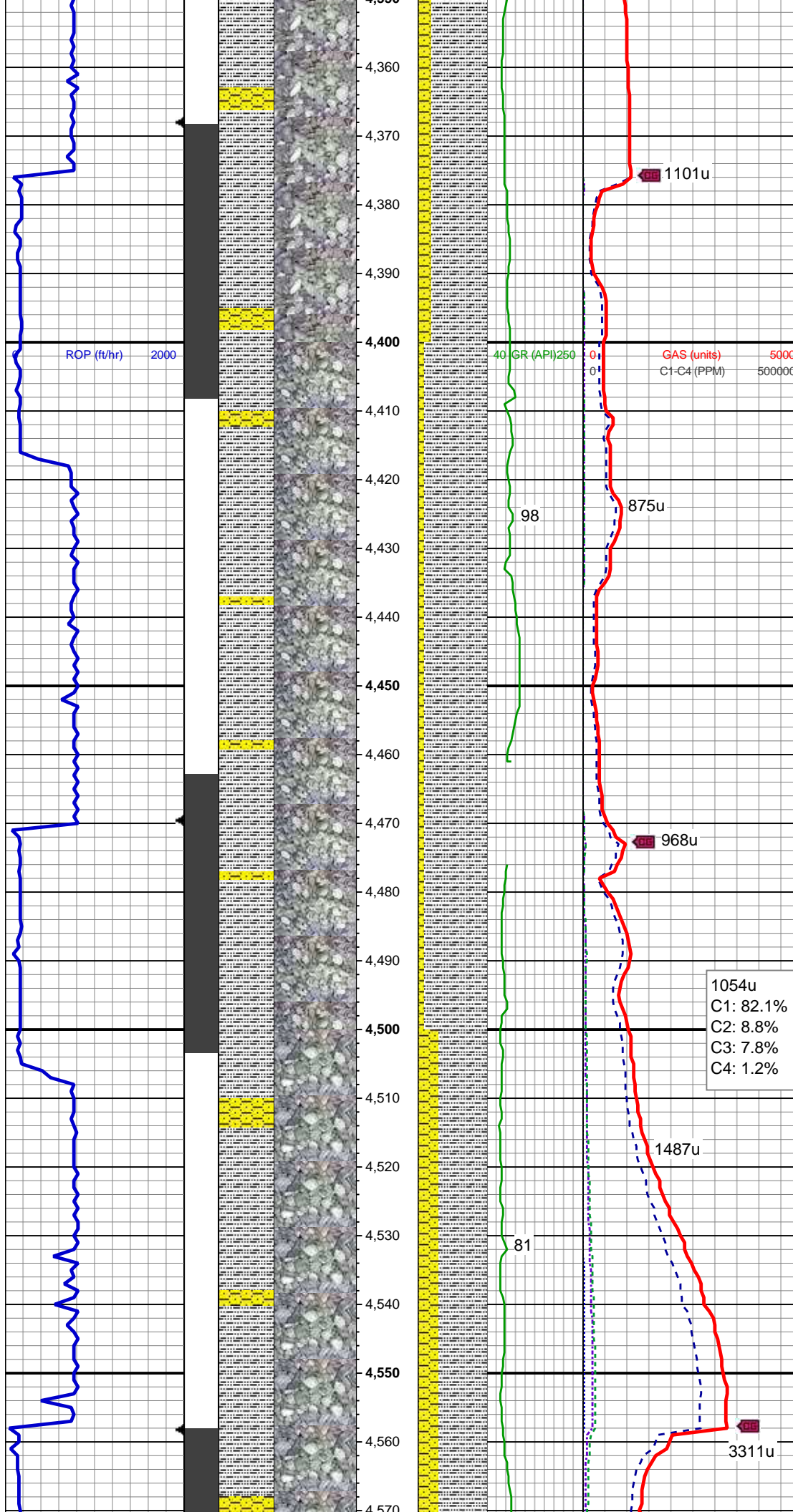
MD: 4,214'
TVD: 4,173.27'
Inclination: 14.1 °
Azimuth: 36.8°
VS: 361.84'

SLTY SH: gy-dk gy, sb rd-sb plty, v sft-sft,
silty tex, arg cmt
SHY SS: ltgy-gy, sb ang-sb rd, occ w rd,
mod-v frm, v f gr, mod srt, p por, arg cmt

201u
C1: 87.7%
C2: 4.9%
C3: 7.4%
C4: 0.0%

MD: 4,308'
TVD: 4,264.57'
Inclination: 13.4 °
Azimuth: 41.1 °
VS: 380.41'

SLTY SH: gy-dk gy, sb rd-sb plty, v sft-sft,
silty tex, arg cmt



SHY SS: ltgy-gy, sb ang-sb rd, occ w rd,
mod-v frm, v f gr, mod srt, p por, arg cmt

MD: 4,403'
TVD: 4,357.06'
Inclination: 13 °
Azimuth: 39.5 °
VS: 398.14'

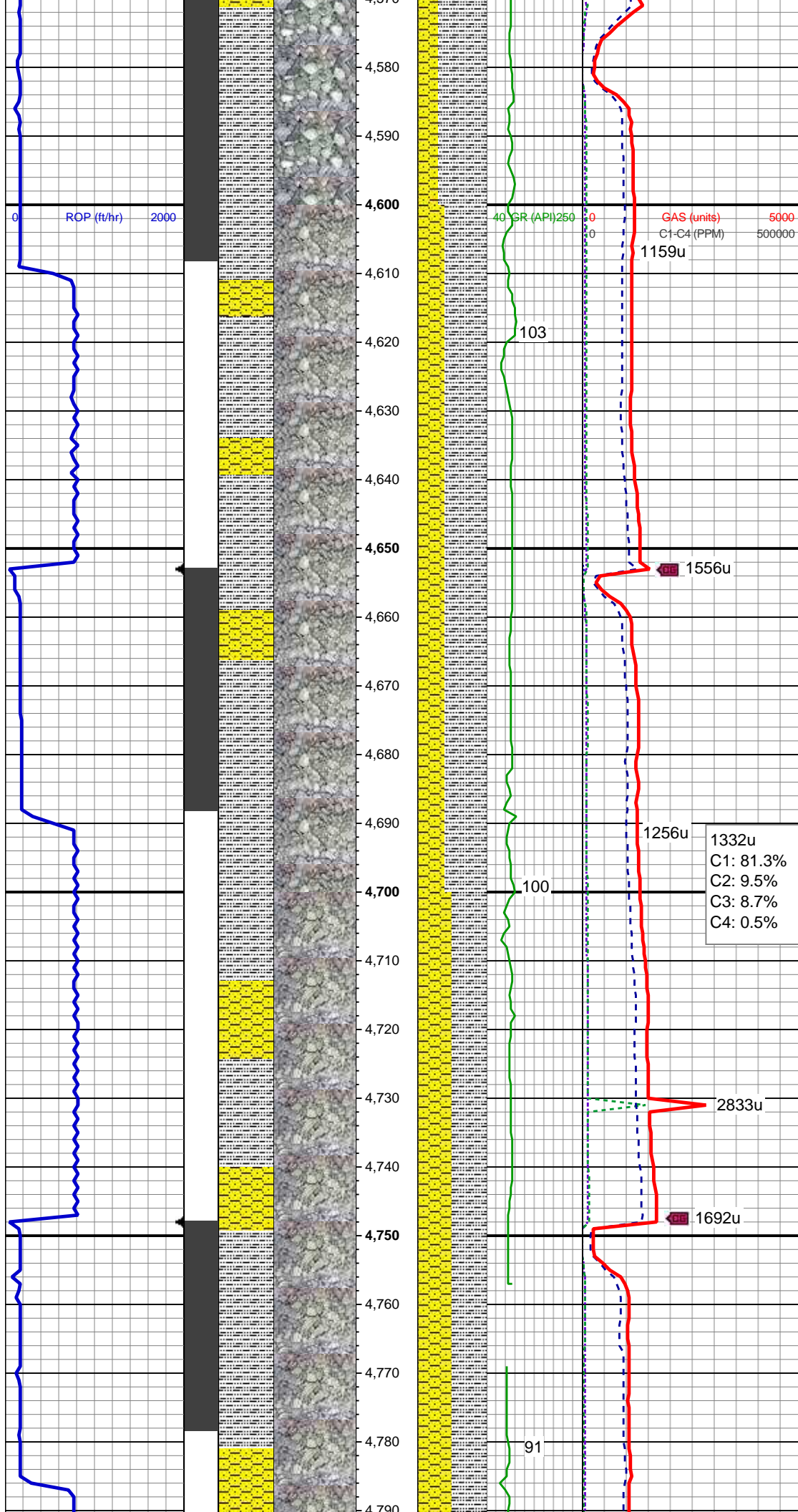
SLTY SH: gy-dk gy, sb rd-sb plty, v sft-sft,
silty tex, arg cmt
SHY SS: ltgy-gy, sb ang-sb rd, occ w rd,
mod-v frm, v f gr, mod srt, p por, arg cmt

WT IN 9.40/ OUT 9.50
VIS IN 35/ OUT 34

MD: 4,498'
TVD: 4,449.67'
Inclination: 12.8 °
Azimuth: 38.1 °
VS: 415.8'

SLTY SH: gy-dk gy, sb rd-sb plty, v sft-sft,
silty tex, arg cmt
SHY SS: ltgy-gy, sb ang-sb rd, occ w rd,
mod-v frm, v f gr, mod srt, p por, arg cmt

WT IN 9.50/ OUT 9.60
VIS IN 36/ OUT 36



MD: 4,593'
TVD: 4,542.14'
Inclination: 13.7 °
Azimuth: 34.2 °
VS: 434.47'

SLTY SH: gy-dk gy, sb rd-sb plty, v sft-sft,
sly tex, arg cmt
SHY SS: ltgy-gy, sb ang-sb rd, occ w rd,
mod-v frm, v f gr, mod srt, p por, arg cmt

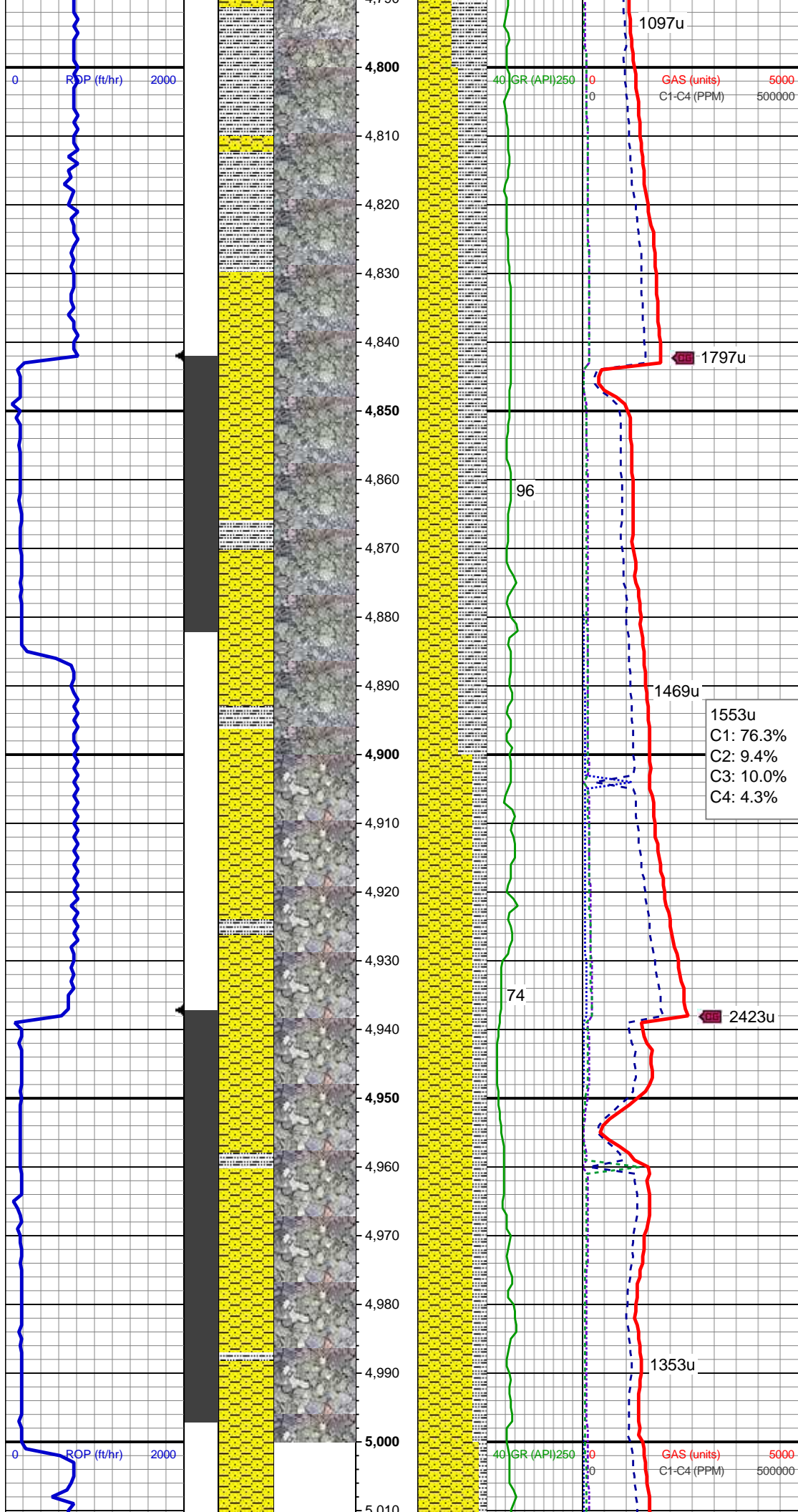
MD: 4,688'
TVD: 4,634.36'
Inclination: 14.1 °
Azimuth: 33.3 °
VS: 454.51'

1332u
C1: 81.3%
C2: 9.5%
C3: 8.7%
C4: 0.5%

SHY SS: ltgy-gy, sb ang-sb rd, occ w rd,
mod-v frm, v f gr, mod srt, p por, arg cmt
SLTY SH: gy-dk gy, sb rd-sb plty, v sft-sft,
sly tex, arg cmt

WT IN 9.50/ OUT 9.60
VIS IN 35/ OUT 35

MD: 4,782'
TVD: 4,725.89'
Inclination: 12.2 °
Azimuth: 32.4 °



Azimuth: 32.1°
VS: 473.44'

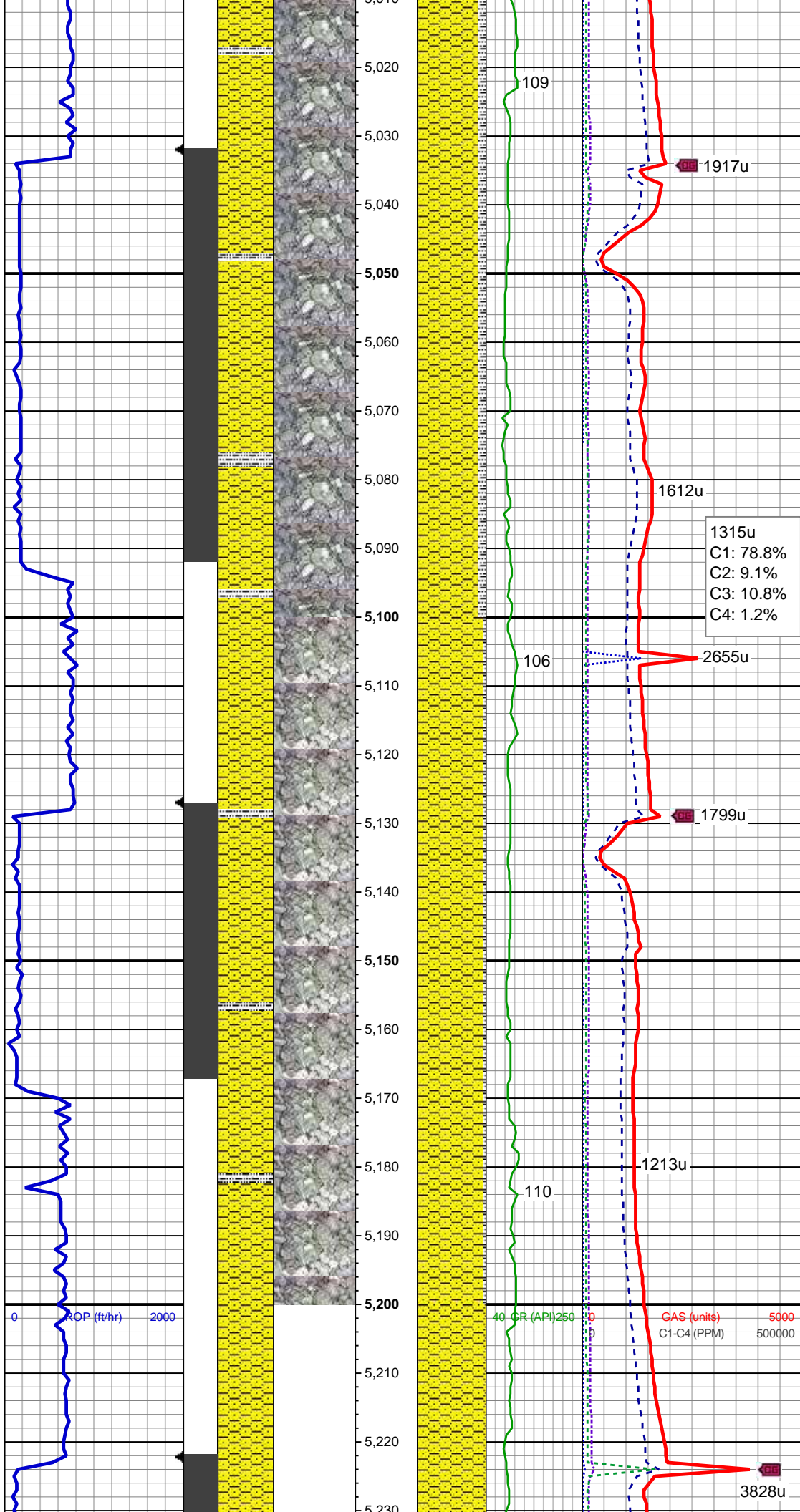
SHY SS: ltgy-gy, sb ang-sb rd, occ w rd,
mod-v frm, v f gr, mod srt, p por, arg cmt
SLTY SH: gy-dk gy, sb rd-sb plty, v sft-sft,
silty tex, arg cmt

MD: 4,877'
TVD: 4,818.85'
Inclination: 11.6 °
Azimuth: 36.3°
VS: 490.54'

SHY SS: ltgy-gy, sb ang-sb rd, occ w rd,
mod-v frm, v f gr, mod srt, p por, arg cmt
SLTY SH: gy-dk gy, sb rd-sb plty, v sft-sft,
silty tex, arg cmt

MD: 4,972'
TVD: 4,911.91'
Inclination: 11.6 °
Azimuth: 33.7°
VS: 507.11'

WT IN 9.50/ OUT 9.60
VIS IN 36/ OUT 35

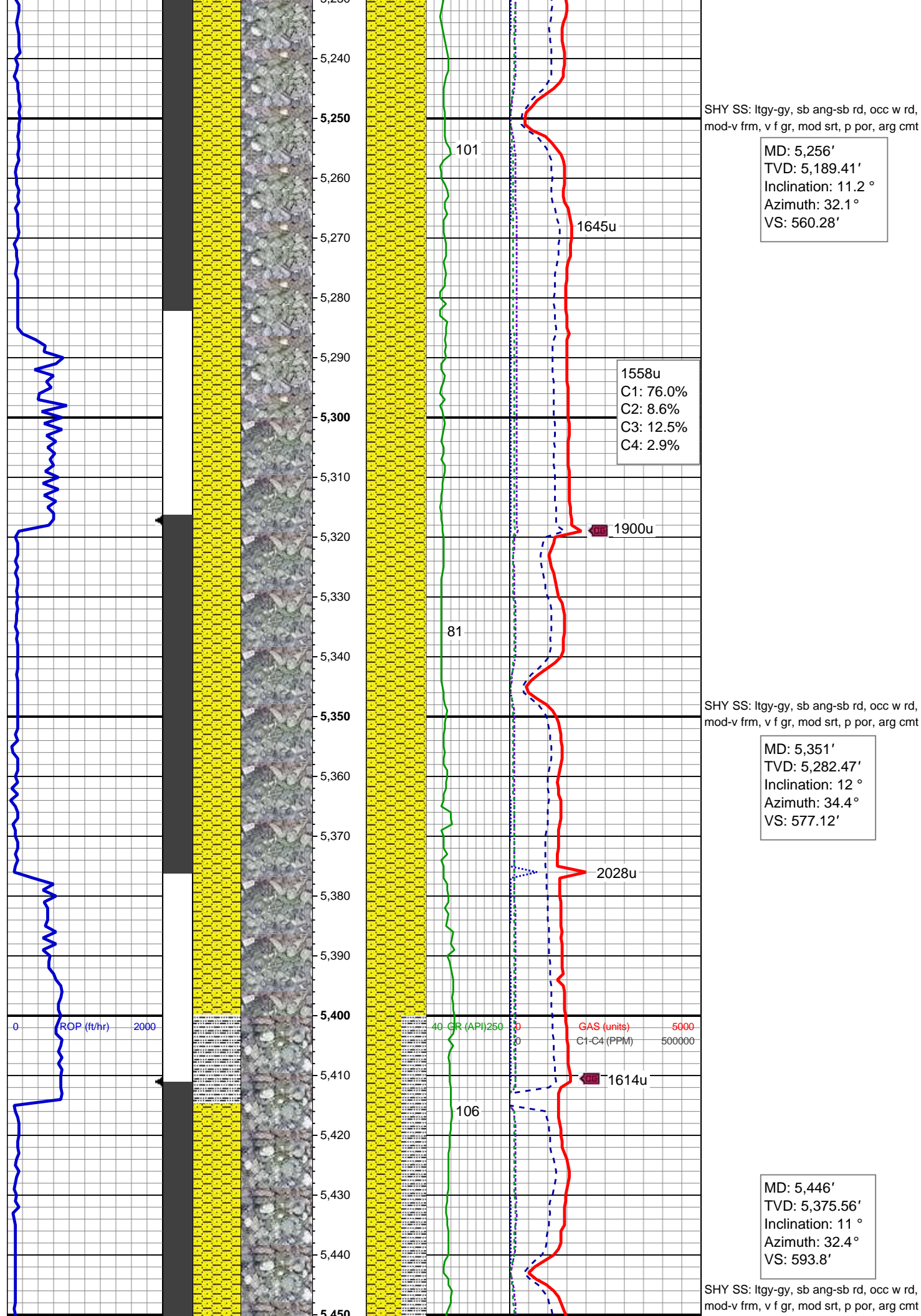


SHY SS: ltgy-gy, sb ang-sb rd, occ w rd, mod-v frm, v f gr, mod srt, p por, arg cmt, rr glau
SLTY SH: gy-dk gy, sb rd-sb plty, v sft-sft, slty tex, arg cmt

MD: 5,067'
TVD: 5,004.71'
Inclination: 13.1 °
Azimuth: 34.7 °
VS: 524.87'

SHY SS: ltgy-gy, sb ang-sb rd, occ w rd, mod-v frm, v f gr, mod srt, p por, arg cmt, rr glau
SLTY SH: gy-dk gy, sb rd-sb plty, v sft-sft, slty tex, arg cmt

MD: 5,162'
TVD: 5,097.38'
Inclination: 12.3 °
Azimuth: 32.4 °
VS: 543.24'



SHY SS: ltgy-gy, sb ang-sb rd, occ w rd, mod-v frm, v f gr, mod srt, p por, arg cmt

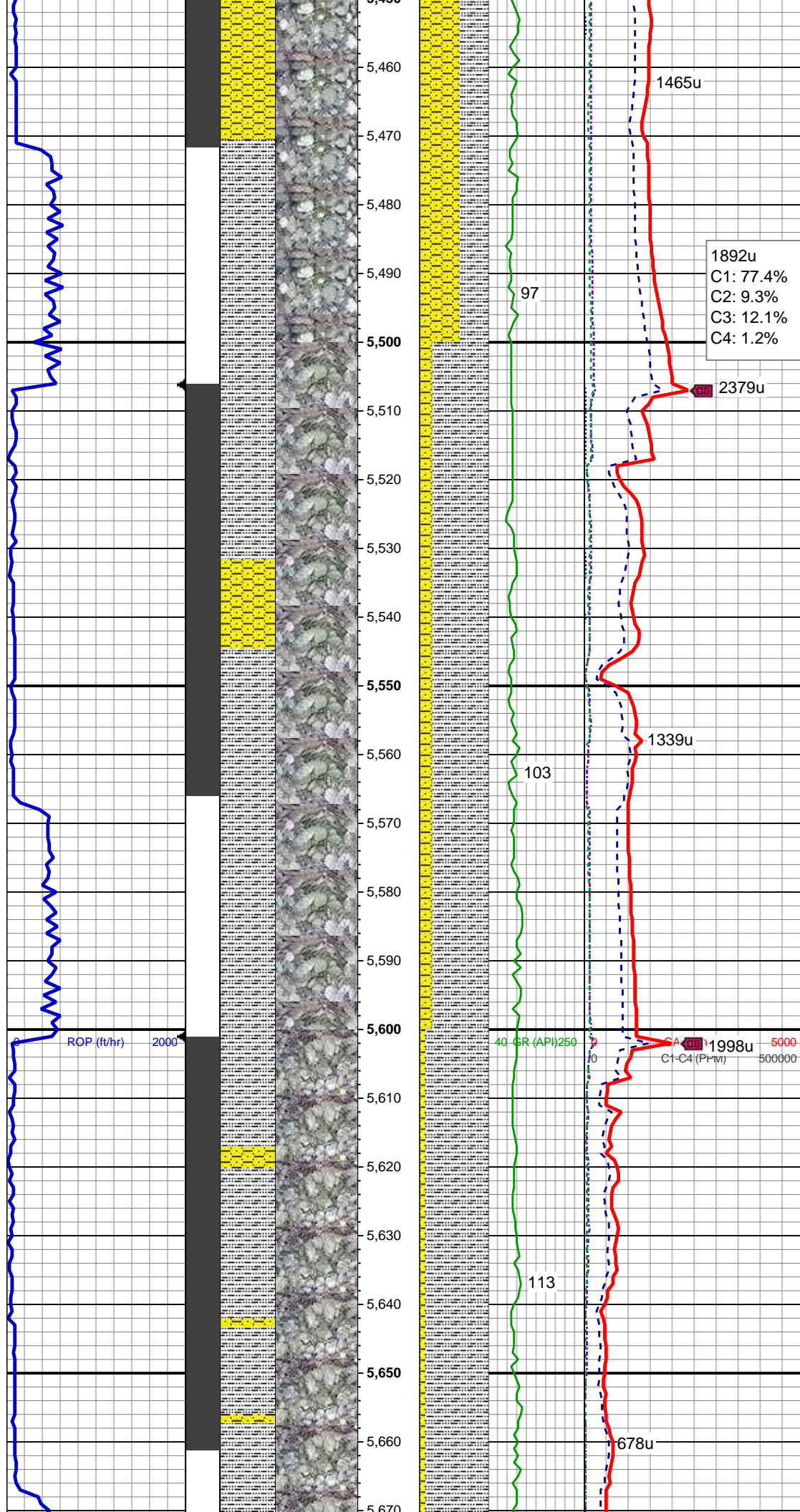
MD: 5,256'
TVD: 5,189.41'
Inclination: 11.2 °
Azimuth: 32.1 °
VS: 560.28'

SHY SS: ltgy-gy, sb ang-sb rd, occ w rd, mod-v frm, v f gr, mod srt, p por, arg cmt

MD: 5,351'
TVD: 5,282.47'
Inclination: 12 °
Azimuth: 34.4 °
VS: 577.12'

SHY SS: ltgy-gy, sb ang-sb rd, occ w rd, mod-v frm, v f gr, mod srt, p por, arg cmt

MD: 5,446'
TVD: 5,375.56'
Inclination: 11 °
Azimuth: 32.4 °
VS: 593.8'



SLTY SH: gy-dk gy, sb rd-sb plty, v sft-sft,
silty tex, arg cmt

WT IN 9.50/ OUT 9.50+
VIS IN 35/ OUT 34

SLTY SH: gy-dk gy, sb rd-sb plty, v sft-sft,
silty tex, arg cmt
SHY SS: ltgy-gy, sb ang-sb rd, occ w rd,
mod-v frm, v f gr, mod srt, p por, arg cmt

SLTY SH: gy-dk gy, sb rd-sb plty, v sft-sft,
silty tex, arg cmt
SHY SS: ltgy-gy, sb ang-sb rd, occ w rd,
mod-v frm, v f gr, mod srt, p por, arg cmt

WT IN 9.40+/- OUT 9.50
VIS IN 35/ OUT 35

425u
C1: 76.9%
C2: 11.9%
C3: 11.2%
C4: 0.0%

529u

110

MD: 5,731'
TVD: 5,655.59'
Inclination: 10.7 °
Azimuth: 33.7 °
VS: 640.57'

SLTY SH: gy-dk gy, sb rd-sb plty, v sft-sft,
sly tex, arg cmt
SHY SS: ltgy-gy, sb ang-sb rd, occ w rd,
mod-v frm, v f gr, mod srt, p por, arg cmt

1574u

2258u

40 GR (API) 250

GAS (units)
C1-C4 (PPM)

5000

500000

WT IN 9.25/ OUT 9.25
VIS IN 35/ OUT 35

MD: 5,826'
TVD: 5,748.94'
Inclination: 10.7 °
Azimuth: 28.6 °
VS: 656.42'

SLTY SH: gy-dk gy, sb rd-sb plty, v sft-sft,
sly tex, arg cmt
SHY SS: ltgy-gy, sb ang-sb rd, occ w rd,
mod-v frm, v f gr, mod srt, p por, arg cmt

TD @ 5886' MD
02/22/2014 @ 6:11 PM

LOG CONTINUES ON MPlot
"PEAKS K26-77-1HN HORZ"

1956u

99

