

Synergy Resources

Well Name: **SRC Gies D-15-22NHZ**

Surface Location: SRC Gies Pad Sec.15-T7N-R65W

North American Datum 1983 , US State Plane 1983 , Colorado Northern Zone

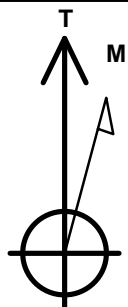
Ground Elevation: 4838.0

+N/-S	+E/-W	Northing	Easting	Latitude	Longitude	Slot
0.0	0.0	1450672.27	3237958.53	40.567340	-104.643475	

RKB - 13' WELL @ 4851.0ft (RKB - 13')

WELLBORE TARGET DETAILS

Name	TVD	+N/-S	+E/-W	Shape
SHL 272'FSL & 1047'FEL, Sec.15	1.0	0.0	0.0	Point
BHL 470'FSL & 984'FEL, Sec.22	7240.0	-4517.6	53.6	Point
Landing Pt.460'FNL & 1001'FEL, Sec.22	7240.0	-733.4	39.5	Point



Azimuths to True North
Magnetic North: 8.42°

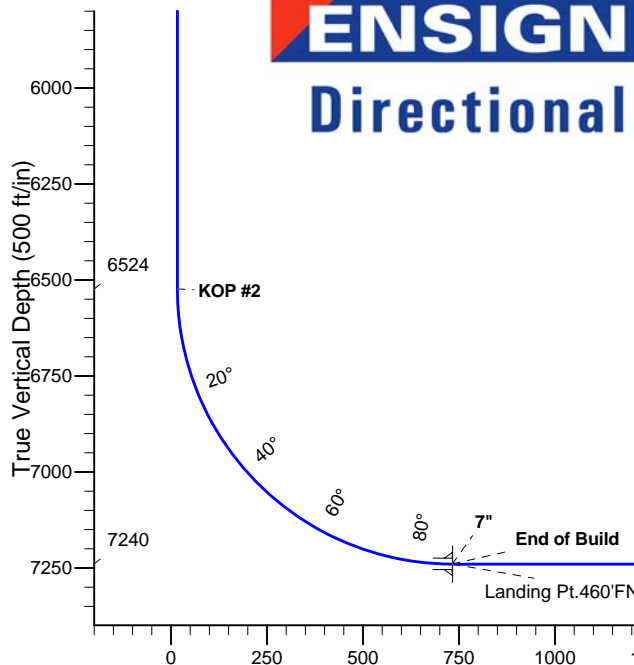
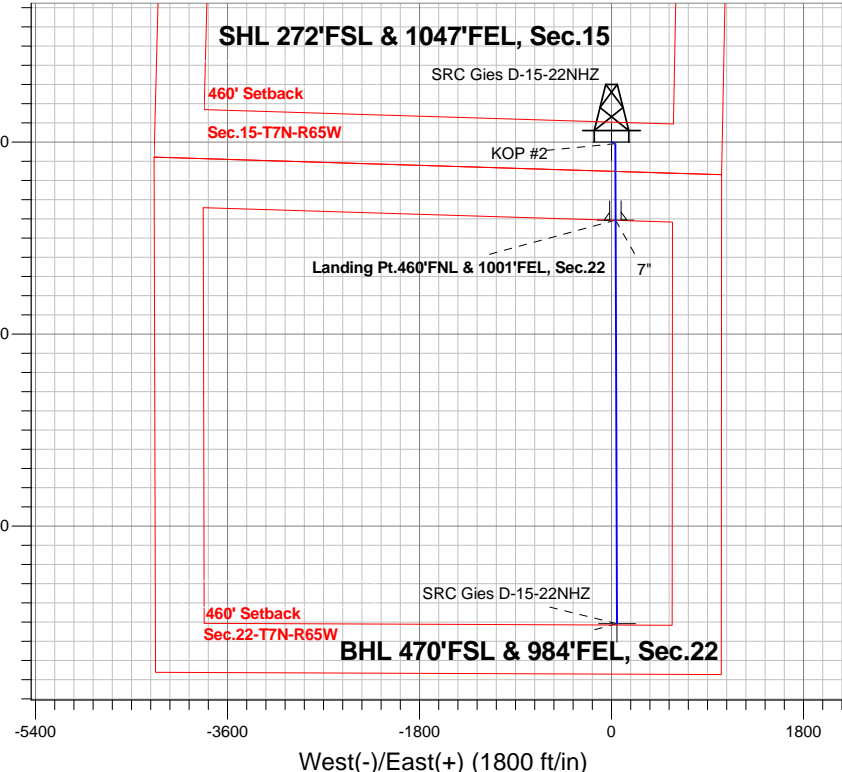
Magnetic Field
Strength: 52926.0snT
Dip Angle: 67.10°
Date: 5/8/2014
Model: IGRF2010

SRC Gies Pad Sec.15-T7N-R65W
SRC Gies D-15-22NHZ
Plan #1 (5-7-14)
8:44, May 15 2014

ANNOTATIONS

TVD	MD	Annotation
2500.0	2500.0	KOP #1
6523.8	6524.8	KOP #2
7240.0	7649.8	End of Build

South(-)/North(+) (1800 ft/in)



SECTION DETAILS

Sec	MD	Inc	Azi	TVD	+N/-S	+E/-W	DLeg	TFace	VSec	Target
1	0.0	0.00	0.00	0.0	0.0	0.0	0.00	0.00	0.0	
2	2500.0	0.00	0.00	2500.0	0.0	0.0	0.00	0.00	0.0	
3	2860.6	3.61	114.02	2860.4	-4.6	10.4	1.00	114.02	4.7	
4	3140.4	3.61	114.02	3139.6	-11.8	26.4	0.00	0.00	12.1	
5	3501.0	0.00	0.00	3500.0	-16.4	36.8	1.00	180.00	16.8	
6	6524.8	0.00	0.00	6523.8	-16.4	36.8	0.00	0.00	16.8	
7	7649.8	90.00	179.79	7240.0	-732.6	39.5	8.00	179.79	733.0	
8	7650.6	90.00	179.79	7240.0	-733.4	39.5	0.00	0.00	733.8	Landing Pt.460'FNL & 1001'FEL, Sec.22
9	11434.8	90.00	179.79	7240.0	-4517.6	53.5	0.00	0.00	4517.9	BHL 470'FSL & 984'FEL, Sec.22

BHL 470'FSL & 984'FEL, Sec.22

Vertical Section at 179.32° (500 ft/in)



Synergy Resources

SEC.15-T7N-R65W

SRC Gies Pad Sec.15-T7N-R65W

SRC Gies D-15-22NHZ

Wellbore #1

Plan: Plan #1 (5-7-14)

Standard Planning Report

15 May, 2014

Database:	landmark	Local Co-ordinate Reference:	Well SRC Gies D-15-22NHZ
Company:	Synergy Resources	TVD Reference:	WELL @ 4851.0ft (RKB - 13')
Project:	SEC.15-T7N-R65W	MD Reference:	WELL @ 4851.0ft (RKB - 13')
Site:	SRC Gies Pad Sec.15-T7N-R65W	North Reference:	True
Well:	SRC Gies D-15-22NHZ	Survey Calculation Method:	Minimum Curvature
Wellbore:	Wellbore #1		
Design:	Plan #1 (5-7-14)		

Project	SEC.15-T7N-R65W, Weld County, CO		
Map System:	US State Plane 1983	System Datum:	Mean Sea Level
Geo Datum:	North American Datum 1983		Using Well Reference Point
Map Zone:	Colorado Northern Zone		Using geodetic scale factor

Site						SRC Gies Pad Sec.15-T7N-R65W											
Site Position:						Northing:			1,450,674.24 ft			Latitude:			40.567348		
From:			Lat/Long			Easting:			3,237,858.77 ft			Longitude:			-104.643834		
Position Uncertainty:			0.0 ft			Slot Radius:			"			Grid Convergence:			0.55 °		

Well	SRC Gies D-15-22NHZ					
Well Position	+N-S	-2.9 ft	Northing:	1,450,672.27 ft	Latitude:	40.567340
	+E-W	99.7 ft	Easting:	3,237,958.53 ft	Longitude:	-104.643475
Position Uncertainty		0.0 ft	Wellhead Elevation:	ft	Ground Level:	4,838.0 ft

Wellbore	Wellbore #1				
Magnetics	Model Name	Sample Date	Declination (°)	Dip Angle (°)	Field Strength (nT)
	IGRF2010	5/8/2014	8.42	67.10	52,926

Design	Plan #1 (5-7-14)			
Audit Notes:				
Version:	Phase:	PROTOTYPE	Tie On Depth:	0.0
Vertical Section:	Depth From (TVD) (ft)	+N/-S (ft)	+E/-W (ft)	Direction (°)
	0.0	0.0	0.0	179.32

Plan Sections										
Measured Depth (ft)	Inclination (°)	Azimuth (°)	Vertical Depth (ft)	+N/-S (ft)	+E/-W (ft)	Dogleg Rate (°/100ft)	Build Rate (°/100ft)	Turn Rate (°/100ft)	TFO (°)	Target
0.0	0.00	0.00	0.0	0.0	0.0	0.00	0.00	0.00	0.00	
2,500.0	0.00	0.00	2,500.0	0.0	0.0	0.00	0.00	0.00	0.00	
2,860.6	3.61	114.02	2,860.4	-4.6	10.4	1.00	1.00	0.00	114.02	
3,140.4	3.61	114.02	3,139.6	-11.8	26.4	0.00	0.00	0.00	0.00	
3,501.0	0.00	0.00	3,500.0	-16.4	36.8	1.00	-1.00	0.00	180.00	
6,524.8	0.00	0.00	6,523.8	-16.4	36.8	0.00	0.00	0.00	0.00	
7,649.8	90.00	179.79	7,240.0	-732.6	39.5	8.00	8.00	0.00	179.79	
7,650.6	90.00	179.79	7,240.0	-733.4	39.5	0.00	0.00	0.00	0.00	Landing Pt.460'FNL
11,434.8	90.00	179.79	7,240.0	-4,517.6	53.5	0.00	0.00	0.00	0.00	BHL 470'FSL & 984

Database:	landmark	Local Co-ordinate Reference:	Well SRC Gies D-15-22NHZ
Company:	Synergy Resources	TVD Reference:	WELL @ 4851.0ft (RKB - 13')
Project:	SEC.15-T7N-R65W	MD Reference:	WELL @ 4851.0ft (RKB - 13')
Site:	SRC Gies Pad Sec.15-T7N-R65W	North Reference:	True
Well:	SRC Gies D-15-22NHZ	Survey Calculation Method:	Minimum Curvature
Wellbore:	Wellbore #1		
Design:	Plan #1 (5-7-14)		

Planned Survey									
Measured Depth (ft)	Inclination (°)	Azimuth (°)	Vertical Depth (ft)	+N/-S (ft)	+E/-W (ft)	Vertical Section (ft)	Dogleg Rate (°/100ft)	Build Rate (°/100ft)	Turn Rate (°/100ft)
0.0	0.00	0.00	0.0	0.0	0.0	0.0	0.00	0.00	0.00
1.0	0.00	0.00	1.0	0.0	0.0	0.0	0.00	0.00	0.00
SHL 272'FSL & 1047'FEL, Sec.15									
100.0	0.00	0.00	100.0	0.0	0.0	0.0	0.00	0.00	0.00
200.0	0.00	0.00	200.0	0.0	0.0	0.0	0.00	0.00	0.00
300.0	0.00	0.00	300.0	0.0	0.0	0.0	0.00	0.00	0.00
400.0	0.00	0.00	400.0	0.0	0.0	0.0	0.00	0.00	0.00
500.0	0.00	0.00	500.0	0.0	0.0	0.0	0.00	0.00	0.00
600.0	0.00	0.00	600.0	0.0	0.0	0.0	0.00	0.00	0.00
700.0	0.00	0.00	700.0	0.0	0.0	0.0	0.00	0.00	0.00
800.0	0.00	0.00	800.0	0.0	0.0	0.0	0.00	0.00	0.00
900.0	0.00	0.00	900.0	0.0	0.0	0.0	0.00	0.00	0.00
1,000.0	0.00	0.00	1,000.0	0.0	0.0	0.0	0.00	0.00	0.00
1,100.0	0.00	0.00	1,100.0	0.0	0.0	0.0	0.00	0.00	0.00
1,200.0	0.00	0.00	1,200.0	0.0	0.0	0.0	0.00	0.00	0.00
1,300.0	0.00	0.00	1,300.0	0.0	0.0	0.0	0.00	0.00	0.00
1,400.0	0.00	0.00	1,400.0	0.0	0.0	0.0	0.00	0.00	0.00
1,500.0	0.00	0.00	1,500.0	0.0	0.0	0.0	0.00	0.00	0.00
1,600.0	0.00	0.00	1,600.0	0.0	0.0	0.0	0.00	0.00	0.00
1,700.0	0.00	0.00	1,700.0	0.0	0.0	0.0	0.00	0.00	0.00
1,800.0	0.00	0.00	1,800.0	0.0	0.0	0.0	0.00	0.00	0.00
1,900.0	0.00	0.00	1,900.0	0.0	0.0	0.0	0.00	0.00	0.00
2,000.0	0.00	0.00	2,000.0	0.0	0.0	0.0	0.00	0.00	0.00
2,100.0	0.00	0.00	2,100.0	0.0	0.0	0.0	0.00	0.00	0.00
2,200.0	0.00	0.00	2,200.0	0.0	0.0	0.0	0.00	0.00	0.00
2,300.0	0.00	0.00	2,300.0	0.0	0.0	0.0	0.00	0.00	0.00
2,400.0	0.00	0.00	2,400.0	0.0	0.0	0.0	0.00	0.00	0.00
2,500.0	0.00	0.00	2,500.0	0.0	0.0	0.0	0.00	0.00	0.00
KOP #1									
2,600.0	1.00	114.02	2,600.0	-0.4	0.8	0.4	1.00	1.00	0.00
2,700.0	2.00	114.02	2,700.0	-1.4	3.2	1.5	1.00	1.00	0.00
2,800.0	3.00	114.02	2,799.9	-3.2	7.2	3.3	1.00	1.00	0.00
2,860.6	3.61	114.02	2,860.4	-4.6	10.4	4.7	1.00	1.00	0.00
2,900.0	3.61	114.02	2,899.7	-5.6	12.6	5.8	0.00	0.00	0.00
3,000.0	3.61	114.02	2,999.5	-8.2	18.4	8.4	0.00	0.00	0.00
3,100.0	3.61	114.02	3,099.3	-10.7	24.1	11.0	0.00	0.00	0.00
3,140.4	3.61	114.02	3,139.6	-11.8	26.4	12.1	0.00	0.00	0.00
3,200.0	3.01	114.02	3,199.1	-13.2	29.6	13.5	1.00	-1.00	0.00
3,300.0	2.01	114.02	3,299.0	-15.0	33.6	15.4	1.00	-1.00	0.00
3,400.0	1.01	114.02	3,399.0	-16.0	36.0	16.5	1.00	-1.00	0.00
3,500.0	0.01	114.02	3,499.0	-16.4	36.8	16.8	1.00	-1.00	0.00
3,501.0	0.00	0.00	3,500.0	-16.4	36.8	16.8	1.00	-1.00	0.00
3,600.0	0.00	0.00	3,599.0	-16.4	36.8	16.8	0.00	0.00	0.00
3,700.0	0.00	0.00	3,699.0	-16.4	36.8	16.8	0.00	0.00	0.00
3,800.0	0.00	0.00	3,799.0	-16.4	36.8	16.8	0.00	0.00	0.00
3,900.0	0.00	0.00	3,899.0	-16.4	36.8	16.8	0.00	0.00	0.00
4,000.0	0.00	0.00	3,999.0	-16.4	36.8	16.8	0.00	0.00	0.00
4,100.0	0.00	0.00	4,099.0	-16.4	36.8	16.8	0.00	0.00	0.00
4,200.0	0.00	0.00	4,199.0	-16.4	36.8	16.8	0.00	0.00	0.00
4,300.0	0.00	0.00	4,299.0	-16.4	36.8	16.8	0.00	0.00	0.00
4,400.0	0.00	0.00	4,399.0	-16.4	36.8	16.8	0.00	0.00	0.00
4,500.0	0.00	0.00	4,499.0	-16.4	36.8	16.8	0.00	0.00	0.00
4,600.0	0.00	0.00	4,599.0	-16.4	36.8	16.8	0.00	0.00	0.00
4,700.0	0.00	0.00	4,699.0	-16.4	36.8	16.8	0.00	0.00	0.00

Database:	landmark	Local Co-ordinate Reference:	Well SRC Gies D-15-22NHZ
Company:	Synergy Resources	TVD Reference:	WELL @ 4851.0ft (RKB - 13')
Project:	SEC.15-T7N-R65W	MD Reference:	WELL @ 4851.0ft (RKB - 13')
Site:	SRC Gies Pad Sec.15-T7N-R65W	North Reference:	True
Well:	SRC Gies D-15-22NHZ	Survey Calculation Method:	Minimum Curvature
Wellbore:	Wellbore #1		
Design:	Plan #1 (5-7-14)		

Planned Survey									
Measured Depth (ft)	Inclination (°)	Azimuth (°)	Vertical Depth (ft)	+N/-S (ft)	+E/-W (ft)	Vertical Section (ft)	Dogleg Rate (°/100ft)	Build Rate (°/100ft)	Turn Rate (°/100ft)
4,800.0	0.00	0.00	4,799.0	-16.4	36.8	16.8	0.00	0.00	0.00
4,900.0	0.00	0.00	4,899.0	-16.4	36.8	16.8	0.00	0.00	0.00
5,000.0	0.00	0.00	4,999.0	-16.4	36.8	16.8	0.00	0.00	0.00
5,100.0	0.00	0.00	5,099.0	-16.4	36.8	16.8	0.00	0.00	0.00
5,200.0	0.00	0.00	5,199.0	-16.4	36.8	16.8	0.00	0.00	0.00
5,300.0	0.00	0.00	5,299.0	-16.4	36.8	16.8	0.00	0.00	0.00
5,400.0	0.00	0.00	5,399.0	-16.4	36.8	16.8	0.00	0.00	0.00
5,500.0	0.00	0.00	5,499.0	-16.4	36.8	16.8	0.00	0.00	0.00
5,600.0	0.00	0.00	5,599.0	-16.4	36.8	16.8	0.00	0.00	0.00
5,700.0	0.00	0.00	5,699.0	-16.4	36.8	16.8	0.00	0.00	0.00
5,800.0	0.00	0.00	5,799.0	-16.4	36.8	16.8	0.00	0.00	0.00
5,900.0	0.00	0.00	5,899.0	-16.4	36.8	16.8	0.00	0.00	0.00
6,000.0	0.00	0.00	5,999.0	-16.4	36.8	16.8	0.00	0.00	0.00
6,100.0	0.00	0.00	6,099.0	-16.4	36.8	16.8	0.00	0.00	0.00
6,200.0	0.00	0.00	6,199.0	-16.4	36.8	16.8	0.00	0.00	0.00
6,300.0	0.00	0.00	6,299.0	-16.4	36.8	16.8	0.00	0.00	0.00
6,400.0	0.00	0.00	6,399.0	-16.4	36.8	16.8	0.00	0.00	0.00
6,500.0	0.00	0.00	6,499.0	-16.4	36.8	16.8	0.00	0.00	0.00
6,524.8	0.00	0.00	6,523.8	-16.4	36.8	16.8	0.00	0.00	0.00
KOP #2									
6,600.0	6.01	179.79	6,598.8	-20.3	36.8	20.8	8.00	8.00	0.00
6,700.0	14.01	179.79	6,697.2	-37.7	36.9	38.1	8.00	8.00	0.00
6,800.0	22.01	179.79	6,792.2	-68.6	37.0	69.0	8.00	8.00	0.00
6,900.0	30.01	179.79	6,882.0	-112.4	37.2	112.9	8.00	8.00	0.00
7,000.0	38.01	179.79	6,964.9	-168.3	37.4	168.8	8.00	8.00	0.00
7,100.0	46.01	179.79	7,039.1	-235.2	37.6	235.6	8.00	8.00	0.00
7,200.0	54.01	179.79	7,103.3	-311.8	37.9	312.2	8.00	8.00	0.00
7,300.0	62.01	179.79	7,156.2	-396.5	38.2	396.9	8.00	8.00	0.00
7,400.0	70.01	179.79	7,196.9	-487.8	38.5	488.2	8.00	8.00	0.00
7,500.0	78.01	179.79	7,224.4	-583.9	38.9	584.3	8.00	8.00	0.00
7,600.0	86.01	179.79	7,238.3	-682.8	39.3	683.2	8.00	8.00	0.00
7,649.8	90.00	179.79	7,240.0	-732.6	39.5	733.0	8.00	8.00	0.00
End of Build - 7"									
7,650.6	90.00	179.79	7,240.0	-733.4	39.5	733.8	0.33	0.33	0.00
Landing Pt.460'FNL & 1001'FEL, Sec.22									
7,700.0	90.00	179.79	7,240.0	-782.8	39.6	783.2	0.00	0.00	0.00
7,800.0	90.00	179.79	7,240.0	-882.8	40.0	883.2	0.00	0.00	0.00
7,900.0	90.00	179.79	7,240.0	-982.8	40.4	983.2	0.00	0.00	0.00
8,000.0	90.00	179.79	7,240.0	-1,082.8	40.7	1,083.2	0.00	0.00	0.00
8,100.0	90.00	179.79	7,240.0	-1,182.8	41.1	1,183.2	0.00	0.00	0.00
8,200.0	90.00	179.79	7,240.0	-1,282.8	41.5	1,283.2	0.00	0.00	0.00
8,300.0	90.00	179.79	7,240.0	-1,382.8	41.9	1,383.2	0.00	0.00	0.00
8,400.0	90.00	179.79	7,240.0	-1,482.8	42.2	1,483.2	0.00	0.00	0.00
8,500.0	90.00	179.79	7,240.0	-1,582.8	42.6	1,583.1	0.00	0.00	0.00
8,600.0	90.00	179.79	7,240.0	-1,682.8	43.0	1,683.1	0.00	0.00	0.00
8,700.0	90.00	179.79	7,240.0	-1,782.8	43.3	1,783.1	0.00	0.00	0.00
8,800.0	90.00	179.79	7,240.0	-1,882.8	43.7	1,883.1	0.00	0.00	0.00
8,900.0	90.00	179.79	7,240.0	-1,982.8	44.1	1,983.1	0.00	0.00	0.00
9,000.0	90.00	179.79	7,240.0	-2,082.8	44.4	2,083.1	0.00	0.00	0.00
9,100.0	90.00	179.79	7,240.0	-2,182.8	44.8	2,183.1	0.00	0.00	0.00
9,200.0	90.00	179.79	7,240.0	-2,282.7	45.2	2,283.1	0.00	0.00	0.00
9,300.0	90.00	179.79	7,240.0	-2,382.7	45.6	2,383.1	0.00	0.00	0.00
9,400.0	90.00	179.79	7,240.0	-2,482.7	45.9	2,483.1	0.00	0.00	0.00

Database:	landmark	Local Co-ordinate Reference:	Well SRC Gies D-15-22NHZ
Company:	Synergy Resources	TVD Reference:	WELL @ 4851.0ft (RKB - 13')
Project:	SEC.15-T7N-R65W	MD Reference:	WELL @ 4851.0ft (RKB - 13')
Site:	SRC Gies Pad Sec.15-T7N-R65W	North Reference:	True
Well:	SRC Gies D-15-22NHZ	Survey Calculation Method:	Minimum Curvature
Wellbore:	Wellbore #1		
Design:	Plan #1 (5-7-14)		

Planned Survey									
Measured Depth (ft)	Inclination (°)	Azimuth (°)	Vertical Depth (ft)	+N/-S (ft)	+E/-W (ft)	Vertical Section (ft)	Dogleg Rate (°/100ft)	Build Rate (°/100ft)	Turn Rate (°/100ft)
9,500.0	90.00	179.79	7,240.0	-2,582.7	46.3	2,583.1	0.00	0.00	0.00
9,600.0	90.00	179.79	7,240.0	-2,682.7	46.7	2,683.1	0.00	0.00	0.00
9,700.0	90.00	179.79	7,240.0	-2,782.7	47.0	2,783.1	0.00	0.00	0.00
9,800.0	90.00	179.79	7,240.0	-2,882.7	47.4	2,883.1	0.00	0.00	0.00
9,900.0	90.00	179.79	7,240.0	-2,982.7	47.8	2,983.1	0.00	0.00	0.00
10,000.0	90.00	179.79	7,240.0	-3,082.7	48.1	3,083.1	0.00	0.00	0.00
10,100.0	90.00	179.79	7,240.0	-3,182.7	48.5	3,183.1	0.00	0.00	0.00
10,200.0	90.00	179.79	7,240.0	-3,282.7	48.9	3,283.1	0.00	0.00	0.00
10,300.0	90.00	179.79	7,240.0	-3,382.7	49.3	3,383.1	0.00	0.00	0.00
10,400.0	90.00	179.79	7,240.0	-3,482.7	49.6	3,483.1	0.00	0.00	0.00
10,500.0	90.00	179.79	7,240.0	-3,582.7	50.0	3,583.1	0.00	0.00	0.00
10,600.0	90.00	179.79	7,240.0	-3,682.7	50.4	3,683.1	0.00	0.00	0.00
10,700.0	90.00	179.79	7,240.0	-3,782.7	50.7	3,783.1	0.00	0.00	0.00
10,800.0	90.00	179.79	7,240.0	-3,882.7	51.1	3,883.1	0.00	0.00	0.00
10,900.0	90.00	179.79	7,240.0	-3,982.7	51.5	3,983.1	0.00	0.00	0.00
11,000.0	90.00	179.79	7,240.0	-4,082.7	51.8	4,083.1	0.00	0.00	0.00
11,100.0	90.00	179.79	7,240.0	-4,182.7	52.2	4,183.1	0.00	0.00	0.00
11,200.0	90.00	179.79	7,240.0	-4,282.7	52.6	4,283.1	0.00	0.00	0.00
11,300.0	90.00	179.79	7,240.0	-4,382.7	53.0	4,383.1	0.00	0.00	0.00
11,400.0	90.00	179.79	7,240.0	-4,482.7	53.3	4,483.1	0.00	0.00	0.00
11,434.8	90.00	179.79	7,240.0	-4,517.6	53.5	4,517.9	0.00	0.00	0.00
BHL 470'FSL & 984'FEL, Sec.22									

Casing Points				
Measured Depth (ft)	Vertical Depth (ft)	Name	Casing Diameter (")	Hole Diameter (")
7,649.8	7,240.0	7"	7	7-1/2

Plan Annotations				
Measured Depth (ft)	Vertical Depth (ft)	Local Coordinates		Comment
		+N/-S (ft)	+E/-W (ft)	
2,500.0	2,500.0	0.0	0.0	KOP #1
6,524.8	6,523.8	0.0	0.0	KOP #2
7,649.8	7,240.0	-4.6	10.4	End of Build



Synergy Resources

SEC.15-T7N-R65W

SRC Gies Pad Sec.15-T7N-R65W

SRC Gies D-15-22NHZ

Wellbore #1

Plan #1 (5-7-14)

Anticollision Report

15 May, 2014

Company:	Synergy Resources	Local Co-ordinate Reference:	Well SRC Gies D-15-22NHZ
Project:	SEC.15-T7N-R65W	TVD Reference:	WELL @ 4851.0ft (RKB - 13')
Reference Site:	SRC Gies Pad Sec.15-T7N-R65W	MD Reference:	WELL @ 4851.0ft (RKB - 13')
Site Error:	0.0ft	North Reference:	True
Reference Well:	SRC Gies D-15-22NHZ	Survey Calculation Method:	Minimum Curvature
Well Error:	0.0ft	Output errors are at	2.00 sigma
Reference Wellbore	Wellbore #1	Database:	landmark
Reference Design:	Plan #1 (5-7-14)	Offset TVD Reference:	Offset Datum

Reference	Plan #1 (5-7-14)		
Filter type:	NO GLOBAL FILTER: Using user defined selection & filtering criteria		
Interpolation Method:	MD Interval 100.0ft	Error Model:	ISCSWA
Depth Range:	Unlimited	Scan Method:	Closest Approach 3D
Results Limited by:	Maximum center-center distance of 1,000.0ft	Error Surface:	Elliptical Conic
Warning Levels Evaluated at:	2.00 Sigma		

Survey Tool Program		Date	5/15/2014		
From (ft)	To (ft)	Survey (Wellbore)	Tool Name	Description	
0.0	11,434.0	Plan #1 (5-7-14) (Wellbore #1)	MWD	MWD - Standard	

Summary						
Site Name Offset Well - Wellbore - Design	Reference Measured Depth (ft)	Offset Measured Depth (ft)	Distance Between Centres (ft)	Distance Between Ellipses (ft)	Separation Factor	Warning
SRC Gies Pad Sec.15-T7N-R65W						
SRC Gies 34-15-22CHZ - Wellbore #1 - Plan #1 (5-6-14)	166.3	167.3	99.8	99.3	189.996	CC
SRC Gies 34-15-22CHZ - Wellbore #1 - Plan #1 (5-6-14)	200.0	200.0	99.8	99.1	147.989	SF
SRC Gies 34-15-22CHZ - Wellbore #1 - Plan #1 (5-6-14)	2,500.0	2,456.0	435.2	421.7	32.173	SF
SRC Gies 34-15-22NHZ - Wellbore #1 - Plan #1 (5-7-14)	400.0	400.0	79.8	78.2	50.699	CC, ES
SRC Gies 34-15-22NHZ - Wellbore #1 - Plan #1 (5-7-14)	11,434.8	11,509.0	879.7	703.6	4.996	SF
SRC Gies 44-15-22CHZ - Wellbore #1 - Plan #1 (5-7-14)	800.0	800.0	20.3	16.9	6.020	CC, ES
SRC Gies 44-15-22CHZ - Wellbore #1 - Plan #1 (5-7-14)	11,434.8	11,705.7	348.4	226.8	2.866	SF
SRC Gies 44-15-22NHZ - Wellbore #1 - Plan #1 (5-7-14)	600.0	600.0	40.0	37.6	16.188	CC, ES
SRC Gies 44-15-22NHZ - Wellbore #1 - Plan #1 (5-7-14)	11,434.8	11,441.4	440.4	264.5	2.505	SF
SRC Gies D-15-22CHZ - Wellbore #1 - Plan #1 (5-7-14)	1,400.0	1,400.0	19.7	13.7	3.251	CC, ES
SRC Gies D-15-22CHZ - Wellbore #1 - Plan #1 (5-7-14)	11,434.8	11,715.1	348.0	226.2	2.856	SF
SRC Gies T-15-22CHZ - Wellbore #1 - Plan #1 (5-7-14)	600.0	600.0	59.8	57.3	24.171	CC, ES
SRC Gies T-15-22CHZ - Wellbore #1 - Plan #1 (5-7-14)	11,434.8	11,751.8	712.6	548.5	4.342	SF
SRC Gies T-15-22NHZ - Wellbore #1 - Plan #1 (5-7-14)	1,200.0	1,200.0	39.7	34.6	7.688	CC, ES
SRC Gies T-15-22NHZ - Wellbore #1 - Plan #1 (5-7-14)	11,434.8	11,463.8	439.4	263.6	2.500	SF

SRC Gies Pad Sec.15-T7N-R65W - SRC Gies 34-15-22CHZ - Wellbore #1 - Plan #1 (5-6-14)													Offset Site Error:	0.0 ft
Survey Program: 0-MWD													Offset Well Error:	0.0 ft
Reference		Offset		Semi Major Axis			Distance							
Measured Depth	Vertical Depth	Measured Depth	Vertical Depth	Reference	Offset	Highside Toolface	Offset Wellbore Centre		Between Centres	Between Ellipses	Minimum Separation	Separation Factor	Warning	
Depth (ft)	Depth (ft)	Depth (ft)	Depth (ft)	(ft)	(ft)	(°)	+N/-S (ft)	+E/-W (ft)	(ft)	(ft)	(ft)			
0.0	0.0	1.0	1.0	0.0	0.0	-88.33	2.9	-99.7	99.8	99.8	0.00	N/A		
100.0	100.0	101.0	101.0	0.1	0.1	-88.33	2.9	-99.7	99.8	99.6	0.23	439.550		
166.3	166.3	167.3	167.3	0.3	0.3	-88.33	2.9	-99.7	99.8	99.3	0.53	189.996 CC		
200.0	200.0	200.0	200.0	0.3	0.3	-88.33	2.9	-99.7	99.8	99.1	0.67	147.989 ES		
300.0	300.0	297.6	297.5	0.6	0.5	-88.34	2.9	-101.4	101.5	100.4	1.11	91.531		
400.0	400.0	393.9	393.8	0.8	0.8	-88.38	3.0	-106.3	106.6	105.0	1.55	68.793		
500.0	500.0	489.9	489.4	1.0	1.0	-88.43	3.1	-114.4	115.0	113.0	2.01	57.141		
600.0	600.0	585.2	584.0	1.2	1.3	-88.49	3.3	-125.6	126.8	124.3	2.51	50.608		
700.0	700.0	680.1	677.9	1.5	1.6	-88.56	3.5	-139.9	141.8	138.8	3.03	46.804		
800.0	800.0	778.8	775.2	1.7	1.9	-88.62	3.8	-155.9	158.1	154.5	3.59	44.030		
900.0	900.0	877.4	872.6	1.9	2.3	-88.67	4.0	-172.0	174.4	170.2	4.16	41.926		
1,000.0	1,000.0	976.1	969.9	2.1	2.7	-88.71	4.3	-188.1	190.7	186.0	4.73	40.278		
1,100.0	1,100.0	1,074.8	1,067.3	2.4	3.0	-88.74	4.5	-204.2	207.0	201.7	5.31	38.958		

Company:	Synergy Resources	Local Co-ordinate Reference:	Well SRC Gies D-15-22NHZ
Project:	SEC.15-T7N-R65W	TVD Reference:	WELL @ 4851.0ft (RKB - 13')
Reference Site:	SRC Gies Pad Sec.15-T7N-R65W	MD Reference:	WELL @ 4851.0ft (RKB - 13')
Site Error:	0.0ft	North Reference:	True
Reference Well:	SRC Gies D-15-22NHZ	Survey Calculation Method:	Minimum Curvature
Well Error:	0.0ft	Output errors are at	2.00 sigma
Reference Wellbore	Wellbore #1	Database:	landmark
Reference Design:	Plan #1 (5-7-14)	Offset TVD Reference:	Offset Datum

Offset Design													Offset Site Error:	0.0 ft
Survey Program: 0-MWD													Offset Well Error:	0.0 ft
Reference		Offset		Semi Major Axis			Distance							Warning
Measured Depth (ft)	Vertical Depth (ft)	Measured Depth (ft)	Vertical Depth (ft)	Reference (ft)	Offset (ft)	Highside Toolface (°)	Offset Wellbore Centre +N/-S (ft)	+E/-W (ft)	Between Centres (ft)	Between Ellipses (ft)	Minimum Separation (ft)	Separation Factor		
1,200.0	1,200.0	1,173.4	1,164.6	2.6	3.4	-88.77	4.7	-220.3	223.3	217.4	5.89	37.881		
1,300.0	1,300.0	1,272.1	1,261.9	2.8	3.8	-88.79	5.0	-236.4	239.6	233.1	6.48	36.988		
1,400.0	1,400.0	1,370.8	1,359.3	3.0	4.2	-88.81	5.2	-252.4	255.9	248.9	7.06	36.235		
1,500.0	1,500.0	1,469.4	1,456.6	3.3	4.5	-88.83	5.5	-268.5	272.2	264.6	7.65	35.592		
1,600.0	1,600.0	1,568.1	1,554.0	3.5	4.9	-88.85	5.7	-284.6	288.5	280.3	8.23	35.038		
1,700.0	1,700.0	1,666.7	1,651.3	3.7	5.3	-88.87	6.0	-300.7	304.8	296.0	8.82	34.555		
1,800.0	1,800.0	1,765.4	1,748.6	3.9	5.7	-88.88	6.2	-316.8	321.1	311.7	9.41	34.131		
1,900.0	1,900.0	1,864.1	1,846.0	4.2	6.0	-88.89	6.4	-332.8	337.4	327.4	10.00	33.755		
2,000.0	2,000.0	1,962.7	1,943.3	4.4	6.4	-88.90	6.7	-348.9	353.7	343.1	10.58	33.420		
2,100.0	2,100.0	2,061.4	2,040.7	4.6	6.8	-88.91	6.9	-365.0	370.0	358.9	11.17	33.119		
2,200.0	2,200.0	2,160.1	2,138.0	4.8	7.2	-88.92	7.2	-381.1	386.3	374.6	11.76	32.848		
2,300.0	2,300.0	2,258.7	2,235.4	5.1	7.6	-88.93	7.4	-397.2	402.6	390.3	12.35	32.602		
2,400.0	2,400.0	2,357.4	2,332.7	5.3	7.9	-88.94	7.7	-413.3	418.9	406.0	12.94	32.378		
2,500.0	2,500.0	2,456.0	2,430.0	5.5	8.3	-88.94	7.9	-429.3	435.2	421.7	13.53	32.173 SF		
2,600.0	2,600.0	2,554.6	2,527.3	5.7	8.7	157.00	8.2	-445.4	452.3	440.6	11.74	38.541		
2,700.0	2,700.0	2,652.8	2,624.2	5.9	9.1	157.05	8.4	-461.4	471.0	458.9	12.15	38.764		
2,800.0	2,799.9	2,750.7	2,720.8	6.1	9.5	157.16	8.6	-477.4	491.3	478.7	12.56	39.104		
2,900.0	2,899.7	2,848.3	2,817.1	6.3	9.8	157.35	8.9	-493.3	513.0	500.0	12.98	39.512		
3,000.0	2,999.5	2,945.8	2,913.3	6.5	10.2	157.59	9.1	-509.2	535.0	521.6	13.42	39.869		
3,100.0	3,099.3	3,043.4	3,009.5	6.7	10.6	157.81	9.4	-525.1	557.0	543.2	13.86	40.197		
3,200.0	3,199.1	3,140.9	3,105.8	6.9	11.0	158.05	9.6	-541.0	578.8	564.4	14.32	40.429		
3,300.0	3,299.0	3,238.9	3,202.4	7.1	11.4	158.25	9.8	-557.0	599.1	584.3	14.79	40.505		
3,400.0	3,399.0	3,337.1	3,299.3	7.3	11.7	158.37	10.1	-573.0	617.8	602.5	15.26	40.475		
3,500.0	3,499.0	3,435.6	3,396.5	7.5	12.1	158.42	10.3	-589.0	634.9	619.2	15.72	40.384		
3,600.0	3,599.0	3,534.3	3,493.8	7.7	12.5	-87.59	10.6	-605.1	651.2	635.0	16.17	40.266		
3,700.0	3,699.0	3,632.9	3,591.2	7.9	12.9	-87.63	10.8	-621.2	667.5	650.8	16.64	40.111		
3,800.0	3,799.0	3,731.6	3,688.5	8.2	13.3	-87.67	11.1	-637.3	683.8	666.7	17.11	39.964		
3,900.0	3,899.0	3,830.3	3,785.9	8.4	13.6	-87.70	11.3	-653.4	700.1	682.5	17.58	39.824		
4,000.0	3,999.0	3,928.9	3,883.2	8.6	14.0	-87.73	11.5	-669.4	716.4	698.3	18.05	39.692		
4,100.0	4,099.0	4,027.6	3,980.6	8.8	14.4	-87.77	11.8	-685.5	732.7	714.2	18.52	39.565		
4,200.0	4,199.0	4,126.2	4,077.9	9.1	14.8	-87.79	12.0	-701.6	749.0	730.0	18.99	39.445		
4,300.0	4,299.0	4,224.9	4,175.2	9.3	15.2	-87.82	12.3	-717.7	765.3	745.8	19.46	39.331		
4,400.0	4,399.0	4,323.6	4,272.6	9.5	15.5	-87.85	12.5	-733.8	781.6	761.6	19.93	39.221		
4,500.0	4,499.0	4,422.2	4,369.9	9.7	15.9	-87.88	12.8	-749.9	797.9	777.5	20.40	39.117		
4,600.0	4,599.0	4,520.9	4,467.3	9.9	16.3	-87.90	13.0	-765.9	814.2	793.3	20.87	39.017		
4,700.0	4,699.0	4,619.6	4,564.6	10.2	16.7	-87.93	13.3	-782.0	830.5	809.1	21.34	38.921		
4,800.0	4,799.0	4,718.2	4,662.0	10.4	17.1	-87.95	13.5	-798.1	846.8	825.0	21.81	38.829		
4,900.0	4,899.0	4,816.9	4,759.3	10.6	17.5	-87.97	13.7	-814.2	863.1	840.8	22.28	38.741		
5,000.0	4,999.0	4,915.5	4,856.6	10.8	17.8	-87.99	14.0	-830.3	879.4	856.6	22.75	38.656		
5,100.0	5,099.0	5,014.2	4,954.0	11.1	18.2	-88.01	14.2	-846.4	895.7	872.4	23.22	38.575		
5,200.0	5,199.0	5,112.9	5,051.3	11.3	18.6	-88.03	14.5	-862.4	912.0	888.3	23.69	38.497		
5,300.0	5,299.0	5,211.5	5,148.7	11.5	19.0	-88.05	14.7	-878.5	928.3	904.1	24.16	38.422		
5,400.0	5,399.0	5,310.2	5,246.0	11.7	19.4	-88.07	15.0	-894.6	944.6	919.9	24.63	38.349		
5,500.0	5,499.0	5,408.9	5,343.3	12.0	19.7	-88.09	15.2	-910.7	960.9	935.8	25.10	38.279		
5,600.0	5,599.0	5,507.5	5,440.7	12.2	20.1	-88.11	15.4	-926.8	977.2	951.6	25.57	38.212		
5,700.0	5,699.0	5,606.2	5,538.0	12.4	20.5	-88.12	15.7	-942.8	993.5	967.4	26.04	38.147		

Company:	Synergy Resources	Local Co-ordinate Reference:	Well SRC Gies D-15-22NHZ
Project:	SEC.15-T7N-R65W	TVD Reference:	WELL @ 4851.0ft (RKB - 13')
Reference Site:	SRC Gies Pad Sec.15-T7N-R65W	MD Reference:	WELL @ 4851.0ft (RKB - 13')
Site Error:	0.0ft	North Reference:	True
Reference Well:	SRC Gies D-15-22NHZ	Survey Calculation Method:	Minimum Curvature
Well Error:	0.0ft	Output errors are at	2.00 sigma
Reference Wellbore	Wellbore #1	Database:	landmark
Reference Design:	Plan #1 (5-7-14)	Offset TVD Reference:	Offset Datum

Offset Design													Offset Site Error:	0.0 ft
Survey Program: 0-MWD													Offset Well Error:	0.0 ft
Reference		Offset		Semi Major Axis			Distance							Warning
Measured Depth (ft)	Vertical Depth (ft)	Measured Depth (ft)	Vertical Depth (ft)	Reference (ft)	Offset (ft)	Highside Toolface (°)	Offset Wellbore Centre +N/-S (ft)	+E/-W (ft)	Between Centres (ft)	Between Ellipses (ft)	Minimum Separation (ft)	Separation Factor		
0.0	0.0	0.0	0.0	0.0	0.0	-88.43	2.2	-79.7	79.8					
100.0	100.0	100.0	100.0	0.1	0.1	-88.43	2.2	-79.7	79.8	79.5	0.22	354.891		
200.0	200.0	200.0	200.0	0.3	0.3	-88.43	2.2	-79.7	79.8	79.1	0.67	118.297		
300.0	300.0	300.0	300.0	0.6	0.6	-88.43	2.2	-79.7	79.8	78.6	1.12	70.978		
400.0	400.0	400.0	400.0	0.8	0.8	-88.43	2.2	-79.7	79.8	78.2	1.57	50.699 CC, ES		
500.0	500.0	497.3	497.2	1.0	1.0	-88.45	2.2	-81.4	81.5	79.5	2.01	40.620		
600.0	600.0	594.3	594.1	1.2	1.2	-88.50	2.3	-86.3	86.6	84.1	2.44	35.492		
700.0	700.0	690.9	690.4	1.5	1.4	-88.57	2.4	-94.5	95.0	92.1	2.89	32.866		
800.0	800.0	786.8	785.6	1.7	1.7	-88.65	2.5	-105.8	106.8	103.4	3.37	31.716		
900.0	900.0	885.6	883.4	1.9	2.0	-88.73	2.6	-119.4	120.5	116.7	3.88	31.092		
1,000.0	1,000.0	984.6	981.6	2.1	2.3	-88.79	2.8	-133.0	134.3	129.9	4.40	30.529		
1,100.0	1,100.0	1,083.7	1,079.7	2.4	2.6	-88.84	3.0	-146.6	148.0	143.1	4.93	30.033		
1,200.0	1,200.0	1,182.7	1,177.8	2.6	2.9	-88.89	3.1	-160.2	161.7	156.3	5.46	29.601		
1,300.0	1,300.0	1,281.8	1,275.9	2.8	3.3	-88.92	3.3	-173.8	175.5	169.5	6.00	29.227		
1,400.0	1,400.0	1,380.8	1,374.0	3.0	3.6	-88.95	3.4	-187.4	189.2	182.7	6.55	28.902		
1,500.0	1,500.0	1,479.9	1,472.1	3.3	3.9	-88.98	3.6	-201.0	203.0	195.9	7.09	28.617		
1,600.0	1,600.0	1,578.9	1,570.2	3.5	4.3	-89.00	3.7	-214.6	216.7	209.1	7.64	28.367		
1,700.0	1,700.0	1,678.0	1,668.3	3.7	4.6	-89.02	3.9	-228.2	230.4	222.2	8.19	28.145		
1,800.0	1,800.0	1,777.0	1,766.5	3.9	4.9	-89.04	4.1	-241.8	244.2	235.4	8.74	27.948		
1,900.0	1,900.0	1,876.1	1,864.6	4.2	5.3	-89.06	4.2	-255.4	257.9	248.6	9.29	27.771		
2,000.0	2,000.0	1,975.1	1,962.7	4.4	5.6	-89.07	4.4	-269.0	271.6	261.8	9.84	27.613		
2,100.0	2,100.0	2,074.2	2,060.8	4.6	5.9	-89.08	4.5	-282.6	285.4	275.0	10.39	27.469		
2,200.0	2,200.0	2,173.2	2,158.9	4.8	6.3	-89.09	4.7	-296.3	299.1	288.2	10.94	27.339		
2,300.0	2,300.0	2,272.3	2,257.0	5.1	6.6	-89.11	4.8	-309.9	312.9	301.4	11.49	27.220		
2,400.0	2,400.0	2,371.3	2,355.1	5.3	7.0	-89.12	5.0	-323.5	326.6	314.6	12.05	27.112		
2,500.0	2,500.0	2,470.4	2,453.2	5.5	7.3	-89.12	5.2	-337.1	340.3	327.7	12.60	27.012		
2,600.0	2,600.0	2,569.3	2,551.2	5.7	7.6	156.85	5.3	-350.7	354.9	343.3	11.55	30.717		
2,700.0	2,700.0	2,668.0	2,649.0	5.9	8.0	156.93	5.5	-364.2	371.0	359.0	11.96	31.008		
2,800.0	2,799.9	2,766.4	2,746.5	6.1	8.3	157.10	5.6	-377.7	388.7	376.3	12.37	31.411		
2,900.0	2,899.7	2,864.5	2,843.7	6.3	8.7	157.36	5.8	-391.2	407.9	395.1	12.79	31.888		
3,000.0	2,999.5	2,962.6	2,940.8	6.5	9.0	157.66	5.9	-404.7	427.3	414.1	13.22	32.323		
3,100.0	3,099.3	3,060.7	3,037.9	6.7	9.3	157.93	6.1	-418.2	446.8	433.2	13.65	32.725		
3,200.0	3,199.1	3,158.8	3,135.1	6.9	9.7	158.21	6.2	-431.6	466.0	451.9	14.10	33.042		
3,300.0	3,299.0	3,257.2	3,232.6	7.1	10.0	158.42	6.4	-445.2	483.8	469.2	14.57	33.208		
3,400.0	3,399.0	3,355.9	3,330.3	7.3	10.4	158.54	6.6	-458.7	499.9	484.9	15.03	33.259		
3,500.0	3,499.0	3,454.8	3,428.3	7.5	10.7	158.58	6.7	-472.3	514.5	499.0	15.48	33.236		
3,600.0	3,599.0	3,553.8	3,526.4	7.7	11.0	-87.45	6.9	-485.9	528.2	512.3	15.92	33.172		
3,700.0	3,699.0	3,652.9	3,624.6	7.9	11.4	-87.50	7.0	-499.5	542.0	525.6	16.39	33.073		
3,800.0	3,799.0	3,752.0	3,722.7	8.2	11.7	-87.54	7.2	-513.1	555.7	538.8	16.85	32.979		
3,900.0	3,899.0	3,851.0	3,820.8	8.4	12.1	-87.59	7.3	-526.7	569.4	552.1	17.31	32.890		
4,000.0	3,999.0	3,950.1	3,918.9	8.6	12.4	-87.63	7.5	-540.3	583.2	565.4	17.78	32.806		
4,100.0	4,099.0	4,049.1	4,017.0	8.8	12.8	-87.67	7.7	-553.9	596.9	578.6	18.24	32.725		
4,200.0	4,199.0	4,148.2	4,115.1	9.1	13.1	-87.71	7.8	-567.5	610.6	591.9	18.70	32.649		
4,300.0	4,299.0	4,247.2	4,213.2	9.3	13.4	-87.74	8.0	-581.2	624.3	605.2	19.17	32.575		
4,400.0	4,399.0	4,346.3	4,311.3	9.5	13.8	-87.78	8.1	-594.8	638.1	618.5	19.63	32.505		
4,500.0	4,499.0	4,445.3	4,409.5	9.7	14.1	-87.81	8.3	-608.4	651.8	631.7	20.09	32.439		
4,600.0	4,599.0	4,544.4	4,507.6	9.9	14.5	-87.84	8.4	-622.0	665.5	645.0	20.56	32.374		
4,700.0	4,699.0	4,643.4	4,605.7	10.2	14.8	-87.87	8.6	-635.6	679.3	658.3	21.02	32.313		
4,800.0	4,799.0	4,742.5	4,703.8	10.4	15.2	-87.90	8.8	-649.2	693.0	671.5	21.49	32.254		
4,900.0	4,899.0	4,841.5	4,801.9	10.6	15.5	-87.93	8.9	-662.8	706.7	684.8	21.95	32.198		
5,000.0	4,999.0	4,940.6	4,900.0	10.8	15.8	-87.96	9.1	-676.4	720.5	698.1	22.41	32.144		
5,100.0	5,099.0	5,039.6	4,998.1	11.1	16.2	-87.98	9.2	-690.0	734.2	711.3	22.88	32.091		

CC - Min centre to center distance or convergent point, SF - min separation factor, ES - min ellipse separation

Company:	Synergy Resources	Local Co-ordinate Reference:	Well SRC Gies D-15-22NHZ
Project:	SEC.15-T7N-R65W	TVD Reference:	WELL @ 4851.0ft (RKB - 13')
Reference Site:	SRC Gies Pad Sec.15-T7N-R65W	MD Reference:	WELL @ 4851.0ft (RKB - 13')
Site Error:	0.0ft	North Reference:	True
Reference Well:	SRC Gies D-15-22NHZ	Survey Calculation Method:	Minimum Curvature
Well Error:	0.0ft	Output errors are at	2.00 sigma
Reference Wellbore	Wellbore #1	Database:	landmark
Reference Design:	Plan #1 (5-7-14)	Offset TVD Reference:	Offset Datum

Offset Design												Offset Site Error:	0.0 ft
Survey Program: 0-MWD												Offset Well Error:	0.0 ft
Reference		Offset		Semi Major Axis			Distance						Warning
Measured Depth (ft)	Vertical Depth (ft)	Measured Depth (ft)	Vertical Depth (ft)	Reference (ft)	Offset (ft)	Highside Toolface (°)	Offset Wellbore Centre +N/-S (ft)	+E/-W (ft)	Between Centres (ft)	Between Ellipses (ft)	Minimum Separation (ft)	Separation Factor	
5,200.0	5,199.0	5,138.7	5,096.2	11.3	16.5	-88.01	9.4	-703.6	748.0	724.6	23.34	32.041	
5,300.0	5,299.0	5,237.7	5,194.4	11.5	16.9	-88.03	9.5	-717.2	761.7	737.9	23.81	31.993	
5,400.0	5,399.0	5,336.8	5,292.5	11.7	17.2	-88.05	9.7	-730.8	775.4	751.1	24.27	31.946	
5,500.0	5,499.0	5,435.8	5,390.6	12.0	17.6	-88.08	9.8	-744.4	789.2	764.4	24.74	31.901	
5,600.0	5,599.0	5,534.9	5,488.7	12.2	17.9	-88.10	10.0	-758.0	802.9	777.7	25.20	31.858	
5,700.0	5,699.0	5,633.9	5,586.8	12.4	18.2	-88.12	10.2	-771.6	816.6	791.0	25.67	31.816	
5,800.0	5,799.0	5,733.0	5,684.9	12.6	18.6	-88.14	10.3	-785.3	830.4	804.2	26.13	31.776	
5,900.0	5,899.0	5,832.0	5,783.0	12.8	18.9	-88.16	10.5	-798.9	844.1	817.5	26.60	31.737	
6,000.0	5,999.0	5,931.1	5,881.1	13.1	19.3	-88.18	10.6	-812.5	857.8	830.8	27.06	31.699	
6,100.0	6,099.0	6,062.2	6,011.3	13.3	19.6	-88.20	10.8	-828.6	870.2	842.7	27.56	31.580	
6,200.0	6,199.0	6,205.7	6,154.4	13.5	19.9	-88.21	10.9	-839.4	877.8	849.8	28.04	31.309	
6,300.0	6,299.0	6,350.0	6,298.5	13.7	20.1	-88.22	11.0	-843.1	880.4	851.9	28.51	30.883	
6,400.0	6,399.0	6,450.4	6,399.0	14.0	20.3	-88.22	11.0	-843.1	880.4	851.4	28.92	30.445	
6,500.0	6,499.0	6,550.4	6,499.0	14.2	20.4	-88.22	11.0	-843.1	880.4	851.0	29.33	30.018	
6,600.0	6,598.8	6,653.8	6,602.2	14.4	20.5	91.98	6.7	-843.1	880.4	850.7	29.70	29.638	
6,700.0	6,697.2	6,758.2	6,704.7	14.6	20.7	91.93	-12.2	-843.1	880.3	850.3	30.07	29.279	
6,800.0	6,792.2	6,862.4	6,803.3	14.8	20.8	91.84	-45.8	-842.9	880.3	849.8	30.46	28.896	
6,900.0	6,882.0	6,966.3	6,895.7	15.0	21.0	91.72	-93.2	-842.7	880.2	849.3	30.94	28.445	
7,000.0	6,964.9	7,070.0	6,980.1	15.3	21.2	91.55	-153.2	-842.5	880.1	848.6	31.57	27.875	
7,100.0	7,039.1	7,173.1	7,054.6	15.7	21.5	91.36	-224.4	-842.3	880.1	847.7	32.42	27.146	
7,200.0	7,103.3	7,275.9	7,117.9	16.3	21.9	91.14	-305.2	-842.0	880.0	846.5	33.54	26.236	
7,300.0	7,156.2	7,378.0	7,168.7	17.0	22.4	90.90	-393.8	-841.6	879.9	845.0	34.98	25.158	
7,400.0	7,196.9	7,479.6	7,206.3	17.8	23.0	90.64	-488.1	-841.3	879.9	843.1	36.73	23.952	
7,500.0	7,224.4	7,580.7	7,230.0	18.9	23.8	90.37	-586.2	-840.9	879.8	841.0	38.80	22.677	
7,600.0	7,238.3	7,681.1	7,239.7	20.0	24.7	90.10	-686.0	-840.5	879.8	838.7	41.12	21.396	
7,700.0	7,240.0	7,781.1	7,240.0	21.3	25.7	90.00	-786.0	-840.2	879.8	836.2	43.64	20.158	
7,800.0	7,240.0	7,881.1	7,240.0	22.7	26.9	90.00	-886.0	-839.8	879.8	833.5	46.34	18.984	
7,900.0	7,240.0	7,981.1	7,240.0	24.1	28.1	90.00	-986.0	-839.4	879.8	830.6	49.20	17.884	
8,000.0	7,240.0	8,081.1	7,240.0	25.6	29.4	90.00	-1,086.0	-839.0	879.8	827.6	52.18	16.862	
8,100.0	7,240.0	8,181.1	7,240.0	27.2	30.8	90.00	-1,186.0	-838.7	879.8	824.5	55.26	15.920	
8,200.0	7,240.0	8,281.1	7,240.0	28.8	32.2	90.00	-1,286.0	-838.3	879.8	821.3	58.44	15.054	
8,300.0	7,240.0	8,381.1	7,240.0	30.4	33.7	90.00	-1,386.0	-837.9	879.8	818.1	61.70	14.260	
8,400.0	7,240.0	8,481.1	7,240.0	32.1	35.3	90.00	-1,486.0	-837.5	879.8	814.8	65.02	13.531	
8,500.0	7,240.0	8,581.1	7,240.0	33.8	36.8	90.00	-1,586.0	-837.2	879.8	811.4	68.39	12.864	
8,600.0	7,240.0	8,681.1	7,240.0	35.5	38.4	90.00	-1,686.0	-836.8	879.8	808.0	71.82	12.250	
8,700.0	7,240.0	8,781.1	7,240.0	37.2	40.1	90.00	-1,786.0	-836.4	879.8	804.5	75.28	11.686	
8,800.0	7,240.0	8,881.1	7,240.0	39.0	41.7	90.00	-1,886.0	-836.1	879.8	801.0	78.78	11.167	
8,900.0	7,240.0	8,981.1	7,240.0	40.7	43.4	90.00	-1,986.0	-835.7	879.8	797.5	82.31	10.688	
9,000.0	7,240.0	9,081.1	7,240.0	42.5	45.1	90.00	-2,086.0	-835.3	879.8	793.9	85.87	10.245	
9,100.0	7,240.0	9,181.1	7,240.0	44.3	46.8	90.00	-2,186.0	-834.9	879.8	790.3	89.46	9.834	
9,200.0	7,240.0	9,281.1	7,240.0	46.1	48.6	90.00	-2,286.0	-834.6	879.8	786.7	93.06	9.454	
9,300.0	7,240.0	9,381.1	7,240.0	48.0	50.3	90.00	-2,386.0	-834.2	879.8	783.1	96.68	9.099	
9,400.0	7,240.0	9,481.1	7,240.0	49.8	52.1	90.00	-2,486.0	-833.8	879.7	779.4	100.33	8.769	
9,500.0	7,240.0	9,581.1	7,240.0	51.6	53.8	90.00	-2,586.0	-833.4	879.7	775.8	103.98	8.461	
9,600.0	7,240.0	9,681.1	7,240.0	53.4	55.6	90.00	-2,686.0	-833.1	879.7	772.1	107.65	8.172	
9,700.0	7,240.0	9,781.1	7,240.0	55.3	57.4	90.00	-2,786.0	-832.7	879.7	768.4	111.33	7.902	
9,800.0	7,240.0	9,881.1	7,240.0	57.1	59.2	90.00	-2,886.0	-832.3	879.7	764.7	115.02	7.648	
9,900.0	7,240.0	9,981.1	7,240.0	59.0	61.0	90.00	-2,986.0	-832.0	879.7	761.0	118.73	7.410	
10,000.0	7,240.0	10,081.1	7,240.0	60.9	62.8	90.00	-3,086.0	-831.6	879.7	757.3	122.44	7.185	
10,100.0	7,240.0	10,181.1	7,240.0	62.7	64.7	90.00	-3,186.0	-831.2	879.7	753.6	126.16	6.973	
10,200.0	7,240.0	10,281.1	7,240.0	64.6	66.5	90.00	-3,286.0	-830.8	879.7	749.8	129.89	6.773	
10,300.0	7,240.0	10,381.1	7,240.0	66.5	68.3	90.00	-3,386.0	-830.5	879.7	746.1	133.62	6.584	

CC - Min centre to center distance or convergent point, SF - min separation factor, ES - min ellipse separation

Company:	Synergy Resources	Local Co-ordinate Reference:	Well SRC Gies D-15-22NHZ
Project:	SEC.15-T7N-R65W	TVD Reference:	WELL @ 4851.0ft (RKB - 13')
Reference Site:	SRC Gies Pad Sec.15-T7N-R65W	MD Reference:	WELL @ 4851.0ft (RKB - 13')
Site Error:	0.0ft	North Reference:	True
Reference Well:	SRC Gies D-15-22NHZ	Survey Calculation Method:	Minimum Curvature
Well Error:	0.0ft	Output errors are at	2.00 sigma
Reference Wellbore	Wellbore #1	Database:	landmark
Reference Design:	Plan #1 (5-7-14)	Offset TVD Reference:	Offset Datum

Offset Design SRC Gies Pad Sec.15-T7N-R65W - SRC Gies 34-15-22NHZ - Wellbore #1 - Plan #1 (5-7-14)												Offset Site Error:	0.0 ft
Survey Program: 0-MWD												Offset Well Error:	0.0 ft
Reference		Offset		Semi Major Axis			Distance						Warning
Measured Depth (ft)	Vertical Depth (ft)	Measured Depth (ft)	Vertical Depth (ft)	Reference (ft)	Offset (ft)	Highside Toolface (°)	Offset Wellbore Centre +N/-S (ft)	+E/-W (ft)	Between Centres (ft)	Between Ellipses (ft)	Minimum Separation (ft)	Separation Factor	
10,400.0	7,240.0	10,481.1	7,240.0	68.3	70.2	90.00	-3,486.0	-830.1	879.7	742.4	137.36	6.404	
10,500.0	7,240.0	10,581.1	7,240.0	70.2	72.0	90.00	-3,586.0	-829.7	879.7	738.6	141.11	6.234	
10,600.0	7,240.0	10,681.1	7,240.0	72.1	73.8	90.00	-3,686.0	-829.3	879.7	734.9	144.86	6.073	
10,700.0	7,240.0	10,781.1	7,240.0	74.0	75.7	90.00	-3,786.0	-829.0	879.7	731.1	148.62	5.919	
10,800.0	7,240.0	10,881.1	7,240.0	75.8	77.5	90.00	-3,886.0	-828.6	879.7	727.3	152.38	5.773	
10,900.0	7,240.0	10,981.1	7,240.0	77.7	79.4	90.00	-3,986.0	-828.2	879.7	723.6	156.14	5.634	
11,000.0	7,240.0	11,081.1	7,240.0	79.6	81.3	90.00	-4,086.0	-827.8	879.7	719.8	159.91	5.501	
11,100.0	7,240.0	11,181.1	7,240.0	81.5	83.1	90.00	-4,186.0	-827.5	879.7	716.0	163.69	5.374	
11,200.0	7,240.0	11,281.1	7,240.0	83.4	85.0	90.00	-4,286.0	-827.1	879.7	712.2	167.47	5.253	
11,300.0	7,240.0	11,381.1	7,240.0	85.3	86.9	90.00	-4,386.0	-826.7	879.7	708.4	171.25	5.137	
11,400.0	7,240.0	11,481.1	7,240.0	87.2	88.7	90.00	-4,486.0	-826.4	879.7	704.7	175.03	5.026	
11,425.4	7,240.0	11,506.5	7,240.0	87.6	89.2	90.00	-4,511.5	-826.3	879.7	703.8	175.90	5.001	
11,434.8	7,240.0	11,509.0	7,240.0	87.7	89.3	90.00	-4,513.9	-826.2	879.7	703.6	176.09	4.996 SF	

Company:	Synergy Resources	Local Co-ordinate Reference:	Well SRC Gies D-15-22NHZ
Project:	SEC.15-T7N-R65W	TVD Reference:	WELL @ 4851.0ft (RKB - 13')
Reference Site:	SRC Gies Pad Sec.15-T7N-R65W	MD Reference:	WELL @ 4851.0ft (RKB - 13')
Site Error:	0.0ft	North Reference:	True
Reference Well:	SRC Gies D-15-22NHZ	Survey Calculation Method:	Minimum Curvature
Well Error:	0.0ft	Output errors are at	2.00 sigma
Reference Wellbore	Wellbore #1	Database:	landmark
Reference Design:	Plan #1 (5-7-14)	Offset TVD Reference:	Offset Datum

Offset Design													Offset Site Error:	0.0 ft
Survey Program: 0-MWD													Offset Well Error:	0.0 ft
Reference		Offset		Semi Major Axis			Distance							Warning
Measured Depth (ft)	Vertical Depth (ft)	Measured Depth (ft)	Vertical Depth (ft)	Reference (ft)	Offset (ft)	Highside Toolface (°)	Offset Wellbore Centre +N/-S (ft)	+E/-W (ft)	Between Centres (ft)	Between Ellipses (ft)	Minimum Separation (ft)	Separation Factor		
0.0	0.0	0.0	0.0	0.0	0.0	92.06	-0.7	20.3	20.3					
100.0	100.0	100.0	100.0	0.1	0.1	92.06	-0.7	20.3	20.3	20.1	0.22	90.293		
200.0	200.0	200.0	200.0	0.3	0.3	92.06	-0.7	20.3	20.3	19.6	0.67	30.098		
300.0	300.0	300.0	300.0	0.6	0.6	92.06	-0.7	20.3	20.3	19.2	1.12	18.059		
400.0	400.0	400.0	400.0	0.8	0.8	92.06	-0.7	20.3	20.3	18.7	1.57	12.899		
500.0	500.0	500.0	500.0	1.0	1.0	92.06	-0.7	20.3	20.3	18.3	2.02	10.033		
600.0	600.0	600.0	600.0	1.2	1.2	92.06	-0.7	20.3	20.3	17.8	2.47	8.208		
700.0	700.0	700.0	700.0	1.5	1.5	92.06	-0.7	20.3	20.3	17.4	2.92	6.946		
800.0	800.0	800.0	800.0	1.7	1.7	92.06	-0.7	20.3	20.3	16.9	3.37	6.020 CC, ES		
900.0	900.0	899.3	899.2	1.9	1.9	92.32	-0.9	22.0	22.0	18.2	3.81	5.788		
1,000.0	1,000.0	998.3	998.1	2.1	2.1	92.89	-1.4	27.1	27.2	23.0	4.23	6.428		
1,100.0	1,100.0	1,097.7	1,097.2	2.4	2.3	93.44	-2.1	34.8	35.0	30.3	4.67	7.491		
1,200.0	1,200.0	1,197.4	1,196.6	2.6	2.5	93.80	-2.8	42.7	43.0	37.8	5.12	8.387		
1,300.0	1,300.0	1,297.0	1,295.9	2.8	2.8	94.05	-3.6	50.6	50.9	45.3	5.58	9.129		
1,400.0	1,400.0	1,396.7	1,395.3	3.0	3.0	94.22	-4.3	58.5	58.9	52.8	6.04	9.751		
1,500.0	1,500.0	1,496.4	1,494.7	3.3	3.3	94.36	-5.1	66.4	66.8	60.3	6.50	10.278		
1,600.0	1,600.0	1,596.1	1,594.0	3.5	3.5	94.47	-5.8	74.3	74.8	67.8	6.97	10.730		
1,700.0	1,700.0	1,695.8	1,693.4	3.7	3.8	94.55	-6.6	82.2	82.7	75.3	7.44	11.122		
1,800.0	1,800.0	1,795.5	1,792.8	3.9	4.0	94.63	-7.3	90.1	90.7	82.8	7.91	11.464		
1,900.0	1,900.0	1,895.1	1,892.1	4.2	4.3	94.69	-8.0	98.0	98.7	90.3	8.39	11.765		
2,000.0	2,000.0	1,994.8	1,991.5	4.4	4.5	94.74	-8.8	105.9	106.6	97.8	8.86	12.032		
2,100.0	2,100.0	2,094.5	2,090.9	4.6	4.8	94.78	-9.5	113.8	114.6	105.2	9.34	12.270		
2,200.0	2,200.0	2,194.2	2,190.2	4.8	5.1	94.82	-10.3	121.7	122.5	112.7	9.82	12.484		
2,300.0	2,300.0	2,293.9	2,289.6	5.1	5.3	94.85	-11.0	129.6	130.5	120.2	10.29	12.677		
2,400.0	2,400.0	2,293.6	2,289.0	5.3	5.6	94.88	-11.7	137.5	138.4	127.7	10.77	12.851		
2,500.0	2,500.0	2,493.2	2,488.3	5.5	5.8	94.91	-12.5	145.4	146.4	135.2	11.25	13.011		
2,600.0	2,600.0	2,593.0	2,587.8	5.7	6.1	-19.17	-13.2	153.3	153.5	142.2	11.32	13.564		
2,700.0	2,700.0	2,692.8	2,687.3	5.9	6.4	-19.44	-14.0	161.2	159.0	147.3	11.73	13.554		
2,800.0	2,799.9	2,792.7	2,786.9	6.1	6.6	-19.89	-14.7	169.1	162.9	150.7	12.15	13.409		
2,900.0	2,899.7	2,892.7	2,886.5	6.3	6.9	-20.53	-15.5	177.1	165.2	152.7	12.57	13.150		
3,000.0	2,999.5	2,992.7	2,986.2	6.5	7.2	-21.20	-16.2	185.0	167.3	154.3	12.99	12.880		
3,100.0	3,099.3	3,092.6	3,085.8	6.7	7.4	-21.85	-17.0	192.9	169.4	156.0	13.42	12.626		
3,200.0	3,199.1	3,192.6	3,185.5	6.9	7.7	-22.45	-17.7	200.8	171.8	158.0	13.85	12.403		
3,300.0	3,299.0	3,292.5	3,285.1	7.1	8.0	-22.83	-18.4	208.7	175.7	161.4	14.29	12.294		
3,400.0	3,399.0	3,392.3	3,384.6	7.3	8.2	-22.99	-19.2	216.6	181.3	166.5	14.73	12.304		
3,500.0	3,499.0	3,492.1	3,484.0	7.5	8.5	-22.94	-19.9	224.5	188.4	173.2	15.15	12.434		
3,600.0	3,599.0	3,591.8	3,583.4	7.7	8.8	91.25	-20.7	232.4	196.3	180.7	15.58	12.601		
3,700.0	3,699.0	3,691.4	3,682.8	7.9	9.0	91.41	-21.4	240.3	204.2	188.2	16.03	12.742		
3,800.0	3,799.0	3,791.9	3,782.9	8.2	9.3	91.56	-22.2	248.3	212.2	195.7	16.48	12.874		
3,900.0	3,899.0	3,899.9	3,890.7	8.4	9.5	91.67	-22.7	254.4	217.9	201.0	16.90	12.891		
4,000.0	3,999.0	4,008.1	3,998.9	8.6	9.7	91.70	-22.9	256.5	219.8	202.5	17.33	12.685		
4,100.0	4,099.0	4,108.2	4,099.0	8.8	9.9	91.70	-22.9	256.5	219.8	202.0	17.75	12.384		
4,200.0	4,199.0	4,208.2	4,199.0	9.1	10.1	91.70	-22.9	256.5	219.8	201.6	18.17	12.094		
4,300.0	4,299.0	4,308.2	4,299.0	9.3	10.3	91.70	-22.9	256.5	219.8	201.2	18.60	11.817		
4,400.0	4,399.0	4,408.2	4,399.0	9.5	10.4	91.70	-22.9	256.5	219.8	200.8	19.03	11.552		
4,500.0	4,499.0	4,508.2	4,499.0	9.7	10.6	91.70	-22.9	256.5	219.8	200.3	19.45	11.297		
4,600.0	4,599.0	4,608.2	4,599.0	9.9	10.8	91.70	-22.9	256.5	219.8	199.9	19.88	11.053		
4,700.0	4,699.0	4,708.2	4,699.0	10.2	11.0	91.70	-22.9	256.5	219.8	199.5	20.31	10.819		
4,800.0	4,799.0	4,808.2	4,799.0	10.4	11.2	91.70	-22.9	256.5	219.8	199.0	20.74	10.594		
4,900.0	4,899.0	4,908.2	4,899.0	10.6	11.4	91.70	-22.9	256.5	219.8	198.6	21.18	10.378		
5,000.0	4,999.0	5,008.2	4,999.0	10.8	11.6	91.70	-22.9	256.5	219.8	198.2	21.61	10.171		
5,100.0	5,099.0	5,108.2	5,099.0	11.1	11.8	91.70	-22.9	256.5	219.8	197.7	22.04	9.971		

CC - Min centre to center distance or convergent point, SF - min separation factor, ES - min ellipse separation

Company:	Synergy Resources	Local Co-ordinate Reference:	Well SRC Gies D-15-22NHZ
Project:	SEC.15-T7N-R65W	TVD Reference:	WELL @ 4851.0ft (RKB - 13')
Reference Site:	SRC Gies Pad Sec.15-T7N-R65W	MD Reference:	WELL @ 4851.0ft (RKB - 13')
Site Error:	0.0ft	North Reference:	True
Reference Well:	SRC Gies D-15-22NHZ	Survey Calculation Method:	Minimum Curvature
Well Error:	0.0ft	Output errors are at	2.00 sigma
Reference Wellbore	Wellbore #1	Database:	landmark
Reference Design:	Plan #1 (5-7-14)	Offset TVD Reference:	Offset Datum

Offset Design												Offset Site Error:	0.0 ft
Survey Program: 0-MWD												Offset Well Error:	0.0 ft
Reference		Offset		Semi Major Axis			Distance						
Measured Depth (ft)	Vertical Depth (ft)	Measured Depth (ft)	Vertical Depth (ft)	Reference (ft)	Offset (ft)	Highside Toolface (°)	Offset Wellbore Centre +N/-S (ft)	+E/-W (ft)	Between Centres (ft)	Between Ellipses (ft)	Minimum Separation (ft)	Separation Factor	Warning
5,200.0	5,199.0	5,208.2	5,199.0	11.3	12.0	91.70	-22.9	256.5	219.8	197.3	22.48	9.778	
5,300.0	5,299.0	5,308.2	5,299.0	11.5	12.2	91.70	-22.9	256.5	219.8	196.9	22.91	9.593	
5,400.0	5,399.0	5,408.2	5,399.0	11.7	12.4	91.70	-22.9	256.5	219.8	196.4	23.35	9.414	
5,500.0	5,499.0	5,508.2	5,499.0	12.0	12.6	91.70	-22.9	256.5	219.8	196.0	23.78	9.242	
5,600.0	5,599.0	5,608.2	5,599.0	12.2	12.8	91.70	-22.9	256.5	219.8	195.6	24.22	9.075	
5,700.0	5,699.0	5,708.2	5,699.0	12.4	13.0	91.70	-22.9	256.5	219.8	195.1	24.65	8.915	
5,800.0	5,799.0	5,808.2	5,799.0	12.6	13.2	91.70	-22.9	256.5	219.8	194.7	25.09	8.759	
5,900.0	5,899.0	5,908.2	5,899.0	12.8	13.4	91.70	-22.9	256.5	219.8	194.3	25.53	8.609	
6,000.0	5,999.0	6,008.2	5,999.0	13.1	13.6	91.70	-22.9	256.5	219.8	193.8	25.97	8.464	
6,100.0	6,099.0	6,108.2	6,099.0	13.3	13.8	91.70	-22.9	256.5	219.8	193.4	26.40	8.324	
6,200.0	6,199.0	6,208.2	6,199.0	13.5	14.0	91.70	-22.9	256.5	219.8	192.9	26.84	8.188	
6,300.0	6,299.0	6,308.2	6,299.0	13.7	14.3	91.70	-22.9	256.5	219.8	192.5	27.28	8.056	
6,400.0	6,399.0	6,408.2	6,399.0	14.0	14.5	91.70	-22.9	256.5	219.8	192.1	27.72	7.928	
6,500.0	6,499.0	6,508.2	6,499.0	14.2	14.7	91.70	-22.9	256.5	219.8	191.6	28.16	7.805	
6,600.0	6,598.8	6,608.0	6,598.8	14.4	14.9	-89.12	-22.9	256.5	219.7	191.1	28.57	7.688	
6,627.5	6,626.1	6,635.3	6,626.1	14.4	14.9	-90.00	-22.9	256.5	219.7	191.0	28.68	7.658	
6,700.0	6,697.2	6,706.4	6,697.2	14.6	15.1	-93.53	-22.9	256.5	220.1	191.1	28.97	7.597	
6,800.0	6,792.2	6,801.5	6,792.2	14.8	15.3	-100.72	-22.9	256.5	224.2	194.9	29.34	7.642	
6,900.0	6,882.0	6,903.1	6,883.5	15.0	15.5	-109.20	-29.9	256.5	234.6	205.1	29.55	7.942	
7,000.0	6,964.9	7,011.3	6,999.1	15.3	15.7	-116.88	-53.0	256.6	250.1	220.6	29.50	8.478	
7,100.0	7,039.1	7,127.0	7,106.9	15.7	16.0	-123.53	-95.0	256.8	268.9	239.7	29.18	9.214	
7,200.0	7,103.3	7,251.3	7,213.4	16.3	16.3	-129.10	-158.7	257.0	289.0	260.4	28.66	10.087	
7,300.0	7,156.2	7,384.8	7,313.7	17.0	16.8	-133.58	-246.5	257.3	308.7	280.6	28.11	10.984	
7,400.0	7,196.9	7,527.6	7,401.0	17.8	17.6	-136.98	-359.3	257.8	325.9	298.2	27.75	11.745	
7,500.0	7,224.4	7,678.9	7,467.1	18.9	18.9	-139.33	-495.0	258.3	339.0	311.2	27.84	12.176	
7,600.0	7,238.3	7,836.4	7,504.1	20.0	20.5	-140.61	-647.8	258.9	346.6	318.0	28.61	12.114	
7,700.0	7,240.0	8,970.8	7,510.0	21.3	22.1	-140.86	-781.9	259.4	348.1	318.0	30.17	11.540	
7,800.0	7,240.0	8,070.8	7,510.0	22.7	23.5	-140.86	-881.9	259.8	348.1	316.2	31.94	10.899	
7,900.0	7,240.0	8,170.8	7,510.0	24.1	24.9	-140.86	-981.9	260.1	348.1	314.3	33.83	10.290	
8,000.0	7,240.0	8,270.8	7,510.0	25.6	26.3	-140.85	-1,081.9	260.5	348.1	312.3	35.82	9.718	
8,100.0	7,240.0	8,370.8	7,510.0	27.2	27.8	-140.85	-1,181.9	260.9	348.2	310.3	37.90	9.186	
8,200.0	7,240.0	8,470.8	7,510.0	28.8	29.4	-140.85	-1,281.9	261.3	348.2	308.1	40.05	8.693	
8,300.0	7,240.0	8,570.8	7,510.0	30.4	31.0	-140.85	-1,381.9	261.7	348.2	305.9	42.26	8.238	
8,400.0	7,240.0	8,670.8	7,510.0	32.1	32.7	-140.85	-1,481.9	262.1	348.2	303.7	44.53	7.820	
8,500.0	7,240.0	8,770.8	7,510.0	33.8	34.3	-140.85	-1,581.9	262.4	348.2	301.4	46.83	7.435	
8,600.0	7,240.0	8,870.8	7,510.0	35.5	36.0	-140.84	-1,681.9	262.8	348.2	299.0	49.18	7.080	
8,700.0	7,240.0	8,970.8	7,510.0	37.2	37.8	-140.84	-1,781.9	263.2	348.2	296.6	51.56	6.754	
8,800.0	7,240.0	9,070.8	7,510.0	39.0	39.5	-140.84	-1,881.9	263.6	348.2	294.2	53.96	6.453	
8,900.0	7,240.0	9,170.8	7,510.0	40.7	41.3	-140.84	-1,981.9	264.0	348.2	291.8	56.40	6.174	
9,000.0	7,240.0	9,270.8	7,510.0	42.5	43.0	-140.84	-2,081.9	264.4	348.2	289.4	58.85	5.917	
9,100.0	7,240.0	9,370.8	7,510.0	44.3	44.8	-140.84	-2,181.9	264.7	348.2	286.9	61.33	5.678	
9,200.0	7,240.0	9,470.8	7,510.0	46.1	46.6	-140.83	-2,281.9	265.1	348.2	284.4	63.82	5.457	
9,300.0	7,240.0	9,570.8	7,510.0	48.0	48.4	-140.83	-2,381.9	265.5	348.2	281.9	66.32	5.251	
9,400.0	7,240.0	9,670.8	7,510.0	49.8	50.2	-140.83	-2,481.9	265.9	348.3	279.4	68.84	5.059	
9,500.0	7,240.0	9,770.8	7,510.0	51.6	52.0	-140.83	-2,581.9	266.3	348.3	276.9	71.38	4.879	
9,600.0	7,240.0	9,870.8	7,510.0	53.4	53.9	-140.83	-2,681.9	266.7	348.3	274.4	73.92	4.712	
9,700.0	7,240.0	9,970.8	7,510.0	55.3	55.7	-140.83	-2,781.9	267.0	348.3	271.8	76.47	4.554	
9,800.0	7,240.0	10,070.8	7,510.0	57.1	57.5	-140.83	-2,881.9	267.4	348.3	269.3	79.03	4.407	
9,900.0	7,240.0	10,170.8	7,510.0	59.0	59.4	-140.82	-2,981.9	267.8	348.3	266.7	81.60	4.268	
10,000.0	7,240.0	10,270.8	7,510.0	60.9	61.2	-140.82	-3,081.9	268.2	348.3	264.1	84.18	4.138	
10,100.0	7,240.0	10,370.8	7,510.0	62.7	63.1	-140.82	-3,181.9	268.6	348.3	261.5	86.76	4.015	
10,200.0	7,240.0	10,470.8	7,510.0	64.6	65.0	-140.82	-3,281.9	268.9	348.3	259.0	89.35	3.898	

CC - Min centre to center distance or convergent point, SF - min separation factor, ES - min ellipse separation

Company:	Synergy Resources	Local Co-ordinate Reference:	Well SRC Gies D-15-22NHZ
Project:	SEC.15-T7N-R65W	TVD Reference:	WELL @ 4851.0ft (RKB - 13')
Reference Site:	SRC Gies Pad Sec.15-T7N-R65W	MD Reference:	WELL @ 4851.0ft (RKB - 13')
Site Error:	0.0ft	North Reference:	True
Reference Well:	SRC Gies D-15-22NHZ	Survey Calculation Method:	Minimum Curvature
Well Error:	0.0ft	Output errors are at	2.00 sigma
Reference Wellbore	Wellbore #1	Database:	landmark
Reference Design:	Plan #1 (5-7-14)	Offset TVD Reference:	Offset Datum

Offset Design SRC Gies Pad Sec.15-T7N-R65W - SRC Gies 44-15-22CHZ - Wellbore #1 - Plan #1 (5-7-14)												Offset Site Error:	0.0 ft
Survey Program: 0-MWD												Offset Well Error:	0.0 ft
Reference		Offset		Semi Major Axis			Distance						
Measured Depth (ft)	Vertical Depth (ft)	Measured Depth (ft)	Vertical Depth (ft)	Reference (ft)	Offset (ft)	Highside Toolface (°)	Offset Wellbore Centre +N/-S (ft)	+E/-W (ft)	Between Centres (ft)	Between Ellipses (ft)	Minimum Separation (ft)	Separation Factor	Warning
10,300.0	7,240.0	10,570.8	7,510.0	66.5	66.8	-140.82	-3,381.9	269.3	348.3	256.4	91.95	3.788	
10,400.0	7,240.0	10,670.8	7,510.0	68.3	68.7	-140.82	-3,481.9	269.7	348.3	253.8	94.55	3.684	
10,500.0	7,240.0	10,770.8	7,510.0	70.2	70.6	-140.81	-3,581.9	270.1	348.3	251.2	97.15	3.585	
10,600.0	7,240.0	10,870.8	7,510.0	72.1	72.4	-140.81	-3,681.9	270.5	348.4	248.6	99.76	3.492	
10,700.0	7,240.0	10,970.8	7,510.0	74.0	74.3	-140.81	-3,781.9	270.9	348.4	246.0	102.38	3.403	
10,800.0	7,240.0	11,070.8	7,510.0	75.8	76.2	-140.81	-3,881.9	271.2	348.4	243.4	104.99	3.318	
10,900.0	7,240.0	11,170.8	7,510.0	77.7	78.1	-140.81	-3,981.9	271.6	348.4	240.8	107.62	3.237	
11,000.0	7,240.0	11,270.8	7,510.0	79.6	79.9	-140.81	-4,081.9	272.0	348.4	238.1	110.24	3.160	
11,100.0	7,240.0	11,370.8	7,510.0	81.5	81.8	-140.80	-4,181.9	272.4	348.4	235.5	112.87	3.087	
11,200.0	7,240.0	11,470.8	7,510.0	83.4	83.7	-140.80	-4,281.9	272.8	348.4	232.9	115.50	3.016	
11,300.0	7,240.0	11,570.8	7,510.0	85.3	85.6	-140.80	-4,381.9	273.2	348.4	230.3	118.13	2.949	
11,400.0	7,240.0	11,670.8	7,510.0	87.2	87.5	-140.80	-4,481.9	273.5	348.4	227.6	120.77	2.885	
11,434.8	7,240.0	11,705.7	7,510.0	87.7	88.2	-140.80	-4,516.7	273.7	348.4	226.8	121.57	2.866 SF	

Company:	Synergy Resources	Local Co-ordinate Reference:	Well SRC Gies D-15-22NHZ
Project:	SEC.15-T7N-R65W	TVD Reference:	WELL @ 4851.0ft (RKB - 13')
Reference Site:	SRC Gies Pad Sec.15-T7N-R65W	MD Reference:	WELL @ 4851.0ft (RKB - 13')
Site Error:	0.0ft	North Reference:	True
Reference Well:	SRC Gies D-15-22NHZ	Survey Calculation Method:	Minimum Curvature
Well Error:	0.0ft	Output errors are at	2.00 sigma
Reference Wellbore	Wellbore #1	Database:	landmark
Reference Design:	Plan #1 (5-7-14)	Offset TVD Reference:	Offset Datum

Offset Design													Offset Site Error:	0.0 ft
Survey Program: 0-MWD													Offset Well Error:	0.0 ft
Reference		Offset		Semi Major Axis			Distance							Warning
Measured Depth (ft)	Vertical Depth (ft)	Measured Depth (ft)	Vertical Depth (ft)	Reference (ft)	Offset (ft)	Highside Toolface (°)	Offset Wellbore Centre +N/-S (ft)	+E/-W (ft)	Between Centres (ft)	Between Ellipses (ft)	Minimum Separation (ft)	Separation Factor		
0.0	0.0	0.0	0.0	0.0	0.0	91.57	-1.1	40.0	40.0					
100.0	100.0	100.0	100.0	0.1	0.1	91.57	-1.1	40.0	40.0	39.8	0.22	178.064		
200.0	200.0	200.0	200.0	0.3	0.3	91.57	-1.1	40.0	40.0	39.3	0.67	59.355		
300.0	300.0	300.0	300.0	0.6	0.6	91.57	-1.1	40.0	40.0	38.9	1.12	35.613		
400.0	400.0	400.0	400.0	0.8	0.8	91.57	-1.1	40.0	40.0	38.4	1.57	25.438		
500.0	500.0	500.0	500.0	1.0	1.0	91.57	-1.1	40.0	40.0	38.0	2.02	19.785		
600.0	600.0	600.0	600.0	1.2	1.2	91.57	-1.1	40.0	40.0	37.6	2.47	16.188 CC, ES		
700.0	700.0	698.6	698.6	1.5	1.4	91.66	-1.2	41.7	41.7	38.8	2.91	14.366		
800.0	800.0	796.9	796.8	1.7	1.7	91.89	-1.5	46.8	46.9	43.6	3.33	14.062		
900.0	900.0	894.8	894.3	1.9	1.9	92.18	-2.1	55.1	55.5	51.7	3.78	14.674		
1,000.0	1,000.0	994.1	993.0	2.1	2.1	92.43	-2.8	65.6	66.1	61.8	4.24	15.570		
1,100.0	1,100.0	1,093.5	1,091.9	2.4	2.4	92.62	-3.5	76.2	76.7	72.0	4.72	16.255		
1,200.0	1,200.0	1,192.9	1,190.7	2.6	2.6	92.76	-4.2	86.7	87.3	82.1	5.20	16.790		
1,300.0	1,300.0	1,292.4	1,289.6	2.8	2.9	92.87	-4.9	97.3	97.9	92.2	5.69	17.217		
1,400.0	1,400.0	1,391.8	1,388.5	3.0	3.2	92.96	-5.6	107.8	108.5	102.4	6.18	17.564		
1,500.0	1,500.0	1,491.2	1,487.3	3.3	3.5	93.03	-6.3	118.3	119.2	112.5	6.68	17.851		
1,600.0	1,600.0	1,590.7	1,586.2	3.5	3.8	93.09	-7.0	128.9	129.8	122.6	7.17	18.092		
1,700.0	1,700.0	1,690.1	1,685.1	3.7	4.1	93.14	-7.7	139.4	140.4	132.7	7.67	18.297		
1,800.0	1,800.0	1,789.5	1,784.0	3.9	4.3	93.19	-8.4	149.9	151.0	142.9	8.18	18.473		
1,900.0	1,900.0	1,889.0	1,882.8	4.2	4.6	93.23	-9.0	160.5	161.7	153.0	8.68	18.625		
2,000.0	2,000.0	1,988.4	1,981.7	4.4	4.9	93.26	-9.7	171.0	172.3	163.1	9.18	18.759		
2,100.0	2,100.0	2,087.8	2,080.6	4.6	5.2	93.29	-10.4	181.6	182.9	173.2	9.69	18.877		
2,200.0	2,200.0	2,187.3	2,179.4	4.8	5.5	93.32	-11.1	192.1	193.5	183.3	10.20	18.982		
2,300.0	2,300.0	2,286.7	2,278.3	5.1	5.8	93.34	-11.8	202.6	204.1	193.4	10.70	19.075		
2,400.0	2,400.0	2,386.1	2,377.2	5.3	6.1	93.36	-12.5	213.2	214.8	203.6	11.21	19.160		
2,500.0	2,500.0	2,485.6	2,476.1	5.5	6.4	93.38	-13.2	223.7	225.4	213.7	11.72	19.236		
2,600.0	2,600.0	2,585.1	2,575.0	5.7	6.7	-20.66	-13.9	234.3	235.2	223.8	11.42	20.600		
2,700.0	2,700.0	2,684.8	2,674.1	5.9	7.0	-20.83	-14.6	244.8	243.4	231.5	11.84	20.559		
2,800.0	2,799.9	2,784.5	2,773.3	6.1	7.3	-21.14	-15.3	255.4	250.0	237.7	12.26	20.386		
2,900.0	2,899.7	2,884.4	2,872.6	6.3	7.6	-21.57	-16.0	266.0	255.0	242.3	12.69	20.102		
3,000.0	2,999.5	2,984.2	2,971.9	6.5	7.9	-22.03	-16.7	276.6	259.8	246.7	13.12	19.807		
3,100.0	3,099.3	3,084.1	3,071.2	6.7	8.2	-22.46	-17.4	287.2	264.6	251.1	13.55	19.527		
3,200.0	3,199.1	3,184.0	3,170.5	6.9	8.5	-22.87	-18.1	297.8	269.7	255.7	13.99	19.279		
3,300.0	3,299.0	3,283.7	3,269.7	7.1	8.8	-23.15	-18.8	308.3	276.3	261.9	14.43	19.144		
3,400.0	3,399.0	3,383.4	3,368.8	7.3	9.1	-23.28	-19.5	318.9	284.5	269.7	14.87	19.130		
3,500.0	3,499.0	3,482.9	3,467.7	7.5	9.4	-23.28	-20.2	329.4	294.3	279.0	15.29	19.244		
3,600.0	3,599.0	3,582.3	3,566.6	7.7	9.7	90.85	-20.9	340.0	304.9	289.2	15.73	19.387		
3,700.0	3,699.0	3,681.8	3,665.5	7.9	10.0	90.95	-21.6	350.5	315.5	299.4	16.18	19.497		
3,800.0	3,799.0	3,781.2	3,764.4	8.2	10.3	91.04	-22.3	361.1	326.2	309.5	16.64	19.600		
3,900.0	3,899.0	3,880.6	3,863.2	8.4	10.6	91.13	-23.0	371.6	336.8	319.7	17.10	19.698		
4,000.0	3,999.0	3,980.1	3,962.1	8.6	10.9	91.21	-23.7	382.1	347.4	329.8	17.55	19.790		
4,100.0	4,099.0	4,079.5	4,061.0	8.8	11.2	91.28	-24.4	392.7	358.0	340.0	18.01	19.878		
4,200.0	4,199.0	4,178.9	4,159.8	9.1	11.5	91.35	-25.1	403.2	368.6	350.1	18.47	19.961		
4,300.0	4,299.0	4,278.4	4,258.7	9.3	11.8	91.42	-25.8	413.8	379.2	360.3	18.92	20.040		
4,400.0	4,399.0	4,377.8	4,357.6	9.5	12.1	91.49	-26.5	424.3	389.8	370.4	19.38	20.115		
4,500.0	4,499.0	4,477.3	4,456.5	9.7	12.4	91.55	-27.1	434.8	400.4	380.6	19.84	20.186		
4,600.0	4,599.0	4,576.7	4,555.3	9.9	12.7	91.60	-27.8	445.4	411.1	390.8	20.29	20.254		
4,700.0	4,699.0	4,676.1	4,654.2	10.2	13.0	91.66	-28.5	455.9	421.7	400.9	20.75	20.319		
4,800.0	4,799.0	4,785.8	4,763.3	10.4	13.2	91.71	-29.3	466.7	431.6	410.4	21.21	20.345		
4,900.0	4,899.0	4,903.4	4,880.8	10.6	13.5	91.75	-29.7	474.0	437.8	416.2	21.65	20.221		
5,000.0	4,999.0	5,021.5	4,998.8	10.8	13.7	91.76	-29.9	476.5	439.9	417.8	22.08	19.923		
5,100.0	5,099.0	5,121.7	5,099.0	11.1	13.8	91.76	-29.9	476.5	439.9	417.4	22.50	19.555		

CC - Min centre to center distance or convergent point, SF - min separation factor, ES - min ellipse separation

Company:	Synergy Resources	Local Co-ordinate Reference:	Well SRC Gies D-15-22NHZ
Project:	SEC.15-T7N-R65W	TVD Reference:	WELL @ 4851.0ft (RKB - 13')
Reference Site:	SRC Gies Pad Sec.15-T7N-R65W	MD Reference:	WELL @ 4851.0ft (RKB - 13')
Site Error:	0.0ft	North Reference:	True
Reference Well:	SRC Gies D-15-22NHZ	Survey Calculation Method:	Minimum Curvature
Well Error:	0.0ft	Output errors are at	2.00 sigma
Reference Wellbore	Wellbore #1	Database:	landmark
Reference Design:	Plan #1 (5-7-14)	Offset TVD Reference:	Offset Datum

Offset Design												Offset Site Error:	0.0 ft
Survey Program: 0-MWD												Offset Well Error:	0.0 ft
Reference		Offset		Semi Major Axis			Distance						
Measured Depth (ft)	Vertical Depth (ft)	Measured Depth (ft)	Vertical Depth (ft)	Reference (ft)	Offset (ft)	Highside Toolface (°)	Offset Wellbore Centre +N/-S (ft)	+E/-W (ft)	Between Centres (ft)	Between Ellipses (ft)	Minimum Separation (ft)	Separation Factor	Warning
5,200.0	5,199.0	5,221.7	5,199.0	11.3	14.0	91.76	-29.9	476.5	439.9	417.0	22.92	19.197	
5,300.0	5,299.0	5,321.7	5,299.0	11.5	14.2	91.76	-29.9	476.5	439.9	416.6	23.34	18.852	
5,400.0	5,399.0	5,421.7	5,399.0	11.7	14.3	91.76	-29.9	476.5	439.9	416.2	23.76	18.518	
5,500.0	5,499.0	5,521.7	5,499.0	12.0	14.5	91.76	-29.9	476.5	439.9	415.7	24.18	18.195	
5,600.0	5,599.0	5,621.7	5,599.0	12.2	14.7	91.76	-29.9	476.5	439.9	415.3	24.60	17.882	
5,700.0	5,699.0	5,721.7	5,699.0	12.4	14.9	91.76	-29.9	476.5	439.9	414.9	25.02	17.580	
5,800.0	5,799.0	5,821.7	5,799.0	12.6	15.0	91.76	-29.9	476.5	439.9	414.5	25.45	17.286	
5,900.0	5,899.0	5,921.7	5,899.0	12.8	15.2	91.76	-29.9	476.5	439.9	414.0	25.87	17.002	
6,000.0	5,999.0	6,021.7	5,999.0	13.1	15.4	91.76	-29.9	476.5	439.9	413.6	26.30	16.727	
6,100.0	6,099.0	6,121.7	6,099.0	13.3	15.6	91.76	-29.9	476.5	439.9	413.2	26.73	16.460	
6,200.0	6,199.0	6,221.7	6,199.0	13.5	15.7	91.76	-29.9	476.5	439.9	412.8	27.15	16.201	
6,300.0	6,299.0	6,321.7	6,299.0	13.7	15.9	91.76	-29.9	476.5	439.9	412.3	27.58	15.949	
6,400.0	6,399.0	6,421.7	6,399.0	14.0	16.1	91.76	-29.9	476.5	439.9	411.9	28.01	15.705	
6,500.0	6,499.0	6,521.7	6,499.0	14.2	16.3	91.76	-29.9	476.5	439.9	411.5	28.44	15.468	
6,600.0	6,598.8	6,620.1	6,597.3	14.4	16.5	-88.04	-33.7	476.5	439.9	411.1	28.83	15.259	
6,700.0	6,697.2	6,718.1	6,693.7	14.6	16.6	-88.09	-50.3	476.6	439.9	410.7	29.20	15.063	
6,800.0	6,792.2	6,816.1	6,787.1	14.8	16.9	-88.17	-80.0	476.7	439.9	410.3	29.61	14.854	
6,900.0	6,882.0	6,914.2	6,875.6	15.0	17.1	-88.29	-122.2	476.9	439.9	409.8	30.11	14.609	
7,000.0	6,964.9	7,012.5	6,957.6	15.3	17.4	-88.44	-176.2	477.1	439.8	409.1	30.75	14.303	
7,100.0	7,039.1	7,110.9	7,031.6	15.7	17.7	-88.62	-241.0	477.3	439.8	408.2	31.61	13.913	
7,200.0	7,103.3	7,209.6	7,096.1	16.3	18.2	-88.83	-315.5	477.6	439.8	407.0	32.74	13.431	
7,300.0	7,156.2	7,308.4	7,149.9	17.0	18.8	-89.06	-398.3	477.9	439.8	405.6	34.19	12.863	
7,400.0	7,196.9	7,407.5	7,191.9	17.8	19.6	-89.31	-488.0	478.3	439.8	403.8	35.96	12.230	
7,500.0	7,224.4	7,506.9	7,221.2	18.9	20.6	-89.57	-582.9	478.6	439.8	401.7	38.03	11.563	
7,503.7	7,225.1	7,510.6	7,222.0	18.9	20.6	-89.58	-586.5	478.7	439.8	401.6	38.12	11.537	
7,600.0	7,238.3	7,606.6	7,237.1	20.0	21.6	-89.84	-681.2	479.0	439.8	399.4	40.37	10.894	
7,700.0	7,240.0	7,706.5	7,240.0	21.3	22.8	-90.00	-781.1	479.4	439.8	396.9	42.90	10.250	
7,800.0	7,240.0	7,806.5	7,240.0	22.7	24.1	-90.00	-881.1	479.8	439.8	394.2	45.62	9.640	
7,900.0	7,240.0	7,906.5	7,240.0	24.1	25.5	-90.00	-981.1	480.2	439.8	391.3	48.49	9.069	
8,000.0	7,240.0	8,006.5	7,240.0	25.6	26.9	-90.00	-1,081.1	480.6	439.8	388.3	51.49	8.541	
8,100.0	7,240.0	8,106.5	7,240.0	27.2	28.4	-90.00	-1,181.1	480.9	439.8	385.2	54.60	8.055	
8,200.0	7,240.0	8,206.5	7,240.0	28.8	30.0	-90.00	-1,281.1	481.3	439.8	382.1	57.80	7.610	
8,300.0	7,240.0	8,306.5	7,240.0	30.4	31.6	-90.00	-1,381.1	481.7	439.9	378.8	61.07	7.203	
8,400.0	7,240.0	8,406.5	7,240.0	32.1	33.2	-90.00	-1,481.1	482.1	439.9	375.5	64.41	6.830	
8,500.0	7,240.0	8,506.5	7,240.0	33.8	34.8	-90.00	-1,581.1	482.5	439.9	372.1	67.80	6.489	
8,600.0	7,240.0	8,606.5	7,240.0	35.5	36.5	-90.00	-1,681.1	482.9	439.9	368.7	71.23	6.176	
8,700.0	7,240.0	8,706.5	7,240.0	37.2	38.2	-90.00	-1,781.1	483.3	439.9	365.2	74.71	5.888	
8,800.0	7,240.0	8,806.5	7,240.0	39.0	39.9	-90.00	-1,881.1	483.6	439.9	361.7	78.22	5.624	
8,900.0	7,240.0	8,906.5	7,240.0	40.7	41.7	-90.00	-1,981.1	484.0	440.0	358.2	81.77	5.381	
9,000.0	7,240.0	9,006.5	7,240.0	42.5	43.4	-90.00	-2,081.1	484.4	440.0	354.6	85.34	5.156	
9,100.0	7,240.0	9,106.5	7,240.0	44.3	45.2	-90.00	-2,181.1	484.8	440.0	351.1	88.93	4.948	
9,200.0	7,240.0	9,206.5	7,240.0	46.1	47.0	-90.00	-2,281.1	485.2	440.0	347.5	92.54	4.755	
9,300.0	7,240.0	9,306.5	7,240.0	48.0	48.8	-90.00	-2,381.1	485.6	440.0	343.8	96.17	4.575	
9,400.0	7,240.0	9,406.5	7,240.0	49.8	50.6	-90.00	-2,481.1	486.0	440.0	340.2	99.82	4.408	
9,500.0	7,240.0	9,506.5	7,240.0	51.6	52.4	-90.00	-2,581.1	486.3	440.1	336.6	103.49	4.252	
9,600.0	7,240.0	9,606.5	7,240.0	53.4	54.2	-90.00	-2,681.0	486.7	440.1	332.9	107.16	4.107	
9,700.0	7,240.0	9,706.5	7,240.0	55.3	56.0	-90.00	-2,781.0	487.1	440.1	329.2	110.85	3.970	
9,800.0	7,240.0	9,806.5	7,240.0	57.1	57.9	-90.00	-2,881.0	487.5	440.1	325.5	114.55	3.842	
9,900.0	7,240.0	9,906.5	7,240.0	59.0	59.7	-90.00	-2,981.0	487.9	440.1	321.9	118.26	3.722	
10,000.0	7,240.0	10,006.5	7,240.0	60.9	61.6	-90.00	-3,081.0	488.3	440.1	318.2	121.97	3.608	
10,100.0	7,240.0	10,106.5	7,240.0	62.7	63.4	-90.00	-3,181.0	488.7	440.1	314.4	125.70	3.502	
10,200.0	7,240.0	10,206.5	7,240.0	64.6	65.3	-90.00	-3,281.0	489.0	440.2	310.7	129.43	3.401	

CC - Min centre to center distance or convergent point, SF - min separation factor, ES - min ellipse separation

Company:	Synergy Resources	Local Co-ordinate Reference:	Well SRC Gies D-15-22NHZ
Project:	SEC.15-T7N-R65W	TVD Reference:	WELL @ 4851.0ft (RKB - 13')
Reference Site:	SRC Gies Pad Sec.15-T7N-R65W	MD Reference:	WELL @ 4851.0ft (RKB - 13')
Site Error:	0.0ft	North Reference:	True
Reference Well:	SRC Gies D-15-22NHZ	Survey Calculation Method:	Minimum Curvature
Well Error:	0.0ft	Output errors are at	2.00 sigma
Reference Wellbore	Wellbore #1	Database:	landmark
Reference Design:	Plan #1 (5-7-14)	Offset TVD Reference:	Offset Datum

Offset Design SRC Gies Pad Sec.15-T7N-R65W - SRC Gies 44-15-22NHZ - Wellbore #1 - Plan #1 (5-7-14)												Offset Site Error:	0.0 ft
Survey Program: 0-MWD												Offset Well Error:	0.0 ft
Reference		Offset		Semi Major Axis			Distance						
Measured Depth (ft)	Vertical Depth (ft)	Measured Depth (ft)	Vertical Depth (ft)	Reference (ft)	Offset (ft)	Highside Toolface (°)	Offset Wellbore Centre +N/-S (ft)	+E/-W (ft)	Between Centres (ft)	Between Ellipses (ft)	Minimum Separation (ft)	Separation Factor	Warning
10,300.0	7,240.0	10,306.5	7,240.0	66.5	67.1	-90.00	-3,381.0	489.4	440.2	307.0	133.17	3.305	
10,400.0	7,240.0	10,406.5	7,240.0	68.3	69.0	-90.00	-3,481.0	489.8	440.2	303.3	136.92	3.215	
10,500.0	7,240.0	10,506.5	7,240.0	70.2	70.8	-90.00	-3,581.0	490.2	440.2	299.5	140.67	3.129	
10,600.0	7,240.0	10,606.5	7,240.0	72.1	72.7	-90.00	-3,681.0	490.6	440.2	295.8	144.42	3.048	
10,700.0	7,240.0	10,706.5	7,240.0	74.0	74.6	-90.00	-3,781.0	491.0	440.2	292.1	148.18	2.971	
10,800.0	7,240.0	10,806.5	7,240.0	75.8	76.5	-90.00	-3,881.0	491.4	440.3	288.3	151.95	2.897	
10,900.0	7,240.0	10,906.5	7,240.0	77.7	78.3	-90.00	-3,981.0	491.7	440.3	284.5	155.72	2.827	
11,000.0	7,240.0	11,006.5	7,240.0	79.6	80.2	-90.00	-4,081.0	492.1	440.3	280.8	159.49	2.761	
11,100.0	7,240.0	11,106.5	7,240.0	81.5	82.1	-90.00	-4,181.0	492.5	440.3	277.0	163.27	2.697	
11,200.0	7,240.0	11,206.5	7,240.0	83.4	84.0	-90.00	-4,281.0	492.9	440.3	273.3	167.05	2.636	
11,300.0	7,240.0	11,306.5	7,240.0	85.3	85.9	-90.00	-4,381.0	493.3	440.3	269.5	170.83	2.578	
11,400.0	7,240.0	11,406.5	7,240.0	87.2	87.7	-90.00	-4,481.0	493.7	440.3	265.7	174.62	2.522	
11,434.8	7,240.0	11,441.4	7,240.0	87.7	88.4	-90.00	-4,515.9	493.8	440.4	264.5	175.82	2.505 SF	

Company:	Synergy Resources	Local Co-ordinate Reference:	Well SRC Gies D-15-22NHZ
Project:	SEC.15-T7N-R65W	TVD Reference:	WELL @ 4851.0ft (RKB - 13')
Reference Site:	SRC Gies Pad Sec.15-T7N-R65W	MD Reference:	WELL @ 4851.0ft (RKB - 13')
Site Error:	0.0ft	North Reference:	True
Reference Well:	SRC Gies D-15-22NHZ	Survey Calculation Method:	Minimum Curvature
Well Error:	0.0ft	Output errors are at	2.00 sigma
Reference Wellbore	Wellbore #1	Database:	landmark
Reference Design:	Plan #1 (5-7-14)	Offset TVD Reference:	Offset Datum

Offset Design												Offset Site Error:	0.0 ft
Survey Program: 0-MWD												Offset Well Error:	0.0 ft
Reference		Offset		Semi Major Axis			Distance						
Measured Depth (ft)	Vertical Depth (ft)	Measured Depth (ft)	Vertical Depth (ft)	Reference (ft)	Offset (ft)	Highside Toolface (°)	Offset Wellbore Centre +N/-S (ft)	+E/-W (ft)	Between Centres (ft)	Between Ellipses (ft)	Minimum Separation (ft)	Separation Factor	Warning
0.0	0.0	0.0	0.0	0.0	0.0	-88.94	0.4	-19.7	19.7	19.7	0.00	N/A	
100.0	100.0	100.0	100.0	0.1	0.1	-88.94	0.4	-19.7	19.7	19.5	0.22	87.777	
200.0	200.0	200.0	200.0	0.3	0.3	-88.94	0.4	-19.7	19.7	19.1	0.67	29.259	
300.0	300.0	300.0	300.0	0.6	0.6	-88.94	0.4	-19.7	19.7	18.6	1.12	17.555	
400.0	400.0	400.0	400.0	0.8	0.8	-88.94	0.4	-19.7	19.7	18.2	1.57	12.540	
500.0	500.0	500.0	500.0	1.0	1.0	-88.94	0.4	-19.7	19.7	17.7	2.02	9.753	
600.0	600.0	600.0	600.0	1.2	1.2	-88.94	0.4	-19.7	19.7	17.3	2.47	7.980	
700.0	700.0	700.0	700.0	1.5	1.5	-88.94	0.4	-19.7	19.7	16.8	2.92	6.752	
800.0	800.0	800.0	800.0	1.7	1.7	-88.94	0.4	-19.7	19.7	16.4	3.37	5.852	
900.0	900.0	900.0	900.0	1.9	1.9	-88.94	0.4	-19.7	19.7	15.9	3.82	5.163	
1,000.0	1,000.0	1,000.0	1,000.0	2.1	2.1	-88.94	0.4	-19.7	19.7	15.5	4.27	4.620	
1,100.0	1,100.0	1,100.0	1,100.0	2.4	2.4	-88.94	0.4	-19.7	19.7	15.0	4.72	4.180	
1,200.0	1,200.0	1,200.0	1,200.0	2.6	2.6	-88.94	0.4	-19.7	19.7	14.6	5.17	3.816	
1,300.0	1,300.0	1,300.0	1,300.0	2.8	2.8	-88.94	0.4	-19.7	19.7	14.1	5.62	3.511	
1,400.0	1,400.0	1,400.0	1,400.0	3.0	3.0	-88.94	0.4	-19.7	19.7	13.7	6.07	3.251 CC, ES	
1,500.0	1,500.0	1,499.3	1,499.3	3.3	3.2	-89.30	0.3	-21.4	21.5	15.0	6.50	3.300	
1,600.0	1,600.0	1,598.4	1,598.2	3.5	3.4	-90.10	0.0	-26.6	26.6	19.7	6.93	3.845	
1,700.0	1,700.0	1,698.1	1,697.7	3.7	3.7	-90.78	-0.5	-33.3	33.4	26.1	7.36	4.541	
1,800.0	1,800.0	1,797.9	1,797.3	3.9	3.9	-91.22	-0.9	-40.1	40.2	32.4	7.80	5.156	
1,900.0	1,900.0	1,897.7	1,896.8	4.2	4.1	-91.54	-1.3	-46.9	47.0	38.8	8.24	5.703	
2,000.0	2,000.0	1,997.4	1,996.3	4.4	4.3	-91.78	-1.7	-53.7	53.8	45.1	8.69	6.191	
2,100.0	2,100.0	2,097.2	2,095.9	4.6	4.5	-91.97	-2.1	-60.4	60.6	51.5	9.14	6.628	
2,200.0	2,200.0	2,197.0	2,195.4	4.8	4.8	-92.11	-2.5	-67.2	67.4	57.8	9.60	7.023	
2,300.0	2,300.0	2,296.7	2,295.0	5.1	5.0	-92.23	-2.9	-74.0	74.2	64.1	10.06	7.379	
2,400.0	2,400.0	2,396.5	2,394.5	5.3	5.3	-92.33	-3.3	-80.7	81.0	70.5	10.51	7.704	
2,500.0	2,500.0	2,496.3	2,494.0	5.5	5.5	-92.42	-3.7	-87.5	87.8	76.8	10.98	7.999	
2,600.0	2,600.0	2,596.0	2,593.5	5.7	5.7	-153.69	-4.1	-94.3	95.4	84.1	11.25	8.477	
2,700.0	2,700.0	2,695.6	2,692.9	5.9	6.0	-154.21	-4.5	-101.0	104.5	92.9	11.65	8.972	
2,800.0	2,799.9	2,795.0	2,792.0	6.1	6.2	-155.01	-4.9	-107.8	115.2	103.2	12.05	9.565	
2,900.0	2,899.7	2,894.2	2,891.0	6.3	6.5	-155.98	-5.3	-114.5	127.4	115.0	12.45	10.235	
3,000.0	2,999.5	2,993.4	2,990.0	6.5	6.7	-156.86	-5.7	-121.3	140.0	127.1	12.86	10.880	
3,100.0	3,099.3	3,092.6	3,089.0	6.7	6.9	-157.59	-6.1	-128.0	152.5	139.2	13.28	11.485	
3,200.0	3,199.1	3,191.8	3,188.0	6.9	7.2	-158.20	-6.5	-134.7	164.8	151.1	13.71	12.022	
3,300.0	3,299.0	3,291.2	3,287.1	7.1	7.4	-158.55	-6.9	-141.5	175.6	161.5	14.15	12.414	
3,400.0	3,399.0	3,390.8	3,386.5	7.3	7.7	-158.66	-7.3	-148.2	184.8	170.3	14.58	12.673	
3,500.0	3,499.0	3,490.5	3,486.0	7.5	7.9	-158.57	-7.7	-155.0	192.4	177.4	15.01	12.823	
3,600.0	3,599.0	3,590.3	3,585.5	7.7	8.2	-87.62	-8.1	-161.8	199.2	183.8	15.43	12.907	
3,700.0	3,699.0	3,690.0	3,685.0	7.9	8.4	-87.81	-8.5	-168.5	206.0	190.1	15.88	12.970	
3,800.0	3,799.0	3,789.8	3,784.6	8.2	8.7	-87.99	-9.0	-175.3	212.7	196.4	16.33	13.030	
3,900.0	3,899.0	3,896.1	3,890.7	8.4	8.9	-88.14	-9.3	-181.2	218.3	201.5	16.77	13.018	
4,000.0	3,999.0	4,004.3	3,998.9	8.6	9.1	-88.19	-9.4	-183.3	220.2	203.0	17.20	12.807	
4,100.0	4,099.0	4,104.4	4,099.0	8.8	9.3	-88.19	-9.4	-183.3	220.2	202.6	17.62	12.498	
4,200.0	4,199.0	4,204.4	4,199.0	9.1	9.5	-88.19	-9.4	-183.3	220.2	202.2	18.05	12.198	
4,300.0	4,299.0	4,304.4	4,299.0	9.3	9.7	-88.19	-9.4	-183.3	220.2	201.7	18.49	11.912	
4,400.0	4,399.0	4,404.4	4,399.0	9.5	9.9	-88.19	-9.4	-183.3	220.2	201.3	18.92	11.638	
4,500.0	4,499.0	4,504.4	4,499.0	9.7	10.1	-88.19	-9.4	-183.3	220.2	200.9	19.36	11.376	
4,600.0	4,599.0	4,604.4	4,599.0	9.9	10.3	-88.19	-9.4	-183.3	220.2	200.4	19.80	11.125	
4,700.0	4,699.0	4,704.4	4,699.0	10.2	10.6	-88.19	-9.4	-183.3	220.2	200.0	20.23	10.885	
4,800.0	4,799.0	4,804.4	4,799.0	10.4	10.8	-88.19	-9.4	-183.3	220.2	199.6	20.67	10.655	
4,900.0	4,899.0	4,904.4	4,899.0	10.6	11.0	-88.19	-9.4	-183.3	220.2	199.1	21.11	10.434	
5,000.0	4,999.0	5,004.4	4,999.0	10.8	11.2	-88.19	-9.4	-183.3	220.2	198.7	21.55	10.221	
5,100.0	5,099.0	5,104.4	5,099.0	11.1	11.4	-88.19	-9.4	-183.3	220.2	198.3	21.99	10.017	

CC - Min centre to center distance or convergent point, SF - min separation factor, ES - min ellipse separation

Company:	Synergy Resources	Local Co-ordinate Reference:	Well SRC Gies D-15-22NHZ
Project:	SEC.15-T7N-R65W	TVD Reference:	WELL @ 4851.0ft (RKB - 13')
Reference Site:	SRC Gies Pad Sec.15-T7N-R65W	MD Reference:	WELL @ 4851.0ft (RKB - 13')
Site Error:	0.0ft	North Reference:	True
Reference Well:	SRC Gies D-15-22NHZ	Survey Calculation Method:	Minimum Curvature
Well Error:	0.0ft	Output errors are at	2.00 sigma
Reference Wellbore	Wellbore #1	Database:	landmark
Reference Design:	Plan #1 (5-7-14)	Offset TVD Reference:	Offset Datum

Offset Design												Offset Site Error:	0.0 ft
Survey Program: 0-MWD												Offset Well Error:	0.0 ft
Reference		Offset		Semi Major Axis			Distance						
Measured Depth (ft)	Vertical Depth (ft)	Measured Depth (ft)	Vertical Depth (ft)	Reference (ft)	Offset (ft)	Highside Toolface (°)	Offset Wellbore Centre +N/-S (ft)	+E/-W (ft)	Between Centres (ft)	Between Ellipses (ft)	Minimum Separation (ft)	Separation Factor	Warning
5,200.0	5,199.0	5,204.4	5,199.0	11.3	11.6	-88.19	-9.4	-183.3	220.2	197.8	22.42	9.821	
5,300.0	5,299.0	5,304.4	5,299.0	11.5	11.8	-88.19	-9.4	-183.3	220.2	197.4	22.86	9.632	
5,400.0	5,399.0	5,404.4	5,399.0	11.7	12.0	-88.19	-9.4	-183.3	220.2	196.9	23.30	9.450	
5,500.0	5,499.0	5,504.4	5,499.0	12.0	12.2	-88.19	-9.4	-183.3	220.2	196.5	23.74	9.275	
5,600.0	5,599.0	5,604.4	5,599.0	12.2	12.4	-88.19	-9.4	-183.3	220.2	196.1	24.19	9.106	
5,700.0	5,699.0	5,704.4	5,699.0	12.4	12.7	-88.19	-9.4	-183.3	220.2	195.6	24.63	8.943	
5,800.0	5,799.0	5,804.4	5,799.0	12.6	12.9	-88.19	-9.4	-183.3	220.2	195.2	25.07	8.786	
5,900.0	5,899.0	5,904.4	5,899.0	12.8	13.1	-88.19	-9.4	-183.3	220.2	194.7	25.51	8.633	
6,000.0	5,999.0	6,004.4	5,999.0	13.1	13.3	-88.19	-9.4	-183.3	220.2	194.3	25.95	8.486	
6,100.0	6,099.0	6,104.4	6,099.0	13.3	13.5	-88.19	-9.4	-183.3	220.2	193.8	26.39	8.344	
6,200.0	6,199.0	6,204.4	6,199.0	13.5	13.7	-88.19	-9.4	-183.3	220.2	193.4	26.84	8.207	
6,300.0	6,299.0	6,304.4	6,299.0	13.7	13.9	-88.19	-9.4	-183.3	220.2	193.0	27.28	8.074	
6,400.0	6,399.0	6,404.4	6,399.0	14.0	14.1	-88.19	-9.4	-183.3	220.2	192.5	27.72	7.945	
6,500.0	6,499.0	6,504.4	6,499.0	14.2	14.4	-88.19	-9.4	-183.3	220.2	192.1	28.16	7.820	
6,505.3	6,504.3	6,509.7	6,504.3	14.2	14.4	92.03	-9.4	-183.3	220.2	192.1	28.19	7.814	
6,600.0	6,598.8	6,604.3	6,598.8	14.4	14.6	93.03	-9.4	-183.3	220.4	191.8	28.58	7.713	
6,700.0	6,697.2	6,702.7	6,697.2	14.6	14.8	97.31	-9.4	-183.3	222.0	193.1	28.96	7.667	
6,800.0	6,792.2	6,797.7	6,792.2	14.8	15.0	104.18	-9.4	-183.3	228.1	198.9	29.27	7.793	
6,900.0	6,882.0	6,901.7	6,886.0	15.0	15.2	112.35	-16.8	-183.3	240.7	211.3	29.38	8.193	
7,000.0	6,964.9	7,012.8	7,004.3	15.3	15.4	119.63	-41.1	-183.2	257.7	228.5	29.21	8.820	
7,100.0	7,039.1	7,131.9	7,114.6	15.7	15.7	125.85	-85.3	-183.0	277.2	248.4	28.79	9.630	
7,200.0	7,103.3	7,259.8	7,223.3	16.3	16.0	130.97	-152.5	-182.8	297.4	269.2	28.21	10.543	
7,300.0	7,156.2	7,397.1	7,324.6	17.0	16.5	135.02	-244.8	-182.4	316.3	288.6	27.67	11.430	
7,400.0	7,196.9	7,543.5	7,411.2	17.8	17.4	138.01	-362.6	-182.0	332.0	304.6	27.43	12.105	
7,500.0	7,224.4	7,697.7	7,474.5	18.9	18.6	139.93	-502.8	-181.4	343.0	315.3	27.74	12.367	
7,600.0	7,238.3	7,856.8	7,506.8	20.0	20.3	140.79	-658.3	-180.9	348.1	319.3	28.82	12.080	
7,700.0	7,240.0	7,982.2	7,510.0	21.3	21.9	140.82	-783.6	-180.4	348.3	317.8	30.48	11.426	
7,800.0	7,240.0	8,082.2	7,510.0	22.7	23.2	140.83	-883.6	-180.0	348.3	316.0	32.27	10.794	
7,900.0	7,240.0	8,182.2	7,510.0	24.1	24.6	140.83	-983.6	-179.6	348.3	314.1	34.17	10.193	
8,000.0	7,240.0	8,282.2	7,510.0	25.6	26.1	140.83	-1,083.6	-179.2	348.3	312.1	36.17	9.629	
8,100.0	7,240.0	8,382.2	7,510.0	27.2	27.7	140.83	-1,183.6	-178.9	348.3	310.0	38.25	9.104	
8,200.0	7,240.0	8,482.2	7,510.0	28.8	29.2	140.83	-1,283.6	-178.5	348.3	307.8	40.41	8.618	
8,300.0	7,240.0	8,582.2	7,510.0	30.4	30.9	140.83	-1,383.6	-178.1	348.2	305.6	42.63	8.170	
8,400.0	7,240.0	8,682.2	7,510.0	32.1	32.5	140.83	-1,483.6	-177.7	348.2	303.3	44.89	7.757	
8,500.0	7,240.0	8,782.2	7,510.0	33.8	34.2	140.84	-1,583.6	-177.3	348.2	301.0	47.20	7.377	
8,600.0	7,240.0	8,882.2	7,510.0	35.5	35.9	140.84	-1,683.6	-176.9	348.2	298.7	49.55	7.027	
8,700.0	7,240.0	8,982.2	7,510.0	37.2	37.6	140.84	-1,783.6	-176.6	348.2	296.3	51.93	6.705	
8,800.0	7,240.0	9,082.2	7,510.0	39.0	39.4	140.84	-1,883.6	-176.2	348.2	293.9	54.34	6.408	
8,900.0	7,240.0	9,182.2	7,510.0	40.7	41.1	140.84	-1,983.6	-175.8	348.2	291.4	56.78	6.133	
9,000.0	7,240.0	9,282.2	7,510.0	42.5	42.9	140.84	-2,083.6	-175.4	348.2	289.0	59.23	5.878	
9,100.0	7,240.0	9,382.2	7,510.0	44.3	44.7	140.84	-2,183.6	-175.0	348.2	286.5	61.71	5.643	
9,200.0	7,240.0	9,482.2	7,510.0	46.1	46.5	140.85	-2,283.6	-174.7	348.2	284.0	64.20	5.423	
9,300.0	7,240.0	9,582.2	7,510.0	48.0	48.3	140.85	-2,383.6	-174.3	348.2	281.5	66.71	5.220	
9,400.0	7,240.0	9,682.2	7,510.0	49.8	50.1	140.85	-2,483.6	-173.9	348.2	278.9	69.23	5.029	
9,500.0	7,240.0	9,782.2	7,510.0	51.6	51.9	140.85	-2,583.6	-173.5	348.2	276.4	71.76	4.852	
9,600.0	7,240.0	9,882.2	7,510.0	53.4	53.8	140.85	-2,683.6	-173.1	348.2	273.9	74.30	4.686	
9,700.0	7,240.0	9,982.2	7,510.0	55.3	55.6	140.85	-2,783.6	-172.8	348.2	271.3	76.85	4.530	
9,800.0	7,240.0	10,082.2	7,510.0	57.1	57.5	140.85	-2,883.6	-172.4	348.1	268.7	79.41	4.384	
9,900.0	7,240.0	10,182.2	7,510.0	59.0	59.3	140.85	-2,983.6	-172.0	348.1	266.2	81.98	4.247	
10,000.0	7,240.0	10,282.2	7,510.0	60.9	61.2	140.86	-3,083.6	-171.6	348.1	263.6	84.56	4.117	
10,100.0	7,240.0	10,382.2	7,510.0	62.7	63.0	140.86	-3,183.6	-171.2	348.1	261.0	87.14	3.995	
10,200.0	7,240.0	10,482.2	7,510.0	64.6	64.9	140.86	-3,283.6	-170.9	348.1	258.4	89.72	3.880	

CC - Min centre to center distance or convergent point, SF - min separation factor, ES - min ellipse separation

Company:	Synergy Resources	Local Co-ordinate Reference:	Well SRC Gies D-15-22NHZ
Project:	SEC.15-T7N-R65W	TVD Reference:	WELL @ 4851.0ft (RKB - 13')
Reference Site:	SRC Gies Pad Sec.15-T7N-R65W	MD Reference:	WELL @ 4851.0ft (RKB - 13')
Site Error:	0.0ft	North Reference:	True
Reference Well:	SRC Gies D-15-22NHZ	Survey Calculation Method:	Minimum Curvature
Well Error:	0.0ft	Output errors are at	2.00 sigma
Reference Wellbore	Wellbore #1	Database:	landmark
Reference Design:	Plan #1 (5-7-14)	Offset TVD Reference:	Offset Datum

Offset Design SRC Gies Pad Sec.15-T7N-R65W - SRC Gies D-15-22CHZ - Wellbore #1 - Plan #1 (5-7-14)												Offset Site Error:	0.0 ft
Survey Program: 0-MWD												Offset Well Error:	0.0 ft
Reference	Offset	Semi Major Axis		Distance									
Measured Depth (ft)	Vertical Depth (ft)	Measured Depth (ft)	Vertical Depth (ft)	Reference (ft)	Offset (ft)	Highside Toolface (°)	Offset Wellbore Centre +N/-S (ft)	+E/-W (ft)	Between Centres (ft)	Between Ellipses (ft)	Minimum Separation (ft)	Separation Factor	Warning
10,300.0	7,240.0	10,582.2	7,510.0	66.5	66.7	140.86	-3,383.6	-170.5	348.1	255.8	92.32	3.771	
10,400.0	7,240.0	10,682.2	7,510.0	68.3	68.6	140.86	-3,483.6	-170.1	348.1	253.2	94.92	3.668	
10,500.0	7,240.0	10,782.2	7,510.0	70.2	70.5	140.86	-3,583.6	-169.7	348.1	250.6	97.52	3.570	
10,600.0	7,240.0	10,882.2	7,510.0	72.1	72.4	140.86	-3,683.6	-169.3	348.1	248.0	100.12	3.477	
10,700.0	7,240.0	10,982.2	7,510.0	74.0	74.2	140.87	-3,783.6	-169.0	348.1	245.4	102.73	3.388	
10,800.0	7,240.0	11,082.2	7,510.0	75.8	76.1	140.87	-3,883.6	-168.6	348.1	242.7	105.35	3.304	
10,900.0	7,240.0	11,182.2	7,510.0	77.7	78.0	140.87	-3,983.6	-168.2	348.1	240.1	107.97	3.224	
11,000.0	7,240.0	11,282.2	7,510.0	79.6	79.9	140.87	-4,083.6	-167.8	348.1	237.5	110.59	3.147	
11,100.0	7,240.0	11,382.2	7,510.0	81.5	81.8	140.87	-4,183.6	-167.4	348.1	234.9	113.21	3.075	
11,200.0	7,240.0	11,482.2	7,510.0	83.4	83.7	140.87	-4,283.6	-167.0	348.1	232.2	115.83	3.005	
11,300.0	7,240.0	11,582.2	7,510.0	85.3	85.5	140.87	-4,383.6	-166.7	348.0	229.6	118.46	2.938	
11,400.0	7,240.0	11,682.2	7,510.0	87.2	87.4	140.88	-4,483.6	-166.3	348.0	226.9	121.09	2.874	
11,427.8	7,240.0	11,710.0	7,510.0	87.6	88.0	140.88	-4,511.4	-166.2	348.0	226.3	121.73	2.859	
11,434.8	7,240.0	11,715.1	7,510.0	87.7	88.1	140.88	-4,516.5	-166.2	348.0	226.2	121.87	2.856 SF	

Company:	Synergy Resources	Local Co-ordinate Reference:	Well SRC Gies D-15-22NHZ
Project:	SEC.15-T7N-R65W	TVD Reference:	WELL @ 4851.0ft (RKB - 13')
Reference Site:	SRC Gies Pad Sec.15-T7N-R65W	MD Reference:	WELL @ 4851.0ft (RKB - 13')
Site Error:	0.0ft	North Reference:	True
Reference Well:	SRC Gies D-15-22NHZ	Survey Calculation Method:	Minimum Curvature
Well Error:	0.0ft	Output errors are at	2.00 sigma
Reference Wellbore	Wellbore #1	Database:	landmark
Reference Design:	Plan #1 (5-7-14)	Offset TVD Reference:	Offset Datum

Offset Design													Offset Site Error:	0.0 ft
Survey Program: 0-MWD													Offset Well Error:	0.0 ft
Reference		Offset		Semi Major Axis			Distance							Warning
Measured Depth (ft)	Vertical Depth (ft)	Measured Depth (ft)	Vertical Depth (ft)	Reference (ft)	Offset (ft)	Highside Toolface (°)	Offset Wellbore Centre +N/-S (ft)	+E/-W (ft)	Between Centres (ft)	Between Ellipses (ft)	Minimum Separation (ft)	Separation Factor		
0.0	0.0	0.0	0.0	0.0	0.0	-88.25	1.8	-59.7	59.8					
100.0	100.0	100.0	100.0	0.1	0.1	-88.25	1.8	-59.7	59.8	59.5	0.22	265.883		
200.0	200.0	200.0	200.0	0.3	0.3	-88.25	1.8	-59.7	59.8	59.1	0.67	88.628		
300.0	300.0	300.0	300.0	0.6	0.6	-88.25	1.8	-59.7	59.8	58.6	1.12	53.177		
400.0	400.0	400.0	400.0	0.8	0.8	-88.25	1.8	-59.7	59.8	58.2	1.57	37.983		
500.0	500.0	500.0	500.0	1.0	1.0	-88.25	1.8	-59.7	59.8	57.7	2.02	29.543		
600.0	600.0	600.0	600.0	1.2	1.2	-88.25	1.8	-59.7	59.8	57.3	2.47	24.171 CC, ES		
700.0	700.0	697.9	697.9	1.5	1.4	-88.29	1.8	-61.4	61.5	58.6	2.91	21.158		
800.0	800.0	795.6	795.5	1.7	1.6	-88.41	1.8	-66.4	66.6	63.3	3.34	19.965		
900.0	900.0	892.8	892.3	1.9	1.9	-88.56	1.9	-74.7	75.1	71.3	3.78	19.861		
1,000.0	1,000.0	991.6	990.5	2.1	2.1	-88.71	1.9	-85.5	86.0	81.8	4.25	20.239		
1,100.0	1,100.0	1,091.0	1,089.3	2.4	2.4	-88.83	2.0	-96.4	97.0	92.3	4.73	20.506		
1,200.0	1,200.0	1,190.4	1,188.1	2.6	2.7	-88.93	2.0	-107.4	108.0	102.8	5.22	20.689		
1,300.0	1,300.0	1,289.8	1,286.9	2.8	2.9	-89.01	2.1	-118.3	119.1	113.3	5.72	20.818		
1,400.0	1,400.0	1,389.2	1,385.7	3.0	3.2	-89.07	2.1	-129.3	130.1	123.9	6.22	20.910		
1,500.0	1,500.0	1,488.6	1,484.5	3.3	3.5	-89.13	2.1	-140.2	141.1	134.4	6.73	20.978		
1,600.0	1,600.0	1,588.0	1,583.2	3.5	3.8	-89.17	2.2	-151.2	152.1	144.9	7.23	21.028		
1,700.0	1,700.0	1,687.4	1,682.0	3.7	4.1	-89.21	2.2	-162.1	163.1	155.4	7.74	21.066		
1,800.0	1,800.0	1,786.8	1,780.8	3.9	4.4	-89.25	2.3	-173.1	174.1	165.9	8.26	21.094		
1,900.0	1,900.0	1,886.1	1,879.6	4.2	4.7	-89.28	2.3	-184.0	185.2	176.4	8.77	21.116		
2,000.0	2,000.0	1,985.5	1,978.4	4.4	5.0	-89.31	2.3	-195.0	196.2	186.9	9.28	21.133		
2,100.0	2,100.0	2,084.9	2,077.2	4.6	5.3	-89.33	2.4	-205.9	207.2	197.4	9.80	21.146		
2,200.0	2,200.0	2,184.3	2,176.0	4.8	5.6	-89.36	2.4	-216.9	218.2	207.9	10.31	21.156		
2,300.0	2,300.0	2,283.7	2,274.8	5.1	5.9	-89.38	2.5	-227.8	229.2	218.4	10.83	21.163		
2,400.0	2,400.0	2,383.1	2,373.5	5.3	6.2	-89.40	2.5	-238.8	240.2	228.9	11.35	21.169		
2,500.0	2,500.0	2,482.5	2,472.3	5.5	6.5	-89.41	2.6	-249.7	251.2	239.4	11.87	21.174		
2,600.0	2,600.0	2,581.8	2,571.0	5.7	6.8	156.58	2.6	-260.6	263.1	251.6	11.42	23.038		
2,700.0	2,700.0	2,680.9	2,669.5	5.9	7.1	156.73	2.6	-271.6	276.5	264.6	11.83	23.376		
2,800.0	2,799.9	2,779.7	2,767.8	6.1	7.4	156.99	2.7	-282.4	291.5	279.2	12.23	23.824		
2,900.0	2,899.7	2,878.4	2,865.8	6.3	7.7	157.35	2.7	-293.3	307.9	295.3	12.65	24.349		
3,000.0	2,999.5	2,976.9	2,963.7	6.5	8.0	157.74	2.8	-304.2	324.7	311.6	13.07	24.840		
3,100.0	3,099.3	3,075.5	3,061.7	6.7	8.3	158.08	2.8	-315.0	341.5	328.0	13.50	25.297		
3,200.0	3,199.1	3,174.1	3,159.7	6.9	8.6	158.41	2.9	-325.9	358.0	344.1	13.94	25.677		
3,300.0	3,299.0	3,272.9	3,258.0	7.1	8.9	158.65	2.9	-336.8	373.0	358.7	14.40	25.910		
3,400.0	3,399.0	3,372.0	3,356.4	7.3	9.2	158.77	2.9	-347.7	386.5	371.6	14.85	26.023		
3,500.0	3,499.0	3,471.3	3,455.1	7.5	9.5	158.79	3.0	-358.6	398.3	383.0	15.29	26.051		
3,600.0	3,599.0	3,570.7	3,553.9	7.7	9.8	-87.26	3.0	-369.6	409.3	393.6	15.73	26.025		
3,700.0	3,699.0	3,670.1	3,652.7	7.9	10.1	-87.33	3.1	-380.5	420.3	404.1	16.18	25.971		
3,800.0	3,799.0	3,769.5	3,751.5	8.2	10.4	-87.39	3.1	-391.5	431.3	414.7	16.64	25.919		
3,900.0	3,899.0	3,868.9	3,850.3	8.4	10.7	-87.45	3.2	-402.4	442.3	425.2	17.10	25.869		
4,000.0	3,999.0	3,968.3	3,949.1	8.6	11.0	-87.51	3.2	-413.4	453.4	435.8	17.56	25.822		
4,100.0	4,099.0	4,067.7	4,047.9	8.8	11.3	-87.56	3.2	-424.3	464.4	446.3	18.01	25.778		
4,200.0	4,199.0	4,167.1	4,146.6	9.1	11.6	-87.61	3.3	-435.3	475.4	456.9	18.47	25.735		
4,300.0	4,299.0	4,266.5	4,245.4	9.3	11.9	-87.66	3.3	-446.2	486.4	467.4	18.93	25.694		
4,400.0	4,399.0	4,365.9	4,344.2	9.5	12.2	-87.71	3.4	-457.2	497.4	478.0	19.39	25.655		
4,500.0	4,499.0	4,465.2	4,443.0	9.7	12.5	-87.75	3.4	-468.1	508.4	488.5	19.85	25.617		
4,600.0	4,599.0	4,564.6	4,541.8	9.9	12.9	-87.80	3.5	-479.1	519.4	499.1	20.30	25.581		
4,700.0	4,699.0	4,664.0	4,640.6	10.2	13.2	-87.84	3.5	-490.0	530.4	509.6	20.76	25.547		
4,800.0	4,799.0	4,763.4	4,739.4	10.4	13.5	-87.88	3.5	-501.0	541.4	520.2	21.22	25.514		
4,900.0	4,899.0	4,862.8	4,838.1	10.6	13.8	-87.91	3.6	-511.9	552.4	530.8	21.68	25.482		
5,000.0	4,999.0	4,962.2	4,936.9	10.8	14.1	-87.95	3.6	-522.9	563.4	541.3	22.14	25.452		
5,100.0	5,099.0	5,061.6	5,035.7	11.1	14.4	-87.99	3.7	-533.8	574.4	551.9	22.60	25.422		

CC - Min centre to center distance or convergent point, SF - min separation factor, ES - min ellipse separation

Company:	Synergy Resources	Local Co-ordinate Reference:	Well SRC Gies D-15-22NHZ
Project:	SEC.15-T7N-R65W	TVD Reference:	WELL @ 4851.0ft (RKB - 13')
Reference Site:	SRC Gies Pad Sec.15-T7N-R65W	MD Reference:	WELL @ 4851.0ft (RKB - 13')
Site Error:	0.0ft	North Reference:	True
Reference Well:	SRC Gies D-15-22NHZ	Survey Calculation Method:	Minimum Curvature
Well Error:	0.0ft	Output errors are at	2.00 sigma
Reference Wellbore	Wellbore #1	Database:	landmark
Reference Design:	Plan #1 (5-7-14)	Offset TVD Reference:	Offset Datum

Offset Design												Offset Site Error:	0.0 ft
Survey Program: 0-MWD												Offset Well Error:	0.0 ft
Reference		Offset		Semi Major Axis			Distance						Warning
Measured Depth (ft)	Vertical Depth (ft)	Measured Depth (ft)	Vertical Depth (ft)	Reference (ft)	Offset (ft)	Highside Toolface (°)	Offset Wellbore Centre +N/-S (ft)	+E/-W (ft)	Between Centres (ft)	Between Ellipses (ft)	Minimum Separation (ft)	Separation Factor	
5,200.0	5,199.0	5,161.0	5,134.5	11.3	14.7	-88.02	3.7	-544.8	585.5	562.4	23.05	25.394	
5,300.0	5,299.0	5,260.4	5,233.3	11.5	15.0	-88.05	3.8	-555.7	596.5	573.0	23.51	25.367	
5,400.0	5,399.0	5,359.8	5,332.1	11.7	15.3	-88.08	3.8	-566.6	607.5	583.5	23.97	25.341	
5,500.0	5,499.0	5,459.2	5,430.9	12.0	15.6	-88.11	3.8	-577.6	618.5	594.1	24.43	25.315	
5,600.0	5,599.0	5,558.5	5,529.7	12.2	15.9	-88.14	3.9	-588.5	629.5	604.6	24.89	25.291	
5,700.0	5,699.0	5,657.9	5,628.4	12.4	16.2	-88.17	3.9	-599.5	640.5	615.2	25.35	25.267	
5,800.0	5,799.0	5,770.0	5,739.9	12.6	16.5	-88.20	4.0	-611.3	651.1	625.3	25.82	25.215	
5,900.0	5,899.0	5,899.3	5,868.9	12.8	16.8	-88.22	4.0	-620.1	657.9	631.7	26.28	25.032	
6,000.0	5,999.0	6,029.1	5,998.7	13.1	17.0	-88.23	4.0	-623.1	660.2	633.5	26.73	24.699	
6,100.0	6,099.0	6,129.5	6,099.0	13.3	17.1	-88.23	4.0	-623.1	660.2	633.1	27.15	24.321	
6,200.0	6,199.0	6,229.5	6,199.0	13.5	17.3	-88.23	4.0	-623.1	660.2	632.7	27.57	23.952	
6,300.0	6,299.0	6,329.5	6,299.0	13.7	17.5	-88.23	4.0	-623.1	660.2	632.3	27.98	23.594	
6,400.0	6,399.0	6,429.5	6,399.0	14.0	17.6	-88.23	4.0	-623.1	660.2	631.8	28.40	23.245	
6,500.0	6,499.0	6,529.5	6,499.0	14.2	17.8	-88.23	4.0	-623.1	660.2	631.4	28.82	22.906	
6,600.0	6,598.8	6,629.3	6,598.8	14.4	18.0	92.31	4.0	-623.1	660.4	631.2	29.21	22.609	
6,700.0	6,697.2	6,727.7	6,697.2	14.6	18.1	93.72	4.0	-623.1	661.3	631.8	29.58	22.358	
6,800.0	6,792.2	6,822.7	6,792.2	14.8	18.3	96.02	4.0	-623.1	664.1	634.2	29.94	22.179	
6,900.0	6,882.0	6,929.3	6,898.5	15.0	18.5	99.00	-3.7	-623.1	669.4	639.0	30.33	22.073	
7,000.0	6,964.9	7,043.5	7,009.6	15.3	18.7	101.90	-29.3	-623.0	676.3	645.6	30.74	22.002	
7,100.0	7,039.1	7,166.0	7,122.7	15.7	18.9	104.65	-76.0	-622.8	684.5	653.3	31.23	21.919	
7,200.0	7,103.3	7,297.8	7,233.5	16.3	19.2	107.16	-146.9	-622.6	693.1	661.2	31.86	21.755	
7,300.0	7,156.2	7,438.9	7,335.7	17.0	19.6	109.31	-243.9	-622.2	701.2	668.4	32.74	21.417	
7,400.0	7,196.9	7,588.9	7,421.2	17.8	20.3	110.98	-366.8	-621.7	707.8	673.8	34.00	20.819	
7,500.0	7,224.4	7,745.7	7,481.3	18.9	21.4	112.02	-511.3	-621.2	712.0	676.3	35.75	19.915	
7,600.0	7,238.3	7,906.0	7,508.7	20.0	22.9	112.32	-669.0	-620.6	713.2	675.2	38.06	18.740	
7,700.0	7,240.0	8,022.4	7,510.0	21.3	24.2	112.26	-785.3	-620.1	712.9	672.5	40.42	17.636	
7,800.0	7,240.0	8,122.4	7,510.0	22.7	25.5	112.26	-885.3	-619.8	712.9	670.0	42.92	16.611	
7,900.0	7,240.0	8,222.4	7,510.0	24.1	26.8	112.26	-985.3	-619.4	712.9	667.3	45.56	15.647	
8,000.0	7,240.0	8,322.4	7,510.0	25.6	28.1	112.26	-1,085.3	-619.0	712.9	664.5	48.33	14.750	
8,100.0	7,240.0	8,422.4	7,510.0	27.2	29.6	112.26	-1,185.3	-618.6	712.9	661.7	51.20	13.922	
8,200.0	7,240.0	8,522.4	7,510.0	28.8	31.1	112.26	-1,285.3	-618.2	712.8	658.7	54.16	13.161	
8,300.0	7,240.0	8,622.4	7,510.0	30.4	32.6	112.26	-1,385.3	-617.9	712.8	655.6	57.20	12.463	
8,400.0	7,240.0	8,722.4	7,510.0	32.1	34.2	112.26	-1,485.3	-617.5	712.8	652.5	60.30	11.822	
8,500.0	7,240.0	8,822.4	7,510.0	33.8	35.8	112.26	-1,585.3	-617.1	712.8	649.4	63.45	11.235	
8,600.0	7,240.0	8,922.4	7,510.0	35.5	37.5	112.26	-1,685.3	-616.7	712.8	646.2	66.65	10.695	
8,700.0	7,240.0	9,022.4	7,510.0	37.2	39.1	112.26	-1,785.3	-616.3	712.8	642.9	69.88	10.200	
8,800.0	7,240.0	9,122.4	7,510.0	39.0	40.8	112.26	-1,885.3	-616.0	712.8	639.6	73.16	9.743	
8,900.0	7,240.0	9,222.4	7,510.0	40.7	42.6	112.26	-1,985.3	-615.6	712.8	636.3	76.46	9.322	
9,000.0	7,240.0	9,322.4	7,510.0	42.5	44.3	112.26	-2,085.3	-615.2	712.8	633.0	79.79	8.933	
9,100.0	7,240.0	9,422.4	7,510.0	44.3	46.0	112.26	-2,185.3	-614.8	712.8	629.6	83.14	8.573	
9,200.0	7,240.0	9,522.4	7,510.0	46.1	47.8	112.26	-2,285.3	-614.4	712.8	626.2	86.51	8.239	
9,300.0	7,240.0	9,622.4	7,510.0	48.0	49.6	112.26	-2,385.3	-614.1	712.7	622.8	89.91	7.928	
9,400.0	7,240.0	9,722.4	7,510.0	49.8	51.3	112.26	-2,485.3	-613.7	712.7	619.4	93.31	7.638	
9,500.0	7,240.0	9,822.4	7,510.0	51.6	53.1	112.26	-2,585.3	-613.3	712.7	616.0	96.73	7.368	
9,600.0	7,240.0	9,922.4	7,510.0	53.4	54.9	112.26	-2,685.2	-612.9	712.7	612.6	100.17	7.115	
9,700.0	7,240.0	10,022.4	7,510.0	55.3	56.8	112.26	-2,785.2	-612.6	712.7	609.1	103.62	6.878	
9,800.0	7,240.0	10,122.4	7,510.0	57.1	58.6	112.26	-2,885.2	-612.2	712.7	605.6	107.07	6.656	
9,900.0	7,240.0	10,222.4	7,510.0	59.0	60.4	112.26	-2,985.2	-611.8	712.7	602.2	110.54	6.447	
10,000.0	7,240.0	10,322.4	7,510.0	60.9	62.2	112.26	-3,085.2	-611.4	712.7	598.7	114.01	6.251	
10,100.0	7,240.0	10,422.4	7,510.0	62.7	64.1	112.26	-3,185.2	-611.0	712.7	595.2	117.50	6.066	
10,200.0	7,240.0	10,522.4	7,510.0	64.6	65.9	112.26	-3,285.2	-610.7	712.7	591.7	120.99	5.890	
10,300.0	7,240.0	10,622.4	7,510.0	66.5	67.7	112.26	-3,385.2	-610.3	712.7	588.2	124.48	5.725	

CC - Min centre to center distance or convergent point, SF - min separation factor, ES - min ellipse separation

Company:	Synergy Resources	Local Co-ordinate Reference:	Well SRC Gies D-15-22NHZ
Project:	SEC.15-T7N-R65W	TVD Reference:	WELL @ 4851.0ft (RKB - 13')
Reference Site:	SRC Gies Pad Sec.15-T7N-R65W	MD Reference:	WELL @ 4851.0ft (RKB - 13')
Site Error:	0.0ft	North Reference:	True
Reference Well:	SRC Gies D-15-22NHZ	Survey Calculation Method:	Minimum Curvature
Well Error:	0.0ft	Output errors are at	2.00 sigma
Reference Wellbore	Wellbore #1	Database:	landmark
Reference Design:	Plan #1 (5-7-14)	Offset TVD Reference:	Offset Datum

Offset Design SRC Gies Pad Sec.15-T7N-R65W - SRC Gies T-15-22CHZ - Wellbore #1 - Plan #1 (5-7-14)												Offset Site Error:	0.0 ft
Survey Program: 0-MWD												Offset Well Error:	0.0 ft
Reference		Offset		Semi Major Axis			Distance						Warning
Measured Depth (ft)	Vertical Depth (ft)	Measured Depth (ft)	Vertical Depth (ft)	Reference (ft)	Offset (ft)	Highside Toolface (°)	Offset Wellbore Centre +N/-S (ft)	+E/-W (ft)	Between Centres (ft)	Between Ellipses (ft)	Minimum Separation (ft)	Separation Factor	
10,400.0	7,240.0	10,722.4	7,510.0	68.3	69.6	112.26	-3,485.2	-609.9	712.7	584.7	127.99	5.568	
10,500.0	7,240.0	10,822.4	7,510.0	70.2	71.5	112.26	-3,585.2	-609.5	712.6	581.1	131.50	5.419	
10,600.0	7,240.0	10,922.4	7,510.0	72.1	73.3	112.26	-3,685.2	-609.1	712.6	577.6	135.01	5.278	
10,700.0	7,240.0	11,022.4	7,510.0	74.0	75.2	112.26	-3,785.2	-608.8	712.6	574.1	138.53	5.144	
10,800.0	7,240.0	11,122.4	7,510.0	75.8	77.0	112.26	-3,885.2	-608.4	712.6	570.6	142.05	5.017	
10,900.0	7,240.0	11,222.4	7,510.0	77.7	78.9	112.26	-3,985.2	-608.0	712.6	567.0	145.58	4.895	
11,000.0	7,240.0	11,322.4	7,510.0	79.6	80.8	112.27	-4,085.2	-607.6	712.6	563.5	149.11	4.779	
11,100.0	7,240.0	11,422.4	7,510.0	81.5	82.6	112.27	-4,185.2	-607.2	712.6	559.9	152.65	4.668	
11,200.0	7,240.0	11,522.4	7,510.0	83.4	84.5	112.27	-4,285.2	-606.9	712.6	556.4	156.18	4.562	
11,300.0	7,240.0	11,622.4	7,510.0	85.3	86.4	112.27	-4,385.2	-606.5	712.6	552.9	159.72	4.461	
11,400.0	7,240.0	11,722.4	7,510.0	87.2	88.2	112.27	-4,485.2	-606.1	712.6	549.4	163.19	4.366	
11,426.4	7,240.0	11,748.7	7,510.0	87.6	88.6	112.27	-4,511.6	-606.0	712.6	548.6	163.94	4.346	
11,434.8	7,240.0	11,751.8	7,510.0	87.7	88.7	112.27	-4,514.7	-606.0	712.6	548.5	164.11	4.342 SF	

Company:	Synergy Resources	Local Co-ordinate Reference:	Well SRC Gies D-15-22NHZ
Project:	SEC.15-T7N-R65W	TVD Reference:	WELL @ 4851.0ft (RKB - 13')
Reference Site:	SRC Gies Pad Sec.15-T7N-R65W	MD Reference:	WELL @ 4851.0ft (RKB - 13')
Site Error:	0.0ft	North Reference:	True
Reference Well:	SRC Gies D-15-22NHZ	Survey Calculation Method:	Minimum Curvature
Well Error:	0.0ft	Output errors are at	2.00 sigma
Reference Wellbore	Wellbore #1	Database:	landmark
Reference Design:	Plan #1 (5-7-14)	Offset TVD Reference:	Offset Datum

Offset Design												Offset Site Error:	0.0 ft
Survey Program: 0-MWD												Offset Well Error:	0.0 ft
Reference		Offset		Semi Major Axis			Distance						
Measured Depth (ft)	Vertical Depth (ft)	Measured Depth (ft)	Vertical Depth (ft)	Reference (ft)	Offset (ft)	Highside Toolface (°)	Offset Wellbore Centre +N/-S (ft)	+E/-W (ft)	Between Centres (ft)	Between Ellipses (ft)	Minimum Separation (ft)	Separation Factor	Warning
0.0	0.0	0.0	0.0	0.0	0.0	-88.42	1.1	-39.7	39.7				
100.0	100.0	100.0	100.0	0.1	0.1	-88.42	1.1	-39.7	39.7	39.5	0.22	176.828	
200.0	200.0	200.0	200.0	0.3	0.3	-88.42	1.1	-39.7	39.7	39.1	0.67	58.943	
300.0	300.0	300.0	300.0	0.6	0.6	-88.42	1.1	-39.7	39.7	38.6	1.12	35.366	
400.0	400.0	400.0	400.0	0.8	0.8	-88.42	1.1	-39.7	39.7	38.2	1.57	25.261	
500.0	500.0	500.0	500.0	1.0	1.0	-88.42	1.1	-39.7	39.7	37.7	2.02	19.648	
600.0	600.0	600.0	600.0	1.2	1.2	-88.42	1.1	-39.7	39.7	37.3	2.47	16.075	
700.0	700.0	700.0	700.0	1.5	1.5	-88.42	1.1	-39.7	39.7	36.8	2.92	13.602	
800.0	800.0	800.0	800.0	1.7	1.7	-88.42	1.1	-39.7	39.7	36.4	3.37	11.789	
900.0	900.0	900.0	900.0	1.9	1.9	-88.42	1.1	-39.7	39.7	35.9	3.82	10.402	
1,000.0	1,000.0	1,000.0	1,000.0	2.1	2.1	-88.42	1.1	-39.7	39.7	35.5	4.27	9.307	
1,100.0	1,100.0	1,100.0	1,100.0	2.4	2.4	-88.42	1.1	-39.7	39.7	35.0	4.72	8.420	
1,200.0	1,200.0	1,200.0	1,200.0	2.6	2.6	-88.42	1.1	-39.7	39.7	34.6	5.17	7.688 CC, ES	
1,300.0	1,300.0	1,298.6	1,298.6	2.8	2.8	-88.51	1.1	-41.4	41.5	35.9	5.60	7.401	
1,400.0	1,400.0	1,397.0	1,396.8	3.0	3.0	-88.74	1.0	-46.5	46.6	40.6	6.03	7.733	
1,500.0	1,500.0	1,494.9	1,494.3	3.3	3.2	-89.03	0.9	-54.9	55.2	48.7	6.46	8.537	
1,600.0	1,600.0	1,594.3	1,593.2	3.5	3.4	-89.28	0.8	-65.2	65.5	58.6	6.92	9.472	
1,700.0	1,700.0	1,693.8	1,692.2	3.7	3.7	-89.46	0.7	-75.4	75.8	68.5	7.38	10.281	
1,800.0	1,800.0	1,793.2	1,791.1	3.9	3.9	-89.60	0.6	-85.7	86.2	78.3	7.84	10.984	
1,900.0	1,900.0	1,892.7	1,890.0	4.2	4.2	-89.71	0.5	-96.0	96.5	88.2	8.32	11.600	
2,000.0	2,000.0	1,992.2	1,989.0	4.4	4.4	-89.80	0.4	-106.2	106.8	98.0	8.80	12.142	
2,100.0	2,100.0	2,091.6	2,087.9	4.6	4.7	-89.88	0.3	-116.5	117.1	107.9	9.28	12.623	
2,200.0	2,200.0	2,191.1	2,186.8	4.8	5.0	-89.94	0.1	-126.8	127.5	117.7	9.77	13.051	
2,300.0	2,300.0	2,290.5	2,285.8	5.1	5.2	-89.99	0.0	-137.1	137.8	127.5	10.26	13.435	
2,400.0	2,400.0	2,390.0	2,384.7	5.3	5.5	-90.03	-0.1	-147.3	148.1	137.4	10.75	13.781	
2,500.0	2,500.0	2,489.5	2,483.6	5.5	5.8	-90.07	-0.2	-157.6	158.4	147.2	11.24	14.093	
2,600.0	2,600.0	2,588.9	2,582.5	5.7	6.1	155.95	-0.3	-167.9	169.6	158.3	11.28	15.028	
2,700.0	2,700.0	2,688.0	2,681.1	5.9	6.3	156.20	-0.4	-178.1	182.3	170.6	11.69	15.597	
2,800.0	2,799.9	2,787.0	2,779.6	6.1	6.6	156.61	-0.5	-188.3	196.6	184.5	12.09	16.260	
2,900.0	2,899.7	2,885.7	2,877.8	6.3	6.9	157.14	-0.6	-198.5	212.3	199.8	12.50	16.991	
3,000.0	2,999.5	2,984.4	2,975.9	6.5	7.2	157.67	-0.8	-208.7	228.4	215.5	12.91	17.686	
3,100.0	3,099.3	3,083.1	3,074.1	6.7	7.5	158.13	-0.9	-218.9	244.5	231.2	13.34	18.334	
3,200.0	3,199.1	3,181.8	3,172.3	6.9	7.8	158.54	-1.0	-229.1	260.3	246.6	13.77	18.904	
3,300.0	3,299.0	3,280.8	3,270.7	7.1	8.0	158.80	-1.1	-239.3	274.7	260.5	14.22	19.320	
3,400.0	3,399.0	3,379.9	3,369.4	7.3	8.3	158.91	-1.2	-249.5	287.4	272.8	14.66	19.603	
3,500.0	3,499.0	3,479.3	3,468.2	7.5	8.6	158.89	-1.3	-259.8	298.6	283.5	15.09	19.781	
3,600.0	3,599.0	3,578.8	3,567.1	7.7	8.9	-87.21	-1.4	-270.1	308.9	293.4	15.53	19.894	
3,700.0	3,699.0	3,678.3	3,666.1	7.9	9.2	-87.32	-1.5	-280.3	319.2	303.2	15.98	19.976	
3,800.0	3,799.0	3,777.7	3,765.0	8.2	9.5	-87.42	-1.7	-290.6	329.5	313.1	16.43	20.053	
3,900.0	3,899.0	3,877.2	3,863.9	8.4	9.8	-87.52	-1.8	-300.9	339.8	322.9	16.88	20.126	
4,000.0	3,999.0	3,976.7	3,962.9	8.6	10.1	-87.61	-1.9	-311.2	350.1	332.8	17.34	20.195	
4,100.0	4,099.0	4,076.1	4,061.8	8.8	10.4	-87.70	-2.0	-321.4	360.4	342.6	17.79	20.259	
4,200.0	4,199.0	4,175.6	4,160.7	9.1	10.7	-87.78	-2.1	-331.7	370.8	352.5	18.24	20.321	
4,300.0	4,299.0	4,275.0	4,259.7	9.3	10.9	-87.86	-2.2	-342.0	381.1	362.4	18.70	20.379	
4,400.0	4,399.0	4,374.5	4,358.6	9.5	11.2	-87.93	-2.3	-352.2	391.4	372.2	19.15	20.434	
4,500.0	4,499.0	4,474.0	4,457.5	9.7	11.5	-88.00	-2.5	-362.5	401.7	382.1	19.61	20.486	
4,600.0	4,599.0	4,573.4	4,556.5	9.9	11.8	-88.07	-2.6	-372.8	412.0	392.0	20.06	20.536	
4,700.0	4,699.0	4,672.9	4,655.4	10.2	12.1	-88.13	-2.7	-383.1	422.3	401.8	20.52	20.584	
4,800.0	4,799.0	4,781.3	4,763.3	10.4	12.4	-88.19	-2.8	-393.6	432.1	411.1	20.98	20.598	
4,900.0	4,899.0	4,899.0	4,880.7	10.6	12.6	-88.23	-2.9	-400.9	438.3	416.9	21.42	20.461	
5,000.0	4,999.0	5,017.1	4,998.8	10.8	12.8	-88.24	-2.9	-403.4	440.4	418.6	21.86	20.150	
5,100.0	5,099.0	5,117.3	5,099.0	11.1	13.0	-88.24	-2.9	-403.4	440.4	418.2	22.28	19.769	

CC - Min centre to center distance or convergent point, SF - min separation factor, ES - min ellipse separation

Company:	Synergy Resources	Local Co-ordinate Reference:	Well SRC Gies D-15-22NHZ
Project:	SEC.15-T7N-R65W	TVD Reference:	WELL @ 4851.0ft (RKB - 13')
Reference Site:	SRC Gies Pad Sec.15-T7N-R65W	MD Reference:	WELL @ 4851.0ft (RKB - 13')
Site Error:	0.0ft	North Reference:	True
Reference Well:	SRC Gies D-15-22NHZ	Survey Calculation Method:	Minimum Curvature
Well Error:	0.0ft	Output errors are at	2.00 sigma
Reference Wellbore	Wellbore #1	Database:	landmark
Reference Design:	Plan #1 (5-7-14)	Offset TVD Reference:	Offset Datum

Offset Design		SRC Gies Pad Sec.15-T7N-R65W - SRC Gies T-15-22NHZ - Wellbore #1 - Plan #1 (5-7-14)										Offset Site Error:		0.0 ft
Survey Program: 0-MWD												Offset Well Error:		0.0 ft
Reference		Offset		Semi Major Axis			Distance							Warning
Measured Depth (ft)	Vertical Depth (ft)	Measured Depth (ft)	Vertical Depth (ft)	Reference (ft)	Offset (ft)	Highside Toolface (°)	Offset Wellbore Centre +N/-S (ft)	+E/-W (ft)	Between Centres (ft)	Between Ellipses (ft)	Minimum Separation (ft)	Separation Factor		
5,200.0	5,199.0	5,217.3	5,199.0	11.3	13.2	-88.24	-2.9	-403.4	440.4	417.7	22.71	19.397		
5,300.0	5,299.0	5,317.3	5,299.0	11.5	13.4	-88.24	-2.9	-403.4	440.4	417.3	23.13	19.038		
5,400.0	5,399.0	5,417.3	5,399.0	11.7	13.6	-88.24	-2.9	-403.4	440.4	416.9	23.56	18.692		
5,500.0	5,499.0	5,517.3	5,499.0	12.0	13.7	-88.24	-2.9	-403.4	440.4	416.4	23.99	18.357		
5,600.0	5,599.0	5,617.3	5,599.0	12.2	13.9	-88.24	-2.9	-403.4	440.4	416.0	24.42	18.034		
5,700.0	5,699.0	5,717.3	5,699.0	12.4	14.1	-88.24	-2.9	-403.4	440.4	415.6	24.85	17.721		
5,800.0	5,799.0	5,817.3	5,799.0	12.6	14.3	-88.24	-2.9	-403.4	440.4	415.2	25.29	17.419		
5,900.0	5,899.0	5,917.3	5,899.0	12.8	14.5	-88.24	-2.9	-403.4	440.4	414.7	25.72	17.126		
6,000.0	5,999.0	6,017.3	5,999.0	13.1	14.7	-88.24	-2.9	-403.4	440.4	414.3	26.15	16.842		
6,100.0	6,099.0	6,117.3	6,099.0	13.3	14.9	-88.24	-2.9	-403.4	440.4	413.9	26.58	16.568		
6,200.0	6,199.0	6,217.3	6,199.0	13.5	15.1	-88.24	-2.9	-403.4	440.4	413.4	27.02	16.302		
6,300.0	6,299.0	6,317.3	6,299.0	13.7	15.3	-88.24	-2.9	-403.4	440.4	413.0	27.45	16.044		
6,400.0	6,399.0	6,417.3	6,399.0	14.0	15.5	-88.24	-2.9	-403.4	440.4	412.6	27.89	15.794		
6,500.0	6,499.0	6,517.3	6,499.0	14.2	15.7	-88.24	-2.9	-403.4	440.4	412.1	28.32	15.551		
6,600.0	6,598.8	6,618.9	6,600.5	14.4	15.8	91.96	-7.0	-403.4	440.4	411.7	28.71	15.342		
6,700.0	6,697.2	6,721.0	6,700.9	14.6	16.0	91.91	-25.1	-403.3	440.4	411.3	29.08	15.147		
6,800.0	6,792.2	6,823.1	6,797.6	14.8	16.2	91.82	-57.3	-403.2	440.4	410.9	29.48	14.941		
6,900.0	6,882.0	6,925.0	6,888.7	15.0	16.4	91.70	-102.9	-403.0	440.4	410.4	29.96	14.698		
7,000.0	6,964.9	7,026.8	6,972.3	15.3	16.7	91.54	-160.7	-402.8	440.3	409.7	30.59	14.392		
7,100.0	7,039.1	7,128.4	7,046.8	15.7	17.1	91.36	-229.8	-402.5	440.3	408.8	31.45	14.000		
7,200.0	7,103.3	7,229.7	7,110.5	16.3	17.5	91.14	-308.4	-402.2	440.2	407.6	32.58	13.512		
7,300.0	7,156.2	7,330.8	7,162.5	17.0	18.2	90.91	-395.0	-401.9	440.2	406.1	34.03	12.935		
7,400.0	7,196.9	7,431.7	7,201.6	17.8	19.0	90.65	-487.9	-401.5	440.1	404.3	35.81	12.291		
7,500.0	7,224.4	7,532.2	7,227.3	18.9	20.0	90.39	-585.0	-401.2	440.1	402.2	37.90	11.613		
7,600.0	7,238.3	7,632.5	7,239.2	20.0	21.1	90.12	-684.5	-400.8	440.1	399.8	40.25	10.934		
7,700.0	7,240.0	7,732.5	7,240.0	21.3	22.3	90.00	-784.5	-400.4	440.0	397.2	42.80	10.280		
7,800.0	7,240.0	7,832.5	7,240.0	22.7	23.6	90.00	-884.5	-400.0	440.0	394.5	45.53	9.664		
7,900.0	7,240.0	7,932.5	7,240.0	24.1	25.0	90.00	-984.5	-399.6	440.0	391.6	48.41	9.088		
8,000.0	7,240.0	8,032.5	7,240.0	25.6	26.5	90.00	-1,084.5	-399.2	440.0	388.6	51.42	8.556		
8,100.0	7,240.0	8,132.5	7,240.0	27.2	28.0	90.00	-1,184.5	-398.8	440.0	385.4	54.54	8.067		
8,200.0	7,240.0	8,232.5	7,240.0	28.8	29.6	90.00	-1,284.5	-398.4	439.9	382.2	57.74	7.619		
8,300.0	7,240.0	8,332.5	7,240.0	30.4	31.2	90.00	-1,384.5	-398.1	439.9	378.9	61.02	7.210		
8,400.0	7,240.0	8,432.5	7,240.0	32.1	32.9	90.00	-1,484.5	-397.7	439.9	375.5	64.36	6.835		
8,500.0	7,240.0	8,532.5	7,240.0	33.8	34.5	90.00	-1,584.5	-397.3	439.9	372.1	67.75	6.492		
8,600.0	7,240.0	8,632.5	7,240.0	35.5	36.2	90.00	-1,684.5	-396.9	439.9	368.7	71.20	6.178		
8,700.0	7,240.0	8,732.5	7,240.0	37.2	37.9	90.00	-1,784.5	-396.5	439.8	365.2	74.68	5.890		
8,800.0	7,240.0	8,832.5	7,240.0	39.0	39.7	90.00	-1,884.5	-396.1	439.8	361.6	78.20	5.625		
8,900.0	7,240.0	8,932.5	7,240.0	40.7	41.4	90.00	-1,984.5	-395.7	439.8	358.1	81.74	5.380		
9,000.0	7,240.0	9,032.5	7,240.0	42.5	43.2	90.00	-2,084.5	-395.3	439.8	354.5	85.31	5.155		
9,100.0	7,240.0	9,132.5	7,240.0	44.3	45.0	90.00	-2,184.5	-395.0	439.8	350.9	88.91	4.946		
9,200.0	7,240.0	9,232.5	7,240.0	46.1	46.8	90.00	-2,284.5	-394.6	439.8	347.2	92.53	4.753		
9,300.0	7,240.0	9,332.5	7,240.0	48.0	48.6	90.00	-2,384.5	-394.2	439.7	343.6	96.16	4.573		
9,400.0	7,240.0	9,432.5	7,240.0	49.8	50.4	90.00	-2,484.5	-393.8	439.7	339.9	99.81	4.405		
9,500.0	7,240.0	9,532.5	7,240.0	51.6	52.2	90.00	-2,584.5	-393.4	439.7	336.2	103.48	4.249		
9,600.0	7,240.0	9,632.5	7,240.0	53.4	54.1	90.00	-2,684.5	-393.0	439.7	332.5	107.16	4.103		
9,700.0	7,240.0	9,732.5	7,240.0	55.3	55.9	90.00	-2,784.5	-392.6	439.7	328.8	110.85	3.966		
9,800.0	7,240.0	9,832.5	7,240.0	57.1	57.7	90.00	-2,884.5	-392.2	439.6	325.1	114.55	3.838		
9,900.0	7,240.0	9,932.5	7,240.0	59.0	59.6	90.00	-2,984.5	-391.8	439.6	321.4	118.26	3.717		
10,000.0	7,240.0	10,032.5	7,240.0	60.9	61.4	90.00	-3,084.5	-391.5	439.6	317.6	121.98	3.604		
10,100.0	7,240.0	10,132.5	7,240.0	62.7	63.3	90.00	-3,184.5	-391.1	439.6	313.9	125.70	3.497		
10,200.0	7,240.0	10,232.5	7,240.0	64.6	65.1	90.00	-3,284.5	-390.7	439.6	310.1	129.44	3.396		
10,300.0	7,240.0	10,332.5	7,240.0	66.5	67.0	90.00	-3,384.5	-390.3	439.5	306.4	133.18	3.300		

CC - Min centre to center distance or convergent point, SF - min separation factor, ES - min ellipse separation

Company:	Synergy Resources	Local Co-ordinate Reference:	Well SRC Gies D-15-22NHZ
Project:	SEC.15-T7N-R65W	TVD Reference:	WELL @ 4851.0ft (RKB - 13')
Reference Site:	SRC Gies Pad Sec.15-T7N-R65W	MD Reference:	WELL @ 4851.0ft (RKB - 13')
Site Error:	0.0ft	North Reference:	True
Reference Well:	SRC Gies D-15-22NHZ	Survey Calculation Method:	Minimum Curvature
Well Error:	0.0ft	Output errors are at	2.00 sigma
Reference Wellbore	Wellbore #1	Database:	landmark
Reference Design:	Plan #1 (5-7-14)	Offset TVD Reference:	Offset Datum

Offset Design SRC Gies Pad Sec.15-T7N-R65W - SRC Gies T-15-22NHZ - Wellbore #1 - Plan #1 (5-7-14)												Offset Site Error:	0.0 ft
Survey Program: 0-MWD												Offset Well Error:	0.0 ft
Reference	Offset	Semi Major Axis		Distance									
Measured Depth (ft)	Vertical Depth (ft)	Measured Depth (ft)	Vertical Depth (ft)	Reference (ft)	Offset (ft)	Highside Toolface (°)	Offset Wellbore Centre +N/-S (ft)	+E/-W (ft)	Between Centres (ft)	Between Ellipses (ft)	Minimum Separation (ft)	Separation Factor	Warning
10,400.0	7,240.0	10,432.5	7,240.0	68.3	68.9	90.00	-3,484.4	-389.9	439.5	302.6	136.92	3.210	
10,500.0	7,240.0	10,532.5	7,240.0	70.2	70.7	90.00	-3,584.4	-389.5	439.5	298.8	140.68	3.124	
10,600.0	7,240.0	10,632.5	7,240.0	72.1	72.6	90.00	-3,684.4	-389.1	439.5	295.1	144.43	3.043	
10,700.0	7,240.0	10,732.5	7,240.0	74.0	74.5	90.00	-3,784.4	-388.7	439.5	291.3	148.20	2.965	
10,800.0	7,240.0	10,832.5	7,240.0	75.8	76.4	90.00	-3,884.4	-388.3	439.5	287.5	151.96	2.892	
10,900.0	7,240.0	10,932.5	7,240.0	77.7	78.2	90.00	-3,984.4	-388.0	439.4	283.7	155.73	2.822	
11,000.0	7,240.0	11,032.5	7,240.0	79.6	80.1	90.00	-4,084.4	-387.6	439.4	279.9	159.51	2.755	
11,100.0	7,240.0	11,132.5	7,240.0	81.5	82.0	90.00	-4,184.4	-387.2	439.4	276.1	163.29	2.691	
11,200.0	7,240.0	11,232.5	7,240.0	83.4	83.9	90.00	-4,284.4	-386.8	439.4	272.3	167.07	2.630	
11,300.0	7,240.0	11,332.5	7,240.0	85.3	85.8	90.00	-4,384.4	-386.4	439.4	268.5	170.85	2.572	
11,400.0	7,240.0	11,432.5	7,240.0	87.2	87.7	90.00	-4,484.4	-386.0	439.3	264.7	174.64	2.516	
11,427.4	7,240.0	11,459.9	7,240.0	87.6	88.2	90.00	-4,511.8	-385.9	439.3	263.8	175.58	2.502	
11,434.8	7,240.0	11,463.8	7,240.0	87.7	88.3	90.00	-4,515.8	-385.9	439.4	263.6	175.77	2.500 SF	

Reference Depths are relative to WELL @ 4851.0ft (RKB - 13')
Offset Depths are relative to Offset Datum
Central Meridian is -105.500000 °

Coordinates are relative to: SRC Gies D-15-22NHZ
Coordinate System is US State Plane 1983, Colorado Northern Zone
Grid Convergence at Surface is: 0.55°



Company: Synergy Resources
Project: SEC.15-T7N-R65W
Reference Site: SRC Gies Pad Sec.15-T7N-R65W
Site Error: 0.0ft
Reference Well: SRC Gies D-15-22NHZ
Well Error: 0.0ft
Reference Wellbore Wellbore #1
Reference Design: Plan #1 (5-7-14)

Local Co-ordinate Reference: Well SRC Gies D-15-22NHZ
TVD Reference: WELL @ 4851.0ft (RKB - 13')
MD Reference: WELL @ 4851.0ft (RKB - 13')
North Reference: True
Survey Calculation Method: Minimum Curvature
Output errors are at 2.00 sigma
Database: landmark
Offset TVD Reference: Offset Datum

Reference Depths are relative to WELL @ 4851.0ft (RKB - 13')

Offset Depths are relative to Offset Datum

Central Meridian is -105.500000 °

Coordinates are relative to: SRC Gies D-15-22NHZ

Coordinate System is US State Plane 1983, Colorado Northern Zone

Grid Convergence at Surface is: 0.55°

