

Synergy Resources

Well Name: **SRC Gies D-15-22CHZ**

Surface Location: SRC Gies Pad Sec.15-T7N-R65W

North American Datum 1983 , US State Plane 1983 , Colorado Northern Zone

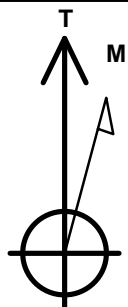
Ground Elevation: 4838.0

+N/-S	+E/-W	Northing	Easting	Latitude	Longitude	Slot
0.0	0.0	1450672.45	3237938.81	40.567341	-104.643546	

RKB - 13' WELL @ 4851.0ft (RKB - 13')

WELLBORE TARGET DETAILS

Name	TVD	+N/-S	+E/-W	Shape
SHL 272'FSL & 1067'FEL, Sec.15	1.0	0.0	0.0	Point
BHL 470'FSL & 1204'FEL, Sec.22	7510.0	-4516.9	-146.4	Point
Landing Pt. 460'FNL & 1221'FEL, Sec.22	7510.0	-726.8	-160.9	Point



Azimuths to True North
Magnetic North: 8.42°

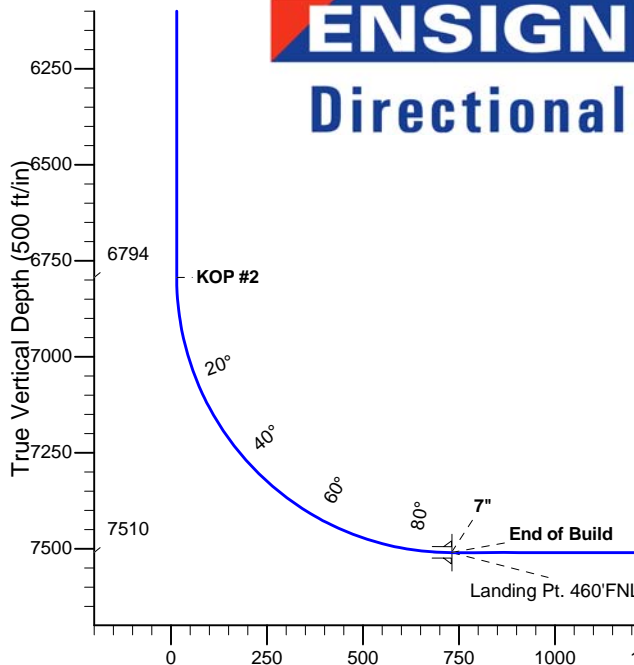
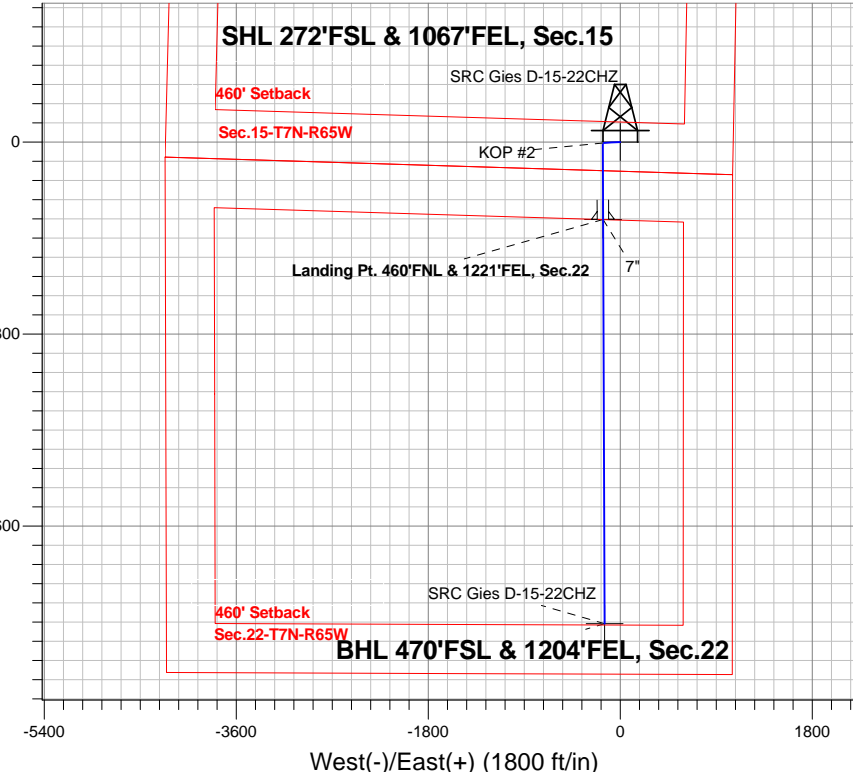
Magnetic Field
Strength: 52926.0snT
Dip Angle: 67.10°
Date: 5/8/2014
Model: IGRF2010

SRC Gies Pad Sec.15-T7N-R65W
SRC Gies D-15-22CHZ
Plan #1 (5-7-14)
11:52, May 14 2014

ANNOTATIONS

TVD	MD	Annotation
1400.0	1400.0	KOP #1
6793.8	6799.2	KOP #2
7510.0	7924.2	End of Build

South(-)/North(+) (1800 ft/in)



SECTION DETAILS

Sec	MD	Inc	Azi	TVD	+N/-S	+E/-W	DLeg	TFace	VSec	Target
1	0.0	0.00	0.00	0.0	0.0	0.0	0.00	0.00	0.0	
2	1400.0	0.00	0.00	1400.0	0.0	0.0	0.00	0.00	0.0	
3	1594.9	3.90	266.57	1594.8	-0.4	-6.6	2.00	266.57	0.6	
4	3810.5	3.90	266.57	3805.2	-9.4	-157.0	0.00	0.00	14.5	
5	4005.4	0.00	0.00	4000.0	-9.8	-163.6	2.00	180.00	15.1	
6	6799.2	0.00	0.00	6793.8	-9.8	-163.6	0.00	0.00	15.1	
7	7924.2	90.00	179.78	7510.0	-726.0	-160.9	8.00	179.78	730.8	
8	7925.0	90.00	179.78	7510.0	-726.8	-160.9	0.00	0.00	731.6	Landing Pt. 460'FNL & 1221'FEL, Sec.22
9	11715.1	90.00	179.78	7510.0	-4516.9	-146.4	0.00	0.00	4519.2	BHL 470'FSL & 1204'FEL, Sec.22

BHL 470'FSL & 1204'FEL, Sec.22

Vertical Section at 181.86° (500 ft/in)



Synergy Resources

SEC.15-T7N-R65W

SRC Gies Pad Sec.15-T7N-R65W

SRC Gies D-15-22CHZ

Wellbore #1

Plan: Plan #1 (5-7-14)

Standard Planning Report

14 May, 2014

Database:	landmark	Local Co-ordinate Reference:	Well SRC Gies D-15-22CHZ
Company:	Synergy Resources	TVD Reference:	WELL @ 4851.0ft (RKB - 13')
Project:	SEC.15-T7N-R65W	MD Reference:	WELL @ 4851.0ft (RKB - 13')
Site:	SRC Gies Pad Sec.15-T7N-R65W	North Reference:	True
Well:	SRC Gies D-15-22CHZ	Survey Calculation Method:	Minimum Curvature
Wellbore:	Wellbore #1		
Design:	Plan #1 (5-7-14)		

Project	SEC.15-T7N-R65W, Weld County, CO		
Map System:	US State Plane 1983	System Datum:	Mean Sea Level
Geo Datum:	North American Datum 1983		Using Well Reference Point
Map Zone:	Colorado Northern Zone		Using geodetic scale factor

Site										SRC Gies Pad Sec.15-T7N-R65W																			
Site Position:					Northing:					1,450,674.24 ft					Latitude:					40.567348									
From:					Lat/Long					Easting:					3,237,858.77 ft					Longitude:					-104.643834				
Position Uncertainty:					0.0 ft					Slot Radius:					"					Grid Convergence:					0.55 °				

Well	SRC Gies D-15-22CHZ					
Well Position	+N-S	-2.6 ft	Northing:	1,450,672.45 ft	Latitude:	40.567341
	+E-W	80.0 ft	Easting:	3,237,938.81 ft	Longitude:	-104.643546
Position Uncertainty		0.0 ft	Wellhead Elevation:	ft	Ground Level:	4,838.0 ft

Wellbore	Wellbore #1				
Magnetics	Model Name	Sample Date	Declination (°)	Dip Angle (°)	Field Strength (nT)
	IGRF2010	5/8/2014	8.42	67.10	52,926

Design	Plan #1 (5-7-14)			
Audit Notes:				
Version:	Phase:	PROTOTYPE	Tie On Depth:	0.0
Vertical Section:	Depth From (TVD) (ft)	+N/-S (ft)	+E/-W (ft)	Direction (°)
	0.0	0.0	0.0	181.86

Plan Sections										
Measured Depth (ft)	Inclination (°)	Azimuth (°)	Vertical Depth (ft)	+N/-S (ft)	+E/-W (ft)	Dogleg Rate (°/100ft)	Build Rate (°/100ft)	Turn Rate (°/100ft)	TFO (°)	Target
0.0	0.00	0.00	0.0	0.0	0.0	0.00	0.00	0.00	0.00	
1,400.0	0.00	0.00	1,400.0	0.0	0.0	0.00	0.00	0.00	0.00	
1,594.9	3.90	266.57	1,594.8	-0.4	-6.6	2.00	2.00	0.00	266.57	
3,810.5	3.90	266.57	3,805.2	-9.4	-157.0	0.00	0.00	0.00	0.00	
4,005.4	0.00	0.00	4,000.0	-9.8	-163.6	2.00	-2.00	0.00	180.00	
6,799.2	0.00	0.00	6,793.8	-9.8	-163.6	0.00	0.00	0.00	0.00	
7,924.2	90.00	179.78	7,510.0	-726.0	-160.9	8.00	8.00	0.00	179.78	
7,925.0	90.00	179.78	7,510.0	-726.8	-160.9	0.00	0.00	0.00	0.00	Landing Pt. 460'FN
11,715.1	90.00	179.78	7,510.0	-4,516.9	-146.4	0.00	0.00	0.00	0.00	BHL 470'FSL & 120'FN

Database:	landmark	Local Co-ordinate Reference:	Well SRC Gies D-15-22CHZ
Company:	Synergy Resources	TVD Reference:	WELL @ 4851.0ft (RKB - 13')
Project:	SEC.15-T7N-R65W	MD Reference:	WELL @ 4851.0ft (RKB - 13')
Site:	SRC Gies Pad Sec.15-T7N-R65W	North Reference:	True
Well:	SRC Gies D-15-22CHZ	Survey Calculation Method:	Minimum Curvature
Wellbore:	Wellbore #1		
Design:	Plan #1 (5-7-14)		

Planned Survey									
Measured Depth (ft)	Inclination (°)	Azimuth (°)	Vertical Depth (ft)	+N/-S (ft)	+E/-W (ft)	Vertical Section (ft)	Dogleg Rate (°/100ft)	Build Rate (°/100ft)	Turn Rate (°/100ft)
0.0	0.00	0.00	0.0	0.0	0.0	0.0	0.00	0.00	0.00
1.0	0.00	0.00	1.0	0.0	0.0	0.0	0.00	0.00	0.00
SHL 272'FSL & 1067'FEL, Sec.15									
100.0	0.00	0.00	100.0	0.0	0.0	0.0	0.00	0.00	0.00
200.0	0.00	0.00	200.0	0.0	0.0	0.0	0.00	0.00	0.00
300.0	0.00	0.00	300.0	0.0	0.0	0.0	0.00	0.00	0.00
400.0	0.00	0.00	400.0	0.0	0.0	0.0	0.00	0.00	0.00
500.0	0.00	0.00	500.0	0.0	0.0	0.0	0.00	0.00	0.00
600.0	0.00	0.00	600.0	0.0	0.0	0.0	0.00	0.00	0.00
700.0	0.00	0.00	700.0	0.0	0.0	0.0	0.00	0.00	0.00
800.0	0.00	0.00	800.0	0.0	0.0	0.0	0.00	0.00	0.00
900.0	0.00	0.00	900.0	0.0	0.0	0.0	0.00	0.00	0.00
1,000.0	0.00	0.00	1,000.0	0.0	0.0	0.0	0.00	0.00	0.00
1,100.0	0.00	0.00	1,100.0	0.0	0.0	0.0	0.00	0.00	0.00
1,200.0	0.00	0.00	1,200.0	0.0	0.0	0.0	0.00	0.00	0.00
1,300.0	0.00	0.00	1,300.0	0.0	0.0	0.0	0.00	0.00	0.00
1,400.0	0.00	0.00	1,400.0	0.0	0.0	0.0	0.00	0.00	0.00
KOP #1									
1,500.0	2.00	266.57	1,500.0	-0.1	-1.7	0.2	2.00	2.00	0.00
1,594.9	3.90	266.57	1,594.8	-0.4	-6.6	0.6	2.00	2.00	0.00
1,600.0	3.90	266.57	1,599.8	-0.4	-7.0	0.6	0.00	0.00	0.00
1,700.0	3.90	266.57	1,699.6	-0.8	-13.7	1.3	0.00	0.00	0.00
1,800.0	3.90	266.57	1,799.4	-1.2	-20.5	1.9	0.00	0.00	0.00
1,900.0	3.90	266.57	1,899.1	-1.6	-27.3	2.5	0.00	0.00	0.00
2,000.0	3.90	266.57	1,998.9	-2.0	-34.1	3.1	0.00	0.00	0.00
2,100.0	3.90	266.57	2,098.7	-2.4	-40.9	3.8	0.00	0.00	0.00
2,200.0	3.90	266.57	2,198.4	-2.9	-47.7	4.4	0.00	0.00	0.00
2,300.0	3.90	266.57	2,298.2	-3.3	-54.5	5.0	0.00	0.00	0.00
2,400.0	3.90	266.57	2,398.0	-3.7	-61.3	5.7	0.00	0.00	0.00
2,500.0	3.90	266.57	2,497.8	-4.1	-68.0	6.3	0.00	0.00	0.00
2,600.0	3.90	266.57	2,597.5	-4.5	-74.8	6.9	0.00	0.00	0.00
2,700.0	3.90	266.57	2,697.3	-4.9	-81.6	7.5	0.00	0.00	0.00
2,800.0	3.90	266.57	2,797.1	-5.3	-88.4	8.2	0.00	0.00	0.00
2,900.0	3.90	266.57	2,896.8	-5.7	-95.2	8.8	0.00	0.00	0.00
3,000.0	3.90	266.57	2,996.6	-6.1	-102.0	9.4	0.00	0.00	0.00
3,100.0	3.90	266.57	3,096.4	-6.5	-108.8	10.0	0.00	0.00	0.00
3,200.0	3.90	266.57	3,196.1	-6.9	-115.5	10.7	0.00	0.00	0.00
3,300.0	3.90	266.57	3,295.9	-7.3	-122.3	11.3	0.00	0.00	0.00
3,400.0	3.90	266.57	3,395.7	-7.7	-129.1	11.9	0.00	0.00	0.00
3,500.0	3.90	266.57	3,495.4	-8.1	-135.9	12.5	0.00	0.00	0.00
3,600.0	3.90	266.57	3,595.2	-8.5	-142.7	13.2	0.00	0.00	0.00
3,700.0	3.90	266.57	3,695.0	-9.0	-149.5	13.8	0.00	0.00	0.00
3,800.0	3.90	266.57	3,794.7	-9.4	-156.3	14.4	0.00	0.00	0.00
3,810.5	3.90	266.57	3,805.2	-9.4	-157.0	14.5	0.00	0.00	0.00
3,900.0	2.11	266.57	3,894.6	-9.7	-161.7	14.9	2.00	-2.00	0.00
4,000.0	0.11	266.57	3,994.6	-9.8	-163.6	15.1	2.00	-2.00	0.00
4,005.4	0.00	0.00	4,000.0	-9.8	-163.6	15.1	2.00	-2.00	0.00
4,100.0	0.00	0.00	4,094.6	-9.8	-163.6	15.1	0.00	0.00	0.00
4,200.0	0.00	0.00	4,194.6	-9.8	-163.6	15.1	0.00	0.00	0.00
4,300.0	0.00	0.00	4,294.6	-9.8	-163.6	15.1	0.00	0.00	0.00
4,400.0	0.00	0.00	4,394.6	-9.8	-163.6	15.1	0.00	0.00	0.00
4,500.0	0.00	0.00	4,494.6	-9.8	-163.6	15.1	0.00	0.00	0.00
4,600.0	0.00	0.00	4,594.6	-9.8	-163.6	15.1	0.00	0.00	0.00
4,700.0	0.00	0.00	4,694.6	-9.8	-163.6	15.1	0.00	0.00	0.00

Database:	landmark	Local Co-ordinate Reference:	Well SRC Gies D-15-22CHZ
Company:	Synergy Resources	TVD Reference:	WELL @ 4851.0ft (RKB - 13')
Project:	SEC.15-T7N-R65W	MD Reference:	WELL @ 4851.0ft (RKB - 13')
Site:	SRC Gies Pad Sec.15-T7N-R65W	North Reference:	True
Well:	SRC Gies D-15-22CHZ	Survey Calculation Method:	Minimum Curvature
Wellbore:	Wellbore #1		
Design:	Plan #1 (5-7-14)		

Planned Survey									
Measured Depth (ft)	Inclination (°)	Azimuth (°)	Vertical Depth (ft)	+N/-S (ft)	+E/-W (ft)	Vertical Section (ft)	Dogleg Rate (°/100ft)	Build Rate (°/100ft)	Turn Rate (°/100ft)
4,800.0	0.00	0.00	4,794.6	-9.8	-163.6	15.1	0.00	0.00	0.00
4,900.0	0.00	0.00	4,894.6	-9.8	-163.6	15.1	0.00	0.00	0.00
5,000.0	0.00	0.00	4,994.6	-9.8	-163.6	15.1	0.00	0.00	0.00
5,100.0	0.00	0.00	5,094.6	-9.8	-163.6	15.1	0.00	0.00	0.00
5,200.0	0.00	0.00	5,194.6	-9.8	-163.6	15.1	0.00	0.00	0.00
5,300.0	0.00	0.00	5,294.6	-9.8	-163.6	15.1	0.00	0.00	0.00
5,400.0	0.00	0.00	5,394.6	-9.8	-163.6	15.1	0.00	0.00	0.00
5,500.0	0.00	0.00	5,494.6	-9.8	-163.6	15.1	0.00	0.00	0.00
5,600.0	0.00	0.00	5,594.6	-9.8	-163.6	15.1	0.00	0.00	0.00
5,700.0	0.00	0.00	5,694.6	-9.8	-163.6	15.1	0.00	0.00	0.00
5,800.0	0.00	0.00	5,794.6	-9.8	-163.6	15.1	0.00	0.00	0.00
5,900.0	0.00	0.00	5,894.6	-9.8	-163.6	15.1	0.00	0.00	0.00
6,000.0	0.00	0.00	5,994.6	-9.8	-163.6	15.1	0.00	0.00	0.00
6,100.0	0.00	0.00	6,094.6	-9.8	-163.6	15.1	0.00	0.00	0.00
6,200.0	0.00	0.00	6,194.6	-9.8	-163.6	15.1	0.00	0.00	0.00
6,300.0	0.00	0.00	6,294.6	-9.8	-163.6	15.1	0.00	0.00	0.00
6,400.0	0.00	0.00	6,394.6	-9.8	-163.6	15.1	0.00	0.00	0.00
6,500.0	0.00	0.00	6,494.6	-9.8	-163.6	15.1	0.00	0.00	0.00
6,600.0	0.00	0.00	6,594.6	-9.8	-163.6	15.1	0.00	0.00	0.00
6,700.0	0.00	0.00	6,694.6	-9.8	-163.6	15.1	0.00	0.00	0.00
6,799.2	0.00	0.00	6,793.8	-9.8	-163.6	15.1	0.00	0.00	0.00
KOP #2									
6,800.0	0.06	179.78	6,794.6	-9.8	-163.6	15.1	7.71	7.71	0.00
6,900.0	8.06	179.78	6,894.2	-16.9	-163.6	22.2	8.00	8.00	0.00
7,000.0	16.06	179.78	6,992.0	-37.8	-163.5	43.0	8.00	8.00	0.00
7,100.0	24.06	179.78	7,085.8	-72.0	-163.4	77.3	8.00	8.00	0.00
7,200.0	32.06	179.78	7,174.0	-119.0	-163.2	124.3	8.00	8.00	0.00
7,300.0	40.06	179.78	7,254.8	-177.9	-163.0	183.0	8.00	8.00	0.00
7,400.0	48.06	179.78	7,326.6	-247.3	-162.7	252.5	8.00	8.00	0.00
7,500.0	56.06	179.78	7,388.0	-326.1	-162.4	331.2	8.00	8.00	0.00
7,600.0	64.06	179.78	7,437.9	-412.7	-162.1	417.8	8.00	8.00	0.00
7,700.0	72.06	179.78	7,475.2	-505.4	-161.7	510.4	8.00	8.00	0.00
7,800.0	80.06	179.78	7,499.3	-602.4	-161.3	607.3	8.00	8.00	0.00
7,900.0	88.06	179.78	7,509.6	-701.8	-161.0	706.6	8.00	8.00	0.00
7,924.2	90.00	179.78	7,510.0	-726.0	-160.9	730.8	8.00	8.00	0.00
End of Build - 7"									
7,925.0	90.00	179.78	7,510.0	-726.8	-160.9	731.6	0.29	0.29	0.00
Landing Pt. 460'FNL & 1221'FEL, Sec.22									
8,000.0	90.00	179.78	7,510.0	-801.8	-160.6	806.5	0.00	0.00	0.00
8,100.0	90.00	179.78	7,510.0	-901.8	-160.2	906.5	0.00	0.00	0.00
8,200.0	90.00	179.78	7,510.0	-1,001.8	-159.8	1,006.4	0.00	0.00	0.00
8,300.0	90.00	179.78	7,510.0	-1,101.8	-159.4	1,106.3	0.00	0.00	0.00
8,400.0	90.00	179.78	7,510.0	-1,201.8	-159.1	1,206.3	0.00	0.00	0.00
8,500.0	90.00	179.78	7,510.0	-1,301.8	-158.7	1,306.2	0.00	0.00	0.00
8,600.0	90.00	179.78	7,510.0	-1,401.8	-158.3	1,406.2	0.00	0.00	0.00
8,700.0	90.00	179.78	7,510.0	-1,501.8	-157.9	1,506.1	0.00	0.00	0.00
8,800.0	90.00	179.78	7,510.0	-1,601.8	-157.5	1,606.0	0.00	0.00	0.00
8,900.0	90.00	179.78	7,510.0	-1,701.8	-157.2	1,706.0	0.00	0.00	0.00
9,000.0	90.00	179.78	7,510.0	-1,801.8	-156.8	1,805.9	0.00	0.00	0.00
9,100.0	90.00	179.78	7,510.0	-1,901.8	-156.4	1,905.8	0.00	0.00	0.00
9,200.0	90.00	179.78	7,510.0	-2,001.8	-156.0	2,005.8	0.00	0.00	0.00
9,300.0	90.00	179.78	7,510.0	-2,101.8	-155.6	2,105.7	0.00	0.00	0.00
9,400.0	90.00	179.78	7,510.0	-2,201.8	-155.3	2,205.6	0.00	0.00	0.00

Database:	landmark	Local Co-ordinate Reference:	Well SRC Gies D-15-22CHZ
Company:	Synergy Resources	TVD Reference:	WELL @ 4851.0ft (RKB - 13')
Project:	SEC.15-T7N-R65W	MD Reference:	WELL @ 4851.0ft (RKB - 13')
Site:	SRC Gies Pad Sec.15-T7N-R65W	North Reference:	True
Well:	SRC Gies D-15-22CHZ	Survey Calculation Method:	Minimum Curvature
Wellbore:	Wellbore #1		
Design:	Plan #1 (5-7-14)		

Planned Survey									
Measured Depth (ft)	Inclination (°)	Azimuth (°)	Vertical Depth (ft)	+N/-S (ft)	+E/-W (ft)	Vertical Section (ft)	Dogleg Rate (°/100ft)	Build Rate (°/100ft)	Turn Rate (°/100ft)
9,500.0	90.00	179.78	7,510.0	-2,301.8	-154.9	2,305.6	0.00	0.00	0.00
9,600.0	90.00	179.78	7,510.0	-2,401.8	-154.5	2,405.5	0.00	0.00	0.00
9,700.0	90.00	179.78	7,510.0	-2,501.7	-154.1	2,505.4	0.00	0.00	0.00
9,800.0	90.00	179.78	7,510.0	-2,601.7	-153.7	2,605.4	0.00	0.00	0.00
9,900.0	90.00	179.78	7,510.0	-2,701.7	-153.3	2,705.3	0.00	0.00	0.00
10,000.0	90.00	179.78	7,510.0	-2,801.7	-153.0	2,805.2	0.00	0.00	0.00
10,100.0	90.00	179.78	7,510.0	-2,901.7	-152.6	2,905.2	0.00	0.00	0.00
10,200.0	90.00	179.78	7,510.0	-3,001.7	-152.2	3,005.1	0.00	0.00	0.00
10,300.0	90.00	179.78	7,510.0	-3,101.7	-151.8	3,105.0	0.00	0.00	0.00
10,400.0	90.00	179.78	7,510.0	-3,201.7	-151.4	3,205.0	0.00	0.00	0.00
10,500.0	90.00	179.78	7,510.0	-3,301.7	-151.1	3,304.9	0.00	0.00	0.00
10,600.0	90.00	179.78	7,510.0	-3,401.7	-150.7	3,404.8	0.00	0.00	0.00
10,700.0	90.00	179.78	7,510.0	-3,501.7	-150.3	3,504.8	0.00	0.00	0.00
10,800.0	90.00	179.78	7,510.0	-3,601.7	-149.9	3,604.7	0.00	0.00	0.00
10,900.0	90.00	179.78	7,510.0	-3,701.7	-149.5	3,704.6	0.00	0.00	0.00
11,000.0	90.00	179.78	7,510.0	-3,801.7	-149.2	3,804.6	0.00	0.00	0.00
11,100.0	90.00	179.78	7,510.0	-3,901.7	-148.8	3,904.5	0.00	0.00	0.00
11,200.0	90.00	179.78	7,510.0	-4,001.7	-148.4	4,004.4	0.00	0.00	0.00
11,300.0	90.00	179.78	7,510.0	-4,101.7	-148.0	4,104.4	0.00	0.00	0.00
11,400.0	90.00	179.78	7,510.0	-4,201.7	-147.6	4,204.3	0.00	0.00	0.00
11,500.0	90.00	179.78	7,510.0	-4,301.7	-147.3	4,304.2	0.00	0.00	0.00
11,600.0	90.00	179.78	7,510.0	-4,401.7	-146.9	4,404.2	0.00	0.00	0.00
11,700.0	90.00	179.78	7,510.0	-4,501.7	-146.5	4,504.1	0.00	0.00	0.00
11,715.1	90.00	179.78	7,510.0	-4,516.9	-146.4	4,519.2	0.00	0.00	0.00
BHL 470'FSL & 1204'FEL, Sec.22									

Casing Points				
Measured Depth (ft)	Vertical Depth (ft)	Name	Casing Diameter (")	Hole Diameter (")
7,924.2	7,510.0	7"	7	7-1/2

Plan Annotations				
Measured Depth (ft)	Vertical Depth (ft)	Local Coordinates		Comment
		+N/-S (ft)	+E/-W (ft)	
1,400.0	1,400.0	0.0	0.0	KOP #1
6,799.2	6,793.8	-0.4	-6.6	KOP #2
7,924.2	7,510.0	-9.4	-157.0	End of Build



Synergy Resources

SEC.15-T7N-R65W

SRC Gies Pad Sec.15-T7N-R65W

SRC Gies D-15-22CHZ

Wellbore #1

Plan #1 (5-7-14)

Anticollision Report

14 May, 2014

Company:	Synergy Resources	Local Co-ordinate Reference:	Well SRC Gies D-15-22CHZ
Project:	SEC.15-T7N-R65W	TVD Reference:	WELL @ 4851.0ft (RKB - 13')
Reference Site:	SRC Gies Pad Sec.15-T7N-R65W	MD Reference:	WELL @ 4851.0ft (RKB - 13')
Site Error:	0.0ft	North Reference:	True
Reference Well:	SRC Gies D-15-22CHZ	Survey Calculation Method:	Minimum Curvature
Well Error:	0.0ft	Output errors are at	2.00 sigma
Reference Wellbore	Wellbore #1	Database:	landmark
Reference Design:	Plan #1 (5-7-14)	Offset TVD Reference:	Offset Datum

Reference	Plan #1 (5-7-14)		
Filter type:	NO GLOBAL FILTER: Using user defined selection & filtering criteria		
Interpolation Method:	MD Interval 100.0ft	Error Model:	ISCWSA
Depth Range:	Unlimited	Scan Method:	Closest Approach 3D
Results Limited by:	Maximum center-center distance of 1,000.0ft	Error Surface:	Elliptical Conic
Warning Levels Evaluated at:	2.00 Sigma		

Survey Tool Program	Date 5/14/2014			
From (ft)	To (ft)	Survey (Wellbore)	Tool Name	Description
0.0	11,715.1	Plan #1 (5-7-14) (Wellbore #1)	MWD	MWD - Standard

Summary						
Site Name	Reference Measured Depth (ft)	Offset Measured Depth (ft)	Distance Between Centres (ft)	Distance Between Ellipses (ft)	Separation Factor	Warning
Offset Well - Wellbore - Design						
SRC Gies Pad Sec.15-T7N-R65W						
SRC Gies 34-15-22CHZ - Wellbore #1 - Plan #1 (5-6-14)	166.3	167.3	80.1	79.5	152.433	CC
SRC Gies 34-15-22CHZ - Wellbore #1 - Plan #1 (5-6-14)	200.0	200.0	80.1	79.4	118.734	ES
SRC Gies 34-15-22CHZ - Wellbore #1 - Plan #1 (5-6-14)	11,715.1	11,810.0	879.7	703.1	4.981	SF
SRC Gies 34-15-22NHZ - Wellbore #1 - Plan #1 (5-7-14)	400.0	400.0	60.0	58.5	38.160	CC, ES
SRC Gies 34-15-22NHZ - Wellbore #1 - Plan #1 (5-7-14)	11,715.1	11,509.0	713.2	547.0	4.291	SF
SRC Gies 44-15-22CHZ - Wellbore #1 - Plan #1 (5-7-14)	800.0	800.0	40.0	36.7	11.871	CC, ES
SRC Gies 44-15-22CHZ - Wellbore #1 - Plan #1 (5-7-14)	11,715.1	11,703.7	439.8	263.8	2.498	SF
SRC Gies 44-15-22NHZ - Wellbore #1 - Plan #1 (5-7-14)	600.0	600.0	59.8	57.3	24.167	CC, ES
SRC Gies 44-15-22NHZ - Wellbore #1 - Plan #1 (5-7-14)	11,715.1	11,439.4	713.1	547.8	4.316	SF
SRC Gies D-15-22NHZ - Wellbore #1 - Plan #1 (5-7-14)	1,000.0	1,000.0	19.7	15.5	4.620	CC, ES
SRC Gies D-15-22NHZ - Wellbore #1 - Plan #1 (5-7-14)	11,715.1	11,432.2	348.0	226.0	2.851	SF
SRC Gies T-15-22CHZ - Wellbore #1 - Plan #1 (5-7-14)	600.0	600.0	40.0	37.6	16.192	CC, ES
SRC Gies T-15-22CHZ - Wellbore #1 - Plan #1 (5-7-14)	11,715.1	11,751.8	439.8	263.7	2.497	SF
SRC Gies T-15-22NHZ - Wellbore #1 - Plan #1 (5-7-14)	1,200.0	1,200.0	20.0	14.8	3.872	CC, ES
SRC Gies T-15-22NHZ - Wellbore #1 - Plan #1 (5-7-14)	11,715.1	11,463.8	348.1	224.6	2.819	SF

Offset Design	SRC Gies Pad Sec.15-T7N-R65W - SRC Gies 34-15-22CHZ - Wellbore #1 - Plan #1 (5-6-14)												Offset Site Error:	0.0 ft
Survey Program:	0-MWD												Offset Well Error:	0.0 ft
Reference	Offset	Semi Major Axis		Distance		Minimum Separation		Separation Factor		Warning				
Measured Depth (ft)	Vertical Depth (ft)	Measured Depth (ft)	Vertical Depth (ft)	Reference (ft)	Offset (ft)	Highside Toolface (°)	Offset Wellbore Centre +N/-S (ft)	+E/-W (ft)	Between Centres (ft)	Between Ellipses (ft)	Minimum Separation (ft)	Separation Factor		
0.0	0.0	1.0	1.0	0.0	0.0	-88.18	2.5	-80.0	80.1	80.1	0.00	N/A		
100.0	100.0	101.0	101.0	0.1	0.1	-88.18	2.5	-80.0	80.1	79.8	0.23	352.648		
166.3	166.3	167.3	167.3	0.3	0.3	-88.18	2.5	-80.0	80.1	79.5	0.53	152.433	CC	
200.0	200.0	200.0	200.0	0.3	0.3	-88.18	2.5	-80.0	80.1	79.4	0.67	118.734	ES	
300.0	300.0	298.2	298.2	0.6	0.5	-88.20	2.6	-81.7	81.8	80.7	1.11	73.671		
400.0	400.0	395.2	395.1	0.8	0.8	-88.25	2.6	-86.7	86.9	85.4	1.55	56.018		
500.0	500.0	491.8	491.3	1.0	1.0	-88.33	2.8	-94.9	95.4	93.4	2.02	47.274		
600.0	600.0	587.7	586.5	1.2	1.3	-88.41	2.9	-106.2	107.2	104.7	2.52	42.604		
700.0	700.0	683.3	681.1	1.5	1.6	-88.50	3.2	-120.7	122.3	119.3	3.05	40.070		
800.0	800.0	782.0	778.4	1.7	1.9	-88.57	3.4	-136.7	138.6	135.0	3.63	38.210		
900.0	900.0	880.7	875.7	1.9	2.3	-88.63	3.6	-152.8	154.9	150.7	4.21	36.781		
1,000.0	1,000.0	979.3	973.1	2.1	2.7	-88.68	3.9	-168.9	171.2	166.4	4.80	35.655		
1,100.0	1,100.0	1,078.0	1,070.4	2.4	3.0	-88.72	4.1	-185.0	187.5	182.1	5.40	34.750		

CC - Min centre to center distance or convergent point, SF - min separation factor, ES - min ellipse separation

Company:	Synergy Resources	Local Co-ordinate Reference:	Well SRC Gies D-15-22CHZ
Project:	SEC.15-T7N-R65W	TVD Reference:	WELL @ 4851.0ft (RKB - 13')
Reference Site:	SRC Gies Pad Sec.15-T7N-R65W	MD Reference:	WELL @ 4851.0ft (RKB - 13')
Site Error:	0.0ft	North Reference:	True
Reference Well:	SRC Gies D-15-22CHZ	Survey Calculation Method:	Minimum Curvature
Well Error:	0.0ft	Output errors are at	2.00 sigma
Reference Wellbore	Wellbore #1	Database:	landmark
Reference Design:	Plan #1 (5-7-14)	Offset TVD Reference:	Offset Datum

Offset Design													Offset Site Error:	0.0 ft
Survey Program: 0-MWD													Offset Well Error:	0.0 ft
Reference		Offset		Semi Major Axis			Distance							Warning
Measured Depth (ft)	Vertical Depth (ft)	Measured Depth (ft)	Vertical Depth (ft)	Reference (ft)	Offset (ft)	Highside Toolface (°)	Offset Wellbore Centre +N/-S (ft)	+E/-W (ft)	Between Centres (ft)	Between Ellipses (ft)	Minimum Separation (ft)	Separation Factor		
1,200.0	1,200.0	1,176.7	1,167.8	2.6	3.4	-88.75	4.4	-201.1	203.8	197.8	5.99	34.010		
1,300.0	1,300.0	1,275.3	1,265.1	2.8	3.8	-88.78	4.6	-217.2	220.1	213.6	6.59	33.395		
1,400.0	1,400.0	1,374.0	1,362.5	3.0	4.2	-88.80	4.9	-233.2	236.4	229.3	7.19	32.877		
1,500.0	1,500.0	1,472.9	1,460.1	3.2	4.5	4.61	5.1	-249.4	251.0	244.4	6.61	37.997		
1,600.0	1,599.8	1,572.3	1,558.1	3.4	4.9	4.67	5.4	-265.6	262.2	255.1	7.05	37.192		
1,700.0	1,699.6	1,671.8	1,656.3	3.7	5.3	4.76	5.6	-281.8	271.7	264.2	7.50	36.240		
1,800.0	1,799.4	1,771.4	1,754.5	3.9	5.7	4.85	5.9	-298.0	281.3	273.4	7.95	35.379		
1,900.0	1,899.1	1,870.9	1,852.7	4.1	6.1	4.93	6.1	-314.2	290.9	282.5	8.41	34.599		
2,000.0	1,998.9	1,970.4	1,950.9	4.3	6.5	5.00	6.3	-330.5	300.5	291.6	8.87	33.889		
2,100.0	2,098.7	2,070.0	2,049.1	4.6	6.8	5.08	6.6	-346.7	310.1	300.7	9.33	33.240		
2,200.0	2,198.4	2,169.5	2,147.3	4.8	7.2	5.14	6.8	-362.9	319.7	309.9	9.79	32.646		
2,300.0	2,298.2	2,269.0	2,245.6	5.0	7.6	5.21	7.1	-379.1	329.2	319.0	10.26	32.101		
2,400.0	2,398.0	2,368.6	2,343.8	5.3	8.0	5.27	7.3	-395.4	338.8	328.1	10.72	31.598		
2,500.0	2,497.8	2,468.1	2,442.0	5.5	8.4	5.32	7.6	-411.6	348.4	337.2	11.19	31.133		
2,600.0	2,597.5	2,567.7	2,540.2	5.7	8.8	5.38	7.8	-427.8	358.0	346.3	11.66	30.703		
2,700.0	2,697.3	2,667.2	2,638.4	6.0	9.1	5.43	8.1	-444.0	367.6	355.4	12.13	30.304		
2,800.0	2,797.1	2,766.7	2,736.6	6.2	9.5	5.47	8.3	-460.3	377.2	364.6	12.60	29.931		
2,900.0	2,896.8	2,866.3	2,834.8	6.5	9.9	5.52	8.6	-476.5	386.7	373.7	13.07	29.584		
3,000.0	2,996.6	2,965.8	2,933.0	6.7	10.3	5.56	8.8	-492.7	396.3	382.8	13.55	29.260		
3,100.0	3,096.4	3,065.4	3,031.2	7.0	10.7	5.61	9.0	-508.9	405.9	391.9	14.02	28.956		
3,200.0	3,196.1	3,164.9	3,129.4	7.2	11.1	5.64	9.3	-525.2	415.5	401.0	14.49	28.671		
3,300.0	3,295.9	3,264.4	3,227.6	7.5	11.4	5.68	9.5	-541.4	425.1	410.1	14.97	28.402		
3,400.0	3,395.7	3,364.0	3,325.8	7.7	11.8	5.72	9.8	-557.6	434.7	419.2	15.44	28.149		
3,500.0	3,495.4	3,463.5	3,424.0	8.0	12.2	5.75	10.0	-573.8	444.3	428.3	15.92	27.911		
3,600.0	3,595.2	3,563.1	3,522.2	8.2	12.6	5.79	10.3	-590.1	453.8	437.4	16.39	27.685		
3,700.0	3,695.0	3,662.6	3,620.5	8.5	13.0	5.82	10.5	-606.3	463.4	446.6	16.87	27.472		
3,800.0	3,794.7	3,762.1	3,718.7	8.7	13.4	5.85	10.8	-622.5	473.0	455.7	17.35	27.270		
3,900.0	3,894.6	3,861.5	3,816.7	8.9	13.8	5.88	11.0	-638.7	484.0	466.2	17.78	27.217		
4,000.0	3,994.6	3,960.5	3,914.4	9.1	14.1	5.88	11.3	-654.9	498.4	480.2	18.18	27.419		
4,100.0	4,094.6	4,059.1	4,011.7	9.3	14.5	-87.60	11.5	-670.9	514.7	496.0	18.62	27.637		
4,200.0	4,194.6	4,157.8	4,109.0	9.5	14.9	-87.64	11.7	-687.0	531.0	511.9	19.08	27.830		
4,300.0	4,294.6	4,256.5	4,206.4	9.7	15.3	-87.69	12.0	-703.1	547.3	527.7	19.54	28.013		
4,400.0	4,394.6	4,355.1	4,303.7	9.9	15.7	-87.73	12.2	-719.2	563.6	543.6	19.99	28.186		
4,500.0	4,494.6	4,453.8	4,401.1	10.1	16.0	-87.77	12.5	-735.3	579.9	559.4	20.45	28.351		
4,600.0	4,594.6	4,552.5	4,498.4	10.3	16.4	-87.81	12.7	-751.4	596.2	575.2	20.91	28.508		
4,700.0	4,694.6	4,651.1	4,595.7	10.5	16.8	-87.84	13.0	-767.4	612.5	591.1	21.37	28.657		
4,800.0	4,794.6	4,749.8	4,693.1	10.8	17.2	-87.87	13.2	-783.5	628.8	606.9	21.83	28.800		
4,900.0	4,894.6	4,848.4	4,790.4	11.0	17.6	-87.91	13.5	-799.6	645.1	622.8	22.29	28.935		
5,000.0	4,994.6	4,947.1	4,887.8	11.2	18.0	-87.94	13.7	-815.7	661.4	638.6	22.75	29.065		
5,100.0	5,094.6	5,045.8	4,985.1	11.4	18.3	-87.97	13.9	-831.8	677.7	654.4	23.22	29.189		
5,200.0	5,194.6	5,144.4	5,082.5	11.6	18.7	-87.99	14.2	-847.9	694.0	670.3	23.68	29.308		
5,300.0	5,294.6	5,243.1	5,179.8	11.8	19.1	-88.02	14.4	-863.9	710.3	686.1	24.14	29.421		
5,400.0	5,394.6	5,341.8	5,277.1	12.0	19.5	-88.04	14.7	-880.0	726.6	701.9	24.60	29.530		
5,500.0	5,494.6	5,440.4	5,374.5	12.2	19.9	-88.07	14.9	-896.1	742.9	717.8	25.07	29.635		
5,600.0	5,594.6	5,539.1	5,471.8	12.4	20.2	-88.09	15.2	-912.2	759.2	733.6	25.53	29.735		
5,700.0	5,694.6	5,637.7	5,569.2	12.6	20.6	-88.11	15.4	-928.3	775.5	749.5	25.99	29.831		
5,800.0	5,794.6	5,736.4	5,666.5	12.9	21.0	-88.13	15.6	-944.3	791.8	765.3	26.46	29.924		
5,900.0	5,894.6	5,835.1	5,763.9	13.1	21.4	-88.15	15.9	-960.4	808.1	781.1	26.92	30.013		
6,000.0	5,994.6	5,933.7	5,861.2	13.3	21.8	-88.17	16.1	-976.5	824.4	797.0	27.39	30.098		
6,100.0	6,094.6	6,032.4	5,958.5	13.5	22.2	-88.19	16.4	-992.6	840.7	812.8	27.85	30.181		
6,200.0	6,194.6	6,141.0	6,065.7	13.7	22.6	-88.21	16.6	-1,010.1	856.8	828.5	28.33	30.240		
6,300.0	6,294.6	6,282.9	6,206.5	13.9	22.9	-88.23	16.9	-1,028.1	869.5	840.7	28.84	30.154		

CC - Min centre to center distance or convergent point, SF - min separation factor, ES - min ellipse separation

Company:	Synergy Resources	Local Co-ordinate Reference:	Well SRC Gies D-15-22CHZ
Project:	SEC.15-T7N-R65W	TVD Reference:	WELL @ 4851.0ft (RKB - 13')
Reference Site:	SRC Gies Pad Sec.15-T7N-R65W	MD Reference:	WELL @ 4851.0ft (RKB - 13')
Site Error:	0.0ft	North Reference:	True
Reference Well:	SRC Gies D-15-22CHZ	Survey Calculation Method:	Minimum Curvature
Well Error:	0.0ft	Output errors are at	2.00 sigma
Reference Wellbore	Wellbore #1	Database:	landmark
Reference Design:	Plan #1 (5-7-14)	Offset TVD Reference:	Offset Datum

Offset Design												Offset Site Error:	0.0 ft
Survey Program: 0-MWD												Offset Well Error:	0.0 ft
Reference		Offset		Semi Major Axis			Distance						
Measured Depth (ft)	Vertical Depth (ft)	Measured Depth (ft)	Vertical Depth (ft)	Reference (ft)	Offset (ft)	Highside Toolface (°)	Offset Wellbore Centre +N/-S (ft)	+E/-W (ft)	Between Centres (ft)	Between Ellipses (ft)	Minimum Separation (ft)	Separation Factor	Warning
6,400.0	6,394.6	6,426.4	6,349.5	14.1	23.2	-88.24	17.1	-1,039.3	877.3	848.0	29.31	29.934	
6,500.0	6,494.6	6,570.6	6,493.6	14.4	23.4	-88.25	17.1	-1,043.2	880.0	850.3	29.77	29.562	
6,600.0	6,594.6	6,672.5	6,595.6	14.6	23.5	-88.25	17.1	-1,043.2	880.0	849.9	30.17	29.170	
6,700.0	6,694.6	6,772.5	6,695.6	14.8	23.7	-88.25	17.1	-1,043.2	880.0	849.5	30.57	28.789	
6,800.0	6,794.6	6,872.6	6,795.7	15.0	23.8	91.97	17.1	-1,043.2	880.0	849.1	30.96	28.421	
6,900.0	6,894.2	6,977.0	6,899.6	15.2	23.9	91.94	9.3	-1,043.2	880.0	848.7	31.33	28.087	
7,000.0	6,992.0	7,081.2	7,001.3	15.4	24.0	91.87	-13.6	-1,043.1	880.0	848.3	31.70	27.762	
7,100.0	7,085.8	7,185.3	7,098.3	15.6	24.2	91.77	-50.8	-1,043.0	879.9	847.8	32.10	27.408	
7,200.0	7,174.0	7,289.1	7,188.7	15.8	24.3	91.62	-101.6	-1,042.8	879.9	847.3	32.60	26.987	
7,300.0	7,254.8	7,392.4	7,270.6	16.1	24.5	91.45	-164.6	-1,042.5	879.8	846.5	33.26	26.456	
7,400.0	7,326.6	7,495.3	7,342.2	16.5	24.8	91.24	-238.4	-1,042.2	879.7	845.6	34.13	25.778	
7,500.0	7,388.0	7,597.8	7,402.2	17.1	25.1	91.02	-321.2	-1,041.9	879.7	844.4	35.27	24.940	
7,600.0	7,437.9	7,699.7	7,449.7	17.8	25.5	90.77	-411.3	-1,041.6	879.6	842.9	36.72	23.953	
7,700.0	7,475.2	7,801.0	7,483.7	18.7	26.1	90.51	-506.6	-1,041.2	879.6	841.1	38.49	22.852	
7,800.0	7,499.3	7,901.7	7,503.8	19.7	26.8	90.24	-605.2	-1,040.9	879.5	839.0	40.55	21.691	
7,871.3	7,508.0	7,973.1	7,509.6	20.5	27.3	90.04	-676.4	-1,040.6	879.5	837.3	42.19	20.849	
7,900.0	7,509.6	8,001.8	7,510.0	20.9	27.6	89.96	-705.1	-1,040.5	879.5	836.7	42.86	20.523	
8,000.0	7,510.0	8,101.8	7,510.0	22.1	28.5	89.93	-805.1	-1,040.1	879.5	834.2	45.35	19.394	
8,100.0	7,510.0	8,201.8	7,510.0	23.5	29.5	89.93	-905.1	-1,039.7	879.5	831.5	48.02	18.314	
8,200.0	7,510.0	8,301.8	7,510.0	24.9	30.6	89.93	-1,005.1	-1,039.4	879.5	828.7	50.85	17.297	
8,300.0	7,510.0	8,401.8	7,510.0	26.4	31.9	89.93	-1,105.1	-1,039.0	879.5	825.7	53.80	16.348	
8,400.0	7,510.0	8,501.8	7,510.0	27.9	33.1	89.93	-1,205.1	-1,038.6	879.5	822.7	56.86	15.469	
8,500.0	7,510.0	8,601.8	7,510.0	29.5	34.5	89.93	-1,305.1	-1,038.2	879.5	819.5	60.01	14.657	
8,600.0	7,510.0	8,701.8	7,510.0	31.1	35.9	89.93	-1,405.1	-1,037.8	879.5	816.3	63.24	13.909	
8,700.0	7,510.0	8,801.8	7,510.0	32.8	37.3	89.93	-1,505.1	-1,037.5	879.6	813.0	66.53	13.220	
8,800.0	7,510.0	8,901.8	7,510.0	34.5	38.8	89.93	-1,605.1	-1,037.1	879.6	809.7	69.88	12.586	
8,900.0	7,510.0	9,001.8	7,510.0	36.2	40.4	89.93	-1,705.1	-1,036.7	879.6	806.3	73.28	12.003	
9,000.0	7,510.0	9,101.8	7,510.0	37.9	41.9	89.93	-1,805.1	-1,036.3	879.6	802.8	76.72	11.464	
9,100.0	7,510.0	9,201.8	7,510.0	39.7	43.5	89.93	-1,905.1	-1,035.9	879.6	799.4	80.20	10.967	
9,200.0	7,510.0	9,301.8	7,510.0	41.4	45.2	89.93	-2,005.1	-1,035.6	879.6	795.9	83.71	10.507	
9,300.0	7,510.0	9,401.8	7,510.0	43.2	46.8	89.93	-2,105.1	-1,035.2	879.6	792.3	87.25	10.081	
9,400.0	7,510.0	9,501.8	7,510.0	45.0	48.5	89.93	-2,205.1	-1,034.8	879.6	788.8	90.82	9.685	
9,500.0	7,510.0	9,601.8	7,510.0	46.8	50.2	89.93	-2,305.1	-1,034.4	879.6	785.2	94.41	9.317	
9,600.0	7,510.0	9,701.8	7,510.0	48.6	51.9	89.93	-2,405.1	-1,034.1	879.6	781.6	98.02	8.974	
9,700.0	7,510.0	9,801.8	7,510.0	50.4	53.6	89.93	-2,505.1	-1,033.7	879.6	777.9	101.64	8.654	
9,800.0	7,510.0	9,901.8	7,510.0	52.3	55.3	89.93	-2,605.1	-1,033.3	879.6	774.3	105.28	8.355	
9,900.0	7,510.0	10,001.8	7,510.0	54.1	57.1	89.93	-2,705.1	-1,032.9	879.6	770.6	108.94	8.074	
10,000.0	7,510.0	10,101.8	7,510.0	55.9	58.8	89.93	-2,805.1	-1,032.5	879.6	767.0	112.61	7.811	
10,100.0	7,510.0	10,201.8	7,510.0	57.8	60.6	89.93	-2,905.1	-1,032.2	879.6	763.3	116.29	7.564	
10,200.0	7,510.0	10,301.8	7,510.0	59.6	62.4	89.93	-3,005.1	-1,031.8	879.6	759.6	119.98	7.331	
10,300.0	7,510.0	10,401.8	7,510.0	61.5	64.2	89.93	-3,105.1	-1,031.4	879.6	755.9	123.68	7.112	
10,400.0	7,510.0	10,501.8	7,510.0	63.4	66.0	89.93	-3,205.1	-1,031.0	879.6	752.2	127.39	6.905	
10,500.0	7,510.0	10,601.8	7,510.0	65.2	67.8	89.93	-3,305.1	-1,030.7	879.6	748.5	131.11	6.709	
10,600.0	7,510.0	10,701.8	7,510.0	67.1	69.6	89.93	-3,405.1	-1,030.3	879.6	744.8	134.83	6.524	
10,700.0	7,510.0	10,801.8	7,510.0	68.9	71.4	89.93	-3,505.1	-1,029.9	879.6	741.0	138.56	6.348	
10,800.0	7,510.0	10,901.8	7,510.0	70.8	73.2	89.93	-3,605.1	-1,029.5	879.6	737.3	142.30	6.181	
10,900.0	7,510.0	11,001.8	7,510.0	72.7	75.0	89.93	-3,705.1	-1,029.1	879.6	733.6	146.05	6.023	
11,000.0	7,510.0	11,101.8	7,510.0	74.6	76.9	89.93	-3,805.1	-1,028.8	879.6	729.8	149.80	5.872	
11,100.0	7,510.0	11,201.8	7,510.0	76.5	78.7	89.93	-3,905.1	-1,028.4	879.6	726.1	153.55	5.729	
11,200.0	7,510.0	11,301.8	7,510.0	78.3	80.5	89.93	-4,005.1	-1,028.0	879.6	722.3	157.31	5.592	
11,300.0	7,510.0	11,401.8	7,510.0	80.2	82.4	89.93	-4,105.1	-1,027.6	879.6	718.6	161.07	5.461	
11,400.0	7,510.0	11,501.8	7,510.0	82.1	84.2	89.93	-4,205.1	-1,027.3	879.6	714.8	164.84	5.336	

CC - Min centre to center distance or convergent point, SF - min separation factor, ES - min ellipse separation

Company:	Synergy Resources	Local Co-ordinate Reference:	Well SRC Gies D-15-22CHZ
Project:	SEC.15-T7N-R65W	TVD Reference:	WELL @ 4851.0ft (RKB - 13')
Reference Site:	SRC Gies Pad Sec.15-T7N-R65W	MD Reference:	WELL @ 4851.0ft (RKB - 13')
Site Error:	0.0ft	North Reference:	True
Reference Well:	SRC Gies D-15-22CHZ	Survey Calculation Method:	Minimum Curvature
Well Error:	0.0ft	Output errors are at	2.00 sigma
Reference Wellbore	Wellbore #1	Database:	landmark
Reference Design:	Plan #1 (5-7-14)	Offset TVD Reference:	Offset Datum

Offset Design SRC Gies Pad Sec.15-T7N-R65W - SRC Gies 34-15-22CHZ - Wellbore #1 - Plan #1 (5-6-14)												Offset Site Error:	0.0 ft
Survey Program: 0-MWD												Offset Well Error:	0.0 ft
Reference		Offset		Semi Major Axis			Distance						
Measured Depth (ft)	Vertical Depth (ft)	Measured Depth (ft)	Vertical Depth (ft)	Reference (ft)	Offset (ft)	Highside Toolface (°)	Offset Wellbore Centre +N/-S (ft)	+E/-W (ft)	Between Centres (ft)	Between Ellipses (ft)	Minimum Separation (ft)	Separation Factor	Warning
11,500.0	7,510.0	11,601.8	7,510.0	84.0	86.1	89.93	-4,305.1	-1,026.9	879.6	711.0	168.61	5.217	
11,600.0	7,510.0	11,701.8	7,510.0	85.9	87.9	89.93	-4,405.1	-1,026.5	879.6	707.2	172.39	5.103	
11,700.0	7,510.0	11,801.8	7,510.0	87.8	89.8	89.93	-4,505.1	-1,026.1	879.6	703.5	176.16	4.993	
11,700.1	7,510.0	11,801.9	7,510.0	87.8	89.8	89.93	-4,505.2	-1,026.1	879.6	703.5	176.17	4.993	
11,715.1	7,510.0	11,810.0	7,510.0	88.1	90.0	89.93	-4,513.2	-1,026.1	879.7	703.1	176.60	4.981 SF	

Company:	Synergy Resources	Local Co-ordinate Reference:	Well SRC Gies D-15-22CHZ
Project:	SEC.15-T7N-R65W	TVD Reference:	WELL @ 4851.0ft (RKB - 13')
Reference Site:	SRC Gies Pad Sec.15-T7N-R65W	MD Reference:	WELL @ 4851.0ft (RKB - 13')
Site Error:	0.0ft	North Reference:	True
Reference Well:	SRC Gies D-15-22CHZ	Survey Calculation Method:	Minimum Curvature
Well Error:	0.0ft	Output errors are at	2.00 sigma
Reference Wellbore	Wellbore #1	Database:	landmark
Reference Design:	Plan #1 (5-7-14)	Offset TVD Reference:	Offset Datum

Offset Design													Offset Site Error:	0.0 ft
Survey Program: 0-MWD													Offset Well Error:	0.0 ft
Reference		Offset		Semi Major Axis			Distance							Warning
Measured Depth (ft)	Vertical Depth (ft)	Measured Depth (ft)	Vertical Depth (ft)	Reference (ft)	Offset (ft)	Highside Toolface (°)	Offset Wellbore Centre +N/-S (ft)	+E/-W (ft)	Between Centres (ft)	Between Ellipses (ft)	Minimum Separation (ft)	Separation Factor		
0.0	0.0	0.0	0.0	0.0	0.0	-88.26	1.8	-60.0	60.0					
100.0	100.0	100.0	100.0	0.1	0.1	-88.26	1.8	-60.0	60.0	59.8	0.22	267.119		
200.0	200.0	200.0	200.0	0.3	0.3	-88.26	1.8	-60.0	60.0	59.4	0.67	89.040		
300.0	300.0	300.0	300.0	0.6	0.6	-88.26	1.8	-60.0	60.0	58.9	1.12	53.424		
400.0	400.0	400.0	400.0	0.8	0.8	-88.26	1.8	-60.0	60.0	58.5	1.57	38.160 CC, ES		
500.0	500.0	497.9	497.9	1.0	1.0	-88.29	1.8	-61.7	61.7	59.7	2.01	30.767		
600.0	600.0	595.6	595.4	1.2	1.2	-88.37	1.9	-66.7	66.9	64.4	2.44	27.391		
700.0	700.0	692.8	692.3	1.5	1.4	-88.48	2.0	-75.0	75.4	72.5	2.90	26.028		
800.0	800.0	789.4	788.2	1.7	1.7	-88.59	2.1	-86.4	87.3	83.9	3.38	25.824		
900.0	900.0	888.3	886.1	1.9	2.0	-88.69	2.3	-100.0	101.0	97.1	3.90	25.918		
1,000.0	1,000.0	987.3	984.2	2.1	2.3	-88.77	2.4	-113.6	114.7	110.3	4.43	25.908		
1,100.0	1,100.0	1,086.4	1,082.4	2.4	2.6	-88.83	2.6	-127.2	128.5	123.5	4.97	25.853		
1,200.0	1,200.0	1,185.4	1,180.5	2.6	2.9	-88.88	2.8	-140.8	142.2	136.7	5.52	25.781		
1,300.0	1,300.0	1,284.5	1,278.6	2.8	3.3	-88.92	2.9	-154.4	155.9	149.9	6.07	25.703		
1,400.0	1,400.0	1,383.5	1,376.7	3.0	3.6	-88.95	3.1	-168.0	169.7	163.1	6.62	25.627		
1,500.0	1,500.0	1,482.8	1,475.0	3.2	3.9	4.47	3.2	-181.7	181.7	175.2	6.49	27.987		
1,600.0	1,599.8	1,582.4	1,573.7	3.4	4.3	4.55	3.4	-195.4	190.2	183.3	6.92	27.480		
1,700.0	1,699.6	1,682.2	1,672.5	3.7	4.6	4.67	3.5	-209.1	197.2	189.9	7.36	26.785		
1,800.0	1,799.4	1,781.9	1,771.3	3.9	4.9	4.79	3.7	-222.8	204.2	196.4	7.81	26.155		
1,900.0	1,899.1	1,881.7	1,870.1	4.1	5.3	4.90	3.9	-236.5	211.2	203.0	8.26	25.583		
2,000.0	1,998.9	1,981.4	1,968.9	4.3	5.6	5.00	4.0	-250.2	218.2	209.5	8.71	25.062		
2,100.0	2,098.7	2,081.2	2,067.7	4.6	6.0	5.09	4.2	-263.9	225.2	216.1	9.16	24.585		
2,200.0	2,198.4	2,180.9	2,166.6	4.8	6.3	5.18	4.3	-277.6	232.2	222.6	9.62	24.148		
2,300.0	2,298.2	2,280.7	2,265.4	5.0	6.6	5.27	4.5	-291.3	239.2	229.1	10.07	23.747		
2,400.0	2,398.0	2,380.5	2,364.2	5.3	7.0	5.34	4.6	-305.0	246.2	235.7	10.53	23.377		
2,500.0	2,497.8	2,480.2	2,463.0	5.5	7.3	5.42	4.8	-318.7	253.2	242.2	10.99	23.034		
2,600.0	2,597.5	2,580.0	2,561.8	5.7	7.7	5.49	5.0	-332.4	260.2	248.8	11.45	22.717		
2,700.0	2,697.3	2,679.7	2,660.6	6.0	8.0	5.56	5.1	-346.1	267.2	255.3	11.92	22.423		
2,800.0	2,797.1	2,779.5	2,759.4	6.2	8.4	5.62	5.3	-359.8	274.2	261.8	12.38	22.148		
2,900.0	2,896.8	2,879.2	2,858.2	6.5	8.7	5.68	5.4	-373.5	281.2	268.4	12.85	21.892		
3,000.0	2,996.6	2,979.0	2,957.0	6.7	9.1	5.74	5.6	-387.2	288.2	274.9	13.31	21.653		
3,100.0	3,096.4	3,078.7	3,055.8	7.0	9.4	5.79	5.8	-400.9	295.2	281.4	13.78	21.428		
3,200.0	3,196.1	3,178.5	3,154.6	7.2	9.7	5.84	5.9	-414.6	302.2	288.0	14.24	21.217		
3,300.0	3,295.9	3,278.2	3,253.4	7.5	10.1	5.89	6.1	-428.3	309.2	294.5	14.71	21.019		
3,400.0	3,395.7	3,378.0	3,352.3	7.7	10.4	5.94	6.2	-442.0	316.2	301.0	15.18	20.833		
3,500.0	3,495.4	3,477.8	3,451.1	8.0	10.8	5.99	6.4	-455.7	323.2	307.6	15.65	20.656		
3,600.0	3,595.2	3,577.5	3,549.9	8.2	11.1	6.03	6.5	-469.4	330.2	314.1	16.12	20.490		
3,700.0	3,695.0	3,677.3	3,648.7	8.5	11.5	6.07	6.7	-483.1	337.2	320.6	16.58	20.332		
3,800.0	3,794.7	3,777.0	3,747.5	8.7	11.8	6.11	6.9	-496.8	344.2	327.2	17.05	20.183		
3,900.0	3,894.6	3,876.7	3,846.2	8.9	12.2	6.14	7.0	-510.5	352.6	335.1	17.49	20.158		
4,000.0	3,994.6	3,976.0	3,944.5	9.1	12.5	6.12	7.2	-524.2	364.4	346.5	17.89	20.371		
4,100.0	4,094.6	4,075.0	4,042.7	9.3	12.8	-87.38	7.3	-537.8	378.1	359.8	18.33	20.630		
4,200.0	4,194.6	4,174.1	4,140.8	9.5	13.2	-87.45	7.5	-551.4	391.9	373.1	18.78	20.867		
4,300.0	4,294.6	4,273.1	4,238.9	9.7	13.5	-87.51	7.6	-565.0	405.6	386.4	19.23	21.092		
4,400.0	4,394.6	4,372.2	4,337.0	9.9	13.9	-87.57	7.8	-578.6	419.3	399.7	19.68	21.305		
4,500.0	4,494.6	4,471.2	4,435.1	10.1	14.2	-87.63	8.0	-592.2	433.1	412.9	20.13	21.509		
4,600.0	4,594.6	4,570.3	4,533.2	10.3	14.6	-87.68	8.1	-605.8	446.8	426.2	20.59	21.702		
4,700.0	4,694.6	4,669.3	4,631.3	10.5	14.9	-87.73	8.3	-619.4	460.5	439.5	21.04	21.887		
4,800.0	4,794.6	4,768.4	4,729.4	10.8	15.2	-87.78	8.4	-633.0	474.3	452.8	21.50	22.064		
4,900.0	4,894.6	4,867.4	4,827.6	11.0	15.6	-87.82	8.6	-646.6	488.0	466.0	21.95	22.232		
5,000.0	4,994.6	4,966.5	4,925.7	11.2	15.9	-87.86	8.7	-660.2	501.7	479.3	22.41	22.394		
5,100.0	5,094.6	5,065.5	5,023.8	11.4	16.3	-87.90	8.9	-673.8	515.5	492.6	22.86	22.548		

CC - Min centre to center distance or convergent point, SF - min separation factor, ES - min ellipse separation

Company:	Synergy Resources	Local Co-ordinate Reference:	Well SRC Gies D-15-22CHZ
Project:	SEC.15-T7N-R65W	TVD Reference:	WELL @ 4851.0ft (RKB - 13')
Reference Site:	SRC Gies Pad Sec.15-T7N-R65W	MD Reference:	WELL @ 4851.0ft (RKB - 13')
Site Error:	0.0ft	North Reference:	True
Reference Well:	SRC Gies D-15-22CHZ	Survey Calculation Method:	Minimum Curvature
Well Error:	0.0ft	Output errors are at	2.00 sigma
Reference Wellbore	Wellbore #1	Database:	landmark
Reference Design:	Plan #1 (5-7-14)	Offset TVD Reference:	Offset Datum

Offset Design												Offset Site Error:	0.0 ft
Survey Program: 0-MWD												Offset Well Error:	0.0 ft
Reference		Offset		Semi Major Axis			Distance						
Measured Depth (ft)	Vertical Depth (ft)	Measured Depth (ft)	Vertical Depth (ft)	Reference (ft)	Offset (ft)	Highside Toolface (°)	Offset Wellbore Centre +N/-S (ft)	+E/-W (ft)	Between Centres (ft)	Between Ellipses (ft)	Minimum Separation (ft)	Separation Factor	Warning
5,200.0	5,194.6	5,164.6	5,121.9	11.6	16.6	-87.94	9.1	-687.4	529.2	505.9	23.32	22.696	
5,300.0	5,294.6	5,263.6	5,220.0	11.8	17.0	-87.97	9.2	-701.1	542.9	519.2	23.77	22.838	
5,400.0	5,394.6	5,362.7	5,318.1	12.0	17.3	-88.01	9.4	-714.7	556.7	532.4	24.23	22.974	
5,500.0	5,494.6	5,461.7	5,416.2	12.2	17.6	-88.04	9.5	-728.3	570.4	545.7	24.69	23.105	
5,600.0	5,594.6	5,560.8	5,514.3	12.4	18.0	-88.07	9.7	-741.9	584.1	559.0	25.14	23.231	
5,700.0	5,694.6	5,659.8	5,612.5	12.6	18.3	-88.10	9.8	-755.5	597.9	572.3	25.60	23.352	
5,800.0	5,794.6	5,758.9	5,710.6	12.9	18.7	-88.13	10.0	-769.1	611.6	585.5	26.06	23.469	
5,900.0	5,894.6	5,857.9	5,808.7	13.1	19.0	-88.15	10.2	-782.7	625.3	598.8	26.52	23.581	
6,000.0	5,994.6	5,957.1	5,906.9	13.3	19.4	-88.18	10.3	-796.3	639.1	612.1	26.98	23.689	
6,100.0	6,094.6	6,055.3	6,034.2	13.5	19.7	-88.21	10.5	-811.1	650.6	623.1	27.45	23.704	
6,200.0	6,194.6	6,214.6	6,163.2	13.7	19.9	-88.22	10.6	-820.1	657.6	629.7	27.89	23.577	
6,300.0	6,294.6	6,344.4	6,292.9	13.9	20.1	-88.23	10.6	-823.4	660.1	631.8	28.33	23.299	
6,400.0	6,394.6	6,446.0	6,394.6	14.1	20.2	-88.23	10.6	-823.4	660.1	631.4	28.74	22.970	
6,500.0	6,494.6	6,546.0	6,494.6	14.4	20.4	-88.23	10.6	-823.4	660.1	631.0	29.14	22.650	
6,600.0	6,594.6	6,648.1	6,596.5	14.6	20.5	-88.55	6.9	-823.4	660.0	630.5	29.55	22.337	
6,700.0	6,694.6	6,748.2	6,695.1	14.8	20.7	-90.03	-10.2	-823.3	659.7	629.8	29.93	22.040	
6,708.8	6,703.4	6,756.8	6,703.4	14.8	20.7	-90.21	-12.3	-823.3	659.7	629.8	29.97	22.017	
6,800.0	6,794.6	6,841.9	6,784.3	15.0	20.8	87.73	-38.5	-823.2	660.3	630.0	30.30	21.791	
6,900.0	6,894.2	6,929.7	6,864.0	15.2	21.0	84.83	-75.3	-823.1	662.8	632.1	30.66	21.616	
7,000.0	6,992.0	7,014.4	6,935.9	15.4	21.1	82.06	-119.8	-822.9	666.9	635.8	31.03	21.493	
7,100.0	7,085.8	7,100.0	7,002.9	15.6	21.3	79.37	-173.2	-822.7	672.2	640.8	31.42	21.397	
7,200.0	7,174.0	7,176.1	7,056.6	15.8	21.5	77.06	-227.0	-822.5	678.3	646.5	31.83	21.313	
7,300.0	7,254.8	7,250.0	7,103.1	16.1	21.8	74.96	-284.4	-822.3	684.9	652.6	32.30	21.203	
7,400.0	7,326.6	7,330.4	7,146.6	16.5	22.1	72.97	-352.0	-822.1	691.4	658.5	32.95	20.986	
7,500.0	7,388.0	7,400.0	7,178.0	17.1	22.5	71.41	-414.0	-821.8	697.6	663.9	33.75	20.667	
7,600.0	7,437.9	7,479.9	7,206.4	17.8	23.0	69.99	-488.7	-821.5	703.0	668.1	34.92	20.135	
7,700.0	7,475.2	7,550.0	7,224.3	18.7	23.5	68.97	-556.4	-821.3	707.5	671.2	36.35	19.462	
7,800.0	7,499.3	7,626.5	7,236.2	19.7	24.2	68.21	-632.0	-821.0	710.8	672.6	38.22	18.596	
7,900.0	7,509.6	7,700.2	7,240.0	20.9	24.9	67.78	-705.6	-820.7	712.7	672.3	40.42	17.633	
8,000.0	7,510.0	7,798.9	7,240.0	22.1	25.9	67.74	-804.2	-820.4	712.9	670.0	42.89	16.622	
8,100.0	7,510.0	7,898.9	7,240.0	23.5	27.1	67.74	-904.2	-820.0	712.9	667.5	45.43	15.691	
8,200.0	7,510.0	7,998.9	7,240.0	24.9	28.3	67.75	-1,004.2	-819.6	712.9	664.8	48.12	14.817	
8,300.0	7,510.0	8,098.9	7,240.0	26.4	29.7	67.75	-1,104.2	-819.3	712.9	662.0	50.91	14.003	
8,400.0	7,510.0	8,198.9	7,240.0	27.9	31.0	67.75	-1,204.2	-818.9	712.9	659.1	53.80	13.251	
8,500.0	7,510.0	8,298.9	7,240.0	29.5	32.5	67.75	-1,304.2	-818.5	712.9	656.2	56.78	12.557	
8,600.0	7,510.0	8,398.9	7,240.0	31.1	34.0	67.75	-1,404.2	-818.1	712.9	653.1	59.82	11.918	
8,700.0	7,510.0	8,498.9	7,240.0	32.8	35.5	67.75	-1,504.2	-817.8	712.9	650.0	62.92	11.330	
8,800.0	7,510.0	8,598.9	7,240.0	34.5	37.1	67.75	-1,604.2	-817.4	713.0	646.9	66.08	10.790	
8,900.0	7,510.0	8,698.9	7,240.0	36.2	38.7	67.75	-1,704.2	-817.0	713.0	643.7	69.28	10.292	
9,000.0	7,510.0	8,798.9	7,240.0	37.9	40.4	67.75	-1,804.2	-816.6	713.0	640.5	72.51	9.832	
9,100.0	7,510.0	8,898.9	7,240.0	39.7	42.0	67.75	-1,904.2	-816.3	713.0	637.2	75.78	9.408	
9,200.0	7,510.0	8,998.9	7,240.0	41.4	43.7	67.75	-2,004.2	-815.9	713.0	633.9	79.08	9.016	
9,300.0	7,510.0	9,098.9	7,240.0	43.2	45.4	67.75	-2,104.2	-815.5	713.0	630.6	82.41	8.652	
9,400.0	7,510.0	9,198.9	7,240.0	45.0	47.1	67.75	-2,204.2	-815.1	713.0	627.2	85.75	8.314	
9,500.0	7,510.0	9,298.9	7,240.0	46.8	48.9	67.75	-2,304.2	-814.8	713.0	623.9	89.12	8.000	
9,600.0	7,510.0	9,398.9	7,240.0	48.6	50.6	67.75	-2,404.2	-814.4	713.0	620.5	92.51	7.708	
9,700.0	7,510.0	9,498.9	7,240.0	50.4	52.4	67.75	-2,504.2	-814.0	713.0	617.1	95.91	7.434	
9,800.0	7,510.0	9,598.9	7,240.0	52.3	54.2	67.75	-2,604.2	-813.7	713.0	613.7	99.32	7.179	
9,900.0	7,510.0	9,698.9	7,240.0	54.1	55.9	67.75	-2,704.2	-813.3	713.0	610.3	102.75	6.939	
10,000.0	7,510.0	9,798.9	7,240.0	55.9	57.7	67.75	-2,804.2	-812.9	713.0	606.8	106.19	6.714	
10,100.0	7,510.0	9,898.9	7,240.0	57.8	59.5	67.75	-2,904.2	-812.5	713.0	603.4	109.65	6.503	
10,200.0	7,510.0	9,998.9	7,240.0	59.6	61.3	67.75	-3,004.2	-812.2	713.1	599.9	113.11	6.304	

CC - Min centre to center distance or convergent point, SF - min separation factor, ES - min ellipse separation

Company:	Synergy Resources	Local Co-ordinate Reference:	Well SRC Gies D-15-22CHZ
Project:	SEC.15-T7N-R65W	TVD Reference:	WELL @ 4851.0ft (RKB - 13')
Reference Site:	SRC Gies Pad Sec.15-T7N-R65W	MD Reference:	WELL @ 4851.0ft (RKB - 13')
Site Error:	0.0ft	North Reference:	True
Reference Well:	SRC Gies D-15-22CHZ	Survey Calculation Method:	Minimum Curvature
Well Error:	0.0ft	Output errors are at	2.00 sigma
Reference Wellbore	Wellbore #1	Database:	landmark
Reference Design:	Plan #1 (5-7-14)	Offset TVD Reference:	Offset Datum

Offset Design SRC Gies Pad Sec.15-T7N-R65W - SRC Gies 34-15-22NHZ - Wellbore #1 - Plan #1 (5-7-14)												Offset Site Error:	0.0 ft
Survey Program: 0-MWD												Offset Well Error:	0.0 ft
Reference		Offset		Semi Major Axis			Distance						
Measured Depth (ft)	Vertical Depth (ft)	Measured Depth (ft)	Vertical Depth (ft)	Reference (ft)	Offset (ft)	Highside Toolface (°)	Offset Wellbore Centre +N/-S (ft)	+E/-W (ft)	Between Centres (ft)	Between Ellipses (ft)	Minimum Separation (ft)	Separation Factor	Warning
10,300.0	7,510.0	10,098.9	7,240.0	61.5	63.2	67.75	-3,104.2	-811.8	713.1	596.5	116.58	6.117	
10,400.0	7,510.0	10,198.9	7,240.0	63.4	65.0	67.75	-3,204.2	-811.4	713.1	593.0	120.05	5.940	
10,500.0	7,510.0	10,298.9	7,240.0	65.2	66.8	67.75	-3,304.2	-811.0	713.1	589.5	123.54	5.772	
10,600.0	7,510.0	10,398.9	7,240.0	67.1	68.6	67.75	-3,404.2	-810.7	713.1	586.1	127.03	5.613	
10,700.0	7,510.0	10,498.9	7,240.0	68.9	70.5	67.75	-3,504.2	-810.3	713.1	582.6	130.53	5.463	
10,800.0	7,510.0	10,598.9	7,240.0	70.8	72.3	67.75	-3,604.2	-809.9	713.1	579.1	134.03	5.320	
10,900.0	7,510.0	10,698.9	7,240.0	72.7	74.2	67.75	-3,704.2	-809.5	713.1	575.6	137.54	5.185	
11,000.0	7,510.0	10,798.9	7,240.0	74.6	76.0	67.75	-3,804.2	-809.2	713.1	572.1	141.06	5.055	
11,100.0	7,510.0	10,898.9	7,240.0	76.5	77.9	67.75	-3,904.2	-808.8	713.1	568.5	144.57	4.933	
11,200.0	7,510.0	10,998.9	7,240.0	78.3	79.7	67.75	-4,004.2	-808.4	713.1	565.0	148.10	4.815	
11,300.0	7,510.0	11,098.9	7,240.0	80.2	81.6	67.75	-4,104.2	-808.1	713.1	561.5	151.62	4.703	
11,400.0	7,510.0	11,198.9	7,240.0	82.1	83.5	67.75	-4,204.2	-807.7	713.1	558.0	155.15	4.596	
11,500.0	7,510.0	11,298.9	7,240.0	84.0	85.3	67.75	-4,304.2	-807.3	713.1	554.5	158.69	4.494	
11,600.0	7,510.0	11,398.9	7,240.0	85.9	87.2	67.75	-4,404.2	-806.9	713.2	550.9	162.23	4.396	
11,700.0	7,510.0	11,498.9	7,240.0	87.8	89.1	67.75	-4,504.2	-806.6	713.2	547.4	165.77	4.302	
11,701.9	7,510.0	11,500.7	7,240.0	87.8	89.1	67.75	-4,506.1	-806.6	713.2	547.3	165.83	4.301	
11,715.1	7,510.0	11,509.0	7,240.0	88.1	89.3	67.75	-4,514.3	-806.5	713.2	547.0	166.21	4.291 SF	

Company:	Synergy Resources	Local Co-ordinate Reference:	Well SRC Gies D-15-22CHZ
Project:	SEC.15-T7N-R65W	TVD Reference:	WELL @ 4851.0ft (RKB - 13')
Reference Site:	SRC Gies Pad Sec.15-T7N-R65W	MD Reference:	WELL @ 4851.0ft (RKB - 13')
Site Error:	0.0ft	North Reference:	True
Reference Well:	SRC Gies D-15-22CHZ	Survey Calculation Method:	Minimum Curvature
Well Error:	0.0ft	Output errors are at	2.00 sigma
Reference Wellbore	Wellbore #1	Database:	landmark
Reference Design:	Plan #1 (5-7-14)	Offset TVD Reference:	Offset Datum

Offset Design												Offset Site Error:	0.0ft
Survey Program: 0-MWD												Offset Well Error:	0.0ft
Reference		Offset		Semi Major Axis			Distance						
Measured Depth (ft)	Vertical Depth (ft)	Measured Depth (ft)	Vertical Depth (ft)	Reference (ft)	Offset (ft)	Highside Toolface (°)	Offset Wellbore Centre +N/-S (ft)	+E/-W (ft)	Between Centres (ft)	Between Ellipses (ft)	Minimum Separation (ft)	Separation Factor	Warning
0.0	0.0	0.0	0.0	0.0	0.0	91.56	-1.1	40.0	40.0				
100.0	100.0	100.0	100.0	0.1	0.1	91.56	-1.1	40.0	40.0	39.8	0.22	178.063	
200.0	200.0	200.0	200.0	0.3	0.3	91.56	-1.1	40.0	40.0	39.3	0.67	59.354	
300.0	300.0	300.0	300.0	0.6	0.6	91.56	-1.1	40.0	40.0	38.9	1.12	35.613	
400.0	400.0	400.0	400.0	0.8	0.8	91.56	-1.1	40.0	40.0	38.4	1.57	25.438	
500.0	500.0	500.0	500.0	1.0	1.0	91.56	-1.1	40.0	40.0	38.0	2.02	19.785	
600.0	600.0	600.0	600.0	1.2	1.2	91.56	-1.1	40.0	40.0	37.6	2.47	16.188	
700.0	700.0	700.0	700.0	1.5	1.5	91.56	-1.1	40.0	40.0	37.1	2.92	13.697	
800.0	800.0	800.0	800.0	1.7	1.7	91.56	-1.1	40.0	40.0	36.7	3.37	11.871 CC, ES	
900.0	900.0	898.6	898.6	1.9	1.9	91.56	-1.3	41.7	41.7	37.9	3.80	10.972	
1,000.0	1,000.0	996.9	996.8	2.1	2.1	92.11	-1.7	46.7	46.9	42.7	4.23	11.082	
1,100.0	1,100.0	1,096.1	1,095.7	2.4	2.3	92.58	-2.4	54.4	54.7	50.0	4.67	11.697	
1,200.0	1,200.0	1,195.8	1,195.0	2.6	2.5	92.93	-3.2	62.3	62.6	57.5	5.13	12.213	
1,300.0	1,300.0	1,295.5	1,294.4	2.8	2.8	93.21	-3.9	70.2	70.6	65.0	5.59	12.629	
1,400.0	1,400.0	1,395.2	1,393.8	3.0	3.0	93.42	-4.7	78.1	78.5	72.5	6.05	12.970	
1,500.0	1,500.0	1,494.7	1,493.0	3.2	3.3	-173.08	-5.4	86.0	88.2	81.8	6.39	13.798	
1,600.0	1,599.8	1,593.8	1,591.8	3.4	3.5	-173.26	-6.2	93.9	101.3	94.5	6.80	14.902	
1,700.0	1,699.6	1,692.7	1,690.4	3.7	3.8	-173.51	-6.9	101.7	116.0	108.8	7.22	16.073	
1,800.0	1,799.4	1,791.7	1,789.0	3.9	4.0	-173.71	-7.6	109.5	130.6	123.0	7.64	17.106	
1,900.0	1,899.1	1,890.6	1,887.6	4.1	4.3	-173.86	-8.4	117.4	145.3	137.3	8.06	18.023	
2,000.0	1,998.9	1,989.5	1,986.2	4.3	4.5	-173.99	-9.1	125.2	160.0	151.5	8.49	18.840	
2,100.0	2,098.7	2,088.4	2,084.8	4.6	4.8	-174.09	-9.8	133.1	174.7	165.7	8.92	19.572	
2,200.0	2,198.4	2,187.3	2,183.4	4.8	5.0	-174.18	-10.6	140.9	189.3	180.0	9.36	20.231	
2,300.0	2,298.2	2,286.2	2,282.0	5.0	5.3	-174.26	-11.3	148.7	204.0	194.2	9.79	20.827	
2,400.0	2,398.0	2,385.2	2,380.6	5.3	5.6	-174.33	-12.0	156.6	218.7	208.4	10.23	21.369	
2,500.0	2,497.8	2,484.1	2,479.2	5.5	5.8	-174.38	-12.8	164.4	233.3	222.7	10.67	21.862	
2,600.0	2,597.5	2,583.0	2,577.8	5.7	6.1	-174.43	-13.5	172.2	248.0	236.9	11.12	22.313	
2,700.0	2,697.3	2,681.9	2,676.4	6.0	6.3	-174.48	-14.3	180.1	262.7	251.1	11.56	22.728	
2,800.0	2,797.1	2,780.8	2,775.0	6.2	6.6	-174.52	-15.0	187.9	277.4	265.4	12.00	23.109	
2,900.0	2,896.8	2,879.7	2,873.6	6.5	6.9	-174.56	-15.7	195.8	292.0	279.6	12.45	23.462	
3,000.0	2,996.6	2,978.7	2,972.2	6.7	7.1	-174.59	-16.5	203.6	306.7	293.8	12.89	23.788	
3,100.0	3,096.4	3,077.6	3,070.8	7.0	7.4	-174.62	-17.2	211.4	321.4	308.0	13.34	24.091	
3,200.0	3,196.1	3,176.5	3,169.4	7.2	7.7	-174.65	-17.9	219.3	336.1	322.3	13.79	24.373	
3,300.0	3,295.9	3,275.4	3,268.0	7.5	7.9	-174.67	-18.7	227.1	350.7	336.5	14.24	24.636	
3,400.0	3,395.7	3,374.3	3,366.6	7.7	8.2	-174.69	-19.4	234.9	365.4	350.7	14.69	24.882	
3,500.0	3,495.4	3,473.2	3,465.3	8.0	8.5	-174.71	-20.2	242.8	380.1	364.9	15.14	25.113	
3,600.0	3,595.2	3,572.2	3,563.9	8.2	8.7	-174.73	-20.9	250.6	394.8	379.2	15.59	25.329	
3,700.0	3,695.0	3,671.1	3,662.5	8.5	9.0	-174.75	-21.6	258.5	409.4	393.4	16.04	25.532	
3,800.0	3,794.7	3,770.0	3,761.1	8.7	9.2	-174.77	-22.4	266.3	424.1	407.6	16.49	25.724	
3,900.0	3,894.6	3,884.9	3,875.7	8.9	9.5	-174.80	-23.0	273.5	438.8	418.9	16.94	25.730	
4,000.0	3,994.6	4,002.8	3,993.6	9.1	9.7	-174.81	-23.3	276.2	440.0	422.6	17.36	25.346	
4,100.0	4,094.6	4,103.8	4,094.6	9.3	9.9	91.76	-23.3	276.2	440.0	422.3	17.76	24.777	
4,200.0	4,194.6	4,203.8	4,194.6	9.5	10.1	91.76	-23.3	276.2	440.0	421.8	18.17	24.214	
4,300.0	4,294.6	4,303.8	4,294.6	9.7	10.3	91.76	-23.3	276.2	440.0	421.4	18.59	23.675	
4,400.0	4,394.6	4,403.8	4,394.6	9.9	10.4	91.76	-23.3	276.2	440.0	421.0	19.00	23.157	
4,500.0	4,494.6	4,503.8	4,494.6	10.1	10.6	91.76	-23.3	276.2	440.0	420.6	19.42	22.659	
4,600.0	4,594.6	4,603.8	4,594.6	10.3	10.8	91.76	-23.3	276.2	440.0	420.2	19.84	22.181	
4,700.0	4,694.6	4,703.8	4,694.6	10.5	11.0	91.76	-23.3	276.2	440.0	419.8	20.26	21.721	
4,800.0	4,794.6	4,803.8	4,794.6	10.8	11.2	91.76	-23.3	276.2	440.0	419.3	20.68	21.278	
4,900.0	4,894.6	4,903.8	4,894.6	11.0	11.4	91.76	-23.3	276.2	440.0	418.9	21.10	20.852	
5,000.0	4,994.6	5,003.8	4,994.6	11.2	11.6	91.76	-23.3	276.2	440.0	418.5	21.53	20.442	
5,100.0	5,094.6	5,103.8	5,094.6	11.4	11.8	91.76	-23.3	276.2	440.0	418.1	21.95	20.046	

CC - Min centre to center distance or convergent point, SF - min separation factor, ES - min ellipse separation

Company:	Synergy Resources	Local Co-ordinate Reference:	Well SRC Gies D-15-22CHZ
Project:	SEC.15-T7N-R65W	TVD Reference:	WELL @ 4851.0ft (RKB - 13')
Reference Site:	SRC Gies Pad Sec.15-T7N-R65W	MD Reference:	WELL @ 4851.0ft (RKB - 13')
Site Error:	0.0ft	North Reference:	True
Reference Well:	SRC Gies D-15-22CHZ	Survey Calculation Method:	Minimum Curvature
Well Error:	0.0ft	Output errors are at	2.00 sigma
Reference Wellbore	Wellbore #1	Database:	landmark
Reference Design:	Plan #1 (5-7-14)	Offset TVD Reference:	Offset Datum

Offset Design												Offset Site Error:	0.0 ft
Survey Program: 0-MWD												Offset Well Error:	0.0 ft
Reference		Offset		Semi Major Axis			Distance						
Measured Depth (ft)	Vertical Depth (ft)	Measured Depth (ft)	Vertical Depth (ft)	Reference (ft)	Offset (ft)	Highside Toolface (°)	Offset Wellbore Centre +N/-S (ft)	+E/-W (ft)	Between Centres (ft)	Between Ellipses (ft)	Minimum Separation (ft)	Separation Factor	Warning
5,200.0	5,194.6	5,203.8	5,194.6	11.6	12.0	91.76	-23.3	276.2	440.0	417.6	22.38	19.665	
5,300.0	5,294.6	5,303.8	5,294.6	11.8	12.2	91.76	-23.3	276.2	440.0	417.2	22.80	19.297	
5,400.0	5,394.6	5,403.8	5,394.6	12.0	12.4	91.76	-23.3	276.2	440.0	416.8	23.23	18.942	
5,500.0	5,494.6	5,503.8	5,494.6	12.2	12.6	91.76	-23.3	276.2	440.0	416.4	23.66	18.600	
5,600.0	5,594.6	5,603.8	5,594.6	12.4	12.8	91.76	-23.3	276.2	440.0	415.9	24.09	18.268	
5,700.0	5,694.6	5,703.8	5,694.6	12.6	13.0	91.76	-23.3	276.2	440.0	415.5	24.52	17.948	
5,800.0	5,794.6	5,803.8	5,794.6	12.9	13.2	91.76	-23.3	276.2	440.0	415.1	24.95	17.639	
5,900.0	5,894.6	5,903.8	5,894.6	13.1	13.4	91.76	-23.3	276.2	440.0	414.6	25.38	17.339	
6,000.0	5,994.6	6,003.8	5,994.6	13.3	13.6	91.76	-23.3	276.2	440.0	414.2	25.81	17.049	
6,100.0	6,094.6	6,103.8	6,094.6	13.5	13.8	91.76	-23.3	276.2	440.0	413.8	26.24	16.768	
6,200.0	6,194.6	6,203.8	6,194.6	13.7	14.0	91.76	-23.3	276.2	440.0	413.3	26.67	16.496	
6,300.0	6,294.6	6,303.8	6,294.6	13.9	14.2	91.76	-23.3	276.2	440.0	412.9	27.11	16.232	
6,400.0	6,394.6	6,403.8	6,394.6	14.1	14.5	91.76	-23.3	276.2	440.0	412.5	27.54	15.977	
6,500.0	6,494.6	6,503.8	6,494.6	14.4	14.7	91.76	-23.3	276.2	440.0	412.0	27.98	15.728	
6,600.0	6,594.6	6,603.8	6,594.6	14.6	14.9	91.76	-23.3	276.2	440.0	411.6	28.41	15.488	
6,700.0	6,694.6	6,703.8	6,694.6	14.8	15.1	91.76	-23.3	276.2	440.0	411.2	28.85	15.254	
6,800.0	6,794.6	6,803.8	6,794.6	15.0	15.3	-88.02	-23.3	276.2	440.0	410.7	29.28	15.027	
6,900.0	6,894.2	6,901.7	6,892.2	15.2	15.5	-88.04	-30.1	276.2	440.0	410.3	29.66	14.833	
7,000.0	6,992.0	7,000.0	6,988.3	15.4	15.7	-88.10	-50.2	276.3	440.0	410.0	30.04	14.646	
7,100.0	7,085.8	7,097.7	7,080.3	15.6	15.9	-88.19	-83.1	276.4	440.0	409.5	30.46	14.444	
7,200.0	7,174.0	7,195.9	7,167.3	15.8	16.1	-88.32	-128.4	276.6	439.9	409.0	30.97	14.204	
7,300.0	7,254.8	7,294.2	7,247.4	16.1	16.5	-88.48	-185.2	276.8	439.9	408.3	31.64	13.902	
7,400.0	7,326.6	7,392.7	7,319.1	16.5	16.9	-88.67	-252.6	277.1	439.9	407.3	32.53	13.521	
7,500.0	7,388.0	7,491.3	7,381.0	17.1	17.4	-88.88	-329.4	277.4	439.8	406.1	33.70	13.052	
7,600.0	7,437.9	7,590.3	7,431.8	17.8	18.1	-89.12	-414.1	277.7	439.8	404.6	35.18	12.503	
7,700.0	7,475.2	7,689.4	7,470.6	18.7	19.0	-89.37	-505.3	278.1	439.8	402.8	36.97	11.896	
7,800.0	7,499.3	7,788.9	7,496.5	19.7	20.0	-89.64	-601.2	278.4	439.8	400.7	39.06	11.259	
7,900.0	7,509.6	7,888.6	7,508.9	20.9	21.1	-89.91	-700.1	278.8	439.8	398.4	41.40	10.622	
7,914.4	7,510.0	7,903.0	7,509.6	21.0	21.3	-89.94	-714.5	278.9	439.8	398.0	41.76	10.531	
8,000.0	7,510.0	7,988.6	7,510.0	22.1	22.4	-90.00	-800.1	279.2	439.8	395.8	43.94	10.008	
8,100.0	7,510.0	8,088.6	7,510.0	23.5	23.7	-90.00	-900.1	279.6	439.8	393.1	46.66	9.425	
8,200.0	7,510.0	8,188.6	7,510.0	24.9	25.1	-90.00	-1,000.1	279.9	439.8	390.2	49.53	8.879	
8,300.0	7,510.0	8,288.6	7,510.0	26.4	26.6	-90.00	-1,100.1	280.3	439.8	387.2	52.52	8.373	
8,400.0	7,510.0	8,388.6	7,510.0	27.9	28.1	-90.00	-1,200.1	280.7	439.8	384.1	55.62	7.906	
8,500.0	7,510.0	8,488.6	7,510.0	29.5	29.7	-90.00	-1,300.1	281.1	439.8	381.0	58.81	7.478	
8,600.0	7,510.0	8,588.6	7,510.0	31.1	31.3	-90.00	-1,400.1	281.5	439.8	377.7	62.07	7.085	
8,700.0	7,510.0	8,688.6	7,510.0	32.8	33.0	-90.00	-1,500.1	281.9	439.8	374.4	65.40	6.724	
8,800.0	7,510.0	8,788.6	7,510.0	34.5	34.6	-90.00	-1,600.1	282.2	439.8	371.0	68.78	6.394	
8,900.0	7,510.0	8,888.6	7,510.0	36.2	36.3	-90.00	-1,700.1	282.6	439.8	367.6	72.21	6.090	
9,000.0	7,510.0	8,988.6	7,510.0	37.9	38.1	-90.00	-1,800.1	283.0	439.8	364.1	75.68	5.811	
9,100.0	7,510.0	9,088.6	7,510.0	39.7	39.8	-90.00	-1,900.1	283.4	439.8	360.6	79.19	5.554	
9,200.0	7,510.0	9,188.6	7,510.0	41.4	41.6	-90.00	-2,000.1	283.8	439.8	357.1	82.72	5.316	
9,300.0	7,510.0	9,288.6	7,510.0	43.2	43.3	-90.00	-2,100.1	284.1	439.8	353.5	86.28	5.097	
9,400.0	7,510.0	9,388.6	7,510.0	45.0	45.1	-90.00	-2,200.1	284.5	439.8	349.9	89.87	4.894	
9,500.0	7,510.0	9,488.6	7,510.0	46.8	46.9	-90.00	-2,300.1	284.9	439.8	346.3	93.48	4.705	
9,600.0	7,510.0	9,588.6	7,510.0	48.6	48.7	-90.00	-2,400.1	285.3	439.8	342.7	97.10	4.529	
9,700.0	7,510.0	9,688.6	7,510.0	50.4	50.5	-90.00	-2,500.1	285.7	439.8	339.0	100.74	4.365	
9,800.0	7,510.0	9,788.6	7,510.0	52.3	52.4	-90.00	-2,600.1	286.1	439.8	335.4	104.40	4.212	
9,900.0	7,510.0	9,888.6	7,510.0	54.1	54.2	-90.00	-2,700.1	286.4	439.8	331.7	108.07	4.069	
10,000.0	7,510.0	9,988.6	7,510.0	55.9	56.0	-90.00	-2,800.1	286.8	439.8	328.0	111.76	3.935	
10,100.0	7,510.0	10,088.6	7,510.0	57.8	57.9	-90.00	-2,900.1	287.2	439.8	324.3	115.45	3.809	
10,200.0	7,510.0	10,188.6	7,510.0	59.6	59.7	-90.00	-3,000.1	287.6	439.8	320.6	119.15	3.691	

CC - Min centre to center distance or convergent point, SF - min separation factor, ES - min ellipse separation

Company:	Synergy Resources	Local Co-ordinate Reference:	Well SRC Gies D-15-22CHZ
Project:	SEC.15-T7N-R65W	TVD Reference:	WELL @ 4851.0ft (RKB - 13')
Reference Site:	SRC Gies Pad Sec.15-T7N-R65W	MD Reference:	WELL @ 4851.0ft (RKB - 13')
Site Error:	0.0ft	North Reference:	True
Reference Well:	SRC Gies D-15-22CHZ	Survey Calculation Method:	Minimum Curvature
Well Error:	0.0ft	Output errors are at	2.00 sigma
Reference Wellbore	Wellbore #1	Database:	landmark
Reference Design:	Plan #1 (5-7-14)	Offset TVD Reference:	Offset Datum

Offset Design SRC Gies Pad Sec.15-T7N-R65W - SRC Gies 44-15-22CHZ - Wellbore #1 - Plan #1 (5-7-14)												Offset Site Error:	0.0 ft
Survey Program: 0-MWD												Offset Well Error:	0.0 ft
Reference		Offset		Semi Major Axis			Distance						
Measured Depth (ft)	Vertical Depth (ft)	Measured Depth (ft)	Vertical Depth (ft)	Reference (ft)	Offset (ft)	Highside Toolface (°)	Offset Wellbore Centre +N/-S (ft)	+E/-W (ft)	Between Centres (ft)	Between Ellipses (ft)	Minimum Separation (ft)	Separation Factor	Warning
10,300.0	7,510.0	10,288.6	7,510.0	61.5	61.6	-90.00	-3,100.1	288.0	439.8	316.9	122.87	3.580	
10,400.0	7,510.0	10,388.6	7,510.0	63.4	63.4	-90.00	-3,200.1	288.4	439.8	313.2	126.59	3.474	
10,500.0	7,510.0	10,488.6	7,510.0	65.2	65.3	-90.00	-3,300.1	288.7	439.8	309.5	130.32	3.375	
10,600.0	7,510.0	10,588.6	7,510.0	67.1	67.2	-90.00	-3,400.1	289.1	439.8	305.8	134.05	3.281	
10,700.0	7,510.0	10,688.6	7,510.0	68.9	69.0	-90.00	-3,500.1	289.5	439.8	302.0	137.79	3.192	
10,800.0	7,510.0	10,788.6	7,510.0	70.8	70.9	-90.00	-3,600.1	289.9	439.8	298.3	141.54	3.107	
10,900.0	7,510.0	10,888.6	7,510.0	72.7	72.8	-90.00	-3,700.1	290.3	439.8	294.5	145.29	3.027	
11,000.0	7,510.0	10,988.6	7,510.0	74.6	74.6	-90.00	-3,800.1	290.7	439.8	290.8	149.05	2.951	
11,100.0	7,510.0	11,088.6	7,510.0	76.5	76.5	-90.00	-3,900.1	291.0	439.8	287.0	152.81	2.878	
11,200.0	7,510.0	11,188.6	7,510.0	78.3	78.4	-90.00	-4,000.1	291.4	439.8	283.2	156.58	2.809	
11,300.0	7,510.0	11,288.6	7,510.0	80.2	80.3	-90.00	-4,100.1	291.8	439.8	279.5	160.35	2.743	
11,400.0	7,510.0	11,388.6	7,510.0	82.1	82.2	-90.00	-4,200.1	292.2	439.8	275.7	164.12	2.680	
11,500.0	7,510.0	11,488.6	7,510.0	84.0	84.1	-90.00	-4,300.1	292.6	439.8	271.9	167.90	2.619	
11,600.0	7,510.0	11,588.6	7,510.0	85.9	85.9	-90.00	-4,400.1	292.9	439.8	268.1	171.68	2.562	
11,700.0	7,510.0	11,688.6	7,510.0	87.8	87.8	-90.00	-4,500.1	293.3	439.8	264.4	175.47	2.507	
11,715.1	7,510.0	11,703.7	7,510.0	88.1	88.1	-90.00	-4,515.2	293.4	439.8	263.8	176.04	2.498 SF	

Company:	Synergy Resources	Local Co-ordinate Reference:	Well SRC Gies D-15-22CHZ
Project:	SEC.15-T7N-R65W	TVD Reference:	WELL @ 4851.0ft (RKB - 13')
Reference Site:	SRC Gies Pad Sec.15-T7N-R65W	MD Reference:	WELL @ 4851.0ft (RKB - 13')
Site Error:	0.0ft	North Reference:	True
Reference Well:	SRC Gies D-15-22CHZ	Survey Calculation Method:	Minimum Curvature
Well Error:	0.0ft	Output errors are at	2.00 sigma
Reference Wellbore	Wellbore #1	Database:	landmark
Reference Design:	Plan #1 (5-7-14)	Offset TVD Reference:	Offset Datum

Offset Design													Offset Site Error:	0.0ft
Survey Program: 0-MWD													Offset Well Error:	0.0ft
Reference		Offset		Semi Major Axis			Distance							Warning
Measured Depth (ft)	Vertical Depth (ft)	Measured Depth (ft)	Vertical Depth (ft)	Reference (ft)	Offset (ft)	Highside Toolface (°)	Offset Wellbore Centre +N/-S (ft)	+E/-W (ft)	Between Centres (ft)	Between Ellipses (ft)	Minimum Separation (ft)	Separation Factor		
0.0	0.0	0.0	0.0	0.0	0.0	91.40	-1.5	59.7	59.8					
100.0	100.0	100.0	100.0	0.1	0.1	91.40	-1.5	59.7	59.8	59.5	0.22	265.839		
200.0	200.0	200.0	200.0	0.3	0.3	91.40	-1.5	59.7	59.8	59.1	0.67	88.613		
300.0	300.0	300.0	300.0	0.6	0.6	91.40	-1.5	59.7	59.8	58.6	1.12	53.168		
400.0	400.0	400.0	400.0	0.8	0.8	91.40	-1.5	59.7	59.8	58.2	1.57	37.977		
500.0	500.0	500.0	500.0	1.0	1.0	91.40	-1.5	59.7	59.8	57.7	2.02	29.538		
600.0	600.0	600.0	600.0	1.2	1.2	91.40	-1.5	59.7	59.8	57.3	2.47	24.167 CC, ES		
700.0	700.0	697.9	697.9	1.5	1.4	91.47	-1.6	61.4	61.5	58.6	2.90	21.161		
800.0	800.0	795.6	795.5	1.7	1.6	91.64	-1.9	66.4	66.6	63.2	3.33	19.976		
900.0	900.0	892.9	892.3	1.9	1.9	91.88	-2.4	74.7	75.1	71.3	3.78	19.869		
1,000.0	1,000.0	992.0	990.9	2.1	2.1	92.11	-3.1	85.1	85.7	81.4	4.25	20.166		
1,100.0	1,100.0	1,091.4	1,089.8	2.4	2.4	92.29	-3.8	95.7	96.3	91.6	4.73	20.349		
1,200.0	1,200.0	1,190.8	1,188.6	2.6	2.6	92.44	-4.5	106.2	106.9	101.7	5.22	20.465		
1,300.0	1,300.0	1,290.3	1,287.5	2.8	2.9	92.56	-5.2	116.8	117.5	111.8	5.72	20.537		
1,400.0	1,400.0	1,389.7	1,386.4	3.0	3.2	92.66	-5.9	127.3	128.2	121.9	6.23	20.582		
1,500.0	1,500.0	1,488.9	1,485.1	3.2	3.5	-173.88	-6.6	137.8	140.5	134.1	6.41	21.906		
1,600.0	1,599.8	1,587.7	1,583.2	3.4	3.8	-173.97	-7.3	148.3	156.3	149.5	6.83	22.891		
1,700.0	1,699.6	1,686.2	1,681.2	3.7	4.0	-174.14	-8.0	158.7	173.6	166.3	7.25	23.945		
1,800.0	1,799.4	1,784.7	1,779.1	3.9	4.3	-174.27	-8.7	169.2	190.9	183.2	7.68	24.867		
1,900.0	1,899.1	1,883.1	1,877.0	4.1	4.6	-174.38	-9.4	179.6	208.2	200.1	8.11	25.681		
2,000.0	1,998.9	1,981.6	1,975.0	4.3	4.9	-174.47	-10.1	190.0	225.6	217.0	8.54	26.402		
2,100.0	2,098.7	2,080.1	2,072.9	4.6	5.2	-174.55	-10.7	200.5	242.9	233.9	8.98	27.046		
2,200.0	2,198.4	2,178.6	2,170.8	4.8	5.5	-174.62	-11.4	210.9	260.2	250.8	9.42	27.623		
2,300.0	2,298.2	2,277.1	2,268.8	5.0	5.8	-174.68	-12.1	221.4	277.5	267.7	9.86	28.144		
2,400.0	2,398.0	2,375.6	2,366.7	5.3	6.1	-174.73	-12.8	231.8	294.9	284.6	10.30	28.614		
2,500.0	2,497.8	2,474.1	2,464.6	5.5	6.4	-174.78	-13.5	242.2	312.2	301.4	10.75	29.042		
2,600.0	2,597.5	2,572.6	2,562.5	5.7	6.7	-174.82	-14.2	252.7	329.5	318.3	11.20	29.432		
2,700.0	2,697.3	2,671.0	2,660.5	6.0	6.9	-174.86	-14.9	263.1	346.8	335.2	11.64	29.790		
2,800.0	2,797.1	2,769.5	2,758.4	6.2	7.2	-174.90	-15.6	273.5	364.2	352.1	12.09	30.118		
2,900.0	2,896.8	2,868.0	2,856.3	6.5	7.5	-174.93	-16.3	284.0	381.5	368.9	12.54	30.420		
3,000.0	2,996.6	2,966.5	2,954.3	6.7	7.8	-174.96	-16.9	294.4	398.8	385.8	12.99	30.699		
3,100.0	3,096.4	3,065.0	3,052.2	7.0	8.1	-174.98	-17.6	304.9	416.1	402.7	13.44	30.958		
3,200.0	3,196.1	3,163.5	3,150.1	7.2	8.4	-175.01	-18.3	315.3	433.5	419.6	13.89	31.199		
3,300.0	3,295.9	3,262.0	3,248.1	7.5	8.7	-175.03	-19.0	325.7	450.8	436.4	14.35	31.423		
3,400.0	3,395.7	3,360.5	3,346.0	7.7	9.0	-175.05	-19.7	336.2	468.1	453.3	14.80	31.631		
3,500.0	3,495.4	3,458.9	3,443.9	8.0	9.3	-175.07	-20.4	346.6	485.4	470.2	15.25	31.827		
3,600.0	3,595.2	3,557.4	3,541.8	8.2	9.6	-175.09	-21.1	357.1	502.8	487.1	15.71	32.010		
3,700.0	3,695.0	3,655.9	3,639.8	8.5	9.9	-175.11	-21.8	367.5	520.1	503.9	16.16	32.182		
3,800.0	3,794.7	3,754.4	3,737.7	8.7	10.2	-175.12	-22.5	377.9	537.4	520.8	16.62	32.344		
3,900.0	3,894.6	3,853.1	3,835.9	8.9	10.5	-175.15	-23.1	388.4	553.4	536.3	17.09	32.385		
4,000.0	3,994.6	3,952.3	3,934.5	9.1	10.8	-175.14	-23.8	398.9	565.9	548.4	17.53	32.281		
4,100.0	4,094.6	4,051.8	4,033.4	9.3	11.1	91.47	-24.5	409.5	576.5	558.5	17.96	32.093		
4,200.0	4,194.6	4,151.2	4,132.3	9.5	11.4	91.51	-25.2	420.0	587.1	568.7	18.41	31.895		
4,300.0	4,294.6	4,250.6	4,231.1	9.7	11.7	91.55	-25.9	430.5	597.7	578.9	18.85	31.705		
4,400.0	4,394.6	4,350.1	4,330.0	9.9	12.0	91.59	-26.6	441.1	608.3	589.1	19.30	31.523		
4,500.0	4,494.6	4,449.5	4,428.9	10.1	12.3	91.63	-27.3	451.6	619.0	599.2	19.75	31.348		
4,600.0	4,594.6	4,548.9	4,527.7	10.3	12.6	91.67	-28.0	462.2	629.6	609.4	20.19	31.180		
4,700.0	4,694.6	4,648.4	4,626.6	10.5	12.9	91.70	-28.7	472.7	640.2	619.6	20.64	31.018		
4,800.0	4,794.6	4,756.6	4,734.3	10.8	13.2	91.74	-29.4	483.9	650.6	629.5	21.10	30.838		
4,900.0	4,894.6	4,885.9	4,863.2	11.0	13.4	91.77	-30.0	493.0	657.6	636.1	21.55	30.511		
5,000.0	4,994.6	5,015.7	4,992.9	11.2	13.7	91.78	-30.3	496.2	660.1	638.1	22.00	30.013		
5,100.0	5,094.6	5,117.3	5,094.6	11.4	13.8	91.78	-30.3	496.2	660.2	637.7	22.40	29.464		

CC - Min centre to center distance or convergent point, SF - min separation factor, ES - min ellipse separation

Company:	Synergy Resources	Local Co-ordinate Reference:	Well SRC Gies D-15-22CHZ
Project:	SEC.15-T7N-R65W	TVD Reference:	WELL @ 4851.0ft (RKB - 13')
Reference Site:	SRC Gies Pad Sec.15-T7N-R65W	MD Reference:	WELL @ 4851.0ft (RKB - 13')
Site Error:	0.0ft	North Reference:	True
Reference Well:	SRC Gies D-15-22CHZ	Survey Calculation Method:	Minimum Curvature
Well Error:	0.0ft	Output errors are at	2.00 sigma
Reference Wellbore	Wellbore #1	Database:	landmark
Reference Design:	Plan #1 (5-7-14)	Offset TVD Reference:	Offset Datum

Offset Design												Offset Site Error:	0.0 ft
Survey Program: 0-MWD												Offset Well Error:	0.0 ft
Reference		Offset		Semi Major Axis			Distance						
Measured Depth (ft)	Vertical Depth (ft)	Measured Depth (ft)	Vertical Depth (ft)	Reference (ft)	Offset (ft)	Highside Toolface (°)	Offset Wellbore Centre +N/-S (ft)	+E/-W (ft)	Between Centres (ft)	Between Ellipses (ft)	Minimum Separation (ft)	Separation Factor	Warning
5,200.0	5,194.6	5,217.3	5,194.6	11.6	14.0	91.78	-30.3	496.2	660.2	637.3	22.82	28.934	
5,300.0	5,294.6	5,317.3	5,294.6	11.8	14.2	91.78	-30.3	496.2	660.2	636.9	23.23	28.422	
5,400.0	5,394.6	5,417.3	5,394.6	12.0	14.3	91.78	-30.3	496.2	660.2	636.5	23.64	27.925	
5,500.0	5,494.6	5,517.3	5,494.6	12.2	14.5	91.78	-30.3	496.2	660.2	636.1	24.05	27.444	
5,600.0	5,594.6	5,617.3	5,594.6	12.4	14.7	91.78	-30.3	496.2	660.2	635.7	24.47	26.978	
5,700.0	5,694.6	5,717.3	5,694.6	12.6	14.8	91.78	-30.3	496.2	660.2	635.3	24.89	26.526	
5,800.0	5,794.6	5,817.3	5,794.6	12.9	15.0	91.78	-30.3	496.2	660.2	634.8	25.30	26.088	
5,900.0	5,894.6	5,917.3	5,894.6	13.1	15.2	91.78	-30.3	496.2	660.2	634.4	25.72	25.663	
6,000.0	5,994.6	6,017.3	5,994.6	13.3	15.4	91.78	-30.3	496.2	660.2	634.0	26.14	25.251	
6,100.0	6,094.6	6,117.3	6,094.6	13.5	15.6	91.78	-30.3	496.2	660.2	633.6	26.56	24.851	
6,200.0	6,194.6	6,217.3	6,194.6	13.7	15.7	91.78	-30.3	496.2	660.2	633.2	26.99	24.462	
6,300.0	6,294.6	6,317.3	6,294.6	13.9	15.9	91.78	-30.3	496.2	660.2	632.7	27.41	24.085	
6,400.0	6,394.6	6,417.3	6,394.6	14.1	16.1	91.78	-30.3	496.2	660.2	632.3	27.83	23.719	
6,500.0	6,494.6	6,517.3	6,494.6	14.4	16.3	91.78	-30.3	496.2	660.2	631.9	28.26	23.362	
6,500.8	6,495.4	6,518.1	6,495.4	14.4	16.3	91.78	-30.3	496.2	660.2	631.9	28.26	23.360	
6,600.0	6,594.6	6,614.9	6,592.1	14.6	16.5	92.06	-33.5	496.2	660.3	631.6	28.67	23.034	
6,700.0	6,694.6	6,709.1	6,685.0	14.8	16.6	93.37	-48.6	496.3	661.1	632.1	29.06	22.748	
6,800.0	6,794.6	6,800.0	6,772.0	15.0	16.8	-84.17	-74.6	496.4	663.6	634.1	29.46	22.528	
6,900.0	6,894.2	6,882.0	6,847.1	15.2	17.0	-81.49	-107.4	496.5	667.9	638.1	29.82	22.397	
7,000.0	6,992.0	6,963.4	6,917.6	15.4	17.2	-78.92	-148.2	496.7	673.5	643.3	30.20	22.304	
7,100.0	7,085.8	7,042.8	6,981.3	15.6	17.5	-76.57	-195.4	496.9	679.7	649.2	30.59	22.223	
7,200.0	7,174.0	7,120.3	7,038.2	15.8	17.8	-74.45	-248.1	497.1	686.3	655.3	31.03	22.120	
7,300.0	7,254.8	7,200.0	7,090.3	16.1	18.2	-72.54	-308.3	497.3	692.8	661.3	31.56	21.954	
7,400.0	7,326.6	7,271.5	7,131.2	16.5	18.6	-71.02	-366.9	497.5	698.8	666.6	32.20	21.701	
7,500.0	7,388.0	7,350.0	7,169.0	17.1	19.2	-69.69	-435.6	497.8	704.1	671.0	33.07	21.291	
7,600.0	7,437.9	7,419.0	7,196.0	17.8	19.7	-68.76	-499.2	498.0	708.3	674.2	34.14	20.747	
7,700.0	7,475.2	7,492.0	7,217.6	18.7	20.4	-68.09	-568.8	498.3	711.3	675.8	35.52	20.026	
7,800.0	7,499.3	7,564.7	7,232.0	19.7	21.2	-67.74	-640.0	498.6	713.0	675.8	37.21	19.162	
7,900.0	7,509.6	7,637.2	7,239.2	20.9	22.0	-67.69	-712.2	498.9	713.2	674.0	39.19	18.199	
7,999.2	7,511.3	7,723.5	7,240.0	22.1	23.0	-67.65	-798.4	499.2	713.4	672.0	41.42	17.221	
8,000.0	7,510.0	7,724.3	7,240.0	22.1	23.1	-67.74	-799.2	499.2	712.9	671.4	41.46	17.193	
8,100.0	7,510.0	7,824.3	7,240.0	23.5	24.4	-67.74	-899.2	499.6	712.9	668.9	44.01	16.197	
8,200.0	7,510.0	7,924.3	7,240.0	24.9	25.7	-67.74	-999.2	500.0	712.9	666.2	46.70	15.265	
8,300.0	7,510.0	8,024.3	7,240.0	26.4	27.2	-67.74	-1,099.2	500.4	712.9	663.4	49.51	14.400	
8,400.0	7,510.0	8,124.3	7,240.0	27.9	28.7	-67.75	-1,199.2	500.7	712.9	660.5	52.41	13.602	
8,500.0	7,510.0	8,224.3	7,240.0	29.5	30.2	-67.75	-1,299.2	501.1	712.9	657.5	55.40	12.868	
8,600.0	7,510.0	8,324.3	7,240.0	31.1	31.8	-67.75	-1,399.2	501.5	712.9	654.5	58.46	12.195	
8,700.0	7,510.0	8,424.3	7,240.0	32.8	33.5	-67.75	-1,499.2	501.9	712.9	651.3	61.58	11.578	
8,800.0	7,510.0	8,524.3	7,240.0	34.5	35.1	-67.75	-1,599.2	502.3	712.9	648.2	64.74	11.012	
8,900.0	7,510.0	8,624.3	7,240.0	36.2	36.8	-67.75	-1,699.2	502.7	712.9	645.0	67.96	10.491	
9,000.0	7,510.0	8,724.3	7,240.0	37.9	38.5	-67.75	-1,799.2	503.1	712.9	641.7	71.21	10.012	
9,100.0	7,510.0	8,824.3	7,240.0	39.7	40.2	-67.75	-1,899.2	503.4	712.9	638.5	74.49	9.571	
9,200.0	7,510.0	8,924.3	7,240.0	41.4	42.0	-67.75	-1,999.2	503.8	712.9	635.1	77.80	9.164	
9,300.0	7,510.0	9,024.3	7,240.0	43.2	43.8	-67.75	-2,099.2	504.2	713.0	631.8	81.14	8.787	
9,400.0	7,510.0	9,124.3	7,240.0	45.0	45.5	-67.75	-2,199.2	504.6	713.0	628.5	84.50	8.438	
9,500.0	7,510.0	9,224.3	7,240.0	46.8	47.3	-67.75	-2,299.2	505.0	713.0	625.1	87.87	8.113	
9,600.0	7,510.0	9,324.3	7,240.0	48.6	49.1	-67.75	-2,399.2	505.4	713.0	621.7	91.27	7.812	
9,700.0	7,510.0	9,424.3	7,240.0	50.4	50.9	-67.75	-2,499.2	505.8	713.0	618.3	94.68	7.530	
9,800.0	7,510.0	9,524.3	7,240.0	52.3	52.7	-67.75	-2,599.2	506.1	713.0	614.9	98.11	7.267	
9,900.0	7,510.0	9,624.3	7,240.0	54.1	54.5	-67.75	-2,699.2	506.5	713.0	611.4	101.55	7.021	
10,000.0	7,510.0	9,724.3	7,240.0	55.9	56.4	-67.75	-2,799.2	506.9	713.0	608.0	105.00	6.790	
10,100.0	7,510.0	9,824.3	7,240.0	57.8	58.2	-67.75	-2,899.2	507.3	713.0	604.5	108.46	6.574	

CC - Min centre to center distance or convergent point, SF - min separation factor, ES - min ellipse separation

Company:	Synergy Resources	Local Co-ordinate Reference:	Well SRC Gies D-15-22CHZ
Project:	SEC.15-T7N-R65W	TVD Reference:	WELL @ 4851.0ft (RKB - 13')
Reference Site:	SRC Gies Pad Sec.15-T7N-R65W	MD Reference:	WELL @ 4851.0ft (RKB - 13')
Site Error:	0.0ft	North Reference:	True
Reference Well:	SRC Gies D-15-22CHZ	Survey Calculation Method:	Minimum Curvature
Well Error:	0.0ft	Output errors are at	2.00 sigma
Reference Wellbore	Wellbore #1	Database:	landmark
Reference Design:	Plan #1 (5-7-14)	Offset TVD Reference:	Offset Datum

Offset Design SRC Gies Pad Sec.15-T7N-R65W - SRC Gies 44-15-22NHZ - Wellbore #1 - Plan #1 (5-7-14)												Offset Site Error:	0.0 ft
Survey Program: 0-MWD												Offset Well Error:	0.0 ft
Reference		Offset		Semi Major Axis			Distance						
Measured Depth (ft)	Vertical Depth (ft)	Measured Depth (ft)	Vertical Depth (ft)	Reference (ft)	Offset (ft)	Highside Toolface (°)	Offset Wellbore Centre +N/-S (ft)	+E/-W (ft)	Between Centres (ft)	Between Ellipses (ft)	Minimum Separation (ft)	Separation Factor	Warning
10,200.0	7,510.0	9,924.3	7,240.0	59.6	60.0	-67.75	-2,999.2	507.7	713.0	601.1	111.93	6.370	
10,300.0	7,510.0	10,024.3	7,240.0	61.5	61.9	-67.75	-3,099.2	508.1	713.0	597.6	115.41	6.178	
10,400.0	7,510.0	10,124.3	7,240.0	63.4	63.7	-67.75	-3,199.2	508.5	713.0	594.1	118.89	5.997	
10,500.0	7,510.0	10,224.3	7,240.0	65.2	65.6	-67.75	-3,299.2	508.8	713.0	590.6	122.38	5.826	
10,600.0	7,510.0	10,324.3	7,240.0	67.1	67.5	-67.75	-3,399.2	509.2	713.0	587.1	125.88	5.664	
10,700.0	7,510.0	10,424.3	7,240.0	68.9	69.3	-67.75	-3,499.2	509.6	713.0	583.6	129.39	5.511	
10,800.0	7,510.0	10,524.3	7,240.0	70.8	71.2	-67.75	-3,599.2	510.0	713.0	580.1	132.90	5.365	
10,900.0	7,510.0	10,624.3	7,240.0	72.7	73.1	-67.75	-3,699.2	510.4	713.0	576.6	136.41	5.227	
11,000.0	7,510.0	10,724.3	7,240.0	74.6	74.9	-67.75	-3,799.2	510.8	713.0	573.1	139.93	5.095	
11,100.0	7,510.0	10,824.3	7,240.0	76.5	76.8	-67.75	-3,899.2	511.2	713.0	569.6	143.46	4.970	
11,200.0	7,510.0	10,924.3	7,240.0	78.3	78.7	-67.75	-3,999.2	511.5	713.0	566.0	146.99	4.851	
11,300.0	7,510.0	11,024.3	7,240.0	80.2	80.6	-67.75	-4,099.2	511.9	713.0	562.5	150.52	4.737	
11,400.0	7,510.0	11,124.3	7,240.0	82.1	82.4	-67.75	-4,199.2	512.3	713.0	559.0	154.06	4.628	
11,500.0	7,510.0	11,224.3	7,240.0	84.0	84.3	-67.75	-4,299.2	512.7	713.0	555.5	157.60	4.525	
11,600.0	7,510.0	11,324.3	7,240.0	85.9	86.2	-67.75	-4,399.2	513.1	713.1	551.9	161.14	4.425	
11,700.0	7,510.0	11,424.3	7,240.0	87.8	88.1	-67.75	-4,499.2	513.5	713.1	548.4	164.68	4.330	
11,715.1	7,510.0	11,439.4	7,240.0	88.1	88.4	-67.75	-4,514.3	513.5	713.1	547.8	165.22	4.316 SF	

Company:	Synergy Resources	Local Co-ordinate Reference:	Well SRC Gies D-15-22CHZ
Project:	SEC.15-T7N-R65W	TVD Reference:	WELL @ 4851.0ft (RKB - 13')
Reference Site:	SRC Gies Pad Sec.15-T7N-R65W	MD Reference:	WELL @ 4851.0ft (RKB - 13')
Site Error:	0.0ft	North Reference:	True
Reference Well:	SRC Gies D-15-22CHZ	Survey Calculation Method:	Minimum Curvature
Well Error:	0.0ft	Output errors are at	2.00 sigma
Reference Wellbore	Wellbore #1	Database:	landmark
Reference Design:	Plan #1 (5-7-14)	Offset TVD Reference:	Offset Datum

Offset Design												Offset Site Error:	0.0 ft
Survey Program: 0-MWD												Offset Well Error:	0.0 ft
Reference		Offset		Semi Major Axis			Distance						Warning
Measured Depth (ft)	Vertical Depth (ft)	Measured Depth (ft)	Vertical Depth (ft)	Reference (ft)	Offset (ft)	Highside Toolface (°)	Offset Wellbore Centre +N/-S (ft)	+E/-W (ft)	Between Centres (ft)	Between Ellipses (ft)	Minimum Separation (ft)	Separation Factor	
0.0	0.0	0.0	0.0	0.0	0.0	91.06	-0.4	19.7	19.7	19.7	0.00	N/A	
100.0	100.0	100.0	100.0	0.1	0.1	91.06	-0.4	19.7	19.7	19.5	0.22	87.777	
200.0	200.0	200.0	200.0	0.3	0.3	91.06	-0.4	19.7	19.7	19.1	0.67	29.259	
300.0	300.0	300.0	300.0	0.6	0.6	91.06	-0.4	19.7	19.7	18.6	1.12	17.555	
400.0	400.0	400.0	400.0	0.8	0.8	91.06	-0.4	19.7	19.7	18.2	1.57	12.540	
500.0	500.0	500.0	500.0	1.0	1.0	91.06	-0.4	19.7	19.7	17.7	2.02	9.753	
600.0	600.0	600.0	600.0	1.2	1.2	91.06	-0.4	19.7	19.7	17.3	2.47	7.980	
700.0	700.0	700.0	700.0	1.5	1.5	91.06	-0.4	19.7	19.7	16.8	2.92	6.752	
800.0	800.0	800.0	800.0	1.7	1.7	91.06	-0.4	19.7	19.7	16.4	3.37	5.852	
900.0	900.0	900.0	900.0	1.9	1.9	91.06	-0.4	19.7	19.7	15.9	3.82	5.163	
1,000.0	1,000.0	1,000.0	1,000.0	2.1	2.1	91.06	-0.4	19.7	19.7	15.5	4.27	4.620 CC, ES	
1,100.0	1,100.0	1,099.7	1,099.7	2.4	2.3	92.23	-0.8	20.7	20.7	16.1	4.69	4.423	
1,200.0	1,200.0	1,199.7	1,199.7	2.6	2.5	93.55	-1.4	22.0	22.0	16.9	5.11	4.310	
1,300.0	1,300.0	1,299.7	1,299.7	2.8	2.7	94.72	-1.9	23.2	23.3	17.8	5.53	4.212	
1,400.0	1,400.0	1,399.7	1,399.7	3.0	2.9	95.77	-2.5	24.5	24.6	18.6	5.96	4.127	
1,500.0	1,500.0	1,499.7	1,499.6	3.2	3.1	-170.49	-3.0	25.7	27.6	21.2	6.36	4.335	
1,600.0	1,599.8	1,599.5	1,599.4	3.4	3.3	-171.22	-3.6	26.9	34.0	27.3	6.76	5.035	
1,700.0	1,699.6	1,699.1	1,699.1	3.7	3.5	-172.04	-4.1	28.2	42.1	34.9	7.17	5.865	
1,800.0	1,799.4	1,798.8	1,798.7	3.9	3.8	-172.60	-4.7	29.4	50.1	42.5	7.58	6.601	
1,900.0	1,899.1	1,898.5	1,898.4	4.1	4.0	-173.00	-5.2	30.6	58.1	50.1	8.00	7.258	
2,000.0	1,998.9	1,998.2	1,998.1	4.3	4.2	-173.31	-5.8	31.9	66.1	57.7	8.43	7.846	
2,100.0	2,098.7	2,097.8	2,097.7	4.6	4.4	-173.55	-6.3	33.1	74.1	65.3	8.85	8.376	
2,200.0	2,198.4	2,197.5	2,197.4	4.8	4.6	-173.74	-6.9	34.4	82.2	72.9	9.28	8.854	
2,300.0	2,298.2	2,297.2	2,297.1	5.0	4.8	-173.90	-7.4	35.6	90.2	80.5	9.71	9.288	
2,400.0	2,398.0	2,396.9	2,396.7	5.3	5.1	-174.03	-8.0	36.8	98.2	88.1	10.14	9.682	
2,500.0	2,497.8	2,496.5	2,496.4	5.5	5.3	-174.14	-8.5	38.1	106.2	95.6	10.58	10.043	
2,600.0	2,597.5	2,596.2	2,596.1	5.7	5.5	-174.24	-9.1	39.3	114.3	103.2	11.01	10.374	
2,700.0	2,697.3	2,695.9	2,695.7	6.0	5.7	-174.32	-9.6	40.6	122.3	110.8	11.45	10.679	
2,800.0	2,797.1	2,795.6	2,795.4	6.2	5.9	-174.40	-10.2	41.8	130.3	118.4	11.89	10.960	
2,900.0	2,896.8	2,895.3	2,895.1	6.5	6.2	-174.46	-10.8	43.0	138.3	126.0	12.33	11.219	
3,000.0	2,996.6	2,994.9	2,994.8	6.7	6.4	-174.52	-11.3	44.3	146.4	133.6	12.77	11.460	
3,100.0	3,096.4	3,094.6	3,094.4	7.0	6.6	-174.57	-11.9	45.5	154.4	141.2	13.21	11.684	
3,200.0	3,196.1	3,194.3	3,194.1	7.2	6.8	-174.62	-12.4	46.8	162.4	148.8	13.66	11.893	
3,300.0	3,295.9	3,294.0	3,293.8	7.5	7.0	-174.66	-13.0	48.0	170.4	156.3	14.10	12.088	
3,400.0	3,395.7	3,393.6	3,393.4	7.7	7.3	-174.70	-13.5	49.2	178.5	163.9	14.54	12.271	
3,500.0	3,495.4	3,493.3	3,493.1	8.0	7.5	-174.74	-14.1	50.5	186.5	171.5	14.99	12.442	
3,600.0	3,595.2	3,593.0	3,592.8	8.2	7.7	-174.77	-14.6	51.7	194.5	179.1	15.43	12.603	
3,700.0	3,695.0	3,692.7	3,692.4	8.5	7.9	-174.80	-15.2	52.9	202.5	186.7	15.88	12.755	
3,800.0	3,794.7	3,792.4	3,792.1	8.7	8.2	-174.82	-15.7	54.2	210.6	194.2	16.33	12.897	
3,900.0	3,894.6	3,892.1	3,891.9	8.9	8.4	-174.83	-16.3	55.4	217.2	200.4	16.77	12.951	
4,000.0	3,994.6	3,994.4	3,994.2	9.1	8.6	-174.76	-16.8	56.5	220.2	203.0	17.19	12.815	
4,100.0	4,094.6	4,094.8	4,094.6	9.3	8.8	91.81	-16.8	56.5	220.2	202.6	17.59	12.521	
4,200.0	4,194.6	4,194.8	4,194.6	9.5	9.0	91.81	-16.8	56.5	220.2	202.2	18.00	12.235	
4,300.0	4,294.6	4,294.8	4,294.6	9.7	9.2	91.81	-16.8	56.5	220.2	201.8	18.41	11.961	
4,400.0	4,394.6	4,394.8	4,394.6	9.9	9.4	91.81	-16.8	56.5	220.2	201.4	18.83	11.697	
4,500.0	4,494.6	4,494.8	4,494.6	10.1	9.6	91.81	-16.8	56.5	220.2	201.0	19.24	11.444	
4,600.0	4,594.6	4,594.8	4,594.6	10.3	9.8	91.81	-16.8	56.5	220.2	200.6	19.66	11.201	
4,700.0	4,694.6	4,694.8	4,694.6	10.5	10.0	91.81	-16.8	56.5	220.2	200.2	20.08	10.968	
4,800.0	4,794.6	4,794.8	4,794.6	10.8	10.2	91.81	-16.8	56.5	220.2	199.7	20.50	10.743	
4,900.0	4,894.6	4,894.8	4,894.6	11.0	10.4	91.81	-16.8	56.5	220.2	199.3	20.92	10.526	
5,000.0	4,994.6	4,994.8	4,994.6	11.2	10.6	91.81	-16.8	56.5	220.2	198.9	21.35	10.318	
5,100.0	5,094.6	5,094.8	5,094.6	11.4	10.9	91.81	-16.8	56.5	220.2	198.5	21.77	10.117	

CC - Min centre to center distance or convergent point, SF - min separation factor, ES - min ellipse separation

Company:	Synergy Resources	Local Co-ordinate Reference:	Well SRC Gies D-15-22CHZ
Project:	SEC.15-T7N-R65W	TVD Reference:	WELL @ 4851.0ft (RKB - 13')
Reference Site:	SRC Gies Pad Sec.15-T7N-R65W	MD Reference:	WELL @ 4851.0ft (RKB - 13')
Site Error:	0.0ft	North Reference:	True
Reference Well:	SRC Gies D-15-22CHZ	Survey Calculation Method:	Minimum Curvature
Well Error:	0.0ft	Output errors are at	2.00 sigma
Reference Wellbore	Wellbore #1	Database:	landmark
Reference Design:	Plan #1 (5-7-14)	Offset TVD Reference:	Offset Datum

Offset Design												Offset Site Error:	0.0 ft
Survey Program: 0-MWD												Offset Well Error:	0.0 ft
Reference		Offset		Semi Major Axis			Distance						
Measured Depth (ft)	Vertical Depth (ft)	Measured Depth (ft)	Vertical Depth (ft)	Reference (ft)	Offset (ft)	Highside Toolface (°)	Offset Wellbore Centre +N/-S (ft)	+E/-W (ft)	Between Centres (ft)	Between Ellipses (ft)	Minimum Separation (ft)	Separation Factor	Warning
5,200.0	5,194.6	5,194.8	5,194.6	11.6	11.1	91.81	-16.8	56.5	220.2	198.0	22.19	9.923	
5,300.0	5,294.6	5,294.8	5,294.6	11.8	11.3	91.81	-16.8	56.5	220.2	197.6	22.62	9.737	
5,400.0	5,394.6	5,394.8	5,394.6	12.0	11.5	91.81	-16.8	56.5	220.2	197.2	23.05	9.556	
5,500.0	5,494.6	5,494.8	5,494.6	12.2	11.7	91.81	-16.8	56.5	220.2	196.8	23.47	9.382	
5,600.0	5,594.6	5,594.8	5,594.6	12.4	11.9	91.81	-16.8	56.5	220.2	196.3	23.90	9.214	
5,700.0	5,694.6	5,694.8	5,694.6	12.6	12.1	91.81	-16.8	56.5	220.2	195.9	24.33	9.052	
5,800.0	5,794.6	5,794.8	5,794.6	12.9	12.3	91.81	-16.8	56.5	220.2	195.5	24.76	8.895	
5,900.0	5,894.6	5,894.8	5,894.6	13.1	12.5	91.81	-16.8	56.5	220.2	195.0	25.19	8.743	
6,000.0	5,994.6	5,994.8	5,994.6	13.3	12.8	91.81	-16.8	56.5	220.2	194.6	25.62	8.596	
6,100.0	6,094.6	6,094.8	6,094.6	13.5	13.0	91.81	-16.8	56.5	220.2	194.2	26.05	8.453	
6,200.0	6,194.6	6,194.8	6,194.6	13.7	13.2	91.81	-16.8	56.5	220.2	193.7	26.49	8.315	
6,300.0	6,294.6	6,294.8	6,294.6	13.9	13.4	91.81	-16.8	56.5	220.2	193.3	26.92	8.181	
6,400.0	6,394.6	6,394.8	6,394.6	14.1	13.6	91.81	-16.8	56.5	220.2	192.9	27.35	8.052	
6,500.0	6,494.6	6,494.8	6,494.6	14.4	13.8	91.81	-16.8	56.5	220.2	192.4	27.79	7.926	
6,516.5	6,511.1	6,511.4	6,511.1	14.4	13.9	91.81	-16.8	56.5	220.2	192.4	27.86	7.906	
6,600.0	6,594.6	6,593.9	6,593.5	14.6	14.0	92.69	-20.2	56.5	220.4	192.2	28.21	7.813	
6,700.0	6,694.6	6,690.0	6,688.2	14.8	14.2	96.76	-35.9	56.6	221.8	193.2	28.63	7.749	
6,800.0	6,794.6	6,780.4	6,774.7	15.0	14.4	-76.41	-62.1	56.7	227.3	198.2	29.05	7.824	
6,900.0	6,894.2	6,865.7	6,852.6	15.2	14.6	-68.73	-96.7	56.8	238.1	208.6	29.43	8.089	
7,000.0	6,992.0	6,950.0	6,925.1	15.4	14.9	-61.94	-139.7	57.0	252.0	222.2	29.71	8.481	
7,100.0	7,085.8	7,028.3	6,987.4	15.6	15.2	-56.45	-187.1	57.2	267.5	237.7	29.80	8.977	
7,200.0	7,174.0	7,106.6	7,044.2	15.8	15.6	-51.85	-240.9	57.4	283.4	253.8	29.67	9.553	
7,300.0	7,254.8	7,183.4	7,093.9	16.1	16.0	-48.13	-299.4	57.6	298.8	269.5	29.35	10.180	
7,400.0	7,326.6	7,258.9	7,136.3	16.5	16.5	-45.20	-361.8	57.8	312.9	284.0	28.92	10.820	
7,500.0	7,388.0	7,333.4	7,171.6	17.1	17.2	-42.93	-427.4	58.0	325.1	296.6	28.48	11.415	
7,600.0	7,437.9	7,407.2	7,199.5	17.8	17.9	-41.25	-495.6	58.3	335.0	306.8	28.17	11.893	
7,700.0	7,475.2	7,480.4	7,220.2	18.7	18.6	-40.09	-565.8	58.6	342.3	314.2	28.12	12.171	
7,800.0	7,499.3	7,550.0	7,233.2	19.7	19.4	-39.41	-634.2	58.8	346.8	318.4	28.44	12.194	
7,900.0	7,509.6	7,625.8	7,239.6	20.9	20.4	-39.17	-709.7	59.1	348.4	319.1	29.27	11.901	
8,000.0	7,510.0	7,717.1	7,240.0	22.1	21.6	-39.18	-800.9	59.4	348.3	317.5	30.82	11.301	
8,100.0	7,510.0	7,817.1	7,240.0	23.5	23.0	-39.17	-900.9	59.8	348.3	315.6	32.64	10.672	
8,200.0	7,510.0	7,917.1	7,240.0	24.9	24.4	-39.17	-1,000.9	60.2	348.3	313.7	34.56	10.076	
8,300.0	7,510.0	8,017.1	7,240.0	26.4	26.0	-39.17	-1,100.9	60.5	348.3	311.7	36.59	9.518	
8,400.0	7,510.0	8,117.1	7,240.0	27.9	27.5	-39.17	-1,200.9	60.9	348.3	309.6	38.69	9.000	
8,500.0	7,510.0	8,217.1	7,240.0	29.5	29.1	-39.17	-1,300.9	61.3	348.3	307.4	40.87	8.521	
8,600.0	7,510.0	8,317.1	7,240.0	31.1	30.8	-39.17	-1,400.9	61.6	348.2	305.1	43.10	8.080	
8,700.0	7,510.0	8,417.1	7,240.0	32.8	32.5	-39.17	-1,500.9	62.0	348.2	302.9	45.38	7.674	
8,800.0	7,510.0	8,517.1	7,240.0	34.5	34.2	-39.16	-1,600.9	62.4	348.2	300.5	47.70	7.300	
8,900.0	7,510.0	8,617.1	7,240.0	36.2	35.9	-39.16	-1,700.9	62.8	348.2	298.2	50.06	6.956	
9,000.0	7,510.0	8,717.1	7,240.0	37.9	37.7	-39.16	-1,800.9	63.1	348.2	295.8	52.45	6.639	
9,100.0	7,510.0	8,817.1	7,240.0	39.7	39.4	-39.16	-1,900.9	63.5	348.2	293.3	54.87	6.346	
9,200.0	7,510.0	8,917.1	7,240.0	41.4	41.2	-39.16	-2,000.9	63.9	348.2	290.9	57.31	6.076	
9,300.0	7,510.0	9,017.1	7,240.0	43.2	43.0	-39.16	-2,100.9	64.2	348.2	288.4	59.77	5.826	
9,400.0	7,510.0	9,117.1	7,240.0	45.0	44.8	-39.16	-2,200.9	64.6	348.2	285.9	62.25	5.593	
9,500.0	7,510.0	9,217.1	7,240.0	46.8	46.6	-39.15	-2,300.9	65.0	348.2	283.4	64.75	5.378	
9,600.0	7,510.0	9,317.1	7,240.0	48.6	48.4	-39.15	-2,400.9	65.3	348.2	280.9	67.26	5.177	
9,700.0	7,510.0	9,417.1	7,240.0	50.4	50.3	-39.15	-2,500.9	65.7	348.2	278.4	69.78	4.990	
9,800.0	7,510.0	9,517.1	7,240.0	52.3	52.1	-39.15	-2,600.9	66.1	348.2	275.9	72.32	4.815	
9,900.0	7,510.0	9,617.1	7,240.0	54.1	54.0	-39.15	-2,700.9	66.5	348.2	273.3	74.86	4.651	
10,000.0	7,510.0	9,717.1	7,240.0	55.9	55.8	-39.15	-2,800.9	66.8	348.2	270.7	77.42	4.497	
10,100.0	7,510.0	9,817.1	7,240.0	57.8	57.7	-39.15	-2,900.9	67.2	348.1	268.2	79.98	4.353	
10,200.0	7,510.0	9,917.1	7,240.0	59.6	59.5	-39.14	-3,000.9	67.6	348.1	265.6	82.55	4.217	

CC - Min centre to center distance or convergent point, SF - min separation factor, ES - min ellipse separation

Company:	Synergy Resources	Local Co-ordinate Reference:	Well SRC Gies D-15-22CHZ
Project:	SEC.15-T7N-R65W	TVD Reference:	WELL @ 4851.0ft (RKB - 13')
Reference Site:	SRC Gies Pad Sec.15-T7N-R65W	MD Reference:	WELL @ 4851.0ft (RKB - 13')
Site Error:	0.0ft	North Reference:	True
Reference Well:	SRC Gies D-15-22CHZ	Survey Calculation Method:	Minimum Curvature
Well Error:	0.0ft	Output errors are at	2.00 sigma
Reference Wellbore	Wellbore #1	Database:	landmark
Reference Design:	Plan #1 (5-7-14)	Offset TVD Reference:	Offset Datum

Offset Design SRC Gies Pad Sec.15-T7N-R65W - SRC Gies D-15-22NHZ - Wellbore #1 - Plan #1 (5-7-14)												Offset Site Error:	0.0 ft
Survey Program: 0-MWD												Offset Well Error:	0.0 ft
Reference		Offset		Semi Major Axis			Distance						
Measured Depth (ft)	Vertical Depth (ft)	Measured Depth (ft)	Vertical Depth (ft)	Reference (ft)	Offset (ft)	Highside Toolface (°)	Offset Wellbore Centre +N/-S (ft)	+E/-W (ft)	Between Centres (ft)	Between Ellipses (ft)	Minimum Separation (ft)	Separation Factor	Warning
10,300.0	7,510.0	10,017.1	7,240.0	61.5	61.4	-39.14	-3,100.9	67.9	348.1	263.0	85.13	4.090	
10,400.0	7,510.0	10,117.1	7,240.0	63.4	63.2	-39.14	-3,200.9	68.3	348.1	260.4	87.71	3.969	
10,500.0	7,510.0	10,217.1	7,240.0	65.2	65.1	-39.14	-3,300.9	68.7	348.1	257.8	90.30	3.855	
10,600.0	7,510.0	10,317.1	7,240.0	67.1	67.0	-39.14	-3,400.9	69.0	348.1	255.2	92.89	3.747	
10,700.0	7,510.0	10,417.1	7,240.0	68.9	68.9	-39.14	-3,500.9	69.4	348.1	252.6	95.49	3.645	
10,800.0	7,510.0	10,517.1	7,240.0	70.8	70.7	-39.14	-3,600.9	69.8	348.1	250.0	98.10	3.548	
10,900.0	7,510.0	10,617.1	7,240.0	72.7	72.6	-39.14	-3,700.9	70.2	348.1	247.4	100.71	3.457	
11,000.0	7,510.0	10,717.1	7,240.0	74.6	74.5	-39.13	-3,800.9	70.5	348.1	244.8	103.32	3.369	
11,100.0	7,510.0	10,817.1	7,240.0	76.5	76.4	-39.13	-3,900.9	70.9	348.1	242.1	105.93	3.286	
11,200.0	7,510.0	10,917.1	7,240.0	78.3	78.3	-39.13	-4,000.9	71.3	348.1	239.5	108.55	3.207	
11,300.0	7,510.0	11,017.1	7,240.0	80.2	80.2	-39.13	-4,100.9	71.6	348.1	236.9	111.17	3.131	
11,400.0	7,510.0	11,117.1	7,240.0	82.1	82.1	-39.13	-4,200.9	72.0	348.1	234.3	113.80	3.059	
11,500.0	7,510.0	11,217.1	7,240.0	84.0	83.9	-39.13	-4,300.9	72.4	348.1	231.6	116.42	2.990	
11,600.0	7,510.0	11,317.1	7,240.0	85.9	85.8	-39.13	-4,400.9	72.7	348.0	229.0	119.05	2.923	
11,700.0	7,510.0	11,417.1	7,240.0	87.8	87.7	-39.12	-4,500.9	73.1	348.0	226.4	121.68	2.860	
11,715.1	7,510.0	11,432.2	7,240.0	88.1	88.0	-39.12	-4,516.0	73.2	348.0	226.0	122.08	2.851 SF	

Company:	Synergy Resources	Local Co-ordinate Reference:	Well SRC Gies D-15-22CHZ
Project:	SEC.15-T7N-R65W	TVD Reference:	WELL @ 4851.0ft (RKB - 13')
Reference Site:	SRC Gies Pad Sec.15-T7N-R65W	MD Reference:	WELL @ 4851.0ft (RKB - 13')
Site Error:	0.0ft	North Reference:	True
Reference Well:	SRC Gies D-15-22CHZ	Survey Calculation Method:	Minimum Curvature
Well Error:	0.0ft	Output errors are at	2.00 sigma
Reference Wellbore	Wellbore #1	Database:	landmark
Reference Design:	Plan #1 (5-7-14)	Offset TVD Reference:	Offset Datum

Offset Design												Offset Site Error:	0.0 ft
Survey Program: 0-MWD												Offset Well Error:	0.0 ft
Reference		Offset		Semi Major Axis			Distance						
Measured Depth (ft)	Vertical Depth (ft)	Measured Depth (ft)	Vertical Depth (ft)	Reference (ft)	Offset (ft)	Highside Toolface (°)	Offset Wellbore Centre +N/-S (ft)	+E/-W (ft)	Between Centres (ft)	Between Ellipses (ft)	Minimum Separation (ft)	Separation Factor	Warning
0.0	0.0	0.0	0.0	0.0	0.0	-87.91	1.5	-40.0	40.0				
100.0	100.0	100.0	100.0	0.1	0.1	-87.91	1.5	-40.0	40.0	39.8	0.22	178.115	
200.0	200.0	200.0	200.0	0.3	0.3	-87.91	1.5	-40.0	40.0	39.4	0.67	59.372	
300.0	300.0	300.0	300.0	0.6	0.6	-87.91	1.5	-40.0	40.0	38.9	1.12	35.623	
400.0	400.0	400.0	400.0	0.8	0.8	-87.91	1.5	-40.0	40.0	38.5	1.57	25.445	
500.0	500.0	500.0	500.0	1.0	1.0	-87.91	1.5	-40.0	40.0	38.0	2.02	19.791	
600.0	600.0	600.0	600.0	1.2	1.2	-87.91	1.5	-40.0	40.0	37.6	2.47	16.192 CC, ES	
700.0	700.0	698.6	698.6	1.5	1.4	-87.99	1.5	-41.7	41.8	38.8	2.91	14.365	
800.0	800.0	796.9	796.8	1.7	1.7	-88.18	1.5	-46.8	46.9	43.6	3.34	14.052	
900.0	900.0	894.8	894.3	1.9	1.9	-88.43	1.5	-55.2	55.5	51.7	3.79	14.649	
1,000.0	1,000.0	993.8	992.7	2.1	2.1	-88.65	1.6	-66.0	66.4	62.2	4.26	15.589	
1,100.0	1,100.0	1,093.2	1,091.5	2.4	2.4	-88.81	1.6	-76.9	77.4	72.7	4.75	16.309	
1,200.0	1,200.0	1,192.6	1,190.3	2.6	2.7	-88.93	1.6	-87.9	88.4	83.2	5.24	16.865	
1,300.0	1,300.0	1,292.0	1,289.0	2.8	2.9	-89.02	1.7	-98.8	99.5	93.7	5.75	17.304	
1,400.0	1,400.0	1,391.4	1,387.8	3.0	3.2	-89.10	1.7	-109.8	110.5	104.2	6.26	17.659	
1,500.0	1,500.0	1,490.9	1,486.8	3.2	3.5	4.32	1.8	-120.7	119.8	113.3	6.43	18.631	
1,600.0	1,599.8	1,590.8	1,586.0	3.4	3.8	4.43	1.8	-131.7	125.6	118.7	6.85	18.338	
1,700.0	1,699.6	1,690.7	1,685.3	3.7	4.1	4.60	1.9	-142.8	129.8	122.5	7.28	17.833	
1,800.0	1,799.4	1,790.6	1,784.6	3.9	4.4	4.75	1.9	-153.8	134.1	126.4	7.72	17.376	
1,900.0	1,899.1	1,890.5	1,883.9	4.1	4.7	4.90	1.9	-164.8	138.3	130.2	8.16	16.961	
2,000.0	1,998.9	1,990.4	1,983.2	4.3	5.0	5.03	2.0	-175.8	142.6	134.0	8.60	16.582	
2,100.0	2,098.7	2,090.3	2,082.5	4.6	5.3	5.16	2.0	-186.8	146.8	137.8	9.04	16.236	
2,200.0	2,198.4	2,190.2	2,181.8	4.8	5.6	5.28	2.1	-197.8	151.1	141.6	9.49	15.919	
2,300.0	2,298.2	2,290.1	2,281.1	5.0	5.9	5.40	2.1	-208.8	155.4	145.4	9.94	15.627	
2,400.0	2,398.0	2,390.0	2,380.4	5.3	6.2	5.50	2.2	-219.8	159.6	149.2	10.39	15.358	
2,500.0	2,497.8	2,489.9	2,479.7	5.5	6.5	5.61	2.2	-230.8	163.9	153.0	10.85	15.109	
2,600.0	2,597.5	2,589.8	2,579.0	5.7	6.8	5.71	2.2	-241.8	168.1	156.8	11.30	14.879	
2,700.0	2,697.3	2,689.8	2,678.3	6.0	7.1	5.80	2.3	-252.8	172.4	160.6	11.76	14.664	
2,800.0	2,797.1	2,789.7	2,777.6	6.2	7.4	5.89	2.3	-263.8	176.6	164.4	12.21	14.465	
2,900.0	2,896.8	2,889.6	2,876.9	6.5	7.7	5.97	2.4	-274.8	180.9	168.2	12.67	14.279	
3,000.0	2,996.6	2,989.5	2,976.2	6.7	8.0	6.05	2.4	-285.8	185.2	172.0	13.13	14.104	
3,100.0	3,096.4	3,089.4	3,075.5	7.0	8.3	6.13	2.5	-296.8	189.4	175.8	13.59	13.941	
3,200.0	3,196.1	3,189.3	3,174.8	7.2	8.6	6.20	2.5	-307.8	193.7	179.6	14.05	13.788	
3,300.0	3,295.9	3,289.2	3,274.1	7.5	8.9	6.27	2.5	-318.8	198.0	183.4	14.51	13.644	
3,400.0	3,395.7	3,389.1	3,373.4	7.7	9.2	6.34	2.6	-329.8	202.2	187.2	14.97	13.509	
3,500.0	3,495.4	3,489.0	3,472.7	8.0	9.6	6.40	2.6	-340.9	206.5	191.0	15.43	13.381	
3,600.0	3,595.2	3,588.9	3,572.0	8.2	9.9	6.47	2.7	-351.9	210.7	194.8	15.89	13.260	
3,700.0	3,695.0	3,688.8	3,671.3	8.5	10.2	6.53	2.7	-362.9	215.0	198.6	16.36	13.145	
3,800.0	3,794.7	3,788.7	3,770.6	8.7	10.5	6.58	2.8	-373.9	219.3	202.4	16.82	13.037	
3,900.0	3,894.6	3,888.6	3,869.9	8.9	10.8	6.61	2.8	-384.9	224.9	207.7	17.26	13.033	
4,000.0	3,994.6	3,988.2	3,968.8	9.1	11.1	6.54	2.8	-395.8	234.0	216.3	17.66	13.253	
4,100.0	4,094.6	4,087.6	4,067.6	9.3	11.4	-87.01	2.9	-406.8	245.0	226.9	18.09	13.543	
4,200.0	4,194.6	4,186.9	4,166.4	9.5	11.7	-87.13	2.9	-417.7	256.0	237.5	18.53	13.812	
4,300.0	4,294.6	4,286.3	4,265.2	9.7	12.0	-87.24	3.0	-428.7	267.0	248.0	18.98	14.068	
4,400.0	4,394.6	4,385.7	4,364.0	9.9	12.3	-87.34	3.0	-439.6	278.0	258.6	19.43	14.312	
4,500.0	4,494.6	4,485.1	4,462.8	10.1	12.6	-87.43	3.1	-450.6	289.0	269.1	19.87	14.544	
4,600.0	4,594.6	4,584.5	4,561.5	10.3	12.9	-87.52	3.1	-461.5	300.0	279.7	20.32	14.766	
4,700.0	4,694.6	4,683.9	4,660.3	10.5	13.2	-87.60	3.1	-472.5	311.0	290.3	20.77	14.978	
4,800.0	4,794.6	4,783.3	4,759.1	10.8	13.5	-87.67	3.2	-483.4	322.0	300.8	21.21	15.180	
4,900.0	4,894.6	4,882.7	4,857.9	11.0	13.8	-87.74	3.2	-494.4	333.1	311.4	21.66	15.374	
5,000.0	4,994.6	4,982.1	4,956.7	11.2	14.1	-87.81	3.3	-505.3	344.1	321.9	22.11	15.560	
5,100.0	5,094.6	5,081.5	5,055.5	11.4	14.4	-87.87	3.3	-516.3	355.1	332.5	22.56	15.738	

CC - Min centre to center distance or convergent point, SF - min separation factor, ES - min ellipse separation

Company:	Synergy Resources	Local Co-ordinate Reference:	Well SRC Gies D-15-22CHZ
Project:	SEC.15-T7N-R65W	TVD Reference:	WELL @ 4851.0ft (RKB - 13')
Reference Site:	SRC Gies Pad Sec.15-T7N-R65W	MD Reference:	WELL @ 4851.0ft (RKB - 13')
Site Error:	0.0ft	North Reference:	True
Reference Well:	SRC Gies D-15-22CHZ	Survey Calculation Method:	Minimum Curvature
Well Error:	0.0ft	Output errors are at	2.00 sigma
Reference Wellbore	Wellbore #1	Database:	landmark
Reference Design:	Plan #1 (5-7-14)	Offset TVD Reference:	Offset Datum

Offset Design												Offset Site Error:	0.0 ft
Survey Program: 0-MWD												Offset Well Error:	0.0 ft
Reference		Offset		Semi Major Axis			Distance						
Measured Depth (ft)	Vertical Depth (ft)	Measured Depth (ft)	Vertical Depth (ft)	Reference (ft)	Offset (ft)	Highside Toolface (°)	Offset Wellbore Centre +N/-S (ft)	+E/-W (ft)	Between Centres (ft)	Between Ellipses (ft)	Minimum Separation (ft)	Separation Factor	Warning
5,200.0	5,194.6	5,180.9	5,154.3	11.6	14.7	-87.93	3.4	-527.2	366.1	343.1	23.01	15.908	
5,300.0	5,294.6	5,280.3	5,253.1	11.8	15.1	-87.98	3.4	-538.2	377.1	353.6	23.46	16.072	
5,400.0	5,394.6	5,379.6	5,351.8	12.0	15.4	-88.03	3.4	-549.1	388.1	364.2	23.91	16.229	
5,500.0	5,494.6	5,479.0	5,450.6	12.2	15.7	-88.08	3.5	-560.1	399.1	374.7	24.37	16.380	
5,600.0	5,594.6	5,578.4	5,549.4	12.4	16.0	-88.13	3.5	-571.0	410.1	385.3	24.82	16.526	
5,700.0	5,694.6	5,677.8	5,648.2	12.6	16.3	-88.17	3.6	-582.0	421.1	395.9	25.27	16.666	
5,800.0	5,794.6	5,788.4	5,758.2	12.9	16.6	-88.21	3.6	-593.2	431.3	405.6	25.73	16.766	
5,900.0	5,894.6	5,906.0	5,875.6	13.1	16.8	-88.24	3.6	-600.7	437.7	411.6	26.15	16.736	
6,000.0	5,994.6	6,024.1	5,993.6	13.3	17.0	-88.25	3.7	-603.4	440.0	413.4	26.58	16.557	
6,100.0	6,094.6	6,125.1	6,094.6	13.5	17.1	-88.25	3.7	-603.4	440.0	413.0	26.99	16.305	
6,200.0	6,194.6	6,225.1	6,194.6	13.7	17.3	-88.25	3.7	-603.4	440.0	412.6	27.40	16.060	
6,300.0	6,294.6	6,325.1	6,294.6	13.9	17.5	-88.25	3.7	-603.4	440.0	412.2	27.81	15.822	
6,400.0	6,394.6	6,425.1	6,394.6	14.1	17.6	-88.25	3.7	-603.4	440.0	411.8	28.23	15.589	
6,500.0	6,494.6	6,525.1	6,494.6	14.4	17.8	-88.25	3.7	-603.4	440.0	411.4	28.64	15.363	
6,600.0	6,594.6	6,625.1	6,594.6	14.6	18.0	-88.25	3.7	-603.4	440.0	411.0	29.06	15.143	
6,700.0	6,694.6	6,725.1	6,694.6	14.8	18.1	-88.25	3.7	-603.4	440.0	410.5	29.47	14.929	
6,800.0	6,794.6	6,825.1	6,794.6	15.0	18.3	91.97	3.7	-603.4	440.0	410.1	29.89	14.721	
6,900.0	6,894.2	6,927.2	6,896.4	15.2	18.5	91.95	-3.7	-603.4	440.0	409.7	30.27	14.537	
7,000.0	6,992.0	7,029.3	6,996.1	15.4	18.6	91.89	-25.5	-603.3	440.0	409.3	30.65	14.358	
7,100.0	7,085.8	7,131.3	7,091.5	15.6	18.8	91.80	-61.2	-603.2	440.0	408.9	31.06	14.163	
7,200.0	7,174.0	7,233.2	7,180.9	15.8	19.0	91.66	-110.0	-603.0	439.9	408.4	31.57	13.933	
7,300.0	7,254.8	7,335.0	7,262.3	16.1	19.3	91.50	-170.8	-602.7	439.9	407.7	32.24	13.644	
7,400.0	7,326.6	7,436.5	7,334.1	16.5	19.6	91.31	-242.4	-602.5	439.9	406.7	33.13	13.277	
7,500.0	7,388.0	7,537.8	7,395.0	17.1	20.1	91.09	-323.3	-602.2	439.8	405.5	34.30	12.825	
7,600.0	7,437.9	7,638.8	7,443.7	17.8	20.6	90.85	-411.7	-601.8	439.8	404.0	35.77	12.295	
7,700.0	7,475.2	7,739.5	7,479.5	18.7	21.4	90.59	-505.8	-601.5	439.8	402.2	37.56	11.708	
7,800.0	7,499.3	7,840.0	7,501.7	19.7	22.3	90.32	-603.7	-601.1	439.8	400.1	39.65	11.090	
7,900.0	7,509.6	7,940.2	7,509.9	20.9	23.3	90.05	-703.4	-600.7	439.8	397.8	41.99	10.473	
7,904.4	7,509.7	7,944.6	7,510.0	20.9	23.3	90.03	-707.8	-600.7	439.8	397.7	42.10	10.446	
8,000.0	7,510.0	8,040.2	7,510.0	22.1	24.4	90.00	-803.4	-600.3	439.8	395.2	44.53	9.875	
8,100.0	7,510.0	8,140.2	7,510.0	23.5	25.7	90.00	-903.4	-600.0	439.8	392.5	47.24	9.310	
8,200.0	7,510.0	8,240.2	7,510.0	24.9	27.0	90.00	-1,003.4	-599.6	439.8	389.7	50.09	8.779	
8,300.0	7,510.0	8,340.2	7,510.0	26.4	28.4	90.00	-1,103.4	-599.2	439.8	386.7	53.08	8.286	
8,400.0	7,510.0	8,440.2	7,510.0	27.9	29.9	90.00	-1,203.4	-598.8	439.8	383.6	56.16	7.830	
8,500.0	7,510.0	8,540.2	7,510.0	29.5	31.4	90.00	-1,303.4	-598.4	439.8	380.4	59.34	7.411	
8,600.0	7,510.0	8,640.2	7,510.0	31.1	32.9	90.00	-1,403.4	-598.1	439.8	377.2	62.59	7.026	
8,700.0	7,510.0	8,740.2	7,510.0	32.8	34.5	90.00	-1,503.4	-597.7	439.8	373.9	65.91	6.672	
8,800.0	7,510.0	8,840.2	7,510.0	34.5	36.1	90.00	-1,603.4	-597.3	439.8	370.5	69.28	6.348	
8,900.0	7,510.0	8,940.2	7,510.0	36.2	37.8	90.00	-1,703.4	-596.9	439.8	367.1	72.70	6.049	
9,000.0	7,510.0	9,040.2	7,510.0	37.9	39.4	90.00	-1,803.4	-596.6	439.8	363.6	76.16	5.774	
9,100.0	7,510.0	9,140.2	7,510.0	39.7	41.1	90.00	-1,903.4	-596.2	439.8	360.1	79.66	5.521	
9,200.0	7,510.0	9,240.2	7,510.0	41.4	42.9	90.00	-2,003.4	-595.8	439.8	356.6	83.19	5.287	
9,300.0	7,510.0	9,340.2	7,510.0	43.2	44.6	90.00	-2,103.4	-595.4	439.8	353.0	86.74	5.070	
9,400.0	7,510.0	9,440.2	7,510.0	45.0	46.3	90.00	-2,203.4	-595.0	439.8	349.5	90.32	4.869	
9,500.0	7,510.0	9,540.2	7,510.0	46.8	48.1	90.00	-2,303.4	-594.7	439.8	345.9	93.92	4.682	
9,600.0	7,510.0	9,640.2	7,510.0	48.6	49.9	90.00	-2,403.4	-594.3	439.8	342.2	97.54	4.509	
9,700.0	7,510.0	9,740.2	7,510.0	50.4	51.7	90.00	-2,503.4	-593.9	439.8	338.6	101.18	4.347	
9,800.0	7,510.0	9,840.2	7,510.0	52.3	53.5	90.00	-2,603.4	-593.5	439.8	335.0	104.83	4.195	
9,900.0	7,510.0	9,940.2	7,510.0	54.1	55.3	90.00	-2,703.4	-593.1	439.8	331.3	108.50	4.053	
10,000.0	7,510.0	10,040.2	7,510.0	55.9	57.1	90.00	-2,803.4	-592.8	439.8	327.6	112.18	3.921	
10,100.0	7,510.0	10,140.2	7,510.0	57.8	58.9	90.00	-2,903.4	-592.4	439.8	323.9	115.87	3.796	
10,200.0	7,510.0	10,240.2	7,510.0	59.6	60.7	90.00	-3,003.4	-592.0	439.8	320.2	119.57	3.678	

CC - Min centre to center distance or convergent point, SF - min separation factor, ES - min ellipse separation

Company:	Synergy Resources	Local Co-ordinate Reference:	Well SRC Gies D-15-22CHZ
Project:	SEC.15-T7N-R65W	TVD Reference:	WELL @ 4851.0ft (RKB - 13')
Reference Site:	SRC Gies Pad Sec.15-T7N-R65W	MD Reference:	WELL @ 4851.0ft (RKB - 13')
Site Error:	0.0ft	North Reference:	True
Reference Well:	SRC Gies D-15-22CHZ	Survey Calculation Method:	Minimum Curvature
Well Error:	0.0ft	Output errors are at	2.00 sigma
Reference Wellbore	Wellbore #1	Database:	landmark
Reference Design:	Plan #1 (5-7-14)	Offset TVD Reference:	Offset Datum

Offset Design SRC Gies Pad Sec.15-T7N-R65W - SRC Gies T-15-22CHZ - Wellbore #1 - Plan #1 (5-7-14)													Offset Site Error:	0.0 ft
Survey Program: 0-MWD													Offset Well Error:	0.0 ft
Reference		Offset		Semi Major Axis			Distance							Warning
Measured Depth	Vertical Depth	Measured Depth	Vertical Depth	Reference	Offset	Highside Toolface	Offset Wellbore Centre		Between Centres	Between Ellipses	Minimum Separation	Separation Factor		
(ft)	(ft)	(ft)	(ft)	(ft)	(ft)	(°)	+N/-S (ft)	+E/-W (ft)	(ft)	(ft)	(ft)			
10,300.0	7,510.0	10,340.2	7,510.0	61.5	62.6	90.00	-3,103.4	-591.6	439.8	316.5	123.28	3.568		
10,400.0	7,510.0	10,440.2	7,510.0	63.4	64.4	90.00	-3,203.4	-591.2	439.8	312.8	126.99	3.463		
10,500.0	7,510.0	10,540.2	7,510.0	65.2	66.2	90.00	-3,303.4	-590.9	439.8	309.1	130.72	3.364		
10,600.0	7,510.0	10,640.2	7,510.0	67.1	68.1	90.00	-3,403.4	-590.5	439.8	305.4	134.45	3.271		
10,700.0	7,510.0	10,740.2	7,510.0	68.9	69.9	90.00	-3,503.4	-590.1	439.8	301.6	138.19	3.183		
10,800.0	7,510.0	10,840.2	7,510.0	70.8	71.8	90.00	-3,603.4	-589.7	439.8	297.9	141.93	3.099		
10,900.0	7,510.0	10,940.2	7,510.0	72.7	73.6	90.00	-3,703.4	-589.3	439.8	294.1	145.68	3.019		
11,000.0	7,510.0	11,040.2	7,510.0	74.6	75.5	90.00	-3,803.4	-589.0	439.8	290.4	149.44	2.943		
11,100.0	7,510.0	11,140.2	7,510.0	76.5	77.4	90.00	-3,903.4	-588.6	439.8	286.6	153.20	2.871		
11,200.0	7,510.0	11,240.2	7,510.0	78.3	79.2	90.00	-4,003.4	-588.2	439.8	282.8	156.96	2.802		
11,300.0	7,510.0	11,340.2	7,510.0	80.2	81.1	90.00	-4,103.4	-587.8	439.8	279.1	160.73	2.736		
11,400.0	7,510.0	11,440.2	7,510.0	82.1	83.0	90.00	-4,203.4	-587.4	439.8	275.3	164.50	2.674		
11,500.0	7,510.0	11,540.2	7,510.0	84.0	84.9	90.00	-4,303.4	-587.1	439.8	271.5	168.28	2.614		
11,600.0	7,510.0	11,640.2	7,510.0	85.9	86.7	90.00	-4,403.4	-586.7	439.8	267.8	172.06	2.556		
11,700.0	7,510.0	11,740.2	7,510.0	87.8	88.5	90.00	-4,503.4	-586.3	439.8	264.1	175.70	2.503		
11,703.0	7,510.0	11,743.2	7,510.0	87.8	88.5	90.00	-4,506.4	-586.3	439.8	264.0	175.80	2.502		
11,715.1	7,510.0	11,751.8	7,510.0	88.1	88.7	90.00	-4,515.0	-586.3	439.8	263.7	176.16	2.497 SF		

Company:	Synergy Resources	Local Co-ordinate Reference:	Well SRC Gies D-15-22CHZ
Project:	SEC.15-T7N-R65W	TVD Reference:	WELL @ 4851.0ft (RKB - 13')
Reference Site:	SRC Gies Pad Sec.15-T7N-R65W	MD Reference:	WELL @ 4851.0ft (RKB - 13')
Site Error:	0.0ft	North Reference:	True
Reference Well:	SRC Gies D-15-22CHZ	Survey Calculation Method:	Minimum Curvature
Well Error:	0.0ft	Output errors are at	2.00 sigma
Reference Wellbore	Wellbore #1	Database:	landmark
Reference Design:	Plan #1 (5-7-14)	Offset TVD Reference:	Offset Datum

Offset Design												Offset Site Error:	0.0 ft
Survey Program: 0-MWD												Offset Well Error:	0.0 ft
Reference		Offset		Semi Major Axis			Distance						
Measured Depth (ft)	Vertical Depth (ft)	Measured Depth (ft)	Vertical Depth (ft)	Reference (ft)	Offset (ft)	Highside Toolface (°)	Offset Wellbore Centre +N/-S (ft)	+E/-W (ft)	Between Centres (ft)	Between Ellipses (ft)	Minimum Separation (ft)	Separation Factor	Warning
0.0	0.0	0.0	0.0	0.0	0.0	-87.90	0.7	-20.0	20.0				
100.0	100.0	100.0	100.0	0.1	0.1	-87.90	0.7	-20.0	20.0	19.8	0.22	89.058	
200.0	200.0	200.0	200.0	0.3	0.3	-87.90	0.7	-20.0	20.0	19.3	0.67	29.686	
300.0	300.0	300.0	300.0	0.6	0.6	-87.90	0.7	-20.0	20.0	18.9	1.12	17.812	
400.0	400.0	400.0	400.0	0.8	0.8	-87.90	0.7	-20.0	20.0	18.4	1.57	12.723	
500.0	500.0	500.0	500.0	1.0	1.0	-87.90	0.7	-20.0	20.0	18.0	2.02	9.895	
600.0	600.0	600.0	600.0	1.2	1.2	-87.90	0.7	-20.0	20.0	17.5	2.47	8.096	
700.0	700.0	700.0	700.0	1.5	1.5	-87.90	0.7	-20.0	20.0	17.1	2.92	6.851	
800.0	800.0	800.0	800.0	1.7	1.7	-87.90	0.7	-20.0	20.0	16.6	3.37	5.937	
900.0	900.0	900.0	900.0	1.9	1.9	-87.90	0.7	-20.0	20.0	16.2	3.82	5.239	
1,000.0	1,000.0	1,000.0	1,000.0	2.1	2.1	-87.90	0.7	-20.0	20.0	15.7	4.27	4.687	
1,100.0	1,100.0	1,100.0	1,100.0	2.4	2.4	-87.90	0.7	-20.0	20.0	15.3	4.72	4.241	
1,200.0	1,200.0	1,200.0	1,200.0	2.6	2.6	-87.90	0.7	-20.0	20.0	14.8	5.17	3.872 CC, ES	
1,300.0	1,300.0	1,299.3	1,299.2	2.8	2.8	-88.12	0.7	-21.7	21.7	16.1	5.60	3.880	
1,400.0	1,400.0	1,398.3	1,398.1	3.0	3.0	-88.60	0.7	-26.9	26.9	20.9	6.03	4.466	
1,500.0	1,500.0	1,497.0	1,496.5	3.2	3.2	4.55	0.6	-35.4	33.8	27.4	6.44	5.256	
1,600.0	1,599.8	1,596.9	1,595.8	3.4	3.4	4.69	0.5	-45.7	39.0	32.1	6.83	5.702	
1,700.0	1,699.6	1,696.8	1,695.2	3.7	3.7	4.98	0.3	-56.0	42.5	35.3	7.24	5.869	
1,800.0	1,799.4	1,796.8	1,794.6	3.9	3.9	5.22	0.2	-66.3	46.1	38.4	7.66	6.014	
1,900.0	1,899.1	1,896.7	1,894.0	4.1	4.2	5.43	0.1	-76.7	49.6	41.5	8.08	6.139	
2,000.0	1,998.9	1,996.6	1,993.4	4.3	4.4	5.61	0.0	-87.0	53.2	44.7	8.51	6.248	
2,100.0	2,098.7	2,096.6	2,092.8	4.6	4.7	5.77	-0.1	-97.3	56.8	47.8	8.94	6.345	
2,200.0	2,198.4	2,196.5	2,192.2	4.8	5.0	5.91	-0.2	-107.6	60.3	50.9	9.38	6.430	
2,300.0	2,298.2	2,296.4	2,291.6	5.0	5.3	6.03	-0.3	-117.9	63.9	54.1	9.82	6.505	
2,400.0	2,398.0	2,396.4	2,391.0	5.3	5.5	6.14	-0.5	-128.3	67.4	57.2	10.26	6.572	
2,500.0	2,497.8	2,496.3	2,490.4	5.5	5.8	6.24	-0.6	-138.6	71.0	60.3	10.70	6.633	
2,600.0	2,597.5	2,596.2	2,589.8	5.7	6.1	6.33	-0.7	-148.9	74.6	63.4	11.15	6.687	
2,700.0	2,697.3	2,696.2	2,689.2	6.0	6.4	6.42	-0.8	-159.2	78.1	66.5	11.60	6.736	
2,800.0	2,797.1	2,796.1	2,788.6	6.2	6.7	6.49	-0.9	-169.5	81.7	69.6	12.05	6.781	
2,900.0	2,896.8	2,896.1	2,888.0	6.5	6.9	6.56	-1.0	-179.9	85.2	72.7	12.50	6.822	
3,000.0	2,996.6	2,996.0	2,987.4	6.7	7.2	6.62	-1.1	-190.2	88.8	75.9	12.95	6.859	
3,100.0	3,096.4	3,095.9	3,086.9	7.0	7.5	6.68	-1.3	-200.5	92.4	79.0	13.40	6.893	
3,200.0	3,196.1	3,195.9	3,186.3	7.2	7.8	6.73	-1.4	-210.8	95.9	82.1	13.85	6.924	
3,300.0	3,295.9	3,295.8	3,285.7	7.5	8.1	6.78	-1.5	-221.1	99.5	85.2	14.31	6.953	
3,400.0	3,395.7	3,395.7	3,385.1	7.7	8.4	6.83	-1.6	-231.4	103.1	88.3	14.77	6.980	
3,500.0	3,495.4	3,495.7	3,484.5	8.0	8.7	6.87	-1.7	-241.8	106.6	91.4	15.22	7.004	
3,600.0	3,595.2	3,595.6	3,583.9	8.2	9.0	6.91	-1.8	-252.1	110.2	94.5	15.68	7.027	
3,700.0	3,695.0	3,695.5	3,683.3	8.5	9.2	6.95	-1.9	-262.4	113.7	97.6	16.14	7.049	
3,800.0	3,794.7	3,795.5	3,782.7	8.7	9.5	6.99	-2.0	-272.7	117.3	100.7	16.60	7.069	
3,900.0	3,894.6	3,895.4	3,882.0	8.9	9.8	6.95	-2.2	-283.0	122.3	105.2	17.03	7.177	
4,000.0	3,994.6	3,995.0	3,981.1	9.1	10.1	6.75	-2.3	-293.3	130.6	113.2	17.43	7.494	
4,100.0	4,094.6	4,094.5	4,080.0	9.3	10.4	-86.97	-2.4	-303.6	140.9	123.1	17.86	7.890	
4,200.0	4,194.6	4,193.9	4,179.0	9.5	10.7	-87.22	-2.5	-313.9	151.3	132.9	18.30	8.264	
4,300.0	4,294.6	4,293.4	4,277.9	9.7	11.0	-87.44	-2.6	-324.1	161.6	142.8	18.74	8.620	
4,400.0	4,394.6	4,392.9	4,376.8	9.9	11.3	-87.63	-2.7	-334.4	171.9	152.7	19.18	8.959	
4,500.0	4,494.6	4,492.3	4,475.8	10.1	11.6	-87.80	-2.8	-344.7	182.2	162.6	19.63	9.282	
4,600.0	4,594.6	4,591.8	4,574.7	10.3	11.9	-87.95	-3.0	-355.0	192.5	172.4	20.07	9.591	
4,700.0	4,694.6	4,691.3	4,673.6	10.5	12.2	-88.09	-3.1	-365.2	202.8	182.3	20.51	9.886	
4,800.0	4,794.6	4,796.2	4,778.2	10.8	12.4	-88.21	-3.2	-375.1	212.2	191.3	20.95	10.129	
4,900.0	4,894.6	4,904.2	4,885.9	11.0	12.7	-88.28	-3.2	-381.4	218.1	196.7	21.37	10.208	
5,000.0	4,994.6	5,012.4	4,994.1	11.2	12.8	-88.30	-3.3	-383.7	220.2	198.4	21.77	10.112	
5,100.0	5,094.6	5,112.9	5,094.6	11.4	13.0	-88.30	-3.3	-383.7	220.2	198.0	22.19	9.925	

CC - Min centre to center distance or convergent point, SF - min separation factor, ES - min ellipse separation

Company:	Synergy Resources	Local Co-ordinate Reference:	Well SRC Gies D-15-22CHZ
Project:	SEC.15-T7N-R65W	TVD Reference:	WELL @ 4851.0ft (RKB - 13')
Reference Site:	SRC Gies Pad Sec.15-T7N-R65W	MD Reference:	WELL @ 4851.0ft (RKB - 13')
Site Error:	0.0ft	North Reference:	True
Reference Well:	SRC Gies D-15-22CHZ	Survey Calculation Method:	Minimum Curvature
Well Error:	0.0ft	Output errors are at	2.00 sigma
Reference Wellbore	Wellbore #1	Database:	landmark
Reference Design:	Plan #1 (5-7-14)	Offset TVD Reference:	Offset Datum

Offset Design												Offset Site Error:	0.0 ft
Survey Program: 0-MWD												Offset Well Error:	0.0 ft
Reference		Offset		Semi Major Axis			Distance						
Measured Depth (ft)	Vertical Depth (ft)	Measured Depth (ft)	Vertical Depth (ft)	Reference (ft)	Offset (ft)	Highside Toolface (°)	Offset Wellbore Centre +N/-S (ft)	+E/-W (ft)	Between Centres (ft)	Between Ellipses (ft)	Minimum Separation (ft)	Separation Factor	Warning
5,200.0	5,194.6	5,212.9	5,194.6	11.6	13.2	-88.30	-3.3	-383.7	220.2	197.6	22.61	9.741	
5,300.0	5,294.6	5,312.9	5,294.6	11.8	13.4	-88.30	-3.3	-383.7	220.2	197.2	23.03	9.563	
5,400.0	5,394.6	5,412.9	5,394.6	12.0	13.6	-88.30	-3.3	-383.7	220.2	196.8	23.45	9.391	
5,500.0	5,494.6	5,512.9	5,494.6	12.2	13.7	-88.30	-3.3	-383.7	220.2	196.3	23.87	9.225	
5,600.0	5,594.6	5,612.9	5,594.6	12.4	13.9	-88.30	-3.3	-383.7	220.2	195.9	24.29	9.065	
5,700.0	5,694.6	5,712.9	5,694.6	12.6	14.1	-88.30	-3.3	-383.7	220.2	195.5	24.72	8.909	
5,800.0	5,794.6	5,812.9	5,794.6	12.9	14.3	-88.30	-3.3	-383.7	220.2	195.1	25.14	8.759	
5,900.0	5,894.6	5,912.9	5,894.6	13.1	14.5	-88.30	-3.3	-383.7	220.2	194.6	25.57	8.613	
6,000.0	5,994.6	6,012.9	5,994.6	13.3	14.7	-88.30	-3.3	-383.7	220.2	194.2	25.99	8.471	
6,100.0	6,094.6	6,112.9	6,094.6	13.5	14.9	-88.30	-3.3	-383.7	220.2	193.8	26.42	8.334	
6,200.0	6,194.6	6,212.9	6,194.6	13.7	15.1	-88.30	-3.3	-383.7	220.2	193.4	26.85	8.201	
6,300.0	6,294.6	6,312.9	6,294.6	13.9	15.3	-88.30	-3.3	-383.7	220.2	192.9	27.28	8.072	
6,400.0	6,394.6	6,412.9	6,394.6	14.1	15.4	-88.30	-3.3	-383.7	220.2	192.5	27.71	7.947	
6,500.0	6,494.6	6,512.9	6,494.6	14.4	15.6	-88.30	-3.3	-383.7	220.2	192.1	28.14	7.826	
6,600.0	6,594.6	6,613.4	6,595.0	14.6	15.8	-89.22	-6.8	-383.7	220.1	191.6	28.55	7.710	
6,631.8	6,626.4	6,645.1	6,626.4	14.6	15.9	-90.22	-10.7	-383.7	220.1	191.4	28.67	7.676	
6,700.0	6,694.6	6,711.4	6,691.6	14.8	16.0	-93.48	-23.2	-383.6	220.5	191.5	28.93	7.620	
6,800.0	6,794.6	6,803.4	6,779.4	15.0	16.2	79.75	-50.4	-383.5	224.2	194.8	29.32	7.646	
6,900.0	6,894.2	6,890.0	6,858.1	15.2	16.4	71.70	-86.1	-383.4	233.3	203.6	29.71	7.852	
7,000.0	6,992.0	6,973.5	6,929.6	15.4	16.6	64.61	-129.3	-383.2	246.1	216.1	29.99	8.206	
7,100.0	7,085.8	7,054.6	6,993.6	15.6	16.8	58.58	-178.9	-383.0	261.1	231.0	30.05	8.689	
7,200.0	7,174.0	7,133.6	7,050.3	15.8	17.1	53.59	-233.9	-382.8	277.0	247.2	29.86	9.278	
7,300.0	7,254.8	7,210.9	7,099.6	16.1	17.4	49.53	-293.5	-382.6	292.7	263.3	29.45	9.939	
7,400.0	7,326.6	7,286.9	7,141.4	16.5	17.9	46.29	-356.9	-382.3	307.4	278.5	28.95	10.620	
7,500.0	7,388.0	7,361.8	7,175.9	17.1	18.4	43.77	-423.3	-382.1	320.4	291.9	28.50	11.243	
7,600.0	7,437.9	7,435.8	7,203.0	17.8	19.0	41.86	-492.2	-381.8	331.3	303.0	28.29	11.713	
7,700.0	7,475.2	7,509.2	7,222.7	18.7	19.7	40.49	-562.9	-381.5	339.7	311.2	28.48	11.928	
7,800.0	7,499.3	7,582.2	7,235.0	19.7	20.5	39.62	-634.7	-381.2	345.3	316.1	29.21	11.823	
7,900.0	7,509.6	7,654.9	7,239.9	20.9	21.4	39.21	-707.2	-381.0	348.1	317.5	30.54	11.397	
8,000.0	7,510.0	7,750.3	7,240.0	22.1	22.6	39.18	-802.6	-380.6	348.3	316.0	32.30	10.784	
8,100.0	7,510.0	7,850.3	7,240.0	23.5	23.9	39.17	-902.6	-380.2	348.3	314.1	34.14	10.201	
8,200.0	7,510.0	7,950.3	7,240.0	24.9	25.3	39.17	-1,002.6	-379.8	348.3	312.2	36.09	9.650	
8,300.0	7,510.0	8,050.3	7,240.0	26.4	26.8	39.17	-1,102.6	-379.4	348.3	310.1	38.13	9.134	
8,400.0	7,510.0	8,150.3	7,240.0	27.9	28.3	39.17	-1,202.6	-379.0	348.3	308.0	40.24	8.654	
8,500.0	7,510.0	8,250.3	7,240.0	29.5	29.9	39.17	-1,302.6	-378.7	348.3	305.8	42.42	8.209	
8,600.0	7,510.0	8,350.3	7,240.0	31.1	31.5	39.17	-1,402.6	-378.3	348.3	303.6	44.66	7.799	
8,700.0	7,510.0	8,450.3	7,240.0	32.8	33.2	39.17	-1,502.6	-377.9	348.3	301.3	46.94	7.420	
8,800.0	7,510.0	8,550.3	7,240.0	34.5	34.8	39.17	-1,602.6	-377.5	348.3	299.0	49.26	7.070	
8,900.0	7,510.0	8,650.3	7,240.0	36.2	36.5	39.17	-1,702.6	-377.1	348.2	296.6	51.61	6.747	
9,000.0	7,510.0	8,750.3	7,240.0	37.9	38.3	39.17	-1,802.6	-376.7	348.2	294.2	54.00	6.449	
9,100.0	7,510.0	8,850.3	7,240.0	39.7	40.0	39.16	-1,902.6	-376.3	348.2	291.8	56.41	6.173	
9,200.0	7,510.0	8,950.3	7,240.0	41.4	41.8	39.16	-2,002.6	-375.9	348.2	289.4	58.85	5.917	
9,300.0	7,510.0	9,050.3	7,240.0	43.2	43.5	39.16	-2,102.6	-375.5	348.2	286.9	61.31	5.680	
9,400.0	7,510.0	9,150.3	7,240.0	45.0	45.3	39.16	-2,202.6	-375.2	348.2	284.4	63.78	5.460	
9,500.0	7,510.0	9,250.3	7,240.0	46.8	47.1	39.16	-2,302.6	-374.8	348.2	281.9	66.27	5.254	
9,600.0	7,510.0	9,350.3	7,240.0	48.6	48.9	39.16	-2,402.6	-374.4	348.2	279.4	68.78	5.063	
9,700.0	7,510.0	9,450.3	7,240.0	50.4	50.7	39.16	-2,502.6	-374.0	348.2	276.9	71.29	4.884	
9,800.0	7,510.0	9,550.3	7,240.0	52.3	52.5	39.16	-2,602.6	-373.6	348.2	274.4	73.82	4.717	
9,900.0	7,510.0	9,650.3	7,240.0	54.1	54.4	39.16	-2,702.6	-373.2	348.2	271.8	76.36	4.560	
10,000.0	7,510.0	9,750.3	7,240.0	55.9	56.2	39.16	-2,802.6	-372.8	348.2	269.3	78.91	4.412	
10,100.0	7,510.0	9,850.3	7,240.0	57.8	58.1	39.15	-2,902.6	-372.4	348.2	266.7	81.47	4.274	
10,200.0	7,510.0	9,950.3	7,240.0	59.6	59.9	39.15	-3,002.6	-372.0	348.2	264.1	84.03	4.143	

CC - Min centre to center distance or convergent point, SF - min separation factor, ES - min ellipse separation

Company:	Synergy Resources	Local Co-ordinate Reference:	Well SRC Gies D-15-22CHZ
Project:	SEC.15-T7N-R65W	TVD Reference:	WELL @ 4851.0ft (RKB - 13')
Reference Site:	SRC Gies Pad Sec.15-T7N-R65W	MD Reference:	WELL @ 4851.0ft (RKB - 13')
Site Error:	0.0ft	North Reference:	True
Reference Well:	SRC Gies D-15-22CHZ	Survey Calculation Method:	Minimum Curvature
Well Error:	0.0ft	Output errors are at	2.00 sigma
Reference Wellbore	Wellbore #1	Database:	landmark
Reference Design:	Plan #1 (5-7-14)	Offset TVD Reference:	Offset Datum

Offset Design												Offset Site Error:	0.0 ft
Survey Program: 0-MWD												Offset Well Error:	0.0 ft
Reference		Offset		Semi Major Axis			Distance						Warning
Measured Depth (ft)	Vertical Depth (ft)	Measured Depth (ft)	Vertical Depth (ft)	Reference (ft)	Offset (ft)	Highside Toolface (°)	Offset Wellbore Centre +N/-S (ft)	+E/-W (ft)	Between Centres (ft)	Between Ellipses (ft)	Minimum Separation (ft)	Separation Factor	
10,300.0	7,510.0	10,050.3	7,240.0	61.5	61.8	39.15	-3,102.6	-371.7	348.2	261.6	86.61	4.020	
10,400.0	7,510.0	10,150.3	7,240.0	63.4	63.6	39.15	-3,202.6	-371.3	348.2	259.0	89.19	3.904	
10,500.0	7,510.0	10,250.3	7,240.0	65.2	65.5	39.15	-3,302.6	-370.9	348.2	256.4	91.77	3.794	
10,600.0	7,510.0	10,350.3	7,240.0	67.1	67.3	39.15	-3,402.6	-370.5	348.2	253.8	94.36	3.690	
10,700.0	7,510.0	10,450.3	7,240.0	68.9	69.2	39.15	-3,502.6	-370.1	348.2	251.2	96.95	3.591	
10,800.0	7,510.0	10,550.3	7,240.0	70.8	71.1	39.15	-3,602.6	-369.7	348.2	248.6	99.55	3.497	
10,900.0	7,510.0	10,650.3	7,240.0	72.7	72.9	39.15	-3,702.6	-369.3	348.1	246.0	102.15	3.408	
11,000.0	7,510.0	10,750.3	7,240.0	74.6	74.8	39.15	-3,802.6	-368.9	348.1	243.4	104.76	3.323	
11,100.0	7,510.0	10,850.3	7,240.0	76.5	76.7	39.14	-3,902.6	-368.5	348.1	240.8	107.37	3.242	
11,200.0	7,510.0	10,950.3	7,240.0	78.3	78.6	39.14	-4,002.6	-368.2	348.1	238.1	109.99	3.165	
11,300.0	7,510.0	11,050.3	7,240.0	80.2	80.5	39.14	-4,102.6	-367.8	348.1	235.5	112.60	3.092	
11,400.0	7,510.0	11,150.3	7,240.0	82.1	82.3	39.14	-4,202.6	-367.4	348.1	232.9	115.22	3.021	
11,500.0	7,510.0	11,250.3	7,240.0	84.0	84.2	39.14	-4,302.6	-367.0	348.1	230.3	117.84	2.954	
11,600.0	7,510.0	11,350.3	7,240.0	85.9	86.1	39.14	-4,402.6	-366.6	348.1	227.6	120.47	2.890	
11,700.0	7,510.0	11,450.3	7,240.0	87.8	88.0	39.14	-4,502.6	-366.2	348.1	225.0	123.10	2.828	
11,713.6	7,510.0	11,463.8	7,240.0	88.0	88.3	39.14	-4,516.1	-366.2	348.1	224.7	123.45	2.820	
11,715.1	7,510.0	11,463.8	7,240.0	88.1	88.3	39.14	-4,516.1	-366.2	348.1	224.6	123.47	2.819 SF	

Company:	Synergy Resources	Local Co-ordinate Reference:	Well SRC Gies D-15-22CHZ
Project:	SEC.15-T7N-R65W	TVD Reference:	WELL @ 4851.0ft (RKB - 13')
Reference Site:	SRC Gies Pad Sec.15-T7N-R65W	MD Reference:	WELL @ 4851.0ft (RKB - 13')
Site Error:	0.0ft	North Reference:	True
Reference Well:	SRC Gies D-15-22CHZ	Survey Calculation Method:	Minimum Curvature
Well Error:	0.0ft	Output errors are at	2.00 sigma
Reference Wellbore	Wellbore #1	Database:	landmark
Reference Design:	Plan #1 (5-7-14)	Offset TVD Reference:	Offset Datum

Reference Depths are relative to WELL @ 4851.0ft (RKB - 13')

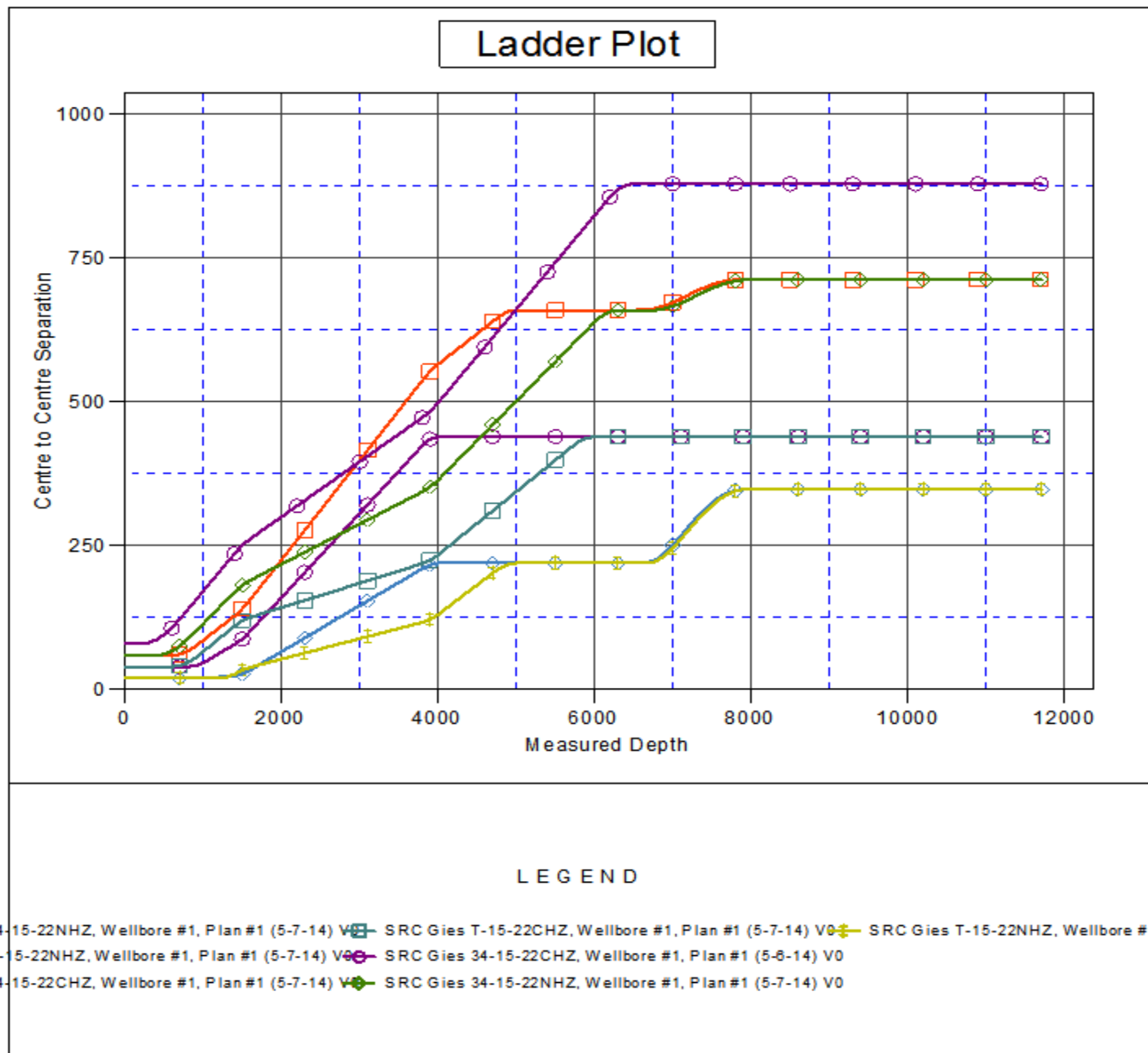
Offset Depths are relative to Offset Datum

Central Meridian is -105.500000 °

Coordinates are relative to: SRC Gies D-15-22CHZ

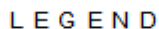
Coordinate System is US State Plane 1983, Colorado Northern Zone

Grid Convergence at Surface is: 0.55°



Reference Depths are relative to WELL @ 4851.0ft (RKB - 13')
Offset Depths are relative to Offset Datum
Central Meridian is -105.500000 °

Coordinates are relative to: SRC Gies D-15-22CHZ
Coordinate System is US State Plane 1983, Colorado Northern Zone
Grid Convergence at Surface is: 0.55°



14-15-22NHZ, Wellbore #1, Plan #1 (5-7-14) V0 SRC Gies T-15-22CHZ, Wellbore #1, Plan #1 (5-7-14) V0 SRC Gies T-15-22NHZ, Wellbore #1, Plan #1 (5-7-14) V0
14-15-22NHZ, Wellbore #1, Plan #1 (5-7-14) V0 SRC Gies 34-15-22CHZ, Wellbore #1, Plan #1 (5-6-14) V0
14-15-22CHZ, Wellbore #1, Plan #1 (5-7-14) V0 SRC Gies 34-15-22NHZ, Wellbore #1, Plan #1 (5-7-14) V0