

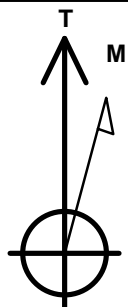
Synergy Resources

Well Name: **SRC Gies T-15-22NHZ**

Surface Location: SRC Gies Pad Sec.15-T7N-R65W
 North American Datum 1983 , US State Plane 1983 , Colorado Northern Zone
 Ground Elevation: 4838.0
 +N/-S +E/-W Northing Easting Latitude Longitude Slot
 0.0 0.0 1450672.99 3237918.80 40.567343 -104.643618
 Original Well Elev WELL @ 4851.0ft (Original Well Elev)

WELLBORE TARGET DETAILS

Name	TVD	+N/-S	+E/-W	Shape
SHL 272'FSL & 1087'FEL, Sec.15	1.0	0.0	0.0	Point
BHL 470'FSL & 1424'FEL, Sec.22	7240.0	-4516.9	-346.5	Point
Landing Pt. 460'FNL & 1441'FEL, Sec.22	7240.0	-721.0	-360.9	Point



Azimuths to True North
 Magnetic North: 8.42°

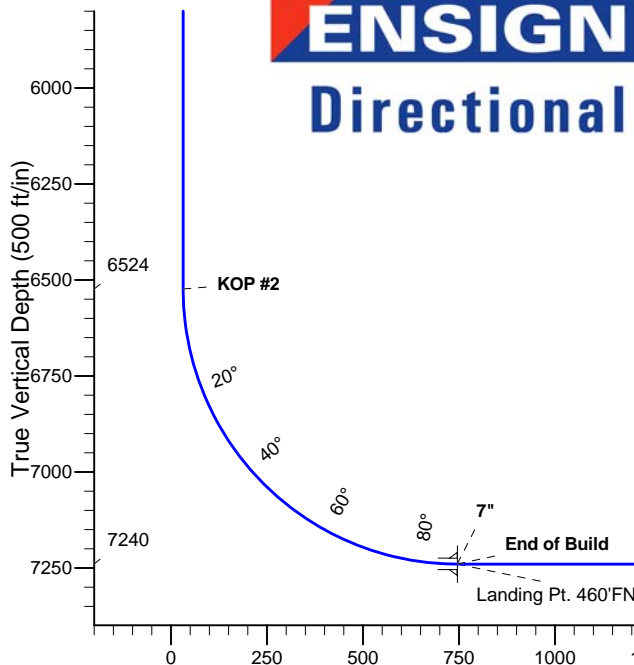
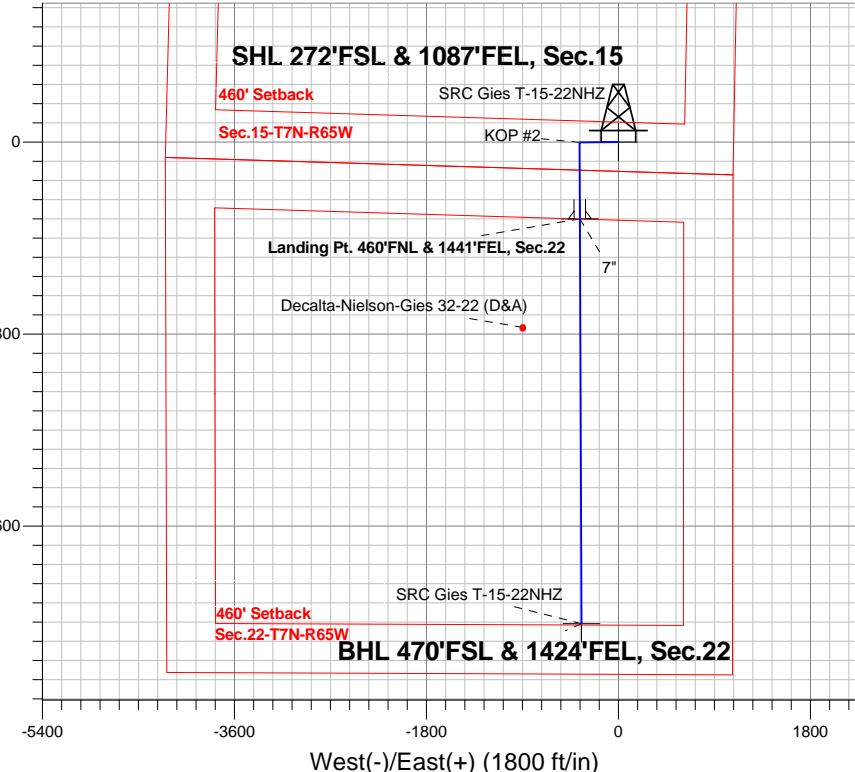
Magnetic Field
 Strength: 52924.3snT
 Dip Angle: 67.10°
 Date: 5/14/2014
 Model: IGRF2010

SRC Gies Pad Sec.15-T7N-R65W
 SRC Gies T-15-22NHZ
 Plan #1 (5-7-14)
 10:29, May 14 2014

ANNOTATIONS

TVD	MD	Annotation
1200.0	1200.0	KOP #1
6523.8	6542.1	KOP #2
7240.0	7667.1	End of Build

South(-)/North(+) (1800 ft/in)



SECTION DETAILS

Sec	MD	Inc	Azi	TVD	+N/-S	+E/-W	DLeg	TFace	VSec	Target
1	0.0	0.00	0.00	0.0	0.0	0.0	0.00	0.00	0.0	
2	1200.0	0.00	0.00	1200.0	0.0	0.0	0.00	0.00	0.0	
3	1496.4	5.93	269.37	1495.8	-0.2	-15.3	2.00	269.37	1.3	
4	4721.9	5.93	269.37	4704.2	-3.8	-348.4	0.00	0.00	30.4	
5	5018.3	0.00	0.00	5000.0	-4.0	-363.7	2.00	180.00	31.8	
6	6542.1	0.00	0.00	6523.8	-4.0	-363.7	0.00	0.00	31.8	
7	7667.1	90.00	179.78	7240.0	-720.2	-360.9	8.00	179.78	745.7	
8	7667.9	90.00	179.78	7240.0	-721.0	-360.9	0.00	0.00	746.5	Landing Pt. 460'FNL & 1441'FEL, Sec.22
9	11463.8	90.00	179.78	7240.0	-4516.9	-346.2	0.00	0.00	4530.1	BHL 470'FSL & 1424'FEL, Sec.22

BHL 470'FSL & 1424'FEL, Sec.22

Vertical Section at 184.38° (500 ft/in)



Synergy Resources

SEC.15-T7N-R65W

SRC Gies Pad Sec.15-T7N-R65W

SRC Gies T-15-22NHZ

Wellbore #1

Plan: Plan #1 (5-7-14)

Standard Planning Report

14 May, 2014

Database:	landmark	Local Co-ordinate Reference: TVD Reference: MD Reference: North Reference: Survey Calculation Method:	Well SRC Gies T-15-22NHZ
Company:	Synergy Resources		WELL @ 4851.0ft (Original Well Elev)
Project:	SEC.15-T7N-R65W		WELL @ 4851.0ft (Original Well Elev)
Site:	SRC Gies Pad Sec.15-T7N-R65W		True
Well:	SRC Gies T-15-22NHZ		Minimum Curvature
Wellbore:	Wellbore #1		
Design:	Plan #1 (5-7-14)		

Project	SEC.15-T7N-R65W, Weld County, CO		
Map System:	US State Plane 1983	System Datum:	Mean Sea Level
Geo Datum:	North American Datum 1983		Using Well Reference Point
Map Zone:	Colorado Northern Zone		Using geodetic scale factor

Site										SRC Gies Pad Sec.15-T7N-R65W																			
Site Position:					Northing:					1,450,674.24 ft					Latitude:					40.567348									
From:					Lat/Long					Easting:					3,237,858.77 ft					Longitude:					-104.643834				
Position Uncertainty:					0.0 ft					Slot Radius:					"					Grid Convergence:					0.55 °				

Well	SRC Gies T-15-22NHZ					
Well Position	+N-S	-1.8 ft	Northing:	1,450,672.99 ft	Latitude:	40.567343
	+E-W	60.0 ft	Easting:	3,237,918.80 ft	Longitude:	-104.643618
Position Uncertainty		0.0 ft	Wellhead Elevation:	ft	Ground Level:	4,838.0 ft

Wellbore #1					
Magnetics	Model Name	Sample Date	Declination (°)	Dip Angle (°)	Field Strength (nT)
	IGRF2010	5/14/2014	8.42	67.10	52,924

Design	Plan #1 (5-7-14)			
Audit Notes:				
Version:	Phase:	PROTOTYPE	Tie On Depth:	0.0
Vertical Section:	Depth From (TVD) (ft)	+N/-S (ft)	+E/-W (ft)	Direction (°)
	0.0	0.0	0.0	184.38

Plan Sections										
Measured Depth (ft)	Inclination (°)	Azimuth (°)	Vertical Depth (ft)	+N/-S (ft)	+E/-W (ft)	Dogleg Rate (°/100ft)	Build Rate (°/100ft)	Turn Rate (°/100ft)	TFO (°)	Target
0.0	0.00	0.00	0.0	0.0	0.0	0.00	0.00	0.00	0.00	
1,200.0	0.00	0.00	1,200.0	0.0	0.0	0.00	0.00	0.00	0.00	
1,496.4	5.93	269.37	1,495.8	-0.2	-15.3	2.00	2.00	0.00	269.37	
4,721.9	5.93	269.37	4,704.2	-3.8	-348.4	0.00	0.00	0.00	0.00	
5,018.3	0.00	0.00	5,000.0	-4.0	-363.7	2.00	-2.00	0.00	180.00	
6,542.1	0.00	0.00	6,523.8	-4.0	-363.7	0.00	0.00	0.00	0.00	
7,667.1	90.00	179.78	7,240.0	-720.2	-360.9	8.00	8.00	0.00	179.78	
7,667.9	90.00	179.78	7,240.0	-721.0	-360.9	0.00	0.00	0.00	0.00	Landing Pt. 460'FN
11,463.8	90.00	179.78	7,240.0	-4,516.9	-346.2	0.00	0.00	0.00	0.00	BHL 470'FSL & 142

Database:	landmark	Local Co-ordinate Reference:	Well SRC Gies T-15-22NHZ
Company:	Synergy Resources	TVD Reference:	WELL @ 4851.0ft (Original Well Elev)
Project:	SEC.15-T7N-R65W	MD Reference:	WELL @ 4851.0ft (Original Well Elev)
Site:	SRC Gies Pad Sec.15-T7N-R65W	North Reference:	True
Well:	SRC Gies T-15-22NHZ	Survey Calculation Method:	Minimum Curvature
Wellbore:	Wellbore #1		
Design:	Plan #1 (5-7-14)		

Planned Survey									
Measured Depth (ft)	Inclination (°)	Azimuth (°)	Vertical Depth (ft)	+N/-S (ft)	+E/-W (ft)	Vertical Section (ft)	Dogleg Rate (°/100ft)	Build Rate (°/100ft)	Turn Rate (°/100ft)
0.0	0.00	0.00	0.0	0.0	0.0	0.0	0.00	0.00	0.00
1.0	0.00	0.00	1.0	0.0	0.0	0.0	0.00	0.00	0.00
SHL 272'FSL & 1087'FEL, Sec.15									
100.0	0.00	0.00	100.0	0.0	0.0	0.0	0.00	0.00	0.00
200.0	0.00	0.00	200.0	0.0	0.0	0.0	0.00	0.00	0.00
300.0	0.00	0.00	300.0	0.0	0.0	0.0	0.00	0.00	0.00
400.0	0.00	0.00	400.0	0.0	0.0	0.0	0.00	0.00	0.00
500.0	0.00	0.00	500.0	0.0	0.0	0.0	0.00	0.00	0.00
600.0	0.00	0.00	600.0	0.0	0.0	0.0	0.00	0.00	0.00
700.0	0.00	0.00	700.0	0.0	0.0	0.0	0.00	0.00	0.00
800.0	0.00	0.00	800.0	0.0	0.0	0.0	0.00	0.00	0.00
900.0	0.00	0.00	900.0	0.0	0.0	0.0	0.00	0.00	0.00
1,000.0	0.00	0.00	1,000.0	0.0	0.0	0.0	0.00	0.00	0.00
1,100.0	0.00	0.00	1,100.0	0.0	0.0	0.0	0.00	0.00	0.00
1,200.0	0.00	0.00	1,200.0	0.0	0.0	0.0	0.00	0.00	0.00
KOP #1									
1,300.0	2.00	269.37	1,300.0	0.0	-1.7	0.2	2.00	2.00	0.00
1,400.0	4.00	269.37	1,399.8	-0.1	-7.0	0.6	2.00	2.00	0.00
1,496.4	5.93	269.37	1,495.8	-0.2	-15.3	1.3	2.00	2.00	0.00
1,500.0	5.93	269.37	1,499.5	-0.2	-15.7	1.4	0.00	0.00	0.00
1,600.0	5.93	269.37	1,598.9	-0.3	-26.0	2.3	0.00	0.00	0.00
1,700.0	5.93	269.37	1,698.4	-0.4	-36.3	3.2	0.00	0.00	0.00
1,800.0	5.93	269.37	1,797.8	-0.5	-46.7	4.1	0.00	0.00	0.00
1,900.0	5.93	269.37	1,897.3	-0.6	-57.0	5.0	0.00	0.00	0.00
2,000.0	5.93	269.37	1,996.8	-0.7	-67.3	5.9	0.00	0.00	0.00
2,100.0	5.93	269.37	2,096.2	-0.9	-77.6	6.8	0.00	0.00	0.00
2,200.0	5.93	269.37	2,195.7	-1.0	-88.0	7.7	0.00	0.00	0.00
2,300.0	5.93	269.37	2,295.2	-1.1	-98.3	8.6	0.00	0.00	0.00
2,400.0	5.93	269.37	2,394.6	-1.2	-108.6	9.5	0.00	0.00	0.00
2,500.0	5.93	269.37	2,494.1	-1.3	-118.9	10.4	0.00	0.00	0.00
2,600.0	5.93	269.37	2,593.6	-1.4	-129.3	11.3	0.00	0.00	0.00
2,700.0	5.93	269.37	2,693.0	-1.5	-139.6	12.2	0.00	0.00	0.00
2,800.0	5.93	269.37	2,792.5	-1.6	-149.9	13.1	0.00	0.00	0.00
2,900.0	5.93	269.37	2,892.0	-1.8	-160.3	14.0	0.00	0.00	0.00
3,000.0	5.93	269.37	2,991.4	-1.9	-170.6	14.9	0.00	0.00	0.00
3,100.0	5.93	269.37	3,090.9	-2.0	-180.9	15.8	0.00	0.00	0.00
3,200.0	5.93	269.37	3,190.4	-2.1	-191.2	16.7	0.00	0.00	0.00
3,300.0	5.93	269.37	3,289.8	-2.2	-201.6	17.6	0.00	0.00	0.00
3,400.0	5.93	269.37	3,389.3	-2.3	-211.9	18.5	0.00	0.00	0.00
3,500.0	5.93	269.37	3,488.8	-2.4	-222.2	19.4	0.00	0.00	0.00
3,600.0	5.93	269.37	3,588.2	-2.6	-232.5	20.3	0.00	0.00	0.00
3,700.0	5.93	269.37	3,687.7	-2.7	-242.9	21.2	0.00	0.00	0.00
3,800.0	5.93	269.37	3,787.2	-2.8	-253.2	22.1	0.00	0.00	0.00
3,900.0	5.93	269.37	3,886.6	-2.9	-263.5	23.0	0.00	0.00	0.00
4,000.0	5.93	269.37	3,986.1	-3.0	-273.8	23.9	0.00	0.00	0.00
4,100.0	5.93	269.37	4,085.6	-3.1	-284.2	24.8	0.00	0.00	0.00
4,200.0	5.93	269.37	4,185.0	-3.2	-294.5	25.7	0.00	0.00	0.00
4,300.0	5.93	269.37	4,284.5	-3.4	-304.8	26.6	0.00	0.00	0.00
4,400.0	5.93	269.37	4,383.9	-3.5	-315.1	27.5	0.00	0.00	0.00
4,500.0	5.93	269.37	4,483.4	-3.6	-325.5	28.4	0.00	0.00	0.00
4,600.0	5.93	269.37	4,582.9	-3.7	-335.8	29.3	0.00	0.00	0.00
4,700.0	5.93	269.37	4,682.3	-3.8	-346.1	30.2	0.00	0.00	0.00
4,721.9	5.93	269.37	4,704.2	-3.8	-348.4	30.4	0.00	0.00	0.00
4,800.0	4.37	269.37	4,781.9	-3.9	-355.4	31.1	2.00	-2.00	0.00

Database:	landmark	Local Co-ordinate Reference:	Well SRC Gies T-15-22NHZ
Company:	Synergy Resources	TVD Reference:	WELL @ 4851.0ft (Original Well Elev)
Project:	SEC.15-T7N-R65W	MD Reference:	WELL @ 4851.0ft (Original Well Elev)
Site:	SRC Gies Pad Sec.15-T7N-R65W	North Reference:	True
Well:	SRC Gies T-15-22NHZ	Survey Calculation Method:	Minimum Curvature
Wellbore:	Wellbore #1		
Design:	Plan #1 (5-7-14)		

Planned Survey									
Measured Depth (ft)	Inclination (°)	Azimuth (°)	Vertical Depth (ft)	+N/-S (ft)	+E/-W (ft)	Vertical Section (ft)	Dogleg Rate (°/100ft)	Build Rate (°/100ft)	Turn Rate (°/100ft)
4,900.0	2.37	269.37	4,881.7	-4.0	-361.3	31.6	2.00	-2.00	0.00
5,000.0	0.37	269.37	4,981.7	-4.0	-363.6	31.8	2.00	-2.00	0.00
5,018.3	0.00	0.00	5,000.0	-4.0	-363.7	31.8	2.00	-2.00	0.00
5,100.0	0.00	0.00	5,081.7	-4.0	-363.7	31.8	0.00	0.00	0.00
5,200.0	0.00	0.00	5,181.7	-4.0	-363.7	31.8	0.00	0.00	0.00
5,300.0	0.00	0.00	5,281.7	-4.0	-363.7	31.8	0.00	0.00	0.00
5,400.0	0.00	0.00	5,381.7	-4.0	-363.7	31.8	0.00	0.00	0.00
5,500.0	0.00	0.00	5,481.7	-4.0	-363.7	31.8	0.00	0.00	0.00
5,600.0	0.00	0.00	5,581.7	-4.0	-363.7	31.8	0.00	0.00	0.00
5,700.0	0.00	0.00	5,681.7	-4.0	-363.7	31.8	0.00	0.00	0.00
5,800.0	0.00	0.00	5,781.7	-4.0	-363.7	31.8	0.00	0.00	0.00
5,900.0	0.00	0.00	5,881.7	-4.0	-363.7	31.8	0.00	0.00	0.00
6,000.0	0.00	0.00	5,981.7	-4.0	-363.7	31.8	0.00	0.00	0.00
6,100.0	0.00	0.00	6,081.7	-4.0	-363.7	31.8	0.00	0.00	0.00
6,200.0	0.00	0.00	6,181.7	-4.0	-363.7	31.8	0.00	0.00	0.00
6,300.0	0.00	0.00	6,281.7	-4.0	-363.7	31.8	0.00	0.00	0.00
6,400.0	0.00	0.00	6,381.7	-4.0	-363.7	31.8	0.00	0.00	0.00
6,500.0	0.00	0.00	6,481.7	-4.0	-363.7	31.8	0.00	0.00	0.00
6,542.1	0.00	0.00	6,523.8	-4.0	-363.7	31.8	0.00	0.00	0.00
KOP #2									
6,600.0	4.63	179.78	6,581.6	-6.3	-363.7	34.1	8.00	8.00	0.00
6,700.0	12.63	179.78	6,680.4	-21.3	-363.6	49.1	8.00	8.00	0.00
6,800.0	20.63	179.78	6,776.2	-49.9	-363.5	77.6	8.00	8.00	0.00
6,900.0	28.63	179.78	6,867.0	-91.6	-363.4	119.1	8.00	8.00	0.00
7,000.0	36.63	179.78	6,951.1	-145.5	-363.2	172.8	8.00	8.00	0.00
7,100.0	44.63	179.78	7,027.0	-210.5	-362.9	237.6	8.00	8.00	0.00
7,200.0	52.63	179.78	7,093.0	-285.5	-362.6	312.4	8.00	8.00	0.00
7,300.0	60.63	179.78	7,148.0	-369.0	-362.3	395.6	8.00	8.00	0.00
7,400.0	68.63	179.78	7,190.8	-459.2	-361.9	485.6	8.00	8.00	0.00
7,500.0	76.63	179.78	7,220.6	-554.6	-361.6	580.6	8.00	8.00	0.00
7,600.0	84.63	179.78	7,236.9	-653.2	-361.2	678.9	8.00	8.00	0.00
7,667.1	90.00	179.78	7,240.0	-720.2	-360.9	745.7	8.00	8.00	0.00
End of Build - 7"									
7,667.9	90.00	179.78	7,240.0	-721.0	-360.9	746.5	0.05	0.05	0.00
Landing Pt. 460'FNL & 1441'FEL, Sec.22									
7,700.0	90.00	179.78	7,240.0	-753.1	-360.8	778.5	0.00	0.00	0.00
7,800.0	90.00	179.78	7,240.0	-853.1	-360.4	878.1	0.00	0.00	0.00
7,900.0	90.00	179.78	7,240.0	-953.1	-360.0	977.8	0.00	0.00	0.00
8,000.0	90.00	179.78	7,240.0	-1,053.1	-359.6	1,077.5	0.00	0.00	0.00
8,100.0	90.00	179.78	7,240.0	-1,153.1	-359.2	1,177.2	0.00	0.00	0.00
8,200.0	90.00	179.78	7,240.0	-1,253.1	-358.8	1,276.8	0.00	0.00	0.00
8,300.0	90.00	179.78	7,240.0	-1,353.1	-358.5	1,376.5	0.00	0.00	0.00
8,400.0	90.00	179.78	7,240.0	-1,453.1	-358.1	1,476.2	0.00	0.00	0.00
8,500.0	90.00	179.78	7,240.0	-1,553.1	-357.7	1,575.9	0.00	0.00	0.00
8,600.0	90.00	179.78	7,240.0	-1,653.1	-357.3	1,675.5	0.00	0.00	0.00
8,700.0	90.00	179.78	7,240.0	-1,753.1	-356.9	1,775.2	0.00	0.00	0.00
8,800.0	90.00	179.78	7,240.0	-1,853.1	-356.5	1,874.9	0.00	0.00	0.00
8,900.0	90.00	179.78	7,240.0	-1,953.1	-356.1	1,974.6	0.00	0.00	0.00
9,000.0	90.00	179.78	7,240.0	-2,053.1	-355.7	2,074.3	0.00	0.00	0.00
9,100.0	90.00	179.78	7,240.0	-2,153.1	-355.3	2,173.9	0.00	0.00	0.00
9,200.0	90.00	179.78	7,240.0	-2,253.1	-355.0	2,273.6	0.00	0.00	0.00
9,300.0	90.00	179.78	7,240.0	-2,353.1	-354.6	2,373.3	0.00	0.00	0.00
9,400.0	90.00	179.78	7,240.0	-2,453.1	-354.2	2,473.0	0.00	0.00	0.00

Database:	landmark	Local Co-ordinate Reference:	Well SRC Gies T-15-22NHZ
Company:	Synergy Resources	TVD Reference:	WELL @ 4851.0ft (Original Well Elev)
Project:	SEC.15-T7N-R65W	MD Reference:	WELL @ 4851.0ft (Original Well Elev)
Site:	SRC Gies Pad Sec.15-T7N-R65W	North Reference:	True
Well:	SRC Gies T-15-22NHZ	Survey Calculation Method:	Minimum Curvature
Wellbore:	Wellbore #1		
Design:	Plan #1 (5-7-14)		

Planned Survey									
Measured Depth (ft)	Inclination (°)	Azimuth (°)	Vertical Depth (ft)	+N/-S (ft)	+E/-W (ft)	Vertical Section (ft)	Dogleg Rate (°/100ft)	Build Rate (°/100ft)	Turn Rate (°/100ft)
9,500.0	90.00	179.78	7,240.0	-2,553.1	-353.8	2,572.6	0.00	0.00	0.00
9,600.0	90.00	179.78	7,240.0	-2,653.1	-353.4	2,672.3	0.00	0.00	0.00
9,700.0	90.00	179.78	7,240.0	-2,753.1	-353.0	2,772.0	0.00	0.00	0.00
9,800.0	90.00	179.78	7,240.0	-2,853.1	-352.6	2,871.7	0.00	0.00	0.00
9,900.0	90.00	179.78	7,240.0	-2,953.1	-352.2	2,971.4	0.00	0.00	0.00
10,000.0	90.00	179.78	7,240.0	-3,053.1	-351.8	3,071.0	0.00	0.00	0.00
10,100.0	90.00	179.78	7,240.0	-3,153.1	-351.5	3,170.7	0.00	0.00	0.00
10,200.0	90.00	179.78	7,240.0	-3,253.1	-351.1	3,270.4	0.00	0.00	0.00
10,300.0	90.00	179.78	7,240.0	-3,353.1	-350.7	3,370.1	0.00	0.00	0.00
10,400.0	90.00	179.78	7,240.0	-3,453.1	-350.3	3,469.7	0.00	0.00	0.00
10,500.0	90.00	179.78	7,240.0	-3,553.1	-349.9	3,569.4	0.00	0.00	0.00
10,600.0	90.00	179.78	7,240.0	-3,653.1	-349.5	3,669.1	0.00	0.00	0.00
10,700.0	90.00	179.78	7,240.0	-3,753.1	-349.1	3,768.8	0.00	0.00	0.00
10,800.0	90.00	179.78	7,240.0	-3,853.1	-348.7	3,868.4	0.00	0.00	0.00
10,900.0	90.00	179.78	7,240.0	-3,953.1	-348.4	3,968.1	0.00	0.00	0.00
11,000.0	90.00	179.78	7,240.0	-4,053.1	-348.0	4,067.8	0.00	0.00	0.00
11,100.0	90.00	179.78	7,240.0	-4,153.1	-347.6	4,167.5	0.00	0.00	0.00
11,200.0	90.00	179.78	7,240.0	-4,253.1	-347.2	4,267.2	0.00	0.00	0.00
11,300.0	90.00	179.78	7,240.0	-4,353.1	-346.8	4,366.8	0.00	0.00	0.00
11,400.0	90.00	179.78	7,240.0	-4,453.1	-346.4	4,466.5	0.00	0.00	0.00
11,463.8	90.00	179.78	7,240.0	-4,516.9	-346.2	4,530.1	0.00	0.00	0.00
BHL 470'FSL & 1424'FEL, Sec.22									

Casing Points				
Measured Depth (ft)	Vertical Depth (ft)	Name	Casing Diameter (")	Hole Diameter (")
7,667.1	7,240.0	7"	7	7-1/2

Plan Annotations				
Measured Depth (ft)	Vertical Depth (ft)	Local Coordinates		Comment
		+N/-S (ft)	+E/-W (ft)	
1,200.0	1,200.0	0.0	0.0	KOP #1
6,542.1	6,523.8	-4.0	-363.7	KOP #2
7,667.1	7,240.0	-720.2	-360.9	End of Build



Synergy Resources

SEC.15-T7N-R65W

SRC Gies Pad Sec.15-T7N-R65W

SRC Gies T-15-22NHZ

Wellbore #1

Plan #1 (5-7-14)

Anticollision Report

14 May, 2014

Company:	Synergy Resources	Local Co-ordinate Reference:	Well SRC Gies T-15-22NHZ
Project:	SEC.15-T7N-R65W	TVD Reference:	WELL @ 4851.0ft (Original Well Elev)
Reference Site:	SRC Gies Pad Sec.15-T7N-R65W	MD Reference:	WELL @ 4851.0ft (Original Well Elev)
Site Error:	0.0ft	North Reference:	True
Reference Well:	SRC Gies T-15-22NHZ	Survey Calculation Method:	Minimum Curvature
Well Error:	0.0ft	Output errors are at	2.00 sigma
Reference Wellbore	Wellbore #1	Database:	landmark
Reference Design:	Plan #1 (5-7-14)	Offset TVD Reference:	Offset Datum

Reference	Plan #1 (5-7-14)
Filter type:	NO GLOBAL FILTER: Using user defined selection & filtering criteria
Interpolation Method:	MD Interval 100.0ft
Depth Range:	Unlimited
Results Limited by:	Maximum center-center distance of 1,000.0ft
Warning Levels Evaluated at:	2.00 Sigma
	<div> <div>Error Model:</div> <div>ISCWSA</div> </div> <div> <div>Scan Method:</div> <div>Closest Approach 3D</div> </div> <div> <div>Error Surface:</div> <div>Elliptical Conic</div> </div>

Survey Tool Program		Date	5/14/2014		
From (ft)	To (ft)	Survey (Wellbore)	Tool Name	Description	
0.0	11,463.8	Plan #1 (5-7-14) (Wellbore #1)	MWD	MWD - Standard	

Summary						
Site Name	Reference Measured Depth (ft)	Offset Measured Depth (ft)	Distance Between Centres (ft)	Distance Between Ellipses (ft)	Separation Factor	Warning
Offset Well - Wellbore - Design						
Existing Wells Pad Sec.15-T7N-R65W						
Decalta-Nielson-Gies 32-22 (D&A) - Wellbore #1 - Wellb	8,682.6	7,222.0	540.8	359.7	2.987	CC
Decalta-Nielson-Gies 32-22 (D&A) - Wellbore #1 - Wellb	8,700.0	7,222.0	541.0	359.7	2.984	ES, SF
SRC Gies Pad Sec.15-T7N-R65W						
SRC Gies 34-15-22CHZ - Wellbore #1 - Plan #1 (5-6-14)	166.3	167.3	60.0	59.5	114.319	CC
SRC Gies 34-15-22CHZ - Wellbore #1 - Plan #1 (5-6-14)	200.0	200.0	60.0	59.4	89.052	ES
SRC Gies 34-15-22CHZ - Wellbore #1 - Plan #1 (5-6-14)	11,463.8	11,810.0	712.7	548.6	4.344	SF
SRC Gies 34-15-22NHZ - Wellbore #1 - Plan #1 (5-7-14)	400.0	400.0	40.0	38.4	25.438	CC, ES
SRC Gies 34-15-22NHZ - Wellbore #1 - Plan #1 (5-7-14)	11,463.8	11,509.0	440.4	263.9	2.496	SF
SRC Gies 44-15-22CHZ - Wellbore #1 - Plan #1 (5-7-14)	800.0	800.0	60.0	56.7	17.808	CC, ES
SRC Gies 44-15-22CHZ - Wellbore #1 - Plan #1 (5-7-14)	11,463.8	11,702.2	712.7	547.7	4.321	SF
SRC Gies 44-15-22NHZ - Wellbore #1 - Plan #1 (5-7-14)	600.0	600.0	79.8	77.3	32.263	CC, ES
SRC Gies 44-15-22NHZ - Wellbore #1 - Plan #1 (5-7-14)	11,463.8	11,437.9	879.7	703.6	4.996	SF
SRC Gies D-15-22CHZ - Wellbore #1 - Plan #1 (5-7-14)	1,200.0	1,200.0	20.0	14.8	3.872	CC, ES
SRC Gies D-15-22CHZ - Wellbore #1 - Plan #1 (5-7-14)	11,463.8	11,713.6	348.1	224.7	2.820	SF
SRC Gies D-15-22NHZ - Wellbore #1 - Plan #1 (5-7-14)	1,000.0	1,000.0	39.7	35.5	9.307	CC, ES
SRC Gies D-15-22NHZ - Wellbore #1 - Plan #1 (5-7-14)	11,463.8	11,430.7	439.3	263.3	2.496	SF
SRC Gies T-15-22CHZ - Wellbore #1 - Plan #1 (5-7-14)	600.0	600.0	20.0	17.5	8.096	CC, ES
SRC Gies T-15-22CHZ - Wellbore #1 - Plan #1 (5-7-14)	11,463.8	11,751.8	348.3	227.6	2.884	SF

Offset Design										Existing Wells Pad Sec.15-T7N-R65W - Decalta-Nielson-Gies 32-22 (D&A) - Wellbore #1 - Wellbore #1				Offset Site Error:		0.0 ft	
Survey Program: 7795-UNKNOWN														Offset Well Error:		0.0 ft	
Reference		Offset		Semi Major Axis		Distance								Warning			
Measured Depth	Vertical Depth	Measured Depth	Vertical Depth	Reference	Offset	Highside Toolface	Offset Wellbore Centre		Between Centres	Between Ellipses	Minimum Separation	Separation Factor					
(ft)	(ft)	(ft)	(ft)	(ft)	(ft)	(°)	+N/-S (ft)	+E/-W (ft)	(ft)	(ft)	(ft)						
7,900.0	7,240.0	7,222.0	7,222.0	24.6	144.4	90.00	-1,737.8	-897.7	951.3	783.0	168.28	5.653					
8,000.0	7,240.0	7,222.0	7,222.0	26.0	144.4	90.00	-1,737.8	-897.7	870.9	701.1	169.77	5.130					
8,100.0	7,240.0	7,222.0	7,222.0	27.5	144.4	90.00	-1,737.8	-897.7	794.9	623.6	171.31	4.640					
8,200.0	7,240.0	7,222.0	7,222.0	29.1	144.4	90.00	-1,737.8	-897.7	724.8	551.9	172.90	4.192					
8,300.0	7,240.0	7,222.0	7,222.0	30.7	144.4	90.00	-1,737.8	-897.7	662.4	487.9	174.53	3.796					
8,400.0	7,240.0	7,222.0	7,222.0	32.3	144.4	90.00	-1,737.8	-897.7	610.2	434.0	176.20	3.463					
8,500.0	7,240.0	7,222.0	7,222.0	34.0	144.4	90.00	-1,737.8	-897.7	570.8	392.9	177.89	3.209					
8,600.0	7,240.0	7,222.0	7,222.0	35.7	144.4	90.00	-1,737.8	-897.7	547.0	367.4	179.60	3.046					
8,682.6	7,240.0	7,222.0	7,222.0	37.1	144.4	90.00	-1,737.8	-897.7	540.8	359.7	181.04	2.987	CC				

Company:	Synergy Resources	Local Co-ordinate Reference:	Well SRC Gies T-15-22NHZ
Project:	SEC.15-T7N-R65W	TVD Reference:	WELL @ 4851.0ft (Original Well Elev)
Reference Site:	SRC Gies Pad Sec.15-T7N-R65W	MD Reference:	WELL @ 4851.0ft (Original Well Elev)
Site Error:	0.0ft	North Reference:	True
Reference Well:	SRC Gies T-15-22NHZ	Survey Calculation Method:	Minimum Curvature
Well Error:	0.0ft	Output errors are at	2.00 sigma
Reference Wellbore	Wellbore #1	Database:	landmark
Reference Design:	Plan #1 (5-7-14)	Offset TVD Reference:	Offset Datum

Offset Design												Offset Site Error:	0.0 ft
Existing Wells Pad Sec.15-T7N-R65W - Decalta-Nielson-Gies 32-22 (D&A) - Wellbore #1 - Wellbore #1												Offset Well Error:	0.0 ft
Survey Program: 7795-UNKNOWN													
Reference		Offset		Semi Major Axis			Distance						
Measured Depth (ft)	Vertical Depth (ft)	Measured Depth (ft)	Vertical Depth (ft)	Reference (ft)	Offset (ft)	Highside Toolface (°)	Offset Wellbore Centre +N/-S (ft)	+E/-W (ft)	Between Centres (ft)	Between Ellipses (ft)	Minimum Separation (ft)	Separation Factor	Warning
8,700.0	7,240.0	7,222.0	7,222.0	37.4	144.4	90.00	-1,737.8	-897.7	541.0	359.7	181.34	2.984	ES, SF
8,800.0	7,240.0	7,222.0	7,222.0	39.1	144.4	90.00	-1,737.8	-897.7	553.4	370.3	183.09	3.022	
8,900.0	7,240.0	7,222.0	7,222.0	40.9	144.4	90.00	-1,737.8	-897.7	582.8	398.0	184.86	3.153	
9,000.0	7,240.0	7,222.0	7,222.0	42.6	144.4	90.00	-1,737.8	-897.7	627.0	440.4	186.64	3.359	
9,100.0	7,240.0	7,222.0	7,222.0	44.4	144.4	90.00	-1,737.8	-897.7	683.1	494.7	188.44	3.625	
9,200.0	7,240.0	7,222.0	7,222.0	46.2	144.4	90.00	-1,737.8	-897.7	748.4	558.2	190.25	3.934	
9,300.0	7,240.0	7,222.0	7,222.0	48.0	144.4	90.00	-1,737.8	-897.7	820.7	628.7	192.06	4.273	
9,400.0	7,240.0	7,222.0	7,222.0	49.8	144.4	90.00	-1,737.8	-897.7	898.4	704.5	193.88	4.634	
9,500.0	7,240.0	7,222.0	7,222.0	51.6	144.4	90.00	-1,737.8	-897.7	980.1	784.4	195.71	5.008	

Company:	Synergy Resources	Local Co-ordinate Reference:	Well SRC Gies T-15-22NHZ
Project:	SEC.15-T7N-R65W	TVD Reference:	WELL @ 4851.0ft (Original Well Elev)
Reference Site:	SRC Gies Pad Sec.15-T7N-R65W	MD Reference:	WELL @ 4851.0ft (Original Well Elev)
Site Error:	0.0ft	North Reference:	True
Reference Well:	SRC Gies T-15-22NHZ	Survey Calculation Method:	Minimum Curvature
Well Error:	0.0ft	Output errors are at	2.00 sigma
Reference Wellbore	Wellbore #1	Database:	landmark
Reference Design:	Plan #1 (5-7-14)	Offset TVD Reference:	Offset Datum

Offset Design													Offset Site Error:	0.0 ft
Survey Program: 0-MWD													Offset Well Error:	0.0 ft
Reference		Offset		Semi Major Axis			Distance							Warning
Measured Depth (ft)	Vertical Depth (ft)	Measured Depth (ft)	Vertical Depth (ft)	Reference (ft)	Offset (ft)	Highside Toolface (°)	Offset Wellbore Centre +N/-S (ft)	+E/-W (ft)	Between Centres (ft)	Between Ellipses (ft)	Minimum Separation (ft)	Separation Factor		
0.0	0.0	1.0	1.0	0.0	0.0	-88.27	1.8	-60.0	60.0	60.0	0.00	N/A		
100.0	100.0	101.0	101.0	0.1	0.1	-88.27	1.8	-60.0	60.0	59.8	0.23	264.473		
166.3	166.3	167.3	167.3	0.3	0.3	-88.27	1.8	-60.0	60.0	59.5	0.53	114.319 CC		
200.0	200.0	200.0	200.0	0.3	0.3	-88.27	1.8	-60.0	60.0	59.4	0.67	89.052 ES		
300.0	300.0	298.9	298.9	0.6	0.6	-88.29	1.8	-61.7	61.8	60.7	1.11	55.579		
400.0	400.0	396.6	396.4	0.8	0.8	-88.36	1.9	-66.8	66.9	65.4	1.55	43.061		
500.0	500.0	493.8	493.3	1.0	1.0	-88.44	2.0	-75.1	75.5	73.5	2.02	37.308		
600.0	600.0	590.3	589.1	1.2	1.3	-88.53	2.2	-86.6	87.4	84.9	2.53	34.609		
700.0	700.0	686.6	684.3	1.5	1.6	-88.62	2.4	-101.2	102.6	99.5	3.07	33.461		
800.0	800.0	785.3	781.6	1.7	2.0	-88.69	2.7	-117.3	118.9	115.2	3.64	32.642		
900.0	900.0	883.9	879.0	1.9	2.3	-88.74	2.9	-133.3	135.2	131.0	4.23	31.978		
1,000.0	1,000.0	982.6	976.3	2.1	2.7	-88.79	3.2	-149.4	151.5	146.7	4.82	31.438		
1,100.0	1,100.0	1,081.3	1,073.6	2.4	3.1	-88.82	3.4	-165.5	167.8	162.4	5.41	30.994		
1,200.0	1,200.0	1,179.9	1,171.0	2.6	3.4	-88.85	3.7	-181.6	184.1	178.1	6.01	30.625		
1,300.0	1,300.0	1,278.8	1,268.6	2.8	3.8	1.77	3.9	-197.7	198.7	193.0	5.68	34.987		
1,400.0	1,399.8	1,378.2	1,366.6	3.0	4.2	1.78	4.1	-213.9	209.8	203.7	6.12	34.280		
1,500.0	1,499.5	1,477.9	1,465.0	3.2	4.6	1.83	4.4	-230.2	217.4	210.9	6.56	33.123		
1,600.0	1,598.9	1,577.7	1,563.5	3.5	4.9	1.89	4.6	-246.4	223.5	216.5	7.02	31.826		
1,700.0	1,698.4	1,677.6	1,662.0	3.7	5.3	1.94	4.9	-262.7	229.5	222.0	7.48	30.670		
1,800.0	1,797.8	1,777.4	1,760.5	3.9	5.7	2.00	5.1	-279.0	235.5	227.6	7.95	29.637		
1,900.0	1,897.3	1,877.2	1,858.9	4.2	6.1	2.05	5.4	-295.3	241.6	233.2	8.41	28.708		
2,000.0	1,996.8	1,977.0	1,957.4	4.5	6.5	2.10	5.6	-311.5	247.6	238.7	8.88	27.870		
2,100.0	2,096.2	2,076.8	2,055.9	4.7	6.9	2.15	5.9	-327.8	253.6	244.3	9.36	27.110		
2,200.0	2,195.7	2,176.6	2,154.4	5.0	7.2	2.19	6.1	-344.1	259.7	249.8	9.83	26.418		
2,300.0	2,295.2	2,276.5	2,252.9	5.3	7.6	2.23	6.4	-360.3	265.7	255.4	10.30	25.786		
2,400.0	2,394.6	2,376.3	2,351.3	5.5	8.0	2.27	6.6	-376.6	271.7	261.0	10.78	25.206		
2,500.0	2,494.1	2,476.1	2,449.8	5.8	8.4	2.31	6.9	-392.9	277.8	266.5	11.26	24.673		
2,600.0	2,593.6	2,575.9	2,548.3	6.1	8.8	2.35	7.1	-409.2	283.8	272.1	11.74	24.182		
2,700.0	2,693.0	2,675.7	2,646.8	6.4	9.2	2.38	7.4	-425.4	289.8	277.6	12.22	23.727		
2,800.0	2,792.5	2,775.5	2,745.3	6.7	9.6	2.42	7.6	-441.7	295.9	283.2	12.70	23.305		
2,900.0	2,892.0	2,875.4	2,843.8	7.0	9.9	2.45	7.8	-458.0	301.9	288.7	13.18	22.912		
3,000.0	2,991.4	2,975.2	2,942.2	7.2	10.3	2.48	8.1	-474.2	307.9	294.3	13.66	22.546		
3,100.0	3,090.9	3,075.0	3,040.7	7.5	10.7	2.51	8.3	-490.5	314.0	299.8	14.14	22.205		
3,200.0	3,190.4	3,174.8	3,139.2	7.8	11.1	2.54	8.6	-506.8	320.0	305.4	14.62	21.884		
3,300.0	3,289.8	3,274.6	3,237.7	8.1	11.5	2.57	8.8	-523.1	326.0	310.9	15.11	21.584		
3,400.0	3,389.3	3,374.5	3,336.2	8.4	11.9	2.60	9.1	-539.3	332.1	316.5	15.59	21.302		
3,500.0	3,488.8	3,474.3	3,434.6	8.7	12.3	2.62	9.3	-555.6	338.1	322.0	16.07	21.036		
3,600.0	3,588.2	3,574.1	3,533.1	9.0	12.6	2.65	9.6	-571.9	344.2	327.6	16.56	20.785		
3,700.0	3,687.7	3,673.9	3,631.6	9.3	13.0	2.67	9.8	-588.1	350.2	333.1	17.04	20.548		
3,800.0	3,787.2	3,773.7	3,730.1	9.6	13.4	2.69	10.1	-604.4	356.2	338.7	17.53	20.324		
3,900.0	3,886.6	3,873.5	3,828.6	9.8	13.8	2.72	10.3	-620.7	362.3	344.2	18.01	20.112		
4,000.0	3,986.1	3,973.4	3,927.1	10.1	14.2	2.74	10.6	-637.0	368.3	349.8	18.50	19.910		
4,100.0	4,085.6	4,073.2	4,025.5	10.4	14.6	2.76	10.8	-653.2	374.3	355.3	18.98	19.719		
4,200.0	4,185.0	4,173.0	4,124.0	10.7	15.0	2.78	11.1	-669.5	380.4	360.9	19.47	19.537		
4,300.0	4,284.5	4,272.8	4,222.5	11.0	15.3	2.80	11.3	-685.8	386.4	366.4	19.96	19.363		
4,400.0	4,383.9	4,372.6	4,321.0	11.3	15.7	2.82	11.5	-702.0	392.4	372.0	20.44	19.198		
4,500.0	4,483.4	4,472.4	4,419.5	11.6	16.1	2.84	11.8	-718.3	398.5	377.5	20.93	19.040		
4,600.0	4,582.9	4,572.3	4,518.0	11.9	16.5	2.86	12.0	-734.6	404.5	383.1	21.41	18.889		
4,700.0	4,682.3	4,672.1	4,616.4	12.2	16.9	2.87	12.3	-750.9	410.5	388.6	21.90	18.745		
4,800.0	4,781.9	4,771.8	4,714.8	12.5	17.3	2.89	12.5	-767.1	417.6	395.3	22.36	18.681		
4,900.0	4,881.7	4,871.3	4,813.0	12.6	17.7	2.89	12.8	-783.3	428.1	405.4	22.75	18.817		
5,000.0	4,981.7	4,970.3	4,910.7	12.8	18.0	2.86	13.0	-799.5	442.1	418.9	23.12	19.124		

CC - Min centre to center distance or convergent point, SF - min separation factor, ES - min ellipse separation

Company:	Synergy Resources	Local Co-ordinate Reference:	Well SRC Gies T-15-22NHZ
Project:	SEC.15-T7N-R65W	TVD Reference:	WELL @ 4851.0ft (Original Well Elev)
Reference Site:	SRC Gies Pad Sec.15-T7N-R65W	MD Reference:	WELL @ 4851.0ft (Original Well Elev)
Site Error:	0.0ft	North Reference:	True
Reference Well:	SRC Gies T-15-22NHZ	Survey Calculation Method:	Minimum Curvature
Well Error:	0.0ft	Output errors are at	2.00 sigma
Reference Wellbore	Wellbore #1	Database:	landmark
Reference Design:	Plan #1 (5-7-14)	Offset TVD Reference:	Offset Datum

Offset Design												Offset Site Error:	0.0 ft
Survey Program: 0-MWD												Offset Well Error:	0.0 ft
Reference		Offset		Semi Major Axis			Distance						
Measured Depth (ft)	Vertical Depth (ft)	Measured Depth (ft)	Vertical Depth (ft)	Reference (ft)	Offset (ft)	Highside Toolface (°)	Offset Wellbore Centre +N/-S (ft)	+E/-W (ft)	Between Centres (ft)	Between Ellipses (ft)	Minimum Separation (ft)	Separation Factor	Warning
5,100.0	5,081.7	5,069.0	5,008.0	13.0	18.4	-87.81	13.3	-815.5	458.3	434.8	23.55	19.464	
5,200.0	5,181.7	5,167.6	5,105.3	13.2	18.8	-87.86	13.5	-831.6	474.6	450.6	24.00	19.778	
5,300.0	5,281.7	5,266.3	5,202.7	13.3	19.2	-87.90	13.8	-847.7	490.9	466.5	24.45	20.081	
5,400.0	5,381.7	5,364.9	5,300.0	13.5	19.6	-87.94	14.0	-863.8	507.2	482.3	24.90	20.372	
5,500.0	5,481.7	5,463.6	5,397.4	13.7	20.0	-87.98	14.2	-879.9	523.5	498.2	25.35	20.651	
5,600.0	5,581.7	5,562.3	5,494.7	13.9	20.3	-88.01	14.5	-896.0	539.8	514.0	25.80	20.921	
5,700.0	5,681.7	5,660.9	5,592.1	14.1	20.7	-88.04	14.7	-912.0	556.1	529.8	26.26	21.180	
5,800.0	5,781.7	5,759.6	5,689.4	14.3	21.1	-88.07	15.0	-928.1	572.4	545.7	26.71	21.430	
5,900.0	5,881.7	5,858.3	5,786.7	14.5	21.5	-88.10	15.2	-944.2	588.7	561.5	27.16	21.671	
6,000.0	5,981.7	5,956.9	5,884.1	14.7	21.9	-88.13	15.5	-960.3	605.0	577.4	27.62	21.904	
6,100.0	6,081.7	6,055.6	5,981.4	14.8	22.2	-88.16	15.7	-976.4	621.3	593.2	28.08	22.129	
6,200.0	6,181.7	6,167.5	6,092.0	15.0	22.6	-88.19	16.0	-994.0	637.1	608.6	28.55	22.317	
6,300.0	6,281.7	6,295.5	6,219.0	15.2	23.0	-88.21	16.2	-1,009.4	649.1	620.1	29.01	22.379	
6,400.0	6,381.7	6,424.7	6,347.8	15.4	23.2	-88.22	16.4	-1,019.2	656.7	627.3	29.44	22.304	
6,500.0	6,481.7	6,554.5	6,477.5	15.6	23.4	-88.23	16.4	-1,023.1	659.8	629.9	29.87	22.086	
6,600.0	6,581.6	6,659.6	6,582.6	15.8	23.5	92.19	16.4	-1,023.2	659.9	629.7	30.25	21.818	
6,700.0	6,680.4	6,758.4	6,681.4	16.0	23.6	93.41	16.4	-1,023.2	660.7	630.0	30.61	21.580	
6,800.0	6,776.2	6,854.1	6,777.2	16.2	23.8	95.59	16.4	-1,023.2	663.0	632.0	31.00	21.390	
6,900.0	6,867.0	6,958.0	6,880.9	16.4	23.9	98.50	11.1	-1,023.2	667.9	636.5	31.42	21.256	
7,000.0	6,951.1	7,070.9	6,991.3	16.6	24.0	101.41	-11.4	-1,023.1	674.6	642.7	31.89	21.155	
7,100.0	7,027.0	7,191.9	7,104.3	17.0	24.2	104.17	-54.4	-1,022.9	682.5	650.1	32.40	21.066	
7,200.0	7,093.0	7,321.9	7,215.7	17.4	24.4	106.72	-121.1	-1,022.7	691.1	658.1	32.99	20.951	
7,300.0	7,148.0	7,461.3	7,319.7	18.0	24.7	108.94	-213.6	-1,022.3	699.3	665.6	33.70	20.749	
7,400.0	7,190.8	7,609.7	7,408.4	18.7	25.2	110.69	-332.1	-1,021.9	706.2	671.5	34.65	20.380	
7,500.0	7,220.6	7,765.2	7,473.2	19.6	25.9	111.83	-473.2	-1,021.4	710.8	674.9	35.95	19.772	
7,600.0	7,236.9	7,924.9	7,506.5	20.7	26.9	112.26	-629.0	-1,020.8	712.6	674.9	37.70	18.901	
7,699.7	7,241.5	8,051.2	7,510.0	21.9	28.0	112.07	-755.2	-1,020.3	711.7	671.9	39.77	17.896	
7,700.0	7,240.0	8,051.6	7,510.0	21.9	28.0	112.19	-755.6	-1,020.3	712.3	672.5	39.74	17.923	
7,800.0	7,240.0	8,151.6	7,510.0	23.2	29.0	112.19	-855.6	-1,019.9	712.3	670.1	42.14	16.901	
7,900.0	7,240.0	8,251.6	7,510.0	24.6	30.1	112.19	-955.6	-1,019.5	712.3	667.6	44.71	15.931	
8,000.0	7,240.0	8,351.6	7,510.0	26.0	31.2	112.19	-1,055.6	-1,019.2	712.3	664.9	47.41	15.023	
8,100.0	7,240.0	8,451.6	7,510.0	27.5	32.5	112.19	-1,155.6	-1,018.8	712.3	662.1	50.23	14.181	
8,200.0	7,240.0	8,551.6	7,510.0	29.1	33.8	112.19	-1,255.6	-1,018.4	712.3	659.2	53.14	13.404	
8,300.0	7,240.0	8,651.6	7,510.0	30.7	35.2	112.19	-1,355.6	-1,018.0	712.3	656.2	56.13	12.690	
8,400.0	7,240.0	8,751.6	7,510.0	32.3	36.6	112.19	-1,455.6	-1,017.6	712.3	653.1	59.20	12.033	
8,500.0	7,240.0	8,851.6	7,510.0	34.0	38.1	112.19	-1,555.6	-1,017.3	712.3	650.0	62.32	11.431	
8,600.0	7,240.0	8,951.6	7,510.0	35.7	39.6	112.19	-1,655.6	-1,016.9	712.3	646.9	65.49	10.878	
8,700.0	7,240.0	9,051.6	7,510.0	37.4	41.2	112.19	-1,755.6	-1,016.5	712.4	643.7	68.70	10.369	
8,800.0	7,240.0	9,151.6	7,510.0	39.1	42.7	112.19	-1,855.6	-1,016.1	712.4	640.4	71.95	9.900	
8,900.0	7,240.0	9,251.6	7,510.0	40.9	44.4	112.19	-1,955.6	-1,015.8	712.4	637.1	75.24	9.468	
9,000.0	7,240.0	9,351.6	7,510.0	42.6	46.0	112.19	-2,055.6	-1,015.4	712.4	633.8	78.55	9.069	
9,100.0	7,240.0	9,451.6	7,510.0	44.4	47.6	112.18	-2,155.6	-1,015.0	712.4	630.5	81.89	8.700	
9,200.0	7,240.0	9,551.6	7,510.0	46.2	49.3	112.18	-2,255.6	-1,014.6	712.4	627.2	85.25	8.357	
9,300.0	7,240.0	9,651.6	7,510.0	48.0	51.0	112.18	-2,355.6	-1,014.2	712.4	623.8	88.63	8.038	
9,400.0	7,240.0	9,751.6	7,510.0	49.8	52.7	112.18	-2,455.6	-1,013.9	712.4	620.4	92.02	7.742	
9,500.0	7,240.0	9,851.6	7,510.0	51.6	54.5	112.18	-2,555.6	-1,013.5	712.4	617.0	95.44	7.465	
9,600.0	7,240.0	9,951.6	7,510.0	53.5	56.2	112.18	-2,655.6	-1,013.1	712.4	613.6	98.86	7.206	
9,700.0	7,240.0	10,051.6	7,510.0	55.3	58.0	112.18	-2,755.6	-1,012.7	712.5	610.2	102.30	6.964	
9,800.0	7,240.0	10,151.6	7,510.0	57.1	59.7	112.18	-2,855.6	-1,012.4	712.5	606.7	105.75	6.737	
9,900.0	7,240.0	10,251.6	7,510.0	59.0	61.5	112.18	-2,955.6	-1,012.0	712.5	603.3	109.21	6.524	
10,000.0	7,240.0	10,351.6	7,510.0	60.8	63.3	112.18	-3,055.6	-1,011.6	712.5	599.8	112.68	6.323	
10,100.0	7,240.0	10,451.6	7,510.0	62.7	65.1	112.18	-3,155.6	-1,011.2	712.5	596.3	116.16	6.134	

CC - Min centre to center distance or convergent point, SF - min separation factor, ES - min ellipse separation

Company:	Synergy Resources	Local Co-ordinate Reference:	Well SRC Gies T-15-22NHZ
Project:	SEC.15-T7N-R65W	TVD Reference:	WELL @ 4851.0ft (Original Well Elev)
Reference Site:	SRC Gies Pad Sec.15-T7N-R65W	MD Reference:	WELL @ 4851.0ft (Original Well Elev)
Site Error:	0.0ft	North Reference:	True
Reference Well:	SRC Gies T-15-22NHZ	Survey Calculation Method:	Minimum Curvature
Well Error:	0.0ft	Output errors are at	2.00 sigma
Reference Wellbore	Wellbore #1	Database:	landmark
Reference Design:	Plan #1 (5-7-14)	Offset TVD Reference:	Offset Datum

Offset Design SRC Gies Pad Sec.15-T7N-R65W - SRC Gies 34-15-22CHZ - Wellbore #1 - Plan #1 (5-6-14)												Offset Site Error:	0.0 ft
Survey Program: 0-MWD												Offset Well Error:	0.0 ft
Reference		Offset		Semi Major Axis			Distance						Warning
Measured Depth (ft)	Vertical Depth (ft)	Measured Depth (ft)	Vertical Depth (ft)	Reference (ft)	Offset (ft)	Highside Toolface (°)	Offset Wellbore Centre +N/-S (ft)	+E/-W (ft)	Between Centres (ft)	Between Ellipses (ft)	Minimum Separation (ft)	Separation Factor	
10,200.0	7,240.0	10,551.6	7,510.0	64.5	66.9	112.18	-3,255.6	-1,010.8	712.5	592.9	119.65	5.955	
10,300.0	7,240.0	10,651.6	7,510.0	66.4	68.7	112.18	-3,355.6	-1,010.5	712.5	589.4	123.14	5.786	
10,400.0	7,240.0	10,751.6	7,510.0	68.3	70.5	112.18	-3,455.6	-1,010.1	712.5	585.9	126.64	5.626	
10,500.0	7,240.0	10,851.6	7,510.0	70.1	72.3	112.18	-3,555.6	-1,009.7	712.5	582.4	130.15	5.475	
10,600.0	7,240.0	10,951.6	7,510.0	72.0	74.1	112.18	-3,655.6	-1,009.3	712.5	578.9	133.66	5.331	
10,700.0	7,240.0	11,051.6	7,510.0	73.9	76.0	112.18	-3,755.6	-1,009.0	712.6	575.4	137.17	5.195	
10,800.0	7,240.0	11,151.6	7,510.0	75.7	77.8	112.18	-3,855.6	-1,008.6	712.6	571.9	140.70	5.065	
10,900.0	7,240.0	11,251.6	7,510.0	77.6	79.6	112.18	-3,955.6	-1,008.2	712.6	568.4	144.22	4.941	
11,000.0	7,240.0	11,351.6	7,510.0	79.5	81.5	112.18	-4,055.6	-1,007.8	712.6	564.8	147.75	4.823	
11,100.0	7,240.0	11,451.6	7,510.0	81.4	83.3	112.18	-4,155.6	-1,007.4	712.6	561.3	151.28	4.710	
11,200.0	7,240.0	11,551.6	7,510.0	83.3	85.2	112.18	-4,255.6	-1,007.1	712.6	557.8	154.82	4.603	
11,300.0	7,240.0	11,651.6	7,510.0	85.2	87.0	112.18	-4,355.6	-1,006.7	712.6	554.3	158.36	4.500	
11,400.0	7,240.0	11,751.6	7,510.0	87.1	88.9	112.18	-4,455.6	-1,006.3	712.6	550.7	161.90	4.402	
11,434.5	7,240.0	11,786.1	7,510.0	87.7	89.5	112.18	-4,490.1	-1,006.2	712.6	549.5	163.13	4.368	
11,463.8	7,240.0	11,810.0	7,510.0	88.3	90.0	112.18	-4,514.0	-1,006.1	712.7	548.6	164.07	4.344 SF	

Company:	Synergy Resources	Local Co-ordinate Reference:	Well SRC Gies T-15-22NHZ
Project:	SEC.15-T7N-R65W	TVD Reference:	WELL @ 4851.0ft (Original Well Elev)
Reference Site:	SRC Gies Pad Sec.15-T7N-R65W	MD Reference:	WELL @ 4851.0ft (Original Well Elev)
Site Error:	0.0ft	North Reference:	True
Reference Well:	SRC Gies T-15-22NHZ	Survey Calculation Method:	Minimum Curvature
Well Error:	0.0ft	Output errors are at	2.00 sigma
Reference Wellbore	Wellbore #1	Database:	landmark
Reference Design:	Plan #1 (5-7-14)	Offset TVD Reference:	Offset Datum

Offset Design													Offset Site Error:	0.0 ft
Survey Program: 0-MWD													Offset Well Error:	0.0 ft
Reference		Offset		Semi Major Axis			Distance							Warning
Measured Depth (ft)	Vertical Depth (ft)	Measured Depth (ft)	Vertical Depth (ft)	Reference (ft)	Offset (ft)	Highside Toolface (°)	Offset Wellbore Centre +N/-S (ft)	+E/-W (ft)	Between Centres (ft)	Between Ellipses (ft)	Minimum Separation (ft)	Separation Factor		
0.0	0.0	0.0	0.0	0.0	0.0	-88.44	1.1	-40.0	40.0					
100.0	100.0	100.0	100.0	0.1	0.1	-88.44	1.1	-40.0	40.0	39.8	0.22	178.063		
200.0	200.0	200.0	200.0	0.3	0.3	-88.44	1.1	-40.0	40.0	39.3	0.67	59.354		
300.0	300.0	300.0	300.0	0.6	0.6	-88.44	1.1	-40.0	40.0	38.9	1.12	35.613		
400.0	400.0	400.0	400.0	0.8	0.8	-88.44	1.1	-40.0	40.0	38.4	1.57	25.438 CC, ES		
500.0	500.0	498.6	498.6	1.0	1.0	-88.48	1.1	-41.7	41.7	39.7	2.01	20.784		
600.0	600.0	596.9	596.8	1.2	1.2	-88.57	1.2	-46.8	46.9	44.5	2.44	19.188		
700.0	700.0	694.8	694.3	1.5	1.4	-88.69	1.3	-55.2	55.5	52.6	2.90	19.120		
800.0	800.0	792.0	790.8	1.7	1.7	-88.80	1.4	-66.8	67.4	64.0	3.39	19.910		
900.0	900.0	891.0	888.8	1.9	2.0	-88.89	1.6	-80.4	81.2	77.3	3.91	20.780		
1,000.0	1,000.0	990.1	987.0	2.1	2.3	-88.96	1.7	-94.0	94.9	90.5	4.44	21.381		
1,100.0	1,100.0	1,089.1	1,085.1	2.4	2.6	-89.01	1.9	-107.6	108.6	103.7	4.98	21.814		
1,200.0	1,200.0	1,188.2	1,183.2	2.6	2.9	-89.04	2.0	-121.2	122.4	116.9	5.53	22.138		
1,300.0	1,300.0	1,287.4	1,281.5	2.8	3.3	1.57	2.2	-134.8	134.4	128.8	5.58	24.083		
1,400.0	1,399.8	1,387.1	1,380.2	3.0	3.6	1.60	2.3	-148.5	142.9	136.9	6.01	23.783		
1,500.0	1,499.5	1,486.9	1,479.1	3.2	3.9	1.66	2.5	-162.2	148.0	141.5	6.44	22.972		
1,600.0	1,598.9	1,586.9	1,578.1	3.5	4.3	1.74	2.7	-176.0	151.4	144.5	6.89	21.979		
1,700.0	1,698.4	1,686.8	1,677.1	3.7	4.6	1.81	2.8	-189.7	154.9	147.5	7.34	21.094		
1,800.0	1,797.8	1,786.8	1,776.1	3.9	5.0	1.89	3.0	-203.4	158.3	150.5	7.80	20.303		
1,900.0	1,897.3	1,886.7	1,875.1	4.2	5.3	1.96	3.1	-217.2	161.7	153.5	8.26	19.592		
2,000.0	1,996.8	1,986.6	1,974.1	4.5	5.6	2.02	3.3	-230.9	165.2	156.5	8.72	18.951		
2,100.0	2,096.2	2,086.6	2,073.1	4.7	6.0	2.09	3.4	-244.6	168.6	159.4	9.18	18.369		
2,200.0	2,195.7	2,186.5	2,172.1	5.0	6.3	2.15	3.6	-258.3	172.1	162.4	9.64	17.840		
2,300.0	2,295.2	2,286.5	2,271.1	5.3	6.7	2.21	3.8	-272.1	175.5	165.4	10.11	17.357		
2,400.0	2,394.6	2,386.4	2,370.1	5.5	7.0	2.26	3.9	-285.8	179.0	168.4	10.58	16.914		
2,500.0	2,494.1	2,486.3	2,469.1	5.8	7.4	2.32	4.1	-299.5	182.4	171.3	11.05	16.507		
2,600.0	2,593.6	2,586.3	2,568.0	6.1	7.7	2.37	4.2	-313.3	185.8	174.3	11.52	16.132		
2,700.0	2,693.0	2,686.2	2,667.0	6.4	8.0	2.42	4.4	-327.0	189.3	177.3	11.99	15.785		
2,800.0	2,792.5	2,786.2	2,766.0	6.7	8.4	2.47	4.6	-340.7	192.7	180.3	12.46	15.463		
2,900.0	2,892.0	2,886.1	2,865.0	7.0	8.7	2.52	4.7	-354.4	196.2	183.2	12.94	15.163		
3,000.0	2,991.4	2,986.0	2,964.0	7.2	9.1	2.56	4.9	-368.2	199.6	186.2	13.41	14.884		
3,100.0	3,090.9	3,086.0	3,063.0	7.5	9.4	2.61	5.0	-381.9	203.0	189.2	13.88	14.624		
3,200.0	3,190.4	3,185.9	3,162.0	7.8	9.8	2.65	5.2	-395.6	206.5	192.1	14.36	14.380		
3,300.0	3,289.8	3,285.9	3,261.0	8.1	10.1	2.69	5.3	-409.4	209.9	195.1	14.84	14.151		
3,400.0	3,389.3	3,385.8	3,360.0	8.4	10.5	2.73	5.5	-423.1	213.4	198.1	15.31	13.936		
3,500.0	3,488.8	3,485.7	3,459.0	8.7	10.8	2.77	5.7	-436.8	216.8	201.0	15.79	13.734		
3,600.0	3,588.2	3,585.7	3,558.0	9.0	11.1	2.81	5.8	-450.6	220.3	204.0	16.26	13.543		
3,700.0	3,687.7	3,685.6	3,657.0	9.3	11.5	2.84	6.0	-464.3	223.7	207.0	16.74	13.362		
3,800.0	3,787.2	3,785.6	3,756.0	9.6	11.8	2.88	6.1	-478.0	227.2	209.9	17.22	13.192		
3,900.0	3,886.6	3,885.5	3,855.0	9.8	12.2	2.91	6.3	-491.7	230.6	212.9	17.70	13.030		
4,000.0	3,986.1	3,985.4	3,953.9	10.1	12.5	2.94	6.5	-505.5	234.0	215.9	18.17	12.877		
4,100.0	4,085.6	4,085.4	4,052.9	10.4	12.9	2.98	6.6	-519.2	237.5	218.8	18.65	12.731		
4,200.0	4,185.0	4,185.3	4,151.9	10.7	13.2	3.01	6.8	-532.9	240.9	221.8	19.13	12.593		
4,300.0	4,284.5	4,285.3	4,250.9	11.0	13.6	3.04	6.9	-546.7	244.4	224.8	19.61	12.461		
4,400.0	4,383.9	4,385.2	4,349.9	11.3	13.9	3.07	7.1	-560.4	247.8	227.7	20.09	12.335		
4,500.0	4,483.4	4,485.2	4,448.9	11.6	14.3	3.10	7.2	-574.1	251.3	230.7	20.57	12.215		
4,600.0	4,582.9	4,585.1	4,547.9	11.9	14.6	3.12	7.4	-587.8	254.7	233.7	21.05	12.101		
4,700.0	4,682.3	4,685.0	4,646.9	12.2	15.0	3.15	7.6	-601.6	258.1	236.6	21.53	11.991		
4,800.0	4,781.9	4,784.9	4,745.8	12.5	15.3	3.17	7.7	-615.3	262.7	240.7	21.98	11.948		
4,900.0	4,881.7	4,884.6	4,844.6	12.6	15.6	3.15	7.9	-629.0	270.6	248.2	22.38	12.087		
5,000.0	4,981.7	4,984.0	4,943.0	12.8	16.0	3.10	8.0	-642.6	281.9	259.2	22.75	12.391		
5,100.0	5,081.7	5,083.0	5,041.1	13.0	16.3	-87.61	8.2	-656.2	295.6	272.4	23.18	12.753		

CC - Min centre to center distance or convergent point, SF - min separation factor, ES - min ellipse separation

Company:	Synergy Resources	Local Co-ordinate Reference:	Well SRC Gies T-15-22NHZ
Project:	SEC.15-T7N-R65W	TVD Reference:	WELL @ 4851.0ft (Original Well Elev)
Reference Site:	SRC Gies Pad Sec.15-T7N-R65W	MD Reference:	WELL @ 4851.0ft (Original Well Elev)
Site Error:	0.0ft	North Reference:	True
Reference Well:	SRC Gies T-15-22NHZ	Survey Calculation Method:	Minimum Curvature
Well Error:	0.0ft	Output errors are at	2.00 sigma
Reference Wellbore	Wellbore #1	Database:	landmark
Reference Design:	Plan #1 (5-7-14)	Offset TVD Reference:	Offset Datum

Offset Design												Offset Site Error:	0.0 ft
Survey Program: 0-MWD												Offset Well Error:	0.0 ft
Reference		Offset		Semi Major Axis			Distance						Warning
Measured Depth (ft)	Vertical Depth (ft)	Measured Depth (ft)	Vertical Depth (ft)	Reference (ft)	Offset (ft)	Highside Toolface (°)	Offset Wellbore Centre +N/-S (ft)	+E/-W (ft)	Between Centres (ft)	Between Ellipses (ft)	Minimum Separation (ft)	Separation Factor	
5,200.0	5,181.7	5,182.1	5,139.2	13.2	16.7	-87.69	8.3	-669.8	309.3	285.7	23.62	13.095	
5,300.0	5,281.7	5,281.1	5,237.3	13.3	17.0	-87.76	8.5	-683.5	323.1	299.0	24.06	13.425	
5,400.0	5,381.7	5,380.2	5,335.4	13.5	17.4	-87.82	8.7	-697.1	336.8	312.3	24.51	13.741	
5,500.0	5,481.7	5,479.2	5,433.6	13.7	17.7	-87.88	8.8	-710.7	350.5	325.6	24.96	14.046	
5,600.0	5,581.7	5,578.3	5,531.7	13.9	18.0	-87.94	9.0	-724.3	364.3	338.9	25.40	14.340	
5,700.0	5,681.7	5,677.3	5,629.8	14.1	18.4	-87.99	9.1	-737.9	378.0	352.1	25.85	14.623	
5,800.0	5,781.7	5,776.4	5,727.9	14.3	18.7	-88.04	9.3	-751.5	391.7	365.4	26.30	14.897	
5,900.0	5,881.7	5,875.4	5,826.0	14.5	19.1	-88.08	9.4	-765.1	405.5	378.7	26.74	15.160	
6,000.0	5,981.7	5,977.5	5,927.2	14.7	19.4	-88.12	9.6	-779.0	419.1	391.9	27.20	15.412	
6,100.0	6,081.7	6,094.2	6,043.1	14.8	19.7	-88.16	9.8	-791.9	430.1	402.5	27.63	15.569	
6,200.0	6,181.7	6,211.8	6,160.4	15.0	19.9	-88.18	9.8	-800.0	437.0	409.0	28.04	15.585	
6,300.0	6,281.7	6,329.8	6,278.4	15.2	20.1	-88.19	9.9	-803.3	439.9	411.4	28.45	15.459	
6,400.0	6,381.7	6,433.1	6,381.7	15.4	20.2	-88.19	9.9	-803.4	439.9	411.1	28.85	15.247	
6,500.0	6,481.7	6,533.1	6,481.7	15.6	20.4	-88.19	9.9	-803.4	439.9	410.7	29.25	15.040	
6,600.0	6,581.6	6,634.4	6,582.9	15.8	20.5	92.03	7.4	-803.4	439.9	410.3	29.63	14.849	
6,700.0	6,680.4	6,736.6	6,683.8	16.0	20.7	91.98	-8.2	-803.3	439.9	409.9	29.99	14.667	
6,800.0	6,776.2	6,838.7	6,781.4	16.2	20.8	91.90	-38.0	-803.2	439.9	409.5	30.39	14.476	
6,900.0	6,867.0	6,940.7	6,873.6	16.4	21.0	91.78	-81.4	-803.1	439.9	409.0	30.85	14.258	
7,000.0	6,951.1	7,042.6	6,958.7	16.6	21.2	91.62	-137.2	-802.9	439.8	408.4	31.44	13.989	
7,100.0	7,027.0	7,144.2	7,034.8	17.0	21.4	91.43	-204.5	-802.6	439.8	407.6	32.23	13.646	
7,200.0	7,093.0	7,245.6	7,100.5	17.4	21.8	91.22	-281.6	-802.3	439.8	406.5	33.27	13.218	
7,300.0	7,148.0	7,346.8	7,154.6	18.0	22.2	90.98	-367.1	-802.0	439.8	405.2	34.62	12.703	
7,400.0	7,190.8	7,447.7	7,195.9	18.7	22.8	90.72	-459.0	-801.7	439.8	403.5	36.29	12.119	
7,500.0	7,220.6	7,548.3	7,223.9	19.6	23.5	90.45	-555.5	-801.3	439.8	401.5	38.27	11.492	
7,515.0	7,223.9	7,563.4	7,227.0	19.8	23.6	90.41	-570.3	-801.2	439.8	401.1	38.60	11.392	
7,600.0	7,236.9	7,648.6	7,238.1	20.7	24.4	90.17	-654.7	-800.9	439.8	399.2	40.53	10.851	
7,700.0	7,240.0	7,748.7	7,240.0	21.9	25.4	90.00	-754.7	-800.6	439.8	396.8	43.01	10.224	
7,800.0	7,240.0	7,848.7	7,240.0	23.2	26.5	90.00	-854.7	-800.2	439.8	394.1	45.66	9.631	
7,900.0	7,240.0	7,948.7	7,240.0	24.6	27.7	90.00	-954.7	-799.8	439.8	391.3	48.48	9.072	
8,000.0	7,240.0	8,048.7	7,240.0	26.0	29.0	90.00	-1,054.7	-799.4	439.8	388.4	51.43	8.552	
8,100.0	7,240.0	8,148.7	7,240.0	27.5	30.3	90.00	-1,154.7	-799.1	439.8	385.3	54.49	8.072	
8,200.0	7,240.0	8,248.7	7,240.0	29.1	31.8	90.00	-1,254.7	-798.7	439.8	382.2	57.64	7.631	
8,300.0	7,240.0	8,348.7	7,240.0	30.7	33.2	90.00	-1,354.7	-798.3	439.9	379.0	60.88	7.225	
8,400.0	7,240.0	8,448.7	7,240.0	32.3	34.8	90.00	-1,454.7	-797.9	439.9	375.7	64.18	6.854	
8,500.0	7,240.0	8,548.7	7,240.0	34.0	36.3	90.00	-1,554.7	-797.6	439.9	372.3	67.54	6.513	
8,600.0	7,240.0	8,648.7	7,240.0	35.7	37.9	90.00	-1,654.7	-797.2	439.9	369.0	70.95	6.200	
8,700.0	7,240.0	8,748.7	7,240.0	37.4	39.5	90.00	-1,754.7	-796.8	439.9	365.5	74.41	5.912	
8,800.0	7,240.0	8,848.7	7,240.0	39.1	41.2	90.00	-1,854.7	-796.4	439.9	362.0	77.90	5.648	
8,900.0	7,240.0	8,948.7	7,240.0	40.9	42.9	90.00	-1,954.7	-796.1	440.0	358.5	81.42	5.403	
9,000.0	7,240.0	9,048.7	7,240.0	42.6	44.6	90.00	-2,054.7	-795.7	440.0	355.0	84.98	5.178	
9,100.0	7,240.0	9,148.7	7,240.0	44.4	46.3	90.00	-2,154.7	-795.3	440.0	351.4	88.55	4.969	
9,200.0	7,240.0	9,248.7	7,240.0	46.2	48.0	90.00	-2,254.7	-795.0	440.0	347.8	92.15	4.775	
9,300.0	7,240.0	9,348.7	7,240.0	48.0	49.7	90.00	-2,354.7	-794.6	440.0	344.2	95.77	4.595	
9,400.0	7,240.0	9,448.7	7,240.0	49.8	51.5	90.00	-2,454.7	-794.2	440.0	340.6	99.41	4.427	
9,500.0	7,240.0	9,548.7	7,240.0	51.6	53.3	90.00	-2,554.7	-793.8	440.0	337.0	103.06	4.270	
9,600.0	7,240.0	9,648.7	7,240.0	53.5	55.0	90.00	-2,654.7	-793.5	440.1	333.3	106.72	4.123	
9,700.0	7,240.0	9,748.7	7,240.0	55.3	56.8	90.00	-2,754.7	-793.1	440.1	329.7	110.40	3.986	
9,800.0	7,240.0	9,848.7	7,240.0	57.1	58.6	90.00	-2,854.7	-792.7	440.1	326.0	114.09	3.857	
9,900.0	7,240.0	9,948.7	7,240.0	59.0	60.4	90.00	-2,954.7	-792.3	440.1	322.3	117.79	3.736	
10,000.0	7,240.0	10,048.7	7,240.0	60.8	62.2	90.00	-3,054.7	-792.0	440.1	318.6	121.50	3.622	
10,100.0	7,240.0	10,148.7	7,240.0	62.7	64.1	90.00	-3,154.7	-791.6	440.1	314.9	125.22	3.515	
10,200.0	7,240.0	10,248.7	7,240.0	64.5	65.9	90.00	-3,254.7	-791.2	440.2	311.2	128.94	3.414	

CC - Min centre to center distance or convergent point, SF - min separation factor, ES - min ellipse separation

Company:	Synergy Resources	Local Co-ordinate Reference:	Well SRC Gies T-15-22NHZ
Project:	SEC.15-T7N-R65W	TVD Reference:	WELL @ 4851.0ft (Original Well Elev)
Reference Site:	SRC Gies Pad Sec.15-T7N-R65W	MD Reference:	WELL @ 4851.0ft (Original Well Elev)
Site Error:	0.0ft	North Reference:	True
Reference Well:	SRC Gies T-15-22NHZ	Survey Calculation Method:	Minimum Curvature
Well Error:	0.0ft	Output errors are at	2.00 sigma
Reference Wellbore	Wellbore #1	Database:	landmark
Reference Design:	Plan #1 (5-7-14)	Offset TVD Reference:	Offset Datum

Offset Design SRC Gies Pad Sec.15-T7N-R65W - SRC Gies 34-15-22NHZ - Wellbore #1 - Plan #1 (5-7-14)												Offset Site Error:	0.0 ft
Survey Program: 0-MWD												Offset Well Error:	0.0 ft
Reference		Offset		Semi Major Axis			Distance						
Measured Depth (ft)	Vertical Depth (ft)	Measured Depth (ft)	Vertical Depth (ft)	Reference (ft)	Offset (ft)	Highside Toolface (°)	Offset Wellbore Centre +N/-S (ft)	+E/-W (ft)	Between Centres (ft)	Between Ellipses (ft)	Minimum Separation (ft)	Separation Factor	Warning
10,300.0	7,240.0	10,348.7	7,240.0	66.4	67.7	90.00	-3,354.7	-790.8	440.2	307.5	132.67	3.318	
10,400.0	7,240.0	10,448.7	7,240.0	68.3	69.6	90.00	-3,454.7	-790.5	440.2	303.8	136.41	3.227	
10,500.0	7,240.0	10,548.7	7,240.0	70.1	71.4	90.00	-3,554.7	-790.1	440.2	300.0	140.16	3.141	
10,600.0	7,240.0	10,648.7	7,240.0	72.0	73.2	90.00	-3,654.7	-789.7	440.2	296.3	143.91	3.059	
10,700.0	7,240.0	10,748.7	7,240.0	73.9	75.1	90.00	-3,754.7	-789.4	440.2	292.6	147.66	2.981	
10,800.0	7,240.0	10,848.7	7,240.0	75.7	76.9	90.00	-3,854.7	-789.0	440.2	288.8	151.43	2.907	
10,900.0	7,240.0	10,948.7	7,240.0	77.6	78.8	90.00	-3,954.7	-788.6	440.3	285.1	155.19	2.837	
11,000.0	7,240.0	11,048.7	7,240.0	79.5	80.7	90.00	-4,054.7	-788.2	440.3	281.3	158.96	2.770	
11,100.0	7,240.0	11,148.7	7,240.0	81.4	82.5	90.00	-4,154.7	-787.9	440.3	277.6	162.73	2.706	
11,200.0	7,240.0	11,248.7	7,240.0	83.3	84.4	90.00	-4,254.7	-787.5	440.3	273.8	166.51	2.644	
11,300.0	7,240.0	11,348.7	7,240.0	85.2	86.3	90.00	-4,354.7	-787.1	440.3	270.0	170.29	2.586	
11,400.0	7,240.0	11,448.7	7,240.0	87.1	88.1	90.00	-4,454.7	-786.7	440.3	266.3	174.07	2.530	
11,435.1	7,240.0	11,483.7	7,240.0	87.7	88.8	90.00	-4,489.8	-786.6	440.3	264.9	175.40	2.511	
11,463.8	7,240.0	11,509.0	7,240.0	88.3	89.3	90.00	-4,515.0	-786.5	440.4	263.9	176.42	2.496 SF	

Company:	Synergy Resources	Local Co-ordinate Reference:	Well SRC Gies T-15-22NHZ
Project:	SEC.15-T7N-R65W	TVD Reference:	WELL @ 4851.0ft (Original Well Elev)
Reference Site:	SRC Gies Pad Sec.15-T7N-R65W	MD Reference:	WELL @ 4851.0ft (Original Well Elev)
Site Error:	0.0ft	North Reference:	True
Reference Well:	SRC Gies T-15-22NHZ	Survey Calculation Method:	Minimum Curvature
Well Error:	0.0ft	Output errors are at	2.00 sigma
Reference Wellbore	Wellbore #1	Database:	landmark
Reference Design:	Plan #1 (5-7-14)	Offset TVD Reference:	Offset Datum

Offset Design													Offset Site Error:	0.0 ft
Survey Program: 0-MWD													Offset Well Error:	0.0 ft
Reference		Offset		Semi Major Axis			Distance							Warning
Measured Depth (ft)	Vertical Depth (ft)	Measured Depth (ft)	Vertical Depth (ft)	Reference (ft)	Offset (ft)	Highside Tooface (°)	Offset Wellbore Centre +N/-S (ft)	+E/-W (ft)	Between Centres (ft)	Between Ellipses (ft)	Minimum Separation (ft)	Separation Factor		
0.0	0.0	0.0	0.0	0.0	0.0	91.74	-1.8	60.0	60.0					
100.0	100.0	100.0	100.0	0.1	0.1	91.74	-1.8	60.0	60.0	59.8	0.22	267.119		
200.0	200.0	200.0	200.0	0.3	0.3	91.74	-1.8	60.0	60.0	59.4	0.67	89.040		
300.0	300.0	300.0	300.0	0.6	0.6	91.74	-1.8	60.0	60.0	58.9	1.12	53.424		
400.0	400.0	400.0	400.0	0.8	0.8	91.74	-1.8	60.0	60.0	58.5	1.57	38.160		
500.0	500.0	500.0	500.0	1.0	1.0	91.74	-1.8	60.0	60.0	58.0	2.02	29.680		
600.0	600.0	600.0	600.0	1.2	1.2	91.74	-1.8	60.0	60.0	57.6	2.47	24.284		
700.0	700.0	700.0	700.0	1.5	1.5	91.74	-1.8	60.0	60.0	57.1	2.92	20.548		
800.0	800.0	800.0	800.0	1.7	1.7	91.74	-1.8	60.0	60.0	56.7	3.37	17.808 CC, ES		
900.0	900.0	897.9	897.9	1.9	1.9	91.84	-2.0	61.7	61.7	57.9	3.80	16.237		
1,000.0	1,000.0	995.6	995.4	2.1	2.1	92.11	-2.5	66.7	66.9	62.6	4.23	15.812		
1,100.0	1,100.0	1,094.5	1,094.1	2.4	2.3	92.44	-3.2	74.3	74.6	69.9	4.67	15.979		
1,200.0	1,200.0	1,194.2	1,193.4	2.6	2.5	92.72	-3.9	82.2	82.6	77.4	5.12	16.117		
1,300.0	1,300.0	1,293.7	1,292.6	2.8	2.8	-176.47	-4.7	90.1	92.2	86.7	5.51	16.736		
1,400.0	1,399.8	1,392.9	1,391.5	3.0	3.0	-176.44	-5.4	97.9	105.4	99.5	5.92	17.804		
1,500.0	1,499.5	1,491.5	1,489.8	3.2	3.3	-176.52	-6.1	105.8	122.0	115.7	6.33	19.286		
1,600.0	1,598.9	1,589.8	1,587.8	3.5	3.5	-176.63	-6.9	113.6	140.2	133.4	6.74	20.785		
1,700.0	1,698.4	1,688.1	1,685.8	3.7	3.8	-176.71	-7.6	121.3	158.4	151.2	7.17	22.091		
1,800.0	1,797.8	1,786.5	1,783.8	3.9	4.0	-176.78	-8.3	129.1	176.5	168.9	7.60	23.239		
1,900.0	1,897.3	1,884.8	1,881.8	4.2	4.3	-176.84	-9.1	136.9	194.7	186.7	8.03	24.253		
2,000.0	1,996.8	1,983.1	1,979.9	4.5	4.5	-176.88	-9.8	144.7	212.9	204.4	8.46	25.154		
2,100.0	2,096.2	2,081.5	2,077.9	4.7	4.8	-176.92	-10.5	152.5	231.1	222.2	8.90	25.959		
2,200.0	2,195.7	2,179.8	2,175.9	5.0	5.0	-176.96	-11.3	160.3	249.3	239.9	9.34	26.682		
2,300.0	2,295.2	2,278.1	2,273.9	5.3	5.3	-176.99	-12.0	168.1	267.5	257.7	9.78	27.334		
2,400.0	2,394.6	2,376.5	2,371.9	5.5	5.5	-177.01	-12.7	175.9	285.6	275.4	10.23	27.925		
2,500.0	2,494.1	2,474.8	2,470.0	5.8	5.8	-177.03	-13.4	183.7	303.8	293.2	10.67	28.463		
2,600.0	2,593.6	2,573.1	2,568.0	6.1	6.1	-177.05	-14.2	191.5	322.0	310.9	11.12	28.954		
2,700.0	2,693.0	2,671.5	2,666.0	6.4	6.3	-177.07	-14.9	199.3	340.2	328.6	11.57	29.404		
2,800.0	2,792.5	2,769.8	2,764.0	6.7	6.6	-177.09	-15.6	207.0	358.4	346.4	12.02	29.818		
2,900.0	2,892.0	2,868.1	2,862.0	7.0	6.8	-177.10	-16.4	214.8	376.6	364.1	12.47	30.199		
3,000.0	2,991.4	2,966.5	2,960.1	7.2	7.1	-177.11	-17.1	222.6	394.8	381.8	12.92	30.553		
3,100.0	3,090.9	3,064.8	3,058.1	7.5	7.4	-177.12	-17.8	230.4	412.9	399.6	13.37	30.880		
3,200.0	3,190.4	3,163.1	3,156.1	7.8	7.6	-177.13	-18.6	238.2	431.1	417.3	13.82	31.184		
3,300.0	3,289.8	3,261.5	3,254.1	8.1	7.9	-177.14	-19.3	246.0	449.3	435.0	14.28	31.468		
3,400.0	3,389.3	3,359.8	3,352.1	8.4	8.1	-177.15	-20.0	253.8	467.5	452.8	14.73	31.733		
3,500.0	3,488.8	3,458.1	3,450.2	8.7	8.4	-177.16	-20.8	261.6	485.7	470.5	15.19	31.981		
3,600.0	3,588.2	3,556.4	3,548.2	9.0	8.7	-177.17	-21.5	269.4	503.9	488.2	15.64	32.214		
3,700.0	3,687.7	3,654.8	3,646.2	9.3	8.9	-177.18	-22.2	277.2	522.0	505.9	16.10	32.433		
3,800.0	3,787.2	3,753.1	3,744.2	9.6	9.2	-177.18	-23.0	285.0	540.2	523.7	16.55	32.638		
3,900.0	3,886.6	3,868.4	3,859.3	9.8	9.5	-177.20	-23.7	292.8	557.3	540.3	17.01	32.768		
4,000.0	3,986.1	3,991.8	3,982.6	10.1	9.7	-177.24	-24.0	296.2	570.4	552.9	17.47	32.656		
4,100.0	4,085.6	4,094.8	4,085.6	10.4	9.9	-177.29	-24.0	296.2	580.8	562.9	17.90	32.446		
4,200.0	4,185.0	4,194.2	4,185.0	10.7	10.0	-177.34	-24.0	296.2	591.1	572.7	18.33	32.241		
4,300.0	4,284.5	4,293.7	4,284.5	11.0	10.2	-177.39	-24.0	296.2	601.4	582.6	18.77	32.044		
4,400.0	4,383.9	4,393.2	4,383.9	11.3	10.4	-177.43	-24.0	296.2	611.7	592.5	19.20	31.854		
4,500.0	4,483.4	4,492.6	4,483.4	11.6	10.6	-177.47	-24.0	296.2	622.0	602.4	19.64	31.670		
4,600.0	4,582.9	4,592.1	4,582.9	11.9	10.8	-177.51	-24.0	296.2	632.3	612.3	20.08	31.493		
4,700.0	4,682.3	4,691.6	4,682.3	12.2	11.0	-177.55	-24.0	296.2	642.6	622.1	20.52	31.323		
4,800.0	4,781.9	4,791.1	4,781.9	12.5	11.2	-177.59	-24.0	296.2	651.9	630.9	20.97	31.081		
4,900.0	4,881.7	4,890.9	4,881.7	12.6	11.4	-177.62	-24.0	296.2	657.8	636.4	21.39	30.746		
5,000.0	4,981.7	4,990.9	4,981.7	12.8	11.6	-177.63	-24.0	296.2	660.2	638.4	21.79	30.298		
5,100.0	5,081.7	5,090.9	5,081.7	13.0	11.8	91.74	-24.0	296.2	660.2	638.0	22.19	29.752		

CC - Min centre to center distance or convergent point, SF - min separation factor, ES - min ellipse separation

Company:	Synergy Resources	Local Co-ordinate Reference:	Well SRC Gies T-15-22NHZ
Project:	SEC.15-T7N-R65W	TVD Reference:	WELL @ 4851.0ft (Original Well Elev)
Reference Site:	SRC Gies Pad Sec.15-T7N-R65W	MD Reference:	WELL @ 4851.0ft (Original Well Elev)
Site Error:	0.0ft	North Reference:	True
Reference Well:	SRC Gies T-15-22NHZ	Survey Calculation Method:	Minimum Curvature
Well Error:	0.0ft	Output errors are at	2.00 sigma
Reference Wellbore	Wellbore #1	Database:	landmark
Reference Design:	Plan #1 (5-7-14)	Offset TVD Reference:	Offset Datum

Offset Design												Offset Site Error:	0.0 ft
Survey Program: 0-MWD												Offset Well Error:	0.0 ft
Reference		Offset		Semi Major Axis			Distance						Warning
Measured Depth (ft)	Vertical Depth (ft)	Measured Depth (ft)	Vertical Depth (ft)	Reference (ft)	Offset (ft)	Highside Toolface (°)	Offset Wellbore Centre +N/-S (ft)	+E/-W (ft)	Between Centres (ft)	Between Ellipses (ft)	Minimum Separation (ft)	Separation Factor	
5,200.0	5,181.7	5,190.9	5,181.7	13.2	12.0	91.74	-24.0	296.2	660.2	637.6	22.60	29.208	
5,300.0	5,281.7	5,290.9	5,281.7	13.3	12.2	91.74	-24.0	296.2	660.2	637.2	23.02	28.682	
5,400.0	5,381.7	5,390.9	5,381.7	13.5	12.4	91.74	-24.0	296.2	660.2	636.8	23.43	28.173	
5,500.0	5,481.7	5,490.9	5,481.7	13.7	12.6	91.74	-24.0	296.2	660.2	636.4	23.85	27.680	
5,600.0	5,581.7	5,590.9	5,581.7	13.9	12.8	91.74	-24.0	296.2	660.2	635.9	24.27	27.203	
5,700.0	5,681.7	5,690.9	5,681.7	14.1	13.0	91.74	-24.0	296.2	660.2	635.5	24.69	26.741	
5,800.0	5,781.7	5,790.9	5,781.7	14.3	13.2	91.74	-24.0	296.2	660.2	635.1	25.11	26.293	
5,900.0	5,881.7	5,890.9	5,881.7	14.5	13.4	91.74	-24.0	296.2	660.2	634.7	25.53	25.859	
6,000.0	5,981.7	5,990.9	5,981.7	14.7	13.6	91.74	-24.0	296.2	660.2	634.3	25.95	25.438	
6,100.0	6,081.7	6,090.9	6,081.7	14.8	13.8	91.74	-24.0	296.2	660.2	633.8	26.38	25.030	
6,200.0	6,181.7	6,190.9	6,181.7	15.0	14.0	91.74	-24.0	296.2	660.2	633.4	26.80	24.634	
6,300.0	6,281.7	6,290.9	6,281.7	15.2	14.2	91.74	-24.0	296.2	660.2	633.0	27.23	24.249	
6,400.0	6,381.7	6,390.9	6,381.7	15.4	14.4	91.74	-24.0	296.2	660.2	632.6	27.65	23.876	
6,500.0	6,481.7	6,490.9	6,481.7	15.6	14.6	91.74	-24.0	296.2	660.2	632.1	28.08	23.513	
6,600.0	6,581.6	6,590.8	6,581.6	15.8	14.8	-88.25	-24.0	296.2	660.1	631.6	28.49	23.170	
6,700.0	6,680.4	6,689.6	6,680.4	16.0	15.1	-89.55	-24.0	296.2	659.8	631.0	28.89	22.840	
6,722.5	6,702.3	6,711.5	6,702.3	16.0	15.1	-90.00	-24.0	296.2	659.8	630.8	28.98	22.768	
6,800.0	6,776.2	6,785.4	6,776.2	16.2	15.3	-91.90	-24.0	296.2	660.2	631.0	29.29	22.542	
6,900.0	6,867.0	6,883.2	6,873.8	16.4	15.4	-94.88	-28.5	296.2	662.6	632.9	29.69	22.320	
7,000.0	6,951.1	6,987.5	6,976.2	16.6	15.6	-97.89	-47.7	296.3	667.1	637.0	30.11	22.156	
7,100.0	7,027.0	7,098.7	7,081.2	17.0	15.9	-100.82	-84.2	296.4	673.5	642.9	30.60	22.009	
7,200.0	7,093.0	7,218.0	7,186.0	17.4	16.2	-103.64	-140.9	296.7	681.3	650.1	31.23	21.817	
7,300.0	7,148.0	7,346.2	7,286.4	18.0	16.7	-106.25	-220.3	297.0	689.8	657.7	32.08	21.505	
7,400.0	7,190.8	7,483.8	7,376.6	18.7	17.4	-108.55	-324.0	297.4	698.2	664.9	33.29	20.976	
7,500.0	7,220.6	7,630.7	7,449.1	19.6	18.4	-110.42	-451.3	297.8	705.5	670.5	34.98	20.171	
7,600.0	7,236.9	7,785.2	7,495.8	20.7	19.9	-111.71	-598.3	298.4	710.7	673.5	37.24	19.084	
7,700.0	7,240.0	7,938.4	7,510.0	21.9	21.7	-112.26	-750.6	299.0	712.9	672.9	40.00	17.820	
7,800.0	7,240.0	8,038.4	7,510.0	23.2	23.0	-112.26	-850.6	299.4	712.9	670.4	42.49	16.780	
7,900.0	7,240.0	8,138.4	7,510.0	24.6	24.4	-112.26	-950.6	299.8	712.9	667.8	45.11	15.803	
8,000.0	7,240.0	8,238.4	7,510.0	26.0	25.8	-112.26	-1,050.6	300.1	712.9	665.0	47.86	14.894	
8,100.0	7,240.0	8,338.4	7,510.0	27.5	27.3	-112.26	-1,150.6	300.5	712.9	662.1	50.72	14.054	
8,200.0	7,240.0	8,438.4	7,510.0	29.1	28.9	-112.26	-1,250.6	300.9	712.9	659.2	53.67	13.282	
8,300.0	7,240.0	8,538.4	7,510.0	30.7	30.5	-112.26	-1,350.6	301.3	712.9	656.2	56.70	12.573	
8,400.0	7,240.0	8,638.4	7,510.0	32.3	32.1	-112.26	-1,450.6	301.7	712.9	653.1	59.79	11.923	
8,500.0	7,240.0	8,738.4	7,510.0	34.0	33.8	-112.26	-1,550.6	302.0	712.8	649.9	62.93	11.327	
8,600.0	7,240.0	8,838.4	7,510.0	35.7	35.5	-112.26	-1,650.6	302.4	712.8	646.7	66.13	10.780	
8,700.0	7,240.0	8,938.4	7,510.0	37.4	37.2	-112.26	-1,750.6	302.8	712.8	643.5	69.36	10.277	
8,800.0	7,240.0	9,038.4	7,510.0	39.1	38.9	-112.26	-1,850.6	303.2	712.8	640.2	72.63	9.815	
8,900.0	7,240.0	9,138.4	7,510.0	40.9	40.7	-112.26	-1,950.6	303.6	712.8	636.9	75.93	9.388	
9,000.0	7,240.0	9,238.4	7,510.0	42.6	42.4	-112.26	-2,050.6	304.0	712.8	633.6	79.25	8.994	
9,100.0	7,240.0	9,338.4	7,510.0	44.4	44.2	-112.26	-2,150.6	304.3	712.8	630.2	82.60	8.630	
9,200.0	7,240.0	9,438.4	7,510.0	46.2	46.0	-112.26	-2,250.6	304.7	712.8	626.8	85.97	8.291	
9,300.0	7,240.0	9,538.4	7,510.0	48.0	47.8	-112.26	-2,350.6	305.1	712.8	623.4	89.36	7.977	
9,400.0	7,240.0	9,638.4	7,510.0	49.8	49.6	-112.26	-2,450.6	305.5	712.8	620.0	92.76	7.684	
9,500.0	7,240.0	9,738.4	7,510.0	51.6	51.4	-112.26	-2,550.6	305.9	712.8	616.6	96.18	7.411	
9,600.0	7,240.0	9,838.4	7,510.0	53.5	53.3	-112.26	-2,650.6	306.3	712.8	613.2	99.61	7.155	
9,700.0	7,240.0	9,938.4	7,510.0	55.3	55.1	-112.26	-2,750.6	306.6	712.8	609.7	103.06	6.916	
9,800.0	7,240.0	10,038.4	7,510.0	57.1	56.9	-112.26	-2,850.5	307.0	712.8	606.3	106.51	6.692	
9,900.0	7,240.0	10,138.4	7,510.0	59.0	58.8	-112.26	-2,950.5	307.4	712.8	602.8	109.98	6.481	
10,000.0	7,240.0	10,238.4	7,510.0	60.8	60.6	-112.26	-3,050.5	307.8	712.8	599.3	113.45	6.283	
10,100.0	7,240.0	10,338.4	7,510.0	62.7	62.5	-112.26	-3,150.5	308.2	712.8	595.8	116.93	6.096	
10,200.0	7,240.0	10,438.4	7,510.0	64.5	64.4	-112.26	-3,250.5	308.6	712.7	592.3	120.42	5.919	

CC - Min centre to center distance or convergent point, SF - min separation factor, ES - min ellipse separation

Company:	Synergy Resources	Local Co-ordinate Reference:	Well SRC Gies T-15-22NHZ
Project:	SEC.15-T7N-R65W	TVD Reference:	WELL @ 4851.0ft (Original Well Elev)
Reference Site:	SRC Gies Pad Sec.15-T7N-R65W	MD Reference:	WELL @ 4851.0ft (Original Well Elev)
Site Error:	0.0ft	North Reference:	True
Reference Well:	SRC Gies T-15-22NHZ	Survey Calculation Method:	Minimum Curvature
Well Error:	0.0ft	Output errors are at	2.00 sigma
Reference Wellbore	Wellbore #1	Database:	landmark
Reference Design:	Plan #1 (5-7-14)	Offset TVD Reference:	Offset Datum

Offset Design SRC Gies Pad Sec.15-T7N-R65W - SRC Gies 44-15-22CHZ - Wellbore #1 - Plan #1 (5-7-14)												Offset Site Error:	0.0 ft
Survey Program: 0-MWD												Offset Well Error:	0.0 ft
Reference		Offset		Semi Major Axis			Distance						
Measured Depth (ft)	Vertical Depth (ft)	Measured Depth (ft)	Vertical Depth (ft)	Reference (ft)	Offset (ft)	Highside Toolface (°)	Offset Wellbore Centre +N/-S (ft)	+E/-W (ft)	Between Centres (ft)	Between Ellipses (ft)	Minimum Separation (ft)	Separation Factor	Warning
10,300.0	7,240.0	10,538.4	7,510.0	66.4	66.2	-112.26	-3,350.5	308.9	712.7	588.8	123.91	5.752	
10,400.0	7,240.0	10,638.4	7,510.0	68.3	68.1	-112.26	-3,450.5	309.3	712.7	585.3	127.42	5.594	
10,500.0	7,240.0	10,738.4	7,510.0	70.1	70.0	-112.26	-3,550.5	309.7	712.7	581.8	130.92	5.444	
10,600.0	7,240.0	10,838.4	7,510.0	72.0	71.8	-112.26	-3,650.5	310.1	712.7	578.3	134.43	5.302	
10,700.0	7,240.0	10,938.4	7,510.0	73.9	73.7	-112.26	-3,750.5	310.5	712.7	574.8	137.95	5.166	
10,800.0	7,240.0	11,038.4	7,510.0	75.7	75.6	-112.26	-3,850.5	310.8	712.7	571.2	141.47	5.038	
10,900.0	7,240.0	11,138.4	7,510.0	77.6	77.5	-112.26	-3,950.5	311.2	712.7	567.7	145.00	4.915	
11,000.0	7,240.0	11,238.4	7,510.0	79.5	79.3	-112.26	-4,050.5	311.6	712.7	564.2	148.53	4.798	
11,100.0	7,240.0	11,338.4	7,510.0	81.4	81.2	-112.26	-4,150.5	312.0	712.7	560.6	152.06	4.687	
11,200.0	7,240.0	11,438.4	7,510.0	83.3	83.1	-112.26	-4,250.5	312.4	712.7	557.1	155.60	4.580	
11,300.0	7,240.0	11,538.4	7,510.0	85.2	85.0	-112.26	-4,350.5	312.8	712.7	553.5	159.14	4.478	
11,400.0	7,240.0	11,638.4	7,510.0	87.1	86.9	-112.26	-4,450.5	313.1	712.7	550.0	162.68	4.381	
11,463.8	7,240.0	11,702.2	7,510.0	88.3	88.1	-112.26	-4,514.4	313.4	712.7	547.7	164.94	4.321 SF	

Company:	Synergy Resources	Local Co-ordinate Reference:	Well SRC Gies T-15-22NHZ
Project:	SEC.15-T7N-R65W	TVD Reference:	WELL @ 4851.0ft (Original Well Elev)
Reference Site:	SRC Gies Pad Sec.15-T7N-R65W	MD Reference:	WELL @ 4851.0ft (Original Well Elev)
Site Error:	0.0ft	North Reference:	True
Reference Well:	SRC Gies T-15-22NHZ	Survey Calculation Method:	Minimum Curvature
Well Error:	0.0ft	Output errors are at	2.00 sigma
Reference Wellbore	Wellbore #1	Database:	landmark
Reference Design:	Plan #1 (5-7-14)	Offset TVD Reference:	Offset Datum

Offset Design													Offset Site Error:	0.0 ft
Survey Program: 0-MWD													Offset Well Error:	0.0 ft
Reference		Offset		Semi Major Axis			Distance							Warning
Measured Depth (ft)	Vertical Depth (ft)	Measured Depth (ft)	Vertical Depth (ft)	Reference (ft)	Offset (ft)	Highside Toolface (°)	Offset Wellbore Centre +N/-S (ft)	+E/-W (ft)	Between Centres (ft)	Between Ellipses (ft)	Minimum Separation (ft)	Separation Factor		
0.0	0.0	0.0	0.0	0.0	0.0	91.58	-2.2	79.7	79.8					
100.0	100.0	100.0	100.0	0.1	0.1	91.58	-2.2	79.7	79.8	79.5	0.22	354.892		
200.0	200.0	200.0	200.0	0.3	0.3	91.58	-2.2	79.7	79.8	79.1	0.67	118.297		
300.0	300.0	300.0	300.0	0.6	0.6	91.58	-2.2	79.7	79.8	78.6	1.12	70.978		
400.0	400.0	400.0	400.0	0.8	0.8	91.58	-2.2	79.7	79.8	78.2	1.57	50.699		
500.0	500.0	500.0	500.0	1.0	1.0	91.58	-2.2	79.7	79.8	77.7	2.02	39.432		
600.0	600.0	600.0	600.0	1.2	1.2	91.58	-2.2	79.7	79.8	77.3	2.47	32.263 CC, ES		
700.0	700.0	697.3	697.2	1.5	1.4	91.62	-2.3	81.4	81.5	78.6	2.90	28.062		
800.0	800.0	794.3	794.1	1.7	1.6	91.74	-2.6	86.3	86.5	83.2	3.33	25.989		
900.0	900.0	890.9	890.4	1.9	1.9	91.92	-3.2	94.5	95.0	91.2	3.77	25.169		
1,000.0	1,000.0	989.8	988.8	2.1	2.1	92.10	-3.9	104.9	105.6	101.3	4.24	24.884		
1,100.0	1,100.0	1,089.3	1,087.7	2.4	2.4	92.26	-4.6	115.5	116.2	111.5	4.73	24.587		
1,200.0	1,200.0	1,188.7	1,186.5	2.6	2.6	92.38	-5.2	126.0	126.8	121.6	5.22	24.304		
1,300.0	1,300.0	1,287.9	1,285.2	2.8	2.9	-176.90	-5.9	136.5	139.2	133.7	5.52	25.231		
1,400.0	1,399.8	1,386.7	1,383.4	3.0	3.2	-176.90	-6.6	147.0	155.0	149.0	5.93	26.129		
1,500.0	1,499.5	1,484.8	1,481.0	3.2	3.5	-176.96	-7.3	157.4	174.2	167.9	6.34	27.466		
1,600.0	1,598.9	1,582.6	1,578.2	3.5	3.7	-177.04	-8.0	167.7	195.0	188.3	6.77	28.814		
1,700.0	1,698.4	1,680.4	1,675.5	3.7	4.0	-177.11	-8.7	178.1	215.8	208.6	7.20	29.988		
1,800.0	1,797.8	1,778.2	1,772.7	3.9	4.3	-177.17	-9.4	188.5	236.7	229.0	7.63	31.012		
1,900.0	1,897.3	1,876.0	1,870.0	4.2	4.6	-177.21	-10.1	198.8	257.5	249.4	8.07	31.911		
2,000.0	1,996.8	1,973.9	1,967.2	4.5	4.9	-177.25	-10.7	209.2	278.3	269.8	8.51	32.707		
2,100.0	2,096.2	2,071.7	2,064.5	4.7	5.2	-177.29	-11.4	219.6	299.1	290.2	8.95	33.415		
2,200.0	2,195.7	2,169.5	2,161.7	5.0	5.5	-177.32	-12.1	230.0	319.9	310.5	9.40	34.049		
2,300.0	2,295.2	2,267.3	2,259.0	5.3	5.7	-177.35	-12.8	240.3	340.7	330.9	9.84	34.619		
2,400.0	2,394.6	2,365.1	2,356.3	5.5	6.0	-177.37	-13.5	250.7	361.6	351.3	10.29	35.134		
2,500.0	2,494.1	2,462.9	2,453.5	5.8	6.3	-177.39	-14.2	261.1	382.4	371.6	10.74	35.601		
2,600.0	2,593.6	2,560.7	2,550.8	6.1	6.6	-177.41	-14.8	271.4	403.2	392.0	11.19	36.027		
2,700.0	2,693.0	2,658.5	2,648.0	6.4	6.9	-177.43	-15.5	281.8	424.0	412.4	11.64	36.416		
2,800.0	2,792.5	2,756.3	2,745.3	6.7	7.2	-177.44	-16.2	292.2	444.8	432.7	12.10	36.773		
2,900.0	2,892.0	2,854.1	2,842.5	7.0	7.5	-177.46	-16.9	302.5	465.7	453.1	12.55	37.102		
3,000.0	2,991.4	2,951.9	2,939.8	7.2	7.8	-177.47	-17.6	312.9	486.5	473.5	13.01	37.406		
3,100.0	3,090.9	3,049.8	3,037.0	7.5	8.1	-177.48	-18.3	323.3	507.3	493.8	13.46	37.687		
3,200.0	3,190.4	3,147.6	3,134.3	7.8	8.4	-177.49	-18.9	333.6	528.1	514.2	13.92	37.947		
3,300.0	3,289.8	3,245.4	3,231.6	8.1	8.7	-177.50	-19.6	344.0	548.9	534.6	14.37	38.190		
3,400.0	3,389.3	3,343.2	3,328.8	8.4	9.0	-177.51	-20.3	354.4	569.7	554.9	14.83	38.416		
3,500.0	3,488.8	3,441.0	3,426.1	8.7	9.2	-177.52	-21.0	364.7	590.6	575.3	15.29	38.628		
3,600.0	3,588.2	3,538.8	3,523.3	9.0	9.5	-177.53	-21.7	375.1	611.4	595.6	15.75	38.826		
3,700.0	3,687.7	3,636.6	3,620.6	9.3	9.8	-177.53	-22.4	385.5	632.2	616.0	16.21	39.012		
3,800.0	3,787.2	3,734.4	3,717.8	9.6	10.1	-177.54	-23.0	395.8	653.0	636.4	16.66	39.187		
3,900.0	3,886.6	3,832.2	3,815.1	9.8	10.4	-177.55	-23.7	406.2	673.8	656.7	17.12	39.351		
4,000.0	3,986.1	3,930.0	3,912.3	10.1	10.7	-177.55	-24.4	416.6	694.7	677.1	17.58	39.507		
4,100.0	4,085.6	4,027.8	4,009.6	10.4	11.0	-177.56	-25.1	426.9	715.5	697.4	18.04	39.653		
4,200.0	4,185.0	4,125.7	4,106.9	10.7	11.3	-177.57	-25.8	437.3	736.3	717.8	18.50	39.792		
4,300.0	4,284.5	4,223.5	4,204.1	11.0	11.6	-177.57	-26.5	447.7	757.1	738.1	18.96	39.923		
4,400.0	4,383.9	4,321.3	4,301.4	11.3	11.9	-177.58	-27.2	458.0	777.9	758.5	19.43	40.048		
4,500.0	4,483.4	4,419.1	4,398.6	11.6	12.2	-177.58	-27.8	468.4	798.7	778.9	19.89	40.166		
4,600.0	4,582.9	4,516.9	4,495.9	11.9	12.5	-177.58	-28.5	478.8	819.6	799.2	20.35	40.279		
4,700.0	4,682.3	4,614.7	4,593.1	12.2	12.8	-177.59	-29.2	489.1	840.4	819.6	20.81	40.386		
4,800.0	4,781.9	4,712.7	4,690.6	12.5	13.1	-177.60	-29.9	499.5	860.2	838.9	21.30	40.384		
4,900.0	4,881.7	4,852.4	4,829.8	12.6	13.4	-177.61	-30.7	511.2	874.4	852.6	21.80	40.112		
5,000.0	4,981.7	4,996.3	4,973.6	12.8	13.6	-177.61	-31.0	516.1	880.2	858.0	22.25	39.561		
5,100.0	5,081.7	5,104.4	5,081.7	13.0	13.8	91.76	-31.0	516.2	880.4	857.7	22.65	38.871		

CC - Min centre to center distance or convergent point, SF - min separation factor, ES - min ellipse separation

Company:	Synergy Resources	Local Co-ordinate Reference:	Well SRC Gies T-15-22NHZ
Project:	SEC.15-T7N-R65W	TVD Reference:	WELL @ 4851.0ft (Original Well Elev)
Reference Site:	SRC Gies Pad Sec.15-T7N-R65W	MD Reference:	WELL @ 4851.0ft (Original Well Elev)
Site Error:	0.0ft	North Reference:	True
Reference Well:	SRC Gies T-15-22NHZ	Survey Calculation Method:	Minimum Curvature
Well Error:	0.0ft	Output errors are at	2.00 sigma
Reference Wellbore	Wellbore #1	Database:	landmark
Reference Design:	Plan #1 (5-7-14)	Offset TVD Reference:	Offset Datum

Offset Design												Offset Site Error:	0.0 ft
Survey Program: 0-MWD												Offset Well Error:	0.0 ft
Reference		Offset		Semi Major Axis			Distance						
Measured Depth (ft)	Vertical Depth (ft)	Measured Depth (ft)	Vertical Depth (ft)	Reference (ft)	Offset (ft)	Highside Toolface (°)	Offset Wellbore Centre +N/-S (ft)	+E/-W (ft)	Between Centres (ft)	Between Ellipses (ft)	Minimum Separation (ft)	Separation Factor	Warning
5,200.0	5,181.7	5,204.4	5,181.7	13.2	14.0	91.76	-31.0	516.2	880.4	857.3	23.05	38.200	
5,300.0	5,281.7	5,304.4	5,281.7	13.3	14.1	91.76	-31.0	516.2	880.4	856.9	23.45	37.548	
5,400.0	5,381.7	5,404.4	5,381.7	13.5	14.3	91.76	-31.0	516.2	880.4	856.5	23.85	36.916	
5,500.0	5,481.7	5,504.4	5,481.7	13.7	14.5	91.76	-31.0	516.2	880.4	856.1	24.25	36.302	
5,600.0	5,581.7	5,604.4	5,581.7	13.9	14.6	91.76	-31.0	516.2	880.4	855.7	24.66	35.705	
5,700.0	5,681.7	5,704.4	5,681.7	14.1	14.8	91.76	-31.0	516.2	880.4	855.3	25.06	35.126	
5,800.0	5,781.7	5,804.4	5,781.7	14.3	15.0	91.76	-31.0	516.2	880.4	854.9	25.47	34.564	
5,900.0	5,881.7	5,904.4	5,881.7	14.5	15.2	91.76	-31.0	516.2	880.4	854.5	25.88	34.017	
6,000.0	5,981.7	6,004.4	5,981.7	14.7	15.4	91.76	-31.0	516.2	880.4	854.1	26.29	33.486	
6,100.0	6,081.7	6,104.4	6,081.7	14.8	15.5	91.76	-31.0	516.2	880.4	853.6	26.70	32.970	
6,200.0	6,181.7	6,204.4	6,181.7	15.0	15.7	91.76	-31.0	516.2	880.4	853.2	27.12	32.467	
6,300.0	6,281.7	6,304.4	6,281.7	15.2	15.9	91.76	-31.0	516.2	880.4	852.8	27.53	31.979	
6,400.0	6,381.7	6,404.4	6,381.7	15.4	16.1	91.76	-31.0	516.2	880.4	852.4	27.94	31.504	
6,500.0	6,481.7	6,504.4	6,481.7	15.6	16.3	91.76	-31.0	516.2	880.4	852.0	28.36	31.041	
6,600.0	6,581.6	6,602.1	6,579.3	15.8	16.4	-88.03	-33.1	516.2	880.3	851.6	28.75	30.618	
6,700.0	6,680.4	6,698.0	6,674.2	16.0	16.6	-88.07	-47.0	516.3	880.3	851.2	29.13	30.222	
6,800.0	6,776.2	6,794.1	6,766.5	16.2	16.8	-88.14	-73.4	516.4	880.3	850.8	29.53	29.805	
6,900.0	6,867.0	6,890.4	6,854.6	16.4	17.0	-88.25	-112.0	516.5	880.2	850.2	30.01	29.328	
7,000.0	6,951.1	6,986.9	6,936.9	16.6	17.3	-88.40	-162.2	516.7	880.2	849.5	30.62	28.743	
7,100.0	7,027.0	7,083.7	7,012.0	17.0	17.6	-88.57	-223.2	517.0	880.1	848.7	31.43	28.006	
7,200.0	7,093.0	7,180.9	7,078.4	17.4	18.1	-88.77	-294.0	517.3	880.0	847.5	32.48	27.091	
7,300.0	7,148.0	7,278.5	7,134.8	18.0	18.6	-89.00	-373.6	517.6	880.0	846.1	33.84	26.002	
7,400.0	7,190.8	7,376.6	7,180.1	18.7	19.4	-89.24	-460.5	517.9	879.9	844.4	35.52	24.772	
7,500.0	7,220.6	7,475.2	7,213.2	19.6	20.2	-89.50	-553.3	518.3	879.8	842.3	37.51	23.457	
7,600.0	7,236.9	7,574.3	7,233.4	20.7	21.3	-89.77	-650.3	518.6	879.8	840.0	39.77	22.120	
7,700.0	7,240.0	7,674.0	7,240.0	21.9	22.4	-90.00	-749.7	519.0	879.8	837.5	42.26	20.819	
7,800.0	7,240.0	7,774.0	7,240.0	23.2	23.7	-90.00	-849.7	519.4	879.8	834.9	44.94	19.577	
7,900.0	7,240.0	7,874.0	7,240.0	24.6	25.0	-90.00	-949.7	519.8	879.8	832.0	47.77	18.416	
8,000.0	7,240.0	7,974.0	7,240.0	26.0	26.5	-90.00	-1,049.7	520.2	879.8	829.1	50.74	17.339	
8,100.0	7,240.0	8,074.0	7,240.0	27.5	27.9	-90.00	-1,149.7	520.6	879.8	826.0	53.82	16.346	
8,200.0	7,240.0	8,174.0	7,240.0	29.1	29.5	-90.00	-1,249.7	520.9	879.8	822.8	57.00	15.436	
8,300.0	7,240.0	8,274.0	7,240.0	30.7	31.0	-90.00	-1,349.7	521.3	879.8	819.5	60.25	14.603	
8,400.0	7,240.0	8,374.0	7,240.0	32.3	32.6	-90.00	-1,449.7	521.7	879.8	816.2	63.57	13.840	
8,500.0	7,240.0	8,474.0	7,240.0	34.0	34.3	-90.00	-1,549.7	522.1	879.8	812.8	66.94	13.142	
8,600.0	7,240.0	8,574.0	7,240.0	35.7	36.0	-90.00	-1,649.7	522.5	879.8	809.4	70.37	12.502	
8,700.0	7,240.0	8,674.0	7,240.0	37.4	37.7	-90.00	-1,749.7	522.9	879.8	805.9	73.84	11.915	
8,800.0	7,240.0	8,774.0	7,240.0	39.1	39.4	-90.00	-1,849.7	523.3	879.8	802.4	77.34	11.375	
8,900.0	7,240.0	8,874.0	7,240.0	40.9	41.1	-90.00	-1,949.7	523.6	879.8	798.9	80.87	10.878	
9,000.0	7,240.0	8,974.0	7,240.0	42.6	42.9	-90.00	-2,049.7	524.0	879.8	795.3	84.44	10.419	
9,100.0	7,240.0	9,074.0	7,240.0	44.4	44.6	-90.00	-2,149.7	524.4	879.8	791.7	88.02	9.995	
9,200.0	7,240.0	9,174.0	7,240.0	46.2	46.4	-90.00	-2,249.7	524.8	879.8	788.1	91.63	9.601	
9,300.0	7,240.0	9,274.0	7,240.0	48.0	48.2	-90.00	-2,349.7	525.2	879.8	784.5	95.26	9.235	
9,400.0	7,240.0	9,374.0	7,240.0	49.8	50.0	-90.00	-2,449.7	525.6	879.8	780.8	98.90	8.895	
9,500.0	7,240.0	9,474.0	7,240.0	51.6	51.8	-90.00	-2,549.7	525.9	879.7	777.2	102.56	8.578	
9,600.0	7,240.0	9,574.0	7,240.0	53.5	53.6	-90.00	-2,649.7	526.3	879.7	773.5	106.23	8.281	
9,700.0	7,240.0	9,674.0	7,240.0	55.3	55.5	-90.00	-2,749.7	526.7	879.7	769.8	109.92	8.004	
9,800.0	7,240.0	9,774.0	7,240.0	57.1	57.3	-90.00	-2,849.7	527.1	879.7	766.1	113.62	7.743	
9,900.0	7,240.0	9,874.0	7,240.0	59.0	59.1	-90.00	-2,949.7	527.5	879.7	762.4	117.32	7.499	
10,000.0	7,240.0	9,974.0	7,240.0	60.8	61.0	-90.00	-3,049.7	527.9	879.7	758.7	121.04	7.268	
10,100.0	7,240.0	10,074.0	7,240.0	62.7	62.8	-90.00	-3,149.7	528.3	879.7	755.0	124.76	7.051	
10,200.0	7,240.0	10,174.0	7,240.0	64.5	64.7	-90.00	-3,249.7	528.6	879.7	751.2	128.49	6.847	
10,300.0	7,240.0	10,274.0	7,240.0	66.4	66.5	-90.00	-3,349.7	529.0	879.7	747.5	132.23	6.653	

CC - Min centre to center distance or convergent point, SF - min separation factor, ES - min ellipse separation

Company:	Synergy Resources	Local Co-ordinate Reference:	Well SRC Gies T-15-22NHZ
Project:	SEC.15-T7N-R65W	TVD Reference:	WELL @ 4851.0ft (Original Well Elev)
Reference Site:	SRC Gies Pad Sec.15-T7N-R65W	MD Reference:	WELL @ 4851.0ft (Original Well Elev)
Site Error:	0.0ft	North Reference:	True
Reference Well:	SRC Gies T-15-22NHZ	Survey Calculation Method:	Minimum Curvature
Well Error:	0.0ft	Output errors are at	2.00 sigma
Reference Wellbore	Wellbore #1	Database:	landmark
Reference Design:	Plan #1 (5-7-14)	Offset TVD Reference:	Offset Datum

Offset Design												Offset Site Error:	0.0 ft
SRC Gies Pad Sec.15-T7N-R65W - SRC Gies 44-15-22NHZ - Wellbore #1 - Plan #1 (5-7-14)												Offset Well Error:	0.0 ft
Survey Program: 0-MWD													
Reference		Offset		Semi Major Axis			Distance						
Measured Depth (ft)	Vertical Depth (ft)	Measured Depth (ft)	Vertical Depth (ft)	Reference (ft)	Offset (ft)	Highside Toolface (°)	Offset Wellbore Centre +N/-S (ft)	+E/-W (ft)	Between Centres (ft)	Between Ellipses (ft)	Minimum Separation (ft)	Separation Factor	Warning
10,400.0	7,240.0	10,374.0	7,240.0	68.3	68.4	-90.00	-3,449.7	529.4	879.7	743.8	135.97	6.470	
10,500.0	7,240.0	10,474.0	7,240.0	70.1	70.2	-90.00	-3,549.7	529.8	879.7	740.0	139.72	6.296	
10,600.0	7,240.0	10,574.0	7,240.0	72.0	72.1	-90.00	-3,649.7	530.2	879.7	736.2	143.47	6.132	
10,700.0	7,240.0	10,674.0	7,240.0	73.9	74.0	-90.00	-3,749.7	530.6	879.7	732.5	147.23	5.975	
10,800.0	7,240.0	10,774.0	7,240.0	75.7	75.9	-90.00	-3,849.7	531.0	879.7	728.7	151.00	5.826	
10,900.0	7,240.0	10,874.0	7,240.0	77.6	77.7	-90.00	-3,949.7	531.3	879.7	724.9	154.77	5.684	
11,000.0	7,240.0	10,974.0	7,240.0	79.5	79.6	-90.00	-4,049.7	531.7	879.7	721.2	158.54	5.549	
11,100.0	7,240.0	11,074.0	7,240.0	81.4	81.5	-90.00	-4,149.7	532.1	879.7	717.4	162.32	5.420	
11,200.0	7,240.0	11,174.0	7,240.0	83.3	83.4	-90.00	-4,249.7	532.5	879.7	713.6	166.09	5.296	
11,300.0	7,240.0	11,274.0	7,240.0	85.2	85.3	-90.00	-4,349.7	532.9	879.7	709.8	169.88	5.178	
11,400.0	7,240.0	11,374.0	7,240.0	87.1	87.1	-90.00	-4,449.7	533.3	879.7	706.0	173.66	5.065	
11,463.8	7,240.0	11,437.9	7,240.0	88.3	88.3	-90.00	-4,513.5	533.5	879.7	703.6	176.08	4.996 SF	

Company:	Synergy Resources	Local Co-ordinate Reference:	Well SRC Gies T-15-22NHZ
Project:	SEC.15-T7N-R65W	TVD Reference:	WELL @ 4851.0ft (Original Well Elev)
Reference Site:	SRC Gies Pad Sec.15-T7N-R65W	MD Reference:	WELL @ 4851.0ft (Original Well Elev)
Site Error:	0.0ft	North Reference:	True
Reference Well:	SRC Gies T-15-22NHZ	Survey Calculation Method:	Minimum Curvature
Well Error:	0.0ft	Output errors are at	2.00 sigma
Reference Wellbore	Wellbore #1	Database:	landmark
Reference Design:	Plan #1 (5-7-14)	Offset TVD Reference:	Offset Datum

Offset Design													Offset Site Error:	0.0 ft
Survey Program: 0-MWD													Offset Well Error:	0.0 ft
Reference		Offset		Semi Major Axis			Distance							Warning
Measured Depth (ft)	Vertical Depth (ft)	Measured Depth (ft)	Vertical Depth (ft)	Reference (ft)	Offset (ft)	Highside Toolface (°)	Offset Wellbore Centre +N/-S (ft)	+E/-W (ft)	Between Centres (ft)	Between Ellipses (ft)	Minimum Separation (ft)	Separation Factor		
0.0	0.0	0.0	0.0	0.0	0.0	92.10	-0.7	20.0	20.0					
100.0	100.0	100.0	100.0	0.1	0.1	92.10	-0.7	20.0	20.0	19.8	0.22	89.058		
200.0	200.0	200.0	200.0	0.3	0.3	92.10	-0.7	20.0	20.0	19.3	0.67	29.686		
300.0	300.0	300.0	300.0	0.6	0.6	92.10	-0.7	20.0	20.0	18.9	1.12	17.812		
400.0	400.0	400.0	400.0	0.8	0.8	92.10	-0.7	20.0	20.0	18.4	1.57	12.723		
500.0	500.0	500.0	500.0	1.0	1.0	92.10	-0.7	20.0	20.0	18.0	2.02	9.895		
600.0	600.0	600.0	600.0	1.2	1.2	92.10	-0.7	20.0	20.0	17.5	2.47	8.096		
700.0	700.0	700.0	700.0	1.5	1.5	92.10	-0.7	20.0	20.0	17.1	2.92	6.851		
800.0	800.0	800.0	800.0	1.7	1.7	92.10	-0.7	20.0	20.0	16.6	3.37	5.937		
900.0	900.0	900.0	900.0	1.9	1.9	92.10	-0.7	20.0	20.0	16.2	3.82	5.239		
1,000.0	1,000.0	1,000.0	1,000.0	2.1	2.1	92.10	-0.7	20.0	20.0	15.7	4.27	4.687		
1,100.0	1,100.0	1,100.0	1,100.0	2.4	2.4	92.10	-0.7	20.0	20.0	15.3	4.72	4.241		
1,200.0	1,200.0	1,200.0	1,200.0	2.6	2.6	92.10	-0.7	20.0	20.0	14.8	5.17	3.872 CC, ES		
1,300.0	1,300.0	1,300.0	1,300.0	2.8	2.8	-177.49	-0.7	20.0	21.8	16.2	5.60	3.884		
1,400.0	1,399.8	1,399.8	1,399.8	3.0	3.0	-177.97	-0.7	20.0	27.0	21.0	6.02	4.483		
1,500.0	1,499.5	1,500.7	1,500.6	3.2	3.2	-178.24	-0.8	18.2	34.0	27.5	6.42	5.288		
1,600.0	1,598.9	1,601.7	1,601.6	3.5	3.5	-178.09	-1.2	12.9	39.0	32.2	6.82	5.721		
1,700.0	1,698.4	1,701.7	1,701.3	3.7	3.7	-177.81	-1.6	6.1	42.6	35.4	7.24	5.887		
1,800.0	1,797.8	1,801.6	1,801.0	3.9	3.9	-177.56	-2.0	-0.6	46.2	38.5	7.65	6.030		
1,900.0	1,897.3	1,901.5	1,900.7	4.2	4.1	-177.35	-2.4	-7.4	49.7	41.6	8.08	6.155		
2,000.0	1,996.8	2,001.5	2,000.4	4.5	4.3	-177.17	-2.8	-14.2	53.3	44.8	8.51	6.263		
2,100.0	2,096.2	2,101.4	2,100.1	4.7	4.6	-177.02	-3.2	-21.0	56.8	47.9	8.94	6.359		
2,200.0	2,195.7	2,201.3	2,199.8	5.0	4.8	-176.88	-3.6	-27.8	60.4	51.0	9.37	6.443		
2,300.0	2,295.2	2,301.3	2,299.5	5.3	5.0	-176.75	-4.0	-34.6	64.0	54.1	9.81	6.518		
2,400.0	2,394.6	2,401.2	2,399.2	5.5	5.3	-176.64	-4.4	-41.3	67.5	57.3	10.25	6.585		
2,500.0	2,494.1	2,501.2	2,498.9	5.8	5.5	-176.54	-4.8	-48.1	71.1	60.4	10.70	6.644		
2,600.0	2,593.6	2,601.1	2,598.6	6.1	5.7	-176.45	-5.2	-54.9	74.6	63.5	11.14	6.698		
2,700.0	2,693.0	2,701.0	2,698.3	6.4	6.0	-176.37	-5.6	-61.7	78.2	66.6	11.59	6.747		
2,800.0	2,792.5	2,801.0	2,798.0	6.7	6.2	-176.30	-6.0	-68.5	81.8	69.7	12.04	6.791		
2,900.0	2,892.0	2,900.9	2,897.7	7.0	6.5	-176.23	-6.4	-75.2	85.3	72.8	12.49	6.831		
3,000.0	2,991.4	3,000.8	2,997.4	7.2	6.7	-176.16	-6.8	-82.0	88.9	75.9	12.94	6.868		
3,100.0	3,090.9	3,100.8	3,097.1	7.5	7.0	-176.11	-7.3	-88.8	92.5	79.1	13.40	6.902		
3,200.0	3,190.4	3,200.7	3,196.8	7.8	7.2	-176.05	-7.7	-95.6	96.0	82.2	13.85	6.933		
3,300.0	3,289.8	3,300.6	3,296.6	8.1	7.5	-176.00	-8.1	-102.4	99.6	85.3	14.30	6.961		
3,400.0	3,389.3	3,400.6	3,396.3	8.4	7.7	-175.96	-8.5	-109.2	103.1	88.4	14.76	6.988		
3,500.0	3,488.8	3,500.5	3,496.0	8.7	8.0	-175.91	-8.9	-115.9	106.7	91.5	15.22	7.012		
3,600.0	3,588.2	3,600.5	3,595.7	9.0	8.2	-175.87	-9.3	-122.7	110.3	94.6	15.67	7.035		
3,700.0	3,687.7	3,700.4	3,695.4	9.3	8.5	-175.83	-9.7	-129.5	113.8	97.7	16.13	7.056		
3,800.0	3,787.2	3,800.3	3,795.1	9.6	8.7	-175.80	-10.1	-136.3	117.4	100.8	16.59	7.076		
3,900.0	3,886.6	3,896.6	3,891.2	9.8	8.9	-175.84	-10.4	-141.5	122.3	105.3	17.02	7.184		
4,000.0	3,986.1	3,992.1	3,986.7	10.1	9.1	-176.05	-10.5	-143.6	130.5	113.1	17.44	7.484		
4,100.0	4,085.6	4,091.0	4,085.6	10.4	9.3	-176.33	-10.5	-143.6	140.8	122.9	17.86	7.879		
4,200.0	4,185.0	4,190.4	4,185.0	10.7	9.5	-176.58	-10.5	-143.6	151.1	132.8	18.30	8.254		
4,300.0	4,284.5	4,289.9	4,284.5	11.0	9.7	-176.80	-10.5	-143.6	161.4	142.6	18.74	8.610		
4,400.0	4,383.9	4,389.4	4,383.9	11.3	9.9	-176.99	-10.5	-143.6	171.7	152.5	19.19	8.949		
4,500.0	4,483.4	4,488.8	4,483.4	11.6	10.1	-177.17	-10.5	-143.6	182.0	162.4	19.63	9.273		
4,600.0	4,582.9	4,588.3	4,582.9	11.9	10.3	-177.32	-10.5	-143.6	192.3	172.2	20.07	9.582		
4,700.0	4,682.3	4,687.8	4,682.3	12.2	10.5	-177.45	-10.5	-143.6	202.6	182.1	20.52	9.877		
4,800.0	4,781.9	4,787.3	4,781.9	12.5	10.7	-177.57	-10.5	-143.6	211.9	190.9	20.96	10.111		
4,900.0	4,881.7	4,887.2	4,881.7	12.6	10.9	-177.64	-10.5	-143.6	217.8	196.4	21.36	10.197		
5,000.0	4,981.7	4,987.1	4,981.7	12.8	11.1	-177.67	-10.5	-143.6	220.1	198.4	21.73	10.131		
5,100.0	5,081.7	5,087.1	5,081.7	13.0	11.3	91.70	-10.5	-143.6	220.2	198.1	22.13	9.949		

CC - Min centre to center distance or convergent point, SF - min separation factor, ES - min ellipse separation

Company:	Synergy Resources	Local Co-ordinate Reference:	Well SRC Gies T-15-22NHZ
Project:	SEC.15-T7N-R65W	TVD Reference:	WELL @ 4851.0ft (Original Well Elev)
Reference Site:	SRC Gies Pad Sec.15-T7N-R65W	MD Reference:	WELL @ 4851.0ft (Original Well Elev)
Site Error:	0.0ft	North Reference:	True
Reference Well:	SRC Gies T-15-22NHZ	Survey Calculation Method:	Minimum Curvature
Well Error:	0.0ft	Output errors are at	2.00 sigma
Reference Wellbore	Wellbore #1	Database:	landmark
Reference Design:	Plan #1 (5-7-14)	Offset TVD Reference:	Offset Datum

Offset Design												Offset Site Error:	0.0 ft
Survey Program: 0-MWD												Offset Well Error:	0.0 ft
Reference		Offset		Semi Major Axis			Distance						
Measured Depth (ft)	Vertical Depth (ft)	Measured Depth (ft)	Vertical Depth (ft)	Reference (ft)	Offset (ft)	Highside Toolface (°)	Offset Wellbore Centre +N/-S (ft)	+E/-W (ft)	Between Centres (ft)	Between Ellipses (ft)	Minimum Separation (ft)	Separation Factor	Warning
5,200.0	5,181.7	5,181.7	5,181.7	13.2	11.6	91.70	-10.5	-143.6	220.2	197.6	22.55	9.764	
5,300.0	5,281.7	5,281.7	5,281.7	13.3	11.8	91.70	-10.5	-143.6	220.2	197.2	22.97	9.586	
5,400.0	5,381.7	5,381.7	5,381.7	13.5	12.0	91.70	-10.5	-143.6	220.2	196.8	23.39	9.413	
5,500.0	5,481.7	5,481.7	5,481.7	13.7	12.2	91.70	-10.5	-143.6	220.2	196.4	23.81	9.246	
5,600.0	5,581.7	5,581.7	5,581.7	13.9	12.4	91.70	-10.5	-143.6	220.2	196.0	24.24	9.085	
5,700.0	5,681.7	5,681.7	5,681.7	14.1	12.6	91.70	-10.5	-143.6	220.2	195.5	24.66	8.929	
5,800.0	5,781.7	5,781.7	5,781.7	14.3	12.8	91.70	-10.5	-143.6	220.2	195.1	25.09	8.778	
5,900.0	5,881.7	5,881.7	5,881.7	14.5	13.0	91.70	-10.5	-143.6	220.2	194.7	25.51	8.631	
6,000.0	5,981.7	5,981.7	5,981.7	14.7	13.3	91.70	-10.5	-143.6	220.2	194.3	25.94	8.489	
6,100.0	6,081.7	6,081.7	6,081.7	14.8	13.5	91.70	-10.5	-143.6	220.2	193.8	26.37	8.352	
6,200.0	6,181.7	6,181.7	6,181.7	15.0	13.7	91.70	-10.5	-143.6	220.2	193.4	26.79	8.218	
6,300.0	6,281.7	6,281.7	6,281.7	15.2	13.9	91.70	-10.5	-143.6	220.2	193.0	27.22	8.089	
6,400.0	6,381.7	6,381.7	6,381.7	15.4	14.1	91.70	-10.5	-143.6	220.2	192.5	27.65	7.963	
6,500.0	6,481.7	6,481.7	6,481.7	15.6	14.3	91.70	-10.5	-143.6	220.2	192.1	28.08	7.841	
6,600.0	6,581.6	6,581.6	6,581.6	15.8	14.5	-88.69	-10.5	-143.6	220.1	191.6	28.49	7.726	
6,645.1	6,626.4	6,631.8	6,626.4	15.9	14.6	-90.00	-10.5	-143.6	220.1	191.4	28.67	7.676	
6,700.0	6,680.4	6,685.9	6,680.4	16.0	14.8	-92.53	-10.5	-143.6	220.3	191.4	28.89	7.626	
6,800.0	6,776.2	6,781.6	6,776.2	16.2	15.0	-99.31	-10.5	-143.6	223.4	194.1	29.29	7.629	
6,900.0	6,867.0	6,881.3	6,875.7	16.4	15.2	-107.75	-15.2	-143.6	232.8	203.3	29.55	7.878	
7,000.0	6,951.1	6,988.3	6,980.7	16.6	15.4	-115.57	-35.3	-143.5	247.5	217.9	29.53	8.381	
7,100.0	7,027.0	7,102.6	7,088.2	17.0	15.6	-122.41	-73.8	-143.4	265.8	236.6	29.17	9.111	
7,200.0	7,093.0	7,225.4	7,195.2	17.4	15.9	-128.16	-133.6	-143.1	285.8	257.2	28.59	9.997	
7,300.0	7,148.0	7,357.3	7,297.1	18.0	16.3	-132.83	-217.1	-142.8	305.7	277.7	28.01	10.913	
7,400.0	7,190.8	7,498.5	7,387.2	18.7	17.1	-136.42	-325.7	-142.4	323.4	295.7	27.74	11.658	
7,500.0	7,220.6	7,648.5	7,457.6	19.6	18.2	-138.96	-457.7	-141.9	337.3	309.2	28.12	11.995	
7,600.0	7,236.9	7,805.1	7,500.1	20.7	19.8	-140.43	-608.2	-141.3	345.9	316.5	29.40	11.767	
7,700.0	7,240.0	7,949.8	7,510.0	21.9	21.5	-140.82	-752.3	-140.8	348.3	316.9	31.41	11.087	
7,800.0	7,240.0	8,049.8	7,510.0	23.2	22.8	-140.82	-852.2	-140.4	348.3	315.1	33.20	10.490	
7,900.0	7,240.0	8,149.8	7,510.0	24.6	24.2	-140.83	-952.2	-140.0	348.3	313.2	35.10	9.922	
8,000.0	7,240.0	8,249.8	7,510.0	26.0	25.6	-140.83	-1,052.2	-139.6	348.3	311.2	37.10	9.389	
8,100.0	7,240.0	8,349.8	7,510.0	27.5	27.2	-140.83	-1,152.2	-139.2	348.3	309.1	39.17	8.890	
8,200.0	7,240.0	8,449.8	7,510.0	29.1	28.7	-140.83	-1,252.2	-138.9	348.3	306.9	41.32	8.428	
8,300.0	7,240.0	8,549.8	7,510.0	30.7	30.3	-140.83	-1,352.2	-138.5	348.3	304.7	43.53	8.001	
8,400.0	7,240.0	8,649.8	7,510.0	32.3	32.0	-140.83	-1,452.2	-138.1	348.3	302.5	45.79	7.606	
8,500.0	7,240.0	8,749.8	7,510.0	34.0	33.6	-140.83	-1,552.2	-137.7	348.3	300.2	48.09	7.242	
8,600.0	7,240.0	8,849.8	7,510.0	35.7	35.3	-140.83	-1,652.2	-137.3	348.2	297.8	50.43	6.906	
8,700.0	7,240.0	8,949.8	7,510.0	37.4	37.1	-140.83	-1,752.2	-137.0	348.2	295.4	52.80	6.596	
8,800.0	7,240.0	9,049.8	7,510.0	39.1	38.8	-140.83	-1,852.2	-136.6	348.2	293.0	55.20	6.309	
8,900.0	7,240.0	9,149.8	7,510.0	40.9	40.6	-140.84	-1,952.2	-136.2	348.2	290.6	57.62	6.043	
9,000.0	7,240.0	9,249.8	7,510.0	42.6	42.3	-140.84	-2,052.2	-135.8	348.2	288.2	60.07	5.797	
9,100.0	7,240.0	9,349.8	7,510.0	44.4	44.1	-140.84	-2,152.2	-135.4	348.2	285.7	62.54	5.568	
9,200.0	7,240.0	9,449.8	7,510.0	46.2	45.9	-140.84	-2,252.2	-135.1	348.2	283.2	65.02	5.356	
9,300.0	7,240.0	9,549.8	7,510.0	48.0	47.7	-140.84	-2,352.2	-134.7	348.2	280.7	67.52	5.157	
9,400.0	7,240.0	9,649.8	7,510.0	49.8	49.5	-140.84	-2,452.2	-134.3	348.2	278.2	70.03	4.972	
9,500.0	7,240.0	9,749.8	7,510.0	51.6	51.4	-140.84	-2,552.2	-133.9	348.2	275.7	72.55	4.799	
9,600.0	7,240.0	9,849.8	7,510.0	53.5	53.2	-140.84	-2,652.2	-133.5	348.2	273.1	75.09	4.637	
9,700.0	7,240.0	9,949.8	7,510.0	55.3	55.0	-140.84	-2,752.2	-133.2	348.2	270.6	77.63	4.485	
9,800.0	7,240.0	10,049.8	7,510.0	57.1	56.9	-140.84	-2,852.2	-132.8	348.2	268.0	80.18	4.342	
9,900.0	7,240.0	10,149.8	7,510.0	59.0	58.7	-140.85	-2,952.2	-132.4	348.2	265.4	82.74	4.208	
10,000.0	7,240.0	10,249.8	7,510.0	60.8	60.6	-140.85	-3,052.2	-132.0	348.2	262.9	85.31	4.081	
10,100.0	7,240.0	10,349.8	7,510.0	62.7	62.4	-140.85	-3,152.2	-131.6	348.2	260.3	87.89	3.962	
10,200.0	7,240.0	10,449.8	7,510.0	64.5	64.3	-140.85	-3,252.2	-131.2	348.2	257.7	90.47	3.848	

CC - Min centre to center distance or convergent point, SF - min separation factor, ES - min ellipse separation

Company:	Synergy Resources	Local Co-ordinate Reference:	Well SRC Gies T-15-22NHZ
Project:	SEC.15-T7N-R65W	TVD Reference:	WELL @ 4851.0ft (Original Well Elev)
Reference Site:	SRC Gies Pad Sec.15-T7N-R65W	MD Reference:	WELL @ 4851.0ft (Original Well Elev)
Site Error:	0.0ft	North Reference:	True
Reference Well:	SRC Gies T-15-22NHZ	Survey Calculation Method:	Minimum Curvature
Well Error:	0.0ft	Output errors are at	2.00 sigma
Reference Wellbore	Wellbore #1	Database:	landmark
Reference Design:	Plan #1 (5-7-14)	Offset TVD Reference:	Offset Datum

Offset Design SRC Gies Pad Sec.15-T7N-R65W - SRC Gies D-15-22CHZ - Wellbore #1 - Plan #1 (5-7-14)												Offset Site Error:	0.0 ft
Survey Program: 0-MWD												Offset Well Error:	0.0 ft
Reference		Offset		Semi Major Axis			Distance						
Measured Depth (ft)	Vertical Depth (ft)	Measured Depth (ft)	Vertical Depth (ft)	Reference (ft)	Offset (ft)	Highside Toolface (°)	Offset Wellbore Centre +N/-S (ft)	+E/-W (ft)	Between Centres (ft)	Between Ellipses (ft)	Minimum Separation (ft)	Separation Factor	Warning
10,300.0	7,240.0	10,549.8	7,510.0	66.4	66.1	-140.85	-3,352.2	-130.9	348.2	255.1	93.06	3.741	
10,400.0	7,240.0	10,649.8	7,510.0	68.3	68.0	-140.85	-3,452.2	-130.5	348.2	252.5	95.65	3.640	
10,500.0	7,240.0	10,749.8	7,510.0	70.1	69.9	-140.85	-3,552.2	-130.1	348.2	249.9	98.24	3.544	
10,600.0	7,240.0	10,849.8	7,510.0	72.0	71.8	-140.85	-3,652.2	-129.7	348.2	247.3	100.85	3.452	
10,700.0	7,240.0	10,949.8	7,510.0	73.9	73.6	-140.85	-3,752.2	-129.3	348.1	244.7	103.45	3.365	
10,800.0	7,240.0	11,049.8	7,510.0	75.7	75.5	-140.85	-3,852.2	-129.0	348.1	242.1	106.06	3.283	
10,900.0	7,240.0	11,149.8	7,510.0	77.6	77.4	-140.86	-3,952.2	-128.6	348.1	239.5	108.67	3.204	
11,000.0	7,240.0	11,249.8	7,510.0	79.5	79.3	-140.86	-4,052.2	-128.2	348.1	236.8	111.29	3.128	
11,100.0	7,240.0	11,349.8	7,510.0	81.4	81.2	-140.86	-4,152.2	-127.8	348.1	234.2	113.90	3.056	
11,200.0	7,240.0	11,449.8	7,510.0	83.3	83.0	-140.86	-4,252.2	-127.4	348.1	231.6	116.53	2.988	
11,300.0	7,240.0	11,549.8	7,510.0	85.2	84.9	-140.86	-4,352.2	-127.1	348.1	229.0	119.15	2.922	
11,400.0	7,240.0	11,649.8	7,510.0	87.1	86.8	-140.86	-4,452.2	-126.7	348.1	226.3	121.77	2.859	
11,463.8	7,240.0	11,713.6	7,510.0	88.3	88.0	-140.86	-4,516.0	-126.4	348.1	224.7	123.45	2.820 SF	

Company:	Synergy Resources	Local Co-ordinate Reference:	Well SRC Gies T-15-22NHZ
Project:	SEC.15-T7N-R65W	TVD Reference:	WELL @ 4851.0ft (Original Well Elev)
Reference Site:	SRC Gies Pad Sec.15-T7N-R65W	MD Reference:	WELL @ 4851.0ft (Original Well Elev)
Site Error:	0.0ft	North Reference:	True
Reference Well:	SRC Gies T-15-22NHZ	Survey Calculation Method:	Minimum Curvature
Well Error:	0.0ft	Output errors are at	2.00 sigma
Reference Wellbore	Wellbore #1	Database:	landmark
Reference Design:	Plan #1 (5-7-14)	Offset TVD Reference:	Offset Datum

Offset Design													Offset Site Error:	0.0 ft
Survey Program: 0-MWD													Offset Well Error:	0.0 ft
Reference		Offset		Semi Major Axis			Distance							Warning
Measured Depth (ft)	Vertical Depth (ft)	Measured Depth (ft)	Vertical Depth (ft)	Reference (ft)	Offset (ft)	Highside Toolface (°)	Offset Wellbore Centre +N/-S (ft)	+E/-W (ft)	Between Centres (ft)	Between Ellipses (ft)	Minimum Separation (ft)	Separation Factor		
0.0	0.0	0.0	0.0	0.0	0.0	91.58	-1.1	39.7	39.7					
100.0	100.0	100.0	100.0	0.1	0.1	91.58	-1.1	39.7	39.7	39.5	0.22	176.828		
200.0	200.0	200.0	200.0	0.3	0.3	91.58	-1.1	39.7	39.7	39.1	0.67	58.943		
300.0	300.0	300.0	300.0	0.6	0.6	91.58	-1.1	39.7	39.7	38.6	1.12	35.366		
400.0	400.0	400.0	400.0	0.8	0.8	91.58	-1.1	39.7	39.7	38.2	1.57	25.261		
500.0	500.0	500.0	500.0	1.0	1.0	91.58	-1.1	39.7	39.7	37.7	2.02	19.648		
600.0	600.0	600.0	600.0	1.2	1.2	91.58	-1.1	39.7	39.7	37.3	2.47	16.075		
700.0	700.0	700.0	700.0	1.5	1.5	91.58	-1.1	39.7	39.7	36.8	2.92	13.602		
800.0	800.0	800.0	800.0	1.7	1.7	91.58	-1.1	39.7	39.7	36.4	3.37	11.789		
900.0	900.0	900.0	900.0	1.9	1.9	91.58	-1.1	39.7	39.7	35.9	3.82	10.402		
1,000.0	1,000.0	1,000.0	1,000.0	2.1	2.1	91.58	-1.1	39.7	39.7	35.5	4.27	9.307 CC, ES		
1,100.0	1,100.0	1,099.5	1,099.5	2.4	2.3	92.17	-1.5	40.7	40.8	36.1	4.69	8.692		
1,200.0	1,200.0	1,199.5	1,199.5	2.6	2.5	92.86	-2.1	42.0	42.0	36.9	5.11	8.230		
1,300.0	1,300.0	1,299.4	1,299.4	2.8	2.7	-176.02	-2.6	43.2	45.0	39.5	5.51	8.172		
1,400.0	1,399.8	1,399.2	1,399.2	3.0	2.9	-175.88	-3.2	44.4	51.5	45.6	5.91	8.725		
1,500.0	1,499.5	1,498.7	1,498.7	3.2	3.1	-176.01	-3.8	45.7	61.5	55.2	6.30	9.758		
1,600.0	1,598.9	1,598.0	1,598.0	3.5	3.3	-176.19	-4.3	46.9	73.1	66.3	6.71	10.883		
1,700.0	1,698.4	1,697.4	1,697.3	3.7	3.5	-176.33	-4.9	48.2	84.6	77.5	7.13	11.869		
1,800.0	1,797.8	1,796.7	1,796.6	3.9	3.8	-176.43	-5.4	49.4	96.2	88.6	7.55	12.737		
1,900.0	1,897.3	1,896.0	1,895.9	4.2	4.0	-176.51	-6.0	50.6	107.8	99.8	7.98	13.507		
2,000.0	1,996.8	1,995.4	1,995.3	4.5	4.2	-176.58	-6.5	51.9	119.3	110.9	8.41	14.192		
2,100.0	2,096.2	2,094.7	2,094.6	4.7	4.4	-176.63	-7.1	53.1	130.9	122.1	8.84	14.806		
2,200.0	2,195.7	2,194.0	2,193.9	5.0	4.6	-176.68	-7.6	54.3	142.5	133.2	9.28	15.358		
2,300.0	2,295.2	2,293.3	2,293.2	5.3	4.8	-176.72	-8.2	55.6	154.0	144.3	9.71	15.857		
2,400.0	2,394.6	2,392.7	2,392.5	5.5	5.0	-176.75	-8.7	56.8	165.6	155.4	10.15	16.310		
2,500.0	2,494.1	2,492.0	2,491.9	5.8	5.3	-176.78	-9.3	58.0	177.2	166.6	10.59	16.722		
2,600.0	2,593.6	2,591.3	2,591.2	6.1	5.5	-176.80	-9.8	59.3	188.7	177.7	11.04	17.099		
2,700.0	2,693.0	2,690.7	2,690.5	6.4	5.7	-176.83	-10.4	60.5	200.3	188.8	11.48	17.446		
2,800.0	2,792.5	2,790.0	2,789.8	6.7	5.9	-176.85	-10.9	61.7	211.9	200.0	11.93	17.764		
2,900.0	2,892.0	2,889.3	2,889.1	7.0	6.1	-176.86	-11.5	63.0	223.4	211.1	12.37	18.058		
3,000.0	2,991.4	2,988.6	2,988.5	7.2	6.4	-176.88	-12.0	64.2	235.0	222.2	12.82	18.330		
3,100.0	3,090.9	3,088.0	3,087.8	7.5	6.6	-176.89	-12.6	65.4	246.6	233.3	13.27	18.583		
3,200.0	3,190.4	3,187.3	3,187.1	7.8	6.8	-176.91	-13.1	66.7	258.2	244.4	13.72	18.818		
3,300.0	3,289.8	3,286.6	3,286.4	8.1	7.0	-176.92	-13.7	67.9	269.7	255.6	14.17	19.037		
3,400.0	3,389.3	3,386.0	3,385.7	8.4	7.2	-176.93	-14.2	69.1	281.3	266.7	14.62	19.242		
3,500.0	3,488.8	3,485.3	3,485.1	8.7	7.5	-176.94	-14.8	70.4	292.9	277.8	15.07	19.434		
3,600.0	3,588.2	3,584.6	3,584.4	9.0	7.7	-176.95	-15.3	71.6	304.4	288.9	15.52	19.614		
3,700.0	3,687.7	3,683.9	3,683.7	9.3	7.9	-176.96	-15.9	72.8	316.0	300.0	15.97	19.784		
3,800.0	3,787.2	3,783.3	3,783.0	9.6	8.1	-176.97	-16.4	74.1	327.6	311.1	16.43	19.943		
3,900.0	3,886.6	3,882.6	3,882.3	9.8	8.4	-176.97	-17.0	75.3	339.1	322.3	16.88	20.094		
4,000.0	3,986.1	3,984.6	3,984.3	10.1	8.6	-176.99	-17.5	76.5	350.6	333.3	17.33	20.227		
4,100.0	4,085.6	4,085.8	4,085.6	10.4	8.8	-177.07	-17.5	76.5	361.0	343.2	17.77	20.311		
4,200.0	4,185.0	4,185.3	4,185.0	10.7	9.0	-177.15	-17.5	76.5	371.3	353.1	18.20	20.396		
4,300.0	4,284.5	4,284.8	4,284.5	11.0	9.2	-177.23	-17.5	76.5	381.6	363.0	18.64	20.475		
4,400.0	4,383.9	4,384.2	4,383.9	11.3	9.4	-177.30	-17.5	76.5	391.9	372.9	19.07	20.550		
4,500.0	4,483.4	4,483.7	4,483.4	11.6	9.6	-177.37	-17.5	76.5	402.2	382.7	19.51	20.620		
4,600.0	4,582.9	4,583.2	4,582.9	11.9	9.8	-177.44	-17.5	76.5	412.6	392.6	19.94	20.686		
4,700.0	4,682.3	4,682.6	4,682.3	12.2	10.0	-177.50	-17.5	76.5	422.9	402.5	20.38	20.748		
4,800.0	4,781.9	4,782.2	4,781.9	12.5	10.2	-177.56	-17.5	76.5	432.1	411.3	20.83	20.749		
4,900.0	4,881.7	4,882.0	4,881.7	12.6	10.4	-177.60	-17.5	76.5	438.0	416.8	21.23	20.630		
5,000.0	4,981.7	4,982.0	4,981.7	12.8	10.6	-177.61	-17.5	76.5	440.4	418.8	21.61	20.378		
5,100.0	5,081.7	5,082.0	5,081.7	13.0	10.8	91.76	-17.5	76.5	440.4	418.4	22.01	20.011		

CC - Min centre to center distance or convergent point, SF - min separation factor, ES - min ellipse separation

Company:	Synergy Resources	Local Co-ordinate Reference:	Well SRC Gies T-15-22NHZ
Project:	SEC.15-T7N-R65W	TVD Reference:	WELL @ 4851.0ft (Original Well Elev)
Reference Site:	SRC Gies Pad Sec.15-T7N-R65W	MD Reference:	WELL @ 4851.0ft (Original Well Elev)
Site Error:	0.0ft	North Reference:	True
Reference Well:	SRC Gies T-15-22NHZ	Survey Calculation Method:	Minimum Curvature
Well Error:	0.0ft	Output errors are at	2.00 sigma
Reference Wellbore	Wellbore #1	Database:	landmark
Reference Design:	Plan #1 (5-7-14)	Offset TVD Reference:	Offset Datum

Offset Design		SRC Gies Pad Sec.15-T7N-R65W - SRC Gies D-15-22NHZ - Wellbore #1 - Plan #1 (5-7-14)										Offset Site Error:		0.0 ft	
Survey Program: 0-MWD												Offset Well Error:		0.0 ft	
Reference		Offset		Semi Major Axis		Distance							Warning		
Measured Depth Depth (ft)	Vertical Depth (ft)	Measured Depth (ft)	Vertical Depth (ft)	Reference (ft)	Offset (ft)	Highside Toolface (°)	Offset Wellbore Centre +N/-S (ft)	+E/-W (ft)	Between Centres (ft)	Between Ellipses (ft)	Minimum Separation (ft)	Separation Factor			
5,200.0	5,181.7	5,182.0	5,181.7	13.2	11.0	91.76	-17.5	76.5	440.4	418.0	22.42	19.643			
5,300.0	5,281.7	5,282.0	5,281.7	13.3	11.2	91.76	-17.5	76.5	440.4	417.6	22.84	19.287			
5,400.0	5,381.7	5,382.0	5,381.7	13.5	11.5	91.76	-17.5	76.5	440.4	417.2	23.25	18.942			
5,500.0	5,481.7	5,482.0	5,481.7	13.7	11.7	91.76	-17.5	76.5	440.4	416.8	23.67	18.609			
5,600.0	5,581.7	5,582.0	5,581.7	13.9	11.9	91.76	-17.5	76.5	440.4	416.4	24.09	18.286			
5,700.0	5,681.7	5,682.0	5,681.7	14.1	12.1	91.76	-17.5	76.5	440.4	415.9	24.50	17.974			
5,800.0	5,781.7	5,782.0	5,781.7	14.3	12.3	91.76	-17.5	76.5	440.4	415.5	24.92	17.671			
5,900.0	5,881.7	5,882.0	5,881.7	14.5	12.5	91.76	-17.5	76.5	440.4	415.1	25.35	17.378			
6,000.0	5,981.7	5,982.0	5,981.7	14.7	12.7	91.76	-17.5	76.5	440.4	414.7	25.77	17.093			
6,100.0	6,081.7	6,082.0	6,081.7	14.8	12.9	91.76	-17.5	76.5	440.4	414.2	26.19	16.817			
6,200.0	6,181.7	6,182.0	6,181.7	15.0	13.2	91.76	-17.5	76.5	440.4	413.8	26.61	16.550			
6,300.0	6,281.7	6,282.0	6,281.7	15.2	13.4	91.76	-17.5	76.5	440.4	413.4	27.04	16.290			
6,400.0	6,381.7	6,382.0	6,381.7	15.4	13.6	91.76	-17.5	76.5	440.4	413.0	27.46	16.037			
6,500.0	6,481.7	6,482.0	6,481.7	15.6	13.8	91.76	-17.5	76.5	440.4	412.5	27.89	15.793			
6,600.0	6,581.6	6,580.8	6,580.4	15.8	14.0	-88.03	-19.7	76.5	440.4	412.1	28.29	15.569			
6,700.0	6,680.4	6,678.7	6,677.3	16.0	14.2	-88.07	-34.1	76.6	440.4	411.8	28.67	15.362			
6,800.0	6,776.2	6,776.7	6,771.3	16.2	14.4	-88.15	-61.6	76.7	440.4	411.3	29.08	15.145			
6,900.0	6,867.0	6,874.9	6,860.7	16.4	14.7	-88.26	-101.7	76.8	440.4	410.8	29.56	14.897			
7,000.0	6,951.1	6,973.1	6,944.0	16.6	15.0	-88.40	-153.7	77.0	440.3	410.1	30.17	14.593			
7,100.0	7,027.0	7,071.5	7,019.5	17.0	15.4	-88.58	-216.7	77.3	440.3	409.3	30.99	14.209			
7,200.0	7,093.0	7,170.1	7,085.7	17.4	15.9	-88.79	-289.6	77.5	440.2	408.2	32.06	13.733			
7,300.0	7,148.0	7,268.9	7,141.5	18.0	16.6	-89.01	-371.1	77.8	440.2	406.7	33.43	13.166			
7,400.0	7,190.8	7,368.0	7,185.5	18.7	17.5	-89.26	-459.8	78.2	440.1	405.0	35.13	12.528			
7,500.0	7,220.6	7,467.3	7,217.1	19.6	18.5	-89.52	-553.9	78.5	440.1	402.9	37.15	11.847			
7,600.0	7,236.9	7,566.9	7,235.3	20.7	19.6	-89.79	-651.7	78.9	440.1	400.6	39.44	11.157			
7,700.0	7,240.0	7,666.8	7,240.0	21.9	20.9	-90.00	-751.5	79.2	440.0	398.1	41.95	10.489			
7,800.0	7,240.0	7,766.8	7,240.0	23.2	22.3	-90.00	-851.5	79.6	440.0	395.4	44.66	9.854			
7,900.0	7,240.0	7,866.8	7,240.0	24.6	23.7	-90.00	-951.5	80.0	440.0	392.5	47.51	9.261			
8,000.0	7,240.0	7,966.8	7,240.0	26.0	25.2	-90.00	-1,051.5	80.4	440.0	389.5	50.50	8.713			
8,100.0	7,240.0	8,066.8	7,240.0	27.5	26.7	-90.00	-1,151.5	80.7	440.0	386.4	53.59	8.209			
8,200.0	7,240.0	8,166.8	7,240.0	29.1	28.3	-90.00	-1,251.5	81.1	439.9	383.2	56.78	7.748			
8,300.0	7,240.0	8,266.8	7,240.0	30.7	30.0	-90.00	-1,351.5	81.5	439.9	379.9	60.05	7.326			
8,400.0	7,240.0	8,366.8	7,240.0	32.3	31.6	-90.00	-1,451.5	81.8	439.9	376.5	63.38	6.941			
8,500.0	7,240.0	8,466.8	7,240.0	34.0	33.3	-90.00	-1,551.5	82.2	439.9	373.1	66.77	6.588			
8,600.0	7,240.0	8,566.8	7,240.0	35.7	35.1	-90.00	-1,651.5	82.6	439.9	369.7	70.20	6.266			
8,700.0	7,240.0	8,666.8	7,240.0	37.4	36.8	-90.00	-1,751.5	82.9	439.9	366.2	73.68	5.970			
8,800.0	7,240.0	8,766.8	7,240.0	39.1	38.5	-90.00	-1,851.5	83.3	439.8	362.6	77.19	5.698			
8,900.0	7,240.0	8,866.8	7,240.0	40.9	40.3	-90.00	-1,951.5	83.7	439.8	359.1	80.74	5.448			
9,000.0	7,240.0	8,966.8	7,240.0	42.6	42.1	-90.00	-2,051.5	84.1	439.8	355.5	84.31	5.217			
9,100.0	7,240.0	9,066.8	7,240.0	44.4	43.9	-90.00	-2,151.5	84.4	439.8	351.9	87.90	5.003			
9,200.0	7,240.0	9,166.8	7,240.0	46.2	45.7	-90.00	-2,251.4	84.8	439.8	348.2	91.51	4.805			
9,300.0	7,240.0	9,266.8	7,240.0	48.0	47.5	-90.00	-2,351.4	85.2	439.7	344.6	95.15	4.622			
9,400.0	7,240.0	9,366.8	7,240.0	49.8	49.4	-90.00	-2,451.4	85.5	439.7	340.9	98.80	4.451			
9,500.0	7,240.0	9,466.8	7,240.0	51.6	51.2	-90.00	-2,551.4	85.9	439.7	337.2	102.46	4.291			
9,600.0	7,240.0	9,566.8	7,240.0	53.5	53.0	-90.00	-2,651.4	86.3	439.7	333.5	106.14	4.143			
9,700.0	7,240.0	9,666.8	7,240.0	55.3	54.9	-90.00	-2,751.4	86.6	439.7	329.8	109.83	4.003			
9,800.0	7,240.0	9,766.8	7,240.0	57.1	56.7	-90.00	-2,851.4	87.0	439.6	326.1	113.53	3.873			
9,900.0	7,240.0	9,866.8	7,240.0	59.0	58.6	-90.00	-2,951.4	87.4	439.6	322.4	117.24	3.750			
10,000.0	7,240.0	9,966.8	7,240.0	60.8	60.4	-90.00	-3,051.4	87.8	439.6	318.7	120.96	3.634			
10,100.0	7,240.0	10,066.8	7,240.0	62.7	62.3	-90.00	-3,151.4	88.1	439.6	314.9	124.68	3.526			
10,200.0	7,240.0	10,166.8	7,240.0	64.5	64.2	-90.00	-3,251.4	88.5	439.6	311.2	128.42	3.423			
10,300.0	7,240.0	10,266.8	7,240.0	66.4	66.0	-90.00	-3,351.4	88.9	439.6	307.4	132.16	3.326			

CC - Min centre to center distance or convergent point, SF - min separation factor, ES - min ellipse separation

Company:	Synergy Resources	Local Co-ordinate Reference:	Well SRC Gies T-15-22NHZ
Project:	SEC.15-T7N-R65W	TVD Reference:	WELL @ 4851.0ft (Original Well Elev)
Reference Site:	SRC Gies Pad Sec.15-T7N-R65W	MD Reference:	WELL @ 4851.0ft (Original Well Elev)
Site Error:	0.0ft	North Reference:	True
Reference Well:	SRC Gies T-15-22NHZ	Survey Calculation Method:	Minimum Curvature
Well Error:	0.0ft	Output errors are at	2.00 sigma
Reference Wellbore	Wellbore #1	Database:	landmark
Reference Design:	Plan #1 (5-7-14)	Offset TVD Reference:	Offset Datum

Offset Design SRC Gies Pad Sec.15-T7N-R65W - SRC Gies D-15-22NHZ - Wellbore #1 - Plan #1 (5-7-14)												Offset Site Error:	0.0 ft
Survey Program: 0-MWD												Offset Well Error:	0.0 ft
Reference		Offset		Semi Major Axis			Distance						
Measured Depth (ft)	Vertical Depth (ft)	Measured Depth (ft)	Vertical Depth (ft)	Reference (ft)	Offset (ft)	Highside Toolface (°)	Offset Wellbore Centre +N/-S (ft)	+E/-W (ft)	Between Centres (ft)	Between Ellipses (ft)	Minimum Separation (ft)	Separation Factor	Warning
10,400.0	7,240.0	10,366.8	7,240.0	68.3	67.9	-90.00	-3,451.4	89.2	439.5	303.6	135.90	3.234	
10,500.0	7,240.0	10,466.8	7,240.0	70.1	69.8	-90.00	-3,551.4	89.6	439.5	299.9	139.65	3.147	
10,600.0	7,240.0	10,566.8	7,240.0	72.0	71.7	-90.00	-3,651.4	90.0	439.5	296.1	143.41	3.065	
10,700.0	7,240.0	10,666.8	7,240.0	73.9	73.6	-90.00	-3,751.4	90.3	439.5	292.3	147.17	2.986	
10,800.0	7,240.0	10,766.8	7,240.0	75.7	75.4	-90.00	-3,851.4	90.7	439.5	288.5	150.94	2.911	
10,900.0	7,240.0	10,866.8	7,240.0	77.6	77.3	-90.00	-3,951.4	91.1	439.4	284.7	154.71	2.840	
11,000.0	7,240.0	10,966.8	7,240.0	79.5	79.2	-90.00	-4,051.4	91.5	439.4	280.9	158.49	2.773	
11,100.0	7,240.0	11,066.8	7,240.0	81.4	81.1	-90.00	-4,151.4	91.8	439.4	277.1	162.26	2.708	
11,200.0	7,240.0	11,166.8	7,240.0	83.3	83.0	-90.00	-4,251.4	92.2	439.4	273.3	166.05	2.646	
11,300.0	7,240.0	11,266.8	7,240.0	85.2	84.9	-90.00	-4,351.4	92.6	439.4	269.5	169.83	2.587	
11,400.0	7,240.0	11,366.8	7,240.0	87.1	86.8	-90.00	-4,451.4	92.9	439.3	265.7	173.62	2.531	
11,463.8	7,240.0	11,430.7	7,240.0	88.3	88.0	-90.00	-4,515.3	93.2	439.3	263.3	176.04	2.496 SF	

Company:	Synergy Resources	Local Co-ordinate Reference:	Well SRC Gies T-15-22NHZ
Project:	SEC.15-T7N-R65W	TVD Reference:	WELL @ 4851.0ft (Original Well Elev)
Reference Site:	SRC Gies Pad Sec.15-T7N-R65W	MD Reference:	WELL @ 4851.0ft (Original Well Elev)
Site Error:	0.0ft	North Reference:	True
Reference Well:	SRC Gies T-15-22NHZ	Survey Calculation Method:	Minimum Curvature
Well Error:	0.0ft	Output errors are at	2.00 sigma
Reference Wellbore	Wellbore #1	Database:	landmark
Reference Design:	Plan #1 (5-7-14)	Offset TVD Reference:	Offset Datum

Offset Design													Offset Site Error:	0.0 ft
Survey Program: 0-MWD													Offset Well Error:	0.0 ft
Reference		Offset		Semi Major Axis			Distance							Warning
Measured Depth (ft)	Vertical Depth (ft)	Measured Depth (ft)	Vertical Depth (ft)	Reference (ft)	Offset (ft)	Highside Toolface (°)	Offset Wellbore Centre +N/-S (ft)	+E/-W (ft)	Between Centres (ft)	Between Ellipses (ft)	Minimum Separation (ft)	Separation Factor		
0.0	0.0	0.0	0.0	0.0	0.0	-87.93	0.7	-20.0	20.0					
100.0	100.0	100.0	100.0	0.1	0.1	-87.93	0.7	-20.0	20.0	19.8	0.22	89.057		
200.0	200.0	200.0	200.0	0.3	0.3	-87.93	0.7	-20.0	20.0	19.3	0.67	29.686		
300.0	300.0	300.0	300.0	0.6	0.6	-87.93	0.7	-20.0	20.0	18.9	1.12	17.811		
400.0	400.0	400.0	400.0	0.8	0.8	-87.93	0.7	-20.0	20.0	18.4	1.57	12.722		
500.0	500.0	500.0	500.0	1.0	1.0	-87.93	0.7	-20.0	20.0	18.0	2.02	9.895		
600.0	600.0	600.0	600.0	1.2	1.2	-87.93	0.7	-20.0	20.0	17.5	2.47	8.096 CC, ES		
700.0	700.0	699.3	699.2	1.5	1.4	-88.07	0.7	-21.7	21.7	18.8	2.91	7.478		
800.0	800.0	798.3	798.1	1.7	1.7	-88.40	0.8	-26.9	26.9	23.6	3.34	8.063		
900.0	900.0	896.9	896.3	1.9	1.9	-88.73	0.8	-35.4	35.6	31.8	3.79	9.380		
1,000.0	1,000.0	996.0	994.9	2.1	2.1	-88.98	0.8	-46.2	46.5	42.3	4.27	10.904		
1,100.0	1,100.0	1,095.4	1,093.7	2.4	2.4	-89.13	0.9	-57.2	57.5	52.8	4.75	12.101		
1,200.0	1,200.0	1,194.8	1,192.4	2.6	2.7	-89.23	0.9	-68.1	68.5	63.3	5.25	13.053		
1,300.0	1,300.0	1,294.3	1,291.4	2.8	2.9	1.35	1.0	-79.1	77.8	72.3	5.53	14.068		
1,400.0	1,399.8	1,394.2	1,390.6	3.0	3.2	1.36	1.0	-90.1	83.6	77.7	5.95	14.054		
1,500.0	1,499.5	1,494.1	1,490.0	3.2	3.5	1.44	1.0	-101.1	85.9	79.6	6.37	13.488		
1,600.0	1,598.9	1,594.1	1,589.4	3.5	3.8	1.53	1.1	-112.1	86.6	79.8	6.81	12.724		
1,700.0	1,698.4	1,694.1	1,688.8	3.7	4.1	1.63	1.1	-123.1	87.3	80.1	7.25	12.043		
1,800.0	1,797.8	1,794.1	1,788.2	3.9	4.4	1.72	1.2	-134.1	88.0	80.3	7.70	11.435		
1,900.0	1,897.3	1,894.1	1,887.5	4.2	4.7	1.81	1.2	-145.2	88.7	80.6	8.15	10.890		
2,000.0	1,996.8	1,994.1	1,986.9	4.5	5.0	1.91	1.3	-156.2	89.4	80.8	8.60	10.398		
2,100.0	2,096.2	2,094.1	2,086.3	4.7	5.3	2.00	1.3	-167.2	90.1	81.1	9.06	9.952		
2,200.0	2,195.7	2,194.1	2,185.7	5.0	5.6	2.08	1.3	-178.2	90.8	81.3	9.51	9.548		
2,300.0	2,295.2	2,294.1	2,285.1	5.3	5.9	2.17	1.4	-189.2	91.5	81.5	9.97	9.179		
2,400.0	2,394.6	2,394.1	2,384.5	5.5	6.2	2.26	1.4	-200.2	92.2	81.8	10.43	8.840		
2,500.0	2,494.1	2,494.1	2,483.9	5.8	6.5	2.34	1.5	-211.3	92.9	82.0	10.89	8.530		
2,600.0	2,593.6	2,594.1	2,583.3	6.1	6.8	2.42	1.5	-222.3	93.6	82.3	11.36	8.244		
2,700.0	2,693.0	2,694.1	2,682.7	6.4	7.1	2.51	1.6	-233.3	94.3	82.5	11.82	7.979		
2,800.0	2,792.5	2,794.1	2,782.0	6.7	7.4	2.59	1.6	-244.3	95.0	82.7	12.28	7.734		
2,900.0	2,892.0	2,894.1	2,881.4	7.0	7.7	2.67	1.6	-255.3	95.7	83.0	12.75	7.506		
3,000.0	2,991.4	2,994.1	2,980.8	7.2	8.0	2.74	1.7	-266.3	96.4	83.2	13.22	7.294		
3,100.0	3,090.9	3,094.1	3,080.2	7.5	8.3	2.82	1.7	-277.3	97.1	83.4	13.68	7.096		
3,200.0	3,190.4	3,194.1	3,179.6	7.8	8.6	2.90	1.8	-288.4	97.8	83.6	14.15	6.911		
3,300.0	3,289.8	3,294.1	3,279.0	8.1	9.0	2.97	1.8	-299.4	98.5	83.9	14.62	6.738		
3,400.0	3,389.3	3,394.1	3,378.4	8.4	9.3	3.05	1.9	-310.4	99.2	84.1	15.09	6.575		
3,500.0	3,488.8	3,494.1	3,477.8	8.7	9.6	3.12	1.9	-321.4	99.9	84.3	15.56	6.421		
3,600.0	3,588.2	3,594.1	3,577.2	9.0	9.9	3.19	1.9	-332.4	100.6	84.6	16.03	6.276		
3,700.0	3,687.7	3,694.1	3,676.5	9.3	10.2	3.26	2.0	-343.4	101.3	84.8	16.50	6.140		
3,800.0	3,787.2	3,794.1	3,775.9	9.6	10.5	3.33	2.0	-354.5	102.0	85.0	16.97	6.011		
3,900.0	3,886.6	3,894.1	3,875.3	9.8	10.8	3.40	2.1	-365.5	102.7	85.3	17.44	5.889		
4,000.0	3,986.1	3,994.1	3,974.7	10.1	11.1	3.47	2.1	-376.5	103.4	85.5	17.91	5.773		
4,100.0	4,085.6	4,094.1	4,074.1	10.4	11.4	3.54	2.2	-387.5	104.1	85.7	18.38	5.663		
4,200.0	4,185.0	4,194.1	4,173.5	10.7	11.7	3.60	2.2	-398.5	104.8	85.9	18.86	5.558		
4,300.0	4,284.5	4,294.1	4,272.9	11.0	12.0	3.67	2.2	-409.5	105.5	86.2	19.33	5.458		
4,400.0	4,383.9	4,394.1	4,372.3	11.3	12.3	3.73	2.3	-420.5	106.2	86.4	19.80	5.364		
4,500.0	4,483.4	4,494.1	4,471.7	11.6	12.6	3.80	2.3	-431.6	106.9	86.6	20.27	5.273		
4,600.0	4,582.9	4,594.1	4,571.0	11.9	12.9	3.86	2.4	-442.6	107.6	86.9	20.75	5.187		
4,700.0	4,682.3	4,694.1	4,670.4	12.2	13.2	3.92	2.4	-453.6	108.3	87.1	21.22	5.104		
4,800.0	4,781.9	4,794.0	4,769.8	12.5	13.5	3.95	2.5	-464.6	110.1	88.4	21.68	5.078		
4,900.0	4,881.7	4,893.9	4,869.1	12.6	13.9	3.86	2.5	-475.6	115.2	93.1	22.08	5.219		
5,000.0	4,981.7	4,993.5	4,968.1	12.8	14.2	3.68	2.5	-486.6	123.9	101.4	22.45	5.517		
5,100.0	5,081.7	5,092.9	5,066.9	13.0	14.5	-87.18	2.6	-497.5	134.8	111.9	22.87	5.895		

CC - Min centre to center distance or convergent point, SF - min separation factor, ES - min ellipse separation

Company:	Synergy Resources	Local Co-ordinate Reference:	Well SRC Gies T-15-22NHZ
Project:	SEC.15-T7N-R65W	TVD Reference:	WELL @ 4851.0ft (Original Well Elev)
Reference Site:	SRC Gies Pad Sec.15-T7N-R65W	MD Reference:	WELL @ 4851.0ft (Original Well Elev)
Site Error:	0.0ft	North Reference:	True
Reference Well:	SRC Gies T-15-22NHZ	Survey Calculation Method:	Minimum Curvature
Well Error:	0.0ft	Output errors are at	2.00 sigma
Reference Wellbore	Wellbore #1	Database:	landmark
Reference Design:	Plan #1 (5-7-14)	Offset TVD Reference:	Offset Datum

Offset Design												Offset Site Error:	0.0 ft
Survey Program: 0-MWD												Offset Well Error:	0.0 ft
Reference		Offset		Semi Major Axis			Distance						Warning
Measured Depth (ft)	Vertical Depth (ft)	Measured Depth (ft)	Vertical Depth (ft)	Reference (ft)	Offset (ft)	Highside Toolface (°)	Offset Wellbore Centre +N/-S (ft)	+E/-W (ft)	Between Centres (ft)	Between Ellipses (ft)	Minimum Separation (ft)	Separation Factor	
5,200.0	5,181.7	5,192.3	5,165.7	13.2	14.8	-87.38	2.6	-508.5	145.8	122.5	23.31	6.257	
5,300.0	5,281.7	5,291.7	5,264.4	13.3	15.1	-87.55	2.7	-519.4	156.8	133.1	23.74	6.605	
5,400.0	5,381.7	5,391.1	5,363.2	13.5	15.4	-87.69	2.7	-530.4	167.8	143.6	24.18	6.941	
5,500.0	5,481.7	5,490.5	5,462.0	13.7	15.7	-87.82	2.8	-541.3	178.8	154.2	24.62	7.264	
5,600.0	5,581.7	5,589.9	5,560.8	13.9	16.0	-87.93	2.8	-552.3	189.8	164.8	25.06	7.576	
5,700.0	5,681.7	5,689.3	5,659.6	14.1	16.3	-88.03	2.8	-563.2	200.9	175.4	25.50	7.877	
5,800.0	5,781.7	5,794.6	5,764.4	14.3	16.6	-88.12	2.9	-573.7	210.8	184.9	25.93	8.130	
5,900.0	5,881.7	5,902.4	5,872.0	14.5	16.8	-88.17	2.9	-580.5	217.2	190.8	26.33	8.248	
6,000.0	5,981.7	6,010.7	5,980.2	14.7	17.0	-88.19	2.9	-583.3	219.7	193.0	26.73	8.223	
6,100.0	6,081.7	6,112.2	6,081.7	14.8	17.1	-88.19	2.9	-583.4	219.8	192.7	27.13	8.104	
6,200.0	6,181.7	6,212.2	6,181.7	15.0	17.3	-88.19	2.9	-583.4	219.8	192.3	27.53	7.985	
6,300.0	6,281.7	6,312.2	6,281.7	15.2	17.4	-88.19	2.9	-583.4	219.8	191.9	27.93	7.869	
6,400.0	6,381.7	6,412.2	6,381.7	15.4	17.6	-88.19	2.9	-583.4	219.8	191.5	28.34	7.757	
6,500.0	6,481.7	6,512.2	6,481.7	15.6	17.8	-88.19	2.9	-583.4	219.8	191.1	28.75	7.647	
6,526.1	6,507.8	6,538.3	6,507.8	15.7	17.8	92.10	2.9	-583.4	219.8	191.0	28.85	7.621	
6,600.0	6,581.6	6,612.1	6,581.6	15.8	17.9	92.63	2.9	-583.4	219.9	190.8	29.14	7.547	
6,700.0	6,680.4	6,710.9	6,680.4	16.0	18.1	96.37	2.9	-583.4	221.1	191.5	29.56	7.480	
6,800.0	6,776.2	6,806.6	6,776.2	16.2	18.3	102.89	2.9	-583.4	226.1	196.1	30.02	7.532	
6,900.0	6,867.0	6,908.3	6,877.6	16.4	18.4	111.04	-2.0	-583.4	237.8	207.4	30.44	7.813	
7,000.0	6,951.1	7,018.1	6,985.3	16.6	18.6	118.49	-23.2	-583.3	254.2	223.6	30.58	8.311	
7,100.0	7,027.0	7,135.7	7,095.5	17.0	18.8	124.90	-63.7	-583.2	273.4	243.1	30.35	9.009	
7,200.0	7,093.0	7,262.1	7,204.8	17.4	19.1	130.21	-126.8	-582.9	293.7	263.9	29.78	9.863	
7,300.0	7,148.0	7,397.7	7,307.9	18.0	19.5	134.45	-214.7	-582.6	312.9	283.9	28.99	10.794	
7,400.0	7,190.8	7,542.6	7,397.6	18.7	20.1	137.61	-328.1	-582.1	329.4	301.1	28.24	11.664	
7,500.0	7,220.6	7,695.6	7,465.5	19.6	21.0	139.72	-464.9	-581.6	341.3	313.5	27.78	12.284	
7,600.0	7,236.9	7,854.1	7,503.7	20.7	22.4	140.76	-618.3	-581.0	347.5	319.6	27.90	12.454	
7,700.0	7,240.0	7,989.9	7,510.0	21.9	23.9	140.86	-753.9	-580.5	348.1	319.2	28.90	12.047	
7,800.0	7,240.0	8,089.9	7,510.0	23.2	25.0	140.86	-853.9	-580.2	348.1	317.5	30.61	11.372	
7,900.0	7,240.0	8,189.9	7,510.0	24.6	26.3	140.86	-953.9	-579.8	348.1	315.7	32.46	10.726	
8,000.0	7,240.0	8,289.9	7,510.0	26.0	27.7	140.86	-1,053.9	-579.4	348.1	313.7	34.41	10.116	
8,100.0	7,240.0	8,389.9	7,510.0	27.5	29.1	140.85	-1,153.9	-579.0	348.1	311.7	36.46	9.548	
8,200.0	7,240.0	8,489.9	7,510.0	29.1	30.6	140.85	-1,253.9	-578.6	348.1	309.6	38.59	9.021	
8,300.0	7,240.0	8,589.9	7,510.0	30.7	32.1	140.85	-1,353.9	-578.3	348.2	307.4	40.79	8.536	
8,400.0	7,240.0	8,689.9	7,510.0	32.3	33.7	140.85	-1,453.9	-577.9	348.2	305.1	43.04	8.090	
8,500.0	7,240.0	8,789.9	7,510.0	34.0	35.3	140.85	-1,553.9	-577.5	348.2	302.8	45.33	7.680	
8,600.0	7,240.0	8,889.9	7,510.0	35.7	36.9	140.85	-1,653.9	-577.1	348.2	300.5	47.67	7.304	
8,700.0	7,240.0	8,989.9	7,510.0	37.4	38.6	140.85	-1,753.9	-576.7	348.2	298.1	50.04	6.957	
8,800.0	7,240.0	9,089.9	7,510.0	39.1	40.3	140.85	-1,853.9	-576.4	348.2	295.7	52.45	6.639	
8,900.0	7,240.0	9,189.9	7,510.0	40.9	42.0	140.84	-1,953.9	-576.0	348.2	293.3	54.88	6.345	
9,000.0	7,240.0	9,289.9	7,510.0	42.6	43.7	140.84	-2,053.9	-575.6	348.2	290.9	57.33	6.073	
9,100.0	7,240.0	9,389.9	7,510.0	44.4	45.5	140.84	-2,153.9	-575.2	348.2	288.4	59.80	5.822	
9,200.0	7,240.0	9,489.9	7,510.0	46.2	47.2	140.84	-2,253.9	-574.8	348.2	285.9	62.30	5.590	
9,300.0	7,240.0	9,589.9	7,510.0	48.0	49.0	140.84	-2,353.9	-574.5	348.2	283.4	64.80	5.374	
9,400.0	7,240.0	9,689.9	7,510.0	49.8	50.8	140.84	-2,453.9	-574.1	348.2	280.9	67.32	5.172	
9,500.0	7,240.0	9,789.9	7,510.0	51.6	52.6	140.84	-2,553.9	-573.7	348.2	278.4	69.86	4.985	
9,600.0	7,240.0	9,889.9	7,510.0	53.5	54.4	140.84	-2,653.9	-573.3	348.2	275.8	72.40	4.810	
9,700.0	7,240.0	9,989.9	7,510.0	55.3	56.2	140.84	-2,753.9	-572.9	348.2	273.3	74.95	4.646	
9,800.0	7,240.0	10,089.9	7,510.0	57.1	58.0	140.83	-2,853.9	-572.6	348.2	270.7	77.52	4.492	
9,900.0	7,240.0	10,189.9	7,510.0	59.0	59.8	140.83	-2,953.9	-572.2	348.2	268.2	80.09	4.348	
10,000.0	7,240.0	10,289.9	7,510.0	60.8	61.6	140.83	-3,053.9	-571.8	348.3	265.6	82.67	4.213	
10,100.0	7,240.0	10,389.9	7,510.0	62.7	63.5	140.83	-3,153.9	-571.4	348.3	263.0	85.26	4.085	
10,200.0	7,240.0	10,489.9	7,510.0	64.5	65.3	140.83	-3,253.9	-571.0	348.3	260.4	87.85	3.964	

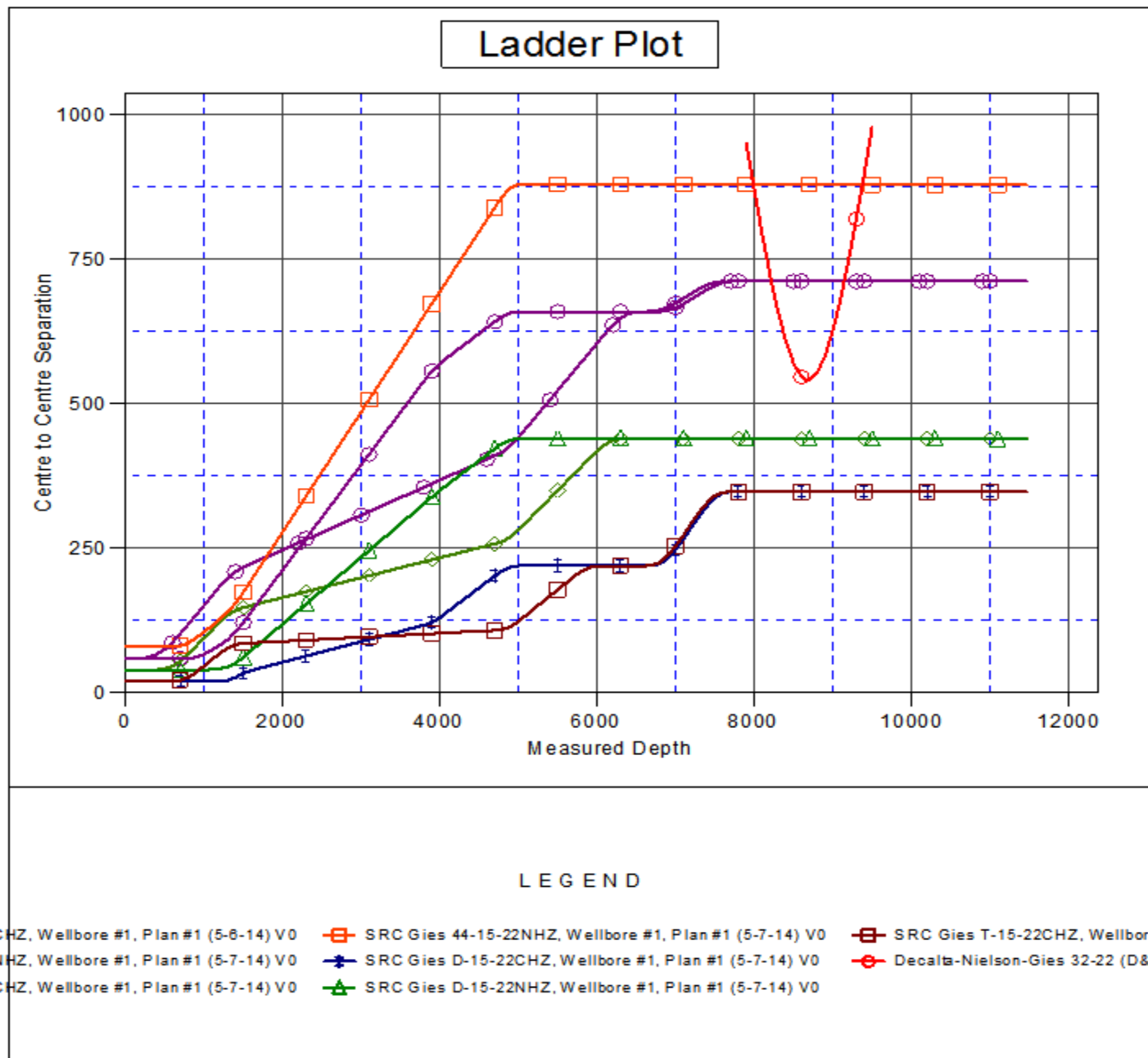
CC - Min centre to center distance or convergent point, SF - min separation factor, ES - min ellipse separation

Company:	Synergy Resources	Local Co-ordinate Reference:	Well SRC Gies T-15-22NHZ
Project:	SEC.15-T7N-R65W	TVD Reference:	WELL @ 4851.0ft (Original Well Elev)
Reference Site:	SRC Gies Pad Sec.15-T7N-R65W	MD Reference:	WELL @ 4851.0ft (Original Well Elev)
Site Error:	0.0ft	North Reference:	True
Reference Well:	SRC Gies T-15-22NHZ	Survey Calculation Method:	Minimum Curvature
Well Error:	0.0ft	Output errors are at	2.00 sigma
Reference Wellbore	Wellbore #1	Database:	landmark
Reference Design:	Plan #1 (5-7-14)	Offset TVD Reference:	Offset Datum

Offset Design SRC Gies Pad Sec.15-T7N-R65W - SRC Gies T-15-22CHZ - Wellbore #1 - Plan #1 (5-7-14)												Offset Site Error:	0.0 ft
Survey Program: 0-MWD												Offset Well Error:	0.0 ft
Reference		Offset		Semi Major Axis			Distance						Warning
Measured Depth (ft)	Vertical Depth (ft)	Measured Depth (ft)	Vertical Depth (ft)	Reference (ft)	Offset (ft)	Highside Toolface (°)	Offset Wellbore Centre +N/-S (ft)	+E/-W (ft)	Between Centres (ft)	Between Ellipses (ft)	Minimum Separation (ft)	Separation Factor	
10,300.0	7,240.0	10,589.9	7,510.0	66.4	67.1	140.83	-3,353.9	-570.7	348.3	257.8	90.45	3.851	
10,400.0	7,240.0	10,689.9	7,510.0	68.3	69.0	140.83	-3,453.9	-570.3	348.3	255.2	93.05	3.743	
10,500.0	7,240.0	10,789.9	7,510.0	70.1	70.8	140.83	-3,553.9	-569.9	348.3	252.6	95.66	3.641	
10,600.0	7,240.0	10,889.9	7,510.0	72.0	72.7	140.82	-3,653.9	-569.5	348.3	250.0	98.27	3.544	
10,700.0	7,240.0	10,989.9	7,510.0	73.9	74.6	140.82	-3,753.9	-569.1	348.3	247.4	100.89	3.452	
10,800.0	7,240.0	11,089.9	7,510.0	75.7	76.4	140.82	-3,853.9	-568.8	348.3	244.8	103.51	3.365	
10,900.0	7,240.0	11,189.9	7,510.0	77.6	78.3	140.82	-3,953.9	-568.4	348.3	242.2	106.13	3.282	
11,000.0	7,240.0	11,289.9	7,510.0	79.5	80.2	140.82	-4,053.9	-568.0	348.3	239.6	108.76	3.203	
11,100.0	7,240.0	11,389.9	7,510.0	81.4	82.0	140.82	-4,153.9	-567.6	348.3	236.9	111.39	3.127	
11,200.0	7,240.0	11,489.9	7,510.0	83.3	83.9	140.82	-4,253.9	-567.3	348.3	234.3	114.02	3.055	
11,300.0	7,240.0	11,589.9	7,510.0	85.2	85.8	140.82	-4,353.9	-566.9	348.3	231.7	116.66	2.986	
11,400.0	7,240.0	11,689.9	7,510.0	87.1	87.7	140.82	-4,453.9	-566.5	348.3	229.0	119.29	2.920	
11,436.0	7,240.0	11,725.9	7,510.0	87.7	88.3	140.81	-4,489.9	-566.4	348.3	228.2	120.16	2.899	
11,463.8	7,240.0	11,751.8	7,510.0	88.3	88.7	140.81	-4,515.8	-566.3	348.3	227.6	120.79	2.884 SF	

Company:	Synergy Resources	Local Co-ordinate Reference:	Well SRC Gies T-15-22NHZ
Project:	SEC.15-T7N-R65W	TVD Reference:	WELL @ 4851.0ft (Original Well Elev)
Reference Site:	SRC Gies Pad Sec.15-T7N-R65W	MD Reference:	WELL @ 4851.0ft (Original Well Elev)
Site Error:	0.0ft	North Reference:	True
Reference Well:	SRC Gies T-15-22NHZ	Survey Calculation Method:	Minimum Curvature
Well Error:	0.0ft	Output errors are at	2.00 sigma
Reference Wellbore	Wellbore #1	Database:	landmark
Reference Design:	Plan #1 (5-7-14)	Offset TVD Reference:	Offset Datum

Reference Depths are relative to WELL @ 4851.0ft (Original Well Elev) Coordinates are relative to: SRC Gies T-15-22NHZ
 Offset Depths are relative to Offset Datum Coordinate System is US State Plane 1983, Colorado Northern Zone
 Central Meridian is -105.500000 ° Grid Convergence at Surface is: 0.55°



Company:	Synergy Resources	Local Co-ordinate Reference:	Well SRC Gies T-15-22NHZ
Project:	SEC.15-T7N-R65W	TVD Reference:	WELL @ 4851.0ft (Original Well Elev)
Reference Site:	SRC Gies Pad Sec.15-T7N-R65W	MD Reference:	WELL @ 4851.0ft (Original Well Elev)
Site Error:	0.0ft	North Reference:	True
Reference Well:	SRC Gies T-15-22NHZ	Survey Calculation Method:	Minimum Curvature
Well Error:	0.0ft	Output errors are at	2.00 sigma
Reference Wellbore	Wellbore #1	Database:	landmark
Reference Design:	Plan #1 (5-7-14)	Offset TVD Reference:	Offset Datum

Reference Depths are relative to WELL @ 4851.0ft (Original Well Elev) Coordinates are relative to: SRC Gies T-15-22NHZ
 Offset Depths are relative to Offset Datum Coordinate System is US State Plane 1983, Colorado Northern Zone
 Central Meridian is -105.500000 ° Grid Convergence at Surface is: 0.55°

