

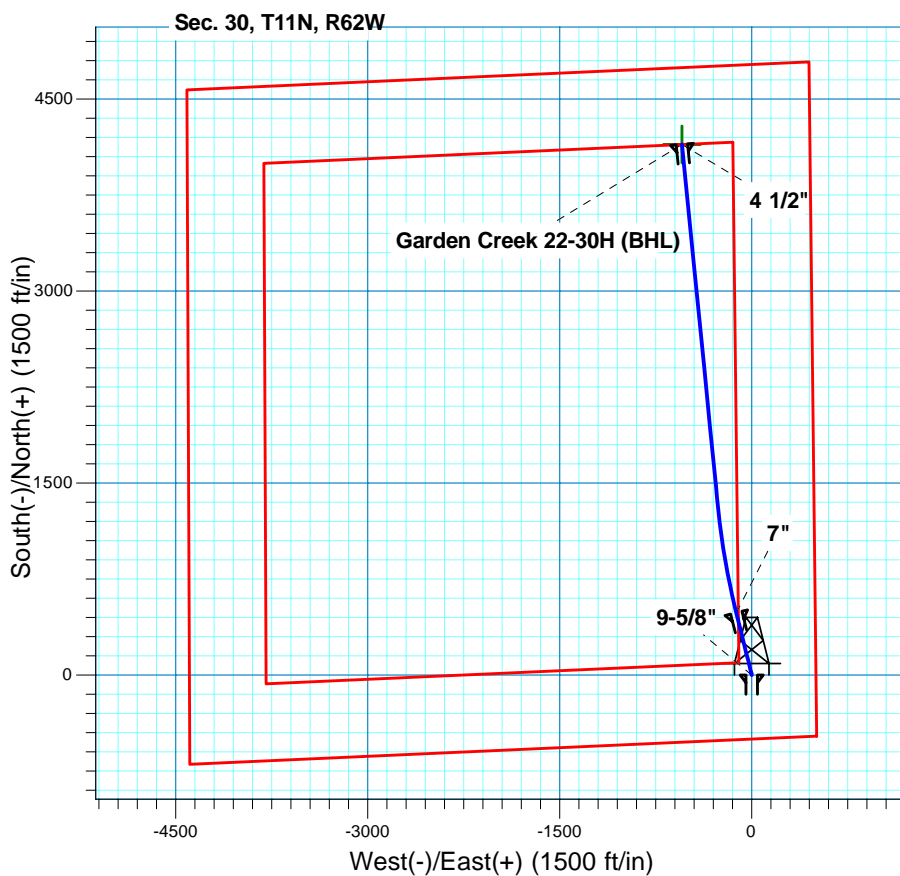
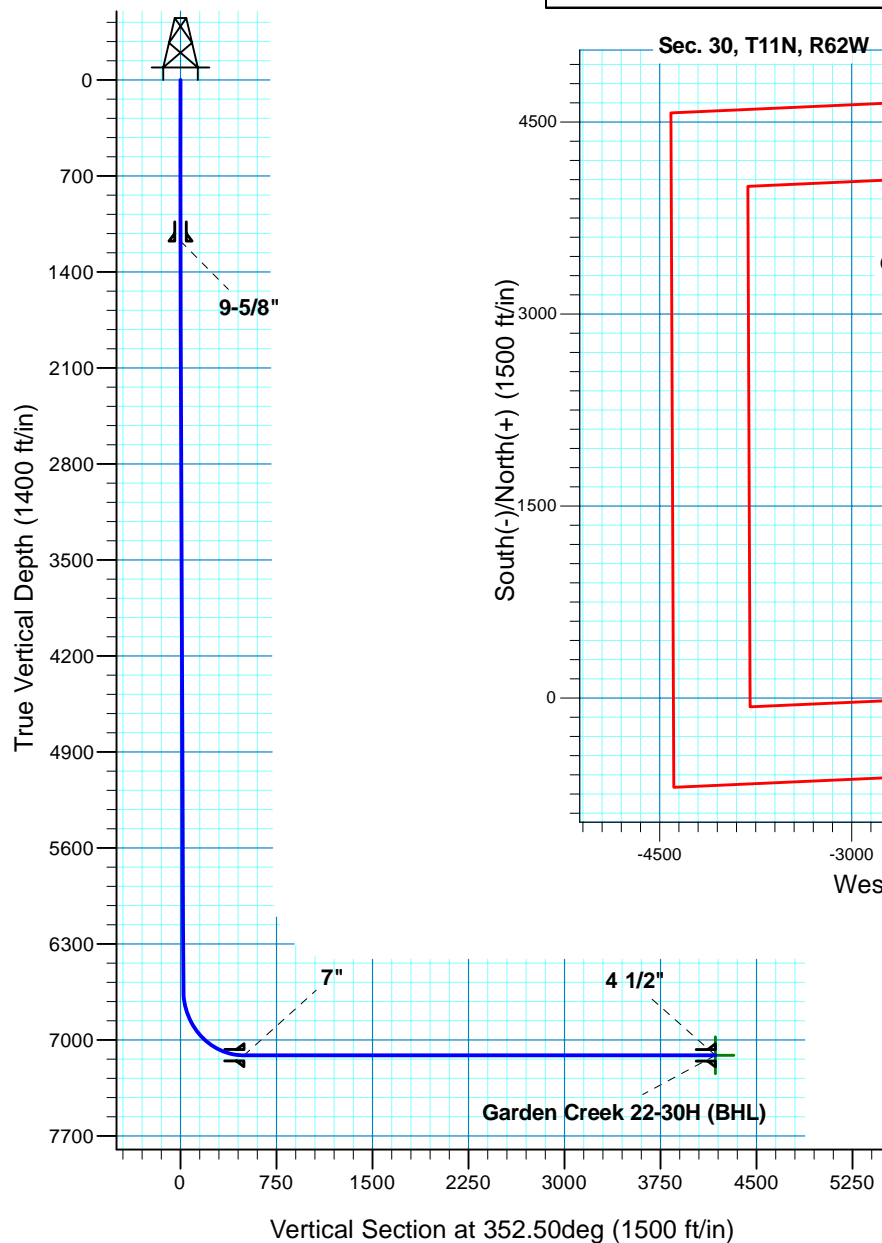
# Garden Creek 22-30H

## Section 30 T11N R62W

### Weld County, CO

#### Surface Location

NAD 1927 (NADCON CONUS) Colorado North 501  
 Ground Elevation: 5172.00 RIG @ 5194.00ft (TBD)  
 Northing Easting Latitude Longitude  
 568498.59 2316602.15 40° 53' 17.941 N 104° 21' 17.932 W



**T M**  
 Azimuths to True North  
 Magnetic North: 8.68°  
 Magnetic Field  
 Strength: 53477.8snT  
 Dip Angle: 67.53°  
 Date: 2/25/2011  
 Model: IGRF200510

Project: DJ - Hereford Ranch  
 Site: Garden Creek 22-30H  
 Well: Garden Creek 22-30H  
 Plan: APD Directional Plan

#### SECTION DETAILS

Sec	MD	Inc	Azi	TVD	+N/-S	+E/-W	DLeg	TFace	VSec	Target
1	0.00	0.00	0.00	0.00	0.00	0.00	0.00	0.00	0.00	
2	1375.00	0.00	0.00	1375.00	0.00	0.00	0.00	0.00	0.00	
3	1387.28	0.25	346.00	1387.28	0.03	-0.01	2.00	346.00	0.03	
4	6637.63	0.25	346.00	6637.58	21.87	-5.45	0.00	0.00	22.39	
5	7385.58	90.00	346.00	7113.00	485.15	-120.96	12.00	0.00	496.78	Garden Creek 22-30H (ICP)
6	8218.02	90.00	354.32	7113.00	1304.62	-263.07	1.00	90.00	1327.79	Garden Creek 22-30H (BHL)
7	11070.72	90.00	354.32	7113.00	4143.33	-545.19	0.00	0.00	4179.05	Garden Creek 22-30H (BHL)

#### TARGET DETAILS

Name	TVD	+N/-S	+E/-W	Northing	Easting	Latitude	Longitude	Shape
Garden Creek 22-30H (BHL)	7113.00	4143.33	-545.19	572634.54	2316003.51	40° 53' 58.880 N	104° 21' 25.031 W	Point