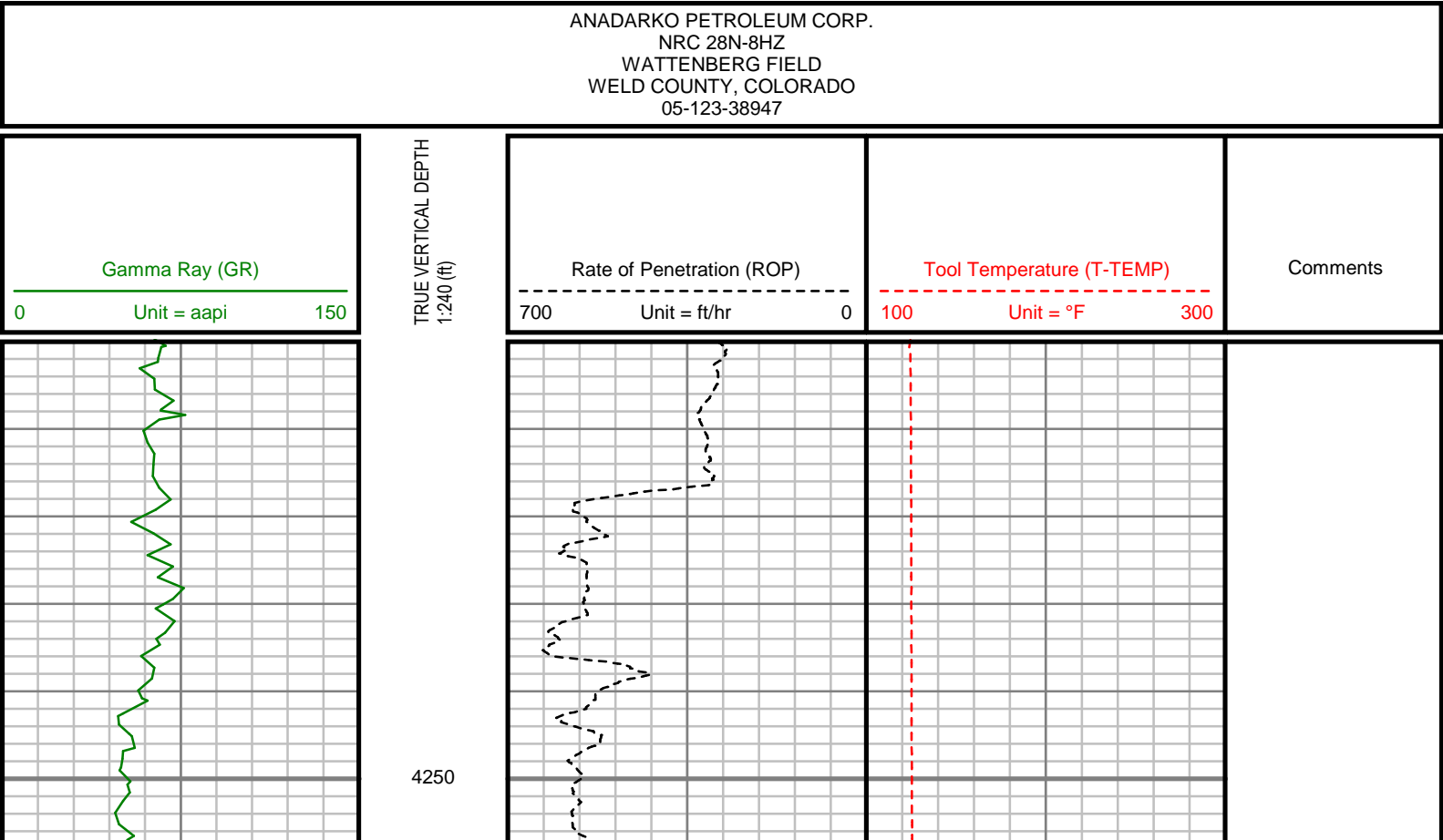
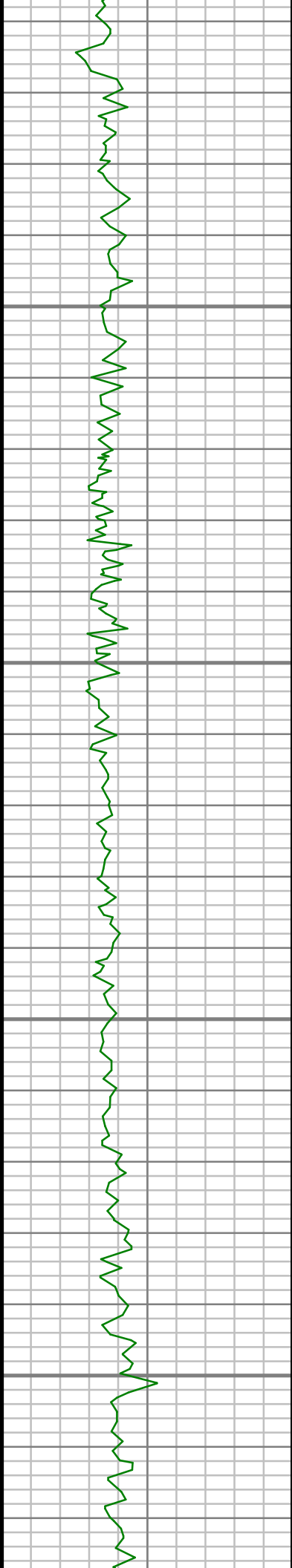


Remarks
ANADARKO PETROLEUM CORP. PRODUCTION AFE#
SCIENTIFIC DRILLING INTERNATIONAL JOB# 134262
ALL REFERENCES IN THE DEPTH TRACK ARE AT BIT DEPTH.
ALL DATA IS MEMORY DATA UNLESS STATED OTHERWISE.
FLAT AVERAGE FILTER OF 1.00 FT APPLIED TO RATE OF PENETRATION CURVE
RUN # 1: MWD / GAMMA RAY LOGGING RUN
SENSORS S/N: PULSER = 128-287 / CONT = 590 / MWD EYE =386 / GAMMA RAY =1031
BIT TO SENSOR OFFSETS: SURVEY = 62.77 FT. / GAMMA RAY = 53.52 FT.
RUN # 2: MWD / GAMMA RAY LOGGING RUN
SENSORS S/N: PULSER = 078-070 / CONT = 819 / MWD EYE = 298 / GAMMA RAY =1101
BIT TO SENSOR OFFSETS: SURVEY = 57.91 FT. / GAMMA RAY = 48.66 FT.
SURVEY WELL NOTES:
SURVEYS FROM 0.0 FT. TO 1258 FT. WERE ACQUIRED BY MS GYRO MWD.
SURVEYS FROM 1258 FT. TO 12722 FT. WERE ACQUIRED BY SCIENTIFIC DRILLING INTERNATIONAL MWD.
MNEMONICS LIST:
GR = GAMMA RAY
ROP = RATE OF PENETRATION
T-TEMP = TOOL TEMPERATURE

All interpretations are opinions based on inferences from electrical or other measurements and we cannot, and do not guarantee the accuracy or correctness of any interpretations, and we shall not, except in the case of gross or willful negligence on our part, be liable or responsible for any loss, costs, damages or expenses incurred or sustained by anyone resulting from any interpretation made by any of our officers, agents or employees. These interpretations are also subject to our general terms and conditions as set out in our current price schedule.



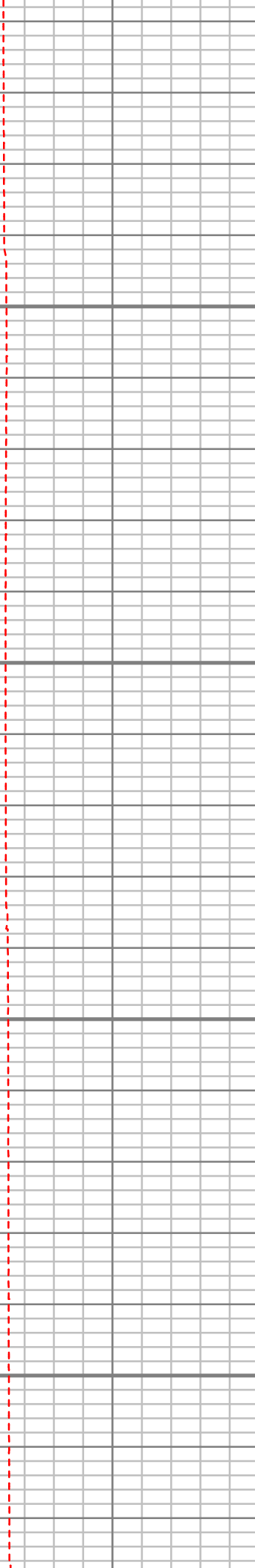
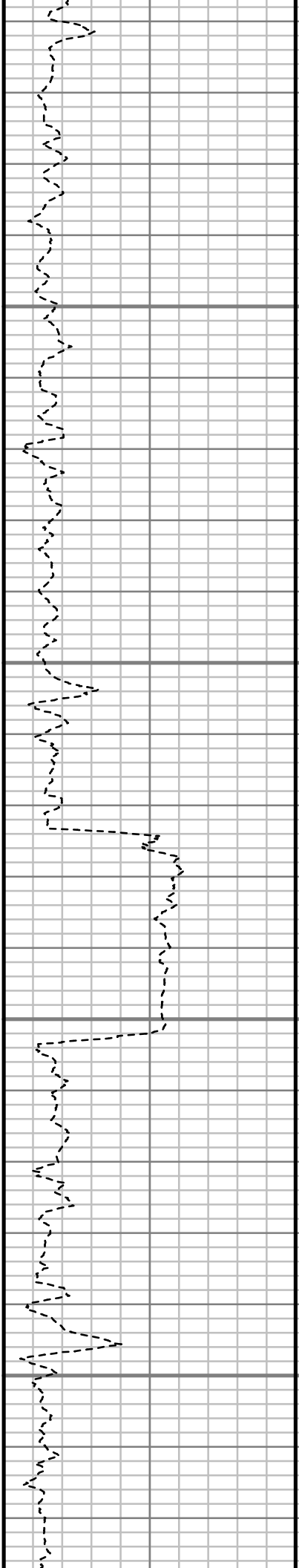


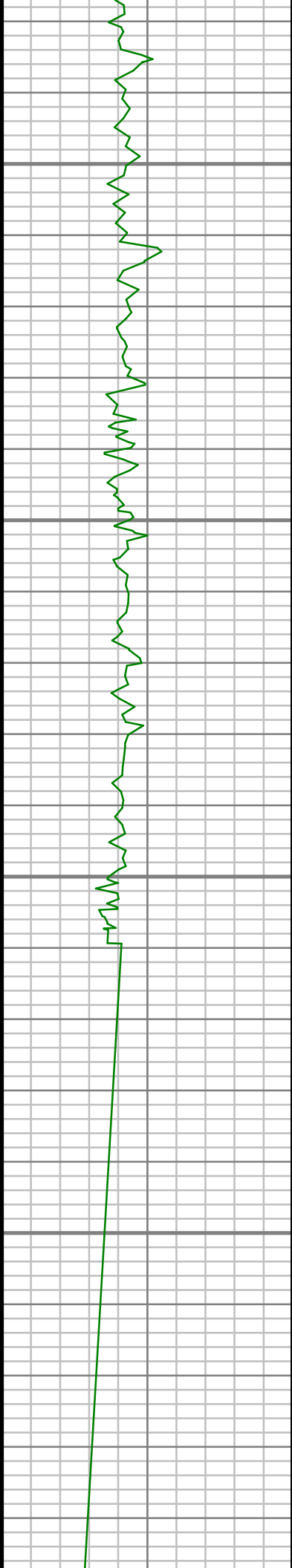
4300

4350

4400

4450



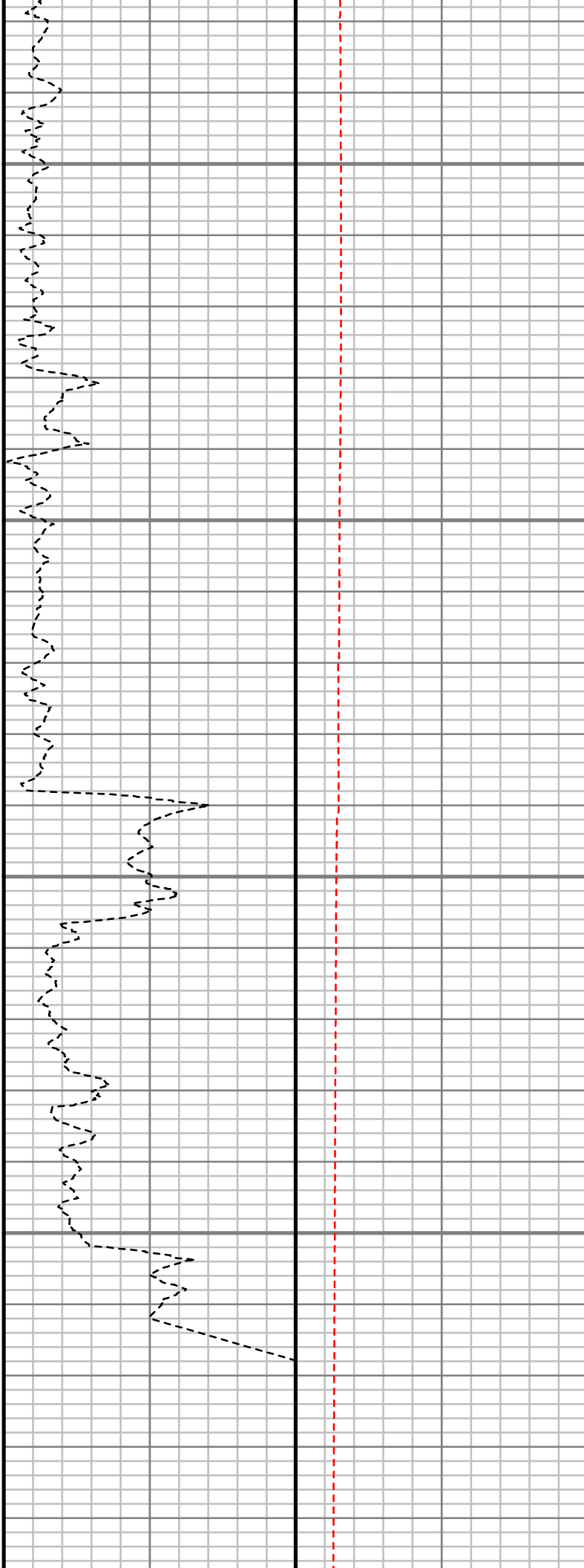


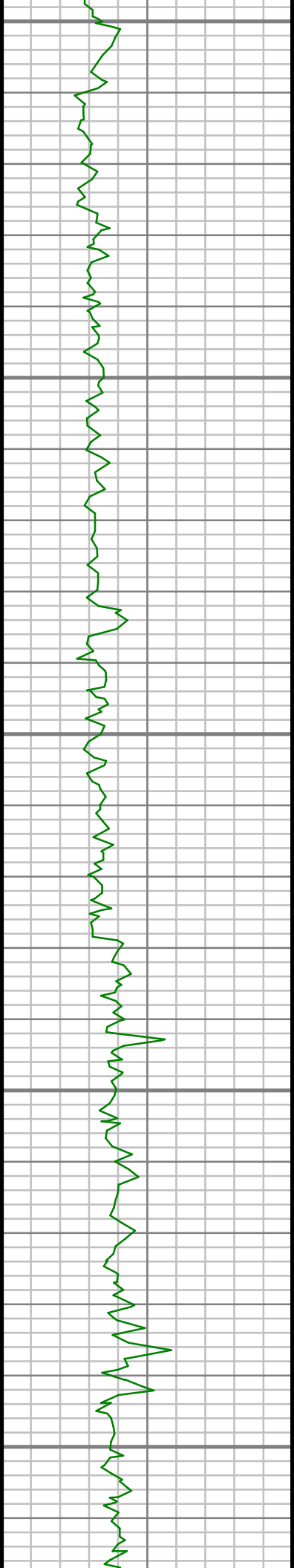
4500

4550

4600

4650





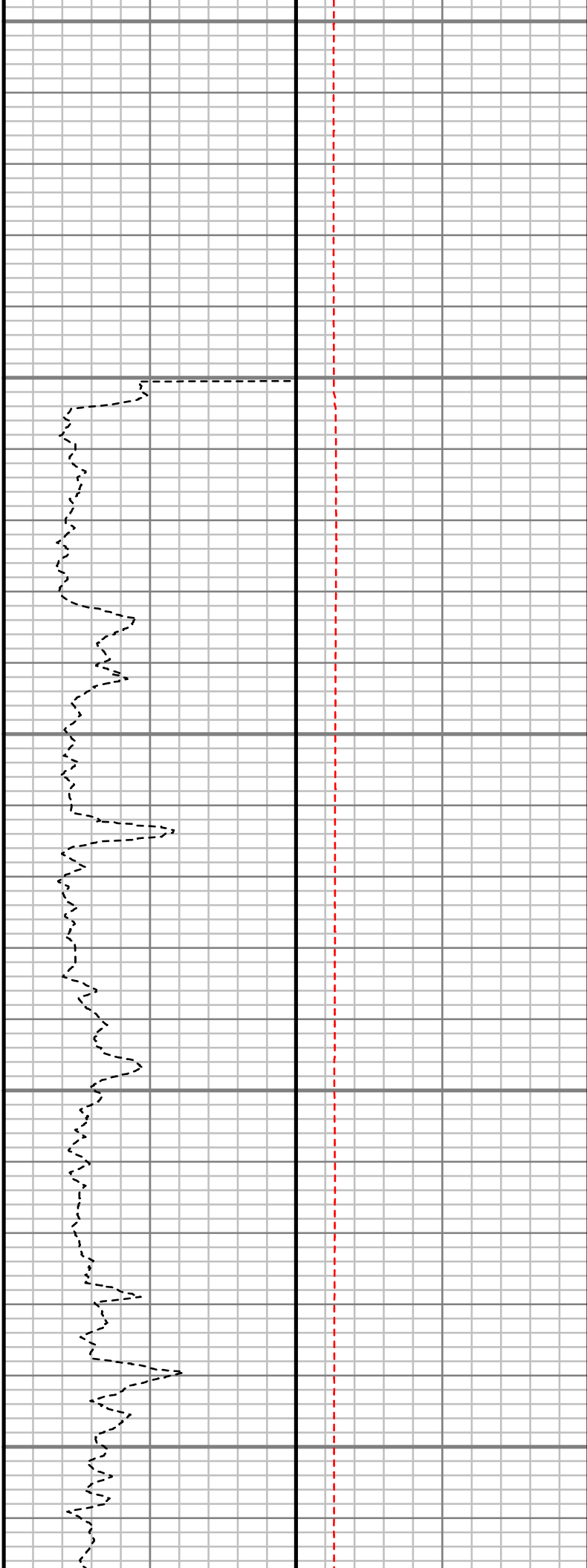
4700

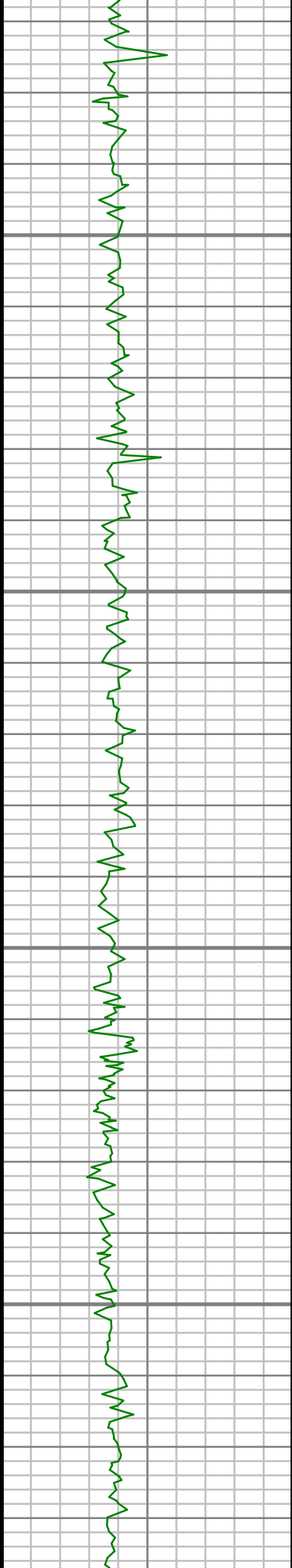
4750

4800

4850

4900



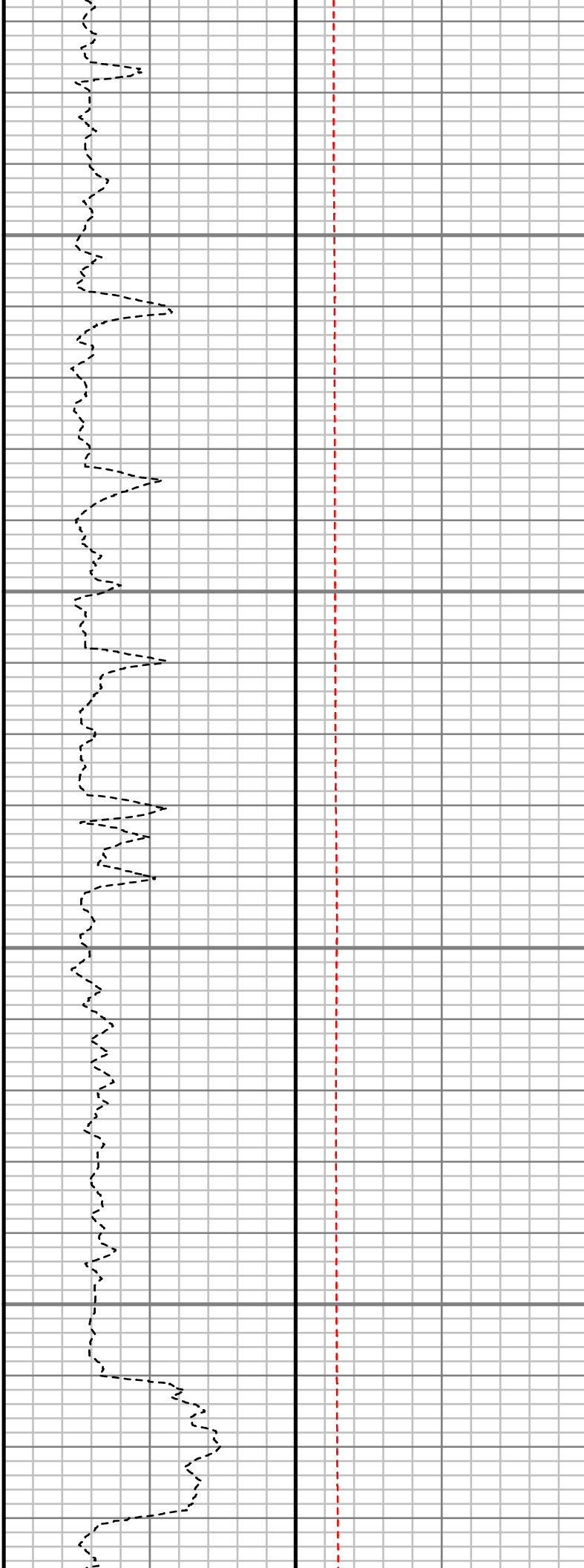


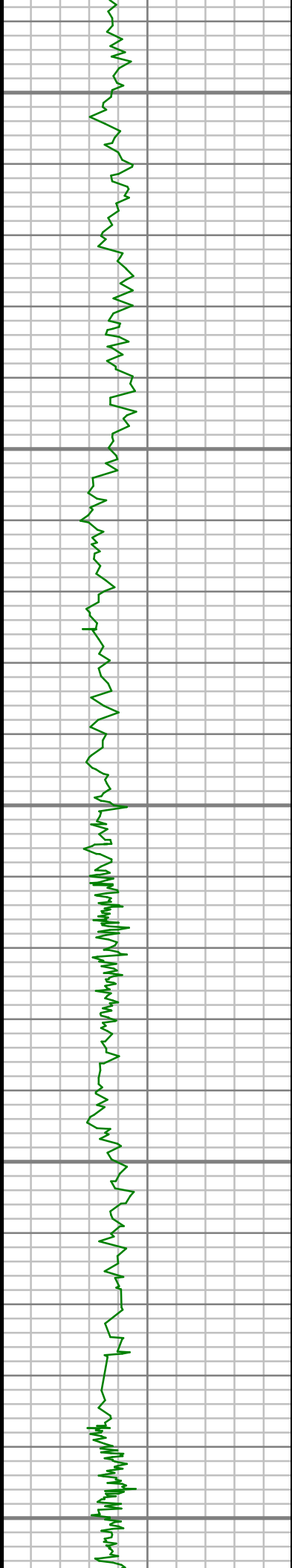
4950

5000

5050

5100





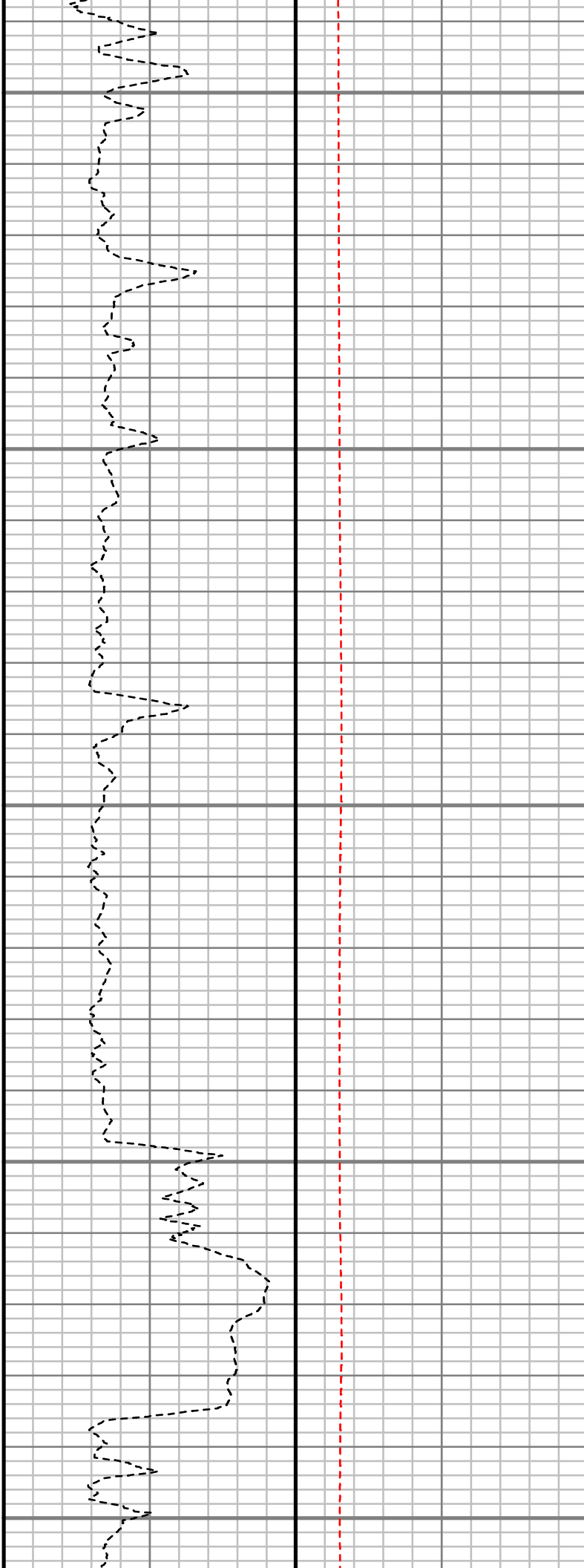
5150

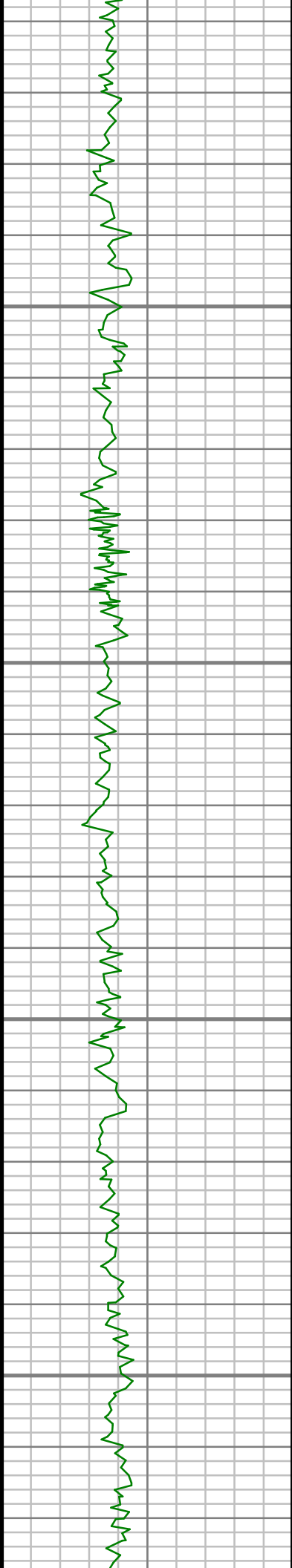
5200

5250

5300

5350



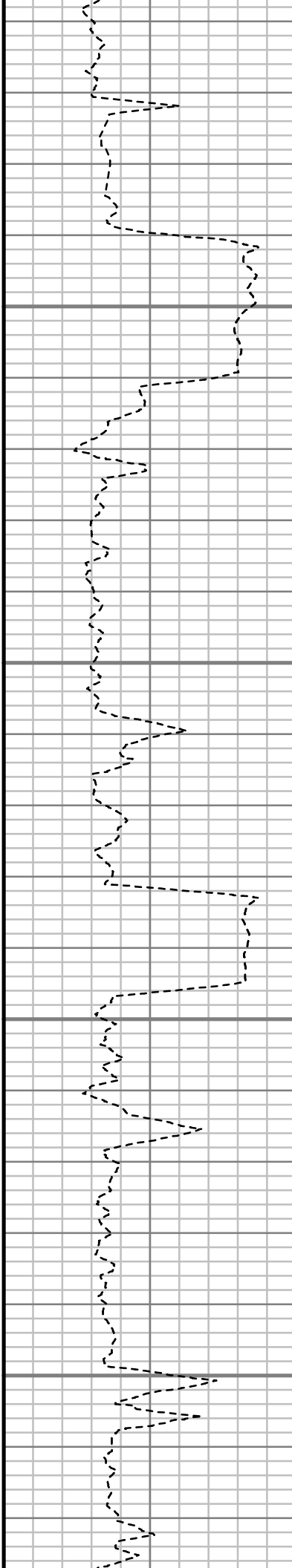


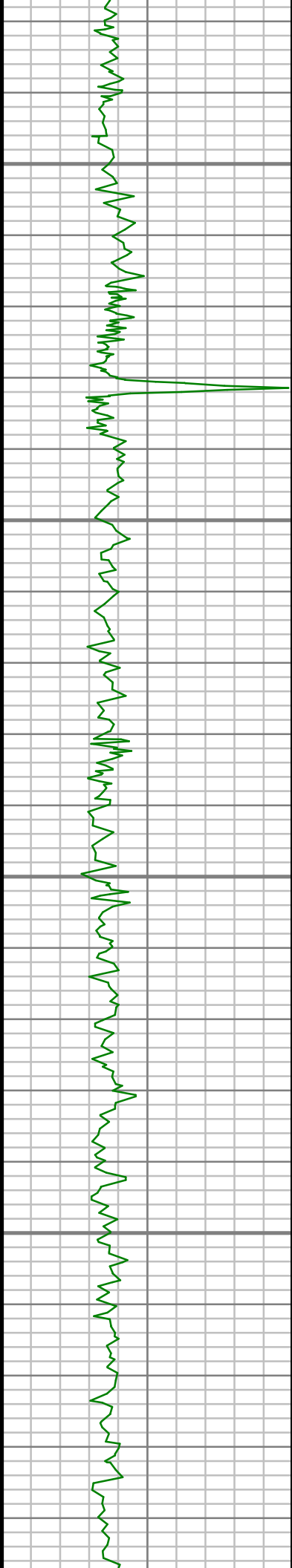
5400

5450

5500

5550



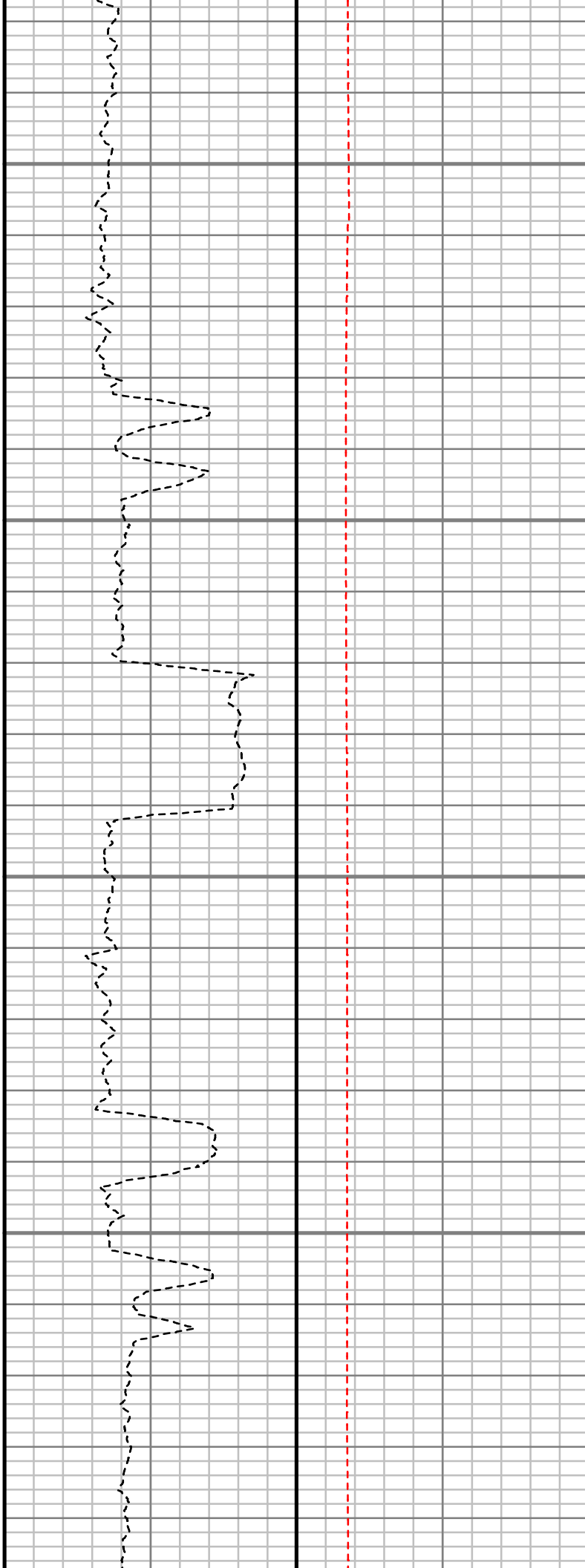


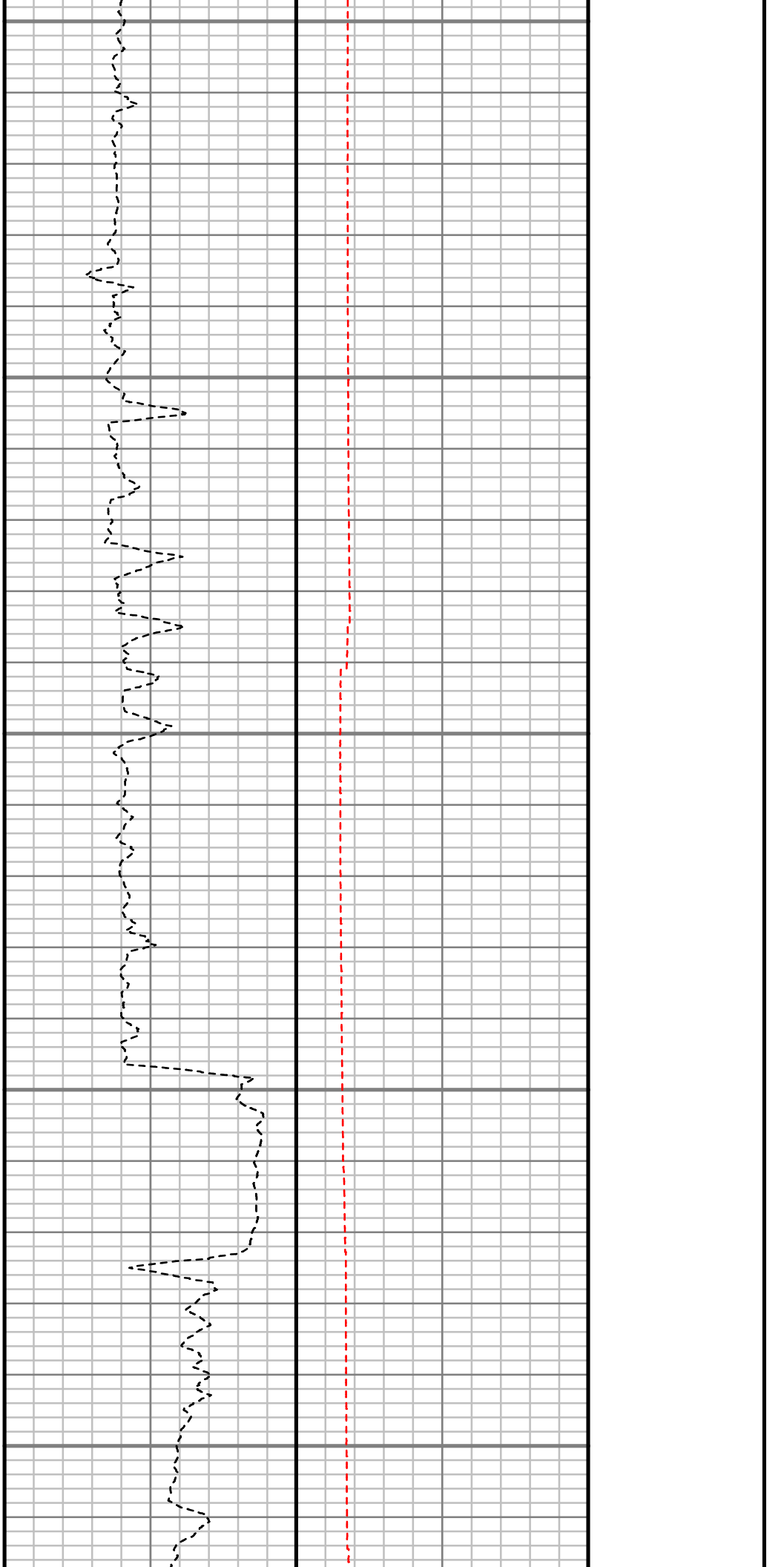
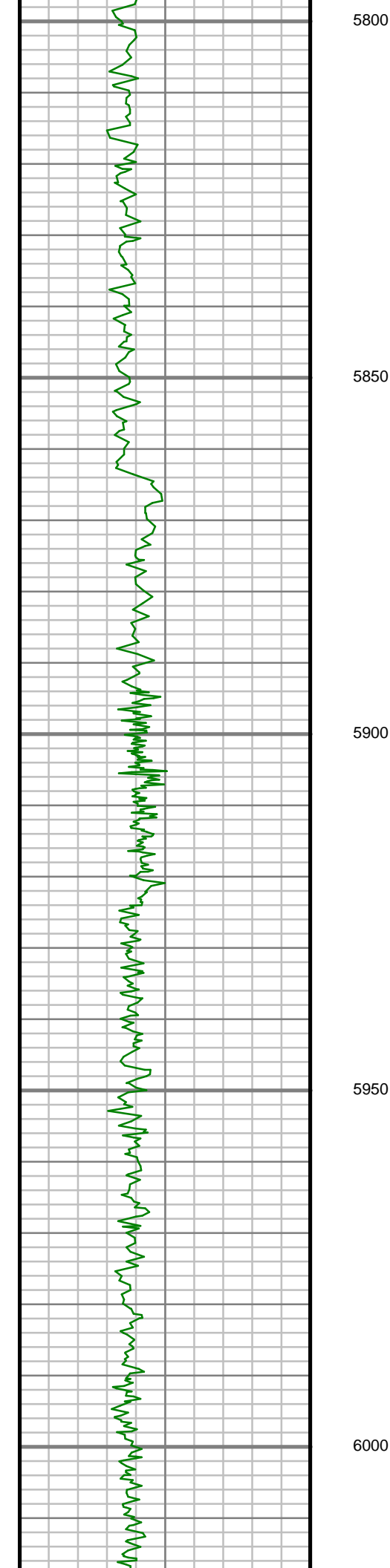
5600

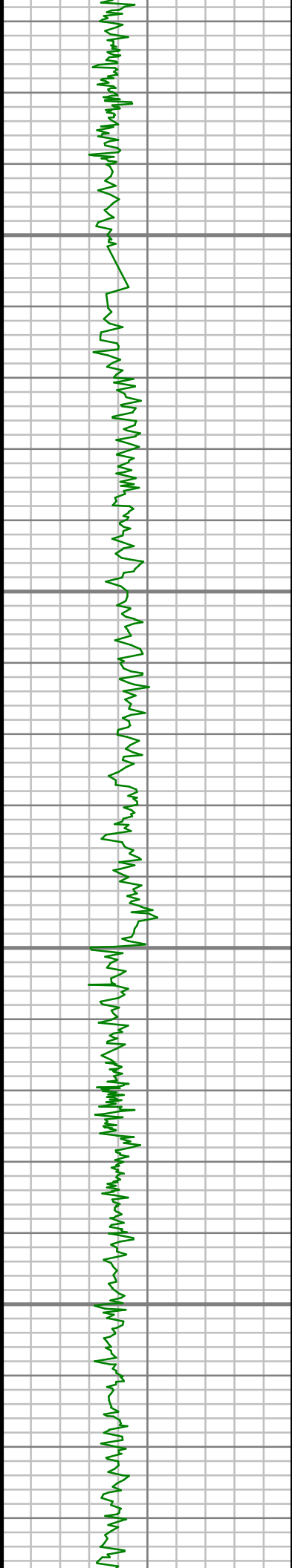
5650

5700

5750





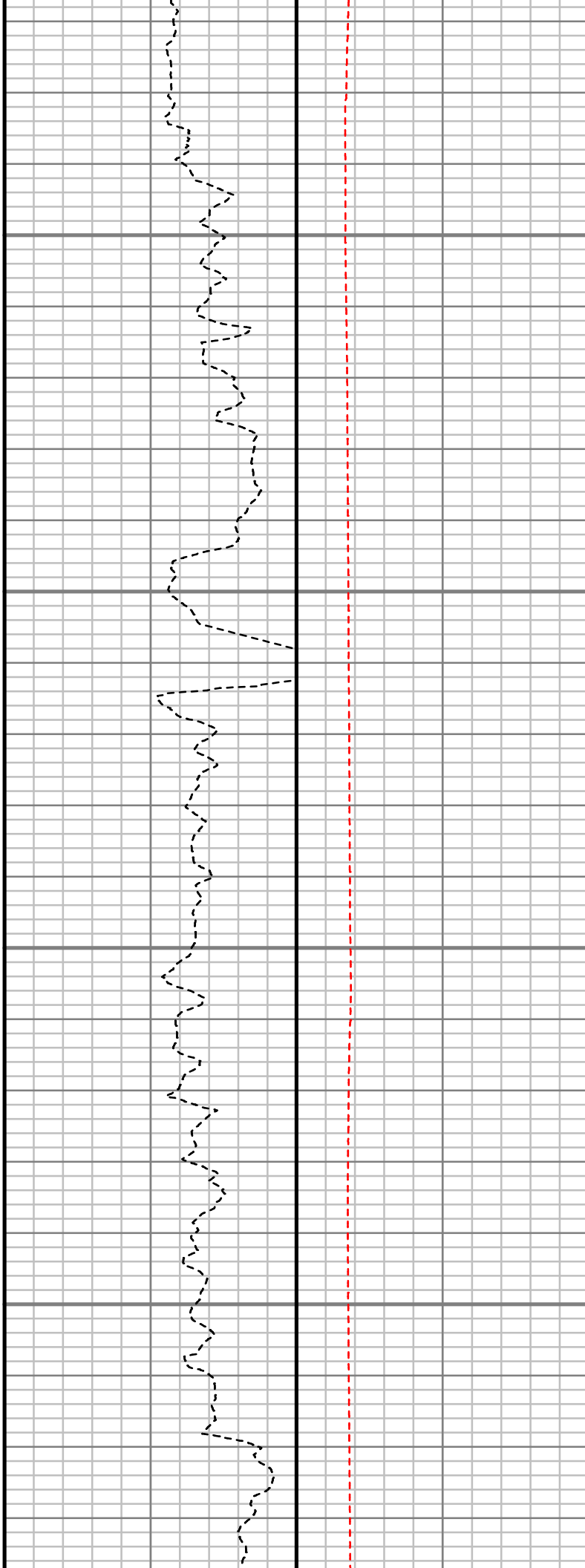


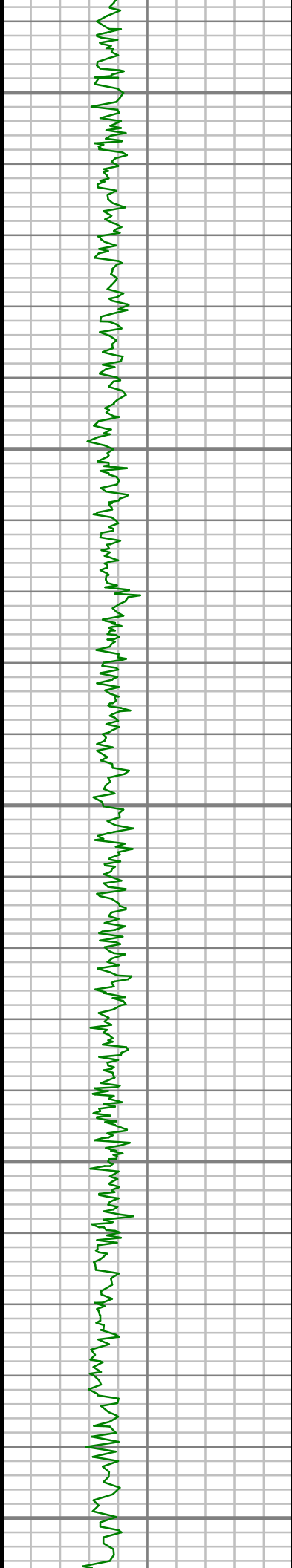
6050

6100

6150

6200





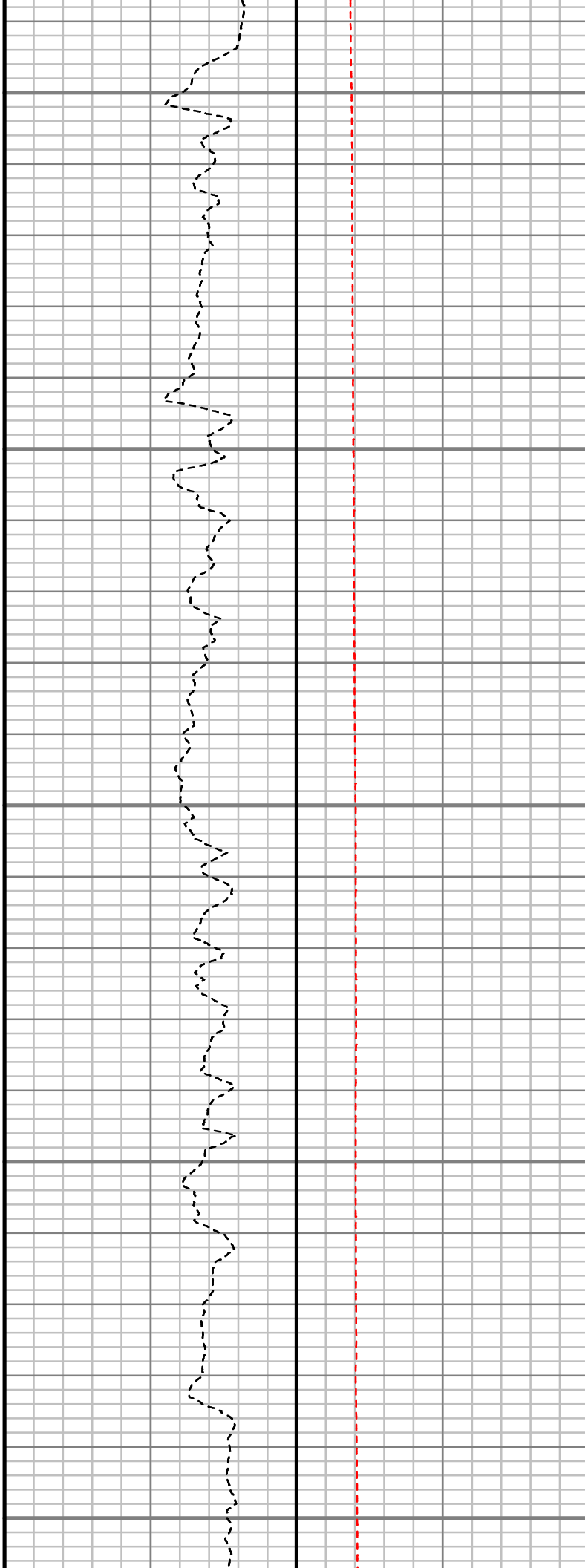
6250

6300

6350

6400

6450



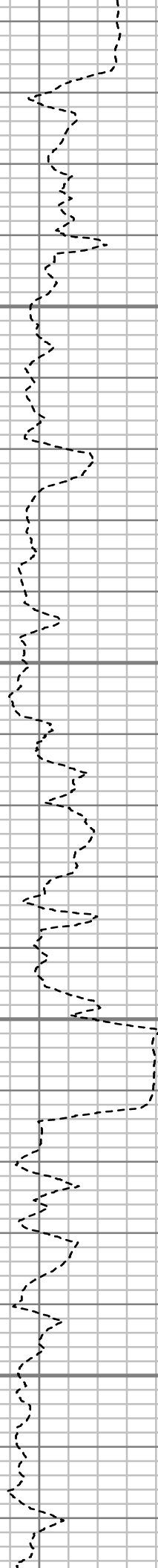


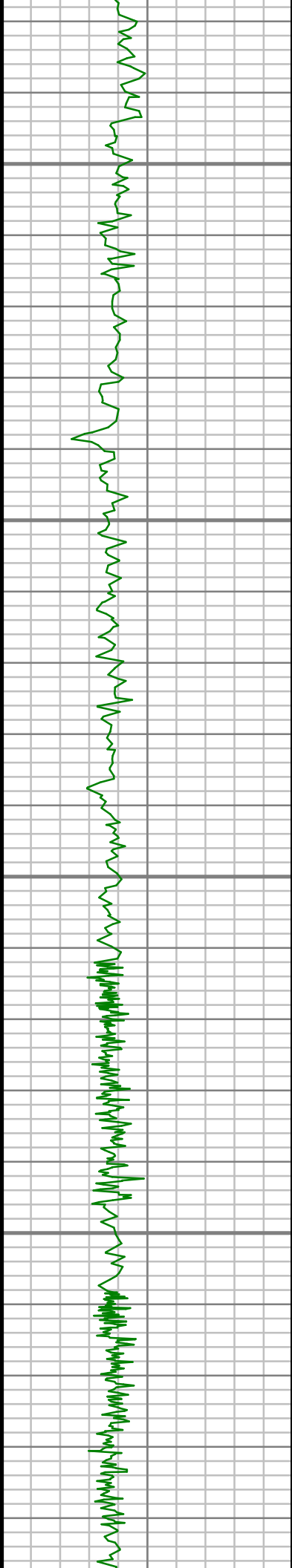
6500

6550

6600

6650



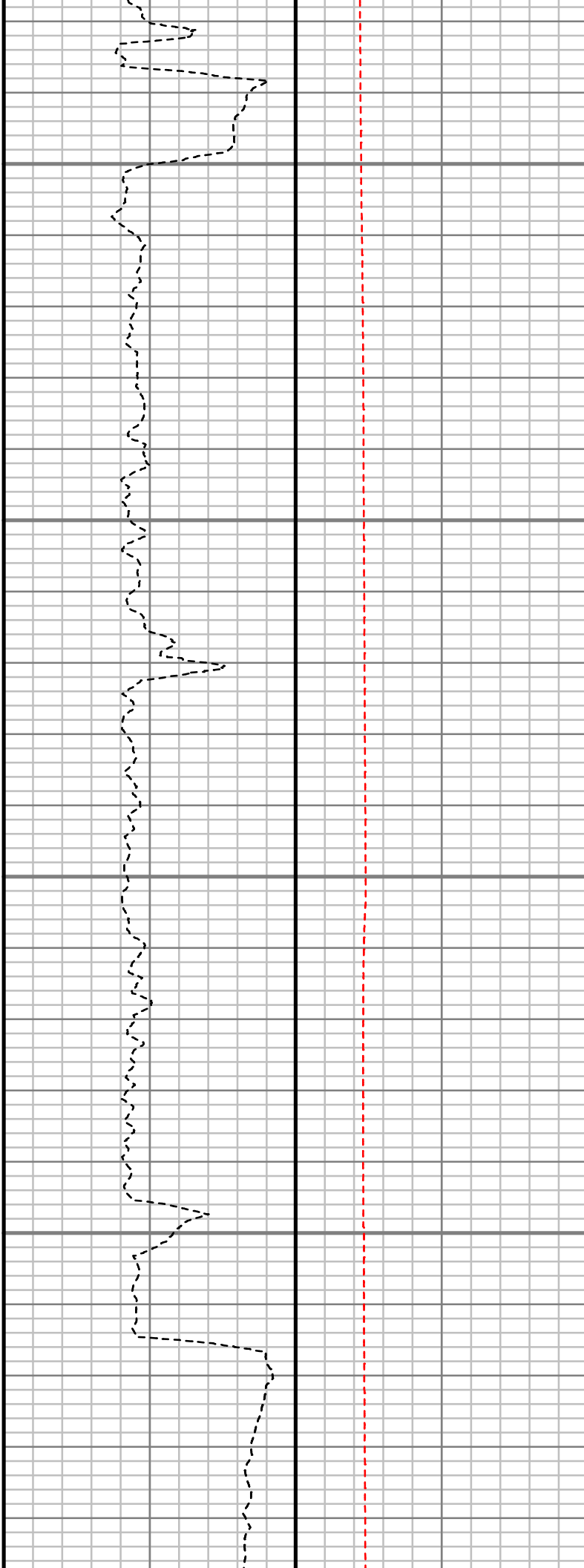


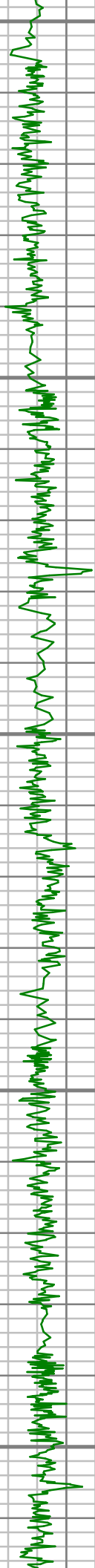
6700

6750

6800

6850





6900

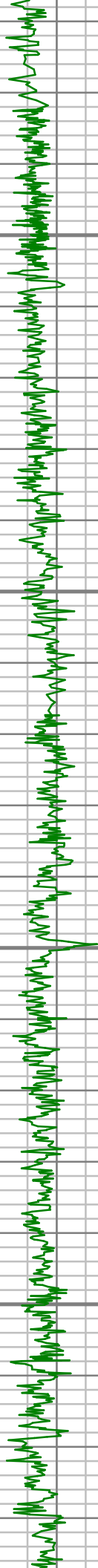
6950

7000

7050

7100



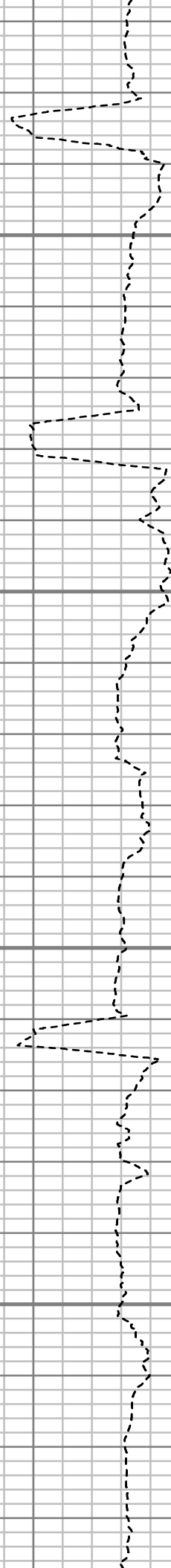


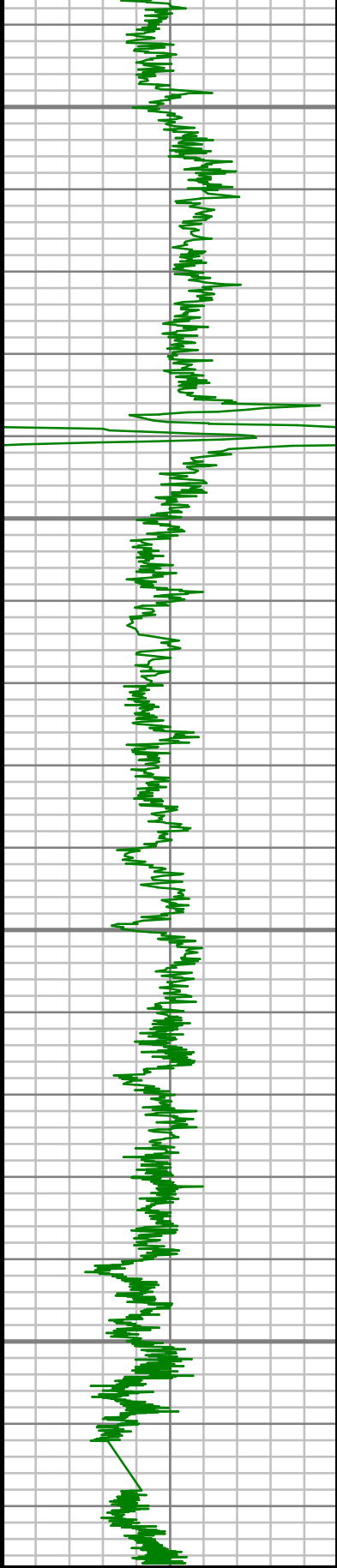
7150

7200

7250

7300





Gamma Ray (GR)
0 Unit = aapi 150

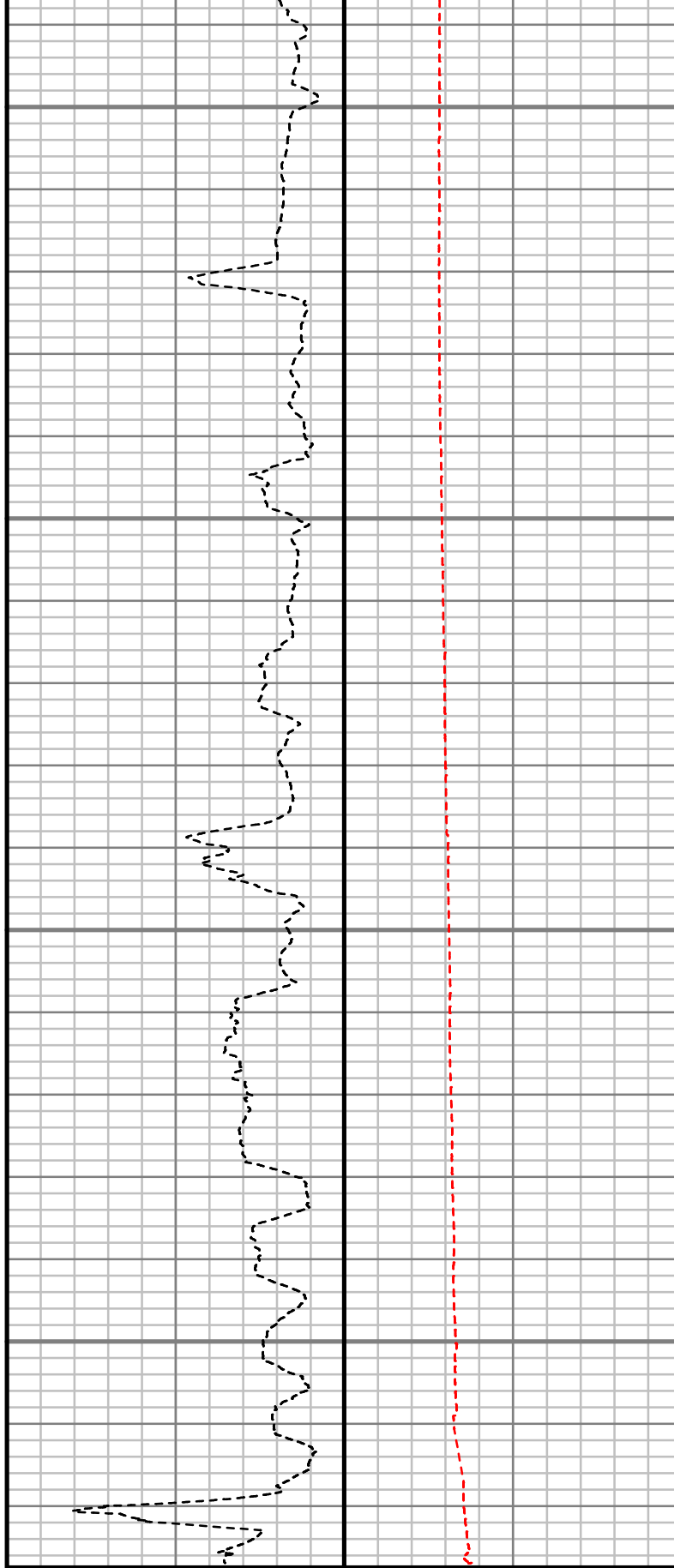
7350

7400

7450

7500

TRUE VERTICAL DEPTH
1:240 (ft)



Rate of Penetration (ROP)
700 Unit = ft/hr 0

Tool Temperature (T-TEMP)
100 Unit = °F 300

Comments

Customer Name:	ANADARKO PETROLEUM CORP.						
Site Name:	NRC 14-8HZ PAD						
Well Name:	NRC 28N-8HZ						
Survey:	NRC 28N-8HZ						
Survey Date:	4/2/2014						
Magnetic Declination:	8.53 deg						
North Reference:	True North						
Calculation Method:	Minimum Curvature						
Section (VS) Ref:	0.00N (ft), 0.00E (ft), 0.00Azim (deg)						
MD ft	Inc deg	Azim deg	TVD ft	VS ft	+N/-S ft	+E/-W ft	DLS °/100ft
0.00	0.00	0.00	0.00	0.00	0.00	0.00	Invalid
100.00	0.31	171.35	100.00	-0.27	-0.27	0.04	0.31
200.00	0.56	35.26	200.00	-0.14	-0.14	0.36	0.81
300.00	0.20	221.67	300.00	0.13	0.13	0.53	0.76
400.00	0.50	49.54	400.00	0.29	0.29	0.75	0.70
500.00	0.44	189.59	499.99	0.19	0.19	1.01	0.88
600.00	0.39	349.65	599.99	0.15	0.15	0.89	0.82
700.00	0.56	153.93	699.99	0.04	0.04	1.04	0.94
800.00	0.35	2.79	799.99	-0.09	-0.09	1.27	0.88

MD ft	Inc deg	Azim deg	TVD ft	VS ft	+N/-S ft	+E/-W ft	DLS °/100ft
900.00	0.40	190.56	899.99	-0.13	-0.13	1.22	0.75
1000.00	0.50	43.00	999.99	-0.15	-0.15	1.46	0.86
1100.00	0.47	306.74	1099.99	0.41	0.41	1.43	0.72
1125.00	0.52	350.64	1124.99	0.58	0.58	1.32	1.49
1277.00	0.37	284.96	1276.98	1.39	1.39	0.73	0.33
1369.00	2.31	171.79	1368.96	-0.36	-0.36	0.71	2.69
1564.00	8.67	158.33	1562.97	-17.93	-17.93	6.70	3.31
1656.00	10.37	163.97	1653.70	-32.34	-32.34	11.55	2.10
1747.00	10.43	168.56	1743.21	-48.28	-48.28	15.45	0.91
1839.00	10.68	170.80	1833.65	-64.86	-64.86	18.46	0.53
1930.00	9.36	167.87	1923.26	-80.42	-80.42	21.37	1.56
2023.00	7.91	165.99	2015.21	-94.02	-94.02	24.50	1.59
2114.00	8.00	176.73	2105.33	-106.41	-106.41	26.38	1.63
2206.00	9.71	180.69	2196.24	-120.56	-120.56	26.65	1.97
2298.00	11.29	188.83	2286.70	-137.22	-137.22	25.18	2.35
2389.00	11.30	184.86	2375.94	-154.91	-154.91	23.06	0.85
2480.00	12.63	181.15	2464.96	-173.74	-173.74	22.10	1.69
2572.00	12.38	176.30	2554.78	-193.65	-193.65	22.54	1.18
2664.00	11.61	174.80	2644.77	-212.71	-212.71	24.01	0.90
2756.00	10.64	171.22	2735.04	-230.33	-230.33	26.15	1.30

MD ft	Inc deg	Azim deg	TVD ft	VS ft	+N/-S ft	+E/-W ft	DLS °/100ft
2848.00	11.55	175.97	2825.32	-247.92	-247.92	28.09	1.40
2940.00	10.83	176.04	2915.57	-265.73	-265.73	29.34	0.79
3032.00	12.03	171.26	3005.74	-283.83	-283.83	31.39	1.66
3124.00	12.56	164.74	3095.64	-302.96	-302.96	35.48	1.61
3215.00	12.55	162.19	3184.46	-321.92	-321.92	41.11	0.61
3307.00	12.20	163.55	3274.32	-340.76	-340.76	46.92	0.49
3399.00	12.18	163.45	3364.25	-359.39	-359.39	52.44	0.04
3493.00	12.74	171.86	3456.04	-379.15	-379.15	56.73	2.02
3587.00	12.92	170.56	3547.70	-399.77	-399.77	59.92	0.36
3681.00	12.40	170.24	3639.41	-420.09	-420.09	63.36	0.55
3870.00	10.89	170.89	3824.51	-457.72	-457.72	69.62	0.80
3964.00	9.74	169.49	3916.99	-474.30	-474.30	72.48	1.26
4058.00	10.32	171.62	4009.56	-490.45	-490.45	75.16	0.73
4153.00	9.25	171.62	4103.18	-506.42	-506.42	77.51	1.12
4247.00	10.70	178.63	4195.76	-522.62	-522.62	78.82	2.01
4341.00	11.47	184.22	4288.00	-540.67	-540.67	78.34	1.41
4436.00	11.75	187.14	4381.06	-559.69	-559.69	76.44	0.68
4530.00	12.38	186.51	4472.98	-579.19	-579.19	74.11	0.68
4624.00	9.28	185.12	4565.30	-596.76	-596.76	72.29	3.30

MD ft	Inc deg	Azim deg	TVD ft	VS ft	+N/-S ft	+E/-W ft	DLS °/100ft
4813.00	13.39	171.47	4750.60	-633.61	-633.61	74.17	2.58
4907.00	13.91	168.75	4841.95	-655.46	-655.46	77.99	0.88
5002.00	12.37	168.81	4934.46	-676.64	-676.64	82.20	1.62
5096.00	10.72	167.14	5026.55	-695.04	-695.04	86.10	1.79
5190.00	10.55	166.06	5118.94	-711.91	-711.91	90.12	0.27
5285.00	9.87	168.91	5212.44	-728.35	-728.35	93.78	0.90
5474.00	10.23	182.79	5398.56	-761.01	-761.01	96.07	1.29
5568.00	11.51	179.36	5490.87	-778.73	-778.73	95.77	1.53
5662.00	10.36	176.16	5583.17	-796.54	-796.54	96.44	1.38
5757.00	10.45	179.08	5676.61	-813.68	-813.68	97.15	0.56
5946.00	7.76	175.78	5863.21	-843.54	-843.54	98.37	1.45
6040.00	8.53	172.45	5956.26	-856.77	-856.77	99.75	0.96
6134.00	8.38	169.08	6049.24	-870.41	-870.41	101.96	0.55
6228.00	9.15	161.44	6142.14	-884.22	-884.22	105.64	1.48
6322.00	9.42	160.87	6234.91	-898.58	-898.58	110.54	0.31
6417.00	7.80	157.51	6328.84	-911.88	-911.88	115.55	1.79
6511.00	6.47	152.49	6422.11	-922.47	-922.47	120.44	1.56
6606.00	5.00	153.17	6516.63	-930.91	-930.91	124.78	1.55
6700.00	2.71	164.56	6610.42	-936.70	-936.70	127.21	2.55
6795.00	1.47	93.47	6705.36	-938.94	-938.94	129.03	2.77

MD ft	Inc deg	Azim deg	TVD ft	VS ft	+N/-S ft	+E/-W ft	DLS °/100ft
6889.00	1.02	103.94	6799.34	-939.22	-939.22	131.05	0.54
6936.00	0.98	83.29	6846.33	-939.27	-939.27	131.86	0.77
6983.00	4.00	9.62	6893.29	-937.61	-937.61	132.53	8.16
7030.00	9.00	4.30	6939.98	-932.33	-932.33	133.08	10.72
7078.00	12.61	6.68	6987.12	-923.38	-923.38	133.97	7.57
7125.00	16.80	9.46	7032.57	-911.57	-911.57	135.68	9.04
7172.00	19.28	8.21	7077.25	-897.19	-897.19	137.91	5.34
7219.00	21.11	3.89	7121.36	-881.06	-881.06	139.59	5.02
7266.00	24.83	4.90	7164.63	-862.78	-862.78	141.01	7.95
7313.00	26.77	4.60	7206.94	-842.40	-842.40	142.70	4.14
7361.00	29.62	1.94	7249.25	-819.76	-819.76	143.97	6.49
7408.00	35.06	359.04	7288.94	-794.64	-794.64	144.14	12.03
7455.00	40.34	353.41	7326.13	-766.00	-766.00	142.16	13.41
7502.00	47.85	353.61	7359.86	-733.52	-733.52	138.47	15.97
7549.00	55.08	354.65	7389.12	-696.97	-696.97	134.73	15.49
7596.00	60.04	355.03	7414.32	-657.48	-657.48	131.17	10.56
7644.00	63.53	359.30	7437.02	-615.26	-615.26	129.11	10.70
7691.00	68.33	359.19	7456.19	-572.36	-572.36	128.54	10.22
7738.00	70.01	0.18	7472.90	-528.44	-528.44	128.30	4.07

MD ft	Inc deg	Azim deg	TVD ft	VS ft	+N/-S ft	+E/-W ft	DLS °/100ft
7785.00	73.65	0.91	7487.56	-483.79	-483.79	128.73	7.89
7833.00	77.50	2.00	7499.51	-437.33	-437.33	129.91	8.31
7880.00	80.21	0.51	7508.60	-391.23	-391.23	130.92	6.55
8052.00	88.66	357.04	7525.27	-220.26	-220.26	127.23	5.31
8241.00	90.47	359.19	7526.71	-31.39	-31.39	121.01	1.49
8430.00	91.68	2.76	7523.17	157.51	157.51	124.23	1.99
8619.00	91.95	4.39	7517.18	346.05	346.05	136.01	0.87
8713.00	91.75	2.79	7514.15	439.81	439.81	141.89	1.71
8808.00	90.40	2.14	7512.37	534.70	534.70	145.97	1.57
8902.00	88.99	2.14	7512.86	628.63	628.63	149.49	1.50
9090.00	90.03	1.75	7514.46	816.52	816.52	155.87	0.59
9185.00	91.01	0.60	7513.59	911.49	911.49	157.81	1.59
9279.00	92.02	0.13	7511.12	1005.45	1005.45	158.40	1.18
9468.00	91.24	358.52	7505.74	1194.36	1194.36	156.19	0.94
9563.00	90.30	358.21	7504.46	1289.31	1289.31	153.48	1.04
9657.00	88.52	358.49	7505.43	1383.26	1383.26	150.78	1.92
9751.00	87.92	358.16	7508.35	1477.17	1477.17	148.03	0.73
9846.00	89.02	358.31	7510.88	1572.09	1572.09	145.11	1.18
10129.00	87.55	358.10	7519.35	1854.82	1854.82	136.23	0.53
10224.00	89.13	357.64	7522.11	1949.71	1949.71	132.69	1.73

MD	Inc	Azim	TVD	VS	+N/-S	+E/-W	DLS
ft	deg	deg	ft	ft	ft	ft	%/100ft
10318.00	91.18	356.84	7521.86	2043.59	2043.59	128.16	2.34
10413.00	91.14	357.90	7519.94	2138.47	2138.47	123.81	1.12
10507.00	89.87	358.04	7519.11	2232.41	2232.41	120.48	1.37
10696.00	90.27	359.54	7518.89	2421.36	2421.36	116.50	0.82
10790.00	91.41	359.46	7517.51	2515.35	2515.35	115.69	1.22
10884.00	90.91	359.84	7515.61	2609.32	2609.32	115.11	0.67
11073.00	89.36	359.62	7515.16	2798.32	2798.32	114.23	0.83
11167.00	88.19	359.14	7517.18	2892.29	2892.29	113.22	1.35
11356.00	90.97	359.31	7518.56	3081.25	3081.25	110.67	1.48
11450.00	91.68	359.17	7516.38	3175.21	3175.21	109.43	0.76
11545.00	89.87	359.89	7515.10	3270.20	3270.20	108.65	2.05
11734.00	90.57	0.74	7514.38	3459.19	3459.19	109.70	0.59
11828.00	88.59	1.62	7515.07	3553.16	3553.16	111.64	2.31
11922.00	87.41	2.73	7518.35	3647.03	3647.03	115.21	1.72
12111.00	87.98	1.09	7525.95	3835.77	3835.77	121.50	0.92
12206.00	90.37	0.45	7527.31	3930.74	3930.74	122.77	2.60
12300.00	90.07	359.79	7526.95	4024.74	4024.74	122.97	0.77
12488.00	91.11	359.60	7525.02	4212.73	4212.73	121.98	0.56
12583.00	91.08	358.93	7523.21	4307.70	4307.70	120.76	0.71

MD ft	Inc deg	Azim deg	TVD ft	VS ft	+N/-S ft	+E/-W ft	DLS °/100ft

5" = 100' FEET TVD