

**ANADARKO PETROLEUM CORP - EBUS  
DO NOT MAIL - PO BOX 4995  
THE WOODLANDS, Texas**

Scott 27N-32HZ

**Majors 29**

## **Post Job Summary** **Cement Surface Casing**

Date Prepared: 3/4/2014  
Version: 1

Service Supervisor: ESKELSON, GARY

Submitted by: TRIER, DEREK

**HALLIBURTON**

# HALLIBURTON

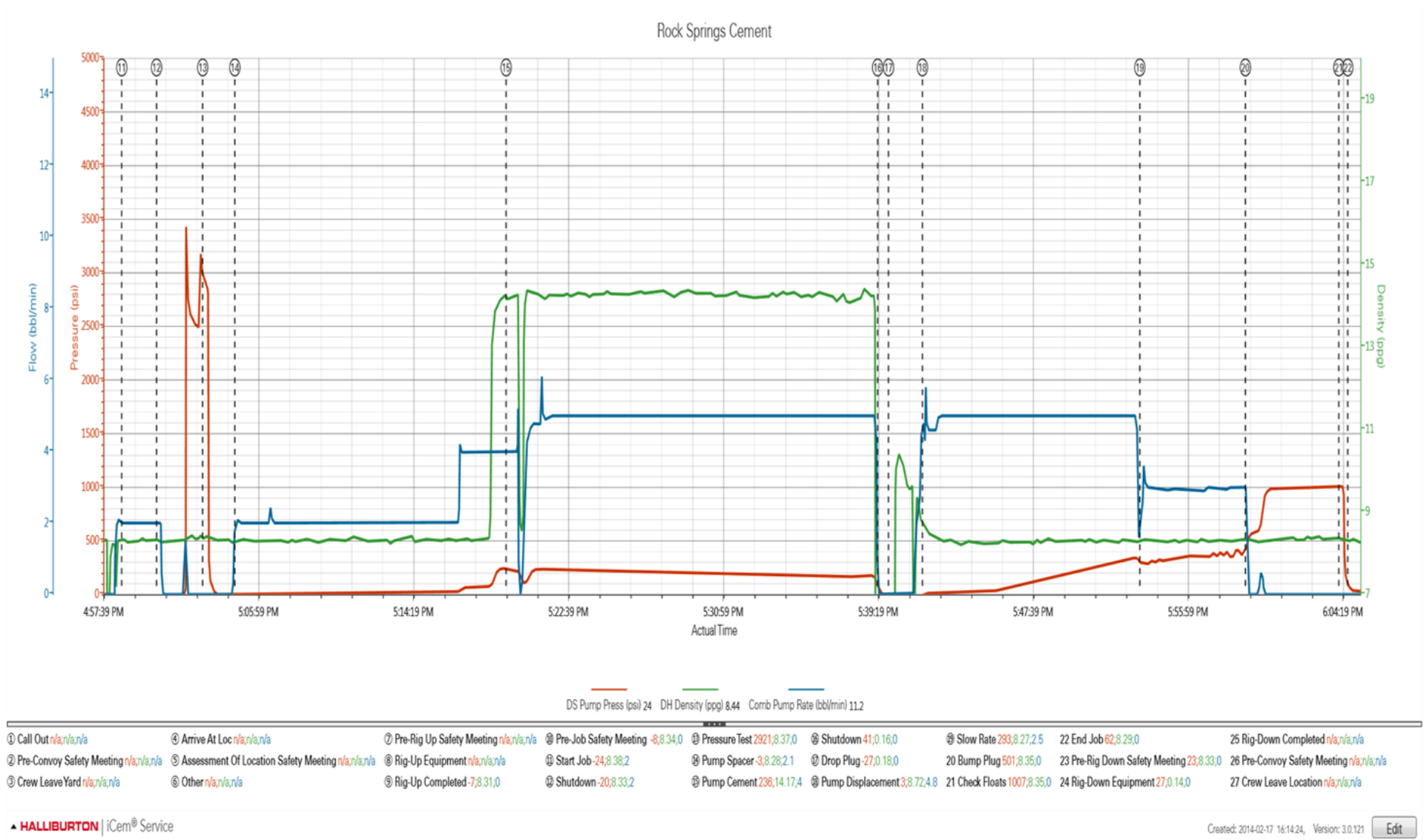
## ***Pumping Schedule***

---

Stage /Plug #	Fluid #	Fluid Type	Fluid Name	Surface Density lbm/gal	Avg Rate bbl/min	Surface Volume	Downhole Volume
1	1	Spacer	Fresh Water Spacer	8.33	2.10	10.0 bbl	10.0 bbl
1	1	Spacer	Mud Flush	8.4	2.10	12.0 bbl	12.0 bbl
1	1	Spacer	Fresh Water Spacer	8.33	2.10	10.0 bbl	10.0 bbl
1	2	Cement Slurry	SwiftCem B2	14.20	4.00	386.0 sacks	386.0 sacks

# HALLIBURTON

## Data Acquisition



# HALLIBURTON

## Service Supervisor Reports

Type	Seq No.	Activity	Graph Label	Date	Time	Source	DS Pump Press (psi)	DH Density (ppg)	Comb Pump Rate (bbl/min)	Comment
Event	1	Call Out	Call Out	2/17/2014	09:30:00	USER				
Event	2	Pre-Convoy Safety Meeting	Pre-Convoy Safety Meeting	2/17/2014	14:45:00	USER				WITH HES CREW TALKED ABOUT THE HAZARDS OF DRIVING TO LOCATION
Event	3	Crew Leave Yard	Crew Leave Yard	2/17/2014	15:00:00	USER				
Event	4	Arrive At Loc	Arrive At Loc	2/17/2014	15:30:00	USER				requested on location @ 12:00 wated for cement to be loaded
Event	5	Assessment Of Location Safety Meeting	Assessment Of Location Safety Meeting	2/17/2014	15:35:00	USER				WITH HES CREW TALKED ABOUT THE HAZARDS OF SPOTTING THE EQUIPMENT & RIGGING UP
Event	6	Other	Other	2/17/2014	15:45:00	USER				SPOT EQUIPMENT
Event	7	Pre-Rig Up Safety Meeting	Pre-Rig Up Safety Meeting	2/17/2014	15:50:00	USER				WITH HES CREW TALKED ABOUT THE HAZARDS OF RIGGING UP WATER BULK & IRON
Event	8	Rig-Up Equipment	Rig-Up Equipment	2/17/2014	16:00:00	USER				
Event	9	Rig-Up Completed	Rig-Up Completed	2/17/2014	16:45:00	USER				
Event	10	Pre-Job Safety Meeting	Pre-Job Safety Meeting	2/17/2014	16:46:00	USER				WITH HES CREW , RIG CREW TALKED ABOUT THE HAZARDS OF DOING THE JOB
Event	11	Start Job	Start Job	2/17/2014	16:58:43	USER	-24.00	8.37	2.00	FILL LINES WITH 5 BBL OF WATER
Event	12	Shutdown	Shutdown	2/17/2014	17:00:35	USER	-20.00	8.33	2.00	
Event	13	Pressure Test	Pressure Test	2/17/2014	17:03:04	USER	2930.00	8.36	0.00	PRESSURE TEST HES IRON TO 3056 PSI

# HALLIBURTON

Event	14	Pump Spacer	Pump Spacer	2/17/2014	17:04:47	USER	-3.00	8.28	2.10	PUMPED 10 BBL OF WATER 10 BBL MUD FLUSH 10 BBL WATER
Event	15	Pump Cement	Pump Cement	2/17/2014	17:19:23	USER	236.00	14.17	4.00	MIXED & PUMPED 368 SKS OF SWIFTCEN @ 14.2 PPG 1.54 YLD 7.66 GAL/ SK 106 BBL
Event	16	Shutdown	Shutdown	2/17/2014	17:39:22	USER	46.00	0.16	0.00	
Event	17	Drop Plug	Drop Plug	2/17/2014	17:39:57	USER	-27.00	0.18	0.00	CUSTOMER WITNESSED HES PLUG
Event	18	Pump Displacement	Pump Displacement	2/17/2014	17:41:47	USER	3.00	8.72	4.80	PUMPED 106 BBL OF WATER DISPLACEMENT
Event	19	Slow Rate	Slow Rate	2/17/2014	17:53:28	USER	294.00	8.26	2.50	SLOW RATE TO BUMP PLUG TO 3 BBL A MIN
Event	20	Bump Plug	Bump Plug	2/17/2014	17:59:09	USER	453.00	8.35	2.40	FINAL CIRCULAIING PRESSURE 500 PSI BROUGHT IT UP TO 1007 PSI
Event	21	Check Floats	Check Floats	2/17/2014	18:04:11	USER	1007.00	8.37	0.00	FLOATS HELD .5 BBL BACK HAD FULL RETURN DURING JOB
Event	22	End Job	End Job	2/17/2014	18:04:40	COM5	67.00	8.29	0.00	8 BBL OF CEMENT TO SURFACE
Event	23	Pre-Rig Down Safety Meeting	Pre-Rig Down Safety Meeting	2/17/2014	18:06:00	USER				WITH HES CREW ,RIG CREW TALKED ABOUT THE HAZARDS OF RIGGING DOWN
Event	24	Rig-Down Equipment	Rig-Down Equipment	2/17/2014	18:15:00	USER				
Event	25	Rig-Down Completed	Rig-Down Completed	2/17/2014	19:00:00	USER				
Event	26	Pre-Convoy Safety Meeting	Pre-Convoy Safety Meeting	2/17/2014	19:15:00	USER				WITH HES CREW TALKED ABOUT THE HAZARDS OF DRIVING BACK TO THE YARD
Event	27	Crew Leave Location	Crew Leave Location	2/17/2014	19:30:00	USER				

## The Road to Excellence Starts with Safety

Sold To #: 300466	Ship To #: 3282186	Quote #:	Sales Order #: 901126830
Customer: ANADARKO PETROLEUM CORP - EBUS		Customer Rep: 29, Majors	
Well Name: Scott		Well #: 27N-32HZ	API/UWI #: 05-123-38826
Field:	City (SAP): FIRESTONE	County/Parish: Weld	State: Colorado
Contractor: Majors		Rig/Platform Name/Num: Majors 29	
Job Purpose: Cement Surface Casing			
Well Type: Development Well		Job Type: Cement Surface Casing	
Sales Person: FLING, MATTHEW	Srvc Supervisor: ESKELSON, GARY		MBU ID Emp #: 362060

## Job Personnel

HES Emp Name	Exp Hrs	Emp #	HES Emp Name	Exp Hrs	Emp #	HES Emp Name	Exp Hrs	Emp #
BAFFORD, JEFFREY W	0.0	459218	DENNIS, SIMS	0.0	158880	ERTL, JASON Walter	0.0	542471
ESKELSON, GARY	0.0	362060	HENRIQUEZ, CARLOS Alfredo	0.0	550987	HYDE, JOSHUA Wayne	0.0	461612

## Equipment

HES Unit #	Distance-1 way	HES Unit #	Distance-1 way	HES Unit #	Distance-1 way	HES Unit #	Distance-1 way
11562570C	20 mile						

## Job

## Job Times

Formation Name						Date	Time	Time Zone
Formation Depth (MD)	Top		Bottom		Called Out	17 - Feb - 2014	10:00	MST
Form Type			BHST		On Location	17 - Feb - 2014	15:00	MST
Job depth MD	1019. ft		Job Depth TVD	1019. ft	Job Started	17 - Feb - 2014	16:09	MST
Water Depth			Wk Ht Above Floor	4. ft	Job Completed	17 - Feb - 2014	18:10	MST
Perforation Depth (MD)	From		To		Departed Loc	17 - Feb - 2014	19:45	MST

## Well Data

Description	New / Used	Max pressure psig	Size in	ID in	Weight lbm/ft	Thread	Grade	Top MD ft	Bottom MD ft	Top TVD ft	Bottom TVD ft
-------------	------------	-------------------	---------	-------	---------------	--------	-------	-----------	--------------	------------	---------------

## Fluid Data

## Stage/Plug #: 1

Fluid #	Stage Type	Fluid Name	Qty	Qty uom	Mixing Density lbm/gal	Yield ft <sup>3</sup> /sk	Mix Fluid Gal/sk	Rate bbl/min	Total Mix Fluid Gal/sk
1	Fresh Water Spacer		10.00	bbl	8.33			2.1	
2	Mud Flush	Mud Flush	12.00	bbl	8.44			2.1	
1	Fresh Water Spacer		10.00	bbl	8.33			2.1	
3	SwiftCem B2	SWIFTCem (TM) SYSTEM (452990)	386.0	sacks	14.2	1.54	7.66	4.0	7.66
7.66 Gal		FRESH WATER							

## Calculated Values

## Pressures

## Volumes

Displacement		Shut In: Instant		Lost Returns		Cement Slurry		Pad	
Top Of Cement		5 Min		Cement Returns	8.0	Actual Displacement	106	Treatment	
Frac Gradient		15 Min		Spacers	32.0	Load and Breakdown		Total Job	

<b>Rates</b>											
Circulating		Mixing		Displacement	4.8	Avg. Job					
Cement Left In Pipe	Amount	45 ft	Reason	Shoe Joint							
Frac Ring # 1 @	ID		Frac ring # 2 @	ID		Frac Ring # 3 @	ID		Frac Ring # 4 @	ID	
The Information Stated Herein Is Correct				Customer Representative Signature							

