

**ANADARKO PETROLEUM CORP - EBUS  
DO NOT MAIL - PO BOX 4995  
THE WOODLANDS, Texas**

Elliott State 26C-17HZ

**Majors 42**

## **Post Job Summary** **Cement Surface Casing**

Date Prepared: 4/1/2014  
Version: 1

Service Supervisor: BARRAS, JOSEPH

Submitted by: GROVES, COREY

**HALLIBURTON**

# HALLIBURTON

## ***Pumping Schedule***

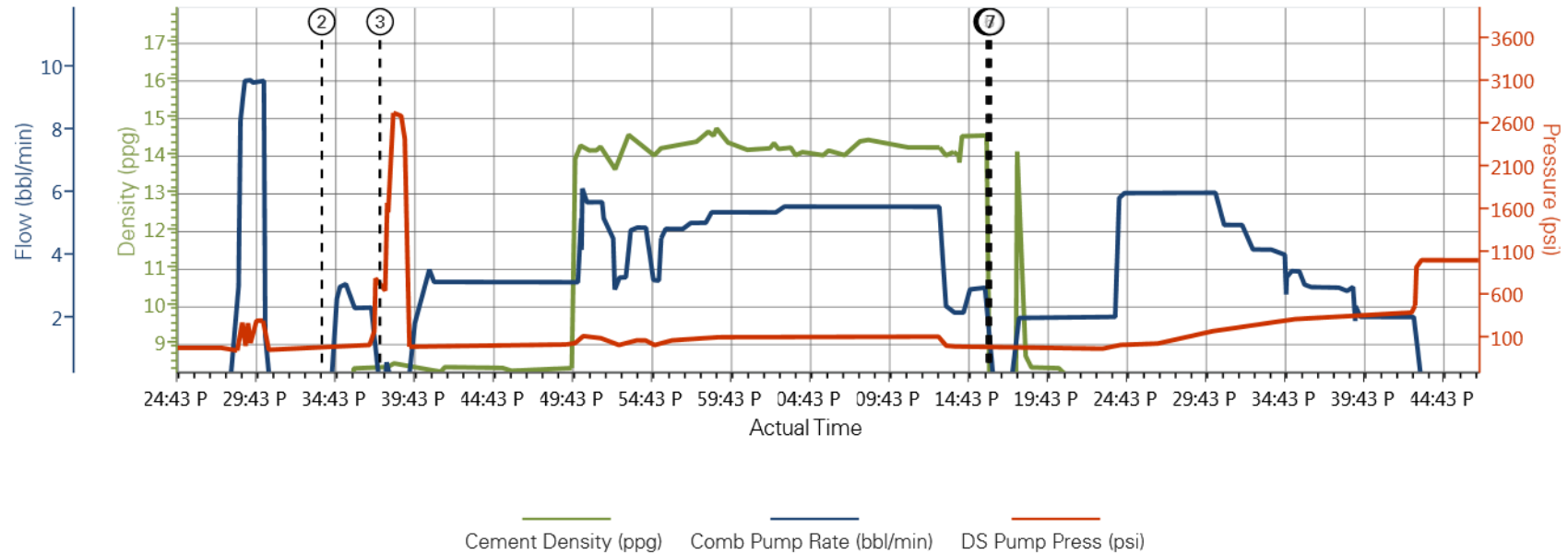
---

<b>Stage /Plug #</b>	<b>Fluid #</b>	<b>Fluid Type</b>	<b>Fluid Name</b>	<b>Surface Density lbm/gal</b>	<b>Avg Rate bbl/min</b>	<b>Surface Volume</b>	<b>Downhole Volume</b>
1	1	Spacer	Fresh Water Spacer	8.33	4.00	10.0 bbl	10.0 bbl
1	1	Spacer	Mud Flush	8.40	5.00	12.0 bbl	12.0 bbl
1	1	Spacer	Fresh Water Spacer	8.33	5.00	10.0 bbl	10.0 bbl
1	2	Cement Slurry	SwiftCem B2	14.20	5.00	462.0 sacks	462.0 sacks

# HALLIBURTON

## Data Acquisition

### ANADARKO ELLIOT STATE 26-17HZ SURFACE



# HALLIBURTON

## Service Supervisor Reports

### Job Log

Date/Time	Chart #	Activity Code	Pump Rate	Cum Vol	Pump		Pressure (psig)		Comments
02/16/2014 13:00		Arrive at Location from Service Center							rig running casing
02/16/2014 13:15		Rig-Up Equipment							move HES into position for job
02/16/2014 14:00		Rig-Up Completed							
02/16/2014 14:15		Safety Meeting - Pre Job							with HES and rig crew
02/16/2014 14:34		Start Job							
02/16/2014 14:37		Test Lines							test lines to 2000 psi with no visible leaks
02/16/2014 14:39		Pump Spacer 1	4	10				40.0	rig water
02/16/2014 14:42		Pump Spacer 2	5	12				37.0	rig water with mud flush
02/16/2014 14:46		Pump Spacer 1	5	10				40.0	rig water
02/16/2014 14:50		Pump Cement	5	126				128.0	mixed with rig water @ 14.2 ppg / 462 sks of swift cem 1.54 yield / 7.66 gal/sk
02/16/2014 15:16		Shutdown							
02/16/2014 15:16		Drop Top Plug							prloaded and witnessed by companyman
02/16/2014 15:16		Pump Displacement	5	92				432.0	rig water ith cement to surface @ 82 bbl into displacing
02/16/2014 15:43		Bump Plug	2					1026.0	
02/16/2014 15:52		Check Floats							held with 1 bbl back
02/16/2014 15:55		End Job							
02/16/2014 16:00		Rig-Down Equipment							
02/16/2014 16:45		Return to Service Center from Job							

## The Road to Excellence Starts with Safety

Sold To #: 300466	Ship To #: 3274569	Quote #:	Sales Order #: 901123517
Customer: ANADARKO PETROLEUM CORP - EBUS		Customer Rep: 42, Majors	
Well Name: Elliott State		Well #: 26C-17HZ	API/UWI #: 05-123-38629
Field: WATTEBERG	City (SAP): PLATTEVILLE	County/Parish: Weld	State: Colorado
Contractor: Majors		Rig/Platform Name/Num: Majors 42	
Job Purpose: Cement Surface Casing			
Well Type: Development Well		Job Type: Cement Surface Casing	
Sales Person: FLING, MATTHEW	Srvc Supervisor: BARRAS, JOSEPH		MBU ID Emp #: 405168

## Job Personnel

HES Emp Name	Exp Hrs	Emp #	HES Emp Name	Exp Hrs	Emp #	HES Emp Name	Exp Hrs	Emp #
BANUELOS, GUADALUPE	0.0	372277	BARRAS, JOSEPH Corey	0.0	405168	SCILEPPI, JOSEPH Dean	0.0	555492
STIELER, KENT	0.0	554541						

## Equipment

HES Unit #	Distance-1 way	HES Unit #	Distance-1 way	HES Unit #	Distance-1 way	HES Unit #	Distance-1 way
10248053C	21 mile	10824253C	21 mile	11019275C	21 mile		

## Job Hours

Date	On Location Hours	Operating Hours	Date	On Location Hours	Operating Hours	Date	On Location Hours	Operating Hours
TOTAL			Total is the sum of each column separately					

## Job

## Job Times

Formation Name	Formation Depth (MD)	Top	Bottom	Form Type	Job depth MD	Job Depth TVD	Water Depth	Perforation Depth (MD)	From	To	Called Out	Date	Time	Time Zone
				BHST	1232. ft	1232. ft	4. ft							

## Well Data

Description	New / Used	Max pressure psig	Size in	ID in	Weight lbm/ft	Thread	Grade	Top MD ft	Bottom MD ft	Top TVD ft	Bottom TVD ft
-------------	------------	-------------------	---------	-------	---------------	--------	-------	-----------	--------------	------------	---------------

Sales/Rental/3<sup>rd</sup> Party (HES)

Description	Qty	Qty uom	Depth	Supplier
COLLAR-STOP-9 5/8"-FRICTION-HINGED	2	EA		

## Tools and Accessories

Type	Size	Qty	Make	Depth	Type	Size	Qty	Make	Depth	Type	Size	Qty	Make
Guide Shoe					Packer					Top Plug			
Float Shoe					Bridge Plug					Bottom Plug			
Float Collar					Retainer					SSR plug set			
Insert Float										Plug Container			
Stage Tool										Centralizers			

## Miscellaneous Materials

Gelling Agt	Conc	Surfactant	Conc	Acid Type	Qty	Conc	%
Treatment Fld	Conc	Inhibitor	Conc	Sand Type	Size	Qty	

Fluid Data									
Stage/Plug #: 1									
Fluid #	Stage Type	Fluid Name	Qty	Qty uom	Mixing Density lbm/gal	Yield ft <sup>3</sup> /sk	Mix Fluid Gal/sk	Rate bbl/min	Total Mix Fluid Gal/sk
1	Fresh Water Spacer	Fresh Water	10	bbl	8.33			4.0	
2	Mud Flush	Mud Flush	12	bbl	8.40			5.0	
3	Fresh Water	Fresh Water	10	bbl	8.33			5.0	
4	SwiftCem B2	SWIFTCEN (TM) SYSTEM (452990)	462.0	sacks	14.2	1.54	7.66	5.0	7.66
7.66 Gal		FRESH WATER							
Calculated Values		Pressures		Volumes					
Displacement		Shut In: Instant		Lost Returns		Cement Slurry		Pad	
Top Of Cement		5 Min		Cement Returns		Actual Displacement		Treatment	
Frac Gradient		15 Min		Spacers		Load and Breakdown		Total Job	
Rates									
Circulating		Mixing		Displacement		Avg. Job			
Cement Left In Pipe		Amount	0 ft	Reason	Shoe Joint				
Frac Ring # 1 @	ID	Frac ring # 2 @	ID	Frac Ring # 3 @	ID	Frac Ring # 4 @	ID		
The Information Stated Herein Is Correct				Customer Representative Signature					

