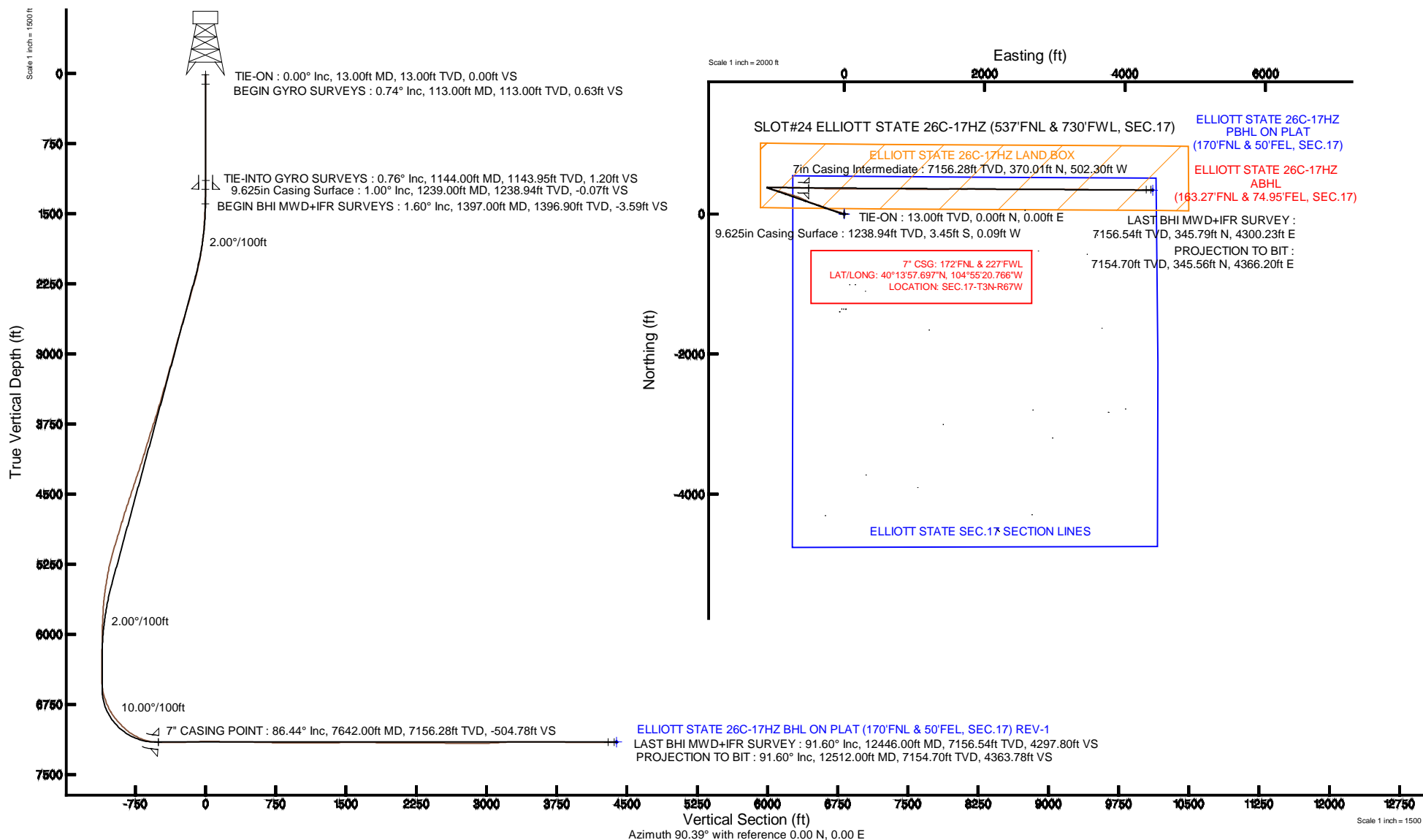


# KERR-MCGEE OIL & GAS ONSHORE LP

Location: COLORADO Slot: SLOT#24 ELLIOTT STATE 26C-17HZ (537'FNL & 730'FWL, SEC.17)  
 Field: WELD COUNTY (KERR MCGEE) Well: ELLIOTT STATE 26C-17HZ  
 Facility: SEC.17-T3N-R67W Wellbore: ELLIOTT STATE 26C-17HZ PWB

Plot reference wellpath is ELLIOTT STATE 26C-17HZ (REV-B.0) PWP

True vertical depths are referenced to ENSIGN 138 (13' RKB) (RKB)	Grid System: NAD83 / Lambert Colorado SP, Northern Zone (501), US feet
Measured depths are referenced to ENSIGN 138 (13' RKB) (RKB)	North Reference: True north
ENSGN 138 (13' RKB) (RKB) to Mean Sea Level: 4849 feet	Scale: True distance
Mean Sea Level to Mud line (At Slot: SLOT#24 ELLIOTT STATE 26C-17HZ (537'FNL & 730'FWL, SEC.17)): 0 feet	Depths are in feet
Coordinates are in feet referenced to Slot	Created by: robiale01 on 20/Jun/2014



# Actual Wellpath Report

ELLIOTT STATE 26C-17HZ AWP

Page 1 of 6

REFERENCE WELLPATH IDENTIFICATION			
Operator	KERR-MCGEE OIL & GAS ONSHORE LP	Slot	SLOT#24 ELLIOTT STATE 26C-17HZ (537'FNL & 730'FWL, SEC.17)
Area	COLORADO	Well	ELLIOTT STATE 26C-17HZ
Field	WELD COUNTY (KERR MCGEE)	Wellbore	ELLIOTT STATE 26C-17HZ AWB
Facility	SEC.17-T3N-R67W		

REPORT SETUP INFORMATION			
Projection System	NAD83 / Lambert Colorado SP, Northern Zone (501), US feet	Software System	WellArchitect® 4.0.0
North Reference	True	User	Robiale01
Scale	0.999957	Report Generated	20/Jun/2014 at 11:05
Convergence at slot	n/a	Database/Source file	WellArchitectDB/_ELLIOTT_STATE_26C-17HZ_AWB.xml

WELLPATH LOCATION						
	Local coordinates		Grid coordinates		Geographic coordinates	
	North[ft]	East[ft]	Easting[US ft]	Northing[US ft]	Latitude	Longitude
Slot Location	1026.60	-155.24	3161758.35	1327770.68	40°13'54.041"N	104°55'14.290"W
Facility Reference Pt			3161920.30	1326745.17	40°13'43.896"N	104°55'12.288"W
Field Reference Pt			3197771.84	1268891.29	40°04'09.600"N	104°47'36.000"W

WELLPATH DATUM			
Calculation method	Minimum curvature	ENSIGN 138 (13' RKB) (RKB) to Facility Vertical Datum	4849.00ft
Horizontal Reference Pt	Slot	ENSIGN 138 (13' RKB) (RKB) to Mean Sea Level	4849.00ft
Vertical Reference Pt	ENSIGN 138 (13' RKB) (RKB)	ENSIGN 138 (13' RKB) (RKB) to Mud Line at Slot (SLOT#24 ELLIOTT STATE 26C-17HZ (537'FNL & 730'FWL, SEC.17))	4849.00ft
MD Reference Pt	ENSIGN 138 (13' RKB) (RKB)	Section Origin	N 0.00, E 0.00 ft
Field Vertical Reference	Mean Sea Level	Section Azimuth	90.39°

# Actual Wellpath Report

ELLIOTT STATE 26C-17HZ AWP

Page 2 of 6

## REFERENCE WELLPATH IDENTIFICATION

Operator	KERR-MCGEE OIL & GAS ONSHORE LP	Slot	SLOT#24 ELLIOTT STATE 26C-17HZ (537'FNL & 730'FWL, SEC.17)
Area	COLORADO	Well	ELLIOTT STATE 26C-17HZ
Field	WELD COUNTY (KERR MCGEE)	Wellbore	ELLIOTT STATE 26C-17HZ AWP
Facility	SEC.17-T3N-R67W		

## WELLPATH DATA (115 stations) † = interpolated/extrapolated station

MD [ft]	Inclination [°]	Azimuth [°]	TVD [ft]	Vert Sect [ft]	North [ft]	East [ft]	Latitude	Longitude	DLS [°/100ft]	Comments
0.00†	0.000	79.620	0.00	0.00	0.00	0.00	40°13'54.041"N	104°55'14.290"W	0.00	
13.00	0.000	79.620	13.00	0.00	0.00	0.00	40°13'54.041"N	104°55'14.290"W	0.00	TIE-ON
113.00	0.740	79.620	113.00	0.63	0.12	0.64	40°13'54.042"N	104°55'14.281"W	0.74	BEGIN GYRO SURVEYS
213.00	0.640	136.570	212.99	1.66	-0.17	1.65	40°13'54.039"N	104°55'14.268"W	0.66	
313.00	0.610	206.710	312.99	1.81	-1.05	1.80	40°13'54.030"N	104°55'14.266"W	0.72	
413.00	0.580	241.790	412.98	1.13	-1.77	1.11	40°13'54.023"N	104°55'14.275"W	0.36	
513.00	0.410	306.420	512.98	0.39	-1.80	0.38	40°13'54.023"N	104°55'14.285"W	0.55	
613.00	0.430	350.160	612.98	0.04	-1.21	0.03	40°13'54.029"N	104°55'14.289"W	0.31	
713.00	0.440	24.590	712.97	0.13	-0.49	0.12	40°13'54.036"N	104°55'14.288"W	0.26	
813.00	0.330	99.710	812.97	0.57	-0.19	0.57	40°13'54.039"N	104°55'14.282"W	0.48	
913.00	0.570	128.420	912.97	1.24	-0.55	1.24	40°13'54.035"N	104°55'14.274"W	0.32	
1013.00	0.550	177.780	1012.96	1.66	-1.34	1.65	40°13'54.028"N	104°55'14.268"W	0.47	
1113.00	0.800	201.540	1112.96	1.43	-2.47	1.41	40°13'54.016"N	104°55'14.271"W	0.37	
1144.00	0.760	228.910	1143.95	1.20	-2.81	1.18	40°13'54.013"N	104°55'14.274"W	1.20	TIE ONTO GYRO SURVEYS
1397.00	1.600	273.300	1396.90	-3.59	-3.71	-3.61	40°13'54.004"N	104°55'14.336"W	0.47	BEGIN BHI MWD+IFR SURVEYS
1491.00	3.000	289.900	1490.83	-7.22	-2.79	-7.24	40°13'54.013"N	104°55'14.383"W	1.63	
1587.00	3.800	304.200	1586.66	-12.23	-0.15	-12.23	40°13'54.039"N	104°55'14.447"W	1.21	
1679.00	5.800	302.600	1678.33	-18.70	4.07	-18.67	40°13'54.081"N	104°55'14.530"W	2.18	
1770.00	7.100	298.300	1768.75	-27.56	9.21	-27.49	40°13'54.132"N	104°55'14.644"W	1.52	
1861.00	8.900	294.400	1858.86	-38.96	14.79	-38.86	40°13'54.187"N	104°55'14.791"W	2.06	
1953.00	11.000	288.400	1949.48	-53.81	20.50	-53.67	40°13'54.243"N	104°55'14.982"W	2.54	
2045.00	12.500	286.700	2039.55	-71.71	26.13	-71.54	40°13'54.299"N	104°55'15.212"W	1.67	
2137.00	14.000	287.600	2129.10	-91.90	32.36	-91.68	40°13'54.361"N	104°55'15.472"W	1.65	
2229.00	16.000	285.600	2217.96	-114.77	39.13	-114.50	40°13'54.428"N	104°55'15.766"W	2.25	
2320.00	16.300	286.100	2305.37	-139.16	46.05	-138.85	40°13'54.496"N	104°55'16.080"W	0.36	
2411.00	16.200	285.700	2392.73	-163.70	53.02	-163.34	40°13'54.565"N	104°55'16.396"W	0.16	
2594.00	17.900	289.400	2567.69	-214.92	69.27	-214.45	40°13'54.725"N	104°55'17.055"W	1.10	
2777.00	16.500	289.600	2742.50	-266.05	87.33	-265.46	40°13'54.904"N	104°55'17.712"W	0.77	
2961.00	16.300	291.600	2919.01	-314.79	105.60	-314.08	40°13'55.084"N	104°55'18.339"W	0.33	
3051.00	16.400	288.900	3005.38	-338.62	114.37	-337.85	40°13'55.171"N	104°55'18.646"W	0.85	
3234.00	16.200	288.300	3181.02	-387.41	130.75	-386.53	40°13'55.333"N	104°55'19.273"W	0.14	
3420.00	17.100	288.400	3359.22	-438.10	147.53	-437.11	40°13'55.499"N	104°55'19.925"W	0.48	
3609.00	17.000	290.800	3539.91	-490.42	166.11	-489.30	40°13'55.682"N	104°55'20.598"W	0.38	
3798.00	20.000	294.900	3719.14	-545.74	189.54	-544.46	40°13'55.914"N	104°55'21.310"W	1.73	
3988.00	18.600	295.600	3898.45	-602.72	216.31	-601.26	40°13'56.178"N	104°55'22.042"W	0.75	
4177.00	17.700	290.900	4078.06	-656.91	239.59	-655.29	40°13'56.408"N	104°55'22.739"W	0.91	
4366.00	19.900	286.700	4256.97	-714.70	259.09	-712.95	40°13'56.601"N	104°55'23.482"W	1.37	
4556.00	18.300	285.700	4436.51	-774.51	276.45	-772.64	40°13'56.773"N	104°55'24.252"W	0.86	
4745.00	19.700	287.200	4615.21	-833.62	293.90	-831.64	40°13'56.945"N	104°55'25.012"W	0.78	
4935.00	16.900	287.400	4795.58	-890.70	311.63	-888.60	40°13'57.120"N	104°55'25.747"W	1.47	
5124.00	17.700	283.600	4976.03	-944.94	326.60	-942.74	40°13'57.268"N	104°55'26.445"W	0.73	
5219.00	16.300	283.000	5066.88	-972.01	333.00	-969.77	40°13'57.331"N	104°55'26.793"W	1.49	
5314.00	16.400	284.500	5158.04	-998.03	339.36	-995.74	40°13'57.394"N	104°55'27.128"W	0.46	
5408.00	13.100	285.700	5248.93	-1021.18	345.56	-1018.85	40°13'57.455"N	104°55'27.426"W	3.53	
5503.00	12.400	295.300	5341.60	-1040.82	352.84	-1038.44	40°13'57.527"N	104°55'27.679"W	2.35	

# Actual Wellpath Report

ELLIOTT STATE 26C-17HZ AWP

Page 3 of 6

## REFERENCE WELLPATH IDENTIFICATION

Operator	KERR-MCGEE OIL & GAS ONSHORE LP	Slot	SLOT#24 ELLIOTT STATE 26C-17HZ (537'FNL & 730'FWL, SEC.17)
Area	COLORADO	Well	ELLIOTT STATE 26C-17HZ
Field	WELD COUNTY (KERR MCGEE)	Wellbore	ELLIOTT STATE 26C-17HZ AWP
Facility	SEC.17-T3N-R67W		

## WELLPATH DATA (115 stations) † = interpolated/extrapolated station

MD [ft]	Inclination [°]	Azimuth [°]	TVD [ft]	Vert Sect [ft]	North [ft]	East [ft]	Latitude	Longitude	DLS [°/100ft]	Comments
5597.00	9.700	289.600	5433.85	-1057.45	359.81	-1055.03	40°13'57.596"N	104°55'27.893"W	3.10	
5691.00	8.300	288.000	5526.69	-1071.40	364.56	-1068.94	40°13'57.643"N	104°55'28.072"W	1.51	
5786.00	6.400	293.000	5620.90	-1082.82	368.75	-1080.34	40°13'57.685"N	104°55'28.219"W	2.11	
5881.00	3.700	285.500	5715.53	-1090.67	371.64	-1088.17	40°13'57.713"N	104°55'28.320"W	2.92	
5975.00	3.100	284.500	5809.36	-1096.07	373.08	-1093.55	40°13'57.727"N	104°55'28.389"W	0.64	
6069.00	2.700	283.100	5903.24	-1100.69	374.22	-1098.17	40°13'57.739"N	104°55'28.449"W	0.43	
6165.00	0.800	308.900	5999.19	-1103.42	375.16	-1100.89	40°13'57.748"N	104°55'28.484"W	2.09	
6544.00	0.700	285.800	6378.16	-1107.72	377.45	-1105.18	40°13'57.770"N	104°55'28.539"W	0.08	
6639.00	1.200	57.300	6473.15	-1107.45	378.14	-1104.90	40°13'57.777"N	104°55'28.536"W	1.84	
6733.00	5.400	83.700	6566.98	-1102.23	379.16	-1099.67	40°13'57.787"N	104°55'28.468"W	4.64	
6828.00	16.700	95.000	6660.08	-1084.12	378.46	-1081.57	40°13'57.780"N	104°55'28.235"W	12.06	
6923.00	23.100	92.300	6749.36	-1051.86	376.52	-1049.32	40°13'57.761"N	104°55'27.819"W	6.80	
7017.00	30.200	89.800	6833.32	-1009.73	375.86	-1007.20	40°13'57.755"N	104°55'27.276"W	7.65	
7111.00	40.900	88.900	6909.69	-955.17	376.54	-952.63	40°13'57.762"N	104°55'26.572"W	11.40	
7206.00	44.100	89.700	6979.72	-891.01	377.31	-888.46	40°13'57.769"N	104°55'25.745"W	3.42	
7300.00	51.700	89.300	7042.70	-821.33	377.93	-818.77	40°13'57.775"N	104°55'24.846"W	8.09	
7396.00	63.000	90.600	7094.41	-740.63	377.94	-738.08	40°13'57.775"N	104°55'23.806"W	11.83	
7491.00	71.500	92.700	7131.12	-653.13	375.37	-650.59	40°13'57.750"N	104°55'22.678"W	9.18	
7590.00	84.100	91.700	7151.99	-556.61	371.69	-554.09	40°13'57.714"N	104°55'21.434"W	12.77	
7642.00†	86.436	92.003	7156.28	-504.81	370.01	-502.30	40°13'57.697"N	104°55'20.766"W	4.53	7" CASING POINT
7728.00	90.300	92.500	7158.73	-418.90	366.63	-416.42	40°13'57.664"N	104°55'19.659"W	4.53	
7823.00	91.300	92.500	7157.41	-323.98	362.49	-321.52	40°13'57.623"N	104°55'18.435"W	1.05	
7917.00	91.400	91.600	7155.19	-230.05	359.13	-227.61	40°13'57.590"N	104°55'17.224"W	0.96	
8013.00	92.100	91.600	7152.26	-134.11	356.45	-131.69	40°13'57.563"N	104°55'15.988"W	0.73	
8107.00	92.000	90.000	7148.90	-40.18	355.14	-37.76	40°13'57.550"N	104°55'14.776"W	1.70	
8202.00	89.400	89.900	7147.74	54.80	355.22	57.22	40°13'57.551"N	104°55'13.552"W	2.74	
8297.00	88.400	89.300	7149.56	149.78	355.89	152.20	40°13'57.558"N	104°55'12.327"W	1.23	
8392.00	90.400	89.600	7150.56	244.75	356.80	247.19	40°13'57.567"N	104°55'11.102"W	2.13	
8486.00	90.200	90.100	7150.06	338.75	357.04	341.18	40°13'57.569"N	104°55'09.891"W	0.57	
8580.00	87.600	89.800	7151.87	432.72	357.12	435.16	40°13'57.570"N	104°55'08.679"W	2.78	
8675.00	89.200	90.200	7154.52	527.68	357.12	530.12	40°13'57.570"N	104°55'07.455"W	1.74	
8769.00	88.400	91.200	7156.49	621.65	355.98	624.09	40°13'57.558"N	104°55'06.243"W	1.36	
8863.00	87.900	90.300	7159.52	715.60	354.75	718.03	40°13'57.546"N	104°55'05.032"W	1.09	
8959.00	89.100	90.300	7162.04	811.57	354.24	814.00	40°13'57.541"N	104°55'03.794"W	1.25	
9054.00	90.000	90.600	7162.78	906.56	353.50	908.99	40°13'57.534"N	104°55'02.570"W	1.00	
9149.00	90.100	90.700	7162.70	1001.56	352.42	1003.98	40°13'57.523"N	104°55'01.345"W	0.15	
9244.00	90.500	90.400	7162.20	1096.56	351.51	1098.98	40°13'57.514"N	104°55'00.120"W	0.53	
9338.00	90.500	90.100	7161.38	1190.55	351.10	1192.97	40°13'57.510"N	104°54'58.908"W	0.32	
9434.00	90.200	89.600	7160.80	1286.55	351.35	1288.97	40°13'57.512"N	104°54'57.670"W	0.61	
9528.00	90.700	89.000	7160.06	1380.53	352.50	1382.96	40°13'57.524"N	104°54'56.458"W	0.83	
9622.00	90.700	89.500	7158.91	1474.50	353.73	1476.94	40°13'57.536"N	104°54'55.247"W	0.53	
9717.00	90.300	90.100	7158.08	1569.49	354.06	1571.94	40°13'57.539"N	104°54'54.022"W	0.76	
9811.00	89.400	90.200	7158.33	1663.49	353.81	1665.94	40°13'57.537"N	104°54'52.810"W	0.96	
9905.00	89.600	89.700	7159.15	1757.48	353.90	1759.93	40°13'57.537"N	104°54'51.598"W	0.57	
10000.00	89.700	90.300	7159.73	1852.48	353.90	1854.93	40°13'57.537"N	104°54'50.373"W	0.64	

REFERENCE WELLPATH IDENTIFICATION			
Operator	KERR-MCGEE OIL & GAS ONSHORE LP	Slot	SLOT#24 ELLIOTT STATE 26C-17HZ (537'FNL & 730'FWL, SEC.17)
Area	COLORADO	Well	ELLIOTT STATE 26C-17HZ
Field	WELD COUNTY (KERR MCGEE)	Wellbore	ELLIOTT STATE 26C-17HZ AWB
Facility	SEC.17-T3N-R67W		

### WELLPATH DATA (115 stations)

MD [ft]	Inclination [°]	Azimuth [°]	TVD [ft]	Vert Sect [ft]	North [ft]	East [ft]	Latitude	Longitude	DLS [°/100ft]	Comments
10095.00	89.800	90.600	7160.14	1947.48	353.15	1949.93	40°13'57.530"N	104°54'49.148"W	0.33	
10190.00	89.400	90.300	7160.80	2042.47	352.40	2044.92	40°13'57.522"N	104°54'47.923"W	0.53	
10285.00	90.100	90.100	7161.22	2137.47	352.07	2139.92	40°13'57.519"N	104°54'46.699"W	0.77	
10380.00	90.700	90.300	7160.56	2232.47	351.74	2234.92	40°13'57.516"N	104°54'45.474"W	0.67	
10474.00	89.600	90.900	7160.31	2326.47	350.76	2328.91	40°13'57.506"N	104°54'44.262"W	1.33	
10568.00	88.800	89.900	7161.62	2420.46	350.10	2422.89	40°13'57.499"N	104°54'43.050"W	1.36	
10662.00	88.700	89.700	7163.67	2514.43	350.43	2516.87	40°13'57.502"N	104°54'41.838"W	0.24	
10851.00	88.900	89.900	7167.63	2703.38	351.09	2705.83	40°13'57.509"N	104°54'39.402"W	0.15	
10946.00	89.600	90.000	7168.87	2798.36	351.17	2800.82	40°13'57.509"N	104°54'38.177"W	0.74	
11040.00	91.200	90.700	7168.22	2892.36	350.60	2894.81	40°13'57.504"N	104°54'36.965"W	1.86	
11135.00	91.400	90.400	7166.06	2987.33	349.68	2989.78	40°13'57.495"N	104°54'35.741"W	0.38	
11229.00	93.400	90.800	7162.13	3081.25	348.70	3083.69	40°13'57.485"N	104°54'34.530"W	2.17	
11323.00	93.500	90.400	7156.47	3175.07	347.72	3177.52	40°13'57.475"N	104°54'33.320"W	0.44	
11417.00	91.900	89.200	7152.04	3268.96	348.05	3271.41	40°13'57.478"N	104°54'32.110"W	2.13	
11512.00	90.300	90.100	7150.22	3363.93	348.63	3366.38	40°13'57.484"N	104°54'30.885"W	1.93	
11607.00	89.500	91.100	7150.38	3458.93	347.63	3461.37	40°13'57.474"N	104°54'29.660"W	1.35	
11701.00	90.300	90.300	7150.55	3552.93	346.48	3555.37	40°13'57.462"N	104°54'28.449"W	1.20	
11795.00	90.700	90.100	7149.73	3646.92	346.16	3649.36	40°13'57.459"N	104°54'27.237"W	0.48	
11890.00	87.800	89.700	7150.97	3741.90	346.32	3744.34	40°13'57.460"N	104°54'26.012"W	3.08	
11985.00	88.100	89.800	7154.37	3836.83	346.74	3839.28	40°13'57.464"N	104°54'24.788"W	0.33	
12080.00	90.600	89.900	7155.45	3931.81	346.98	3934.27	40°13'57.467"N	104°54'23.563"W	2.63	
12174.00	89.700	90.300	7155.20	4025.81	346.82	4028.27	40°13'57.465"N	104°54'22.351"W	1.05	
12269.00	88.500	90.200	7156.69	4120.80	346.41	4123.25	40°13'57.461"N	104°54'21.126"W	1.27	
12446.00	91.600	90.200	7156.54	4297.78	345.79	4300.23	40°13'57.454"N	104°54'18.845"W	1.75	LAST BHI MWD+IFR SURVEY
12512.00	91.600	90.200	7154.70	4363.75	345.56	4366.20	40°13'57.452"N	104°54'17.994"W	0.00	PROJECTION TO BIT

### HOLE & CASING SECTIONS - Ref Wellbore: ELLIOTT STATE 26C-17HZ AWB Ref Wellpath: ELLIOTT STATE 26C-17HZ AWP

String/Diameter	Start MD [ft]	End MD [ft]	Interval [ft]	Start TVD [ft]	End TVD [ft]	Start N/S [ft]	Start E/W [ft]	End N/S [ft]	End E/W [ft]
13.5in Open Hole	13.00	1249.00	1236.00	13.00	1248.94	0.00	0.00	-3.50	-0.26
9.625in Casing Surface	13.00	1239.00	1226.00	13.00	1238.94	0.00	0.00	-3.45	-0.09
8.75in Open Hole	1249.00	7655.00	6406.00	1248.94	7157.03	-3.50	-0.26	369.55	-489.33
7in Casing Intermediate	13.00	7642.00	7629.00	13.00	7156.28	0.00	0.00	370.01	-502.30
6.125in Open Hole	7655.00	12512.00	4857.00	7157.03	7154.70	369.55	-489.33	345.56	4366.20

# Actual Wellpath Report

ELLIOTT STATE 26C-17HZ AWP

Page 5 of 6

REFERENCE WELLPATH IDENTIFICATION			
Operator	KERR-MCGEE OIL & GAS ONSHORE LP	Slot	SLOT#24 ELLIOTT STATE 26C-17HZ (537'FNL & 730'FWL, SEC.17)
Area	COLORADO	Well	ELLIOTT STATE 26C-17HZ
Field	WELD COUNTY (KERR MCGEE)	Wellbore	ELLIOTT STATE 26C-17HZ AWB
Facility	SEC.17-T3N-R67W		

WELLPATH COMPOSITION - Ref Wellbore: ELLIOTT STATE 26C-17HZ AWB    Ref Wellpath: ELLIOTT STATE 26C-17HZ AWP				
Start MD [ft]	End MD [ft]	Positional Uncertainty Model	Log Name/Comment	Wellbore
13.00	1144.00	Generic gyro - continuous (Standard)	MS ENERGY GYRO SURVEYS <113-1144>	ELLIOTT STATE 26C-17HZ AWB
1144.00	7590.00	NaviTrak (IFR)_1	BHI MWD+IFR SURVEYS <1397-7590>	ELLIOTT STATE 26C-17HZ AWB
7590.00	12446.00	NaviTrak (IFR)_1	BHI MWD+IFR SURVEYS 6 1/8" HOLE <7728-12446>	ELLIOTT STATE 26C-17HZ AWB
12446.00	12512.00	Blind Drilling (std)	Projection to bit	ELLIOTT STATE 26C-17HZ AWB

# Actual Wellpath Report

ELLIOTT STATE 26C-17HZ AWP

Page 6 of 6

REFERENCE WELLPATH IDENTIFICATION			
Operator	KERR-MCGEE OIL & GAS ONSHORE LP	Slot	SLOT#24 ELLIOTT STATE 26C-17HZ (537'FNL & 730'FWL, SEC.17)
Area	COLORADO	Well	ELLIOTT STATE 26C-17HZ
Field	WELD COUNTY (KERR MCGEE)	Wellbore	ELLIOTT STATE 26C-17HZ AWB
Facility	SEC.17-T3N-R67W		

WELLPATH COMMENTS				
MD [ft]	Inclination [°]	Azimuth [°]	TVD [ft]	Comment
13.00	0.000	79.620	13.00	TIE-ON
113.00	0.740	79.620	113.00	BEGIN GYRO SURVEYS
1144.00	0.760	228.910	1143.95	TIE ONTO GYRO SURVEYS
1397.00	1.600	273.300	1396.90	BEGIN BHI MWD+IFR SURVEYS
7642.00	86.436	92.003	7156.28	7" CASING POINT
12446.00	91.600	90.200	7156.54	LAST BHI MWD+IFR SURVEY
12512.00	91.600	90.200	7154.70	PROJECTION TO BIT