



Scale: 5" / 100'
Measured Depth Log

Well Name Elliott State 26C-17HZ

Location NWNW SEC 17, T3N, R67W

State Colorado

Country USA

API Number 05-123-38629-0000

Region DJ Basin

Spud Date 4/25/2014

Surface Coordinates 537' FNL & 730' FWL

Bottom Hole Coordinates 170' FNL & 50' FEL

County Weld

Rig Number Ensign 138

Field Wattenberg

Drilling Completed 5/2/2014

Ground Elevation 4836'

K.B. Elevation 4849'

Logged Interval 7000' To 12512'

Total Depth 12512'

Formation Codell Sandstone

Type of Drilling Fluid LSND, H2O

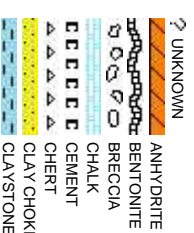
Company Anadarko

Address Granite Tower
1099 18th St, S
Denver, CO 80202

Name Zach Uber & G

Company Columbine Logg

Address 2385 S. Lipan S
Denver, CO 80202



Operator

Unit #1800
202

Geologist

Abbe Rubio

Geology, Inc.

2223

Rock Types

CONGLOMERATE	MARLSTONE	SHALY SANDSTONE
DOLOMITE	METAMORPHIC	SHALY SILTSTONE
DOLOMITIC LIMESTONE	NO SAMPLE	SILT SHALE
GRANITE	SALT	SILTSTONE
GYPSUM	SANDSTONE	TILL
IGNEOUS	SALT-PEPPER SAND	TUFF
SIDERITE or LIMONITE	SHALE	WELDED TUFF
LIMESTONE	SHALE COLORED	
	SHALE GRAY	

Accessories

Fossils	GASTROPOD	ARGILLITE GRAIN	HEAVY MINERAL	Stringer
INOCERAMUS	B BENTONITE	K KAOLIN	ANHYDRITE STRINGER	BENTONITE STRINGER
ALGAE	O OOLITE	M MARCASTITE	COAL STRINGER	DOLOMITE STRINGER
AMPHIPORA	O OSTRACOD	M MICACEOUS	GYPSUM STRINGER	LIMESTONE STRINGER
BELEMNITE	P PELECYPOD	C CARBONACEOUS FLAKES	P PYRITE	MARLSTONE (CALC) STRG
BIOCLASTIC	P PELLET	C CHERT	S SALT CAST	SANDSTONE (DOL) STRG
BRACHIOPOD	P PISOLUTE	T THIN BEDS	S SANDY	SHALE STRINGER
BRYOZOA	P PLANT REMAINS	D DOLOMITIC	S SIDERITE	
CEPHALOPOD	S SCAPHOPOD	F FELDSPAR		
CORAL	S STROMATOPOROID	F FERRUGINOUS PELLET		
CRINOID				
ECHINOID				
Minerals	F FISH	F FERRUGINOUS	S SILICEOUS	SILTSTONE STRINGER
FORAMINIFERA	A ANHYDRITIC	G GLAUCONITE	S SILTY	
F FOSSIL	A ARGILLACEOUS	G GYPSIFEROUS	T TUFACEOUS	

Other Symbols

Oil Show	P PINPOINT	W WIRELINE TESTED - LEFT	E EARTHY
V VUGGY	F FAULT	W WIRELINE TESTED - RT	F FINELY XLN
Engineering	D DEAD	F FORMATION TOP	G GRAINSTONE
E EVEN	G GAS SHOW	D DRILL STEM TEST	L LITHOGRAPHIC
Q QUESTIONABLE	O OIL SHOW	M MINDEPTH MN DEPTH	M MICRO XLN
B BIT			
S SPOTTED STAINING	C CONNECTION (UP)	R ROUNDING	M MUDSTONE
Porosity	C CONNECTION (DOWN)	A ANGULAR	P PACKSTONE
E EARTHY	C CONNECTION GAS (LEFT)	S SUBANG	W WACKESTONE
F FENESTRAL	T TRIP GAS	S SUBUND	
F FRACTURE	T TRIP GAS (LEFT)		
I INTERCRYSTALLINE	C CASING	Textures	M MODERATE
I INTERCRYSTALLINE	D DOWN TIME GAS	S SIDEWALL CORE (LEFT)	P POOR
M MOLDIC	D DOWN TIME GAS (LEFT)	S SLIDE	W WELL
O ORGANIC	C CORE - LOST	S SIDEWALL CORE (RIGHT)	C CHALKY
	C CORE - RECOVERED	S SURVEY	C CRYPTOXLN

Slide/Rotate

ROP SCALE:
0 - 400 FT/HR

ROP
ROF
GAMMA

GAMMA SCALE:
0 - 300 API

Total Gas & Chromatograph

GAS
C1
C2
C3
C4

PASON TOTAL GAS
IN "GAS 10000" UNITS

Depth Labels

% Lith

100' SAMPLE INTERVALS

Bit Data

Type: Smith/ SDi 611
Size: 8.75
Jets: 3x14/3x15

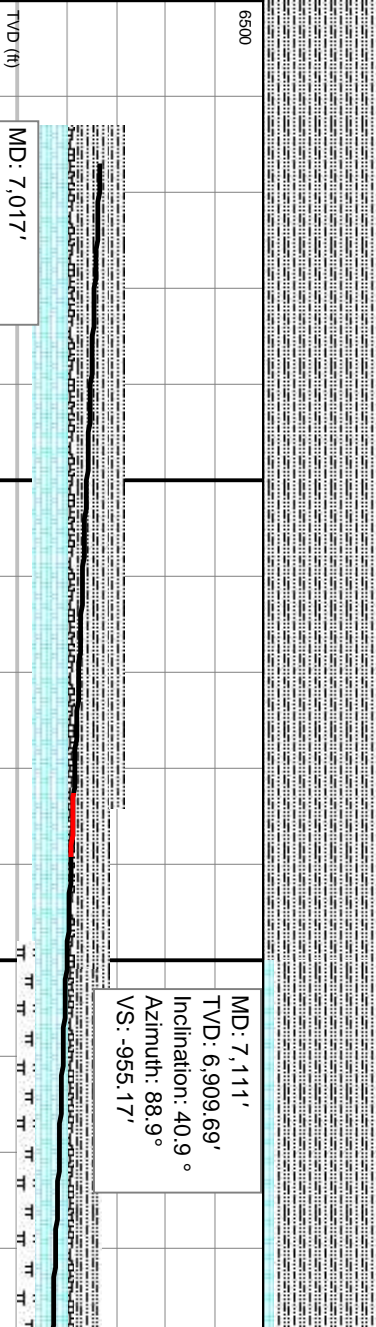
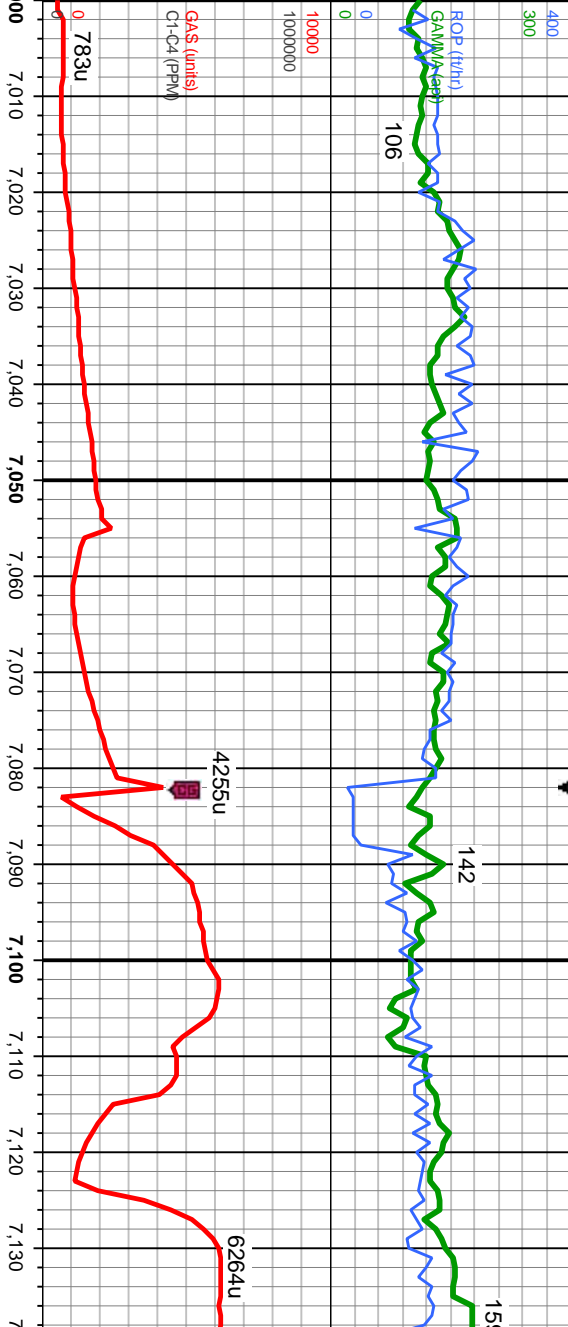
Well Bore
TVD

COLUMBINE LOGGING INC.
RIGGED UP ON 04/27/2014
BEGAN LOGGING ON
04/027/2014 @ 04:10 HRS MST

Oil Show

EGMFTST

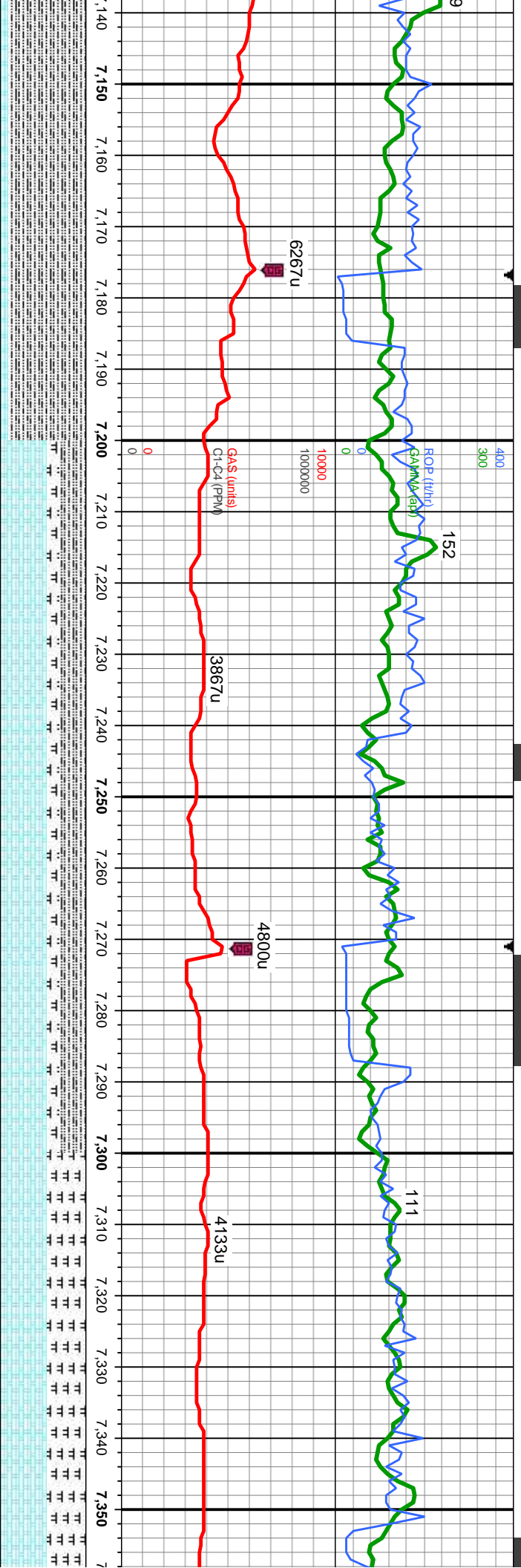
Images



100% SLTY SH: lt-med gy brn, dk gy, mot lp, frm-hd, sb blk-ly-sb ply, silty tex, v sl calc;
OIL SHOW: dim lt yel-gn slow cut, dim yel-gn blotchy ring, no str, no od

100% SLTY SH: lt-med gy brn, s
calc; 10% CHK: lt gy-med gy, wh
SHOW: dim lt gn slow cut, dim y





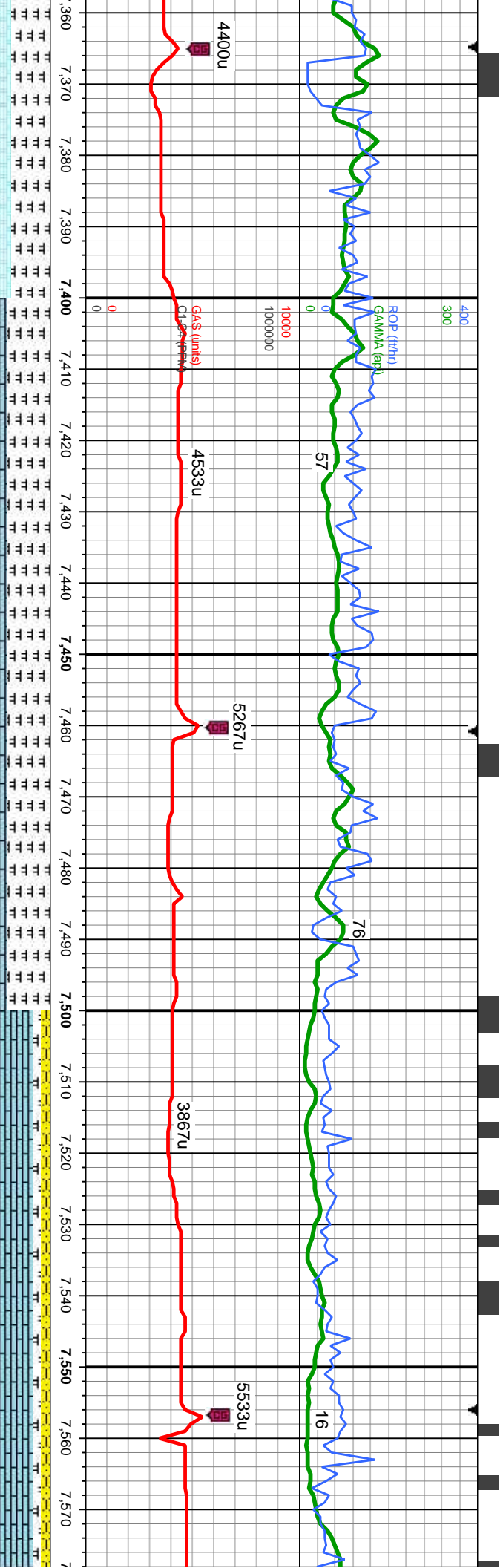
MD: 7,206'
TVD: 6,979.72'
Inclination: 44.1°
Azimuth: 89.7°
VS: -891.01'

MD: 7,300'
TVD: 7,042.7'
Inclination: 51.7°
Azimuth: 89.3°
VS: -821.33'

55% CHK: lt gy-med gy, wh incl, mot ip, blkly - sb pty, rthy tex, frm-fri, v calc: 30%
SLTY SH: lt-med gy brn, sme dk gy, mot ip, stri ip, frm-hd, sb blkly-sb pty, slty tex, sl
calc: 15% MRLST: med-dk gy, mot ip, wh incl, sb blkly- sb pty, rthy tex, frm-hd, abnt
bent, v calc: OIL SHOW: bri bl-wh stmg mlky cut, sme yel min flor, mod bl resd ring,
no od

55% CHK: mot lt-med gy, sb blkly-sb pty, frm-occ t
45% MRLST: dk-med gy brn, mod frm, brit-fri ip, g
OIL SHOW: bri bl-wh stmg mlky cut, abnt yel min h





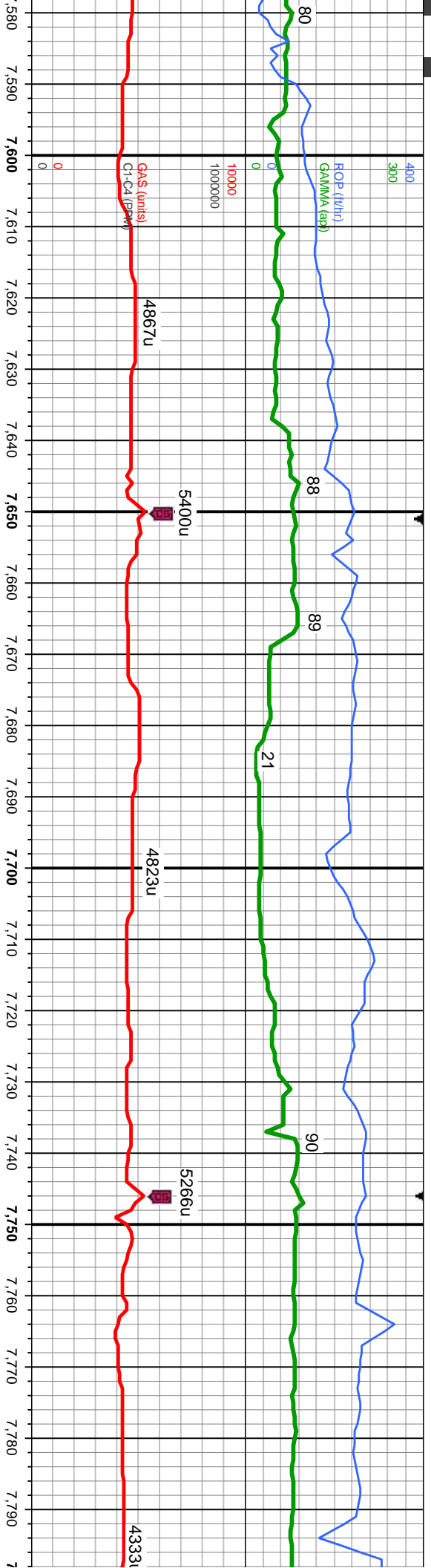
MD: 7,396'
TVD: 7,094.41'
Inclination: 63.0°
Azimuth: 90.6°
VS: -740.63'

MD: 7,491'
TVD: 7,131.12'
Inclination: 71.5°
Azimuth: 92.7°
VS: -653.13'

70% LMST: off wh-bt-lt brn, mot, sb blkly-pty, microxln-crpplx, sm-sily te
10% MRLST: dk-med gy brn, mod frm, brit-frt ip, gt tex, sb pily - sb blkly,
CHK: mot lt-med gy, sb blkly-sb pily, frm-occ brit, rthy tex, sme tr bent, m
SS: dk gy-dk brn, c gr, occ f gr,sb ang-sb md, p-mod srt, frt brit, mod-gd
SHOW: bri gr-yel cut, mod bri gr-yel ring, tr yel mln flr, solid gr-yel res

50% MRLST: dk-med gy brn, mod frm, brit-frt ip, gt tex, sb pily - sb blkly, arg-sily, calc;
40% CHK: mot lt-med gy, sb blkly-sb pily, frm-occ brit, rthy tex, sme tr bent, mtx, v calc;
10% LMST: off wh-bt-lt brn, mot, sb blkly-pty, microxln-crpplx, sm-sily tex, sft-frm, v calc;
OIL SHOW: bri bl-wh string milky cut, sme yel mln flr, mod bl resdl ring, no od





x, sft-firm, v calc;
arg-sily, calc; 10%
x, v calc; 10% SHY
cons, sl calc; OIL
di str, no od

TOOH @ 7655' MD FOR
INTERMEDIATE CASING
17:30 HRS ON 04/27/14
RESUME DRILLING @
10:35 HRS ON 04/29/14

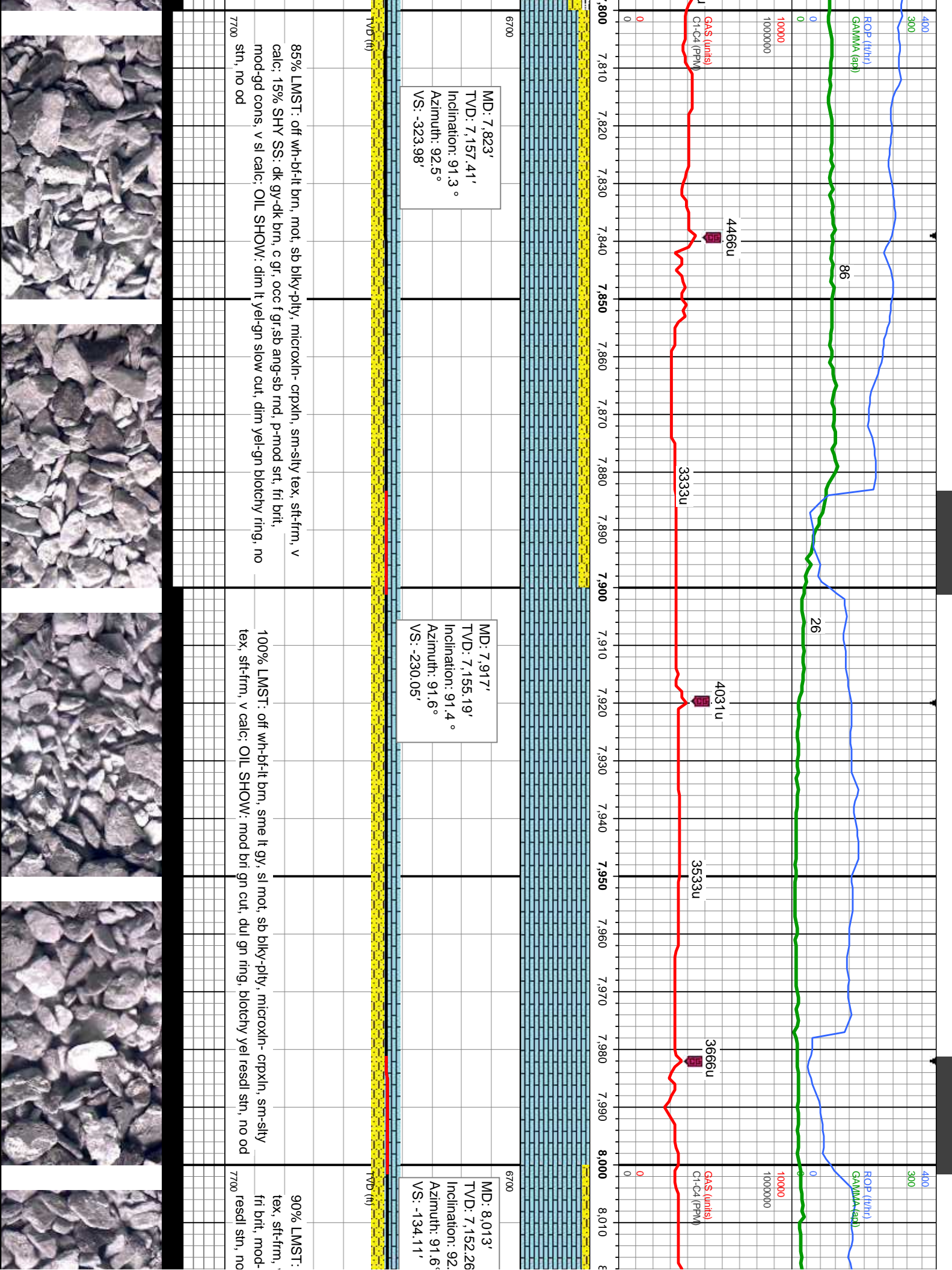
<<TVD SCALE CHANGE>>

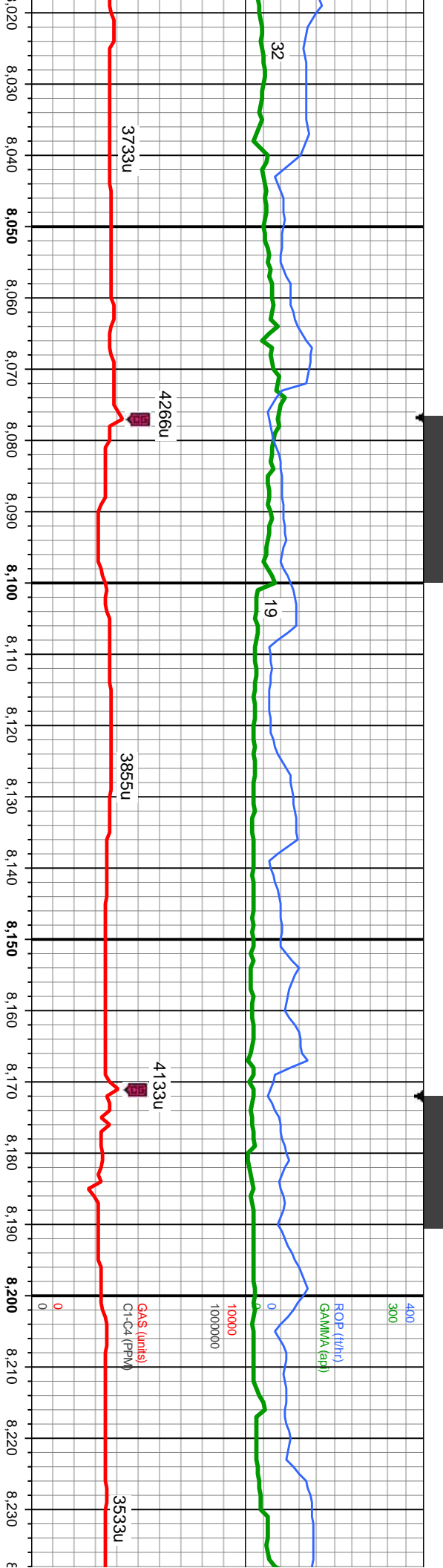
MD: 7,590'
TVD: 7,151.99'
Inclination: 84.1 °
Azimuth: 91.7°
VS: -556.61'

55% LMST: off wh-bf-lt brn, mot, sb blk-y-pty, microxln- crpxln, sm-sily tex, sft-firm, v
calc; 35% SHY SS: dk gy-dk brn, c gr, occ f gr, sb ang-sb rnd, p-mod srt, fri brit, mod-gd
cons, sl calc; 10% SLTY SH:lt-gy gy, sme blk, sb pty-sb blk, frm, rthy lstr, arg-sily, non
calc; OIL SHOW: mod bri gn cut, dul gn ring, blotchy yel resd str, no od

70% LMST: off wh-bf-lt brn, mot, sb blk-y-pty, microxln- crpxln, sm-sily tex, sft-firm, v calc;
20% SHY SS: dk gy-dk brn, c gr, occ f gr, sb ang-sb rnd, p-mod srt, fri brit, mod-gd cons,
sl calc; 10% SLTY SH:lt-gy gy, sme blk, sb pty-sb blk, frm, rthy lstr, arg-sily, non calc;
OIL SHOW: mod bri gn-yel cut, dul gn ring, blotchy yel resd str, no od







1°

MD: 8,107'
TVD: 7,148.9'
Inclination: 92°
Azimuth: 90°
VS: -40.18'

MD: 8,202'
TVD: 7,147.74'
Inclination: 89.4°
Azimuth: 89.9°
VS: 54.8'



off wh-bf-it brn, sme lt gy, sl mot, sb blkly-plty, microxln- crpxln, sm-sily
v calc; 10% SHY SS; dk gy-dk brn, c gr, occ f gr,sb ang-sb md, p-mod srt,
gd cons, sl calc; OIL SHOW: mod bri gn cut, dul gn ring, blotchy yel
od

100% LMST: off wh-bf-it brn, sme lt gy, sl mot, sb blkly-plty, microxln- crpxln, sm-sily
tex, sft-frm, v calc; OIL SHOW: mod bri gn cut, dul gn ring, blotchy yel resd stn, no od;
OIL SHOW: mod bri gn cut, dul gn ring, blotchy yel resd stn, no od

7700



960

<<ROP SCALE CHANGE>>

GAS/MK (pp)

0

10000

1000000

GAS (units)
C1-C4 (PPM)

4733

3866u

4432u

3536u

4333u

29

47

81

8,240 8,250 8,260 8,270 8,280 8,290 8,300 8,310 8,320 8,330 8,340 8,350 8,360 8,370 8,380 8,390 8,400 8,410 8,420 8,430 8,440 8,450

6700

MD: 8,297'
TVD: 7,149.56'
Inclination: 88.4 °
Azimuth: 89.3°
VS: 149.78'

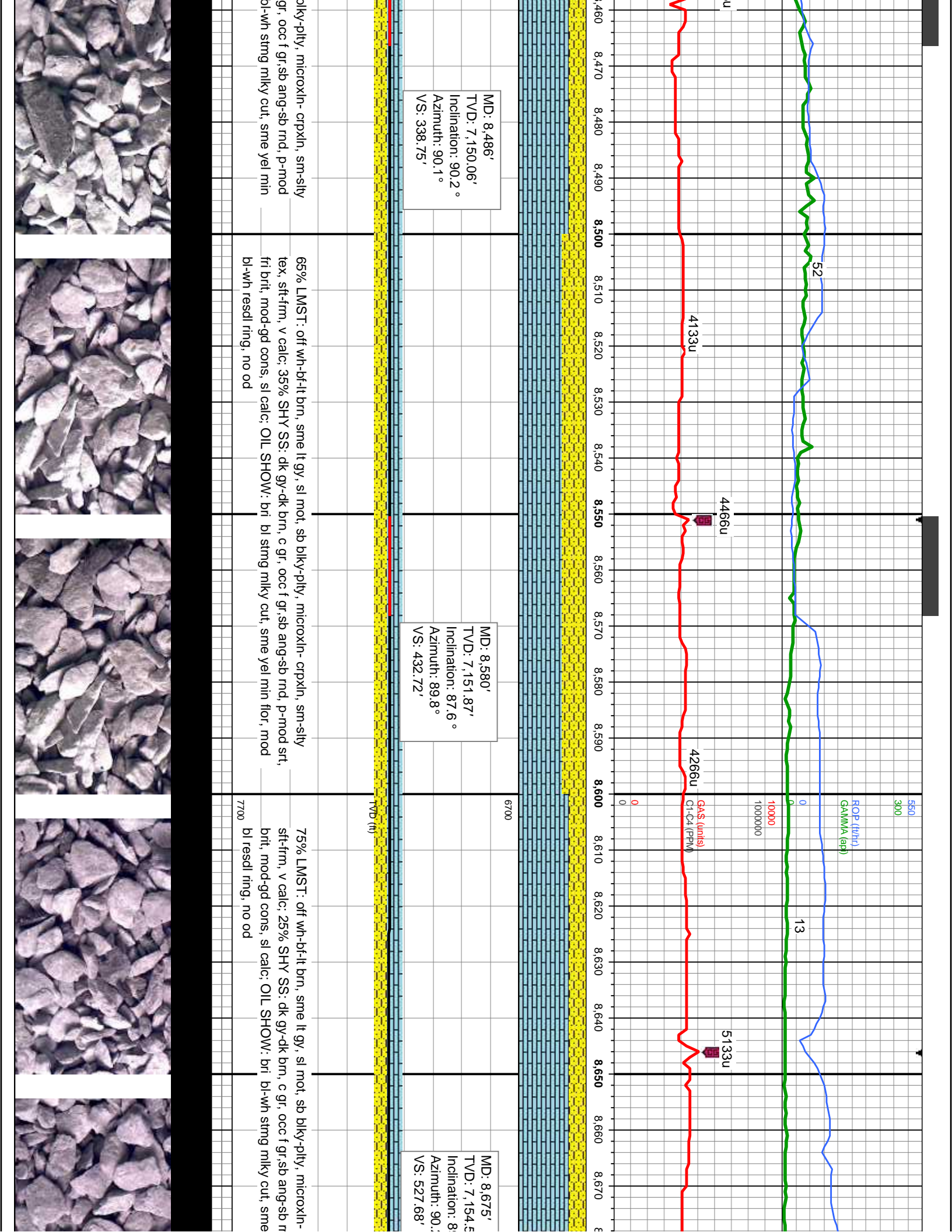
MD: 8,392'
TVD: 7,150.56'
Inclination: 90.4 °
Azimuth: 89.6°
VS: 244.75'

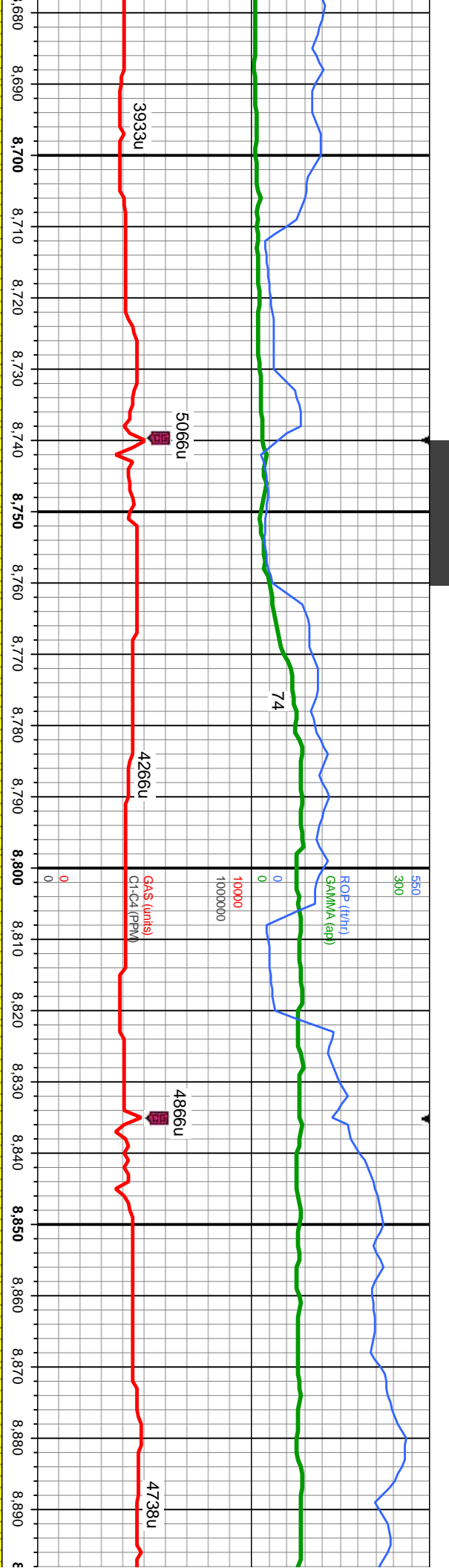
TVD (ft)

80% LMST: off wh-bl-ft brn, sme lt gy, sl mot, sb blkly-pty, microxln- crpxln, sm-sily
sft-frm, v calc; 10% SHY SS: dk gy-dk brn, c-med gr, occ f gr, sb ang-sb mnd, p-mod
srt, fri brt, mod-gd cons, non- v sl calc; 10% SLTY SH:lt-gy gy, sme blk, sb ply-sb blkly,
frm, rthy lstr, arg-sily, non calc; OIL SHOW: bri bl-wh stmg mlky cut, sme yel min
flor, mod bl resdl ring, no od

75% LMST: off wh-bl-ft brn, sme lt gy, sl mot, sb l
tex, sft-frm, v calc; 25% SHY SS: dk gy-dk brn, c
srt, fri brt, mod-gd cons, sl calc; OIL SHOW: bri
flor, mod bl resdl ring, no od







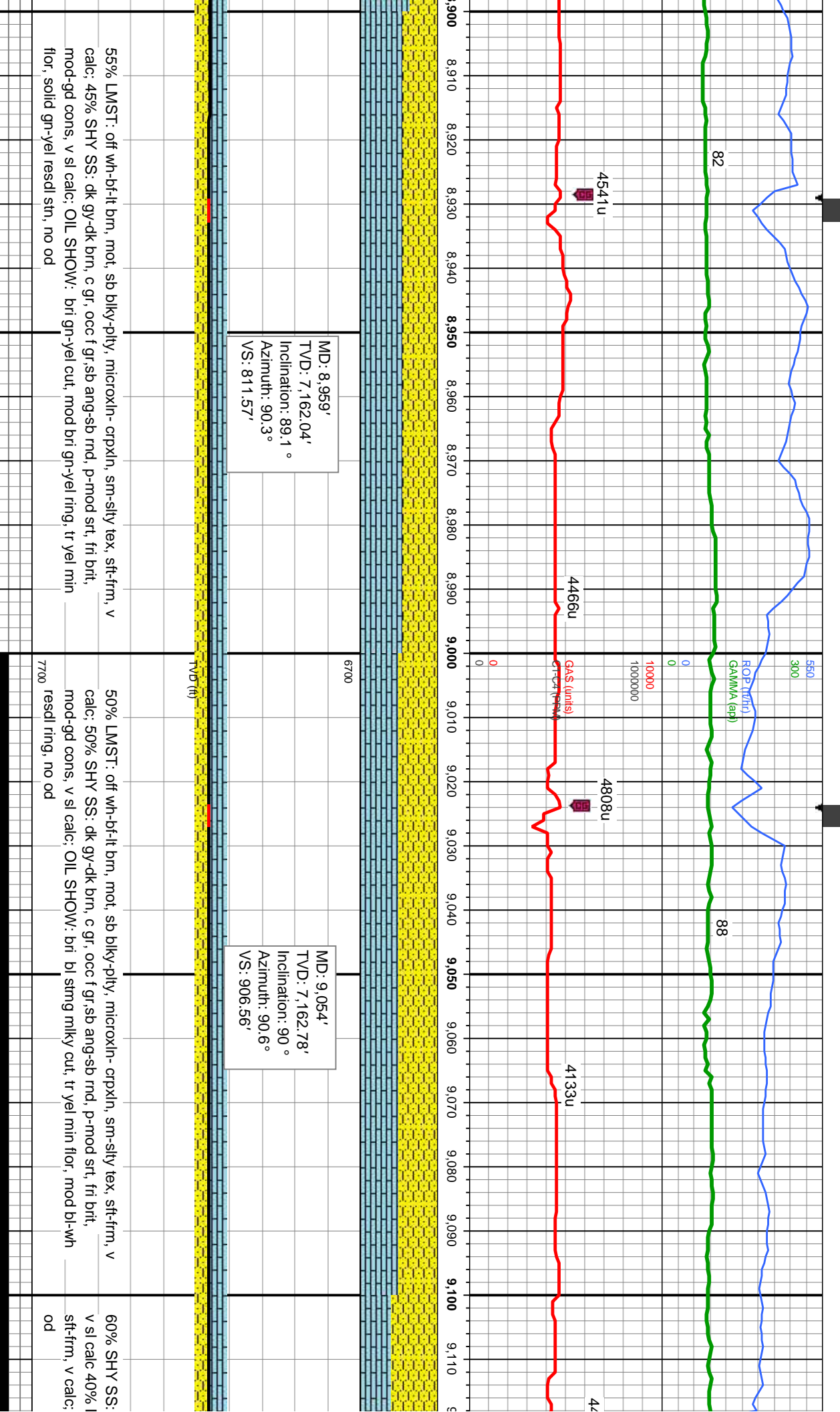
MD: 8,769'
TVD: 7,156.49'
Inclination: 88.4 °
Azimuth: 91.2 °
VS: 621.65'

MD: 8,863'
TVD: 7,159.52'
Inclination: 87.9 °
Azimuth: 90.3 °
VS: 715.6'

65% LMST: oft wh-br-it brn, sme lt gy, sl mot, sb blk-y-ply, microxln- cpxln, sm-sily tex, sft-firm, v calc; 35% SHY SS: dk gy-dk brn, c gr, occ f gr, sb ang-sb rnd, p-mod srt, fri brit, mod-gd cons, sl calc; OIL SHOW: bri bl-wh stmg milky cut, sme yel min flor, mod bl resdl ring, no od

65% LMST: oft wh-br-it brn, mot, sb blk-y-ply, microxln- cpxln, sm-sily tex, sft-firm, v calc; 35% SHY SS: dk gy-dk brn, c gr, occ f gr, sb ang-sb rnd, p-mod srt, fri brit, mod-gd cons, v sl calc; OIL SHOW: bri gn-yel cut, mod bri gn-yel ring, tr yel min flor, solid gn-yel resdl stn, no od



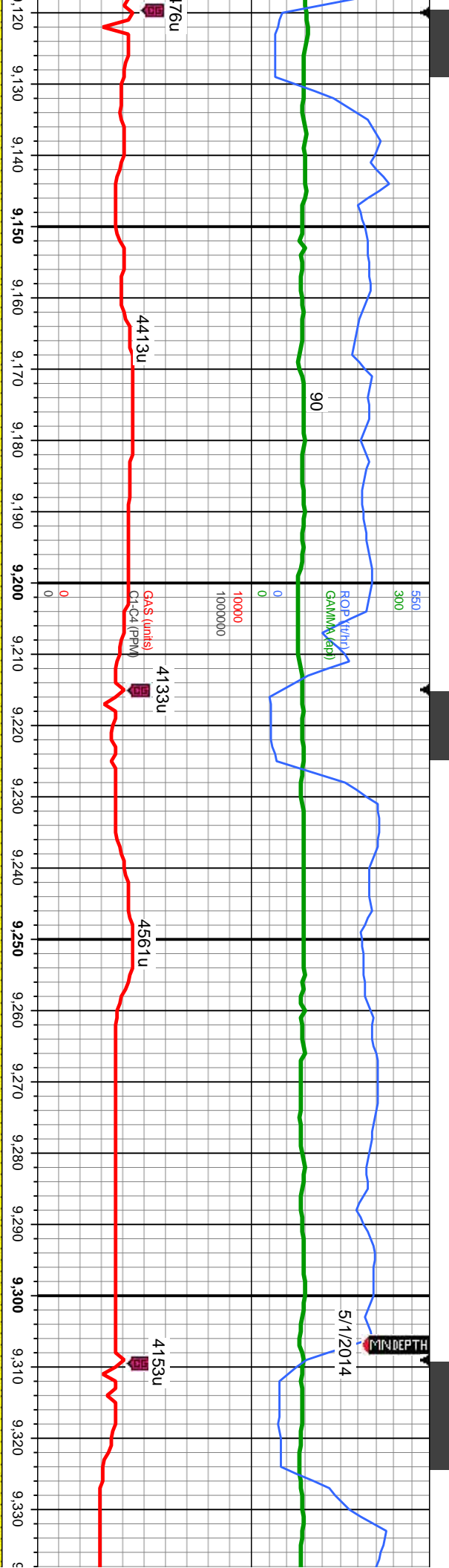


55% LMST: off wh-bt-lt brn, mot, sb blk-y-pily, microxln- crpxln, sm-sily tex, sft-frm, v calc; 45% SHY SS: dk gy-dk brn, c gr, occ f gr, sb ang-sb rnd, p-mod srt, fri brit, mod-gd cons, v sl calc; OIL SHOW: bri gn-yel cut, mod bri gn-yel ring, tr yel mln flr, solid gn-yel resdl stn, no od

50% LMST: off wh-bt-lt brn, mot, sb blk-y-pily, microxln- crpxln, sm-sily tex, sft-frm, v calc; 50% SHY SS: dk gy-dk brn, c gr, occ f gr, sb ang-sb rnd, p-mod srt, fri brit, mod-gd cons, v sl calc; OIL SHOW: bri bl stmg mlky cut, tr yel mln flr, mod bl-wh resdl ring, no od

60% SHY SS: v sl calc 40% l sft-frm, v calc; od





MD: 9,149'
TVD: 7,162.7'
Inclination: 90.1 °
Azimuth: 90.7 °
VS: 1,001.56'

MD: 9,244'
TVD: 7,162.2'
Inclination: 90.5 °
Azimuth: 90.4 °
VS: 1,096.56'

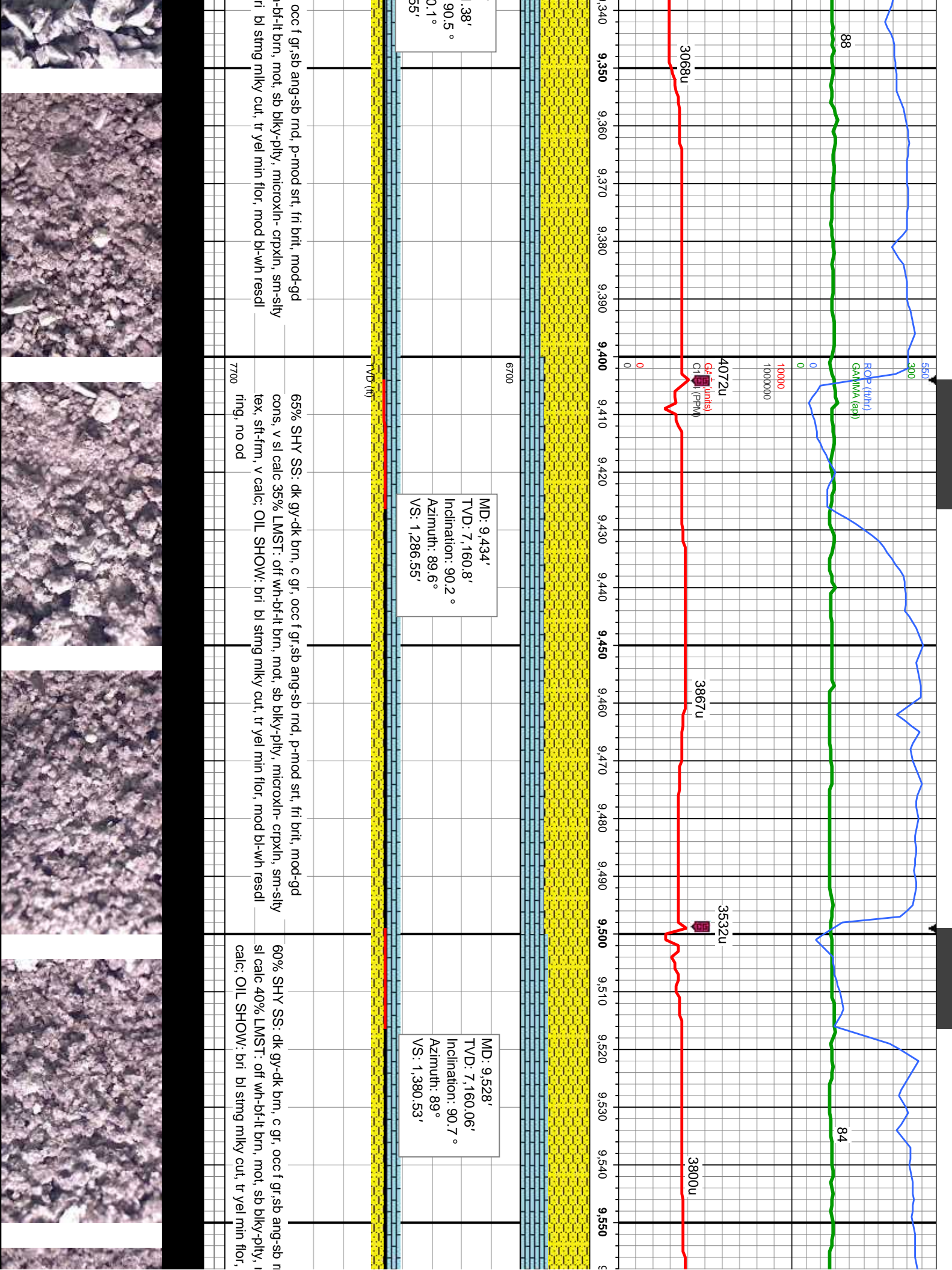
MD: 9,338'
TVD: 7,161'
Inclination: 90.5 °
Azimuth: 90.4 °
VS: 1,190.1'

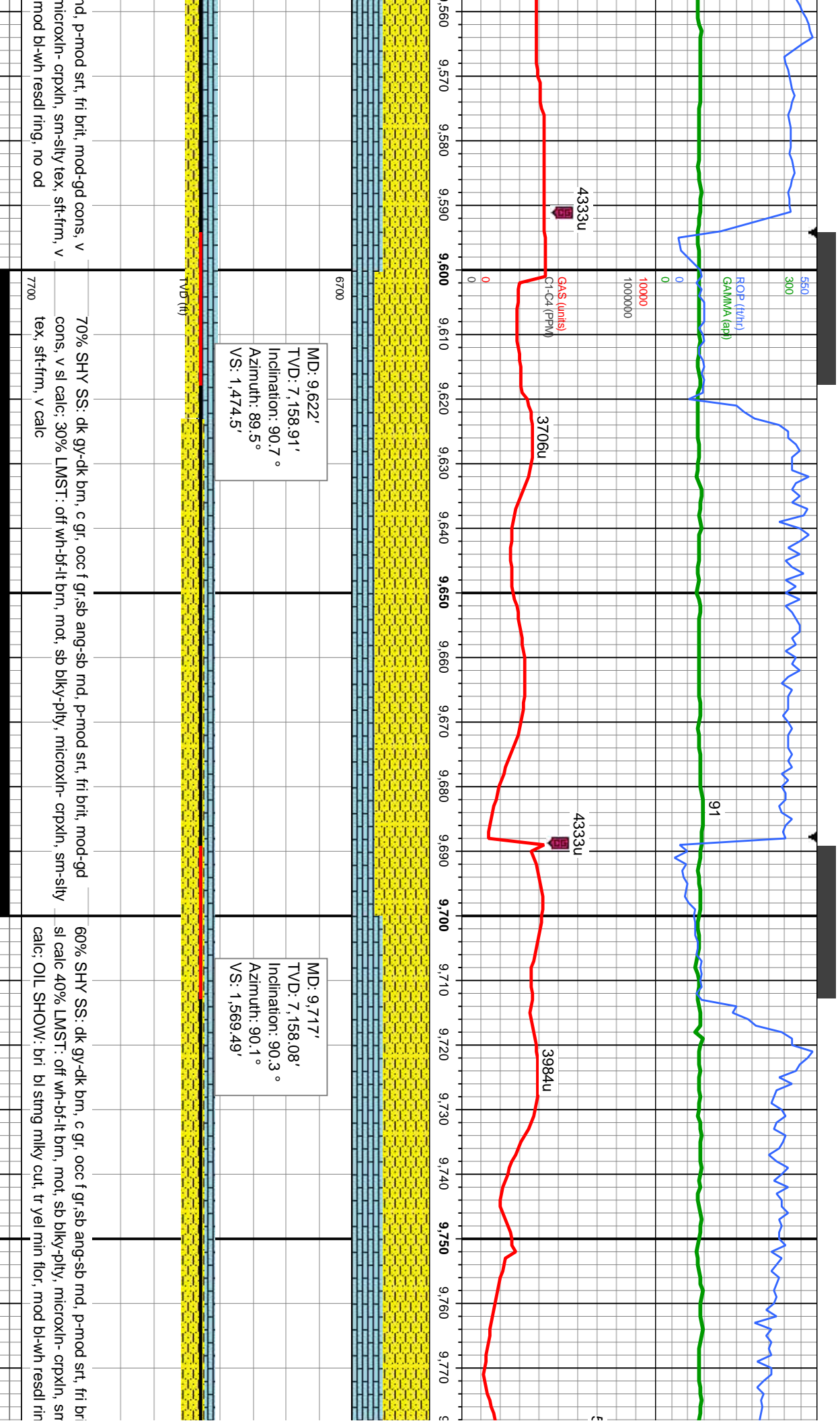
dk gy-dk brn, c gr, occ f gr, sb ang-sb rnd, p-mod srt, fri brit, mod-gd cons, LMST: off wh-bf-lt brn, mot, sb blk-y-pty, microxln- crpxln, sm-sily tex, OIL SHOW: bri bl sting milky cut, tr yel min flor, mod bl-wh resdl ring, no

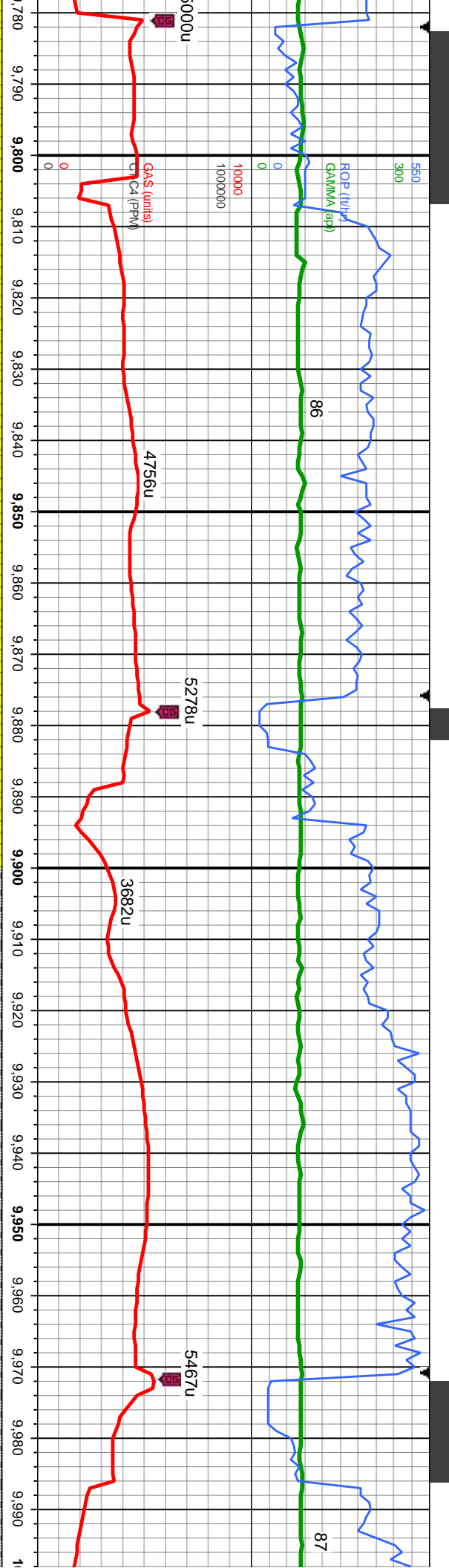
65% SHY SS: dk gy-dk brn, c gr, occ f gr, sb ang-sb rnd, p-mod srt, fri brit, mod-gd cons, v sl calc 35% LMST: off wh-bf-lt brn, mot, sb blk-y-pty, microxln- crpxln, sm-sily tex, sft-frm, v calc; OIL SHOW: bri gn-yel cut, mod bri gn-yel ring, tr yel min flor, solid gn-yel resdl stn, no od

70% SHY SS: dk gy-dk brn, c gr, occ f gr, sb ang-sb rnd, p-mod srt, fri brit, mod-gd cons, v sl calc 30% LMST: off wh-bf-lt brn, mot, sb blk-y-pty, microxln- crpxln, sm-sily tex, sft-frm, v calc; OIL SHOW: bri gn-yel cut, mod bri gn-yel ring, tr yel min flor, solid gn-yel resdl stn, no od









MD: 9,811'
TVD: 7,158.33'
Inclination: 89.4 °
Azimuth: 90.2 °
VS: 1,663.49'

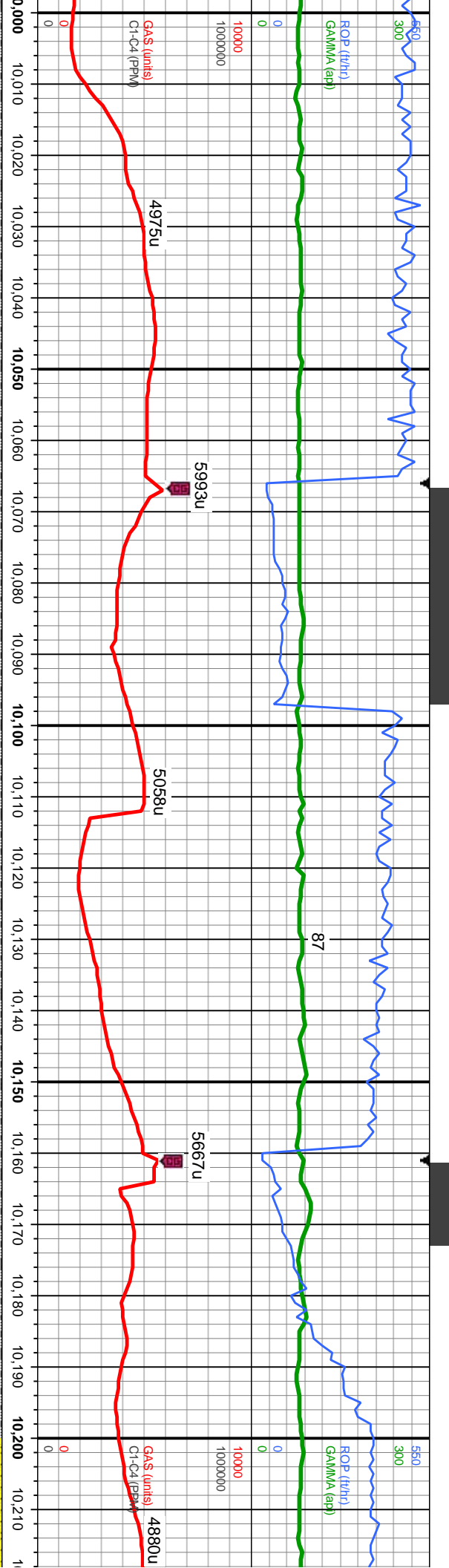
MD: 9,905'
TVD: 7,159.15'
Inclination: 89.6 °
Azimuth: 89.7 °
VS: 1,757.48'

MD: 10,000'
TVD: 7,160.00'
Inclination: 89.7 °
Azimuth: 89.7 °
VS: 1,850.00'

80% SHY SS: dk gy-dk brn, c gr, occ f gr, sb ang-sb rnd, p-mod srt, fri brit, mod-gd cons, v sl calc; 20% LMST: off wh-bf-it brn, sb blk-ly-pily, microxln- cpxln, sm-sily tex, sft-fm, v calc; OIL SHOW: bri lt bl-wh milky string cut, bri wh thk ring, solid bri bl resdl

90% SHY SS: dk gy-dk brn, c gr, occ f gr, sb ang-sb rnd, p-mod srt, fri brit, mod-gd cons, v sl calc; 10% SLTY SH:lt-gy gy, sme blk, sb pily-sb blk, frm, rthy lstr, arg-sily, non calc; OIL SHOW: bri lt bl-wh milky string cut, bri wh thk ring, solid bri bl resdl str, no od

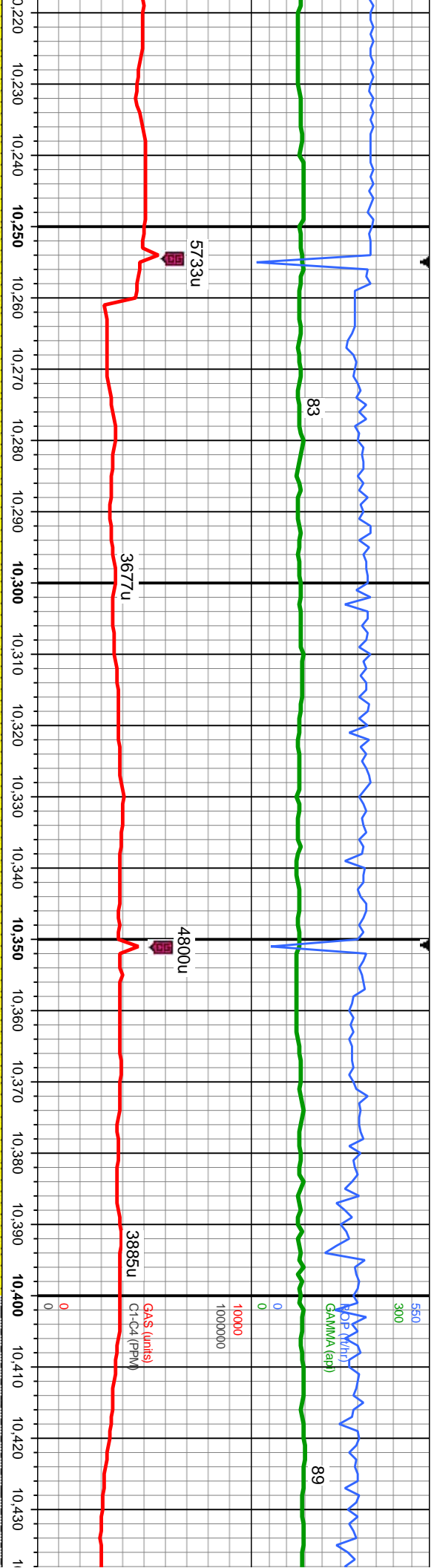




6700	MD: 10,095' TVD: 7,160.14' Inclination: 89.8 ° Azimuth: 90.6 ° VS: 1,947.48'	6700	MD: 10,190' TVD: 7,160.8' Inclination: 89.4 ° Azimuth: 90.3 ° VS: 2,042.47'
------	--	------	---

7700	85% SHY SS: dk gy-dk brn, c gr, occ f gr, sb ang-sb rnd, p-mod srt, fri brit, mod-gd cons, v sl calc; 15% SLTY SH:lt-gy gy, sme blk, sb ply-sb blk, frm, rthy lstr, arg-sily, non calc; OIL SHOW: bri bl string milky cut, tr yel min flor, mod bl-wh resd ring, no od	7700	85% SHY SS: dk gy-dk brn, c gr, occ f gr, sb ang-sb rnd, p-mod srt, fri brit, mod-gd cons, v sl calc; 15% SLTY SH:lt-gy gy, sme blk, sb ply-sb blk, frm, rthy lstr, arg-sily, non calc; OIL SHOW: bri bl string milky cut, tr yel min flor, mod bl-wh resd ring, no od
------	--	------	--





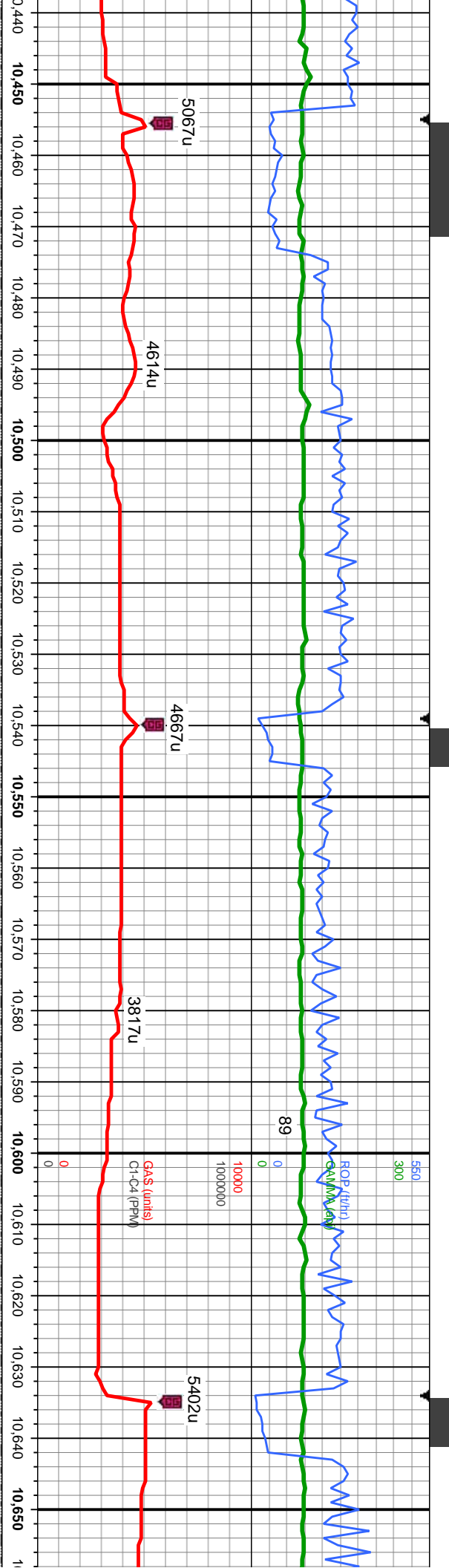
MD: 10,285'
TVD: 7,161.22'
Inclination: 90.1°
Azimuth: 90.1°
VS: 2,137.47'

MD: 10,380'
TVD: 7,160.56'
Inclination: 90.7°
Azimuth: 90.3°
VS: 2,232.47'

SS: dk gy-dk brn, c gr, occ f gr, sb ang-sb rnd, p-mod srt, fri brit, mod-gd
OIL SHOW: bri lt bl-wh milky stmg cut, bri wh thk ring, solid bri bl
100% SHY SS: dk gy-dk brn, c gr, occ f gr, sb ang-sb rnd, p-mod srt, fri brit, mod-gd
cons, v sl calc: OIL SHOW: bri lt bl-wh milky stmg cut, bri wh thk ring, solid bri bl
resd stn, no od

90% SHY SS: dk gy-dk brn, c gr, occ f gr, sb ang-sb rnd, p-mod srt, fri brit, mod-gd
cons, v sl calc: 10% SLTY SH:
non calc: OIL SHOW: bri lt bl-wh milky stmg cut, bri wh thk ring, solid bri bl





MD: 10,474'
TVD: 7,160.31'
Inclination: 89.6 °
Azimuth: 90.9 °
VS: 2,326.47'

MD: 10,568'
TVD: 7,161.62'
Inclination: 88.8 °
Azimuth: 89.9 °
VS: 2,420.46'

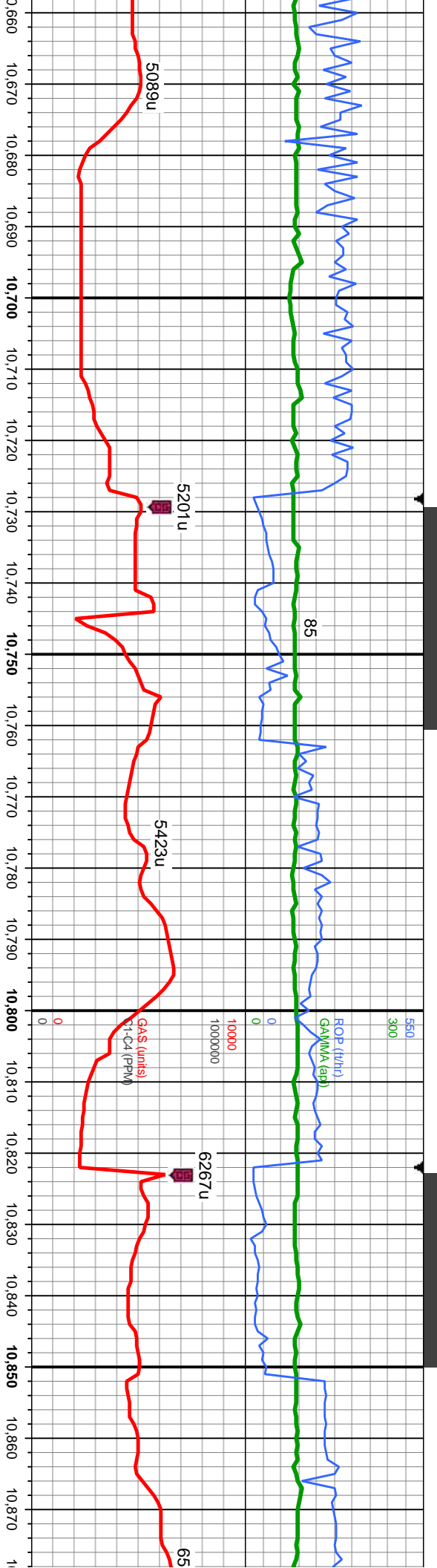
MD: 10,650'
TVD: 7,161.62'
Inclination: 88.8 °
Azimuth: 89.9 °
VS: 2,420.46'

occ f gr, sb ang-sb rnd, p-mod srt, fri brit, mod-gd
it-gy gy, sme blk, sb ply-sb blk, frm, rthy lstr, arg-slt, arg-slt, tr yel min flor, mod bl-wh resd ring, no od

90% SHY SS: dk gy-dk brn, c gr, occ f gr, sb ang-sb rnd, p-mod srt, fri brit, mod-gd
cons, v sl calc; 10% SLTY SH:lt-gy gy, sme blk, sb ply-sb blk, frm, rthy lstr, arg-slt, non calc; OIL SHOW: bri lt bl-wh mlky stmg cut, bri wh thk ring, solid bri bl resd stn, no od

85% SHY SS: dk gy-dk brn, c gr, occ f gr, sb ang-sb rnd, p-mod srt, fri brit, mod-gd
cons, v sl calc; 15% SLTY SH:lt-gy gy, sme blk, sb ply-sb blk, frm, rthy lstr, arg-slt, non calc; OIL SHOW: bri bl stmg mlky cut, tr yel min flor, mod bl-wh resd ring, no od

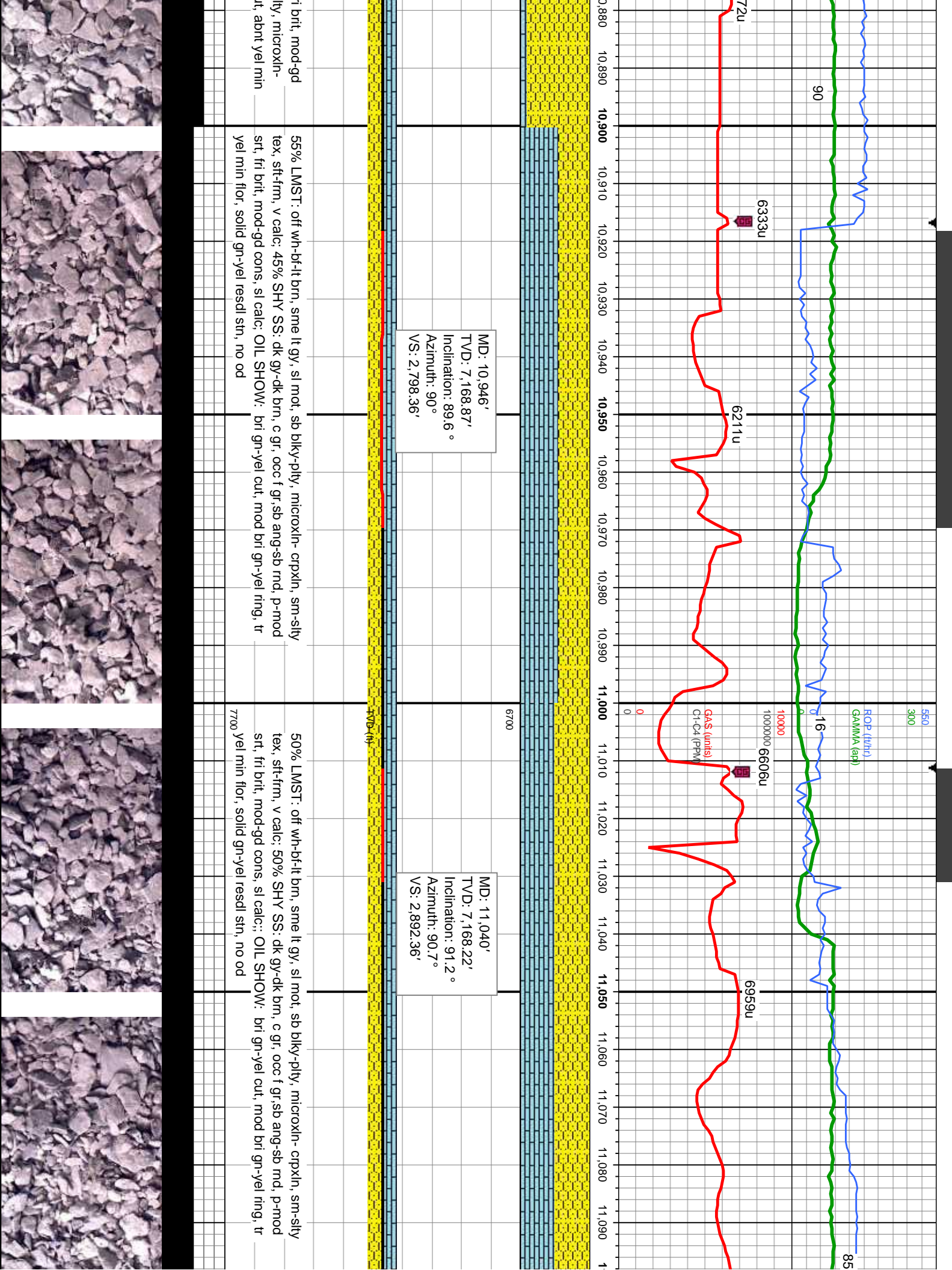


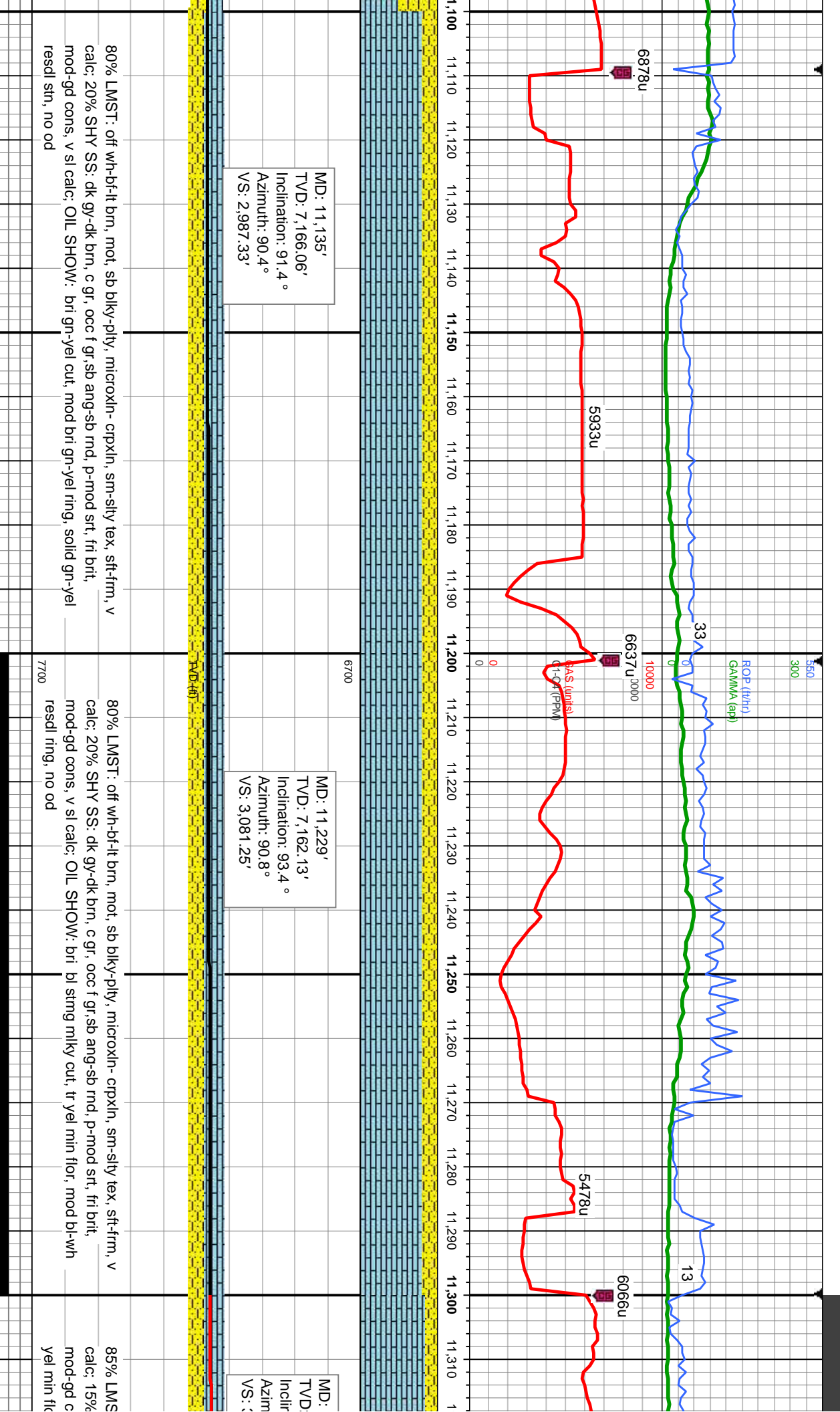


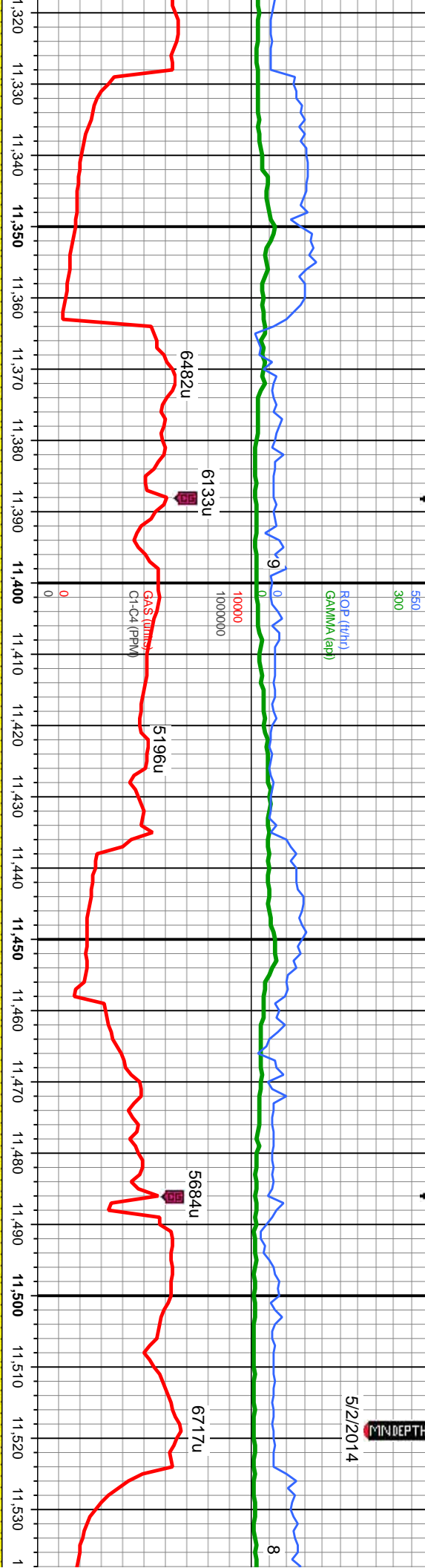
MD: 10,662'
TV: 163.67'
Inclination: 88.7°
Azimuth: 89.7°
VS: 2,703.38'

85% SHY SS: dk gy-dk brn, c gr, occ f gr, sb ang-sb rnd, p-mod srt, fri brit, mod-gd cons, v sl calc; 15% SLTY SH:lt-gy gy, sme blk, sb ply-sb blkly, frm, rthy lstr, arg-silty, non calc; OIL SHOW: bri bl mlky cut, tr yel min flor, mod br-wh resdl ring, no od









11,323'
7,156.47'
ation: 93.5 °
uth: 90.4 °
3,175.07'

MD: 11,417'
TVD: 7,152.04'
Inclination: 91.9 °
Azimuth: 89.2 °
VS: 3,268.96'

MD: 11,512'
TVD: 7,150.22'
Inclination: 90.3 °
Azimuth: 90.1 °
VS: 3,366.38'

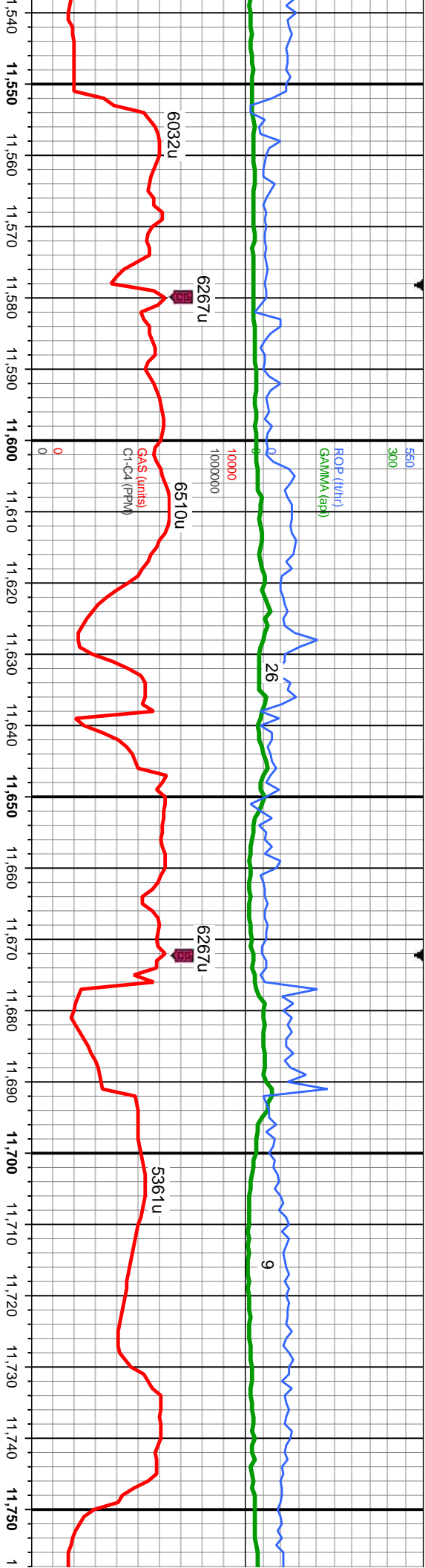
11,320	11,330	11,340	11,350	11,360	11,370	11,380	11,390	11,400	11,410	11,420	11,430	11,440	11,450	11,460	11,470	11,480	11,490	11,500	11,510	11,520	11,530
TVD (#)																					
11,323'																					
7,156.47'																					
ation: 93.5 °																					
uth: 90.4 °																					
3,175.07'																					
11,320																					
11,330																					
11,340																					
11,350																					
11,360																					
11,370																					
11,380																					
11,390																					
11,400																					
11,410																					
11,420																					
11,430																					
11,440																					
11,450																					
11,460																					
11,470																					
11,480																					
11,490																					
11,500																					
11,510																					
11,520																					
11,530																					

11,320
11,330
11,340
11,350
11,360
11,370
11,380
11,390
11,400
11,410
11,420
11,430
11,440
11,450
11,460
11,470
11,480
11,490
11,500
11,510
11,520
11,530

80% LMST: off wh-bf-it brn, mot, sb blk-y-ply, microxln- cpxln, sm-sily tex, stf-frm, v
calc; 20% SHY SS: dk gy-dk brn, c gr, occ f gr,sb ang-sb rnd, p-mod srt, fri brti,
mod-gd cons, v sl calc, tr fos frag; OIL SHOW: bri gn-yel cut, mod bri gn-yel ring, tr
yel min flor, solid gn-yel resdl stn, no od

75% LMST: off wh-bf-it brn, mot, s
25% SHY SS: dk gy-dk brn, c gr, c
v sl calc, tr fos frag; OIL SHOW: b
ring, no od



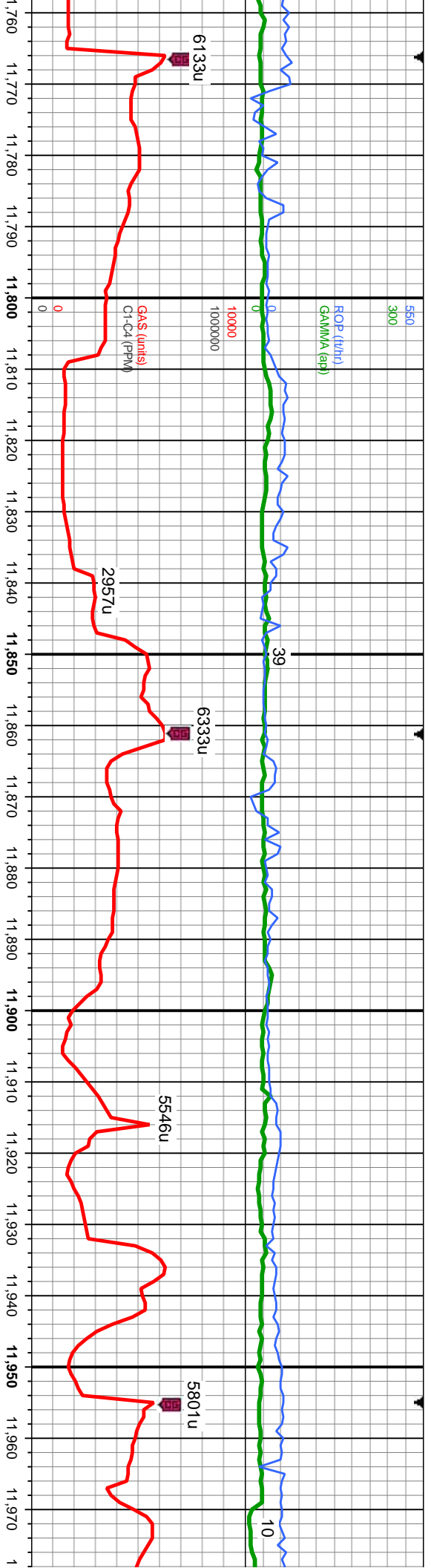


MD: 11,607'
TVD: 7,150.38'
Inclination: 89.5 °
Azimuth: 91.1 °
VS: 3,458.93'

MD: 11,701'
TVD: 7,150.55'
Inclination: 90.3 °
Azimuth: 90.3 °
VS: 3,552.93'

db blkly-plty, microxln- crpxln, sm-sily tex, sft-frm, v calc:	80% LMST: off wh-bl-ft brn, mot, sb blkly-plty, microxln- crpxln, sm-sily tex, sft-frm, v calc:
occ f gr,sb ang-sb rnd, p-mod srt, fri brit, mod-gd cons,	20% SHY SS: dk gy-dk brn, c gr, occ f gr,sb ang-sb rnd, p-mod srt, fri brit, mod-gd cons,
v sl stmg mlky cut, tr yel min flor, mod bl-wh resd	v sl calc; OIL SHOW: bri bl stmg mlky cut, tr yel min flor, mod bl-wh resd ring, no od
7700	





MD: 11,795'
TVD: 7,149.73'
Inclination: 90.7°
Azimuth: 90.1°
VS: 3,646.92'

MD: 11,890'
TVD: 7,150.97'
Inclination: 87.8°
Azimuth: 89.7°
VS: 3,741.9'

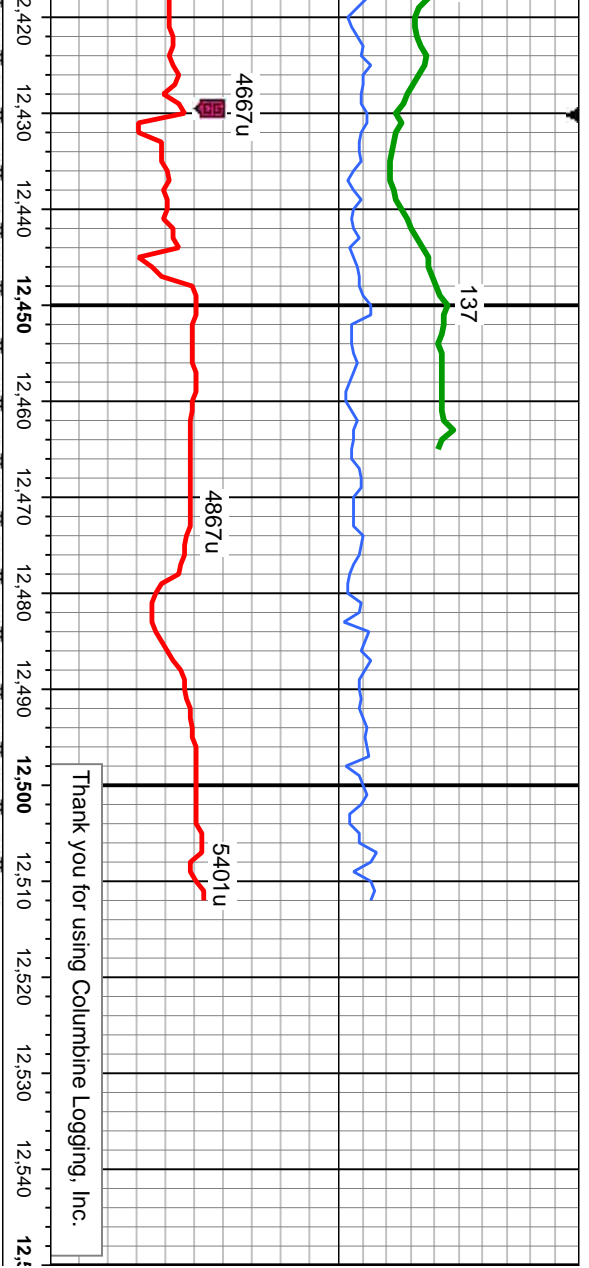
MC
TV
Inc
Azi
VS

n- cpxln, sm-sily tex, sft-fm, v calc;
nd, p-mod srt, fri brit, mod-gd cons,
-wh resdl ring, no od

90% LMST: off wh-br-lt brn, mot, sb blk-y-ply, microxln- cpxln, sm-sily tex, sft-fm, v
calc; 10% SHY SS: dk gy-dk brn, c gr, occ f gr, sb ang-sb rnd, p-mod srt, fri brit,
mod-gd cons, sl calc, tr wh inoc foss; OIL SHOW: bri gn-yel cut, mod bri gn-yel ring,
tr yel min flwr, solid gn-yel resdl stn, no od

100% LMST: off wh-br-lt brn, mot, sb blk-y-ply, microxln- cpxln, sm-sily
OIL SHOW: mod bri gn cut, dul gn ring, blotchy yel resdl stn, no od





12,420 12,430 12,440 12,450 12,460 12,470 12,480 12,490 12,500 12,510 12,520 12,530 12,540 12,550

MD: 12,446'
TV/D: 7,156.54'
Inclination: 91.6°
Azimuth: 90.2°
VS: 4,297.78'

MD: 12,512'
TV/D: 7,154.7'
Inclination: 91.6°
Azimuth: 90.2°
VS: 4,366.2'

TD @ 12512' MD @ 09:54
HRS MST on 5/2/14

T: dk-med gy brn, mod frm, brit-fri ip, gt tex, sb ply - sb blk, arg-sily, calc: 45% LMST: off
, mot, sb blk-ply, microxln- crpxln, sm-sily tex, stf-fm, v calc: OIL SHOW: bri gn-yel cut,
yel ring, tr yel min flr, solid gn-yel resd stn, no od

