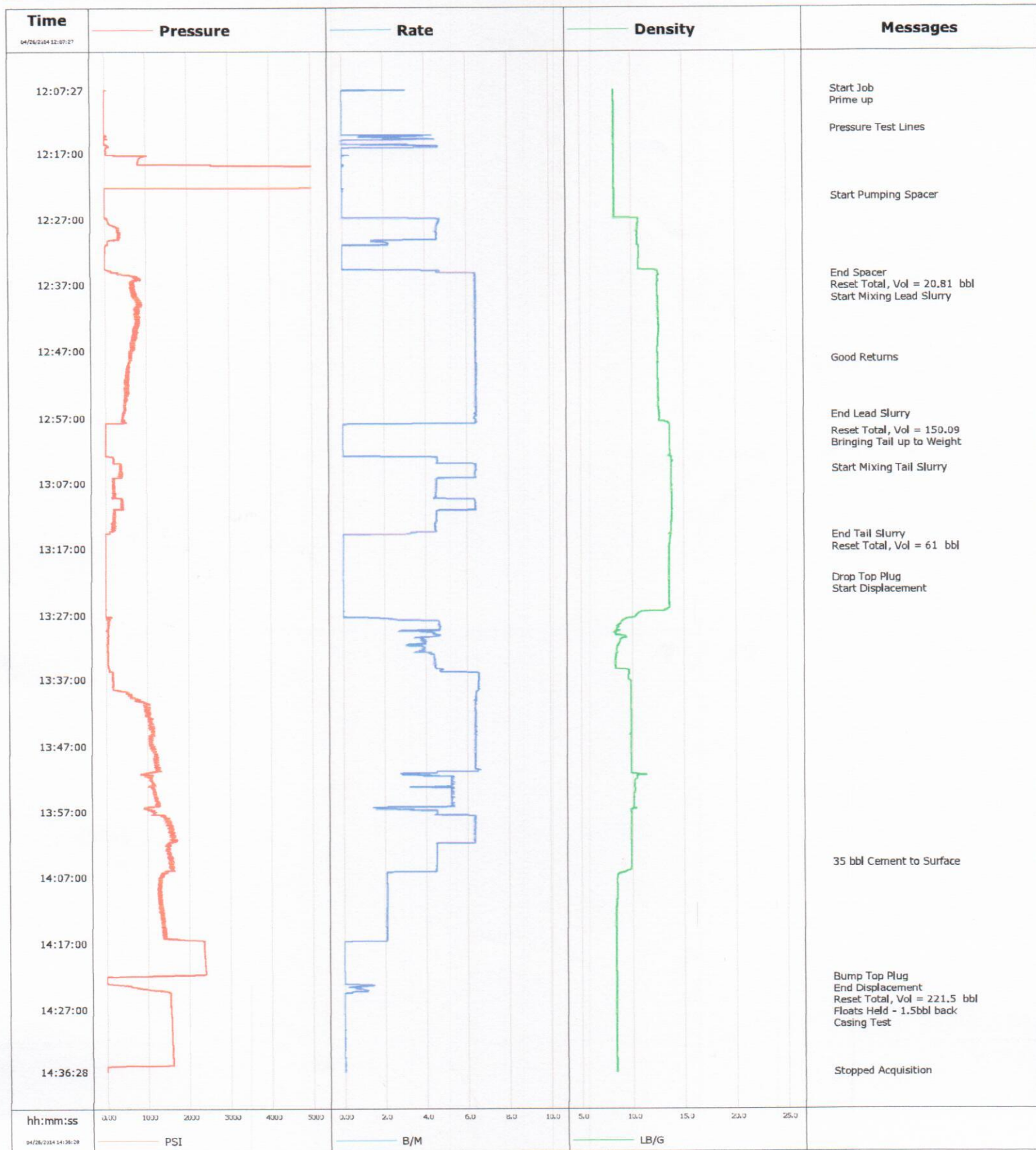


Well Razor Fed 26J-3511A
Field Wattenberg
Engineer Michael Simon/ K Sovereign
Country United States

Client Whiting
SIR No. COUS-00652
Job Type 7 Intermediate
Job Date 04-26-2014



Cementing Service Report

Customer						Whiting		Job Number COUS-00652									
Well Razor Fed 26J-3511A 26J-3511A							Location (legal) Cheyenne		Schlumberger Location Rock Springs		Job Start Apr/26/2014						
Field Wattenberg			Formation Name/Type			Deviation		Bit Size 8.8 in		Well ND 6024.3 ft		Well TVD					
County Weld			State/Province Colorado			BNP		BHST 86 degF		BHCT 148 degF		Pore Press. Gradient					
Well Master			API/UWI														
Rig Name Xtreme 18		Drilled For Oil & Gas		Service Via Land		Casing/Liner											
						Depth, ft		Size, in		Weight, lb/ft		Grade		Thread			
Offshore Zone		Well Class New		Well Type Development		6024.3		7.000		29.0		N80		8RD			
						0.0		0.000		0.0							
Drilling Fluid Type			Max. Density		Plastic Viscosity		Tubing/Drill Pipe										
							Depth,		Size,		Weight,		Grade		Thread		
Service Line Cementing			Job Type 7 Intermediate														
Max. Allowed Tub. Press 4000 psi			Max. Allowed Ann. Press		WH Connection Single Cement head		Perforations/Open Hole										
							Top,		Bottom,				No. of Shots		Total Interval		
Service Instructions															Diameter		
							Treat Down Casing		Displacement 221.5 bbl		Packer Type		Packer Depth				
							Tubing Vol.		Casing Vol. 223.8 bbl		Annular Vol. 166.0 bbl		Openhole Vol. 394.0 bbl				
Casing/Tubing Secured <input checked="" type="checkbox"/>			1 Hole Vol. Circulated prior to Cement <input checked="" type="checkbox"/>			Casing Tools				Squeeze Job							
Lift Pressure						Shoe Type				Squeeze Type							
Pipe Rotated <input type="checkbox"/> Pipe Reciprocated <input type="checkbox"/>						Shoe Depth				Tool Type							
No. Centralizers			Top Plugs 1 Bottom Plugs			Stage Tool Type				Tool Depth							
Cement Head Type						Stage Tool Depth				Tail Pipe Size							
Job Scheduled For Apr/26/2014			Arrived on Location Apr/26/2014			Leave Location Apr/26/2014			Collar Type				Tail Pipe Depth				
									Collar Depth				Sqz. Total Vol.				
Date	Time 24-hr clock	Treating Pressure PSI	Flow Rate B/M	Density LB/G	Volume BBL	Stage BBL	Message										
04/26/2014	12:02:28						Started Acquisition										
04/26/2014	12:07:37	2	0.0	8.34	0.3	0.3	Start Job										
04/26/2014	12:09:29	58	9.8	8.34	0.3	0.3											
04/26/2014	12:11:39	7	0.0	8.34	0.3	0.3	Prime up										
04/26/2014	12:13:26						Pressure Test Lines										
04/26/2014	12:13:26	3	0.0	8.33	0.3	0.3											
04/26/2014	12:14:28	4	1.6	8.33	1.2	1.2											
04/26/2014	12:17:28	985	0.0	8.34	4.9	4.9											
04/26/2014	12:20:28	5518	0.0	8.34	4.9	4.9											
04/26/2014	12:23:28	8	0.0	8.34	4.9	4.9											
04/26/2014	12:23:39						Start Pumping Spacer										
04/26/2014	12:23:39	8	0.0	8.34	4.9	4.9											
04/26/2014	12:26:28	10	0.0	8.34	5.0	5.0											
04/26/2014	12:29:28	324	4.6	10.58	16.9	16.9											
04/26/2014	12:32:28	11	0.0	10.72	22.1	22.1											
04/26/2014	12:35:28						End Spacer										
04/26/2014	12:35:28	427	6.5	12.63	25.7	25.7											
04/26/2014	12:35:29						Reset Total, Vol = 20.81 bbl										