

| | | | |
|-----------|--------------------------|-----------|--|
| Location: | COLORADO | Slot: | SLOT#33 BAREFOOT 32N-25HZ (2019'FSL & 470'FEL, SEC.25) |
| Field: | WELD COUNTY (KERR MCGEE) | Well: | BAREFOOT 32N-25HZ |
| Facility: | SEC.25-T3N-R68W | Wellbore: | BAREFOOT 32N-25HZ PWB |

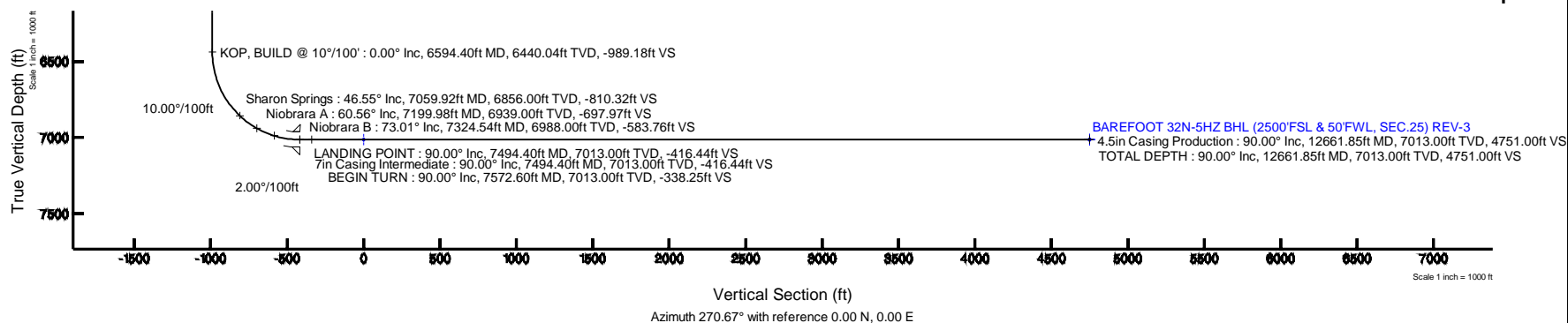
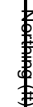
| | |
|---|---|
| True vertical depths are referenced to XTREME II (17K3) (RWB) | Grid System NAD83 / Lambert Colorado SP, Northern Zone (501), US feet |
| Measured depths are referenced to XTREME II (17K3) (RWB) | North Reference: True north |
| XTREME II (17K3) (RWB) to Mean Sea Level: 4888 feet | Scale: True distance |
| Mean Sea Level to Mud line (A1 Slo: SLO7333 BAREFOOT 32N 2542' (2019PSL & 470FBL SEC25): 0 feet | Depths are in feet |
| Coordinates are in feet referenced to Slo: | Created by: csc@com on 20/Jan/2014 |

| Facility Name | | Grid East (E2 F1) | Grid North (N2 F1) | Latitude | Longitude |
|---|--------------|-------------------|--------------------|--|-------------------------------|
| SEC 25-T2N-R66W | | | | | |
| Site | Local N (F1) | Local E (F1) | Grid East (N2 F1) | Grid North (N2 F1) <td>Latitude Longitude</td> | Latitude Longitude |
| SL07K42 (R08) to 32N-29H2 (219YF3) & 47YF6L SEC 25 | -1064.50 | 1029.69 | 3154269.570 | 1316218.620 | 42°12'20.287N 104°36'30.100W |
| SL07K43 (R08) to Main line (N St) SL07K34 47YF6F3, 47YF6F4, 47YF6F5, SEC 20 | | 1029.69 | 3154689.680 | 1314566.226 | 42°11'41.4367N 104°36'36.442W |
| SL07K44 (R08) to Main line (N St) SL07K34 47YF6F3, 47YF6F4, 47YF6F5, SEC 20 | | | | | 458901 |
| SL07K45 (R08) to Main line (N St) SL07K34 47YF6F3, 47YF6F4, 47YF6F5, SEC 20 | | | | | 051 |
| SL07K46 (R08) to Main line (N St) SL07K34 47YF6F3, 47YF6F4, 47YF6F5, SEC 20 | | | | | 458901 |

| Start MD (ft) | End MD (ft) | Tool | Model | Log Name/Comment | Wellbore |
|---------------|-------------|---------------------------|--------------------------------------|------------------|-----------------------|
| 17.00 | 1663.00 | Generic gyro - continuous | Generic gyro - continuous (Standard) | | BAREFOOT 32N-25HZ AWB |
| 1663.00 | 7494.40 | NavTrak | NavTrak (IFR) | | BAREFOOT 32N-25HZ CWB |
| 7494.40 | 12661.85 | NavTrak | NavTrak (IFR) | | BAREFOOT 32N-25HZ PIB |

| Design Comment | MD (ft) | Inc (") | Az (") | TVD (ft) | Local N (ft) | Local E (ft) | DLS (°/100ft) | VS (ft) |
|-----------------------|----------|---------|---------|----------|--------------|--------------|---------------|---------|
| TIE-INTO GYRO SURVEYS | 1663.00 | 0.920 | 227.110 | 1662.94 | -4.11 | -9.18 | 0.30 | 9.13 |
| BEGIN NUDGE | 1845.08 | 0.920 | 227.110 | 1845.00 | -6.10 | -11.32 | 0.00 | 11.25 |
| END NUDGE | 2787.63 | 18.000 | 70.000 | 2772.80 | 38.96 | 121.18 | 2.00 | -120.72 |
| BEGIN DROP | 5337.63 | 18.000 | 70.000 | 5198.00 | 308.47 | 861.65 | 0.00 | -858.00 |
| END DROP | 6237.63 | 0.000 | 269.116 | 6083.27 | 356.43 | 993.41 | 2.00 | -989.18 |
| KOP, BUILD @ 10°/100' | 6594.40 | 0.000 | 269.116 | 6440.04 | 356.43 | 993.41 | 0.00 | -989.18 |
| LANDING POINT | 7494.40 | 90.000 | 269.116 | 7013.00 | 347.59 | 420.52 | 10.00 | -416.44 |
| BEGIN TURN | 7572.60 | 90.000 | 270.680 | 7013.00 | 347.45 | 342.32 | 2.00 | -338.25 |
| TOTAL DEPTH | 12661.85 | 90.000 | 270.680 | 7013.00 | 407.86 | -4746.57 | 0.00 | 4751.00 |

| Name | MD (ft) | TVD (ft) | Local N (ft) | Local E (ft) | Grid East (SUS) | Grid North (SUS) | Latitude | Longitude |
|--|---------|----------|--------------|--------------|-----------------|------------------|----------------|----------------|
| SEC 25-TN-69W SECTION LINES | | -18.00 | 1217.57 | -100.20 | 3105507.77 | 1315781.51 | 42°15'55.927N | 104°56'38.932W |
| BARFOOT S2N-20W2 AND BOX | 7913.00 | 0.00 | 0.00 | 0.00 | 3105460.69 | 1314650.24 | 42°11'43.947N | 104°56'36.442W |
| BARFOOT S2N-6W2 B4W, (2300FT), & S0FFW, SEC 25 REV-2 | 7913.00 | 367.86 | -4746.55 | 310571.73 | 1314603.29 | 42°11'46.567N | 104°57'37.690W | |
| BARFOOT S2N-6W2 B4W, (2300FT), & S0FFW, SEC 25 REV-3 | 1580.85 | 7913.00 | 407.86 | -4746.57 | 3105507.87 | 1314643.38 | 42°11'47.966N | 104°57'37.690W |
| BARFOOT S2N-6W2 B4W, ON PLAT (2300FT), & S0FFW, SEC 25 REV-1 | 7913.00 | 212.88 | -4746.57 | 310572.08 | 1314640.38 | 42°11'47.966N | 104°57'37.690W | |



Planned Wellpath Report

BAREFOOT 32N-25HZ (REV-B.0) PWP

Page 1 of 7

| REFERENCE WELLPATH IDENTIFICATION | | | |
|-----------------------------------|---------------------------------|----------|--|
| Operator | KERR-MCGEE OIL & GAS ONSHORE LP | Slot | SLOT#33 BAREFOOT 32N-25HZ (2019'FSL & 470'FEL, SEC.25) |
| Area | COLORADO | Well | BAREFOOT 32N-25HZ |
| Field | WELD COUNTY (KERR MCGEE) | Wellbore | BAREFOOT 32N-25HZ PWB |
| Facility | SEC.25-T3N-R68W | | |

| REPORT SETUP INFORMATION | | | |
|--------------------------|---|----------------------|---|
| Projection System | NAD83 / Lambert Colorado SP, Northern Zone (501), US feet | Software System | WellArchitect® 4.0.0 |
| North Reference | True | User | Precain |
| Scale | 0.999957 | Report Generated | 20/Jun/2014 at 12:50 |
| Convergence at slot | n/a | Database/Source file | WellArchitectDB/BAREFOOT_32N-25HZ_PWB.xml |

| WELLPATH LOCATION | | | | | | |
|-----------------------|-------------------|----------|------------------|-----------------|------------------------|-----------------|
| | Local coordinates | | Grid coordinates | | Geographic coordinates | |
| | North[ft] | East[ft] | Easting[US ft] | Northing[US ft] | Latitude | Longitude |
| Slot Location | -1654.30 | 1059.88 | 3155469.69 | 1314565.24 | 40°11'43.940"N | 104°56'36.442"W |
| Facility Reference Pt | | | 3154399.57 | 1316212.82 | 40°12'00.288"N | 104°56'50.100"W |
| Field Reference Pt | | | 3197771.84 | 1268891.29 | 40°04'09.600"N | 104°47'36.000"W |

| WELLPATH DATUM | | | |
|--------------------------|------------------------|---|-------------------|
| Calculation method | Minimum curvature | XTREME 8 (17'KB) (RKB) to Facility Vertical Datum | 4888.00ft |
| Horizontal Reference Pt | Slot | XTREME 8 (17'KB) (RKB) to Mean Sea Level | 4888.00ft |
| Vertical Reference Pt | XTREME 8 (17'KB) (RKB) | XTREME 8 (17'KB) (RKB) to Mud Line at Slot (SLOT#33 BAREFOOT 32N-25HZ (2019'FSL & 470'FEL, SEC.25)) | 4888.00ft |
| MD Reference Pt | XTREME 8 (17'KB) (RKB) | Section Origin | N 0.00, E 0.00 ft |
| Field Vertical Reference | Mean Sea Level | Section Azimuth | 270.67° |

Planned Wellpath Report

BAREFOOT 32N-25HZ (REV-B.0) PWP

Page 2 of 7

REFERENCE WELLPATH IDENTIFICATION

| | | | |
|----------|---------------------------------|----------|--|
| Operator | KERR-MCGEE OIL & GAS ONSHORE LP | Slot | SLOT#33 BAREFOOT 32N-25HZ (2019'FSL & 470'FEL, SEC.25) |
| Area | COLORADO | Well | BAREFOOT 32N-25HZ |
| Field | WELD COUNTY (KERR MCGEE) | Wellbore | BAREFOOT 32N-25HZ PWB |
| Facility | SEC.25-T3N-R68W | | |

WELLPATH DATA (142 stations) † = interpolated/extrapolated station

| MD [ft] | Inclination [°] | Azimuth [°] | TVD [ft] | Vert Sect [ft] | North [ft] | East [ft] | Latitude | Longitude | DLS [°/100ft] | Comments |
|----------|-----------------|-------------|----------|----------------|------------|-----------|----------------|-----------------|---------------|-----------------------|
| 0.00† | 0.000 | 147.190 | 0.00 | 0.00 | 0.00 | 0.00 | 40°11'43.940"N | 104°56'36.442"W | 0.00 | |
| 17.00 | 0.000 | 147.190 | 17.00 | 0.00 | 0.00 | 0.00 | 40°11'43.940"N | 104°56'36.442"W | 0.00 | |
| 117.00 | 0.450 | 147.190 | 117.00 | -0.22 | -0.33 | 0.21 | 40°11'43.937"N | 104°56'36.439"W | 0.45 | |
| 217.00 | 0.320 | 178.150 | 217.00 | -0.45 | -0.94 | 0.43 | 40°11'43.931"N | 104°56'36.436"W | 0.24 | |
| 317.00 | 0.180 | 154.570 | 317.00 | -0.53 | -1.36 | 0.51 | 40°11'43.927"N | 104°56'36.435"W | 0.17 | |
| 417.00 | 0.230 | 268.450 | 417.00 | -0.40 | -1.51 | 0.38 | 40°11'43.925"N | 104°56'36.437"W | 0.34 | |
| 517.00 | 0.370 | 264.950 | 516.99 | 0.13 | -1.54 | -0.14 | 40°11'43.925"N | 104°56'36.444"W | 0.14 | |
| 617.00 | 0.600 | 260.410 | 616.99 | 0.96 | -1.66 | -0.98 | 40°11'43.924"N | 104°56'36.455"W | 0.23 | |
| 717.00 | 0.560 | 254.780 | 716.99 | 1.95 | -1.87 | -1.97 | 40°11'43.921"N | 104°56'36.467"W | 0.07 | |
| 817.00 | 0.650 | 238.340 | 816.98 | 2.90 | -2.30 | -2.92 | 40°11'43.917"N | 104°56'36.480"W | 0.19 | |
| 917.00 | 0.540 | 224.520 | 916.97 | 3.70 | -2.93 | -3.74 | 40°11'43.911"N | 104°56'36.490"W | 0.18 | |
| 1017.00 | 0.350 | 210.790 | 1016.97 | 4.18 | -3.53 | -4.22 | 40°11'43.905"N | 104°56'36.496"W | 0.22 | |
| 1117.00 | 0.110 | 219.520 | 1116.97 | 4.40 | -3.87 | -4.44 | 40°11'43.902"N | 104°56'36.499"W | 0.24 | |
| 1217.00 | 0.150 | 302.420 | 1216.97 | 4.57 | -3.87 | -4.61 | 40°11'43.902"N | 104°56'36.501"W | 0.17 | |
| 1247.03† | 0.220 | 294.776 | 1247.00 | 4.65 | -3.83 | -4.70 | 40°11'43.902"N | 104°56'36.503"W | 0.25 | Fox Hills Marker |
| 1317.00 | 0.390 | 287.930 | 1316.97 | 5.00 | -3.70 | -5.05 | 40°11'43.903"N | 104°56'36.507"W | 0.25 | |
| 1417.00 | 0.710 | 291.940 | 1416.96 | 5.91 | -3.36 | -5.95 | 40°11'43.907"N | 104°56'36.519"W | 0.32 | |
| 1517.00 | 0.790 | 268.980 | 1516.96 | 7.17 | -3.14 | -7.21 | 40°11'43.909"N | 104°56'36.535"W | 0.31 | |
| 1617.00 | 0.970 | 234.960 | 1616.94 | 8.55 | -3.64 | -8.59 | 40°11'43.904"N | 104°56'36.553"W | 0.54 | |
| 1663.00 | 0.920 | 227.110 | 1662.94 | 9.13 | -4.11 | -9.18 | 40°11'43.899"N | 104°56'36.560"W | 0.30 | TIE-INTO GYRO SURVEYS |
| 1763.00† | 0.920 | 227.110 | 1762.93 | 10.30 | -5.21 | -10.36 | 40°11'43.889"N | 104°56'36.575"W | 0.00 | |
| 1845.08 | 0.920 | 227.110 | 1845.00 | 11.25 | -6.10 | -11.32 | 40°11'43.880"N | 104°56'36.588"W | 0.00 | BEGIN NUDGE |
| 1863.00† | 0.602 | 214.325 | 1862.91 | 11.41 | -6.28 | -11.48 | 40°11'43.878"N | 104°56'36.590"W | 2.00 | |
| 1963.00† | 1.543 | 81.760 | 1962.90 | 10.37 | -6.52 | -10.45 | 40°11'43.876"N | 104°56'36.577"W | 2.00 | |
| 2063.00† | 3.521 | 74.517 | 2062.80 | 6.09 | -5.51 | -6.15 | 40°11'43.886"N | 104°56'36.521"W | 2.00 | |
| 2163.00† | 5.515 | 72.493 | 2162.48 | -1.43 | -3.24 | 1.39 | 40°11'43.908"N | 104°56'36.424"W | 2.00 | |
| 2263.00† | 7.512 | 71.543 | 2261.83 | -12.17 | 0.27 | 12.17 | 40°11'43.943"N | 104°56'36.285"W | 2.00 | |
| 2363.00† | 9.510 | 70.990 | 2360.73 | -26.12 | 5.03 | 26.19 | 40°11'43.990"N | 104°56'36.105"W | 2.00 | |
| 2463.00† | 11.509 | 70.628 | 2459.05 | -43.28 | 11.04 | 43.41 | 40°11'44.049"N | 104°56'35.883"W | 2.00 | |
| 2563.00† | 13.509 | 70.371 | 2556.67 | -63.61 | 18.27 | 63.82 | 40°11'44.121"N | 104°56'35.620"W | 2.00 | |
| 2663.00† | 15.508 | 70.180 | 2653.47 | -87.09 | 26.73 | 87.40 | 40°11'44.204"N | 104°56'35.316"W | 2.00 | |
| 2763.00† | 17.508 | 70.032 | 2749.35 | -113.69 | 36.40 | 114.12 | 40°11'44.300"N | 104°56'34.971"W | 2.00 | |
| 2787.63 | 18.000 | 70.000 | 2772.80 | -120.72 | 38.96 | 121.18 | 40°11'44.325"N | 104°56'34.880"W | 2.00 | END NUDGE |
| 2863.00† | 18.000 | 70.000 | 2844.48 | -142.51 | 46.93 | 143.06 | 40°11'44.404"N | 104°56'34.598"W | 0.00 | |
| 2963.00† | 18.000 | 70.000 | 2939.59 | -171.42 | 57.50 | 172.10 | 40°11'44.508"N | 104°56'34.224"W | 0.00 | |
| 3063.00† | 18.000 | 70.000 | 3034.70 | -200.33 | 68.07 | 201.14 | 40°11'44.613"N | 104°56'33.850"W | 0.00 | |
| 3163.00† | 18.000 | 70.000 | 3129.80 | -229.25 | 78.64 | 230.18 | 40°11'44.717"N | 104°56'33.476"W | 0.00 | |
| 3263.00† | 18.000 | 70.000 | 3224.91 | -258.16 | 89.20 | 259.22 | 40°11'44.822"N | 104°56'33.102"W | 0.00 | |
| 3363.00† | 18.000 | 70.000 | 3320.01 | -287.07 | 99.77 | 288.26 | 40°11'44.926"N | 104°56'32.727"W | 0.00 | |
| 3463.00† | 18.000 | 70.000 | 3415.12 | -315.99 | 110.34 | 317.29 | 40°11'45.030"N | 104°56'32.353"W | 0.00 | |
| 3563.00† | 18.000 | 70.000 | 3510.22 | -344.90 | 120.91 | 346.33 | 40°11'45.135"N | 104°56'31.979"W | 0.00 | |
| 3663.00† | 18.000 | 70.000 | 3605.33 | -373.81 | 131.48 | 375.37 | 40°11'45.239"N | 104°56'31.605"W | 0.00 | |
| 3763.00† | 18.000 | 70.000 | 3700.44 | -402.72 | 142.05 | 404.41 | 40°11'45.344"N | 104°56'31.231"W | 0.00 | |
| 3863.00† | 18.000 | 70.000 | 3795.54 | -431.64 | 152.62 | 433.45 | 40°11'45.448"N | 104°56'30.856"W | 0.00 | |
| 3963.00† | 18.000 | 70.000 | 3890.65 | -460.55 | 163.19 | 462.48 | 40°11'45.553"N | 104°56'30.482"W | 0.00 | |

Planned Wellpath Report

BAREFOOT 32N-25HZ (REV-B.0) PWP

Page 3 of 7

| REFERENCE WELLPATH IDENTIFICATION | | | |
|-----------------------------------|---------------------------------|----------|--|
| Operator | KERR-MCGEE OIL & GAS ONSHORE LP | Slot | SLOT#33 BAREFOOT 32N-25HZ (2019'FSL & 470'FEL, SEC.25) |
| Area | COLORADO | Well | BAREFOOT 32N-25HZ |
| Field | WELD COUNTY (KERR MCGEE) | Wellbore | BAREFOOT 32N-25HZ PWB |
| Facility | SEC.25-T3N-R68W | | |

WELLPATH DATA (142 stations) † = interpolated/extrapolated station

| MD [ft] | Inclination [°] | Azimuth [°] | TVD [ft] | Vert Sect [ft] | North [ft] | East [ft] | Latitude | Longitude | DLS [°/100ft] | Comments |
|----------|-----------------|-------------|----------|----------------|------------|-----------|----------------|-----------------|---------------|-----------------------|
| 4063.00† | 18.000 | 70.000 | 3985.75 | -489.46 | 173.76 | 491.52 | 40°11'45.657"N | 104°56'30.108"W | 0.00 | |
| 4163.00† | 18.000 | 70.000 | 4080.86 | -518.38 | 184.33 | 520.56 | 40°11'45.761"N | 104°56'29.734"W | 0.00 | |
| 4263.00† | 18.000 | 70.000 | 4175.96 | -547.29 | 194.89 | 549.60 | 40°11'45.866"N | 104°56'29.360"W | 0.00 | |
| 4363.00† | 18.000 | 70.000 | 4271.07 | -576.20 | 205.46 | 578.64 | 40°11'45.970"N | 104°56'28.985"W | 0.00 | |
| 4400.78† | 18.000 | 70.000 | 4307.00 | -587.12 | 209.46 | 589.61 | 40°11'46.010"N | 104°56'28.844"W | 0.00 | Sussex |
| 4463.00† | 18.000 | 70.000 | 4366.17 | -605.11 | 216.03 | 607.67 | 40°11'46.075"N | 104°56'28.611"W | 0.00 | |
| 4563.00† | 18.000 | 70.000 | 4461.28 | -634.03 | 226.60 | 636.71 | 40°11'46.179"N | 104°56'28.237"W | 0.00 | |
| 4663.00† | 18.000 | 70.000 | 4556.39 | -662.94 | 237.17 | 665.75 | 40°11'46.284"N | 104°56'27.863"W | 0.00 | |
| 4705.70† | 18.000 | 70.000 | 4597.00 | -675.29 | 241.68 | 678.15 | 40°11'46.328"N | 104°56'27.703"W | 0.00 | Shannon |
| 4763.00† | 18.000 | 70.000 | 4651.49 | -691.85 | 247.74 | 694.79 | 40°11'46.388"N | 104°56'27.489"W | 0.00 | |
| 4863.00† | 18.000 | 70.000 | 4746.60 | -720.77 | 258.31 | 723.83 | 40°11'46.493"N | 104°56'27.114"W | 0.00 | |
| 4963.00† | 18.000 | 70.000 | 4841.70 | -749.68 | 268.88 | 752.86 | 40°11'46.597"N | 104°56'26.740"W | 0.00 | |
| 5063.00† | 18.000 | 70.000 | 4936.81 | -778.59 | 279.45 | 781.90 | 40°11'46.701"N | 104°56'26.366"W | 0.00 | |
| 5163.00† | 18.000 | 70.000 | 5031.91 | -807.50 | 290.02 | 810.94 | 40°11'46.806"N | 104°56'25.992"W | 0.00 | |
| 5263.00† | 18.000 | 70.000 | 5127.02 | -836.42 | 300.58 | 839.98 | 40°11'46.910"N | 104°56'25.618"W | 0.00 | |
| 5337.63 | 18.000 | 70.000 | 5198.00 | -858.00 | 308.47 | 861.65 | 40°11'46.988"N | 104°56'25.338"W | 0.00 | BEGIN DROP |
| 5363.00† | 17.493 | 70.000 | 5222.16 | -865.23 | 311.12 | 868.92 | 40°11'47.014"N | 104°56'25.245"W | 2.00 | |
| 5463.00† | 15.493 | 70.000 | 5318.04 | -891.79 | 320.83 | 895.59 | 40°11'47.110"N | 104°56'24.901"W | 2.00 | |
| 5563.00† | 13.493 | 70.000 | 5414.85 | -915.20 | 329.39 | 919.11 | 40°11'47.195"N | 104°56'24.598"W | 2.00 | |
| 5663.00† | 11.493 | 70.000 | 5512.48 | -935.44 | 336.78 | 939.43 | 40°11'47.268"N | 104°56'24.336"W | 2.00 | |
| 5763.00† | 9.493 | 70.000 | 5610.80 | -952.48 | 343.01 | 956.55 | 40°11'47.329"N | 104°56'24.115"W | 2.00 | |
| 5863.00† | 7.493 | 70.000 | 5709.70 | -966.30 | 348.06 | 970.42 | 40°11'47.379"N | 104°56'23.937"W | 2.00 | |
| 5963.00† | 5.493 | 70.000 | 5809.06 | -976.88 | 351.93 | 981.05 | 40°11'47.418"N | 104°56'23.800"W | 2.00 | |
| 6063.00† | 3.493 | 70.000 | 5908.74 | -984.21 | 354.61 | 988.41 | 40°11'47.444"N | 104°56'23.705"W | 2.00 | |
| 6163.00† | 1.493 | 70.000 | 6008.64 | -988.28 | 356.10 | 992.49 | 40°11'47.459"N | 104°56'23.652"W | 2.00 | |
| 6237.63 | 0.000 | 269.116 | 6083.27 | -989.18 | 356.43 | 993.41 | 40°11'47.462"N | 104°56'23.640"W | 2.00 | END DROP |
| 6263.00† | 0.000 | 269.116 | 6108.64 | -989.18 | 356.43 | 993.41 | 40°11'47.462"N | 104°56'23.640"W | 0.00 | |
| 6363.00† | 0.000 | 269.116 | 6208.64 | -989.18 | 356.43 | 993.41 | 40°11'47.462"N | 104°56'23.640"W | 0.00 | |
| 6463.00† | 0.000 | 269.116 | 6308.64 | -989.18 | 356.43 | 993.41 | 40°11'47.462"N | 104°56'23.640"W | 0.00 | |
| 6563.00† | 0.000 | 269.116 | 6408.64 | -989.18 | 356.43 | 993.41 | 40°11'47.462"N | 104°56'23.640"W | 0.00 | |
| 6594.40 | 0.000 | 269.116 | 6440.04 | -989.18 | 356.43 | 993.41 | 40°11'47.462"N | 104°56'23.640"W | 0.00 | KOP, BUILD @ 10°/100' |
| 6663.00† | 6.860 | 269.116 | 6508.47 | -985.08 | 356.37 | 989.31 | 40°11'47.461"N | 104°56'23.693"W | 10.00 | |
| 6763.00† | 16.860 | 269.116 | 6606.21 | -964.57 | 356.05 | 968.78 | 40°11'47.458"N | 104°56'23.958"W | 10.00 | |
| 6863.00† | 26.860 | 269.116 | 6698.91 | -927.39 | 355.47 | 931.60 | 40°11'47.453"N | 104°56'24.437"W | 10.00 | |
| 6963.00† | 36.860 | 269.116 | 6783.73 | -874.70 | 354.66 | 878.89 | 40°11'47.445"N | 104°56'25.116"W | 10.00 | |
| 7059.92† | 46.551 | 269.116 | 6856.00 | -810.32 | 353.67 | 814.50 | 40°11'47.435"N | 104°56'25.946"W | 10.00 | Sharon Springs |
| 7063.00† | 46.860 | 269.116 | 6858.12 | -808.07 | 353.63 | 812.25 | 40°11'47.434"N | 104°56'25.975"W | 10.00 | |
| 7163.00† | 56.860 | 269.116 | 6919.80 | -729.55 | 352.42 | 733.71 | 40°11'47.423"N | 104°56'26.987"W | 10.00 | |
| 7199.98† | 60.558 | 269.116 | 6939.00 | -697.97 | 351.93 | 702.12 | 40°11'47.418"N | 104°56'27.394"W | 10.00 | Niobrara A |
| 7263.00† | 66.860 | 269.116 | 6966.90 | -641.52 | 351.06 | 645.65 | 40°11'47.409"N | 104°56'28.122"W | 10.00 | |
| 7324.54† | 73.013 | 269.116 | 6988.00 | -583.76 | 350.17 | 587.89 | 40°11'47.400"N | 104°56'28.866"W | 10.00 | Niobrara B |
| 7363.00† | 76.860 | 269.116 | 6997.99 | -546.64 | 349.60 | 550.76 | 40°11'47.395"N | 104°56'29.345"W | 10.00 | |
| 7463.00† | 86.860 | 269.116 | 7012.14 | -447.81 | 348.07 | 451.90 | 40°11'47.380"N | 104°56'30.619"W | 10.00 | |
| 7494.40 | 90.000 | 269.116 | 7013.00 | -416.44 | 347.59 | 420.52 | 40°11'47.375"N | 104°56'31.023"W | 10.00 | LANDING POINT |
| 7563.00† | 90.000 | 270.488 | 7013.00 | -347.85 | 347.35 | 351.92 | 40°11'47.372"N | 104°56'31.907"W | 2.00 | |

Planned Wellpath Report

BAREFOOT 32N-25HZ (REV-B.0) PWP

Page 4 of 7

| REFERENCE WELLPATH IDENTIFICATION | | | |
|-----------------------------------|---------------------------------|----------|--|
| Operator | KERR-MCGEE OIL & GAS ONSHORE LP | Slot | SLOT#33 BAREFOOT 32N-25HZ (2019'FSL & 470'FEL, SEC.25) |
| Area | COLORADO | Well | BAREFOOT 32N-25HZ |
| Field | WELD COUNTY (KERR MCGEE) | Wellbore | BAREFOOT 32N-25HZ PWB |
| Facility | SEC.25-T3N-R68W | | |

WELLPATH DATA (142 stations) † = interpolated/extrapolated station

| MD [ft] | Inclination [°] | Azimuth [°] | TVD [ft] | Vert Sect [ft] | North [ft] | East [ft] | Latitude | Longitude | DLS [°/100ft] | Comments |
|-----------|-----------------|-------------|----------|----------------|------------|-----------|----------------|-----------------|---------------|------------|
| 7572.60 | 90.000 | 270.680 | 7013.00 | -338.25 | 347.45 | 342.32 | 40°11'47.373"N | 104°56'32.031"W | 2.00 | BEGIN TURN |
| 7663.00† | 90.000 | 270.680 | 7013.00 | -247.85 | 348.52 | 251.93 | 40°11'47.384"N | 104°56'33.195"W | 0.00 | |
| 7763.00† | 90.000 | 270.680 | 7013.00 | -147.85 | 349.71 | 151.94 | 40°11'47.396"N | 104°56'34.484"W | 0.00 | |
| 7863.00† | 90.000 | 270.680 | 7013.00 | -47.85 | 350.90 | 51.94 | 40°11'47.408"N | 104°56'35.773"W | 0.00 | |
| 7963.00† | 90.000 | 270.680 | 7013.00 | 52.15 | 352.08 | -48.05 | 40°11'47.419"N | 104°56'37.061"W | 0.00 | |
| 8063.00† | 90.000 | 270.680 | 7013.00 | 152.15 | 353.27 | -148.04 | 40°11'47.431"N | 104°56'38.350"W | 0.00 | |
| 8163.00† | 90.000 | 270.680 | 7013.00 | 252.15 | 354.46 | -248.03 | 40°11'47.443"N | 104°56'39.638"W | 0.00 | |
| 8263.00† | 90.000 | 270.680 | 7013.00 | 352.15 | 355.64 | -348.03 | 40°11'47.454"N | 104°56'40.927"W | 0.00 | |
| 8363.00† | 90.000 | 270.680 | 7013.00 | 452.15 | 356.83 | -448.02 | 40°11'47.466"N | 104°56'42.215"W | 0.00 | |
| 8463.00† | 90.000 | 270.680 | 7013.00 | 552.15 | 358.02 | -548.01 | 40°11'47.478"N | 104°56'43.504"W | 0.00 | |
| 8563.00† | 90.000 | 270.680 | 7013.00 | 652.15 | 359.20 | -648.01 | 40°11'47.490"N | 104°56'44.793"W | 0.00 | |
| 8663.00† | 90.000 | 270.680 | 7013.00 | 752.15 | 360.39 | -748.00 | 40°11'47.501"N | 104°56'46.081"W | 0.00 | |
| 8763.00† | 90.000 | 270.680 | 7013.00 | 852.15 | 361.58 | -847.99 | 40°11'47.513"N | 104°56'47.370"W | 0.00 | |
| 8863.00† | 90.000 | 270.680 | 7013.00 | 952.15 | 362.76 | -947.99 | 40°11'47.525"N | 104°56'48.658"W | 0.00 | |
| 8963.00† | 90.000 | 270.680 | 7013.00 | 1052.15 | 363.95 | -1047.98 | 40°11'47.536"N | 104°56'49.947"W | 0.00 | |
| 9063.00† | 90.000 | 270.680 | 7013.00 | 1152.15 | 365.14 | -1147.97 | 40°11'47.548"N | 104°56'51.236"W | 0.00 | |
| 9163.00† | 90.000 | 270.680 | 7013.00 | 1252.15 | 366.33 | -1247.96 | 40°11'47.560"N | 104°56'52.524"W | 0.00 | |
| 9263.00† | 90.000 | 270.680 | 7013.00 | 1352.15 | 367.51 | -1347.96 | 40°11'47.571"N | 104°56'53.813"W | 0.00 | |
| 9363.00† | 90.000 | 270.680 | 7013.00 | 1452.15 | 368.70 | -1447.95 | 40°11'47.583"N | 104°56'55.101"W | 0.00 | |
| 9463.00† | 90.000 | 270.680 | 7013.00 | 1552.15 | 369.89 | -1547.94 | 40°11'47.595"N | 104°56'56.390"W | 0.00 | |
| 9563.00† | 90.000 | 270.680 | 7013.00 | 1652.15 | 371.07 | -1647.94 | 40°11'47.606"N | 104°56'57.678"W | 0.00 | |
| 9663.00† | 90.000 | 270.680 | 7013.00 | 1752.15 | 372.26 | -1747.93 | 40°11'47.618"N | 104°56'58.967"W | 0.00 | |
| 9763.00† | 90.000 | 270.680 | 7013.00 | 1852.15 | 373.45 | -1847.92 | 40°11'47.630"N | 104°57'00.256"W | 0.00 | |
| 9863.00† | 90.000 | 270.680 | 7013.00 | 1952.15 | 374.63 | -1947.91 | 40°11'47.641"N | 104°57'01.544"W | 0.00 | |
| 9963.00† | 90.000 | 270.680 | 7013.00 | 2052.15 | 375.82 | -2047.91 | 40°11'47.653"N | 104°57'02.833"W | 0.00 | |
| 10063.00† | 90.000 | 270.680 | 7013.00 | 2152.15 | 377.01 | -2147.90 | 40°11'47.665"N | 104°57'04.121"W | 0.00 | |
| 10163.00† | 90.000 | 270.680 | 7013.00 | 2252.15 | 378.20 | -2247.89 | 40°11'47.676"N | 104°57'05.410"W | 0.00 | |
| 10263.00† | 90.000 | 270.680 | 7013.00 | 2352.15 | 379.38 | -2347.89 | 40°11'47.688"N | 104°57'06.698"W | 0.00 | |
| 10363.00† | 90.000 | 270.680 | 7013.00 | 2452.15 | 380.57 | -2447.88 | 40°11'47.700"N | 104°57'07.987"W | 0.00 | |
| 10463.00† | 90.000 | 270.680 | 7013.00 | 2552.15 | 381.76 | -2547.87 | 40°11'47.711"N | 104°57'09.276"W | 0.00 | |
| 10563.00† | 90.000 | 270.680 | 7013.00 | 2652.15 | 382.94 | -2647.87 | 40°11'47.723"N | 104°57'10.564"W | 0.00 | |
| 10663.00† | 90.000 | 270.680 | 7013.00 | 2752.15 | 384.13 | -2747.86 | 40°11'47.734"N | 104°57'11.853"W | 0.00 | |
| 10763.00† | 90.000 | 270.680 | 7013.00 | 2852.15 | 385.32 | -2847.85 | 40°11'47.746"N | 104°57'13.141"W | 0.00 | |
| 10863.00† | 90.000 | 270.680 | 7013.00 | 2952.15 | 386.50 | -2947.84 | 40°11'47.758"N | 104°57'14.430"W | 0.00 | |
| 10963.00† | 90.000 | 270.680 | 7013.00 | 3052.15 | 387.69 | -3047.84 | 40°11'47.769"N | 104°57'15.718"W | 0.00 | |
| 11063.00† | 90.000 | 270.680 | 7013.00 | 3152.15 | 388.88 | -3147.83 | 40°11'47.781"N | 104°57'17.007"W | 0.00 | |
| 11163.00† | 90.000 | 270.680 | 7013.00 | 3252.15 | 390.07 | -3247.82 | 40°11'47.793"N | 104°57'18.296"W | 0.00 | |
| 11263.00† | 90.000 | 270.680 | 7013.00 | 3352.15 | 391.25 | -3347.82 | 40°11'47.804"N | 104°57'19.584"W | 0.00 | |
| 11363.00† | 90.000 | 270.680 | 7013.00 | 3452.15 | 392.44 | -3447.81 | 40°11'47.816"N | 104°57'20.873"W | 0.00 | |
| 11463.00† | 90.000 | 270.680 | 7013.00 | 3552.15 | 393.63 | -3547.80 | 40°11'47.827"N | 104°57'22.161"W | 0.00 | |
| 11563.00† | 90.000 | 270.680 | 7013.00 | 3652.15 | 394.81 | -3647.80 | 40°11'47.839"N | 104°57'23.450"W | 0.00 | |
| 11663.00† | 90.000 | 270.680 | 7013.00 | 3752.15 | 396.00 | -3747.79 | 40°11'47.850"N | 104°57'24.739"W | 0.00 | |
| 11763.00† | 90.000 | 270.680 | 7013.00 | 3852.15 | 397.19 | -3847.78 | 40°11'47.862"N | 104°57'26.027"W | 0.00 | |
| 11863.00† | 90.000 | 270.680 | 7013.00 | 3952.15 | 398.38 | -3947.77 | 40°11'47.874"N | 104°57'27.316"W | 0.00 | |
| 11963.00† | 90.000 | 270.680 | 7013.00 | 4052.15 | 399.56 | -4047.77 | 40°11'47.885"N | 104°57'28.604"W | 0.00 | |

| REFERENCE WELLPATH IDENTIFICATION | | | |
|-----------------------------------|---------------------------------|----------|--|
| Operator | KERR-MCGEE OIL & GAS ONSHORE LP | Slot | SLOT#33 BAREFOOT 32N-25HZ (2019'FSL & 470'FEL, SEC.25) |
| Area | COLORADO | Well | BAREFOOT 32N-25HZ |
| Field | WELD COUNTY (KERR MCGEE) | Wellbore | BAREFOOT 32N-25HZ PWB |
| Facility | SEC.25-T3N-R68W | | |

| WELLPATH DATA (142 stations) † = interpolated/extrapolated station | | | | | | | | | | |
|--|-----------------|-------------|----------------------|----------------|------------|-----------|----------------|-----------------|---------------|-------------|
| MD [ft] | Inclination [°] | Azimuth [°] | TVD [ft] | Vert Sect [ft] | North [ft] | East [ft] | Latitude | Longitude | DLS [°/100ft] | Comments |
| 12063.00† | 90.000 | 270.680 | 7013.00 | 4152.15 | 400.75 | -4147.76 | 40°11'47.897"N | 104°57'29.893"W | 0.00 | |
| 12163.00† | 90.000 | 270.680 | 7013.00 | 4252.15 | 401.94 | -4247.75 | 40°11'47.908"N | 104°57'31.181"W | 0.00 | |
| 12263.00† | 90.000 | 270.680 | 7013.00 | 4352.15 | 403.12 | -4347.75 | 40°11'47.920"N | 104°57'32.470"W | 0.00 | |
| 12363.00† | 90.000 | 270.680 | 7013.00 | 4452.15 | 404.31 | -4447.74 | 40°11'47.931"N | 104°57'33.759"W | 0.00 | |
| 12463.00† | 90.000 | 270.680 | 7013.00 | 4552.15 | 405.50 | -4547.73 | 40°11'47.943"N | 104°57'35.047"W | 0.00 | |
| 12563.00† | 90.000 | 270.680 | 7013.00 | 4652.15 | 406.69 | -4647.72 | 40°11'47.955"N | 104°57'36.336"W | 0.00 | |
| 12661.85 | 90.000 | 270.680 | 7013.00 ¹ | 4751.00 | 407.86 | -4746.57 | 40°11'47.966"N | 104°57'37.609"W | 0.00 | TOTAL DEPTH |

| HOLE & CASING SECTIONS - Ref Wellbore: BAREFOOT 32N-25HZ PWB Ref Wellpath: BAREFOOT 32N-25HZ (REV-B.0) PWP | | | | | | | | | |
|--|---------------|-------------|---------------|----------------|--------------|----------------|----------------|--------------|--------------|
| String/Diameter | Start MD [ft] | End MD [ft] | Interval [ft] | Start TVD [ft] | End TVD [ft] | Start N/S [ft] | Start E/W [ft] | End N/S [ft] | End E/W [ft] |
| 13.5in Open Hole | 17.00 | 1663.00 | 1646.00 | 17.00 | 1662.94 | 0.00 | 0.00 | -4.11 | -9.18 |
| 13.5in Open Hole | 1663.00 | 1754.00 | 91.00 | 1662.94 | 1753.93 | -4.11 | -9.18 | -5.11 | -10.25 |
| 9.625in Casing Surface | 17.00 | 1744.00 | 1727.00 | 17.00 | 1743.93 | 0.00 | 0.00 | -5.00 | -10.13 |
| 8.75in Open Hole | 1754.00 | 7494.40 | 5740.40 | 1753.93 | 7013.00 | -5.11 | -10.25 | 347.59 | 420.52 |
| 7in Casing Intermediate | 17.00 | 7494.40 | 7477.40 | 17.00 | 7013.00 | 0.00 | 0.00 | 347.59 | 420.52 |
| 6.125in Open Hole | 7494.40 | 12661.85 | 5167.45 | 7013.00 | 7013.00 | 347.59 | 420.52 | 407.86 | -4746.57 |
| 4.5in Casing Production | 17.00 | 12661.85 | 12644.85 | 17.00 | 7013.00 | 0.00 | 0.00 | 407.86 | -4746.57 |

Planned Wellpath Report

BAREFOOT 32N-25HZ (REV-B.0) PWP

Page 6 of 7

| REFERENCE WELLPATH IDENTIFICATION | | | |
|-----------------------------------|---------------------------------|----------|--|
| Operator | KERR-MCGEE OIL & GAS ONSHORE LP | Slot | SLOT#33 BAREFOOT 32N-25HZ (2019'FSL & 470'FEL, SEC.25) |
| Area | COLORADO | Well | BAREFOOT 32N-25HZ |
| Field | WELD COUNTY (KERR MCGEE) | Wellbore | BAREFOOT 32N-25HZ PWB |
| Facility | SEC.25-T3N-R68W | | |

| TARGETS | | | | | | | | | |
|--|----------|----------|------------|-----------|-------------------|--------------------|----------------|-----------------|---------|
| Name | MD [ft] | TVD [ft] | North [ft] | East [ft] | Grid East [US ft] | Grid North [US ft] | Latitude | Longitude | Shape |
| SEC.25-T3N-R68W SECTION LINES | | -16.00 | 1217.57 | -193.29 | 3155268.77 | 1315781.51 | 40°11'55.972"N | 104°56'38.933"W | polygon |
| BAREFOOT 32N-25HZ LAND BOX | | 7013.00 | 0.00 | 0.00 | 3155469.69 | 1314565.24 | 40°11'43.940"N | 104°56'36.442"W | polygon |
| BAREFOOT 32N-5HZ BHL (2360'FSL & 50'FWL, SEC.25) REV-2 | | 7013.00 | 267.86 | -4746.58 | 3150721.73 | 1314803.29 | 40°11'46.582"N | 104°57'37.609"W | point |
| 1) BAREFOOT 32N-5HZ BHL (2500'FSL & 50'FWL, SEC.25) REV-3 | 12661.85 | 7013.00 | 407.86 | -4746.57 | 3150720.87 | 1314943.28 | 40°11'47.966"N | 104°57'37.609"W | point |
| BAREFOOT 32N-5HZ BHL ON PLAT (2305'FSL & 50'FWL, SEC.25) REV-1 | | 7013.00 | 212.88 | -4746.58 | 3150722.08 | 1314748.31 | 40°11'46.039"N | 104°57'37.609"W | point |

| SURVEY PROGRAM - Ref Wellbore: BAREFOOT 32N-25HZ PWB Ref Wellpath: BAREFOOT 32N-25HZ (REV-B.0) PWP | | | | |
|--|-------------|--------------------------------------|------------------|-----------------------|
| Start MD [ft] | End MD [ft] | Positional Uncertainty Model | Log Name/Comment | Wellbore |
| 17.00 | 1663.00 | Generic gyro - continuous (Standard) | | BAREFOOT 32N-25HZ AWB |
| 1663.00 | 7494.40 | NaviTrak (IFR) | | BAREFOOT 32N-25HZ PWB |
| 7494.40 | 12661.85 | NaviTrak (IFR) | | BAREFOOT 32N-25HZ PWB |

Planned Wellpath Report

BAREFOOT 32N-25HZ (REV-B.0) PWP

Page 7 of 7

| REFERENCE WELLPATH IDENTIFICATION | | | |
|-----------------------------------|---------------------------------|----------|--|
| Operator | KERR-MCGEE OIL & GAS ONSHORE LP | Slot | SLOT#33 BAREFOOT 32N-25HZ (2019'FSL & 470'FEL, SEC.25) |
| Area | COLORADO | Well | BAREFOOT 32N-25HZ |
| Field | WELD COUNTY (KERR MCGEE) | Wellbore | BAREFOOT 32N-25HZ PWB |
| Facility | SEC.25-T3N-R68W | | |

| WELLPATH COMMENTS | | | | |
|-------------------|--------------------|----------------|-------------|------------------|
| MD [ft] | Inclination [°] | Azimuth [°] | TVD [ft] | Comment |
| 1247.03 | 0.220 | 294.776 | 1247.00 | Fox Hills Marker |
| 4400.78 | 18.000 | 70.000 | 4307.00 | Sussex |
| 4705.70 | 18.000 | 70.000 | 4597.00 | Shannon |
| 7059.92 | 46.551 | 269.116 | 6856.00 | Sharon Springs |
| 7199.98 | 60.558 | 269.116 | 6939.00 | Niobrara A |
| 7324.54 | 73.013 | 269.116 | 6988.00 | Niobrara B |

| DESIGN COMMENTS | | | | |
|-----------------|--------------------|----------------|-------------|-----------------------|
| MD [ft] | Inclination [°] | Azimuth [°] | TVD [ft] | Comment |
| 1663.00 | 0.920 | 227.110 | 1662.94 | TIE-INTO GYRO SURVEYS |
| 1845.08 | 0.920 | 227.110 | 1845.00 | BEGIN NUDGE |
| 2787.63 | 18.000 | 70.000 | 2772.80 | END NUDGE |
| 5337.63 | 18.000 | 70.000 | 5198.00 | BEGIN DROP |
| 6237.63 | 0.000 | 269.116 | 6083.27 | END DROP |
| 6594.40 | 0.000 | 269.116 | 6440.04 | KOP, BUILD @ 10°/100' |
| 7494.40 | 90.000 | 269.116 | 7013.00 | LANDING POINT |
| 7572.60 | 90.000 | 270.680 | 7013.00 | BEGIN TURN |
| 12661.85 | 90.000 | 270.680 | 7013.00 | TOTAL DEPTH |