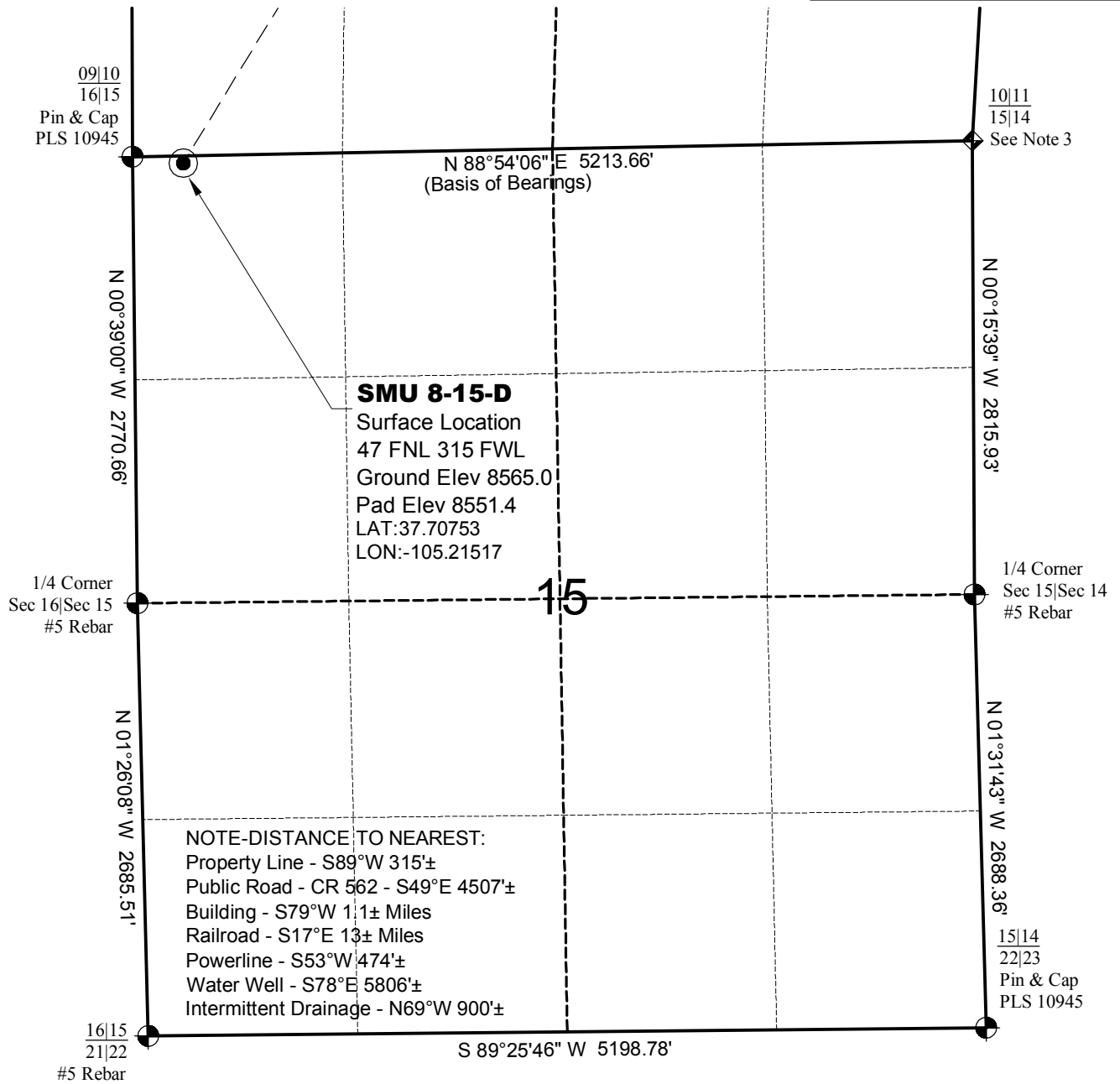


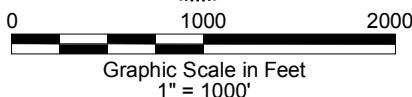
WELL LOCATION MAP

SMU 8-15-D PAD



SURVEYOR'S STATEMENT

The undersigned hereby states that the well location shown hereon was staked on the ground based on existing monumentation and/or physical evidence found in the field and is correct to the best of my knowledge, information and belief.



NOTES

- 1.) Horizontal and vertical datum, based on an OPUS solution.
 - 2.) All directions, distances, and dimensions shown hereon are based on coordinates from the "Colorado coordinate system of 1983 north zone" (article 52 of title 38, C.R.S.).
 - 3.) All section line dimensions shown hereon are based on field measurements of existing monuments and/or physical evidence found in the field unless otherwise indicated. Refer to land survey plats deposited in Huerfano County, COGCC Well Plats, & BLM Survey.
 - 4.) Physical features shown hereon are for graphical representation only.
 - 5.) See Form 2A for visible improvements within 500' of wellhead.
 - 6.) Distances to nearest section lines are measured perpendicularly.
 - 7.) This is not a land survey nor land survey plat.
 - 8.) Date of Survey 10/2/12 Date of Drawing 5/22/14. REV 1
- PDOP Reading: 2.3 Instrument Operator: Sam Selin

5/22/14



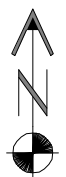
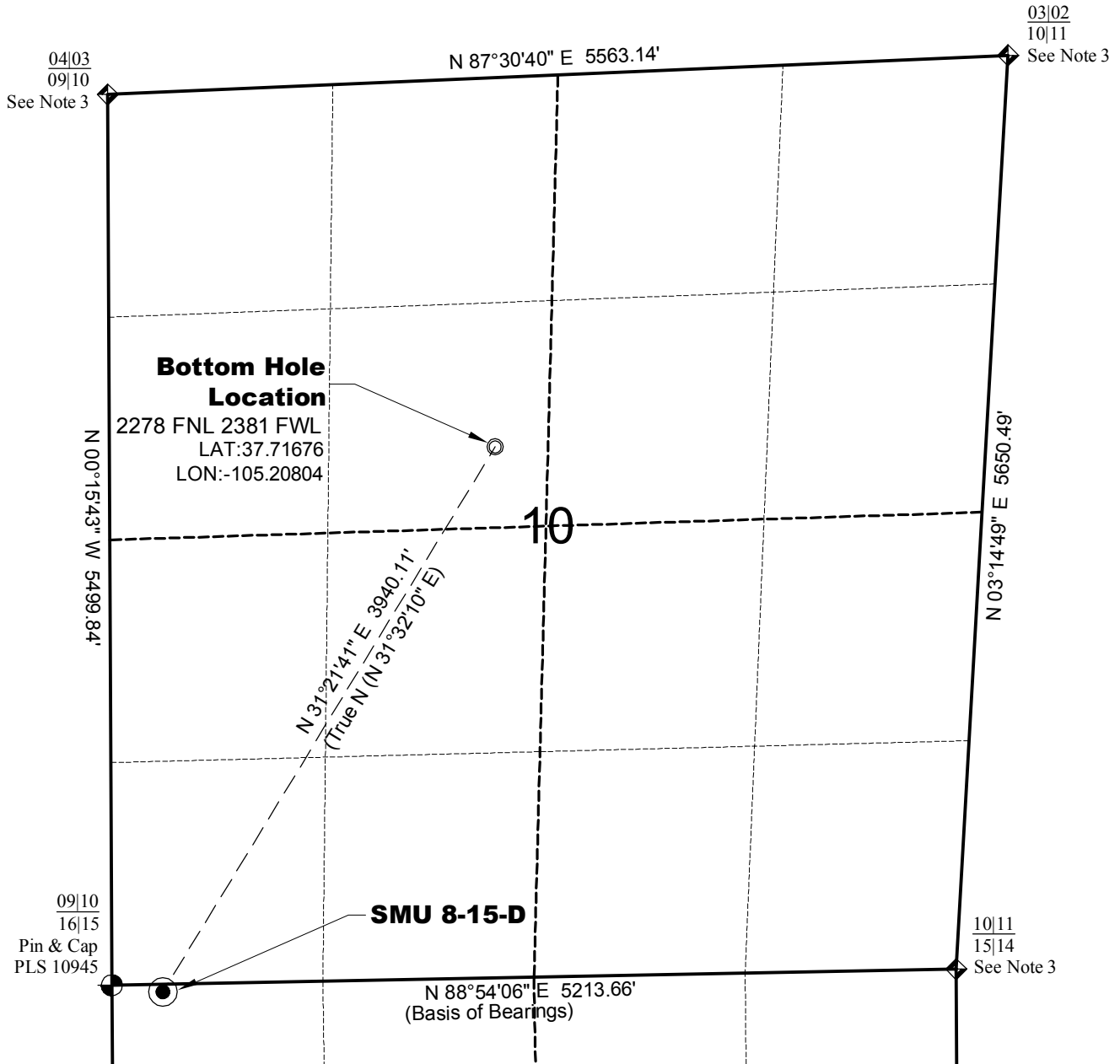
LAND SURVEYING AND MAPPING
LAFAYETTE - WINTER PARK
Ph 303 666 0379 Fx 303 665 6320

OXY PERMIAN
SMU 8-15-D

SL NW1/4 NW1/4 SEC.15 T27S R70W
BHL SE1/4 NW1/4 SEC.10 T27S R70W
6th PM HUERFANO COUNTY COLORADO

BOTTOM HOLE LOCATION MAP

SMU 8-15-D PAD



North



Graphic Scale in Feet
1" = 1000'



LAND SURVEYING AND MAPPING
LAFAYETTE - WINTER PARK
Ph 303 666 0379 Fx 303 665 6320

OXY PERMIAN
SMU 8-15-D

SL NW1/4 NW1/4 SEC.15 T27S R70W
BHL SE1/4 NW1/4 SEC.10 T27S R70W
6th PM HUERFANO COUNTY COLORADO