

The Road to Excellence Starts with Safety

The Road to Excellence Starts with Safety			
Sold To #: 300721	Ship To #: 3099434	Quote #:	Sales Order #: 900721835
Customer: WPX ENERGY ROCKY MOUNTAIN LLC-EBUS		Customer Rep: Duniho, Al	
Well Name: RWF		Well #: 21-35	API/UWI #:
Field: GARND VAILLEY	City (SAP): PARACHUTE	County/Parish: Garfield	State: Colorado
Contractor: CYCLONE 17		Rig/Platform Name/Num: 17	
Job Purpose: Cement Surface Casing			
Well Type: Development Well		Job Type: Cement Surface Casing	
Sales Person: MAYO, MARK		Srv Supervisor: PONDER, THOMAS	MBU ID Emp #: 427112

Job Personnel

HES Emp Name	Exp Hrs	Emp #	HES Emp Name	Exp Hrs	Emp #	HES Emp Name	Exp Hrs	Emp #
LINN, PAUL Andrew	12	479143	PONDER, THOMAS Lynn	12	427112	SINCLAIR, DAN J	12	338784

Equipment

HES Unit #	Distance-1 way	HES Unit #	Distance-1 way	HES Unit #	Distance-1 way	HES Unit #	Distance-1 way
10722398	60 mile	10872429	60 mile	11139330	60 mile	11583931	60 mile
11808847	60 mile						

Job Hours

Date	On Location Hours	Operating Hours	Date	On Location Hours	Operating Hours	Date	On Location Hours	Operating Hours
09/06/2013	8	4	09/07/2013	4	3			

TOTAL Total is the sum of each column separately

Job					Job Times			
Formation Name	Formation Depth (MD)	Top	Bottom		Called Out	Date	Time	Time Zone
Form Type			BHST		On Location	06 - Sep - 2013	12:00	MST
Job depth MD	1152. ft		Job Depth TVD	1152. ft	Job Started	06 - Sep - 2013	16:00	MST
Water Depth			Wk Ht Above Floor	4. ft	Job Completed	06 - Sep - 2013	19:51	MST
Perforation Depth (MD)	From		To		Departed Loc	07 - Sep - 2013	02:30	MST
						07 - Sep - 2013	04:00	MST

Well Data

Description	New / Used	Max pressure psig	Size in	ID in	Weight lbm/ft	Thread	Grade	Top MD ft	Bottom MD ft	Top TVD ft	Bottom TVD ft
OPEN HOLE SECTION				13.5				.	1170.		
9.625" SURFACE CASING	Unknown		9.625	9.001	32.3		H-40	.	1152.		

Tools and Accessories

Type	Size	Qty	Make	Depth	Type	Size	Qty	Make	Depth	Type	Size	Qty	Make
Guide Shoe	9 5/8	1	WTF	1152	Packer					Top Plug	9 5/8	1	HES
Float Shoe					Bridge Plug					Bottom Plug			
Float Collar	9 5/8	1	WTF	1107	Retainer					SSR plug set			
Insert Float										Plug Container	9 5/8	1	HES
Stage Tool										Centralizers			

Miscellaneous Materials

Gelling Agt	Conc	Surfactant	Conc	Acid Type	Qty	Conc	%
Treatment Fld	Conc	Inhibitor	Conc	Sand Type	Size	Qty	

Fluid Data

Stage/Plug #: 1									
Fluid #	Stage Type	Fluid Name	Qty	Qty uom	Mixing Density lbm/gal	Yield ft ³ /sk	Mix Fluid Gal/sk	Rate bbl/min	Total Mix Fluid Gal/sk

Stage/Plug #: 1

Stage/Plug #: 1									
Fluid #	Stage Type	Fluid Name	Qty	Qty uom	Mixing Density lbm/gal	Yield ft ³ /sk	Mix Fluid Gal/sk	Rate bbl/min	Total Mix Fluid Gal/sk
1	Fresh Water Spacer		20.00	bbl	8.34	.0	.0	4.0	
2	VariCem GJ1 Lead Cement	VARICEM (TM) CEMENT (452009)	160.0	sacks	12.3	2.38	13.75	8.0	13.75
	13.75 Gal	FRESH WATER							
3	VariCem GJ1 Tail Cement	VERSACEM (TM) SYSTEM (452010)	160.0	sacks	12.8	2.11	11.75	8.0	11.75
	11.75 Gal	FRESH WATER							
4	Fresh Water Displacement		87.00	bbl	8.34	.0	.0	10.0	
Calculated Values		Pressures		Volumes					
Displacement	87.1	Shut In: Instant		Lost Returns		Cement Slurry	127.9	Pad	
Top Of Cement	SURFACE	5 Min		Cement Returns	15	Actual Displacement	87.1	Treatment	
Frac Gradient		15 Min		Spacers	20	Load and Breakdown		Total Job	235
Rates									
Circulating	RIG	Mixing	8	Displacement	10	Avg. Job	8		
Cement Left In Pipe	Amount	45 ft	Reason	Shoe Joint					
Frac Ring # 1 @	ID	Frac ring # 2 @	ID	Frac Ring # 3 @	ID	Frac Ring # 4 @	ID		
The Information Stated Herein Is Correct				Customer Representative Signature					

The Road to Excellence Starts with Safety

Sold To #: 300721		Ship To #: 3099434		Quote #:		Sales Order #: 900721835	
Customer: WPX ENERGY ROCKY MOUNTAIN LLC-EBUS				Customer Rep: Duniho, Al			
Well Name: RWF			Well #: 21-35			API/UWI #:	
Field: GARND VAILLEY		City (SAP): PARACHUTE		County/Parish: Garfield		State: Colorado	
Legal Description:							
Lat:				Long:			
Contractor: CYCLONE 17			Rig/Platform Name/Num: 17				
Job Purpose: Cement Surface Casing						Ticket Amount:	
Well Type: Development Well			Job Type: Cement Surface Casing				
Sales Person: MAYO, MARK			Srvc Supervisor: PONDER, THOMAS			MBU ID Emp #: 427112	

Activity Description	Date/Time	Cht #	Rate bbl/min	Volume bbl		Pressure psig		Comments
				Stage	Total	Tubing	Casing	
Call Out	09/06/2013 12:00							
Crew Leave Yard	09/06/2013 14:00							ALL HES PRESENT FOR PRE-CONVOY SAFETY HUDDLE
Arrive At Loc	09/06/2013 16:00							RIG WAS PUTTING IN THE FIRST JOINT OF CAINS WHEN THE CREW ARIVED ON LOCATION
Assessment Of Location Safety Meeting	09/06/2013 16:30							TD- 1170', TP- 1152', SJ- 45', MUD- 9.7 PPG, YP- 32, PV- 24, HOLE- 13 1/2", SURFACE CASING- 9 5/8" 32.3# H-40
Rig-Up Equipment	09/06/2013 17:00							1-550 PICKUP, 1-ELITE PUMP, 1-660 CUFT BULK TRUCK, RIG LOST 80 BBL OF MUD @ 200', CUSTOMER SAID THAT THEY WOULD CONDITION WELL AFTER TD TO MAKE SURE THAT THEY WERE NOT LOSING AND MORE FLUID
Safety Meeting	09/06/2013 19:30							ALL HES PRESENT, RIG CREW PRESENT, RIG STARTED CIRCULATING ON BOTTOM @ 1900
Start Job	09/06/2013 19:51		2	2			35.0	FILL LINES

Activity Description	Date/Time	Cht #	Rate bbl/min	Volume bbl		Pressure psig		Comments
				Stage	Total	Tubing	Casing	
Test Lines	09/06/2013 19:54		0.1	0.1			4375.0	GOOD PRESSURE TEST, NO LEAKS IN LINES, WATER TEST WITH IN RANGE TO MIX
Pump Spacer 1	09/06/2013 20:02		4	20			75.0	FRESH WATER
Pump Lead Cement	09/06/2013 20:09		8	67.8			267.0	160 SKS 12.3 PPG 2.38 FT3/SK 13.75 GAL/SK
Pump Tail Cement	09/06/2013 20:20		8	60.1			276.0	160 SKS 12.8 PPG 2.11 FT3/SK 11.75 GAL/SK
Shutdown	09/06/2013 20:31							
Drop Plug	09/06/2013 20:31							PLUG DROP VERIFIED VIA TATTLE TELL BY CUSTOMER REP
Pump Displacement	09/06/2013 20:32		10	77.1			490.0	FRESH WATER, WASHED UP MIXING TUB ON TOP OF PLUG WITH FIRST 10 BBL OF DISPLACEMENT
Slow Rate	09/06/2013 20:43		2	10	87.1		228.0	GOOD CIRCULATION THROUGH OUT THE JOB, 15 BBL CEMENT CIRCULATED TO SURFACE
Bump Plug	09/06/2013 20:46				87.1		250.0	PLUG BUMPED
Check Floats	09/06/2013 20:48						991.0	FLOATS HELD, 1/2 BBL BACK TO THE DISPLACEMENT TANKS, AS SOON AS THE PUMPS WERE DISENGAGED THE CEMENT STARTED FALLING, CALLED FOR TOP-OUT CEMENT
Arrive At Loc	09/07/2013 01:00							TOP OUT CEMENT ARRIVED ON LOCATION @ 0100, CEMENT WAS ABOUT 85' FROM SURFACE, CONDUCTOR WAS SET @ 63'
Activity Description	Date/Time	Cht #	Rate bbl/min	Volume bbl		Pressure psig		Comments
				Stage	Total	Tubing	Casing	

Cementing Job Log

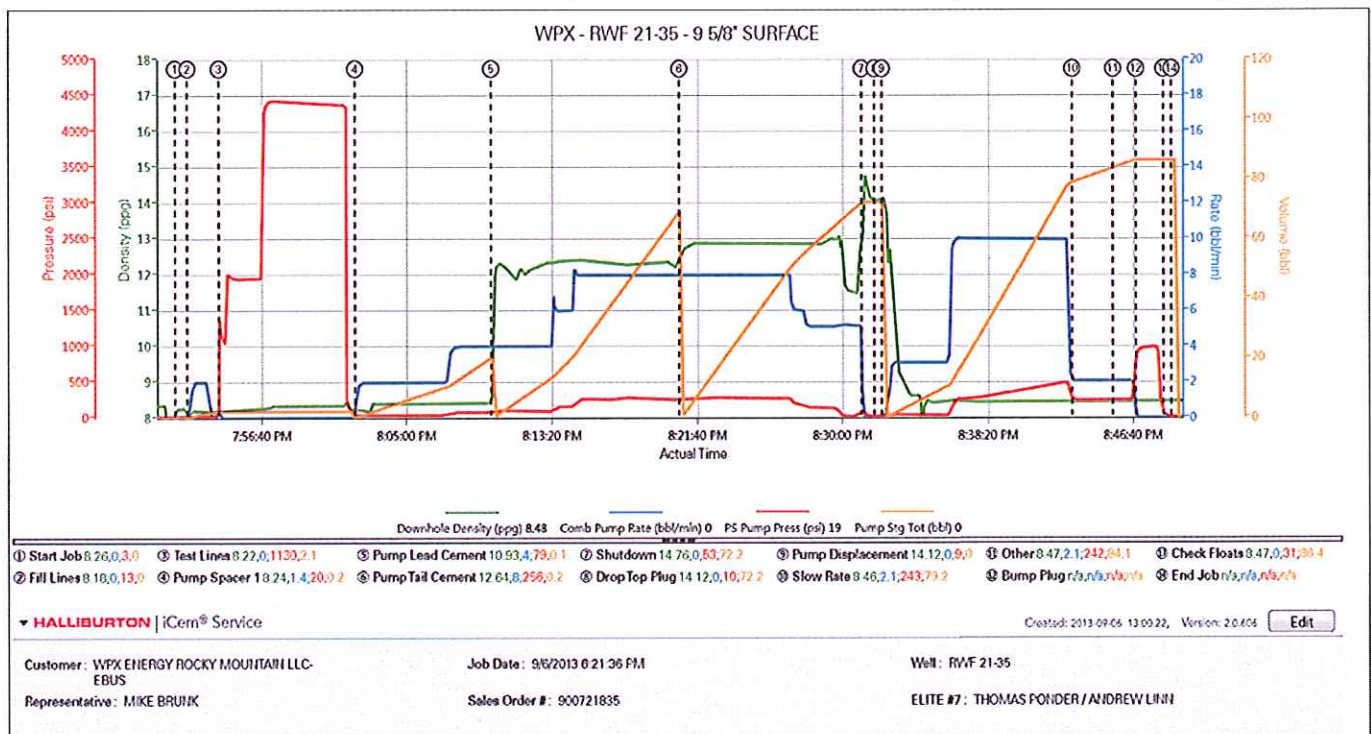
Pump Cement	09/07/2013 01:39		0.5	23			26.0	115 SKS 15.8 PPG 1.15 FT3/SK 4.99 GAL/SK, PUMPED CEMENT TO SURFACE, SHUTDOWN, CEMENT FELL, PUMPED MORE CEMENT TO SURFACE, SHUTDOWN, CEMENT FELL, PUMPED AGAIN AND WAITED TO SEE HOW FAR IT WOULD FALL
Shutdown	09/07/2013 02:27							CEMENT FELL 3" IN 8 MINS PUMPED THE REMAING 4 BBL OF CEMENT LEFT ON TRUCK TO FILL INTO THE CELLAR CEMENT STAYED AT SURFACE
End Job	09/07/2013 02:30							CEMENT REMAINED AT SURFACE CUSTOMER RELEASED CREW

1.5 Job Event Log

Time	Description	Graph Label	Downhole Density (ppg)	Combined Pump Rate (bbt/min)	Pass-Side Pump Pressure (psi)	Pump Stage Total (bbt)	Comment
07:51:47	Start Job	Start Job	8.26	0.00	3.00	0.00	
07:52:30	Prime Pumps	Fill Lines	8.18	0.00	13.00	0.00	
07:54:19	Test Lines	Test Lines	8.22	0.00	1130.00	2.10	
08:02:09	Pump Spacer 1	Pump Spacer 1	8.24	1.40	20.00	0.20	
08:09:57	Pump Lead Cement	Pump Lead Cement	10.52	4.00	78.00	20.60	
08:20:43	Pump Tail Cement	Pump Tail Cement	12.63	8.00	256.00	0.10	
08:31:12	Shutdown	Shutdown	14.57	0.00	58.00	72.20	
08:31:57	Drop Top Plug	Drop Top Plug	14.12	0.00	10.00	72.20	
08:32:22	Pump Displacement	Pump Displacement	14.12	0.00	9.00	72.20	
08:43:17	Slow Rate	Slow Rate	8.46	2.10	243.00	79.20	
08:45:37	Other	Other	8.47	2.10	242.00	84.10	
08:46:56	Bump Plug	Bump Plug	8.49	0.00	944.00	86.40	
08:48:31	Check Floats	Check Floats	8.47	0.00	31.00	86.40	
08:48:59	End Job	End Job	8.47	0.00	8.00	86.40	

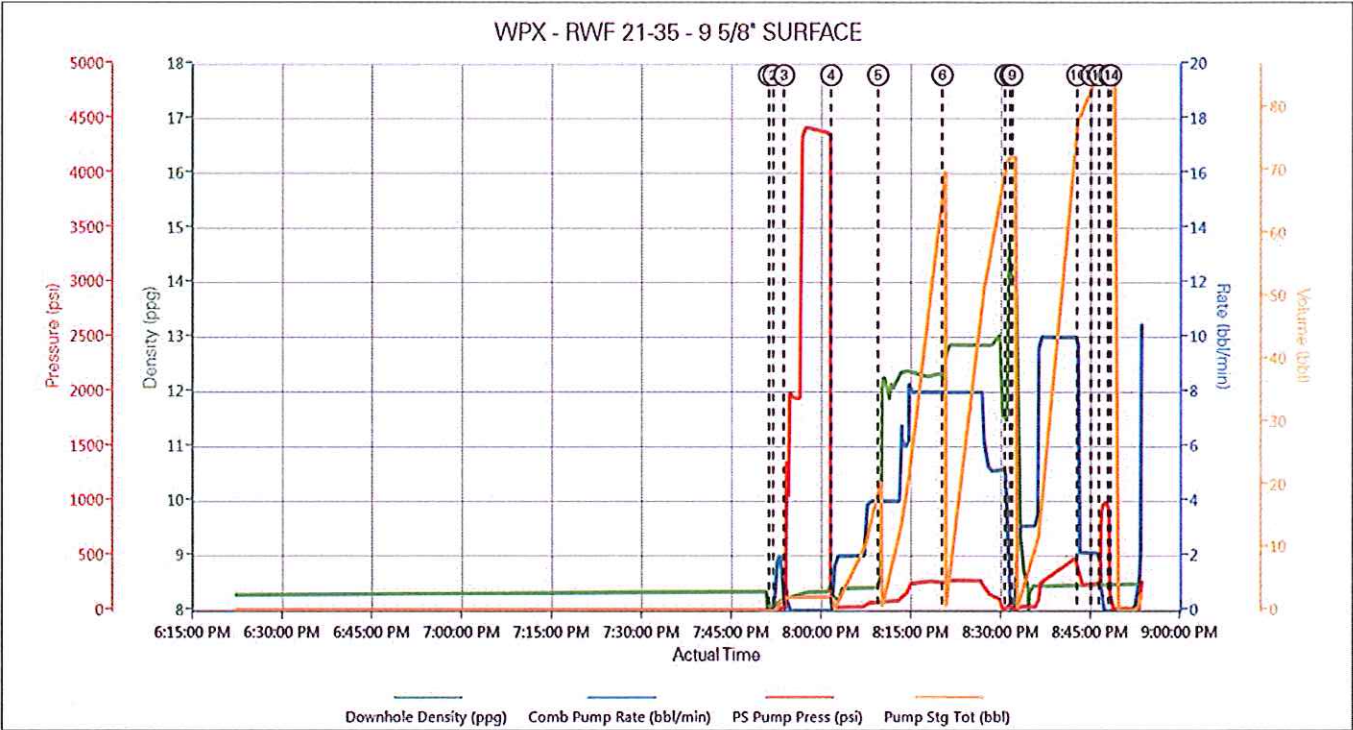
2.0 Attachments

2.1 CHART EVENTS.png



3.0 Custom Graphs

3.1 Custom Graph

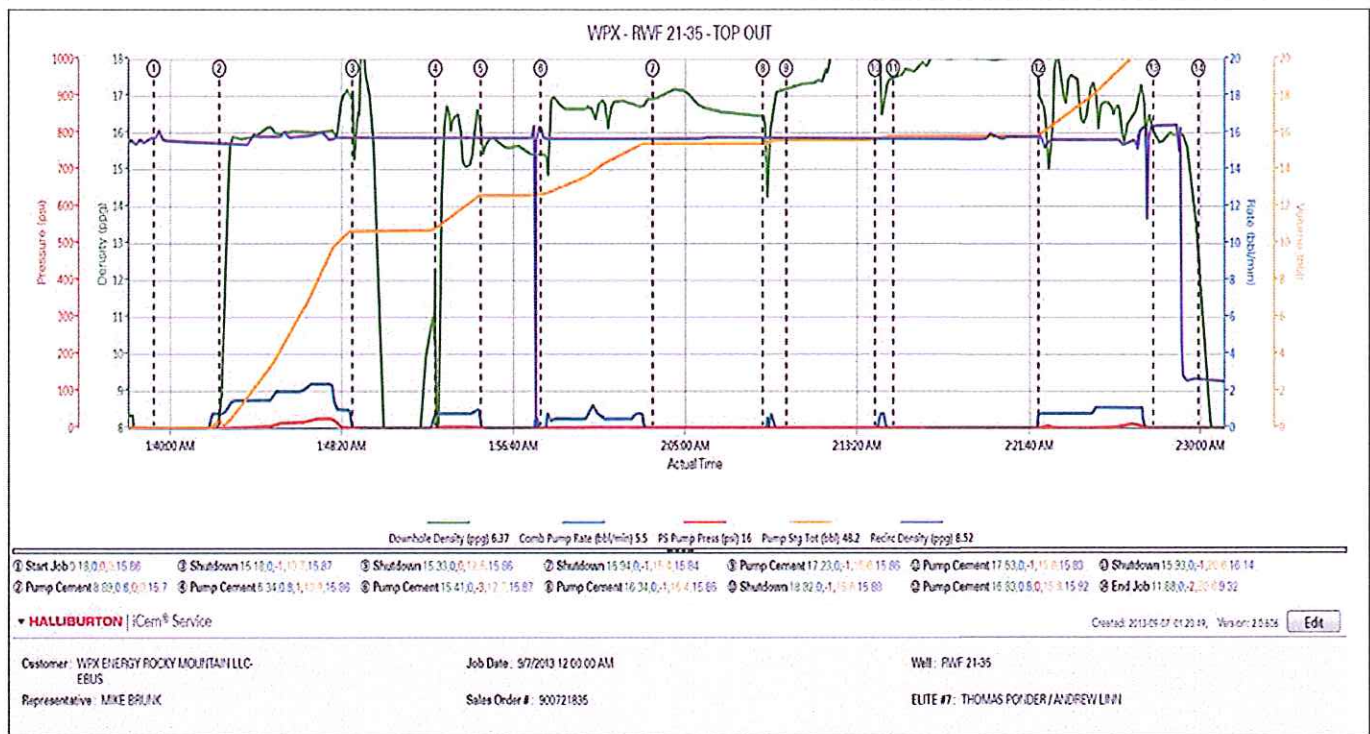


1.5 Job Event Log

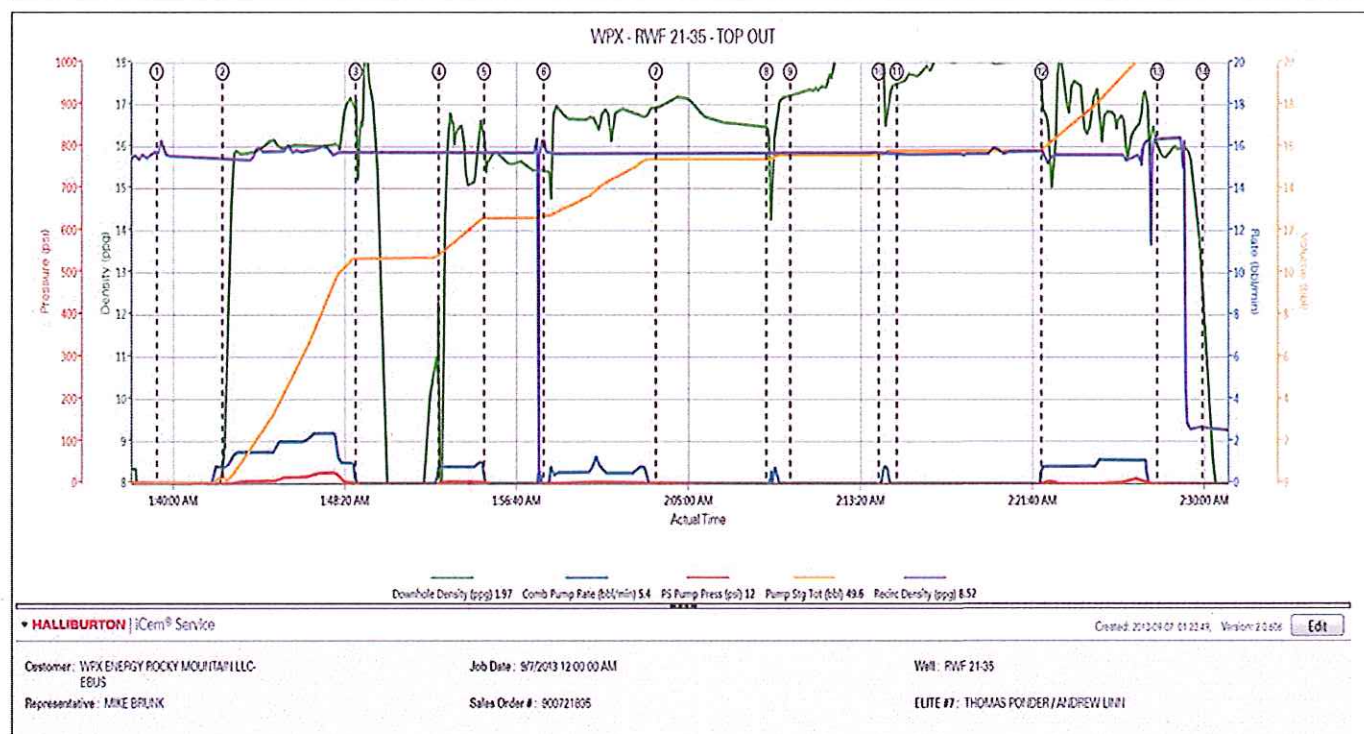
Time	Description	Graph Label	Downhole Density (ppg)	Combined Pump Rate (bbl/min)	Pass-Side Pump Pressure (psi)	Pump Stage Total (bbl)	Recirc Density (ppg)	Comment
01:39:17	Start Job	Start Job	0.18	0.00	0.00	0.00	15.86	
01:42:28	Pump Cement	Pump Cement	8.67	0.80	0.00	0.00	15.70	
01:48:56	Shutdown	Shutdown	15.18	0.00	-1.00	10.70	15.87	
01:52:58	Pump Cement	Pump Cement	6.34	0.80	1.00	10.90	15.87	
01:55:10	Shutdown	Shutdown	15.33	0.00	0.00	12.60	15.86	
01:58:04	Pump Cement	Pump Cement	15.41	0.00	-3.00	12.70	15.87	
02:03:30	Shutdown	Shutdown	16.94	0.00	-1.00	15.40	15.84	
02:08:51	Pump Cement	Pump Cement	16.34	0.00	-1.00	15.40	15.86	
02:09:59	Shutdown	Shutdown	17.23	0.00	-1.00	15.60	15.85	
02:14:17	Pump Cement	Pump Cement	18.82	0.00	-1.00	15.60	15.89	
02:15:10	Shutdown	Shutdown	17.53	0.00	-1.00	15.80	15.83	
02:22:11	Pump Cement	Pump Cement	16.83	0.80	0.00	15.90	15.92	
02:27:48	Shutdown	Shutdown	15.93	0.00	-1.00	20.60	16.14	
02:30:00	End Job	End Job	11.88	0.00	-2.00	20.60	9.32	

2.0 Attachments

2.1 TOP OUT CHART WITH EVENTS.png



2.2 TOP OUT CHART WITHOUT EVENTS.png



3.0 Custom Graphs

3.1 Custom Graph

