

**WPX ENERGY ROCKY MOUNTAIN LLC-EBUS**

RG 341-15-298

Cyclone/29

**Post Job Summary**  
**Cement Surface Casing**

Date Prepared: 02/15/2014

Submitted by: Grand Junction Cement Engineering

# HALLIBURTON

## Cementing Job Summary

***The Road to Excellence Starts with Safety***

Sold To #: 300721				Ship To #: 3124395				Quote #:				Sales Order #: 901116578															
Customer: WPX ENERGY ROCKY MOUNTAIN LLC-EBUS								Customer Rep: Ragsdale, Ted																			
Well Name: RG						Well #: 341-15-298				API/UWI #: 05-013-11793																	
Field: SULPHUR CREEK				City (SAP): MEEKER				County/Parish: Rio Blanco				State: Colorado															
Lat: N 39.881 deg. OR N 39 deg. 52 min. 50.286 secs.								Long: W 108.367 deg. OR W -109 deg. 37 min. 59.383 secs.																			
Contractor: Cyclone						Rig/Platform Name/Num: Cyclone 29																					
Job Purpose: Cement Multiple Stages																											
Well Type: Development Well						Job Type: Cement Multiple Stages																					
Sales Person: MAYO, MARK						Srvc Supervisor: KEANE, JOHN				MBU ID Emp #: 486519																	
Job Personnel																											
HES Emp Name			Exp Hrs	Emp #	HES Emp Name			Exp Hrs	Emp #	HES Emp Name			Exp Hrs	Emp #													
EICKHOFF, ROBERT Edward			12	495311	KEANE, JOHN Donovan			12	486519	MARTIN, DILLON Ray			12	478664													
WESTFALL, DUSTIN A			12	555858																							
Equipment																											
HES Unit #		Distance-1 way		HES Unit #		Distance-1 way		HES Unit #		Distance-1 way		HES Unit #		Distance-1 way													
10616651C		60 mile		10867423		60 mile		10867425		60 mile		10876398		60 mile													
10897891		60 mile		11259881		60 mile		11562538		60 mile		11808827		60 mile													
Job Hours																											
Date		On Location Hours		Operating Hours		Date		On Location Hours		Operating Hours		Date		On Location Hours		Operating Hours											
02/13/2014		5		0		02/14/2014		7		3.5																	
TOTAL												Total is the sum of each column separately															
Job								Job Times																			
Formation Name										Date		Time		Time Zone													
Formation Depth (MD) Top						Bottom				Called Out		14 - Feb - 2014		13:00		MST											
Form Type						BHST				On Location		14 - Feb - 2014		19:00		MST											
Job depth MD				3201. ft		Job Depth TVD		3201. ft		Job Started		15 - Feb - 2014		01:18		MST											
Water Depth						Wk Ht Above Floor		5. ft		Job Completed		15 - Feb - 2014		04:56		MST											
Perforation Depth (MD) From						To				Departed Loc		15 - Feb - 2014		07:01		MST											
Well Data																											
Description		New / Used	Max pressure psig	Size in	ID in	Weight lbm/ft	Thread		Grade	Top MD ft	Bottom MD ft	Top TVD ft	Bottom TVD ft														
Tools and Accessories																											
Type	Size	Qty	Make	Depth	Type	Size	Qty	Make	Depth	Type	Size	Qty	Make														
Guide Shoe					Packer					Top Plug																	
Float Shoe					Bridge Plug					Bottom Plug																	
Float Collar					Retainer					SSR plug set																	
Insert Float										Plug Container	9.625	1															
Stage Tool										Centralizers																	
Miscellaneous Materials																											
Gelling Agt				Conc				Surfactant				Conc				Acid Type				Qty				Conc		%	
Treatment Fld				Conc				Inhibitor				Conc				Sand Type				Size				Qty			
Fluid Data																											
Stage/Plug #: 1																											
Fluid #	Stage Type			Fluid Name				Qty	Qty uom	Mixing Density lbm/gal	Yield ft3/sk	Mix Fluid Gal/sk	Rate bbl/min	Total Mix Fluid Gal/sk													
Stage/Plug #: 1																											
Fluid #	Stage Type			Fluid Name				Qty	Qty uom	Mixing Density lbm/gal	Yield ft3/sk	Mix Fluid Gal/sk	Rate bbl/min	Total Mix Fluid Gal/sk													

Stage/Plug #: 1									
1	Fresh Water Spacer		40.00	bbl	8.33	.0	.0	4	
2	1st Stage HLC Lead Cement	ECONOCEM (TM) SYSTEM (452992)	780.0	sacks	12.8	1.77	9.34	8	9.34
	0.25 lbm	POLY-E-FLAKE (101216940)							
	0.35 %	HR-5, 50 LB SK (100005050)							
	9.34 Gal	FRESH WATER							
3	1st Stage Varicem Tail Cement	VARICEM (TM) CEMENT (452009)	325.0	sacks	12.8	1.96	10.95	8	10.95
	0.3 lbm	POLY-E-FLAKE (101216940)							
	10.95 Gal	FRESH WATER							
4	Displacement		245.00	bbl	8.33	.0	.0	10	
5	Fresh Water Spacer		50.00	bbl	8.33	.0	.0	6	
6	2nd Stage VariCem Cement	VARICEM (TM) CEMENT (452009)	765.0	sacks	12.8	1.96	10.95	8	10.95
	0.3 lbm	POLY-E-FLAKE (101216940)							
	10.95 Gal	FRESH WATER							
7	Displacement		101.00	bbl	8.33	.0	.0	10	
Calculated Values		Pressures		Volumes					
Displacement		Shut In: Instant		Lost Returns		Cement Slurry	626.3	Pad	
Top Of Cement	SURFACE	5 Min		Cement Returns	100	Actual Displacement		Treatment	
Frac Gradient		15 Min		Spacers		Load and Breakdown		Total Job	1033
Rates									
Circulating	9.1	Mixing		8	Displacement	10	Avg. Job		9
Cement Left In Pipe	Amount	0 ft	Reason	Shoe Joint					
Frac Ring # 1 @	ID	Frac ring # 2 @	ID	Frac Ring # 3 @	ID	Frac Ring # 4 @	ID		
The Information Stated Herein Is Correct				Customer Representative Signature					



*The Road to Excellence Starts with Safety*

Sold To #: 300721	Ship To #: 3124395	Quote #:	Sales Order #: 901116578
Customer: WPX ENERGY ROCKY MOUNTAIN LLC-EBUS	Customer Rep: Ragsdale, Ted		
Well Name: RG	Well #: 341-15-298	API/UWI #: 05-013-11793	
Field: SULPHUR CREEK	City (SAP): MEEKER	County/Parish: Rio Blanco	State: Colorado
Legal Description:			
Lat: N 39.881 deg. OR N 39 deg. 52 min. 50.286 secs.		Long: W 108.367 deg. OR W -109 deg. 37 min. 59.383 secs.	
Contractor: Cyclone	Rig/Platform Name/Num: Cyclone 29		
Job Purpose: Cement Multiple Stages	Ticket Amount:		
Well Type: Development Well	Job Type: Cement Multiple Stages		
Sales Person: MAYO, MARK	Srv Supervisor: KEANE, JOHN	MBU ID Emp #: 486519	

Activity Description	Date/Time	Cht #	Rate bbl/min	Volume bbl		Pressure psig		Comments
				Stage	Total	Tubing	Casing	
Pre-Job Safety Meeting	02/13/2014 01:00							WITH HES, WPX, AND CYCLONE 29
Start Job	02/13/2014 01:18							TP 3201 FT, TD 3200 FT, DV TOOL AT 1304 FT, HOLE 14.75 IN TO 1250 FT 13.5 IN FROM 1250 FT TO 3200 FT, CSG 9.625 IN 36 LB/FT J-55, SHOE 26.21 FT, MWT 9.4 LB/GAL, RIG CIRCULATING AT 9 BBL/MIN, 65 PSI,
Pump Water	02/13/2014 01:22		2	2			65.0	FILL LINES
Test Lines	02/13/2014 01:26							LOW TEST AT 1575 PSI, HIGH TEST AT 3028 PSI, PRESSURE HOLDING
Pump Spacer 1	02/13/2014 01:32		4	40			95.0	FRESH WATER SPACER
Pump 1st Stage Lead Slurry	02/13/2014 01:56		8	246			550.0	MIXED AT 12.8 LB/GAL, 780 SKS, 1.77 FT3/SK, 9.34 GAL/SK, 105 LBS TUFF FIBER ADDED TO SLURRY, DENSITY VERIFIED USING PRESSURIZED MUD SCALES
Pump 1st Stage Tail Slurry	02/13/2014 02:27		8	113.4			560.0	MIXED AT 12.8 LB/GAL, 325 SKS, 1.96 FT3/SK, 10.95 GAL/SK, DENSITY VERIFIED USING PRESSURIZED MUD SCALES
Shutdown	02/13/2014 02:44						289.0	

Sold To #: 300721

Ship To #: 3124395

Quote #:

Sales Order #: 901116578

SUMMIT Version: 7.3.0109

Saturday, February 15, 2014 03:32:00

Activity Description	Date/Time	Cht #	Rate bbl/min	Volume bbl		Pressure psig		Comments
				Stage	Total	Tubing	Casing	
Drop Plug	02/13/2014 02:47							OPENED THE PLUG CONTAINER TO MANUALLY LAUNCH SHUT-OFF PLUG
Pump Displacement	02/13/2014 02:50		10	90			489.0	9.4 LB/GAL WATER BASED MUD
Slow Rate	02/13/2014 03:02		4	15			143.0	SLOWED FOR SHUT-OFF PLUG TO PASS THROUGH THE TOOL
Pump Displacement	02/13/2014 03:05		10	130			779.0	9.4 LB/GAL WATER BASED MUD
Slow Rate	02/13/2014 03:19		2	10			353.0	SLOWED AT 235 BBL AWAY
Bump Plug	02/13/2014 03:23		2				371.0	PLUG BUMPED AT CALCULATED DISPLACEMENT
Check Floats	02/13/2014 03:26							FLOATS HOLDING, 1 BBL RETURNED TO THE TRUCK
Open Multiple Stage Cementer	02/13/2014 03:41						673.0	DROPPED MSC OPENING DEVICE, WAITED FOR 10 MIN, PRESSURED UP TO 673 PSI, TOOL OPENED
Circulate Well	02/13/2014 03:44		6	50			115.0	FRESH WATER, RETURNS AT 15 BBL AWAY
Pump 2nd Stage Tail Slurry	02/13/2014 03:55		8	267			550.0	MIXED AT 12.8 LB/GAL, 765 SKS, 1.96 FT3/SK, 10.95 GAL/SK, DENSITY VERIFIED USING PRESSURIZED MUD SCALES
Shutdown	02/13/2014 04:31						330.0	
Drop Top Plug	02/13/2014 04:33							PLUG LAUNCHED
Pump Displacement	02/13/2014 04:36		10	91			790.0	FRESH WATER
Slow Rate	02/13/2014 04:47		2	10			355.0	SLOWED AT 91 BBL AWAY ON DISPLACEMENT
Bump Plug	02/13/2014 04:51		2				379.0	PLUG BUMPED AT CALCULATED DISPLACEMENT, CLOSED MSC TOOL
Activity Description	Date/Time	Cht	Rate bbl/min	Volume bbl		Pressure psig		Comments

Sold To # : 300721

Ship To # :3124395

Quote # :

Sales Order # : 901116578

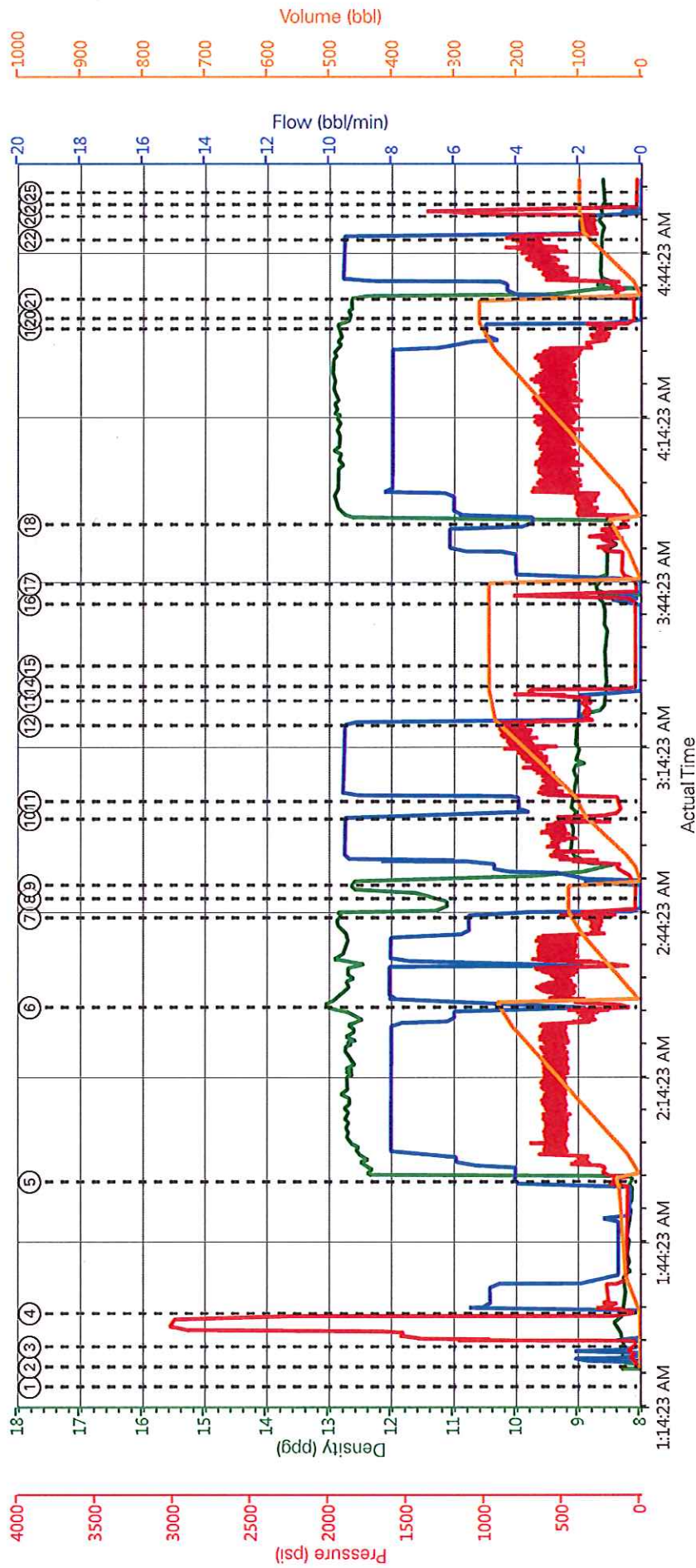
SUMMIT Version: 7.3.0109

Saturday, February 15, 2014 03:32:00



		#		Stage	Total	Tubing	Casing	
Check Floats	02/13/2014 04:53						1179. 0	FLOATS HOLDING, 1 BBL RETURNED TO THE TRUCK
End Job	02/13/2014 04:56							GOOD CIRCULATION THROUGHOUT THE JOB, NO ADD HOURS CHARGED, NO DERRICK CHARGE, RIG USED NO SUGAR , PIPE WAS STATIC, 100 BBL CEMENT CIRCULATED TO SURFACE, DID NOT START TIME UNTIL 2300 WHEN ALL CEMENT WAS LOADED ON LOCATION
Pre-Rig Down Safety Meeting	02/13/2014 05:15							WITH HES
Rig-Down Equipment	02/13/2014 05:30							
Pre-Convoy Safety Meeting	02/13/2014 06:45							WITH HES
Crew Leave Location	02/13/2014 07:00							
Comment	02/13/2014 07:01							THANKS FOR USING HALLIBURTON, JOHN KEANE AND CREW
Call Out	02/13/2014 13:00							
Pre-Convoy Safety Meeting	02/13/2014 15:00							WITH HES
Arrive At Loc	02/13/2014 19:00							
Assessment Of Location Safety Meeting	02/13/2014 19:10							WITH HES
Pre-Rig Up Safety Meeting	02/13/2014 22:50							WITH HES
Rig-Up Equipment	02/13/2014 23:00							

WPX - RG-341-15-298 - 9.625 IN SURFACE



- ① Start Job n/a;n/a;n/a
- ② Fill Lines 8.31;0.24;6.0
- ③ Test Lines 8.32;0.34;9.1;2.06
- ④ Pump Fresh Water Spacer 8.31;2.05;114.6;0.17
- ⑤ Pump 1st Stage Lead Slurry 8.15;4.03;182.1;39.38
- ⑥ Pump 1st Stage Tail Slurry 13.02;5.38;293.66;229.64
- ⑦ Shutdown 12.82;5.54;289.91;114.4
- ⑧ Drop Plug 11.51;0.33;0.3;116.34
- ⑨ Pump Displacement 12.59;0.78;37.72;0.36
- ⑩ Slow Rate 9.09;5.48;216.79;90.78
- ⑪ Resume 9.07;3.93;154.91;103.93
- ⑫ Slow Rate 9.06;8.48;732.42;233.66
- ⑬ Bump Plug 8.61;1.99;357.41;243.45
- ⑭ Check Floats 8.53;0.33;0.3;244.32
- ⑮ Drop Opening Device For Multiple Stage Cementer 8.56;0.33;0.3;244.32
- ⑯ Open Multiple Stage Cementer 8.58;0.91;37.72;244.51
- ⑰ Circulate Well 8.68;0.33;0.3;0
- ⑱ Pump 2nd Stage Tail Slurry 8.58;3.5;100.53;50.46
- ⑲ Shutdown 12.91;5.01;258.97;259.51
- ⑳ Drop Top Plug 12.68;0.48;0.3;261.05
- ㉑ Pump Displacement 10.61;2.94;137.1;0.9
- ㉒ Slow Rate 8.65;9.53;762.42;90.71
- ㉓ Bump Plug / Close MSC Tool 8.64;0.22;113.99;100.38
- ㉔ Check Floats 8.58;0.31;16;100.43
- ㉕ End Job 8.56;0.31;16;100.43

➤ **HALLIBURTON** | iCem® Service

Created: 2014-02-14 05:41:31, Version: 3.0.121

Customer: WPX ENERGY ROCKY MOUNTAIN LLC-  
EBUS

Job Date: 2/14/2014 1:20:59 AM

Well: RG-341-15-298

Representative: ANDREW BRUNK

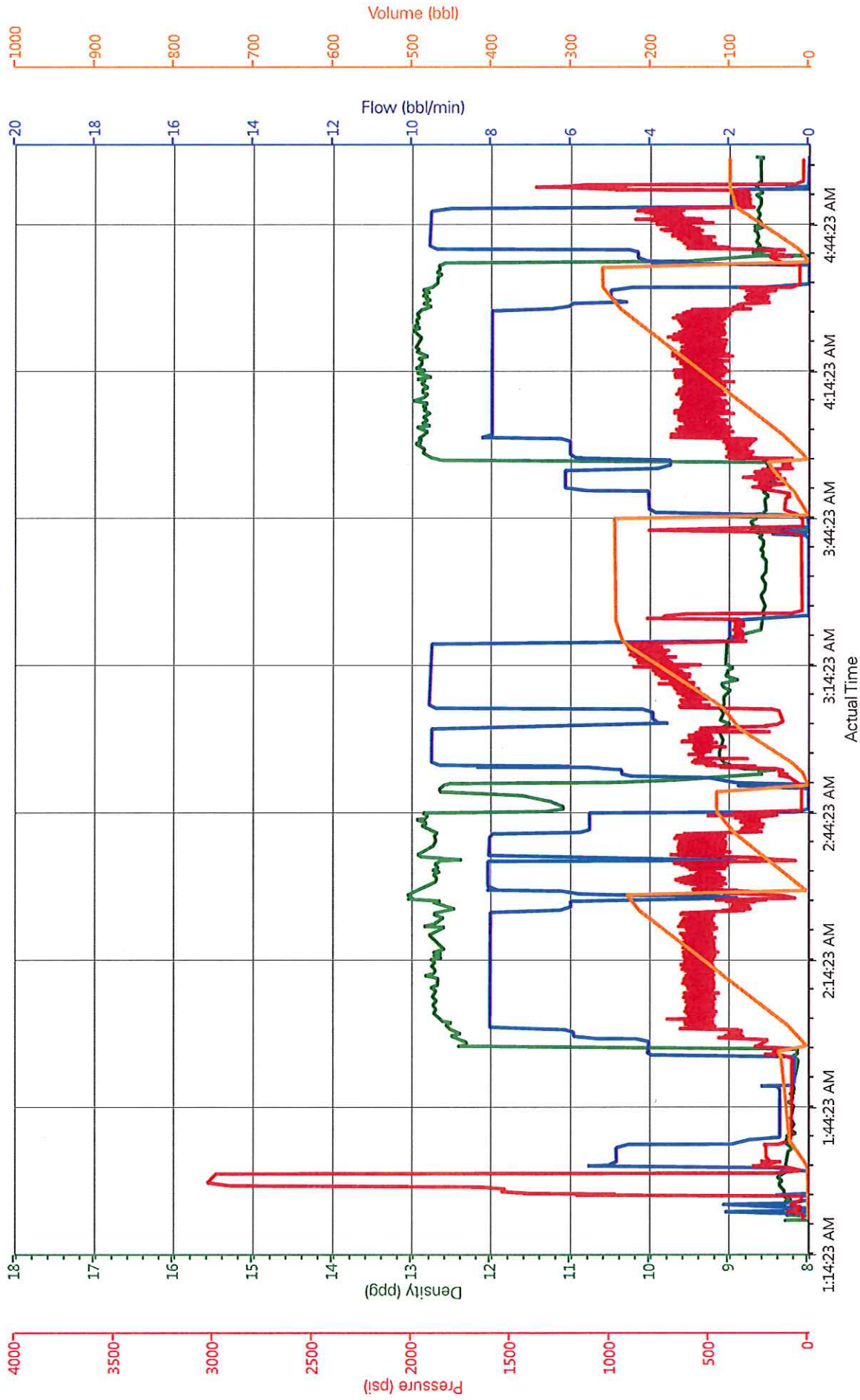
Sales Order #: 901116578

ELITE 4: JOHN KEANE / ROB EICKHOFF

Edit



# WPX - RG- 341-15-298 - 9.625 IN SURFACE



DH Density (ppg)    Comb Pump Rate (bbl/min)    PS Pump Press (psi)    Pump Stg Tot (bbl)

▼ **HALLIBURTON** | iCem® Service

Created: 2014-02-14 05:41:31, Version: 3.0.121

Edit

Customer: WPX ENERGY ROCKY MOUNTAIN LLC-EBUS

Job Date: 2/14/2014 1:20:59 AM

Well: RG-341-15-298

Representative: ANDREW BRUNK

Sales Order #: 901116578

ELITE 4: JOHN KEANE / ROB EICKHOFF



# HALLIBURTON

## Water Analysis Report

Company: WPX  
Submitted by: JOHN KEANE  
Attention: CHUCK ROSS  
Lease: RG  
Well #: 341-15-298

Date: 2/13/2014  
Date Rec.: 2/13/2014  
S.O.# 901116578  
Job Type: TWO-STAGE

Specific Gravity	<i>MAX</i>	<b>1</b>
pH	<i>8</i>	<i>7.7</i>
Potassium (K)	<i>5000</i>	<b>250 Mg / L</b>
Calcium (Ca)	<i>500</i>	<b>425 Mg / L</b>
Iron (FE2)	<i>300</i>	<b>0 Mg / L</b>
Chlorides (Cl)	<i>3000</i>	<b>0 Mg / L</b>
Sulfates (SO <sub>4</sub> )	<i>1500</i>	<b>&lt;200 Mg / L</b>
Chlorine (Cl <sub>2</sub> )		<b>0 Mg / L</b>
Temp	<i>40-80</i>	<b>57 Deg</b>
Total Dissolved Solids		<b>690 Mg / L</b>

Respectfully: JOHN KEANE

Title: CEMENTING SUPERVISOR

Location: Grand Junction, CO

**NOTICE:**

This report is limited to the described sample tested. Any person using or relying on this report agrees that Halliburton shall not be liable for any loss or damage whether due to act or omission resulting from such report or its use.