

BONANZA CREEK ENERGY INC.

WELD COUNTY, COLORADO (NAD 83)

NE NW SEC. 6 T4N R62W 6th P.M.

STATE SEVENTY HOLES F-J-6HNB

ORIGINAL WELLBORE

17 June, 2014

Plan: PROPOSAL #1





Project: WELD COUNTY, COLORADO (NAD 83)
Site: NE NW SEC. 6 T4N R62W 6th P.M.
Well: STATE SEVENTY HOLES F-J-6HNB
Wellbore: ORIGINAL WELLBORE
Design: PROPOSAL #1

ANNOTATIONS									
TVD	MD	Inc	Azi	+N/-S	+E/-W	VSect	Dep	Annotation	
1000.0	1000.0	0.00	0.00	0.0	0.0	0.0	0.0	START NUDGE (2°/100ft BUR)	
1738.9	1747.4	14.95	323.59	78.0	-57.5	-71.4	96.9	EOB TO 14.95° INC	
4972.8	5094.5	14.95	323.59	772.8	-570.1	-707.2	960.3	END OF TANGENT	
5711.7	5841.9	0.00	0.00	850.8	-627.6	-778.6	1057.2	EOD TO VERTICAL	
5741.7	5871.9	0.00	0.00	850.8	-627.6	-778.6	1057.2	KOP (12°/100ft BUR)	
6202.9	6496.9	75.00	177.78	497.2	-613.9	-428.5	1411.1	START OF TANGENT	
6228.8	6596.9	75.00	177.78	400.7	-610.1	-332.9	1507.7	END OF TANGENT	
6245.0	6721.9	90.00	177.78	277.2	-605.4	-210.7	1631.3	7" ICP - STATE SEVENTY HOLES F-J-6HNB *NEW*	
6245.0	11060.7	90.00	177.79	-4058.4	-437.7	4081.9	5970.1	BHL - STATE SEVENTY HOLES F-J-6HNB	

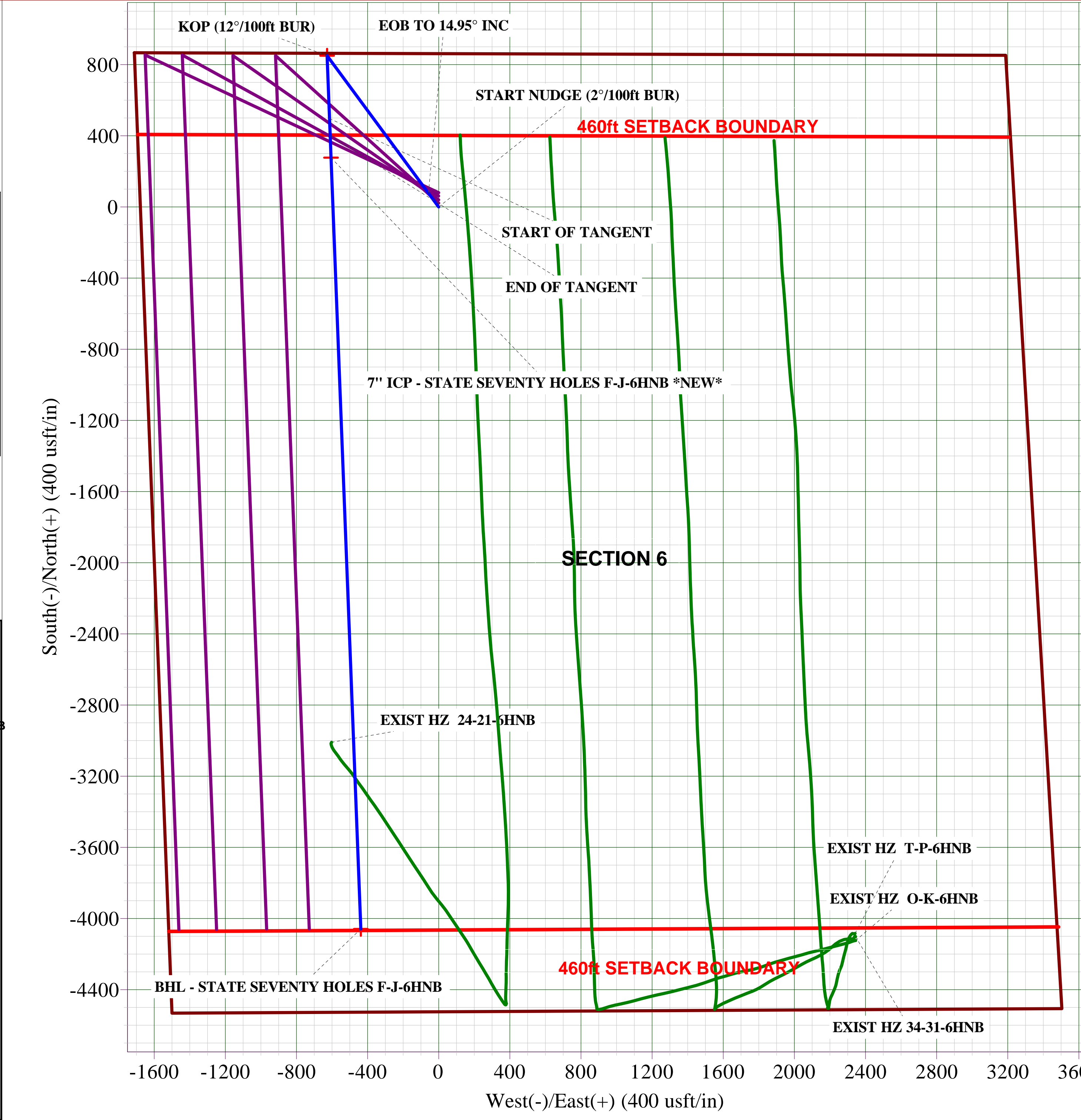
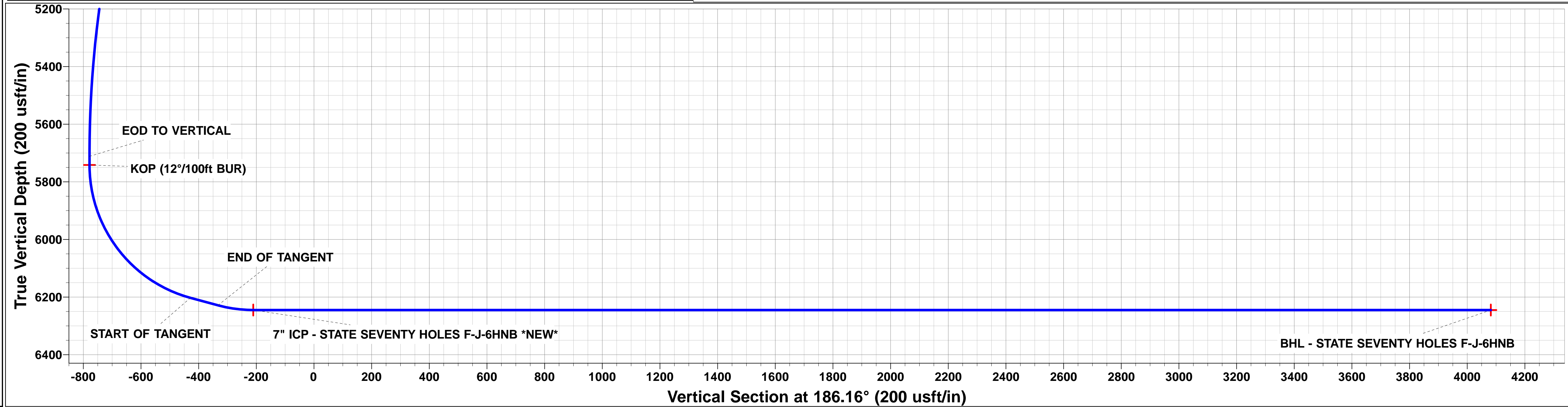
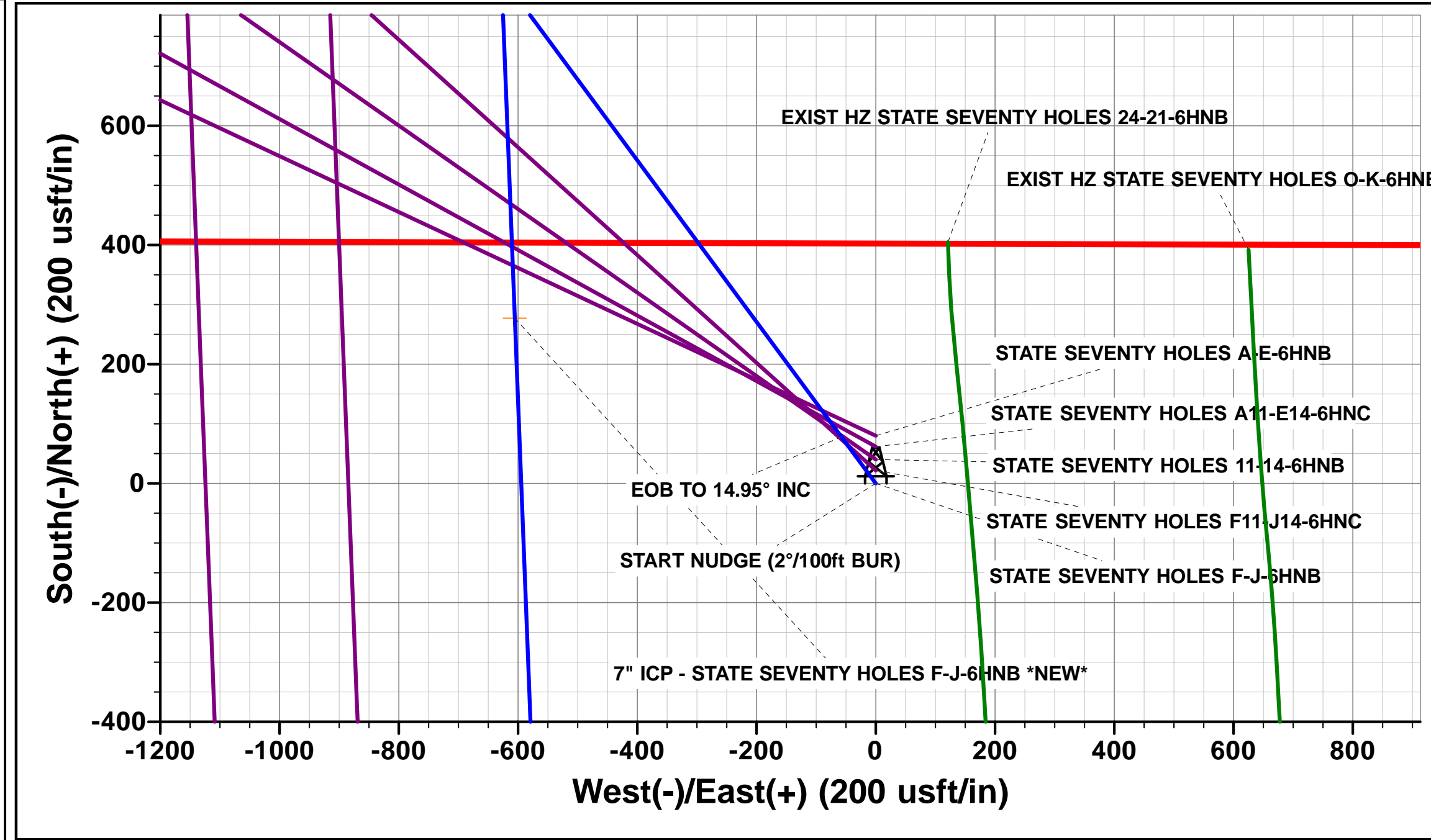
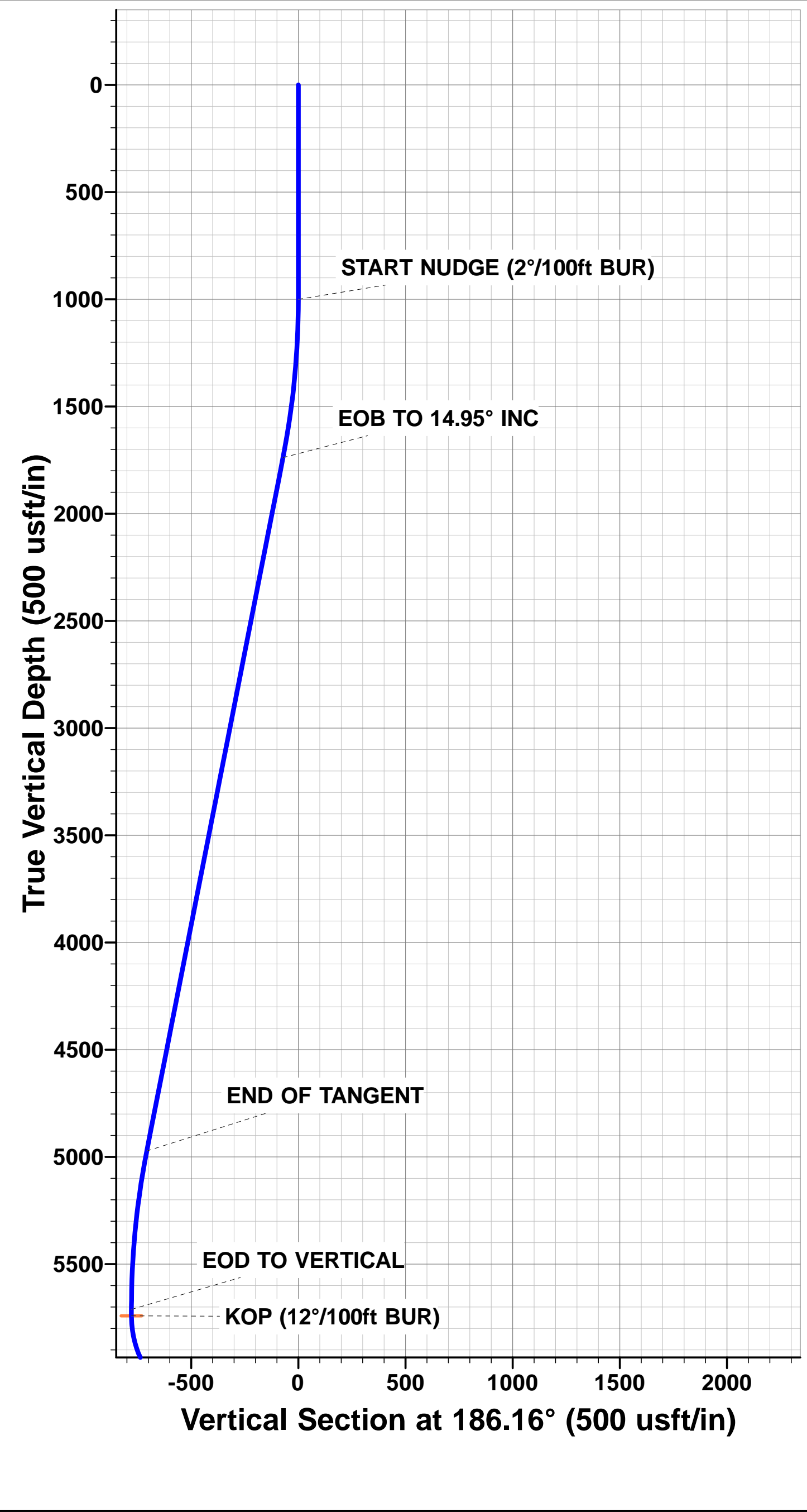
PROPOSED LOCAL COORDINATES:

SHL: 868ft FNL & 1675ft FWL Sec 6

7" ICP *NEW*: 589ft FNL & 1081ft FWL Sec 6

BHL: 470ft FSL & 1081ft FWL Sec 6

WELLBORE TARGET DETAILS (LAT/LONG)					
Name	TVD	+N/-S	+E/-W	Latitude	Longitude
KOP - STATE SEVENTY HOLES F-J-6HNB	5741.7	850.8	-627.6	40.349035	-104.373652
7" ICP - STATE SEVENTY HOLES F-J-6HNB *NEW*	6245.0	277.2	-605.4	40.347461	-104.373572
BHL - STATE SEVENTY HOLES F-J-6HNB	6245.0	-4058.4	-437.7	40.335560	-104.372970



Planning Report



Database:	EDM 5000.1 Single User Db	Local Co-ordinate Reference:	Well STATE SEVENTY HOLES F-J-6HNB
Company:	BONANZA CREEK ENERGY INC.	TVD Reference:	KB-EST @ 4555.0usft (Original Well Elev)
Project:	WELD COUNTY, COLORADO (NAD 83)	MD Reference:	KB-EST @ 4555.0usft (Original Well Elev)
Site:	NE NW SEC. 6 T4N R62W 6th P.M.	North Reference:	True
Well:	STATE SEVENTY HOLES F-J-6HNB	Survey Calculation Method:	Minimum Curvature
Wellbore:	ORIGINAL WELLBORE		
Design:	PROPOSAL #1		

Project	WELD COUNTY, COLORADO (NAD 83)		
Map System:	US State Plane 1983	System Datum:	Mean Sea Level
Geo Datum:	North American Datum 1983		
Map Zone:	Colorado Northern Zone		Using geodetic scale factor

Site	NE NW SEC. 6 T4N R62W 6th P.M.		
Site Position:		Northing:	1,371,225.44 usft
From:	Lat/Long	Easting:	3,314,564.40 usft
Position Uncertainty:	0.0 usft	Slot Radius:	1.10000ft
		Latitude:	40.346920
		Longitude:	-104.371400
		Grid Convergence:	0.73 °

Well	STATE SEVENTY HOLES F-J-6HNB		
Well Position	+N/-S	-80.2 usft	Northing:
	+E/-W	0.0 usft	Easting:
Position Uncertainty		0.0 usft	Wellhead Elevation:
			Latitude:
			Longitude:
			Ground Level:

Wellbore	ORIGINAL WELLBORE				
Magnetics	Model Name	Sample Date	Declination (°)	Dip Angle (°)	Field Strength (nT)
	IGRF2010	16/06/2014	8.24	66.97	52,830

Design	PROPOSAL #1			
Audit Notes:				
Version:	Phase:	PROTOTYPE	Tie On Depth:	0.0
Vertical Section:	Depth From (TVD) (usft)	+N/-S (usft)	+E/-W (usft)	Direction (°)
	0.0	0.0	0.0	186.16

Plan Sections											
MD (usft)	Inc (°)	Azi (°)	Vertical Depth	SS (usft)	+N/-S (usft)	+E/-W (usft)	Dogleg Rate (°/100usf)	Build Rate (°/100usf)	Turn Rate (°/100usf)	TFO (°)	Target
0.0	0.00	0.00	0.0	-4,555.0	0.0	0.0	0.00	0.00	0.00	0.00	
1,000.0	0.00	0.00	1,000.0	-3,555.0	0.0	0.0	0.00	0.00	0.00	0.00	
1,747.4	14.95	323.59	1,738.9	-2,816.1	78.0	-57.5	2.00	2.00	0.00	323.59	
5,094.5	14.95	323.59	4,972.8	417.8	772.8	-570.1	0.00	0.00	0.00	0.00	
5,841.9	0.00	0.00	5,711.7	1,156.7	850.8	-627.6	2.00	-2.00	0.00	180.00	
5,871.9	0.00	0.00	5,741.7	1,186.7	850.8	-627.6	0.00	0.00	0.00	0.00	KOP - STATE SEVI
6,496.9	75.00	177.78	6,202.9	1,647.9	497.2	-613.9	12.00	12.00	0.00	177.78	
6,596.9	75.00	177.78	6,228.8	1,673.8	400.7	-610.1	0.00	0.00	0.00	0.00	
6,721.9	90.00	177.78	6,245.0	1,690.0	277.2	-605.4	12.00	12.00	0.00	0.00	
11,060.7	90.00	177.79	6,245.0	1,690.0	-4,058.4	-437.7	0.00	0.00	0.00	83.38	BHL - STATE SEVI

Planning Report



Database:	EDM 5000.1 Single User Db	Local Co-ordinate Reference:	Well STATE SEVENTY HOLES F-J-6HNB
Company:	BONANZA CREEK ENERGY INC.	TVD Reference:	KB-EST @ 4555.0usft (Original Well Elev)
Project:	WELD COUNTY, COLORADO (NAD 83)	MD Reference:	KB-EST @ 4555.0usft (Original Well Elev)
Site:	NE NW SEC. 6 T4N R62W 6th P.M.	North Reference:	True
Well:	STATE SEVENTY HOLES F-J-6HNB	Survey Calculation Method:	Minimum Curvature
Wellbore:	ORIGINAL WELLBORE		
Design:	PROPOSAL #1		

Planned Survey

MD (usft)	Inc (°)	Azi (°)	TVD (usft)	SS (usft)	+N/-S (usft)	+E/-W (usft)	Vertical Section (usft)	Dogleg Rate (°/100usft)	Build Rate (°/100usft)	Turn Rate (°/100usft)
0.0	0.00	0.00	0.0	4,555.00	0.0	0.0	0.0	0.00	0.00	0.00
100.0	0.00	0.00	100.0	4,455.00	0.0	0.0	0.0	0.00	0.00	0.00
200.0	0.00	0.00	200.0	4,355.00	0.0	0.0	0.0	0.00	0.00	0.00
300.0	0.00	0.00	300.0	4,255.00	0.0	0.0	0.0	0.00	0.00	0.00
400.0	0.00	0.00	400.0	4,155.00	0.0	0.0	0.0	0.00	0.00	0.00
500.0	0.00	0.00	500.0	4,055.00	0.0	0.0	0.0	0.00	0.00	0.00
600.0	0.00	0.00	600.0	3,955.00	0.0	0.0	0.0	0.00	0.00	0.00
700.0	0.00	0.00	700.0	3,855.00	0.0	0.0	0.0	0.00	0.00	0.00
800.0	0.00	0.00	800.0	3,755.00	0.0	0.0	0.0	0.00	0.00	0.00
900.0	0.00	0.00	900.0	3,655.00	0.0	0.0	0.0	0.00	0.00	0.00
START NUDGE (2°/100ft BUR)										
1,000.0	0.00	0.00	1,000.0	3,555.00	0.0	0.0	0.0	0.00	0.00	0.00
1,100.0	2.00	323.59	1,100.0	3,455.02	1.4	-1.0	-1.3	2.00	2.00	0.00
1,200.0	4.00	323.59	1,199.8	3,355.16	5.6	-4.1	-5.1	2.00	2.00	0.00
1,300.0	6.00	323.59	1,299.5	3,255.55	12.6	-9.3	-11.6	2.00	2.00	0.00
1,400.0	8.00	323.59	1,398.7	3,156.30	22.4	-16.6	-20.5	2.00	2.00	0.00
1,500.0	10.00	323.59	1,497.5	3,057.53	35.0	-25.8	-32.1	2.00	2.00	0.00
1,600.0	12.00	323.59	1,595.6	2,959.38	50.4	-37.2	-46.1	2.00	2.00	0.00
1,700.0	14.00	323.59	1,693.1	2,861.94	68.5	-50.5	-62.7	2.00	2.00	0.00
EOB TO 14.95° INC										
1,747.4	14.95	323.59	1,738.9	2,816.05	78.0	-57.5	-71.4	2.00	2.00	0.00
1,800.0	14.95	323.59	1,789.8	2,765.23	88.9	-65.6	-81.4	0.00	0.00	0.00
1,900.0	14.95	323.59	1,886.4	2,668.61	109.7	-80.9	-100.4	0.00	0.00	0.00
2,000.0	14.95	323.59	1,983.0	2,572.00	130.4	-96.2	-119.4	0.00	0.00	0.00
2,100.0	14.95	323.59	2,079.6	2,475.38	151.2	-111.5	-138.4	0.00	0.00	0.00
2,200.0	14.95	323.59	2,176.2	2,378.77	172.0	-126.9	-157.4	0.00	0.00	0.00
2,300.0	14.95	323.59	2,272.9	2,282.15	192.7	-142.2	-176.4	0.00	0.00	0.00
2,400.0	14.95	323.59	2,369.5	2,185.53	213.5	-157.5	-195.4	0.00	0.00	0.00
2,500.0	14.95	323.59	2,466.1	2,088.92	234.2	-172.8	-214.4	0.00	0.00	0.00
2,600.0	14.95	323.59	2,562.7	1,992.30	255.0	-188.1	-233.4	0.00	0.00	0.00
2,700.0	14.95	323.59	2,659.3	1,895.69	275.8	-203.4	-252.4	0.00	0.00	0.00
2,800.0	14.95	323.59	2,755.9	1,799.07	296.5	-218.7	-271.3	0.00	0.00	0.00
2,900.0	14.95	323.59	2,852.5	1,702.45	317.3	-234.0	-290.3	0.00	0.00	0.00
3,000.0	14.95	323.59	2,949.2	1,605.84	338.0	-249.3	-309.3	0.00	0.00	0.00
3,100.0	14.95	323.59	3,045.8	1,509.22	358.8	-264.7	-328.3	0.00	0.00	0.00
3,200.0	14.95	323.59	3,142.4	1,412.60	379.5	-280.0	-347.3	0.00	0.00	0.00
3,300.0	14.95	323.59	3,239.0	1,315.99	400.3	-295.3	-366.3	0.00	0.00	0.00
3,400.0	14.95	323.59	3,335.6	1,219.37	421.1	-310.6	-385.3	0.00	0.00	0.00
3,500.0	14.95	323.59	3,432.2	1,122.76	441.8	-325.9	-404.3	0.00	0.00	0.00
3,600.0	14.95	323.59	3,528.9	1,026.14	462.6	-341.2	-423.3	0.00	0.00	0.00
3,700.0	14.95	323.59	3,625.5	929.52	483.3	-356.5	-442.3	0.00	0.00	0.00
3,800.0	14.95	323.59	3,722.1	832.91	504.1	-371.8	-461.3	0.00	0.00	0.00
3,900.0	14.95	323.59	3,818.7	736.29	524.8	-387.2	-480.3	0.00	0.00	0.00
4,000.0	14.95	323.59	3,915.3	639.68	545.6	-402.5	-499.3	0.00	0.00	0.00
4,100.0	14.95	323.59	4,011.9	543.06	566.4	-417.8	-518.3	0.00	0.00	0.00
4,200.0	14.95	323.59	4,108.6	446.44	587.1	-433.1	-537.3	0.00	0.00	0.00
4,300.0	14.95	323.59	4,205.2	349.83	607.9	-448.4	-556.3	0.00	0.00	0.00
4,400.0	14.95	323.59	4,301.8	253.21	628.6	-463.7	-575.3	0.00	0.00	0.00
4,500.0	14.95	323.59	4,398.4	156.60	649.4	-479.0	-594.3	0.00	0.00	0.00
4,600.0	14.95	323.59	4,495.0	59.98	670.1	-494.3	-613.3	0.00	0.00	0.00
4,700.0	14.95	323.59	4,591.6	-36.64	690.9	-509.7	-632.3	0.00	0.00	0.00
4,800.0	14.95	323.59	4,688.3	-133.25	711.7	-525.0	-651.3	0.00	0.00	0.00
4,900.0	14.95	323.59	4,784.9	-229.87	732.4	-540.3	-670.3	0.00	0.00	0.00
5,000.0	14.95	323.59	4,881.5	-326.48	753.2	-555.6	-689.3	0.00	0.00	0.00

Planning Report



Database:	EDM 5000.1 Single User Db	Local Co-ordinate Reference:	Well STATE SEVENTY HOLES F-J-6HNB
Company:	BONANZA CREEK ENERGY INC.	TVD Reference:	KB-EST @ 4555.0usft (Original Well Elev)
Project:	WELD COUNTY, COLORADO (NAD 83)	MD Reference:	KB-EST @ 4555.0usft (Original Well Elev)
Site:	NE NW SEC. 6 T4N R62W 6th P.M.	North Reference:	True
Well:	STATE SEVENTY HOLES F-J-6HNB	Survey Calculation Method:	Minimum Curvature
Wellbore:	ORIGINAL WELLBORE		
Design:	PROPOSAL #1		

Planned Survey

MD (usft)	Inc (°)	Azi (°)	TVD (usft)	SS (usft)	+N/-S (usft)	+E/-W (usft)	Vertical Section (usft)	Dogleg Rate (°/100usft)	Build Rate (°/100usft)	Turn Rate (°/100usft)
END OF TANGENT										
5,094.5	14.95	323.59	4,972.8	-417.75	772.8	-570.1	-707.2	0.00	0.00	0.00
5,100.0	14.84	323.59	4,978.1	-423.10	773.9	-570.9	-708.3	2.00	-2.00	0.00
5,200.0	12.84	323.59	5,075.2	-520.19	793.2	-585.1	-725.9	2.00	-2.00	0.00
5,300.0	10.84	323.59	5,173.1	-618.06	809.7	-597.3	-741.0	2.00	-2.00	0.00
5,400.0	8.84	323.59	5,271.6	-716.59	823.4	-607.4	-753.6	2.00	-2.00	0.00
5,500.0	6.84	323.59	5,370.6	-815.65	834.4	-615.5	-763.6	2.00	-2.00	0.00
5,600.0	4.84	323.59	5,470.1	-915.12	842.6	-621.5	-771.1	2.00	-2.00	0.00
5,700.0	2.84	323.59	5,569.9	-1,014.90	848.0	-625.5	-776.0	2.00	-2.00	0.00
5,800.0	0.84	323.59	5,669.8	-1,114.84	850.6	-627.4	-778.4	2.00	-2.00	0.00
EOD TO VERTICAL										
5,841.9	0.00	0.00	5,711.7	-1,156.70	850.8	-627.6	-778.6	2.00	-2.00	0.00
KOP (12°/100ft BUR)										
5,871.9	0.00	0.00	5,741.7	-1,186.70	850.8	-627.6	-778.6	0.00	0.00	0.00
5,900.0	3.38	177.78	5,769.8	-1,214.82	850.0	-627.6	-777.8	12.00	12.00	0.00
6,000.0	15.38	177.78	5,868.3	-1,313.31	833.7	-626.9	-761.7	12.00	12.00	0.00
6,100.0	27.38	177.78	5,961.3	-1,406.26	797.4	-625.5	-725.7	12.00	12.00	0.00
6,200.0	39.38	177.78	6,044.6	-1,489.61	742.5	-623.4	-671.4	12.00	12.00	0.00
6,300.0	51.38	177.78	6,114.7	-1,559.73	671.5	-620.6	-601.1	12.00	12.00	0.00
6,400.0	63.38	177.78	6,168.5	-1,613.54	587.5	-617.4	-517.9	12.00	12.00	0.00
START OF TANGENT										
6,496.9	75.00	177.78	6,202.9	-1,647.90	497.2	-613.9	-428.5	12.00	12.00	0.00
6,500.0	75.00	177.78	6,203.7	-1,648.71	494.1	-613.8	-425.5	0.00	0.00	0.00
END OF TANGENT										
6,596.9	75.00	177.78	6,228.8	-1,673.78	400.7	-610.1	-332.9	0.00	0.00	0.00
6,600.0	75.38	177.78	6,229.6	-1,674.58	397.6	-610.0	-329.9	12.00	12.00	0.00
6,700.0	87.38	177.78	6,244.5	-1,689.55	299.0	-606.2	-232.3	12.00	12.00	0.00
7" ICP - STATE SEVENTY HOLES F-J-6HNB *NEW*										
6,721.9	90.00	177.78	6,245.0	-1,690.05	277.2	-605.4	-210.7	12.00	12.00	0.00
6,800.0	90.00	177.78	6,245.0	-1,690.05	199.1	-602.3	-133.4	0.00	0.00	0.00
6,900.0	90.00	177.78	6,245.0	-1,690.05	99.2	-598.5	-34.4	0.00	0.00	0.00
7,000.0	90.00	177.78	6,245.0	-1,690.05	-0.8	-594.6	64.5	0.00	0.00	0.00
7,100.0	90.00	177.78	6,245.0	-1,690.05	-100.7	-590.7	163.4	0.00	0.00	0.00
7,200.0	90.00	177.78	6,245.0	-1,690.05	-200.6	-586.8	262.4	0.00	0.00	0.00
7,300.0	90.00	177.78	6,245.0	-1,690.05	-300.5	-583.0	361.3	0.00	0.00	0.00
7,400.0	90.00	177.78	6,245.0	-1,690.05	-400.5	-579.1	460.2	0.00	0.00	0.00
7,500.0	90.00	177.78	6,245.0	-1,690.05	-500.4	-575.2	559.2	0.00	0.00	0.00
7,600.0	90.00	177.78	6,245.0	-1,690.04	-600.3	-571.4	658.1	0.00	0.00	0.00
7,700.0	90.00	177.78	6,245.0	-1,690.04	-700.2	-567.5	757.0	0.00	0.00	0.00
7,800.0	90.00	177.78	6,245.0	-1,690.04	-800.2	-563.6	856.0	0.00	0.00	0.00
7,900.0	90.00	177.78	6,245.0	-1,690.04	-900.1	-559.8	954.9	0.00	0.00	0.00
8,000.0	90.00	177.78	6,245.0	-1,690.04	-1,000.0	-555.9	1,053.8	0.00	0.00	0.00
8,100.0	90.00	177.78	6,245.0	-1,690.04	-1,099.9	-552.0	1,152.8	0.00	0.00	0.00
8,200.0	90.00	177.78	6,245.0	-1,690.04	-1,199.9	-548.2	1,251.7	0.00	0.00	0.00
8,300.0	90.00	177.78	6,245.0	-1,690.04	-1,299.8	-544.3	1,350.7	0.00	0.00	0.00
8,400.0	90.00	177.78	6,245.0	-1,690.04	-1,399.7	-540.4	1,449.6	0.00	0.00	0.00
8,500.0	90.00	177.78	6,245.0	-1,690.04	-1,499.6	-536.6	1,548.5	0.00	0.00	0.00
8,600.0	90.00	177.78	6,245.0	-1,690.04	-1,599.6	-532.7	1,647.5	0.00	0.00	0.00
8,700.0	90.00	177.78	6,245.0	-1,690.04	-1,699.5	-528.8	1,746.4	0.00	0.00	0.00
8,800.0	90.00	177.79	6,245.0	-1,690.04	-1,799.4	-525.0	1,845.3	0.00	0.00	0.00
8,900.0	90.00	177.79	6,245.0	-1,690.03	-1,899.3	-521.1	1,944.3	0.00	0.00	0.00
9,000.0	90.00	177.79	6,245.0	-1,690.03	-1,999.3	-517.2	2,043.2	0.00	0.00	0.00
9,100.0	90.00	177.79	6,245.0	-1,690.03	-2,099.2	-513.4	2,142.1	0.00	0.00	0.00

Planning Report



Database:	EDM 5000.1 Single User Db	Local Co-ordinate Reference:	Well STATE SEVENTY HOLES F-J-6HNB
Company:	BONANZA CREEK ENERGY INC.	TVD Reference:	KB-EST @ 4555.0usft (Original Well Elev)
Project:	WELD COUNTY, COLORADO (NAD 83)	MD Reference:	KB-EST @ 4555.0usft (Original Well Elev)
Site:	NE NW SEC. 6 T4N R62W 6th P.M.	North Reference:	True
Well:	STATE SEVENTY HOLES F-J-6HNB	Survey Calculation Method:	Minimum Curvature
Wellbore:	ORIGINAL WELLBORE		
Design:	PROPOSAL #1		

Planned Survey										
MD (usft)	Inc (°)	Azi (°)	TVD (usft)	SS (usft)	+N/-S (usft)	+E/-W (usft)	Vertical Section (usft)	Dogleg Rate (°/100usft)	Build Rate (°/100usft)	Turn Rate (°/100usft)
9,200.0	90.00	177.79	6,245.0	-1,690.03	-2,199.1	-509.5	2,241.1	0.00	0.00	0.00
9,300.0	90.00	177.79	6,245.0	-1,690.03	-2,299.0	-505.6	2,340.0	0.00	0.00	0.00
9,400.0	90.00	177.79	6,245.0	-1,690.03	-2,399.0	-501.8	2,438.9	0.00	0.00	0.00
9,500.0	90.00	177.79	6,245.0	-1,690.03	-2,498.9	-497.9	2,537.9	0.00	0.00	0.00
9,600.0	90.00	177.79	6,245.0	-1,690.03	-2,598.8	-494.1	2,636.8	0.00	0.00	0.00
9,700.0	90.00	177.79	6,245.0	-1,690.02	-2,698.7	-490.2	2,735.7	0.00	0.00	0.00
9,800.0	90.00	177.79	6,245.0	-1,690.02	-2,798.7	-486.3	2,834.7	0.00	0.00	0.00
9,900.0	90.00	177.79	6,245.0	-1,690.02	-2,898.6	-482.5	2,933.6	0.00	0.00	0.00
10,000.0	90.00	177.79	6,245.0	-1,690.02	-2,998.5	-478.6	3,032.5	0.00	0.00	0.00
10,100.0	90.00	177.79	6,245.0	-1,690.02	-3,098.4	-474.7	3,131.5	0.00	0.00	0.00
10,200.0	90.00	177.79	6,245.0	-1,690.02	-3,198.4	-470.9	3,230.4	0.00	0.00	0.00
10,300.0	90.00	177.79	6,245.0	-1,690.01	-3,298.3	-467.0	3,329.4	0.00	0.00	0.00
10,400.0	90.00	177.79	6,245.0	-1,690.01	-3,398.2	-463.2	3,428.3	0.00	0.00	0.00
10,500.0	90.00	177.79	6,245.0	-1,690.01	-3,498.1	-459.3	3,527.2	0.00	0.00	0.00
10,600.0	90.00	177.79	6,245.0	-1,690.01	-3,598.1	-455.5	3,626.2	0.00	0.00	0.00
10,700.0	90.00	177.79	6,245.0	-1,690.01	-3,698.0	-451.6	3,725.1	0.00	0.00	0.00
10,800.0	90.00	177.79	6,245.0	-1,690.01	-3,797.9	-447.7	3,824.0	0.00	0.00	0.00
10,900.0	90.00	177.79	6,245.0	-1,690.00	-3,897.8	-443.9	3,923.0	0.00	0.00	0.00
11,000.0	90.00	177.79	6,245.0	-1,690.00	-3,997.8	-440.0	4,021.9	0.00	0.00	0.00
BHL - STATE SEVENTY HOLES F-J-6HNB										
11,060.7	90.00	177.79	6,245.0	-1,690.00	-4,058.4	-437.7	4,081.9	0.00	0.00	0.00

Plan Annotations					
MD (usft)	TVD (usft)	Local Coordinates		Comment	
		+N/-S (usft)	+E/-W (usft)		
1,000.0	1,000.0	0.0	0.0	START NUDGE (2°/100ft BUR)	
1,747.4	1,738.9	78.0	-57.5	EOB TO 14.95° INC	
5,094.5	4,972.8	772.8	-570.1	END OF TANGENT	
5,841.9	5,711.7	850.8	-627.6	EOD TO VERTICAL	
5,871.9	5,741.7	850.8	-627.6	KOP (12°/100ft BUR)	
6,496.9	6,202.9	497.2	-613.9	START OF TANGENT	
6,596.9	6,228.8	400.7	-610.1	END OF TANGENT	
6,721.9	6,245.0	277.2	-605.4	7" ICP - STATE SEVENTY HOLES F-J-6HNB *NEW*	
11,060.7	6,245.0	-4,058.4	-437.7	BHL - STATE SEVENTY HOLES F-J-6HNB	