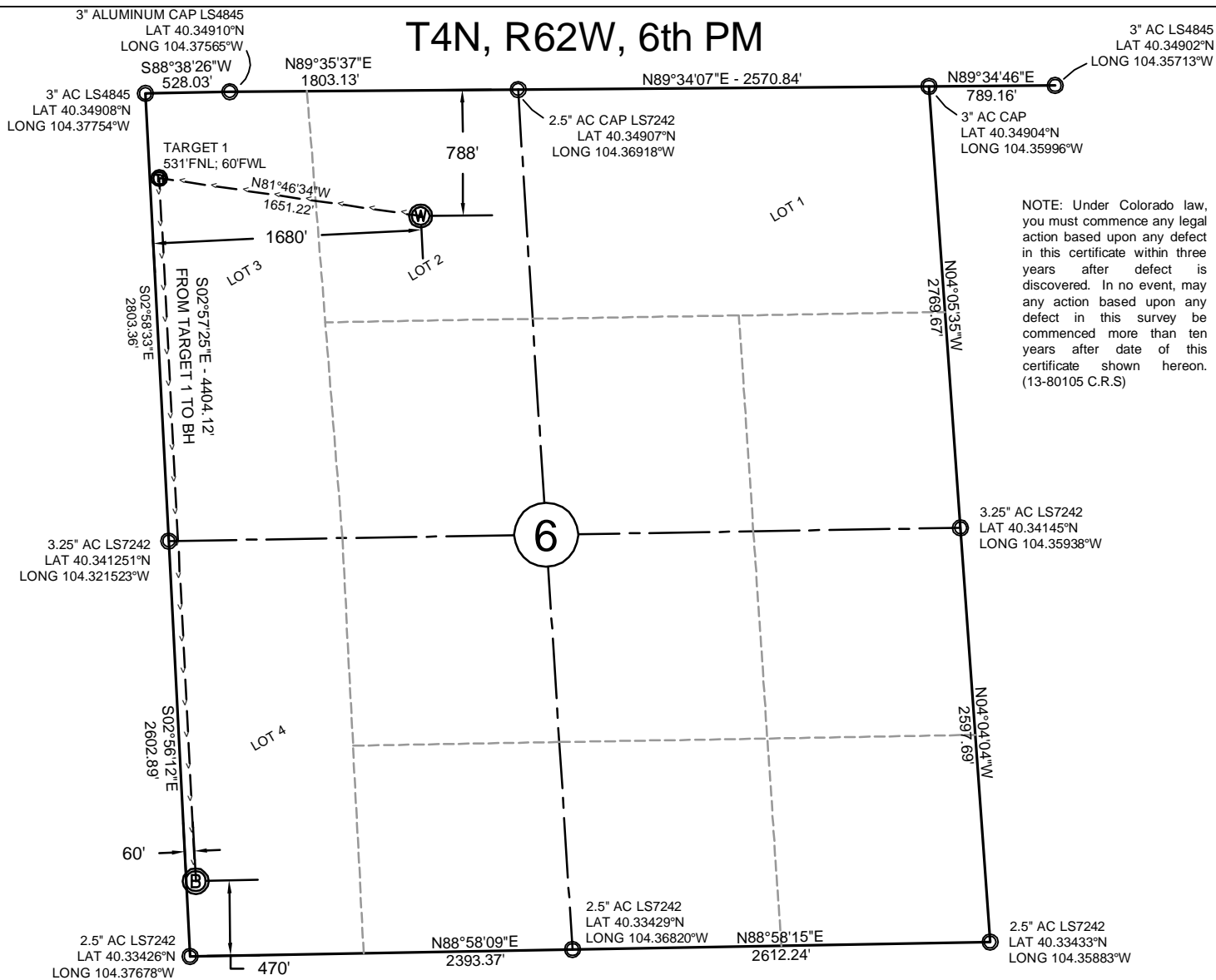


C:\FES PROJECTS\1319-01_BONANZA\4N-62W.dwg\CERT.dwg SAVED DATE 2014-08-13 15:16

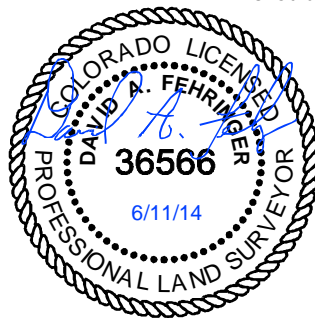


NOTES:

- All bearings are GRID based upon the Colorado State Plane Coordinate System, North Zone, NAD83(2011) derived from post-processed static GPS observations.
- Distances are at GROUND
- Vertical Datum is NAVD88 based upon GPS observations
- PDOP value equals 1.5.
- GPS operator: Dave Fehringer.
- Undisturbed ground elevation at wellhead = 4538'
- All section lengths are measured distances
- Nearest Cultural Distances
 - Buildings: 5280'+/-
 - Building Unit: 5280'+/-
 - High Occupancy Building Unit: 5280'+
 - Designated Outside Activity Area: 5280'+
 - Public Road: 5280'+/-
 - Above Ground Utility: 1972'+/- (Overhead power)
 - Railroad: 5280'+
 - Property Line: 788' (North Line Section 6)

CERTIFICATE OF SURVEYOR

I, David A. Fehringer of Lander, Wyoming hereby certify that this well location certificate was prepared from notes taken during an actual survey on JUNE 9, 2014 and that it correctly shows the drilling location of BONANZA CREEK ENERGY, INC., STATE SEVENTY HOLES A-E-6HNB as staked during said survey. This map does not represent a boundary survey or an improvement location plat and should not be used for the establishment of boundary lines.



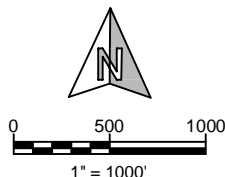
NAD 83 (CO-N 83)
SURFACE LOCATION:
LAT 40.34692° (1371226N)
LONG 104.37140° (3314565E)
TARGET 1:
LAT 40.34763° (1371462N)
LONG 104.37725° (3312931E)
BOTTOM HOLE:
LAT 40.33555° (1367065N)
LONG 104.37664° (3313158E)

SHEET NO:

1 of 1



Drawn By: DAF
Checked By: DDF
Date: 6/10/14
Revision: 1
Date: 6/13/14
Explanation: swap well lines



WELL LOCATION CERTIFICATE
STATE SEVENTY HOLES
A-E-6HNB
788'FNL, 1680'FWL
NE $\frac{1}{4}$ NW $\frac{1}{4}$, SECTION 6,
T.4N., R.62W., 6th PM
WELD COUNTY, COLORADO

