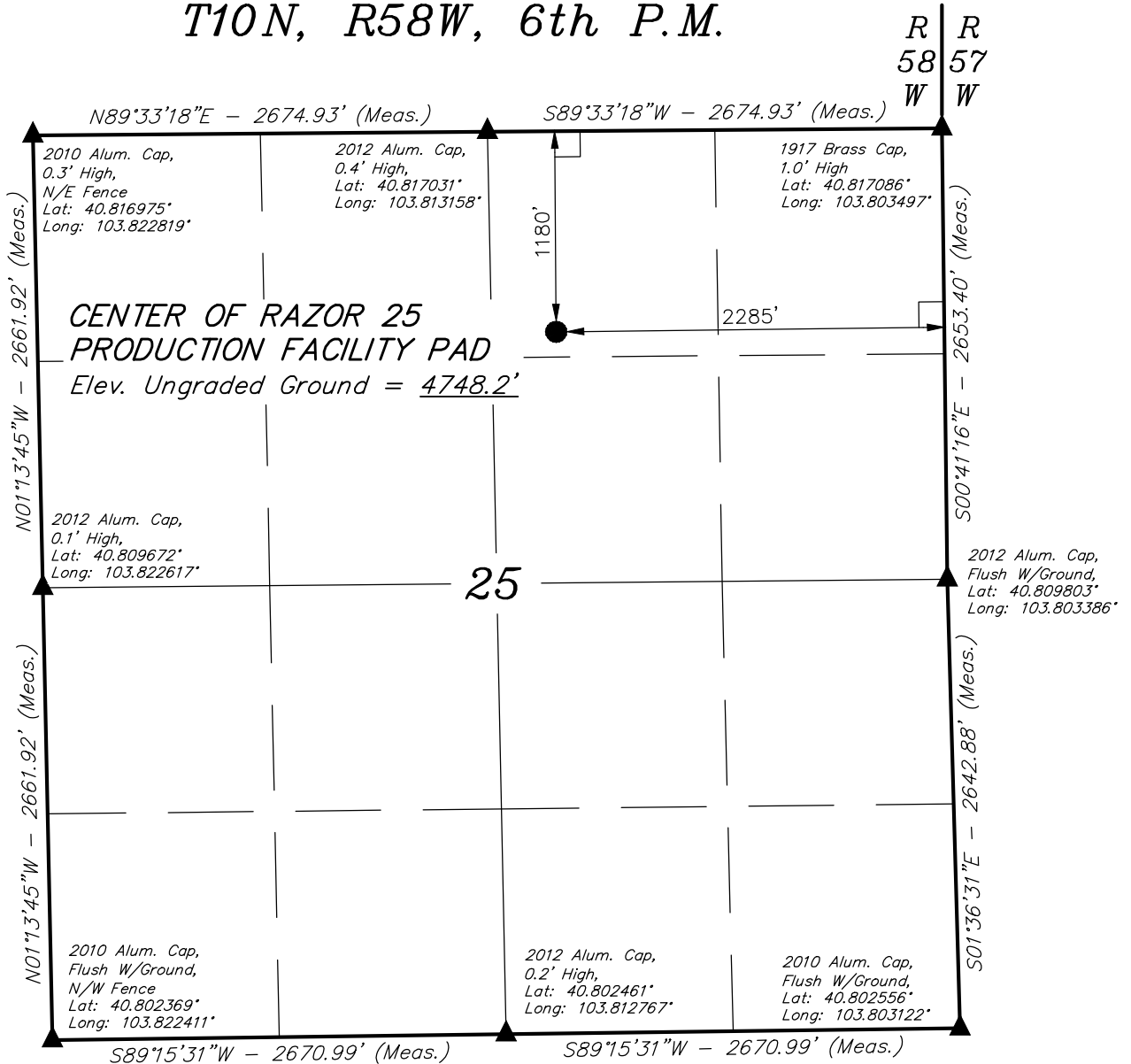


T10N, R58W, 6th P.M.



LEGEND:

└─┘ = 90° SYMBOL

● = CENTER OF PRODUCTION FACILITY PAD.

▲ = SECTION CORNERS LOCATED.



NAD 83 (CENTER OF RAZOR 25 PRODUCTION FACILITY PAD)	
LATITUDE = 40°48'49.68" (40.813800)	
LONGITUDE = 103°48'42.12" (103.811700)	
NAD 27 (CENTER OF RAZOR 25 PRODUCTION FACILITY PAD)	
LATITUDE = 40°48'49.73" (40.813814)	
LONGITUDE = 103°48'40.31" (103.811197)	

BASIS OF BEARINGS
BASIS OF BEARINGS IS A G.P.S. OBSERVATION
BASIS OF ELEVATION

SPOT ELEVATION LOCATED AT THE NORTHEAST CORNER OF SECTION 15, T9N, R58W, 6th P.M. TAKEN FROM THE GATEHOOK SPRING, QUADRANGLE, COLORADO, WELD COUNTY, 7.5 MINUTE QUAD (TOPOGRAPHIC MAP) PUBLISHED BY THE UNITED STATES DEPARTMENT OF THE INTERIOR, GEOLOGICAL SURVEY. SAID ELEVATION IS MARKED AS BEING 4679 FEET.



UELS, LLC
Corporate Office * 85 South 200 East
Vernal, UT 84078 * (435) 789-1017

CERTIFICATE

THIS IS TO CERTIFY THAT THE ABOVE PLAT WAS PREPARED FROM FIELD NOTES OF ACTUAL SURVEYS MADE BY ME OR UNDER MY SUPERVISION AND THAT THE SAME ARE TRUE AND CORRECT TO THE BEST OF MY KNOWLEDGE AND BELIEF.

REGISTERED LAND SURVEYOR
REGISTRATION NO. 28285
STATE OF COLORADO

WHITING OIL & GAS CORP.

Production Facility Location, CENTER OF RAZOR 25 PRODUCTION FACILITY PAD, located as shown in the NW 1/4 NE 1/4, OF SECTION 25, T10N, R58W, 6th P.M. WELD COUNTY, COLORADO

SURVEYED BY: DARREN SHANKS, D.S.	DATE: 06-02-14
DRAWN BY: K.B.	DATE DRAWN: 06-03-14
SCALE: 1" = 1000'	REVISED: 00-00-00

LOCATION PLAT