

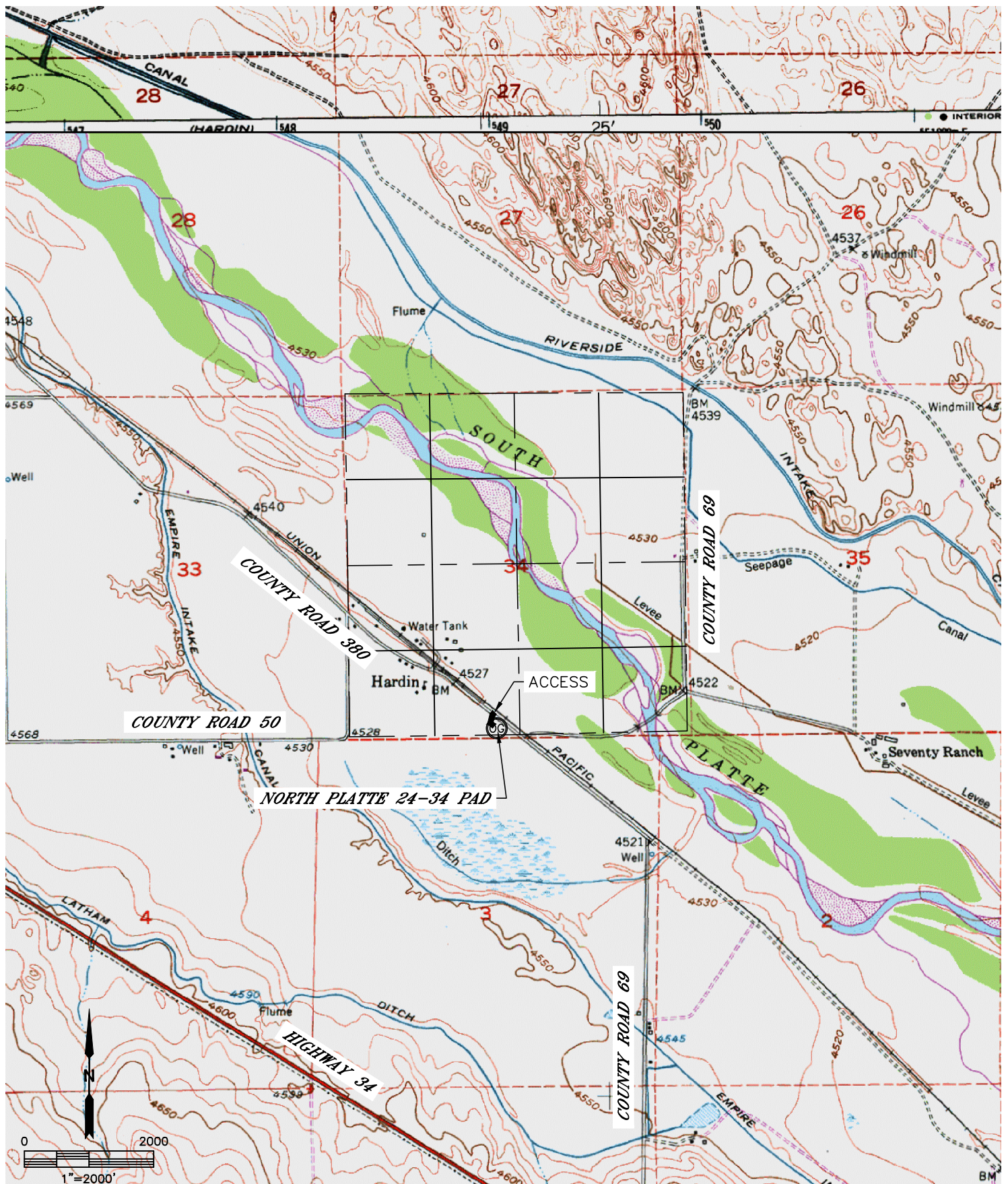


Lat40°, Inc. 1635 Foxtrail Drive, Suite 325 Loveland, CO 970-776-3321

ACCESS ROAD MAP

NORTH PLATTE 24-34 PAD

SECTION: 34
TOWNSHIP: 5N
RANGE: 63W

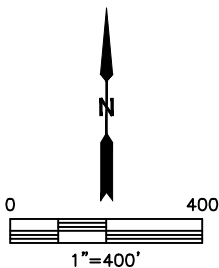
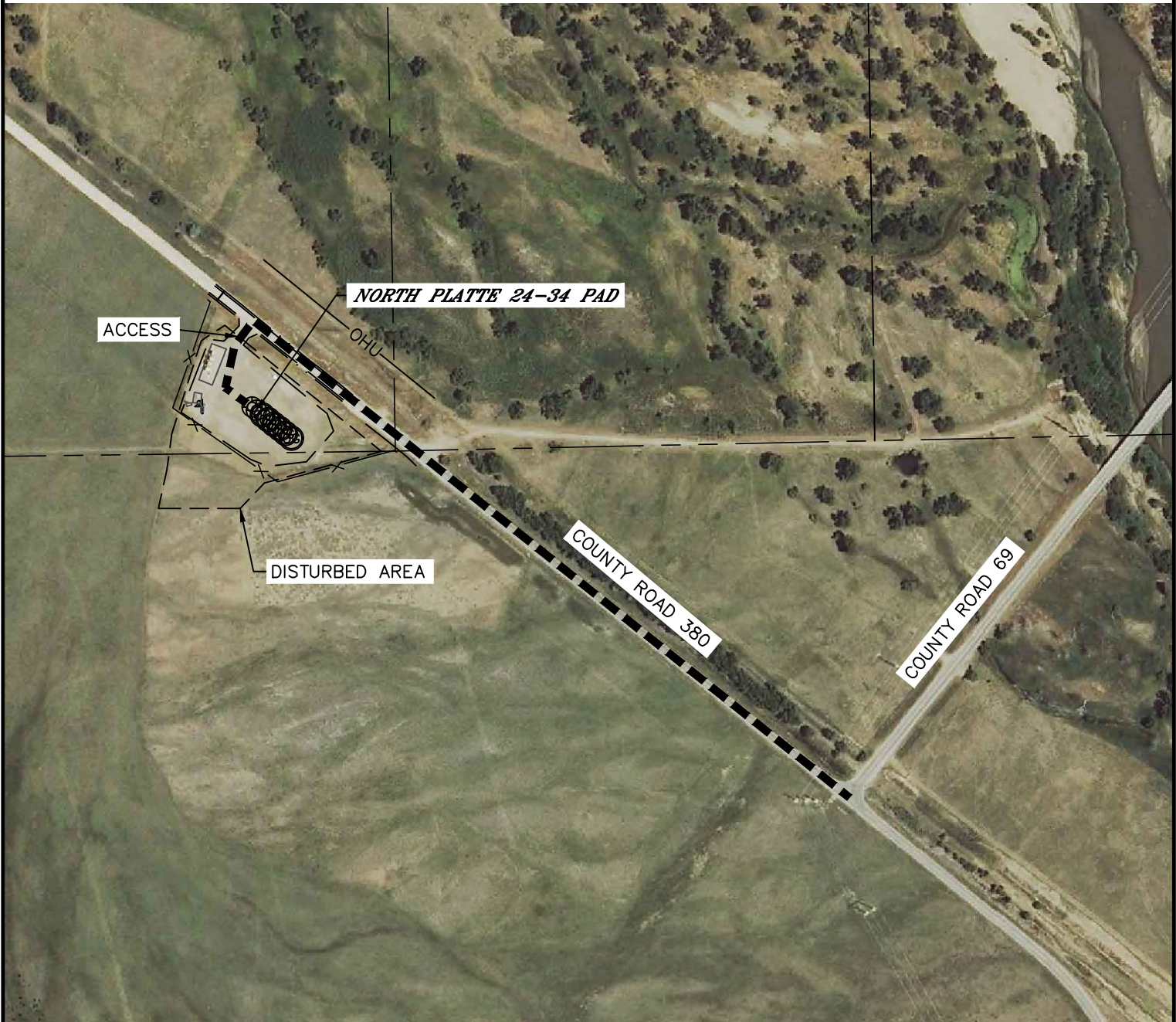




Lat40°, Inc. 1635 Foxtrail Drive, Suite 325 Loveland, CO 970-776-3321

ACCESS ROAD MAP
NORTH PLATTE 24-34 PAD

SECTION: 34
TOWNSHIP: 5N
RANGE: 63W





Lat40°, Inc. 1635 Foxtrail Drive, Suite 325 Loveland, CO 970-776-3321

ACCESS ROAD MAP

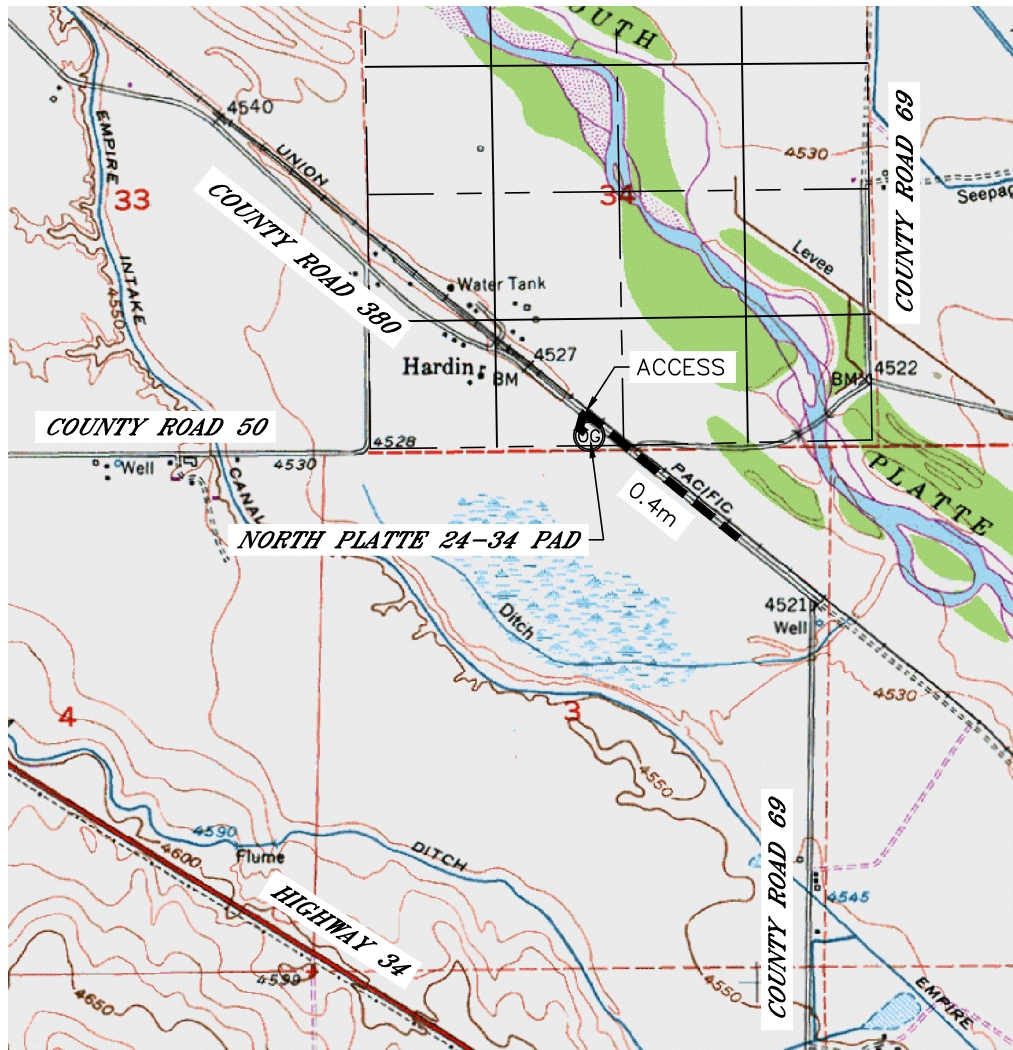
NORTH PLATTE 24-34 PAD

SECTION: 34
TOWNSHIP: 5N
RANGE: 63W

EXISTING WELLS:
NORTH PLATTE 33-34
NORTH PLATTE 34-34

PROPOSED WELLS:
NORTH PLATTE J24-F21-34HNC
NORTH PLATTE 24-21-34HC
NORTH PLATTE 24-21-34HNB
NORTH PLATTE O24-K21-34HNC
NORTH PLATTE O-K-34HC
NORTH PLATTE O-K-34HNB

DRIVING DIRECTIONS TO NORTH PLATTE 24-34 PAD:
FROM THE INTERSECTION OF WELD COUNTY ROAD 380 AND WELD COUNTY ROAD 69 DRIVE NORTHWESTERLY
ON COUNTY ROAD 380 FOR 0.4 MILES TO THE PAD ENTRANCE ON THE SOUTHERLY SIDE OF THE COUNTY
ROAD, FOLLOW ACCESS ROAD IN A SOUTHERLY DIRECTION TO THE NORTH PLATTE 24-34 PAD.



NOT TO SCALE