

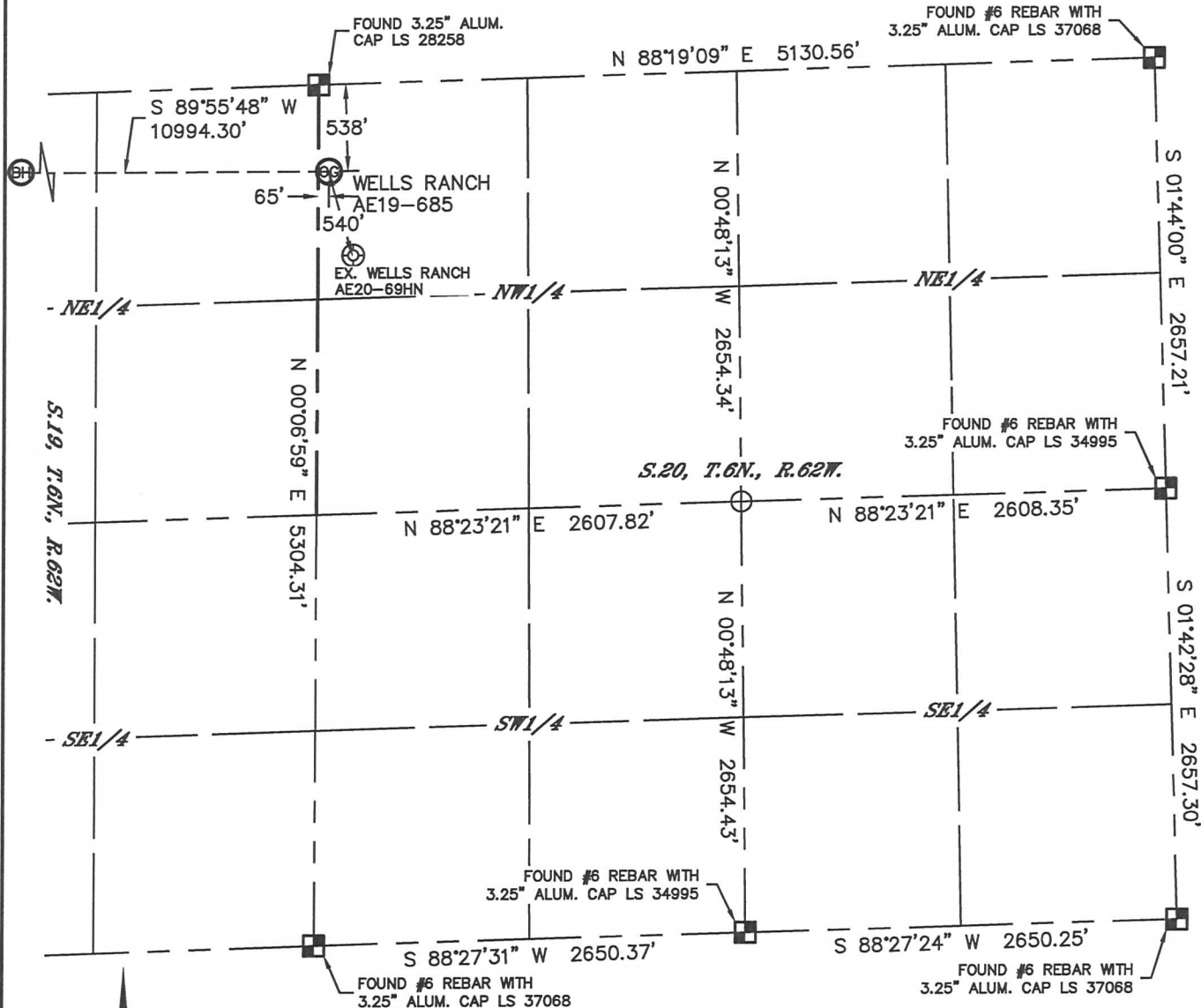


Lat40°, Inc. 1635 Foxtrail Drive, Suite 325 Loveland, CO 970-776-3321

# WELL LOCATION CERTIFICATE

THIS MAP DOES NOT REPRESENT A BOUNDARY SURVEY

SECTION: 20  
TOWNSHIP: 6N  
RANGE: 62W



In accordance with a request from Jacob Rice with Noble Energy Inc., Lat40°, Inc. has determined the surface location of the WELLS RANCH AE19-685 to be 538' from the NORTH line and 65' from the WEST line as measured at right angles from the section lines of Section 20, Township 6 North, Range 62 West, and the bottom hole to be 330' from the NORTH line and 235' from the EAST line as measured at right angles from the section lines of Section 23, Township 6 North, Range 63 West of the Sixth Principal Meridian, County of Weld, State of Colorado.

I hereby state that this Well Location Certificate was prepared by me, or under my direct supervision, that the fieldwork was completed on 2/14/2014, for and on behalf of Noble Energy Inc.. That this is not a Land Survey Plat or an Improvement Survey Plat, and that it is not to be relied upon for establishment of fence, building, or other future improvement lines.

## NOTE:

- 1) Bearings shown are Grid Bearings of the Colorado State Plane Coordinate System, North Zone, North American Datum 1983/2007. The lineal dimensions as contained herein are based upon the "U.S. Survey Foot."
  - 2) Ground elevations are based on an observed GPS elevation (NAVD 1988 DATUM).
  - 3) IMPROVEMENTS: See LOCATION DRAWING for all visible improvements within 500' of disturbed area.
  - 4) SURFACE USE: RANGELAND
  - 5) INSTRUMENT OPERATOR: MARK ANGELL
  - 6) NEAREST EXISTING WELL: EX. WELLS RANCH AE20-69HN 540' SE
- NEAREST CULTURAL ITEMS:  
BUILDING: 3303' NE  
BUILDING UNIT: 5280'+  
HIGH OCCUPANCY BUILDING UNIT: 5280'+  
DESIGNATED OUTSIDE ACTIVITY AREA: 5280'+  
PUBLIC ROAD: 526' N (CR 68)  
ABOVEGROUND UTILITY: 1875' NE  
RAILROAD: 5280'+  
PROPERTY LINE: 65' W

## SURFACE LOCATION

LAT: 40.47804°N  
LONG: 104.35570°W  
PDOP: 1.6  
ELEV: 4841'  
1/4, 1/4: NW1/4NW1/4

## BOTTOM HOLE

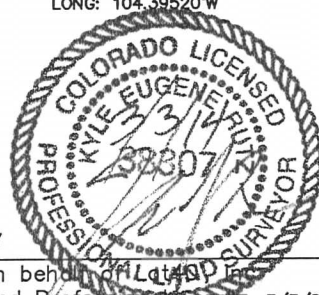
LAT: 40.47838°N  
LONG: 104.39520°W

## LEGEND

- = ALIQUOT MONUMENT AS DESCRIBED
- = CALCULATED POSITION

## SHEET 1 OF 4

Kyle E. Rutz—On behalf of Lat40°, Inc.  
Colorado Licensed Professional Surveyor No. 38307  
DATE: 3/3/2014  
PROJECT#: 2014014



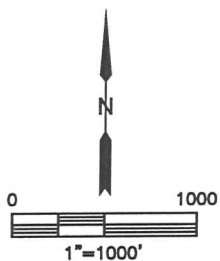
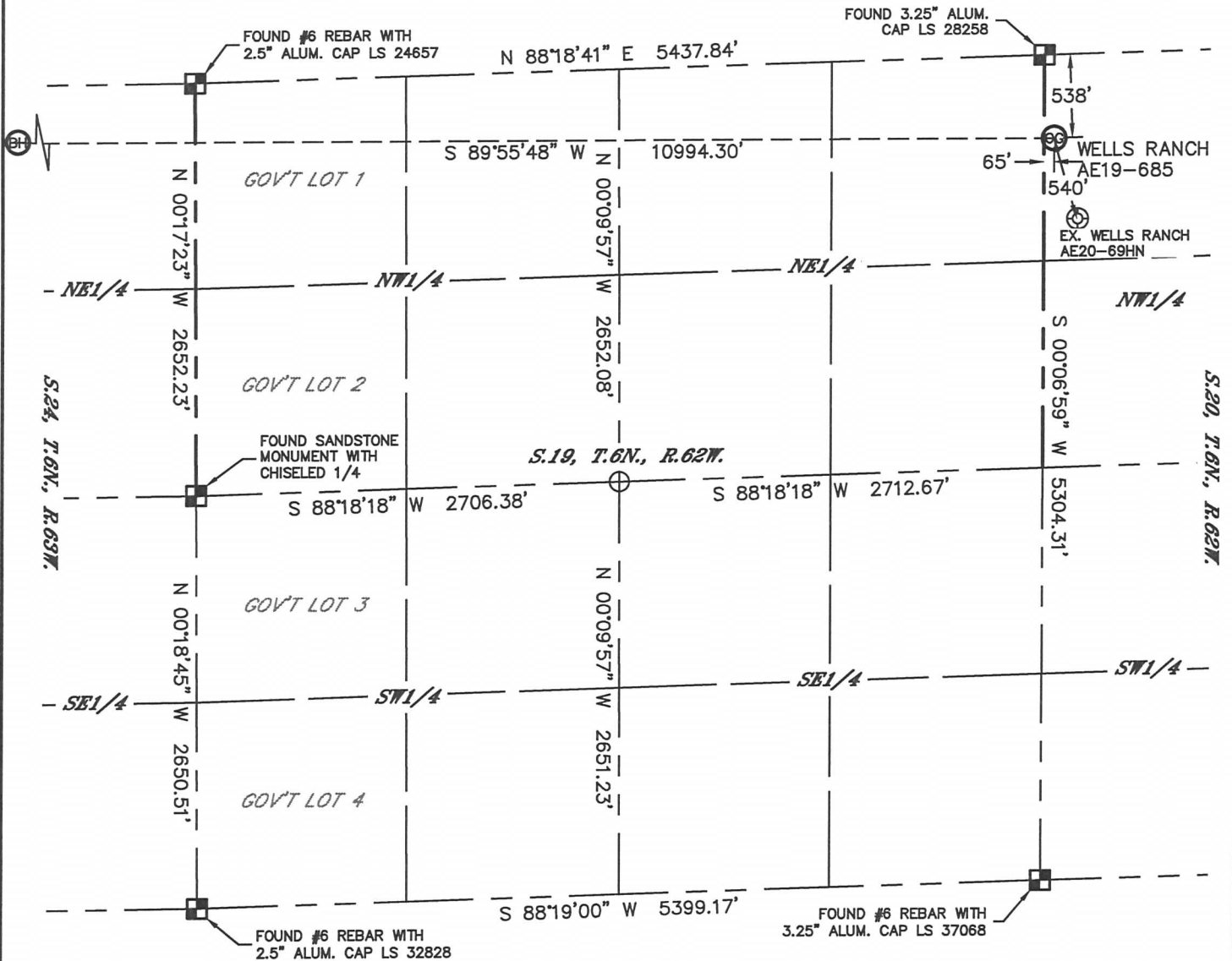


Lat40°, Inc. 1635 Foxtrail Drive, Suite 325 Loveland, CO 970-776-3321

# WELL LOCATION CERTIFICATE

THIS MAP DOES NOT REPRESENT A BOUNDARY SURVEY

SECTION: 20  
TOWNSHIP: 6N  
RANGE: 62W

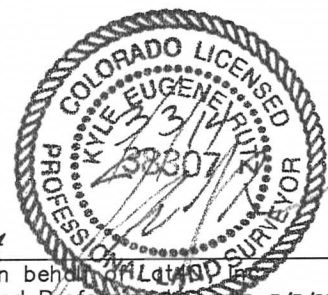


## LEGEND

- = ALIQUOT MONUMENT AS DESCRIBED
- = CALCULATED POSITION

## SHEET 2 OF 4

Kyle E. Rutz—On behalf of Lat40°, Inc.  
Colorado Licensed Professional Land Surveyor No. 38307  
DATE: 3/3/2014  
PROJECT#: 2014014



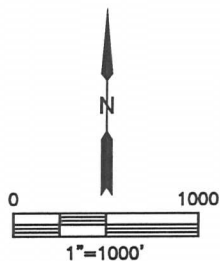
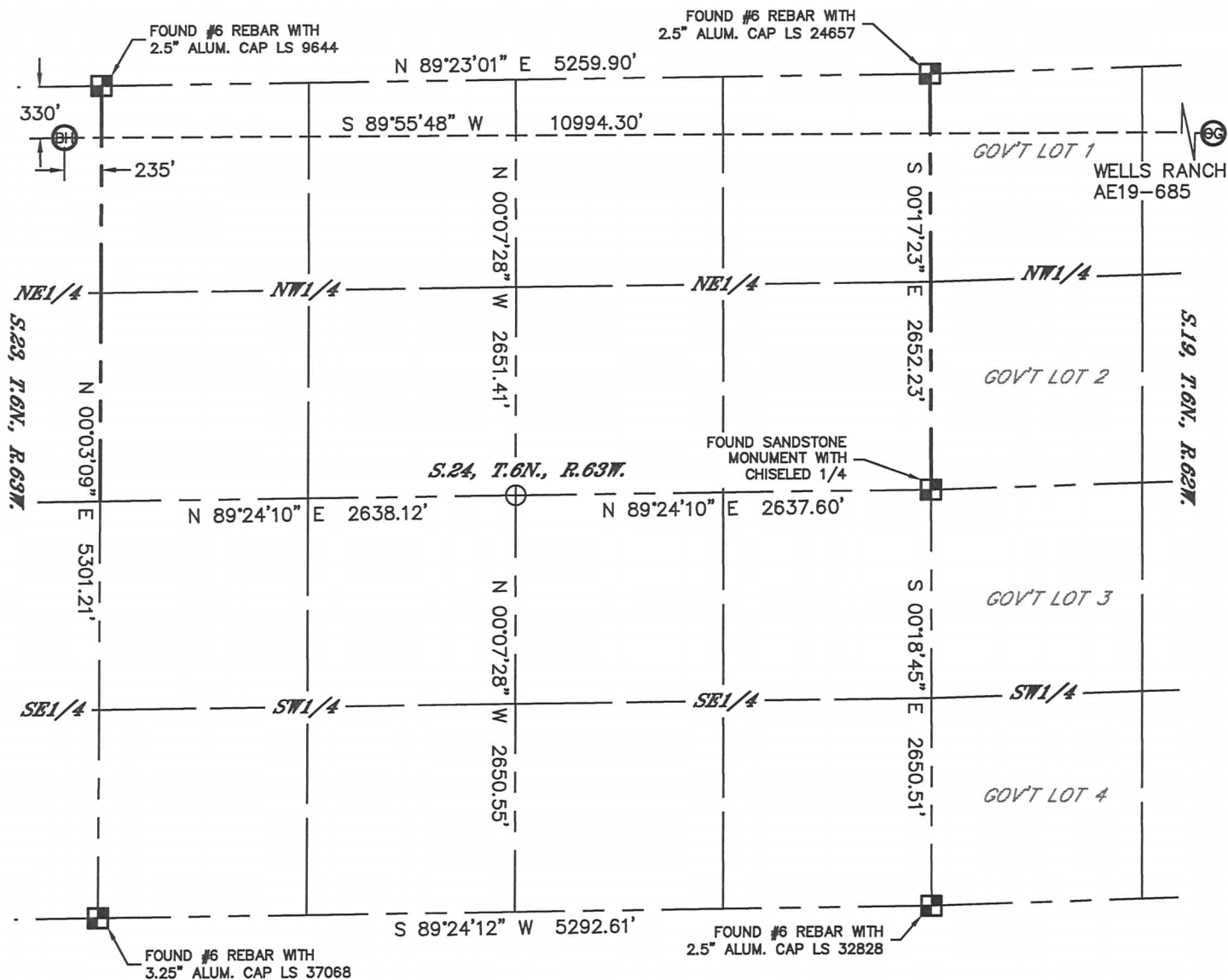


Lat40°, Inc. 1635 Foxtrail Drive, Suite 325 Loveland, CO 970-776-3321

## WELL LOCATION CERTIFICATE

THIS MAP DOES NOT REPRESENT A BOUNDARY SURVEY

SECTION: 20  
TOWNSHIP: 6N  
RANGE: 62W

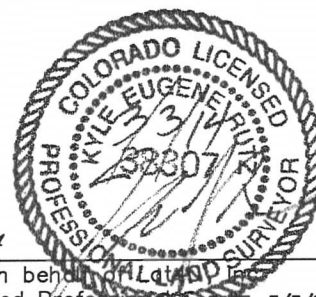


### LEGEND

- = ALIQUOT MONUMENT AS DESCRIBED
- = CALCULATED POSITION

### SHEET 3 OF 4

Kyle E. Rutz-On behalf of Lat40° Inc.  
Colorado Licensed Professional Land Surveyor No. 38307  
DATE: 3/3/2014  
PROJECT#: 2014014



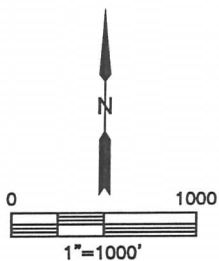
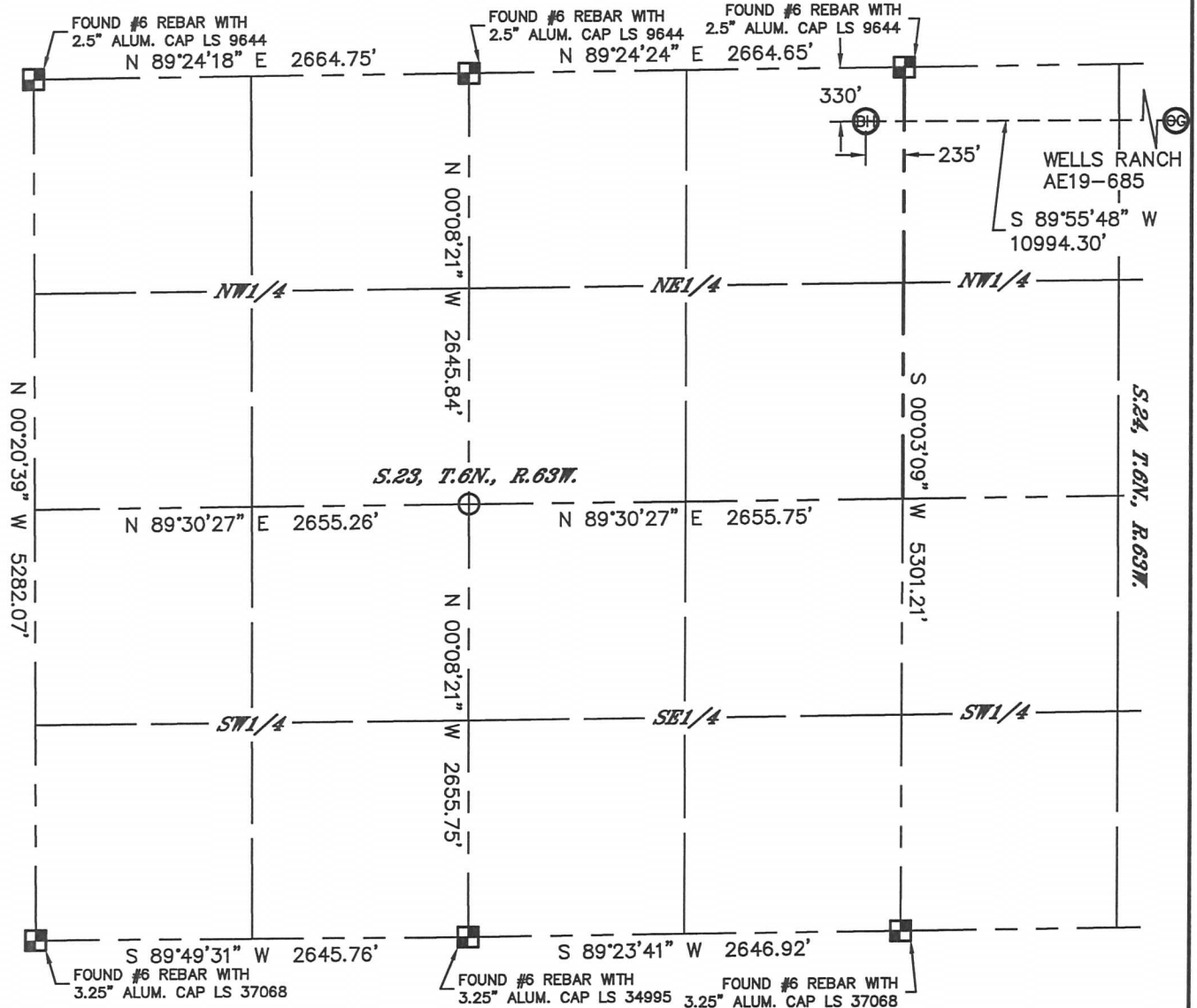


Lat40°, Inc. 1635 Foxtrail Drive, Suite 325 Loveland, CO 970-776-3321

## WELL LOCATION CERTIFICATE

THIS MAP DOES NOT REPRESENT A BOUNDARY SURVEY

SECTION: 20  
TOWNSHIP: 6N  
RANGE: 62W



### LEGEND

- = ALIQUOT MONUMENT AS DESCRIBED
- = CALCULATED POSITION

### SHEET 4 OF 4

Kyle E. Rutz—On behalf of Lat40° Inc.  
Colorado Licensed Professional Land Surveyor No. 38307  
DATE: 3/3/2014  
PROJECT#: 2014014



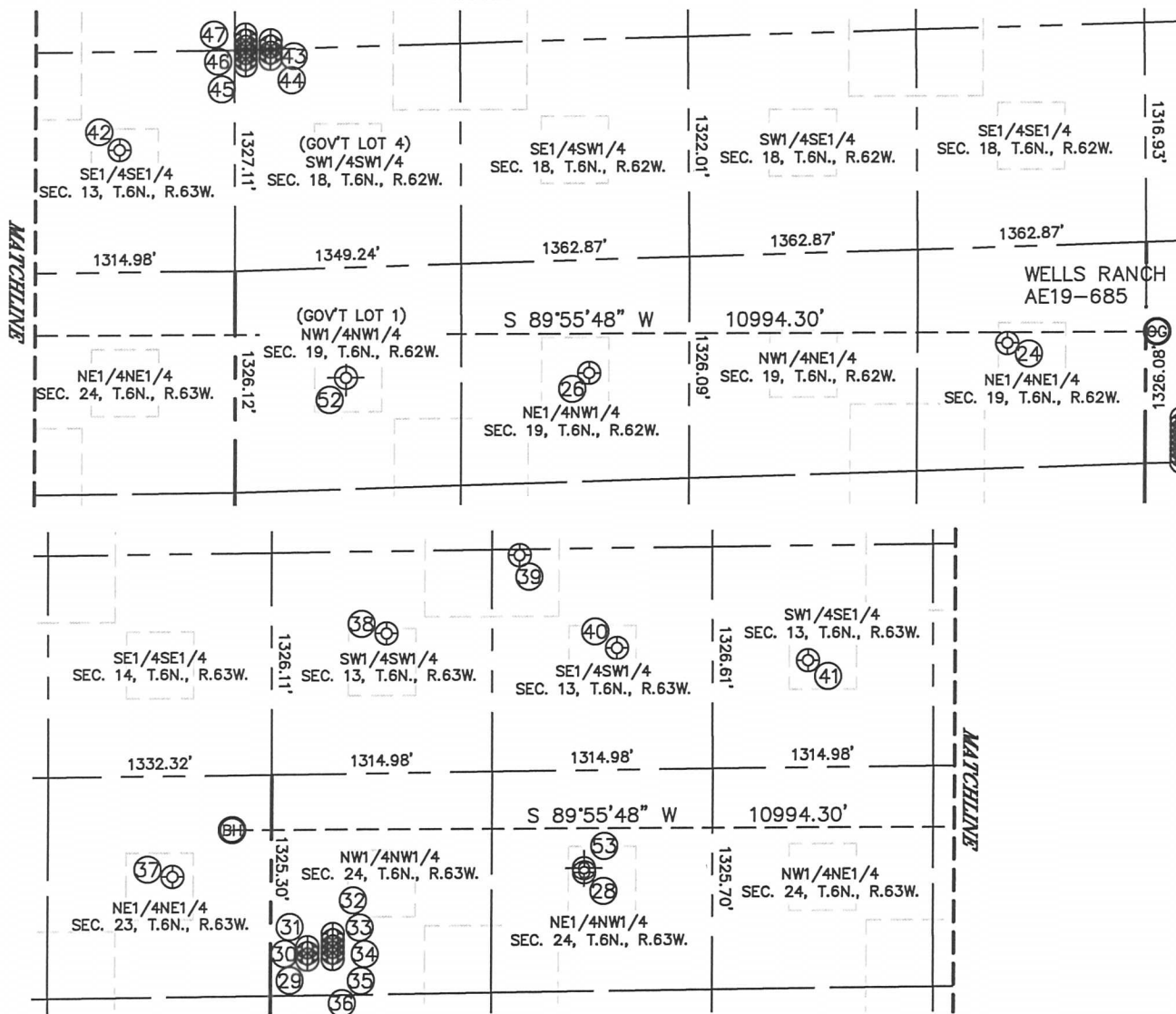


Lat40°, Inc. 1635 Foxtrail Drive, Suite 325 Loveland, CO 970-776-3321

## SITE SKETCH

WELLS RANCH AE19-685

SECTION: 20  
TOWNSHIP: 6N  
RANGE: 62W



SHEET 1 OF 2

DATE: 3/3/2014  
PROJECT#: 2014014





Lat40°, Inc. 1635 Foxtrail Drive, Suite 325 Loveland, CO 970-776-3321

# SITE SKETCH

WELLS RANCH AE19-685

SECTION: 20  
TOWNSHIP: 6N  
RANGE: 62W

WELL NO.	WELL NAME	SHL FOOTAGE				SHL LAT°	SHL LONG°	PDOP	ELEV (FT.)	1/4/1/4
24	WELLS RANCH USX AE 19-01P	577	FNL	827	FEL	40.47789	-104.35890	1.7	4836	NENE
26	WELLS RANCH USX AE 19-03P	678	FNL	2112	FWL	40.47750	-104.36787	2.3	4824	NENW
28	WELLS RANCH AA 24-03X	615	FNL	1869	FWL	40.47759	-104.38766	2.4	4804	NENW
29	WELLS RANCH AA 23-67HN	1111	FNL	220	FWL	40.47624	-104.39360	2.9	4795	NWNW
30	WELLS RANCH AA 23-68-1HN	1073	FNL	220	FWL	40.47634	-104.39360	2.9	4795	NWNW
31	WELLS RANCH AA 23-69-1HN	1036	FNL	220	FWL	40.47644	-104.39360	2.9	4795	NWNW
32	BOB AA 24-68-1HC	961	FNL	369	FWL	40.47665	-104.39306	3.2	4795	NWNW
33	WELLS RANCH AA 24-68-1HN	997	FNL	370	FWL	40.47655	-104.39306	2.2	4795	NWNW
34	WELLS RANCH AA 24-67HN	1036	FNL	369	FWL	40.47644	-104.39306	2.2	4795	NWNW
35	WELLS RANCH AA 24-67-1HN	1073	FNL	369	FWL	40.47634	-104.39307	3.3	4795	NWNW
36	BOB AA 24-67-1HC	1111	FNL	369	FWL	40.47624	-104.39307	3.1	4795	NWNW
37	WELLS RANCH USX AA 23-01	605	FNL	589	FEL	40.47763	-104.39649	2.3	4776	NENE
38	WELLS RANCH USX AA 13-13	835	FSL	684	FWL	40.48158	-104.39186	2.3	4785	SWSW
39	WELLS RANCH USX AA 13-25	1291	FSL	1479	FWL	40.48282	-104.38899	2.4	4777	SESW
40	WELLS RANCH USX AA 13-14	728	FSL	2060	FWL	40.48128	-104.38692	2.5	4791	SESW
41	WELLS RANCH USX AA 13-15	640	FSL	2061	FEL	40.48103	-104.38283	2.7	4803	SWSE
42	WELLS RANCH USX AA 13-16	736	FSL	688	FEL	40.48129	-104.37789	2.7	4833	SESE
43	WELLS RANCH AE 18-63-1HN	1305	FSL	215	FWL	40.48285	-104.37464	2.7	4832	SWSW
44	WELLS RANCH AE 18-62-1HN	1267	FSL	215	FWL	40.48275	-104.37464	3.6	4832	SWSW
45	WELLS RANCH USX AA 13-62-1HN	1233	FSL	65	FWL	40.48265	-104.37518	3.2	4832	SWSW
46	WELLS RANCH USX AA 13-63-1HN	1271	FSL	65	FWL	40.48275	-104.37517	2.6	4832	SWSW
47	WELLS RANCH USX AA 13-63HN	1308	FSL	65	FWL	40.48286	-104.37517	2.7	4832	SWSW
52	CHAMPLIN AMOCO A 1 310 (P&A)	660	FNL	660	FWL	40.47747	-104.37306	NA	4823	NWNW
53	WELLS RANCH AA 24-03 (D&A)	590	FNL	1867	FWL	40.47766	-104.38766	NA	4804	NENW

SHEET 2 OF 2

NOTE: THE ABANDONED WELL DATA SHOWN IN RED ABOVE WAS OBTAINED FROM COGCC SCOUT CARDS.

DATE: 3/3/2014  
PROJECT#: 2014014