

WPX ENERGY ROCKY MOUNTAIN LLC-EBUS

PA 432-21

Nabors 573

Post Job Summary

Cement Surface Casing

Date Prepared: 03/30/2014

Submitted by: Grand Junction Cement Engineering

The Road to Excellence Starts with Safety

Sold To #: 300721	Ship To #: 3123605	Quote #:	Sales Order #: 0901174978
Customer: WPX ENERGY ROCKY MOUNTAIN LLC-EBUS	Customer Rep: Beaude Oaks		
Well Name: FEDERAL	Well #: PA 432-21	API/UWI #: 05-045-22040-00	
Field: PARACHUTE	City (SAP): PAR	County/Parish: GARFIELD	State: COLORADO
Legal Description: SE NW-21-6S-95W-2610FNL-1411FWL			
Contractor: NABORS DRLG	Rig/Platform Name/Num: NABORS 573		
Job BOM: 7521			
Well Type: DIRECTIONAL GAS			
Sales Person: HALAMERICA\HB50180	Srvc Supervisor: Carlton Kukus		

Job

Formation Name	
Formation Depth (MD)	Top
Form Type	BHST
Job depth MD	1554ft
Water Depth	Wk Ht Above Floor 5ft
Perforation Depth (MD)	From To

Well Data

Description	New / Used	Size in	ID in	Weight lbm/ft	Thread	Grade	Top MD ft	Bottom MD ft	Top TVD ft	Bottom TVD ft
Casing	0	9.625	9.001	32.3	8 RD	H-40	0	1544	0	1544
Open Hole Section			13.5				0	1554	0	1554

Tools and Accessories

Type	Size in	Qty	Make	Depth ft	Type	Size in	Qty	Make
Guide Shoe	9.625	1		1544	Top Plug	9.625	1	HES
Float Shoe	9.625	1			Bottom Plug	9.625	1	HES
Float Collar	9.625	1			SSR plug set	9.625	1	HES
Insert Float	9.625	1			Plug Container	9.625	1	HES
Stage Tool	9.625	1			Centralizers	9.625	1	HES

Miscellaneous Materials

Gelling Agt	Conc	Surfactant	Conc	Acid Type	Qty	Conc
Treatment Fld	Conc	Inhibitor	Conc	Sand Type	Size	Qty

Fluid Data

Stage/Plug #: 1										
Fluid #	Stage Type	Fluid Name	Qty	Qty UoM	Mixing Density lbm/gal	Yield ft3/sack	Mix Fluid Gal	Rate bbl/min	Total Mix Fluid Gal	
1	Fresh Water	Fresh Water	20	bbl	8.34			4		
Fluid #	Stage Type	Fluid Name	Qty	Qty UoM	Mixing Density lbm/gal	Yield ft3/sack	Mix Fluid Gal	Rate bbl/min	Total Mix Fluid Gal	
2	Lead Cement	VARICEM (TM) CEMENT	205	Sack/Ton	12.3	2.38	13.77	8	13.77	

13.70 Gal		FRESH WATER							
Fluid #	Stage Type	Fluid Name	Qty	Qty UoM	Mixing Density lbm/gal	Yield ft3/sack	Mix Fluid Gal	Rate bbl/min	Total Mix Fluid Gal
3	Tail Cement	VARICEM (TM) CEMENT	175	Sack/Ton	12.8	2.11	11.77	8	11.77
11.71 Gal		FRESH WATER							
Fluid #	Stage Type	Fluid Name	Qty	Qty UoM	Mixing Density lbm/gal	Yield ft3/sack	Mix Fluid Gal	Rate bbl/min	Total Mix Fluid Gal
4	Displacement	Displacement	117.8	bbl	8.34			10	
Cement Left In Pipe		Amount	46 ft		Reason		Shoe Joint		
Comment 4 bbls of cement to surface									

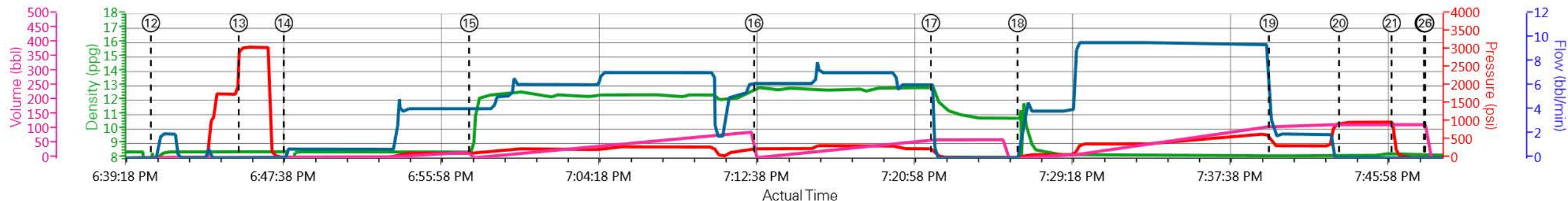
1.0 Real-Time Job Summary

1.1 Job Event Log

Type	Seq. No.	Graph Label/Activity	Date	Time	Source	DH Density (ppg)	PS Pump Press (psi)	Pump Stg Tot (bbl)	Comb Pump Rate (bbl/min)	Comment
Event	1	Call Out 05:30	3/8/2014	00:00:00	USER					ALL HES CREW
Event	2	Crew Called Out 05:30	3/8/2014	14:20:34	USER					
Event	3	Arrive At Yard 08:00	3/8/2014	14:20:47	USER					CREW WAS ROLLED FROM ANOTHER JOB
Event	4	Pre-Convoy Safety Meeting 09:00	3/8/2014	14:21:10	USER					1 F-550 PICKUP, 1 ELITE PUMP TRUCK, 2 660 BULK TRUCKS
Event	5	Crew Leaves Yard 09:10	3/8/2014	14:21:44	USER					ALL HES CREW
Event	6	Arrive At Location 11:00	3/8/2014	14:22:02	USER					HES CREW ARRIVED ON TIME RIG WAS RUNNING CASING, HES HAD TO WAIT TO COME ON TO LOCATION FOR THRID PARTY EQUIPMENT TO BE MOVED
Event	7	Assesment Of Location 11:30	3/8/2014	14:22:28	USER					RIG WAS RUNNING CASING HES WAITED TO SPOT AND RIG UP
Event	8	Pre-Rig Up Safety Meeting 17:00	3/8/2014	14:23:00	USER					ALL HES CREW WAS INVOLVED AND JSA WAS FILLED OUT DISCUSSED AND SIGNED
Event	9	Rig Up Equipment 17:10	3/8/2014	14:23:11	USER					RIG UP IRON TO STAND PIPE, WATER HOSES TO UPRIGHT AND DAY TANK, RIG UP BULK EQUIPMENT TO PUMP TRUCK
Event	10	Pre-Job Safety Meeting 17:45	3/8/2014	14:23:37	USER					ALL HES CREW AND RIG CREW INVOLVED
Event	11	Start Job 18:40	3/8/2014	17:51:47	COM5	0.90	0.00	0.0	0.00	TD: 1554ft TP: 1544ft SJ: 46.5ft OH: 13 1/2" CSG: 9 5/8" 32.3# H-40 MUD: 9.4# VISC: 40
Event	12	Fill Lines 18:41	3/8/2014	18:40:47	COM5	3.07	-3.00	0.0	0.00	FILL LINES
Event	13	Test Lines 18:45	3/8/2014	18:45:26	USER	8.52	3047.00	2.0	0.00	TEST LINES TO 3000 PSI
Event	14	Pump Spacer 18:48	3/8/2014	18:47:49	USER	8.46	17.00	0.0	0.80	20 BBL FRESH WATER SPACER
Event	15	Pump Lead Cement 18:57	3/8/2014	18:57:36	USER	8.41	133.00	0.3	4.10	205 SKS VARICEM 12.3PPG 2.38YIELD 13.77 GAL/SK WEIGHT VERIFIED THROUGHOUT LEAD CEMENT VIA MUD SCALES
Event	16	Pump Tail Cement 19:12	3/8/2014	19:12:39	USER	12.88	260.00	1.1	6.20	175 SKS VARICEM 12.8PPG 2.11YIELD 11.77GAL/SK WEIGHT VERIFIED THROUGHOUT TAIL CEMENT VIA MUD SCALES

Event	17	Shutdown/Drop Top Plug 19:22	3/8/2014	19:21:59	USER	12.85	255.00	62.8	6.10	HES WASHED UP ON TOP OF PLUG READY TANKS FOR DISPLACEMENT
Event	18	Pump Displacement 19:26	3/8/2014	19:26:33	USER	11.02	18.00	0.1	1.80	PLUG AWAY NO PROBLEMS
Event	19	Slow Rate 19:39	3/8/2014	19:39:50	USER	8.20	425.00	108.9	3.10	SLOW RATE TO 2 BBL/MIN TO BUMP PLUG
Event	20	Bump Plug 19:43	3/8/2014	19:43:32	USER	8.25	980.00	115.4	0.00	BUMPED PLUG AT 330 PSI TOOK TO 990 PSI
Event	21	Release Pressure/Check Floats 19:46	3/8/2014	19:46:19	USER	8.23	744.00	115.4	0.00	FLOATS HELD 1 BBL BACK TO TANKS, 4 BBLs OF CEMENT TO SURFACE
Event	22	End Job 19:48	3/8/2014	19:48:01	USER	8.21	6.00	115.4	0.00	THANKS FOR CHOOSING HALLIBURTON CEMENT CARL KUKUS AND CREW
Event	23	Pre-Rig Down Safety Meeting 20:00	3/8/2014	19:48:02	USER	8.22	6.00	115.4	0.00	ALL HES
Event	24	Rig Down Equipment 20:15	3/8/2014	19:48:03	USER	8.21	6.00	115.4	0.00	RIG DOWN PUMP TRUCK BULK EQUIPMENT AND WATER HOSES
Event	25	Pre-Convoy Safety Meeting 20:30	3/8/2014	19:48:04	USER	8.20	6.00	115.4	0.00	1 F-550, 1 ELITE PUMP TRUCK 2 660 BULK TRUCKS
Event	26	Crew Leaves Location 21:00	3/8/2014	19:48:05	USER	8.19	6.00	115.4	0.00	JOURNEY MADE ALL HES EMPLOYEES LEAVE LOCATION

WPX/Federal/PA 432-21/SURFACE 9 5/8"



— DH Density (ppg)
 — PS Pump Press (psi)
 — Pump Stg Tot (bbl)
 — Comb Pump Rate (bbl/min)

① Call Out 05:30 n/a;n/a;n/a;n/a	⑧ Pre-Rig Up Safety Meeting 17:00 n/a;n/a;n/a;n/a	⑮ Pump Lead Cement 18:57 8.41;133;0.3;4.1	22 End Job 19:48 8.21;6;115.4;0
② Crew Called Out 05:30 n/a;n/a;n/a;n/a	⑨ Rig Up Equipment 17:10 n/a;n/a;n/a;n/a	⑯ Pump Tail Cement 19:12 12.88;260;1.1;6.2	23 Pre-Rig Down Safety Meeting 20:00 8.22;6;115.4;0
③ Arrive At Yard 08:00 n/a;n/a;n/a;n/a	⑩ Pre-Job Safety Meeting 17:45 n/a;n/a;n/a;n/a	⑰ Shutdown/Drop Top Plug 19:22 12.85;255;62.8;6.1	24 Rig Down Equipment 20:15 8.21;6;115.4;0
④ Pre-Convoy Safety Meeting 09:00 n/a;n/a;n/a;n/a	⑪ Start Job 18:40 0.9;0;0;0	⑱ Pump Displacement 19:26 11.02;18;0.1;1.8	25 Pre-Convoy Safety Meeting 20:30 8.2;6;115.4;0
⑤ Crew Leaves Yard 09:10 n/a;n/a;n/a;n/a	⑫ Fill Lines 18:41 3.07;-3;0;0	⑲ Slow Rate 19:39 8.2;425;108.9;3.1	26 Crew Leaves Location 21:00 8.19;6;115.4;0
⑥ Arrive At Location 11:00 n/a;n/a;n/a;n/a	⑬ Test Lines 18:45 8.52;3047;2;0	20 Bump Plug 19:43 8.25;980;115.4;0	
⑦ Assessment Of Location 11:30 n/a;n/a;n/a;n/a	⑭ Pump Spacer 18:48 8.46;17;0;0.8	21 Release Pressure/Check Floats 19:46 8.23;744;115.4;0	

▼ **HALLIBURTON** | iCem® Service

Created: 2014-03-08 14:15:12, Version: 3.0.121

Edit

Customer: WPX ENERGY ROCKY MOUNTAIN LLC-EBUS

Job Date : 3/8/2014 5:51:18 PM

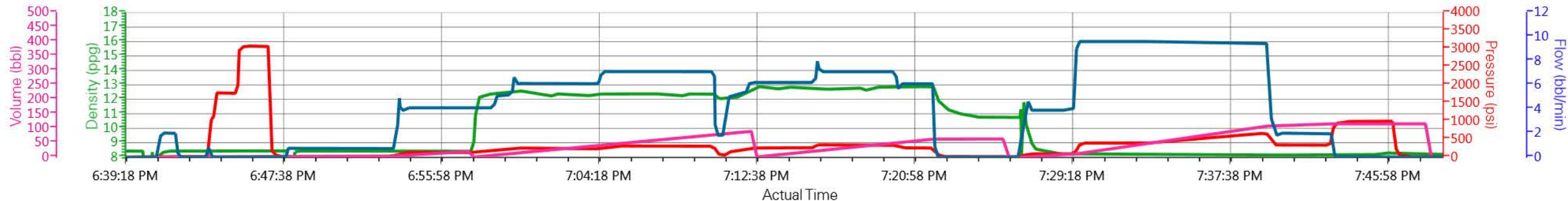
Well : Federal PA 432-21

Representative: Beaude Oaks

Sales Order #: 0901174978

Supervisor/Operator: Carl Kukus/Rob Eickhoff E-9

WPX/Federal/PA 432-21/SURFACE 9 5/8"



— DH Density (ppg)
 — PS Pump Press (psi)
 — Pump Stg Tot (bbl)
 — Comb Pump Rate (bbl/min)

▼ **HALLIBURTON** | iCem® Service

Created: 2014-03-08 14:15:12, Version: 3.0.121

Edit

Customer: WPX ENERGY ROCKY MOUNTAIN LLC-EBUS

Job Date : 3/8/2014 5:51:18 PM

Well : Federal PA 432-21

Representative: Beaude Oaks

Sales Order #: 0901174978

Supervisor/Operator: Carl Kukus/Rob Eickhoff E-9

Sales Order #: 0901174978	Line Item: 10	Survey Conducted Date: 3/12/2014
Customer: WPX ENERGY ROCKY MOUNTAIN LLC-EBUS		Job Type (BOM): CMT SURFACE CASING BOM
Customer Representative:		API / UWI: (leave blank if unknown) 05-045-22040-00
Well Name: FEDERAL		Well Number: 0080125684
Well Type: DIRECTIONAL GAS	Well Country: USA	
H2S Present: No	Well State: COLORADO	Well County: GARFIELD

Dear Customer,

We hope that you were satisfied with the service quality of this job performed by Halliburton. It is the aim of our management and service personnel to deliver equipment and service of a standard unmatched in the service sector of the energy industry.

Please take the time to let us know if our performance met with your satisfaction. Please be as critical as possible to ensure we constantly improve our service. Your comments are of great value to us and are intended for the exclusive use of Halliburton.

CUSTOMER SATISFACTION SURVEY

CATEGORY	CUSTOMER SATISFACTION RESPONSE	
Survey Conducted Date	The date the survey was conducted	3/12/2014
Survey Interviewer	The survey interviewer is the person who initiated the survey.	HB44726
Customer Participation	Did the customer participate in this survey? (Y/N)	No
Customer Representative	Enter the Customer representative name	
HSE	Was our HSE performance satisfactory? Circle Y or N	
Equipment	Were you satisfied with our Equipment? Circle Y or N	
Personnel	Were you satisfied with our people? Circle Y or N	
Customer Comment	Customer's Comment	

CUSTOMER SIGNATURE

Sales Order #: 0901174978	Line Item: 10	Survey Conducted Date: 3/12/2014
Customer: WPX ENERGY ROCKY MOUNTAIN LLC-EBUS		Job Type (BOM): CMT SURFACE CASING BOM
Customer Representative:		API / UWI: (leave blank if unknown) 05-045-22040-00
Well Name: FEDERAL		Well Number: 0080125684
Well Type: DIRECTIONAL GAS	Well Country: USA	
H2S Present: No	Well State: COLORADO	Well County: GARFIELD

KEY PERFORMANCE INDICATORS

General	
Survey Conducted Date	3/12/2014
The date the survey was conducted	

Cementing KPI Survey	
Type of Job	0
Select the type of job. (Cementing or Non-Cementing)	
Select the Maximum Deviation range for this Job	Vertical
What is the highest deviation for the job you just completed? This may not be the maximum well deviation.	
Total Operating Time (hours)	4
Total Operating Hours Including Rig-up, Pumping, Rig-down. Enter in decimal format.	
HSE Incident, Accident, Injury	No
HSE Incident, Accident, Injury. This should be recordable incidents only.	
Was the job purpose achieved?	Yes
Was the job delivered correctly as per customer agreed design?	
Operating Hours (Pumping Hours)	1
Total number of hours pumping fluid on this job. Enter in decimal format.	
Customer Non-Productive Rig Time (hrs)	0
Lost time due to Halliburton in the start, execution, or completion of an ordered service or product, or delays in a follow-on service. Enter in decimal format. 0 if none.	
Type of Rig Classification Job Was Performed	Drilling Rig (Portable)
Type Of Rig (classification) Job Was Performed On	
Number Of JSAs Performed	6
Number Of Jsas Performed	
Number of Unplanned Shutdowns	0
Unplanned shutdown is when injection stops for any period of time.	
Was this a Primary Cement Job (Yes / No)	Yes

Sales Order #: 0901174978	Line Item: 10	Survey Conducted Date: 3/12/2014
Customer: WPX ENERGY ROCKY MOUNTAIN LLC-EBUS		Job Type (BOM): CMT SURFACE CASING BOM
Customer Representative:		API / UWI: (leave blank if unknown) 05-045-22040-00
Well Name: FEDERAL		Well Number: 0080125684
Well Type: DIRECTIONAL GAS	Well Country: USA	
H2S Present: No	Well State: COLORADO	Well County: GARFIELD

Primary Cement Job= Casing job, Liner job, or Tie-back job.	
Did We Run Wiper Plugs? Did We Run Top And Bottom Casing Wiper Plugs?	Top
Mixing Density of Job Stayed in Designed Density Range (0-100%) Density Range defined as +/- .20 ppg. Calculation: Total BBLs cement mixed at designed density divided by total BBLs of cement multiplied by 100	85
Was Automated Density Control Used? Was Automated Density Control (ADC) Used ?	Yes
Pump Rate (percent) of Job Stayed At Designed Pump Rate Pump Rate range defined as +/- 1bbl/min. Calculation: Total BBLs of fluid pumped at the designed rate divided by Total BBLs of fluid pumped, multiplied by 100	8
Nbr of Remedial Sqz Jobs Rqd - Competition Number Of Remedial Squeeze Jobs Required After Primary Job Performed By Competition	0
Nbr of Remedial Plug Jobs Rqd - HES Number Of Remedial Plug Jobs Needed After Primary Plug Pumped By HES	0
Nbr of Remedial Sqz Jobs Rqd - HES Number Of Remedial Squeeze Jobs Required After Primary Job Performed By HES	0