

2013 ANNUAL PROJECT SUMMARY TABLE

Incident Date	Remediation No.	Well Name	API	Status	NFA Submitted	NFA Approved Date	2013 Site Summary (monitoring/remediation/ wells installed or destroyed)	Wells Sampled (Last Quarter) 2013	Wells Exceeding 5 ug/L Benzene (Last Quarter Sampled 2013)	Benzene Range (ug/L) (Last Quarter 2013)	POC Established	2014 Recommendations	Well Reduction Request
6/26/2008	4369	Wass #5	05-123-13781	NFA	NO	N/A	Quarterly groundwater monitoring since April-2010. MW12, MW13, and MW14 were removed from monitoring in 2013.	MW01-MW14 (July-2013) Wells not sampled since July-2013. Pending NFA Request.	None	ND	YES	NFA request will be submitted. Monitoring wells will be abandoned upon NFA approval.	N/A

## Notes:

N/A - Not Applicable

ND - Non-Detect

NFA - No Further Action

POC - Point of Compliance

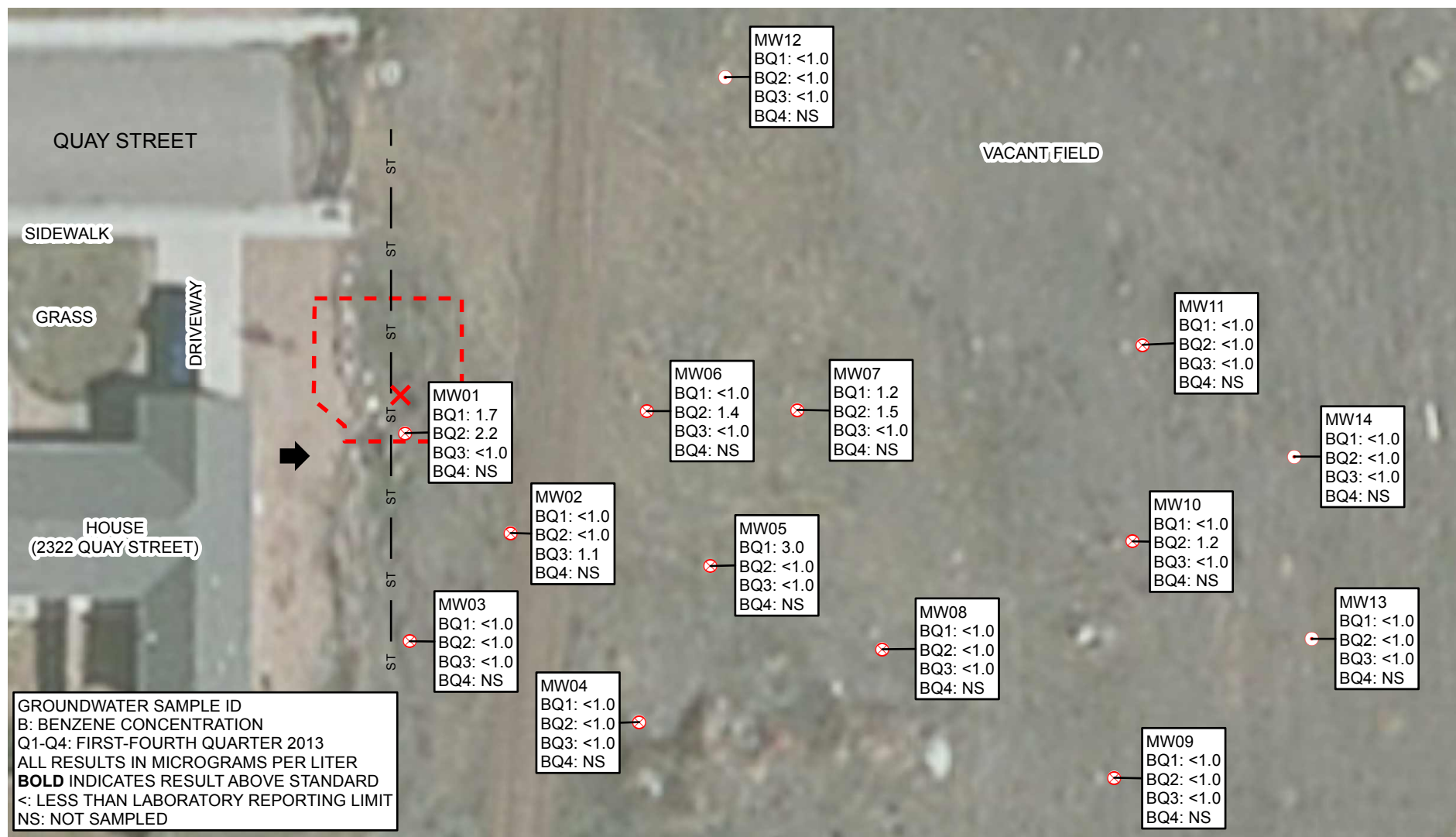
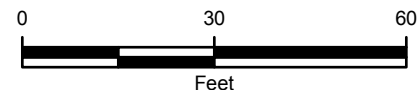


IMAGE COURTESY OF ESRI

## LEGEND

- X RELEASE
- ⊗ MONITORING WELL
- ⊙ REMOVED FROM MONITORING PROGRAM
- ↑ ESTIMATED GROUNDWATER FLOW DIRECTION
- ST — STORMWATER LINE

--- EXCAVATION EXTENT (2008)



**FIGURE 1**  
**SITE MAP**  
**WASS #5**  
**NENE SEC 25-T5N-R66W**  
**WELD COUNTY, COLORADO**  
**KERR-MCGEE OIL & GAS ONSHORE LP**



**TABLE 1**  
**GROUNDWATER ANALYTICAL AND FIELD RESULTS**  
**WASS #5**  
**WELD COUNTY, COLORADO**  
**KERR-MCGEE OIL & GAS ONSHORE LP**

<b>Well Name</b>	<b>Date</b>	<b>Benzene (ug/L)</b>	<b>Toluene (ug/L)</b>	<b>Ethylbenzene (ug/L)</b>	<b>Xylenes (ug/L)</b>	<b>Depth Water/ (Product Thickness) (ft bgs)</b>
MW01	04/21/2010	<b>21</b>	1.0	83	440	13.37
	07/02/2010	<b>110</b>	<1.0	<1.0	2.6	7.41
	10/08/2010	<b>180</b>	<1.0	130	110	8.69
	01/24/2011	<b>420</b>	<1.0	130	290	9.42
	04/25/2011	<b>230</b>	<1.0	190	370	9.89
	07/26/2011	<b>75</b>	<1.0	74	160	8.08
	10/20/2011	4.1	<1.0	3.6	3.4	7.57
	01/16/2012	<b>5.8</b>	<1.0	8.7	<1.0	8.69
	04/12/2012	2.7	<1.0	8.2	<1.0	9.36
	07/06/2012	1.5	<1.0	3.1	<1.0	9.24
	10/10/2012	4.4	<1.0	8.1	<1.0	8.84
	01/29/2013	1.7	<1.0	1.1	<1.0	8.69
	04/22/2013	2.2	<1.0	2.3	<1.0	9.08
	07/17/2013	<1.0	<1.0	<1.0	<1.0	8.39
MW02	04/21/2010	<b>54</b>	1.0	140	480	8.90
	07/02/2010	<b>6.6</b>	<1.0	5.6	23	7.43
	10/08/2010	<b>11</b>	<1.0	5.3	8.7	8.45
	01/24/2011	4.2	<1.0	9.4	<1.0	9.32
	04/25/2011	1.1	<1.0	<1.0	<1.0	9.80
	07/26/2011	<b>8.0</b>	<1.0	3.3	<1.0	8.06
	10/20/2011	<b>16</b>	<1.0	18	3.9	7.94
	01/16/2012	<b>7.9</b>	<1.0	<1.0	<1.0	8.52
	04/12/2012	<b>5.0</b>	<1.0	1.1	<1.0	9.18
	07/06/2012	<1.0	<1.0	<1.0	<1.0	9.13
	10/10/2012	1.3	<1.0	<1.0	<1.0	8.40
	01/29/2013	<1.0	<1.0	<1.0	<1.0	8.26
	04/22/2013	<1.0	<1.0	<1.0	<1.0	9.01
	07/17/2013	1.1	<1.0	<1.0	<1.0	8.23
MW03	04/21/2010	<1.0	<1.0	<1.0	4.0	14.16
	07/02/2010	<1.0	<1.0	<1.0	<1.0	7.38
	10/08/2010	<1.0	<1.0	<1.0	<1.0	8.17
	01/24/2011	<1.0	<1.0	<1.0	<1.0	9.39
	04/25/2011	<1.0	<1.0	<1.0	<1.0	10.00
	07/26/2011	<1.0	<1.0	<1.0	<1.0	7.93
	10/20/2011	<1.0	<1.0	<1.0	<1.0	7.75
	01/16/2012	<1.0	<1.0	<1.0	<1.0	8.61
	04/12/2012	<1.0	<1.0	<1.0	<1.0	9.36
	07/06/2012	<1.0	<1.0	<1.0	<1.0	9.30
	10/10/2012	<1.0	<1.0	<1.0	<1.0	7.98
	01/29/2013	<1.0	<1.0	<1.0	<1.0	7.83
	04/22/2013	<1.0	<1.0	<1.0	<1.0	9.33
	07/17/2013	<1.0	<1.0	<1.0	<1.0	7.98



**TABLE 1 (Continued)**  
**GROUNDWATER ANALYTICAL AND FIELD RESULTS**  
**WASS #5**  
**WELD COUNTY, COLORADO**  
**KERR-MCGEE OIL & GAS ONSHORE LP**

<b>Well Name</b>	<b>Date</b>	<b>Benzene (ug/L)</b>	<b>Toluene (ug/L)</b>	<b>Ethylbenzene (ug/L)</b>	<b>Xylenes (ug/L)</b>	<b>Depth Water/ (Product Thickness) (ft bgs)</b>
MW04	06/15/2010	<1.0	<1.0	<1.0	<1.0	NM
	07/02/2010	<1.0	<1.0	<1.0	<1.0	7.79
	10/08/2010	<1.0	<1.0	<1.0	<1.0	8.77
	01/24/2011	<1.0	<1.0	<1.0	<1.0	9.47
	04/25/2011	<1.0	<1.0	<1.0	<1.0	10.04
	07/26/2011	<1.0	<1.0	<1.0	<1.0	8.58
	10/20/2011	<1.0	<1.0	<1.0	<1.0	8.54
	01/16/2012	<1.0	<1.0	<1.0	<1.0	8.69
	04/12/2012	<1.0	<1.0	<1.0	<1.0	9.78
	07/06/2012	<1.0	<1.0	<1.0	<1.0	9.73
	10/10/2012	<1.0	<1.0	<1.0	<1.0	8.74
	01/29/2013	<1.0	<1.0	<1.0	<1.0	8.62
	04/22/2013	<1.0	<1.0	<1.0	<1.0	9.20
	07/17/2013	<1.0	<1.0	<1.0	<1.0	9.04
MW05	06/15/2010	<b>110</b>	<1.0	10	29	NM
	07/02/2010	<b>11</b>	<1.0	1.6	3.6	8.28
	10/08/2010	<b>47</b>	<1.0	3.4	9.2	9.19
	01/24/2011	<b>1800</b>	<1.0	61	98	9.79
	04/25/2011	<b>19</b>	<1.0	1.1	2.7	10.29
	07/26/2011	<b>230</b>	<1.0	18	60	8.93
	10/20/2011	<b>81</b>	<1.0	5.3	7.6	9.13
	01/16/2012	<b>60</b>	<1.0	<1.0	<1.0	9.09
	04/12/2012	<b>15</b>	<1.0	7.0	9.4	9.93
	07/06/2012	<1.0	<1.0	<1.0	<1.0	9.83
	10/10/2012	2.9	<1.0	3.4	<1.0	9.00
	01/29/2013	3.0	<1.0	8.1	<1.0	8.48
	04/22/2013	<1.0	<1.0	<1.0	<1.0	9.78
	07/17/2013	<1.0	<1.0	<1.0	<1.0	9.43
MW06	07/02/2010	<b>2500</b>	<1.0	250	670	8.38
	10/08/2010	<b>3600</b>	<1.0	300	<b>1800</b>	9.52
	01/24/2011	<b>1600</b>	<1.0	140	630	10.00
	04/25/2011	<b>6.3</b>	<1.0	1.5	6.6	10.32
	07/26/2011	<b>1100</b>	<1.0	69	250	8.93
	10/20/2011	<b>1500</b>	<1.0	51	3.3	9.01
	01/16/2012	<b>520</b>	<1.0	<1.0	<1.0	9.31
	04/12/2012	<b>120</b>	<1.0	<1.0	<1.0	9.89
	07/06/2012	<b>31</b>	<1.0	<1.0	<1.0	9.86
	10/10/2012	4.6	<1.0	45	<1.0	9.97
	01/29/2013	<1.0	<1.0	<1.0	<1.0	10.05
	04/22/2013	1.4	<1.0	15	<1.0	9.92
	07/17/2013	<1.0	<1.0	<1.0	<1.0	9.17



**TABLE 1 (Continued)**  
**GROUNDWATER ANALYTICAL AND FIELD RESULTS**  
**WASS #5**  
**WELD COUNTY, COLORADO**  
**KERR-MCGEE OIL & GAS ONSHORE LP**

<b>Well Name</b>	<b>Date</b>	<b>Benzene (ug/L)</b>	<b>Toluene (ug/L)</b>	<b>Ethylbenzene (ug/L)</b>	<b>Xylenes (ug/L)</b>	<b>Depth Water/ (Product Thickness) (ft bgs)</b>
MW07	07/02/2010	<b>2900</b>	<1.0	17	560	8.80
	10/08/2010	<b>1800</b>	<1.0	120	130	9.81
	01/24/2011	<b>830</b>	<1.0	120	78	10.17
	04/25/2011	<b>240</b>	<1.0	110	24	10.54
	07/26/2011	<b>120</b>	<1.0	120	4.8	9.35
	10/20/2011	<b>110</b>	<1.0	89	<1.0	9.62
	01/16/2012	1.7	<1.0	110	<1.0	9.67
	04/12/2012	1.9	<1.0	140	<1.0	10.24
	07/06/2012	2.0	<1.0	<1.0	<1.0	10.21
	10/10/2012	<1.0	<1.0	<1.0	<1.0	10.44
	01/29/2013	1.2	<1.0	<1.0	<1.0	10.31
	04/22/2013	1.5	<1.0	2.0	<1.0	10.17
	07/17/2013	<1.0	<1.0	<1.0	<1.0	9.51
MW08	07/02/2010	<b>950</b>	<1.0	240	700	8.22
	10/08/2010	<b>290</b>	<1.0	130	100	9.32
	01/24/2011	<b>50</b>	<1.0	56	<1.0	9.73
	04/25/2011	2.2	<1.0	8.0	<1.0	10.14
	07/26/2011	<b>9.8</b>	<1.0	62	<1.0	9.00
	10/20/2011	1.1	<1.0	3.9	<1.0	9.40
	01/16/2012	<1.0	<1.0	14	<1.0	9.15
	04/12/2012	<1.0	<1.0	14	<1.0	9.64
	07/06/2012	<1.0	<1.0	4.3	<1.0	9.50
	10/10/2012	<1.0	<1.0	<1.0	<1.0	10.03
	01/29/2013	<1.0	<1.0	<1.0	<1.0	9.90
	04/22/2013	<1.0	<1.0	<1.0	<1.0	9.69
	07/17/2013	<1.0	<1.0	<1.0	<1.0	9.18
MW09	08/23/2010	<1.0	<1.0	<1.0	<1.0	8.96
	10/08/2010	<1.0	<1.0	<1.0	<1.0	9.67
	01/24/2011	<1.0	<1.0	<1.0	<1.0	9.87
	04/25/2011	<1.0	<1.0	<1.0	<1.0	10.19
	07/26/2011	<1.0	<1.0	<1.0	<1.0	9.25
	10/20/2011	<1.0	<1.0	<1.0	<1.0	9.75
	01/16/2012	<1.0	<1.0	<1.0	<1.0	9.39
	04/12/2012	<1.0	<1.0	<1.0	<1.0	10.09
	07/06/2012	<1.0	<1.0	<1.0	<1.0	9.99
	10/10/2012	<1.0	<1.0	<1.0	<1.0	10.56
	01/29/2013	<1.0	<1.0	<1.0	<1.0	10.44
	04/22/2013	<1.0	<1.0	<1.0	<1.0	9.97
	07/17/2013	<1.0	<1.0	<1.0	<1.0	9.79



**TABLE 1 (Continued)**  
**GROUNDWATER ANALYTICAL AND FIELD RESULTS**  
**WASS #5**  
**WELD COUNTY, COLORADO**  
**KERR-MCGEE OIL & GAS ONSHORE LP**

<b>Well Name</b>	<b>Date</b>	<b>Benzene (ug/L)</b>	<b>Toluene (ug/L)</b>	<b>Ethylbenzene (ug/L)</b>	<b>Xylenes (ug/L)</b>	<b>Depth Water/ (Product Thickness) (ft bgs)</b>
MW10	08/23/2010	2.5	<1.0	3.2	12	9.59
	10/08/2010	<b>110</b>	<1.0	18	130	10.20
	01/24/2011	<b>69</b>	<1.0	6.8	43	10.39
	04/25/2011	<b>28</b>	<1.0	2.1	13	10.57
	07/26/2011	<b>140</b>	<1.0	66	260	9.64
	10/20/2011	<b>31</b>	<1.0	37	170	10.02
	01/16/2012	<1.0	<1.0	<1.0	<1.0	9.91
	04/12/2012	1.5	<1.0	<1.0	<1.0	10.47
	07/06/2012	1.9	<1.0	<1.0	<1.0	10.40
	10/10/2012	2.4	<1.0	<1.0	<1.0	11.12
	01/29/2013	<1.0	<1.0	<1.0	2.6	10.97
	04/22/2013	1.2	<1.0	<1.0	<1.0	10.41
	07/17/2013	<1.0	<1.0	<1.0	<1.0	9.97
MW11	08/23/2010	<1.0	<1.0	<1.0	<1.0	9.86
	10/08/2010	<1.0	<1.0	<1.0	<1.0	10.45
	01/24/2011	<b>11</b>	<1.0	<1.0	<1.0	10.56
	04/25/2011	<b>6.9</b>	<1.0	<1.0	<1.0	10.72
	07/26/2011	<1.0	<1.0	<1.0	<1.0	9.83
	10/20/2011	<1.0	<1.0	<1.0	<1.0	10.12
	01/16/2012	<1.0	<1.0	<1.0	<1.0	10.06
	04/12/2012	<1.0	<1.0	<1.0	<1.0	10.53
	07/06/2012	<1.0	<1.0	<1.0	<1.0	10.42
	10/10/2012	<1.0	<1.0	<1.0	<1.0	11.31
	01/29/2013	<1.0	<1.0	<1.0	<1.0	11.14
	04/22/2013	<1.0	<1.0	<1.0	<1.0	10.54
	07/17/2013	<1.0	<1.0	<1.0	<1.0	9.96
MW12	08/23/2010	<1.0	<1.0	<1.0	<1.0	13.78
	10/08/2010	<1.0	<1.0	<1.0	<1.0	10.34
	01/24/2011	<1.0	<1.0	<1.0	<1.0	10.88
	04/25/2011	<1.0	<1.0	<1.0	<1.0	11.13
	07/26/2011	<1.0	<1.0	<1.0	<1.0	9.76
	10/20/2011	<1.0	<1.0	<1.0	<1.0	9.72
	01/16/2012	<1.0	<1.0	<1.0	<1.0	10.38
	04/12/2012	<1.0	<1.0	<1.0	<1.0	10.95
	07/06/2012	<1.0	<1.0	<1.0	<1.0	10.91
	10/10/2012	<1.0	<1.0	<1.0	<1.0	10.90
	01/29/2013	<1.0	<1.0	<1.0	<1.0	10.75
	04/22/2013	<1.0	<1.0	<1.0	<1.0	10.81
	07/17/2013	<1.0	<1.0	<1.0	<1.0	10.35



**TABLE 1 (Continued)**  
**GROUNDWATER ANALYTICAL AND FIELD RESULTS**  
**WASS #5**  
**WELD COUNTY, COLORADO**  
**KERR-MCGEE OIL & GAS ONSHORE LP**

Well Name	Date	Benzene (ug/L)	Toluene (ug/L)	Ethylbenzene (ug/L)	Xylenes (ug/L)	Depth Water/ (Product Thickness) (ft bgs)
MW13	11/09/2010	<b>49</b>	<1.0	160	370	10.43
	01/24/2011	2.2	<1.0	19	9.9	10.63
	04/25/2011	<1.0	<1.0	10	<1.0	10.78
	07/26/2011	<1.0	<1.0	19	<1.0	9.94
	10/20/2011	<1.0	<1.0	7.1	<1.0	10.39
	01/16/2012	<1.0	<1.0	2.4	<1.0	10.17
	04/12/2012	<1.0	<1.0	1.0	<1.0	10.42
	07/06/2012	<1.0	<1.0	<1.0	<1.0	10.38
	10/10/2012	<1.0	<1.0	<1.0	<1.0	11.60
	01/29/2013	<1.0	<1.0	<1.0	<1.0	11.42
	04/22/2013	<1.0	<1.0	<1.0	<1.0	10.67
	07/17/2013	<1.0	<1.0	<1.0	<1.0	10.02
MW14	11/09/2010	<1.0	<1.0	<1.0	<1.0	11.12
	01/24/2011	<1.0	<1.0	<1.0	<1.0	10.79
	04/25/2011	<1.0	<1.0	<1.0	<1.0	10.87
	07/26/2011	<1.0	<1.0	<1.0	<1.0	10.08
	10/20/2011	<1.0	<1.0	<1.0	<1.0	10.43
	01/16/2012	<1.0	<1.0	<1.0	<1.0	10.33
	04/12/2012	<1.0	<1.0	<1.0	<1.0	10.51
	07/06/2012	<1.0	<1.0	<1.0	<1.0	10.41
	10/10/2012	<1.0	<1.0	<1.0	<1.0	11.75
	01/29/2013	<1.0	<1.0	<1.0	<1.0	11.63
	04/22/2013	<1.0	<1.0	<1.0	<1.0	10.75
	07/17/2013	<1.0	<1.0	<1.0	<1.0	9.93
Colo GW Quality Standards		<b>5</b>	<b>1000</b>	<b>700</b>	<b>1400</b>	

Notes: NM - Not Measured

ug/L - micrograms per Liter

NA - Not Analyzed/Not Available

GW - Groundwater

ft bgs - feet below ground surface

< - less than laboratory reporting limit

Bold numbers indicate result equaled or exceeded standard.

