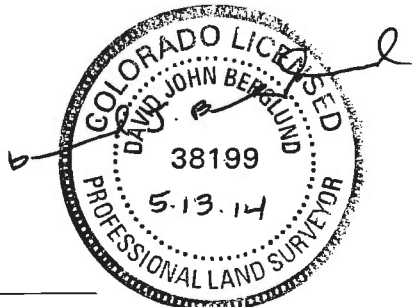


**WELL LOCATION DATA:**  
 LATITUDE: 40.39005°N  
 LONGITUDE: 104.68251°W  
 ELEVATION: 4672'  
 PDOP: 2.0  
 OPERATOR: C HOLMES  
 SURFACE USE: INDUSTRIAL  
 PROPOSED GROUND ELEVATION: 4673.0'

REVISIONS	0	1
	9/14/13	5/12/14
1ST SUBMITTAL	●	
2ND SUBMITTAL		●

#### LAND SURVEYOR'S CERTIFICATION

LAMP, RYNEARSON & ASSOCIATES, INC., OF FT. COLLINS, COLORADO HAS, IN ACCORDANCE WITH A REQUEST FROM COLLIN RICHARDSON FOR MINERAL RESOURCES, INC., DETERMINED THE SURFACE LOCATION OF THE WELL DESIGNATED AS GP-DAIRY 1-20-19 TO BE 658' FROM THE NORTH LINE AND 1305' FROM THE EAST LINE OF SECTION 20, TOWNSHIP 5 NORTH, RANGE 65 WEST OF THE 6TH P.M., WELD COUNTY, COLORADO.



DAVID JOHN BERGLUND  
 COLORADO PLS 38199  
 DATE OF SURVEY: 8/19/2010 (SECTION CONTROL)  
 DATE OF SURVEY: 08/23/2013 (WELL LOCATION)

#### NOTES:

- DISTANCES ARE MEASURED PERPENDICULAR TO NEAREST SECTION LINE AND ARE SHOWN ON THE SAME SIDE OF THE SECTION LINE WHERE THE WELL IS LOCATED.
- THIS MAP DOES NOT REPRESENT A MONUMENTED BOUNDARY SURVEY. SIXTEENTH CORNER LOCATIONS ARE COMPUTED, UNLESS OTHERWISE NOTED.
- BOTTOM HOLE LOCATIONS AND HORIZONTAL COMPLETION ZONE PROVIDED BY OTHERS.

#### BASIS OF BEARING:

THE NORTH LINE OF THE NORTHEAST QUARTER OF SECTION 20-T5N-R65W BEARS N89°44'34"E BETWEEN THE NORTH QUARTER CORNER OF SECTION 20 MONUMENTED WITH 3 1/4" A.C. IN R.B. STAMPED "PLS 36053" AND THE NORTHEAST CORNER OF SECTION 20 MONUMENTED WITH A 3 1/4" A.C. IN R.B. STAMPED "LS 34990" BASED ON THE COLORADO NORTH 0501 STATE PLANE COORDINATE SYSTEM.

ELEVATIONS ARE BASED ON NAVD 88, AS OBSERVED FROM GPS OBSERVATIONS

#### LEGEND

- ALIQUOT CORNER A.C. ALUMINUM CAP
- ⊙ BOTTOM HOLE R.B. RANGE BOX
- PROPOSED WELL

0 500 1000 2000  
 1"=1000' US SURVEY FEET

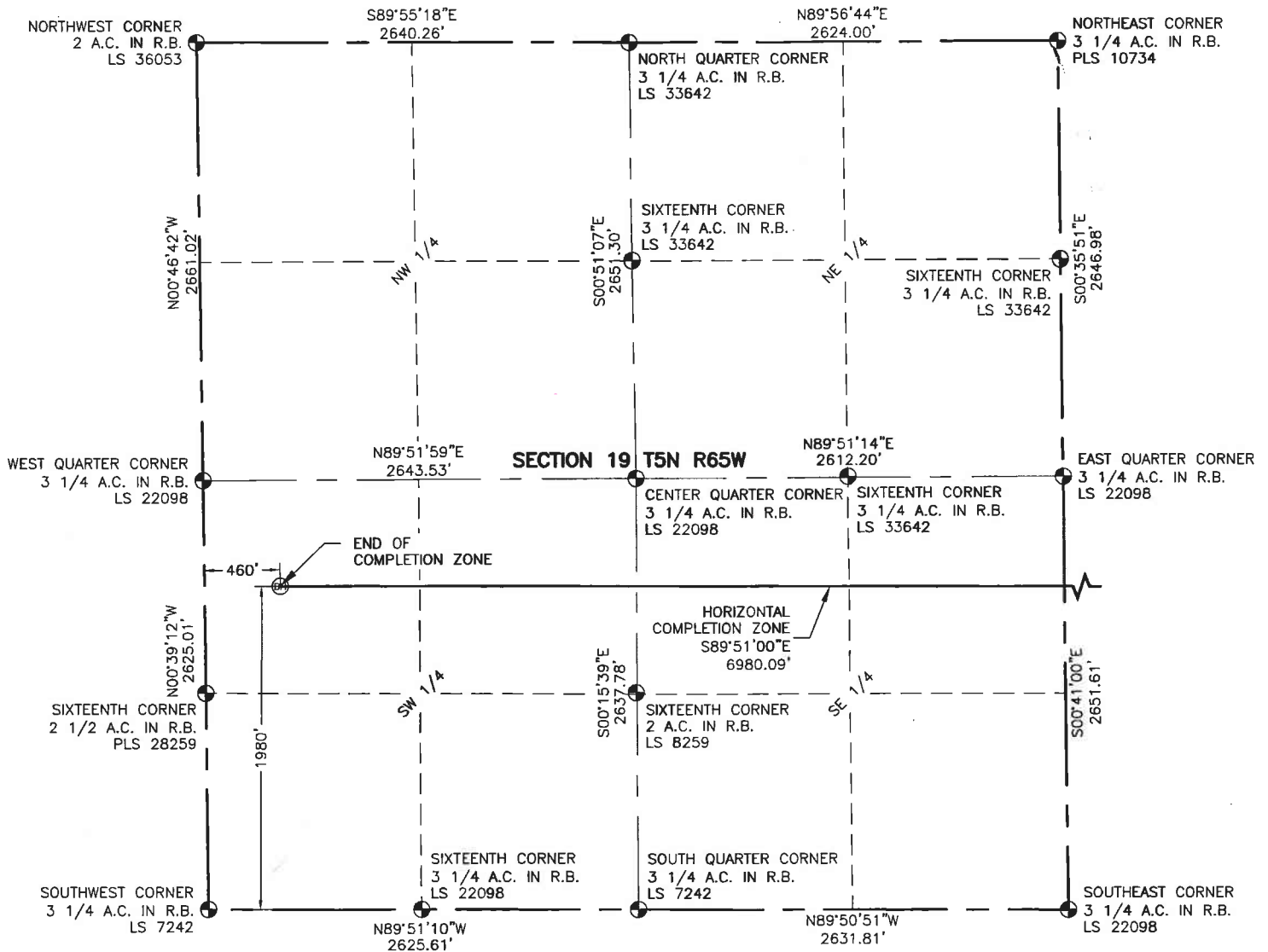


**LAMP RYNEARSON  
 & ASSOCIATES**

4715 Innovation Drive 970.226.0342 | P  
 Fort Collins, CO 80525 970.226.0879 | F  
 www.LRA-Inc.com

Proposed Well Location Exhibit  
 GP-Dairy 1-20-19  
 1 of 2

drawn by SSZ	date 5/12/14	cogcc id 332837	project - task number 0213001.01	book and page MR01/MR02	surface - location NE/4, NE/4, SEC20, T5N, R65W
path\filename P:\_Engineering\0213001.01\DRAWINGS\EXHIBITS\WELL PLATS\0213001-01EXWPOS1.dwg					



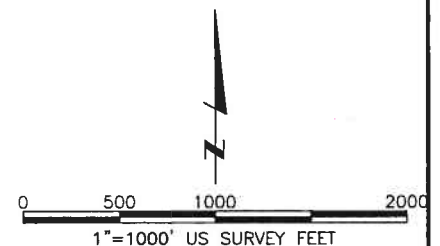
#### NOTES:

1. DISTANCES ARE MEASURED PERPENDICULAR TO NEAREST SECTION LINE AND ARE SHOWN ON THE SAME SIDE OF THE SECTION LINE WHERE THE WELL IS LOCATED.
2. THIS MAP DOES NOT REPRESENT A MONUMENTED BOUNDARY SURVEY. SIXTEENTH CORNER LOCATIONS ARE COMPUTED, UNLESS OTHERWISE NOTED.
3. BOTTOM HOLE LOCATIONS AND HORIZONTAL COMPLETION ZONE PROVIDED BY OTHERS.

#### LEGEND

- ALIQUOT CORNER
- ⊙ BOTTOM HOLE
- A.C. ALUMINUM CAP
- R.B. RANGE BOX

REVISIONS	0	1
	9/14/13	5/12/14
1ST SUBMITTAL	●	
2ND SUBMITTAL		●



**LAMP RYNEARSON  
& ASSOCIATES**

4715 Innovation Drive 970.226.0342 | P  
Fort Collins, CO 80525 970.226.0879 | F  
www.LRA-Inc.com

Proposed Well Location Exhibit  
GP-Dairy 1-20-19  
2 of 2

drawn by	date	cogcc id	project - task number	book and page	surface - location
SSZ	5/12/14	332837	0213001.01	MR01/MR02	NE/4, NE/4, SEC20, T5N, R65W
path\filename P:\_Engineering\0213001.01\DRAWINGS\EXHIBITS\WELL PLATS\0213001-01EXWPOS2.dwg					