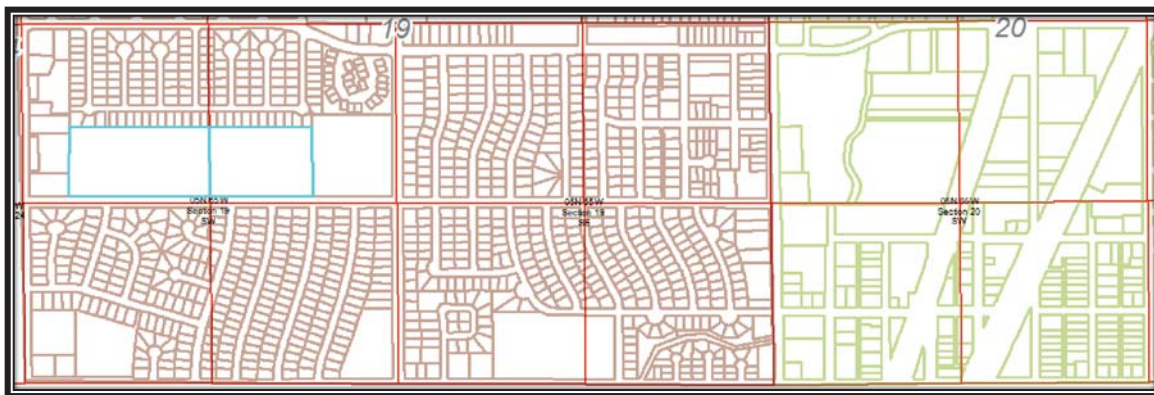


**Mineral Resources Spacing Units**  
30 Day Notice Given - Prepared by Jack D. Sattler

**2.) Spacing Unit: Dairy, Greeley Commerce Center**

Legal Description: S/2, Sec. 19, T5N, R65W and the SW/4 Sec. 20, T5N, R65W

Lessor:	Weld County School District 6
Lessee:	Mineral Resources, Inc.
Reception No.:	3858329
Reception Date:	7/11/2012
Lease Date:	6/13/2012
Net Acres:	20



Key: ■ Selected Lease for Spacing Unit