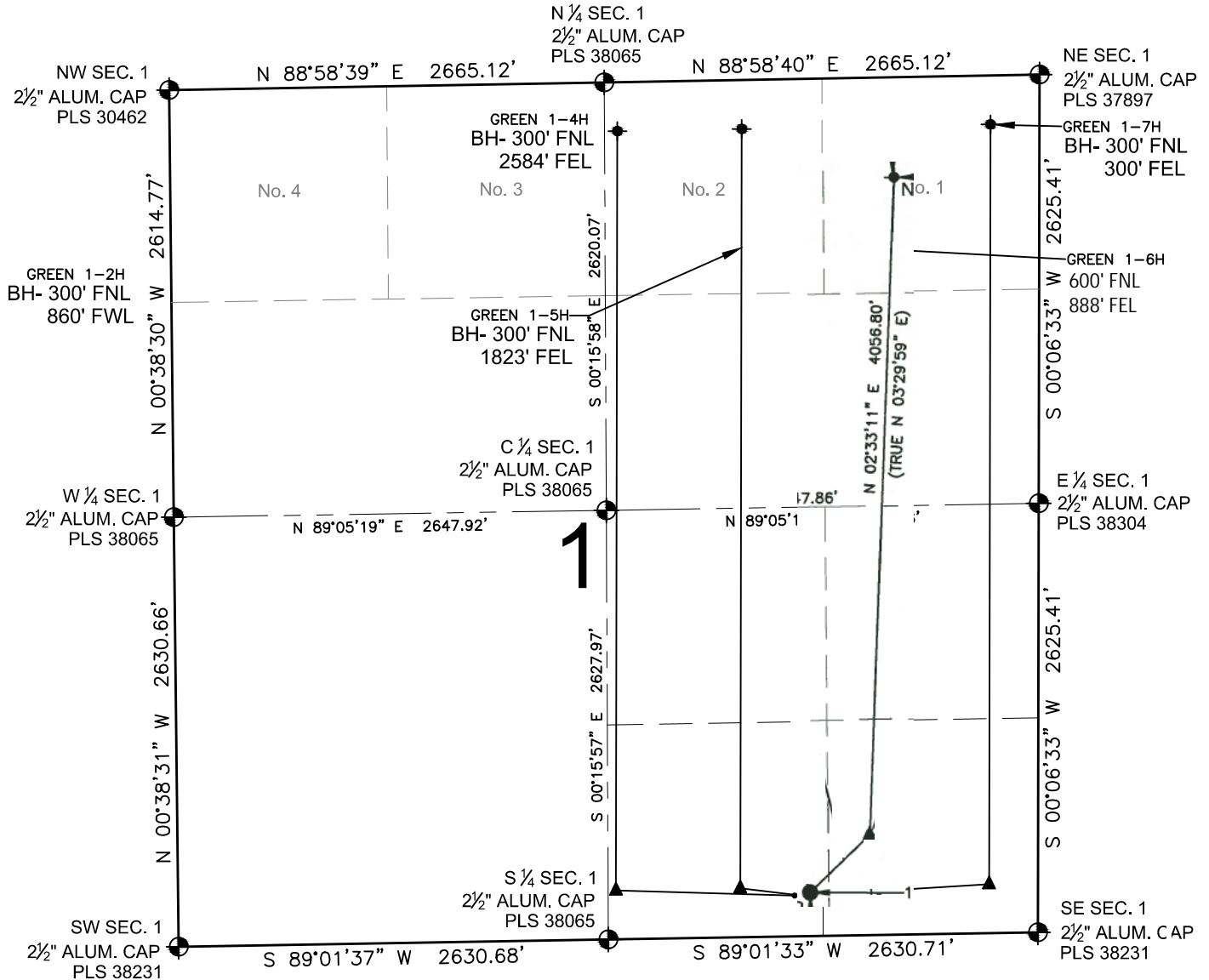


# GREEN 1-5H MULTI-WELL PLAN

SECTION 1, TOWNSHIP 7 NORTH, RANGE 60 WEST, 6TH P.M.



## LEGEND

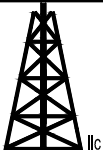
- = EXISTING MONUMENT
- = PROPOSED WELL
- ▲ = LANDING POINT
- ◆ = BOTTOM HOLE
- ◆ = EXISTING WELL
- BH= BOTTOM HOLE

## NOTES:

GREEN 1-4H TO BE AT 250' FSL, 1490' FEL.  
 BOTTOM HOLE AT 300' FNL & 2584' FEL.  
 GREEN 1-5H TO BE AT 250' FSL, 1460' FEL.  
 BOTTOM HOLE AT 300' FNL & 1823' FEL.  
 GREEN 1-6H TO BE AT 250' FSL, 1430' FEL.  
 BOTTOM HOLE AT 600' FNL & 888' FEL.  
 GREEN 1-7H TO BE AT 250' FSL, 1400' FEL.  
 BOTTOM HOLE AT 300' FNL & 300' FEL.

PREPARED BY:

**PFS**



Petroleum Field Services, LLC  
 7535 Hilltop Circle  
 Denver, CO 80221

RED HAWK PETROLEUM, LLC

FIELD DATE:  
 04-15-14

DRAWING DATE:  
 04-24-14

SURFACE LOCATION:

SW 1/4 SE 1/4, SEC. 1, T7N, R60W, 6TH P.M.  
 WELD COUNTY, COLORADO

