



7535 Hilltop Circle  
Denver, CO 80221  
[www.petro-fs.com](http://www.petro-fs.com)

June 9, 2014

Mr. Matt Lepore, Director  
Colorado Oil and Gas Conservation Commission  
1120 Lincoln Street, Suite 801  
Denver, Colorado 80203

**RE: COGCC Rule 318A.e.: Proposed Wellbore Spacing Unit  
Varra 3 Well: NWSW, Section 5, Township 6 North, Range 67 West  
Weld County, Colorado**

Dear Mr. Lepore:

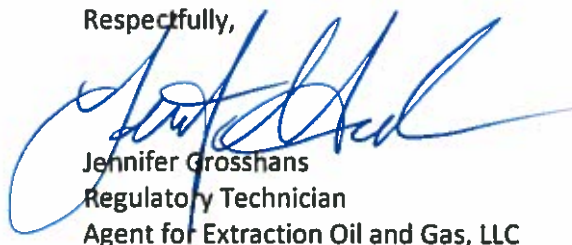
Extraction Oil and Gas, LLC (Extraction) is planning to drill the above referenced well in accordance with the provisions set out in COGCC Rule 318A.e. Extraction's proposed wellbore spacing unit consists of:

S½N½ and the N½S½ of Section 4, Township 6 North, Range 67 West  
S½N½ and the N½S½ of Section 5, Township 6 North, Range 67 West  
Containing 640 acres more or less

Extraction is not the only owner within the proposed wellbore spacing unit and has provided notice to the remaining owners within this spacing unit, as required by COGCC Rule 318A.e.(6). Copies of the required notification letters are on file at Extraction's office. The required thirty (30) day notice period has elapsed absent the receipt by Extraction of any objection to their proposal by the owners within the proposed spacing unit for the subject well.

Enclosed is the Proposed Spacing Unit Plat to assist in your review and approval of Extraction's proposed Application for Permit to Drill (APD) for the Varra 3 well. Many thanks for your attention to this matter.

Respectfully,



Jennifer Grosshans  
Regulatory Technician  
Agent for Extraction Oil and Gas, LLC

:jg

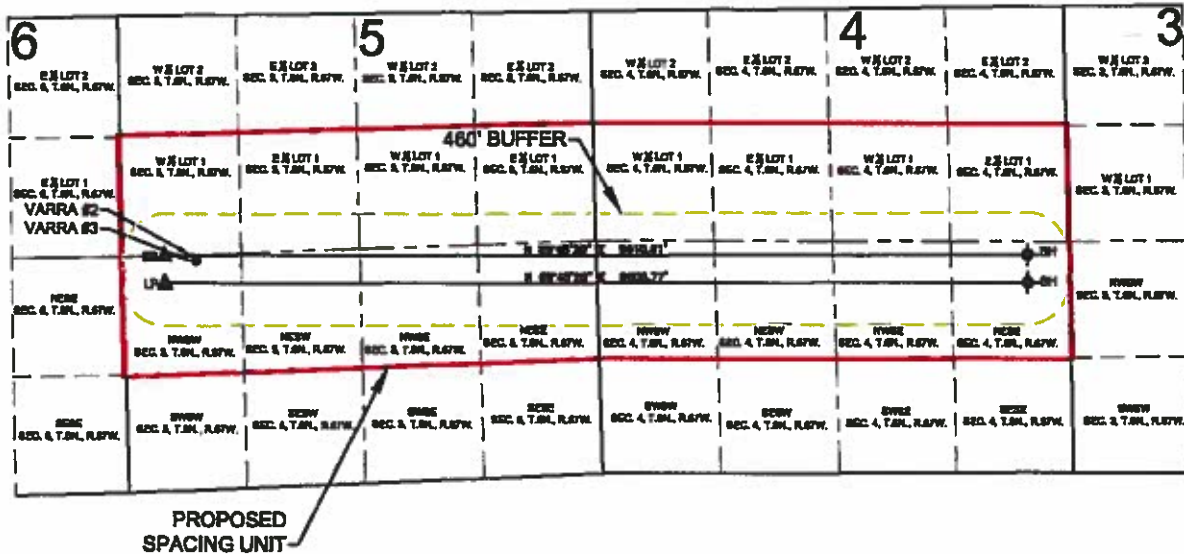
Enclosure: Proposed Spacing Unit Plat

*We are what we repeatedly do. Excellence, then, is not an act, but a habit.*

*-Aristotle*

# PROPOSED 318A.e. SPACING UNIT

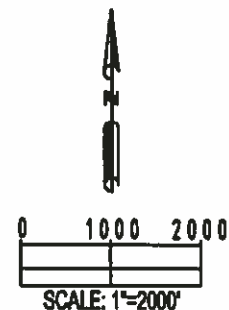
## SECTION 4 & 5, TOWNSHIP 6 NORTH, RANGE 67 WEST, 6TH P.M.



WELL NAME	SURFACE FOOTAGES		SURFACE LOCATION (NAD83)	LANDING POINT LOCATION (NAD83)	BOTTOM HOLE LOCATION (NAD83)
VARRA #2	1719' FSL	791' FWL	LATITUDE= 40.513298° LONGITUDE= 104.923578°	LATITUDE= 40.515702° LONGITUDE= 104.925129°	LATITUDE= 40.515538° LONGITUDE= 104.890552°
VARRA #3	1693' FSL	790' FWL	LATITUDE= 40.513223° LONGITUDE= 104.923578°	LATITUDE= 40.514689° LONGITUDE= 104.925108°	LATITUDE= 40.514795° LONGITUDE= 104.890549°

### LEGEND

- = PROPOSED WELL
- ▲ = LANDING POINT
- ◆ = BOTTOM HOLE
- LP = LANDING POINT
- BH = BOTTOM HOLE



SHEET 1 OF 5



PREPARED BY:  
FIELD DATE:  
03-31-14  
DRAWING DATE:  
05-23-14  
BY:  
KAD

CHECKED:  
SNC

SURFACE LOCATION:  
NW 1/4 SW 1/4,  
SEC. 5, T6N, R67W, 6TH P.M.  
WELD COUNTY, COLORADO