

EXTRACTION OIL & GAS

Location: COLORADO Slot: SLOT#03 VARRA #3(1693'FSL & 790'FWL,SEC.05)
Field: WELD COUNTY (NAD83/TRUE NORTH) Well: VARRA #3
Facility: SEC.05-T06N-R67W Wellbore: VARRA #3 PWB

Plot reference wellpath is VARRA #3 (REV-A.0) PWP

True vertical depths are referenced to RIG (RKB)	Grid System: NAD83 / Lambert Colorado SP, Northern Zone (501), US feet
Measured depths are referenced to RIG (RKB)	North Reference: True north
RIG (RKB) to Mean Sea Level: 4898 feet	Scale: True distance
Mean Sea Level to Mud line (At Slot: SLOT#03 VARRA #3(1693'FSL & 790'FWL,SEC.05)): 0 feet	Depths are in feet
Coordinates are in feet referenced to Slot	Created by: painsetr on 4/29/2014

Location Information

Facility Name				Grid East (US ft)	Grid North (US ft)	Latitude	Longitude
SEC.05-T06N-R67W				3160186.786	1430380.222	40°30'48.118"N	104°55'25.957"W
Slot	Local N (ft)	Local E (ft)	Grid East (US ft)	Grid North (US ft)	Latitude	Longitude	
SLOT#03 VARRA #3(1693'FSL & 790'FWL,SEC.05)	-52.12	-0.31	3160186.816	1430328.105	40°30'47.603"N	104°55'25.961"W	
RIG (RKB) to Mud line (At Slot: SLOT#03 VARRA #3(1693'FSL & 790'FWL,SEC.05))						4898ft	
Mean Sea Level to Mud line (At Slot: SLOT#03 VARRA #3(1693'FSL & 790'FWL,SEC.05))						0ft	
RIG (RKB) to Mean Sea Level						4898ft	

Targets

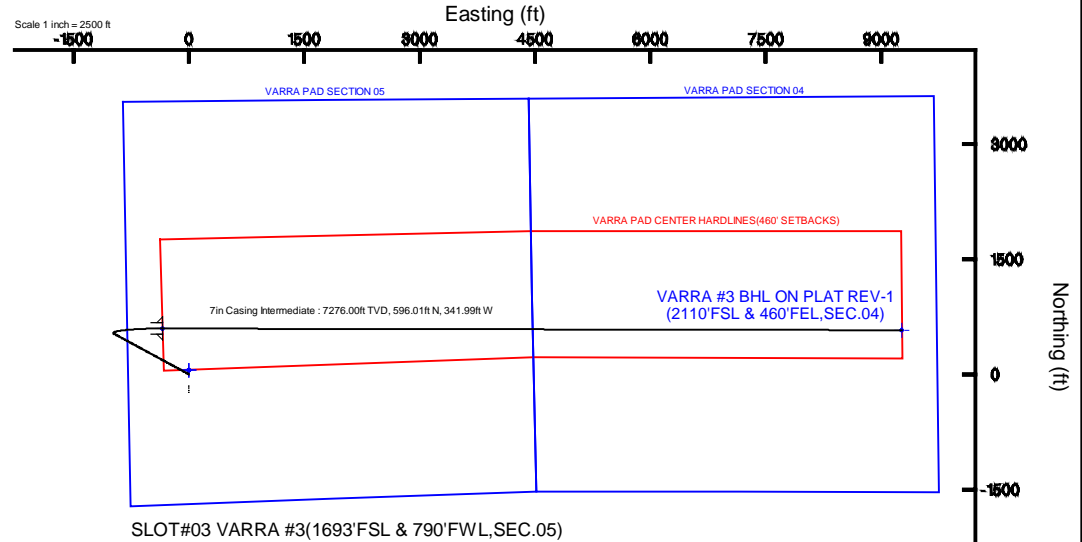
Name	MD (ft)	TVD (ft)	Local N (ft)	Local E (ft)	Grid East (US ft)	Grid North (US ft)	Latitude	Longitude
VARRA PAD SECTION 04		0.00	52.08	0.29	3160186.77	1430380.18	40°30'48.118"N	104°55'25.957"W
VARRA PAD SECTION 05		0.00	52.08	0.29	3160186.77	1430380.18	40°30'48.118"N	104°55'25.957"W
VARRA #3 BHL ON PLAT REV-1(2110'FSL & 460'FEL,SEC.04)	17361.07	7276.00	574.43	9267.09	3169449.66	1430962.71	40°30'53.262"N	104°53'25.976"W
VARRA #3 LANDING POINT	7751.97	7276.00	596.01	-341.98	3159840.88	1430921.86	40°30'53.492"N	104°55'30.389"W
VARRA PAD CENTER HARDLINES(460' SETBACKS)		7420.00	52.08	0.29	3160186.77	1430380.18	40°30'48.118"N	104°55'25.957"W

Survey Program

Start MD (ft)	End MD (ft)	Tool	Model	Log Name/Comment	Wellbore
24.00	18000.00	NaviTrak	NaviTrak (Standard)		VARRA #3 PWB

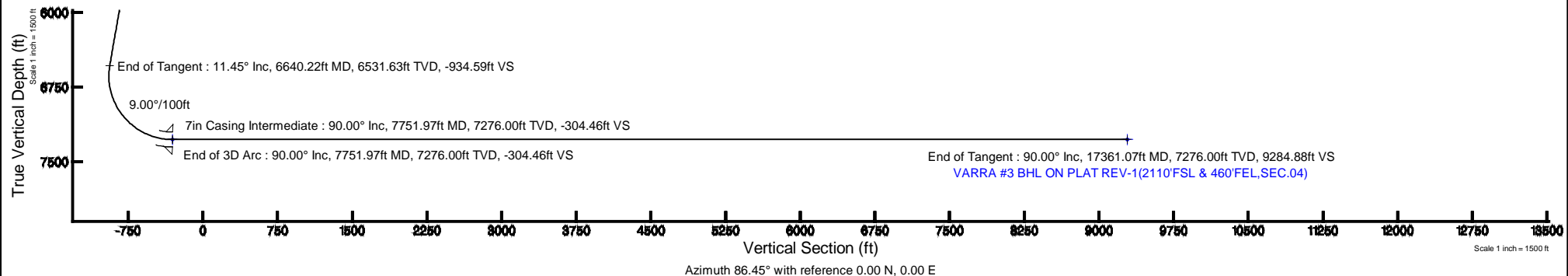
Well Profile Data

Design Comment	MD (ft)	Inc (°)	Az (°)	TVD (ft)	Local N (ft)	Local E (ft)	DLS (°/100ft)	VS (ft)
Tie On	24.00	0.000	298.487	24.00	0.00	0.00	0.00	0.00
End of Tangent	800.00	0.000	298.487	800.00	0.00	0.00	0.00	0.00
End of Build	1372.35	11.447	298.487	1368.55	27.18	-50.09	2.00	-48.31
End of Tangent	6640.22	11.447	298.487	6531.63	525.82	-968.98	0.00	-934.59
End of 3D Arc	7751.97	90.000	90.129	7276.00	596.01	-341.98	9.00	-304.46
End of Tangent	17361.07	90.000	90.129	7276.00	574.43	9267.09	0.00	9284.88



BGGM (1945.0 to 2015.0) Dip: 67.00° Field: 52835.3 nT
Magnetic North is 8.62 degrees East of True North (at 4/17/2014)

To correct azimuth from Magnetic to True add 8.62 degrees





Planned Wellpath Report

VARRA #3 (REV-A.0) PWP

Page 1 of 8



REFERENCE WELLPATH IDENTIFICATION

Operator	EXTRACTION OIL & GAS	Slot	SLOT#03 VARRA #3(1693'FSL & 790'FWL,SEC.05)
Area	COLORADO	Well	VARRA #3
Field	WELD COUNTY (NAD83/TRUE NORTH)	Wellbore	VARRA #3 PWB
Facility	SEC.05-T06N-R67W		

REPORT SETUP INFORMATION

Projection System	NAD83 / Lambert Colorado SP, Northern Zone (501), US feet	Software System	WellArchitect® 4.0.0
North Reference	True	User	Painsetr
Scale	0.999967	Report Generated	4/29/2014 at 1:40:41 PM
Convergence at slot	n/a	Database/Source file	WA_Denver/VARRA_#3_PWB.xml

WELLPATH LOCATION

	Local coordinates		Grid coordinates		Geographic coordinates	
	North[ft]	East[ft]	Easting[US ft]	Northing[US ft]	Latitude	Longitude
Slot Location	-52.12	-0.31	3160186.82	1430328.11	40°30'47.603"N	104°55'25.961"W
Facility Reference Pt			3160186.79	1430380.22	40°30'48.118"N	104°55'25.957"W
Field Reference Pt			3185481.27	1419166.81	40°28'55.560"N	104°49'59.556"W

WELLPATH DATUM

Calculation method	Minimum curvature	RIG (RKB) to Facility Vertical Datum	4898.00ft
Horizontal Reference Pt	Slot	RIG (RKB) to Mean Sea Level	4898.00ft
Vertical Reference Pt	RIG (RKB)	RIG (RKB) to Mud Line at Slot (SLOT#03 VARRA #3(1693'FSL & 790'FWL,SEC.05))	4898.00ft
MD Reference Pt	RIG (RKB)	Section Origin	N 0.00, E 0.00 ft
Field Vertical Reference	Mean Sea Level	Section Azimuth	86.45°



Planned Wellpath Report

VARRA #3 (REV-A.0) PWP

Page 2 of 8



REFERENCE WELLPATH IDENTIFICATION

Operator	EXTRACTION OIL & GAS	Slot	SLOT#03 VARRA #3(1693'FSL & 790'FWL,SEC.05)
Area	COLORADO	Well	VARRA #3
Field	WELD COUNTY (NAD83/TRUE NORTH)	Wellbore	VARRA #3 PWB
Facility	SEC.05-T06N-R67W		

WELLPATH DATA (180 stations) † = interpolated/extrapolated station

MD [ft]	Inclination [°]	Azimuth [°]	TVD [ft]	Vert Sect [ft]	North [ft]	East [ft]	DLS [°/100ft]	Comments
0.00†	0.000	298.487	0.00	0.00	0.00	0.00	0.00	
24.00	0.000	298.487	24.00	0.00	0.00	0.00	0.00	Tie On
124.00†	0.000	298.487	124.00	0.00	0.00	0.00	0.00	
224.00†	0.000	298.487	224.00	0.00	0.00	0.00	0.00	
324.00†	0.000	298.487	324.00	0.00	0.00	0.00	0.00	
424.00†	0.000	298.487	424.00	0.00	0.00	0.00	0.00	
524.00†	0.000	298.487	524.00	0.00	0.00	0.00	0.00	
624.00†	0.000	298.487	624.00	0.00	0.00	0.00	0.00	
724.00†	0.000	298.487	724.00	0.00	0.00	0.00	0.00	
800.00	0.000	298.487	800.00	0.00	0.00	0.00	0.00	End of Tangent
824.00†	0.480	298.487	824.00	-0.09	0.05	-0.09	2.00	
924.00†	2.480	298.487	923.96	-2.27	1.28	-2.36	2.00	
1024.00†	4.480	298.487	1023.77	-7.42	4.17	-7.69	2.00	
1124.00†	6.480	298.487	1123.31	-15.52	8.73	-16.09	2.00	
1224.00†	8.480	298.487	1222.45	-26.55	14.94	-27.53	2.00	
1324.00†	10.480	298.487	1321.08	-40.51	22.79	-42.00	2.00	
1372.35	11.447	298.487	1368.55	-48.31	27.18	-50.09	2.00	End of Build
1424.00†	11.447	298.487	1419.17	-57.00	32.07	-59.09	0.00	
1524.00†	11.447	298.487	1517.18	-73.82	41.53	-76.54	0.00	
1624.00†	11.447	298.487	1615.19	-90.65	51.00	-93.98	0.00	
1724.00†	11.447	298.487	1713.21	-107.47	60.47	-111.42	0.00	
1824.00†	11.447	298.487	1811.22	-124.29	69.93	-128.87	0.00	
1924.00†	11.447	298.487	1909.23	-141.12	79.40	-146.31	0.00	
2024.00†	11.447	298.487	2007.24	-157.94	88.86	-163.75	0.00	
2124.00†	11.447	298.487	2105.25	-174.77	98.33	-181.20	0.00	
2224.00†	11.447	298.487	2203.26	-191.59	107.79	-198.64	0.00	
2324.00†	11.447	298.487	2301.27	-208.42	117.26	-216.08	0.00	
2424.00†	11.447	298.487	2399.28	-225.24	126.73	-233.53	0.00	
2524.00†	11.447	298.487	2497.29	-242.07	136.19	-250.97	0.00	
2624.00†	11.447	298.487	2595.30	-258.89	145.66	-268.42	0.00	



Planned Wellpath Report

VARRA #3 (REV-A.0) PWP

Page 3 of 8



REFERENCE WELLPATH IDENTIFICATION

Operator	EXTRACTION OIL & GAS	Slot	SLOT#03 VARRA #3(1693'FSL & 790'FWL,SEC.05)
Area	COLORADO	Well	VARRA #3
Field	WELD COUNTY (NAD83/TRUE NORTH)	Wellbore	VARRA #3 PWB
Facility	SEC.05-T06N-R67W		

WELLPATH DATA (180 stations) † = interpolated/extrapolated station

MD [ft]	Inclination [°]	Azimuth [°]	TVD [ft]	Vert Sect [ft]	North [ft]	East [ft]	DLS [°/100ft]	Comments
2724.00†	11.447	298.487	2693.31	-275.71	155.12	-285.86	0.00	
2824.00†	11.447	298.487	2791.32	-292.54	164.59	-303.30	0.00	
2924.00†	11.447	298.487	2889.34	-309.36	174.05	-320.75	0.00	
3024.00†	11.447	298.487	2987.35	-326.19	183.52	-338.19	0.00	
3124.00†	11.447	298.487	3085.36	-343.01	192.99	-355.63	0.00	
3224.00†	11.447	298.487	3183.37	-359.84	202.45	-373.08	0.00	
3324.00†	11.447	298.487	3281.38	-376.66	211.92	-390.52	0.00	
3424.00†	11.447	298.487	3379.39	-393.48	221.38	-407.96	0.00	
3524.00†	11.447	298.487	3477.40	-410.31	230.85	-425.41	0.00	
3624.00†	11.447	298.487	3575.41	-427.13	240.32	-442.85	0.00	
3724.00†	11.447	298.487	3673.42	-443.96	249.78	-460.29	0.00	
3824.00†	11.447	298.487	3771.43	-460.78	259.25	-477.74	0.00	
3924.00†	11.447	298.487	3869.44	-477.61	268.71	-495.18	0.00	
4024.00†	11.447	298.487	3967.45	-494.43	278.18	-512.62	0.00	
4124.00†	11.447	298.487	4065.47	-511.25	287.64	-530.07	0.00	
4224.00†	11.447	298.487	4163.48	-528.08	297.11	-547.51	0.00	
4324.00†	11.447	298.487	4261.49	-544.90	306.58	-564.95	0.00	
4424.00†	11.447	298.487	4359.50	-561.73	316.04	-582.40	0.00	
4524.00†	11.447	298.487	4457.51	-578.55	325.51	-599.84	0.00	
4624.00†	11.447	298.487	4555.52	-595.38	334.97	-617.28	0.00	
4724.00†	11.447	298.487	4653.53	-612.20	344.44	-634.73	0.00	
4824.00†	11.447	298.487	4751.54	-629.02	353.90	-652.17	0.00	
4924.00†	11.447	298.487	4849.55	-645.85	363.37	-669.61	0.00	
5024.00†	11.447	298.487	4947.56	-662.67	372.84	-687.06	0.00	
5124.00†	11.447	298.487	5045.57	-679.50	382.30	-704.50	0.00	
5224.00†	11.447	298.487	5143.59	-696.32	391.77	-721.94	0.00	
5324.00†	11.447	298.487	5241.60	-713.15	401.23	-739.39	0.00	
5424.00†	11.447	298.487	5339.61	-729.97	410.70	-756.83	0.00	
5524.00†	11.447	298.487	5437.62	-746.79	420.17	-774.27	0.00	
5624.00†	11.447	298.487	5535.63	-763.62	429.63	-791.72	0.00	



Planned Wellpath Report

VARRA #3 (REV-A.0) PWP

Page 4 of 8



REFERENCE WELLPATH IDENTIFICATION

Operator	EXTRACTION OIL & GAS	Slot	SLOT#03 VARRA #3(1693'FSL & 790'FWL,SEC.05)
Area	COLORADO	Well	VARRA #3
Field	WELD COUNTY (NAD83/TRUE NORTH)	Wellbore	VARRA #3 PWB
Facility	SEC.05-T06N-R67W		

WELLPATH DATA (180 stations) † = interpolated/extrapolated station

MD [ft]	Inclination [°]	Azimuth [°]	TVD [ft]	Vert Sect [ft]	North [ft]	East [ft]	DLS [°/100ft]	Comments
5724.00†	11.447	298.487	5633.64	-780.44	439.10	-809.16	0.00	
5824.00†	11.447	298.487	5731.65	-797.27	448.56	-826.60	0.00	
5924.00†	11.447	298.487	5829.66	-814.09	458.03	-844.05	0.00	
6024.00†	11.447	298.487	5927.67	-830.92	467.49	-861.49	0.00	
6124.00†	11.447	298.487	6025.68	-847.74	476.96	-878.93	0.00	
6224.00†	11.447	298.487	6123.69	-864.57	486.43	-896.38	0.00	
6324.00†	11.447	298.487	6221.70	-881.39	495.89	-913.82	0.00	
6424.00†	11.447	298.487	6319.72	-898.21	505.36	-931.26	0.00	
6524.00†	11.447	298.487	6417.73	-915.04	514.82	-948.71	0.00	
6624.00†	11.447	298.487	6515.74	-931.86	524.29	-966.15	0.00	
6640.22	11.447	298.487	6531.63	-934.59	525.82	-968.98	0.00	End of Tangent
6724.00†	6.042	335.461	6614.47	-943.23	533.81	-978.13	9.00	
6824.00†	8.490	50.012	6713.85	-939.17	543.36	-974.65	9.00	
6924.00†	16.406	71.062	6811.46	-919.58	552.71	-955.60	9.00	
7024.00†	25.054	78.255	6904.92	-884.93	561.62	-921.44	9.00	
7124.00†	33.878	81.893	6991.90	-836.09	569.88	-873.02	9.00	
7224.00†	42.769	84.160	7070.28	-774.26	577.28	-811.52	9.00	
7324.00†	51.692	85.771	7138.12	-700.95	583.64	-738.47	9.00	
7424.00†	60.631	87.026	7193.75	-617.97	588.80	-655.66	9.00	
7524.00†	69.581	88.077	7235.80	-527.38	592.64	-565.12	9.00	
7624.00†	78.536	89.011	7263.24	-431.39	595.07	-469.10	9.00	
7724.00†	87.494	89.887	7275.39	-332.37	596.01	-369.95	9.00	
7751.97	90.000	90.129	7276.00 ¹	-304.46	596.01	-341.98	9.00	End of 3D Arc
7824.00†	90.000	90.129	7276.00	-232.58	595.85	-269.96	0.00	
7924.00†	90.000	90.129	7276.00	-132.78	595.62	-169.96	0.00	
8024.00†	90.000	90.129	7276.00	-32.99	595.40	-69.96	0.00	
8124.00†	90.000	90.129	7276.00	66.81	595.17	30.04	0.00	
8224.00†	90.000	90.129	7276.00	166.60	594.95	130.04	0.00	
8324.00†	90.000	90.129	7276.00	266.39	594.72	230.04	0.00	
8424.00†	90.000	90.129	7276.00	366.19	594.50	330.04	0.00	



Planned Wellpath Report

VARRA #3 (REV-A.0) PWP

Page 5 of 8



REFERENCE WELLPATH IDENTIFICATION

Operator	EXTRACTION OIL & GAS	Slot	SLOT#03 VARRA #3(1693'FSL & 790'FWL,SEC.05)
Area	COLORADO	Well	VARRA #3
Field	WELD COUNTY (NAD83/TRUE NORTH)	Wellbore	VARRA #3 PWB
Facility	SEC.05-T06N-R67W		

WELLPATH DATA (180 stations) † = interpolated/extrapolated station

MD [ft]	Inclination [°]	Azimuth [°]	TVD [ft]	Vert Sect [ft]	North [ft]	East [ft]	DLS [°/100ft]	Comments
8524.00†	90.000	90.129	7276.00	465.98	594.27	430.04	0.00	
8624.00†	90.000	90.129	7276.00	565.78	594.05	530.04	0.00	
8724.00†	90.000	90.129	7276.00	665.57	593.83	630.04	0.00	
8824.00†	90.000	90.129	7276.00	765.37	593.60	730.04	0.00	
8924.00†	90.000	90.129	7276.00	865.16	593.38	830.04	0.00	
9024.00†	90.000	90.129	7276.00	964.95	593.15	930.04	0.00	
9124.00†	90.000	90.129	7276.00	1064.75	592.93	1030.04	0.00	
9224.00†	90.000	90.129	7276.00	1164.54	592.70	1130.04	0.00	
9324.00†	90.000	90.129	7276.00	1264.34	592.48	1230.04	0.00	
9424.00†	90.000	90.129	7276.00	1364.13	592.25	1330.04	0.00	
9524.00†	90.000	90.129	7276.00	1463.93	592.03	1430.04	0.00	
9624.00†	90.000	90.129	7276.00	1563.72	591.80	1530.04	0.00	
9724.00†	90.000	90.129	7276.00	1663.51	591.58	1630.04	0.00	
9824.00†	90.000	90.129	7276.00	1763.31	591.36	1730.04	0.00	
9924.00†	90.000	90.129	7276.00	1863.10	591.13	1830.04	0.00	
10024.00†	90.000	90.129	7276.00	1962.90	590.91	1930.04	0.00	
10124.00†	90.000	90.129	7276.00	2062.69	590.68	2030.04	0.00	
10224.00†	90.000	90.129	7276.00	2162.49	590.46	2130.04	0.00	
10324.00†	90.000	90.129	7276.00	2262.28	590.23	2230.04	0.00	
10424.00†	90.000	90.129	7276.00	2362.07	590.01	2330.04	0.00	
10524.00†	90.000	90.129	7276.00	2461.87	589.78	2430.04	0.00	
10624.00†	90.000	90.129	7276.00	2561.66	589.56	2530.04	0.00	
10724.00†	90.000	90.129	7276.00	2661.46	589.33	2630.04	0.00	
10824.00†	90.000	90.129	7276.00	2761.25	589.11	2730.03	0.00	
10924.00†	90.000	90.129	7276.00	2861.05	588.89	2830.03	0.00	
11024.00†	90.000	90.129	7276.00	2960.84	588.66	2930.03	0.00	
11124.00†	90.000	90.129	7276.00	3060.63	588.44	3030.03	0.00	
11224.00†	90.000	90.129	7276.00	3160.43	588.21	3130.03	0.00	
11324.00†	90.000	90.129	7276.00	3260.22	587.99	3230.03	0.00	
11424.00†	90.000	90.129	7276.00	3360.02	587.76	3330.03	0.00	



Planned Wellpath Report

VARRA #3 (REV-A.0) PWP

Page 6 of 8



REFERENCE WELLPATH IDENTIFICATION

Operator	EXTRACTION OIL & GAS	Slot	SLOT#03 VARRA #3(1693'FSL & 790'FWL,SEC.05)
Area	COLORADO	Well	VARRA #3
Field	WELD COUNTY (NAD83/TRUE NORTH)	Wellbore	VARRA #3 PWB
Facility	SEC.05-T06N-R67W		

WELLPATH DATA (180 stations) † = interpolated/extrapolated station

MD [ft]	Inclination [°]	Azimuth [°]	TVD [ft]	Vert Sect [ft]	North [ft]	East [ft]	DLS [°/100ft]	Comments
11524.00†	90.000	90.129	7276.00	3459.81	587.54	3430.03	0.00	
11624.00†	90.000	90.129	7276.00	3559.61	587.31	3530.03	0.00	
11724.00†	90.000	90.129	7276.00	3659.40	587.09	3630.03	0.00	
11824.00†	90.000	90.129	7276.00	3759.19	586.86	3730.03	0.00	
11924.00†	90.000	90.129	7276.00	3858.99	586.64	3830.03	0.00	
12024.00†	90.000	90.129	7276.00	3958.78	586.42	3930.03	0.00	
12124.00†	90.000	90.129	7276.00	4058.58	586.19	4030.03	0.00	
12224.00†	90.000	90.129	7276.00	4158.37	585.97	4130.03	0.00	
12324.00†	90.000	90.129	7276.00	4258.17	585.74	4230.03	0.00	
12424.00†	90.000	90.129	7276.00	4357.96	585.52	4330.03	0.00	
12524.00†	90.000	90.129	7276.00	4457.75	585.29	4430.03	0.00	
12624.00†	90.000	90.129	7276.00	4557.55	585.07	4530.03	0.00	
12724.00†	90.000	90.129	7276.00	4657.34	584.84	4630.03	0.00	
12824.00†	90.000	90.129	7276.00	4757.14	584.62	4730.03	0.00	
12924.00†	90.000	90.129	7276.00	4856.93	584.39	4830.03	0.00	
13024.00†	90.000	90.129	7276.00	4956.73	584.17	4930.03	0.00	
13124.00†	90.000	90.129	7276.00	5056.52	583.95	5030.03	0.00	
13224.00†	90.000	90.129	7276.00	5156.31	583.72	5130.03	0.00	
13324.00†	90.000	90.129	7276.00	5256.11	583.50	5230.03	0.00	
13424.00†	90.000	90.129	7276.00	5355.90	583.27	5330.03	0.00	
13524.00†	90.000	90.129	7276.00	5455.70	583.05	5430.03	0.00	
13624.00†	90.000	90.129	7276.00	5555.49	582.82	5530.03	0.00	
13724.00†	90.000	90.129	7276.00	5655.29	582.60	5630.03	0.00	
13824.00†	90.000	90.129	7276.00	5755.08	582.37	5730.03	0.00	
13924.00†	90.000	90.129	7276.00	5854.87	582.15	5830.03	0.00	
14024.00†	90.000	90.129	7276.00	5954.67	581.92	5930.03	0.00	
14124.00†	90.000	90.129	7276.00	6054.46	581.70	6030.03	0.00	
14224.00†	90.000	90.129	7276.00	6154.26	581.48	6130.03	0.00	
14324.00†	90.000	90.129	7276.00	6254.05	581.25	6230.03	0.00	
14424.00†	90.000	90.129	7276.00	6353.85	581.03	6330.03	0.00	



Planned Wellpath Report

VARRA #3 (REV-A.0) PWP

Page 7 of 8



REFERENCE WELLPATH IDENTIFICATION

Operator	EXTRACTION OIL & GAS	Slot	SLOT#03 VARRA #3(1693'FSL & 790'FWL,SEC.05)
Area	COLORADO	Well	VARRA #3
Field	WELD COUNTY (NAD83/TRUE NORTH)	Wellbore	VARRA #3 PWB
Facility	SEC.05-T06N-R67W		

WELLPATH DATA (180 stations) † = interpolated/extrapolated station

MD [ft]	Inclination [°]	Azimuth [°]	TVD [ft]	Vert Sect [ft]	North [ft]	East [ft]	DLS [°/100ft]	Comments
14524.00†	90.000	90.129	7276.00	6453.64	580.80	6430.03	0.00	
14624.00†	90.000	90.129	7276.00	6553.43	580.58	6530.03	0.00	
14724.00†	90.000	90.129	7276.00	6653.23	580.35	6630.02	0.00	
14824.00†	90.000	90.129	7276.00	6753.02	580.13	6730.02	0.00	
14924.00†	90.000	90.129	7276.00	6852.82	579.90	6830.02	0.00	
15024.00†	90.000	90.129	7276.00	6952.61	579.68	6930.02	0.00	
15124.00†	90.000	90.129	7276.00	7052.41	579.45	7030.02	0.00	
15224.00†	90.000	90.129	7276.00	7152.20	579.23	7130.02	0.00	
15324.00†	90.000	90.129	7276.00	7252.00	579.01	7230.02	0.00	
15424.00†	90.000	90.129	7276.00	7351.79	578.78	7330.02	0.00	
15524.00†	90.000	90.129	7276.00	7451.58	578.56	7430.02	0.00	
15624.00†	90.000	90.129	7276.00	7551.38	578.33	7530.02	0.00	
15724.00†	90.000	90.129	7276.00	7651.17	578.11	7630.02	0.00	
15824.00†	90.000	90.129	7276.00	7750.97	577.88	7730.02	0.00	
15924.00†	90.000	90.129	7276.00	7850.76	577.66	7830.02	0.00	
16024.00†	90.000	90.129	7276.00	7950.56	577.43	7930.02	0.00	
16124.00†	90.000	90.129	7276.00	8050.35	577.21	8030.02	0.00	
16224.00†	90.000	90.129	7276.00	8150.14	576.98	8130.02	0.00	
16324.00†	90.000	90.129	7276.00	8249.94	576.76	8230.02	0.00	
16424.00†	90.000	90.129	7276.00	8349.73	576.54	8330.02	0.00	
16524.00†	90.000	90.129	7276.00	8449.53	576.31	8430.02	0.00	
16624.00†	90.000	90.129	7276.00	8549.32	576.09	8530.02	0.00	
16724.00†	90.000	90.129	7276.00	8649.12	575.86	8630.02	0.00	
16824.00†	90.000	90.129	7276.00	8748.91	575.64	8730.02	0.00	
16924.00†	90.000	90.129	7276.00	8848.70	575.41	8830.02	0.00	
17024.00†	90.000	90.129	7276.00	8948.50	575.19	8930.02	0.00	
17124.00†	90.000	90.129	7276.00	9048.29	574.96	9030.02	0.00	
17224.00†	90.000	90.129	7276.00	9148.09	574.74	9130.02	0.00	
17324.00†	90.000	90.129	7276.00	9247.88	574.51	9230.02	0.00	
17361.07	90.000	90.129	7276.00 ²	9284.88	574.43	9267.09	0.00	End of Tangent



Planned Wellpath Report

VARRA #3 (REV-A.0) PWP

Page 8 of 8



REFERENCE WELLPATH IDENTIFICATION

Operator	EXTRACTION OIL & GAS	Slot	SLOT#03 VARRA #3(1693'FSL & 790'FWL,SEC.05)
Area	COLORADO	Well	VARRA #3
Field	WELD COUNTY (NAD83/TRUE NORTH)	Wellbore	VARRA #3 PWB
Facility	SEC.05-T06N-R67W		

HOLE & CASING SECTIONS - Ref Wellbore: VARRA #3 PWB Ref Wellpath: VARRA #3 (REV-A.0) PWP

String/Diameter	Start MD [ft]	End MD [ft]	Interval [ft]	Start TVD [ft]	End TVD [ft]	Start N/S [ft]	Start E/W [ft]	End N/S [ft]	End E/W [ft]
7in Casing Intermediate	24.00	7751.97	7727.97	24.00	7276.00	0.00	0.00	596.01	-341.99

TARGETS

Name	MD [ft]	TVD [ft]	North [ft]	East [ft]	Grid East [US ft]	Grid North [US ft]	Latitude	Longitude	Shape
VARRA PAD SECTION 04		0.00	52.08	0.29	3160186.77	1430380.18	40°30'48.118"N	104°55'25.957"W	polygon
VARRA PAD SECTION 05		0.00	52.08	0.29	3160186.77	1430380.18	40°30'48.118"N	104°55'25.957"W	polygon
2) VARRA #3 BHL ON PLAT REV-1(2110'FSL & 460'FEL,SEC.04)	17361.07	7276.00	574.43	9267.09	3169449.66	1430962.71	40°30'53.262"N	104°53'25.976"W	point
1) VARRA #3 LANDING POINT	7751.97	7276.00	596.01	-341.98	3159840.98	1430921.86	40°30'53.492"N	104°55'30.389"W	point
VARRA PAD CENTER HARDLINES(460' SETBACKS)		7420.00	52.08	0.29	3160186.77	1430380.18	40°30'48.118"N	104°55'25.957"W	polygon

SURVEY PROGRAM - Ref Wellbore: VARRA #3 PWB Ref Wellpath: VARRA #3 (REV-A.0) PWP

Start MD [ft]	End MD [ft]	Positional Uncertainty Model	Log Name/Comment	Wellbore
24.00	18000.00	NaviTrak (Standard)		VARRA #3 PWB