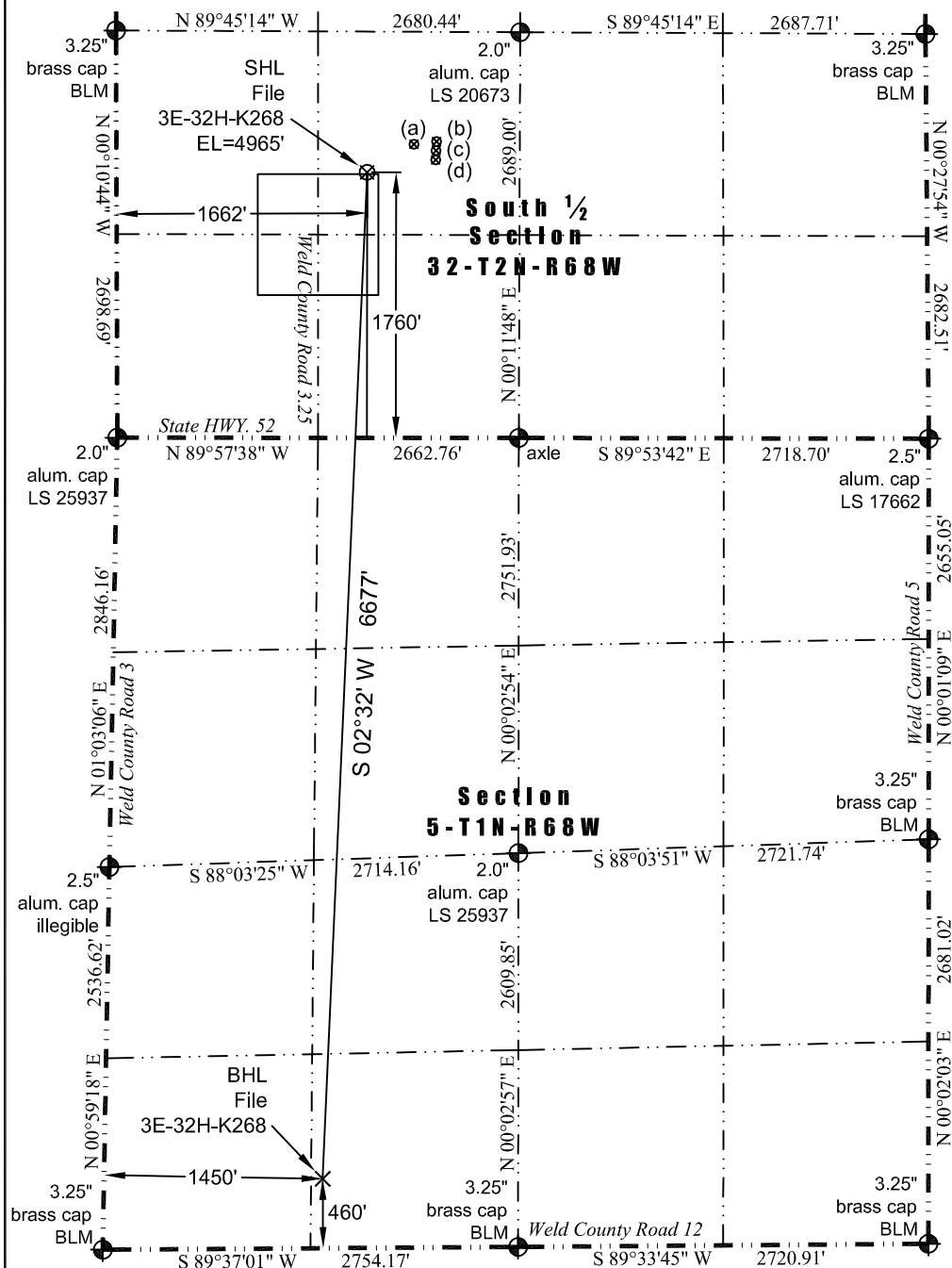




WELL LOCATION CERTIFICATE

THIS MAP DOES NOT REPRESENT A BOUNDARY SURVEY

Washburn Land Surveying
www.WashburnSurveying.com
970-232-9645



(a) Existing Well Data:
Nelson #4
Latitude: N 40.093080°
Longitude: W 105.029854°
FSL: 1946'
FWL: 1974'
ELEV: 4957'
PDOP: 2.0

(b) Existing Well Data:
Ray Nelson 4-4-32
Latitude: N 40.093078°
Longitude: W 105.029319°
FSL: 1946'
FWL: 2123'
ELEV: 4958'
PDOP: 2.4

(c) Existing Well Data:
Ray Nelson 4-6-32
Latitude: N 40.093038°
Longitude: W 105.029320°
FSL: 1931'
FWL: 2123'
ELEV: 4958'
PDOP: 2.4

(d) Existing Well Data:
Ray Nelson 23-32
Latitude: N 40.092998°
Longitude: W 105.029321°
FSL: 1946'
FWL: 2123'
ELEV: 4958'
PDOP: 2.1

Proposed Surface Hole Data:
Latitude: N 40.092575° (BHL: 40.074266°)
Longitude: W 105.030968° (BHL: 105.032147°)
PDOP: 1.2

Nearest:
Building: 524' southwest
Building Unit: 519' southwest
Above Ground Utility: 319' west
Public Road: 340' west
Railroad: +5,280'
Property Line: 325' west
Well Window: SHL is 13' outside
Existing Well: Nelson #4; 362' northeast
High Occupancy Building Unit: +5,280'

In accordance with a request from Jay Knutson of EnCana Oil & Gas (USA) Inc., Washburn Land Surveying, LLC has determined the location of the **File 3E-32H-K268** well site to be SHL: 1760' FSL and 1662' FWL, (BHL: 460' FSL and 1450' FWL), as measured at ninety (90) degrees from the section lines of Section 32, Township 2 North and Section 5, Township 1 North, Range 68 West of the 6th Principal Meridian, Weld County Colorado.

Notes:

- 1) Bearings and distances based on NAD 83 Colorado North State Plane Coordinate, using RTK GPS observations taken 5/29/14 by operator Chris Bettencourt.
- 2) Conversion factor to ground (1.0002793972).
- 3) Elevations based on NAVD 88 GPS heights and Geoid 2009 corrections.
- 4) See Location Drawing for visible improvements within 500 feet of Pad Site.
- 5) The surface use is a cultivated field.

NOTICE: According to Colorado law you must commence any legal action based upon any defect in this W.L.C. within three years after you first discover such defect. In no event may any action based upon any defect in this W.L.C. be commenced more than ten years from this said date of the certification shown hereon.

I hereby certify that this Well Location Certificate was prepared by me or under my direct supervision on 6/2/2014 for and on behalf of EnCana Oil & Gas (USA) Inc. That it is not a Land Survey Plat or an Improvement Survey Plat and that it is not to be relied upon for establishment of fences, buildings, or other future improvement lines.

John Robert McGehee, L.S.#38249
Well: File 3E-32H-K268 WLC