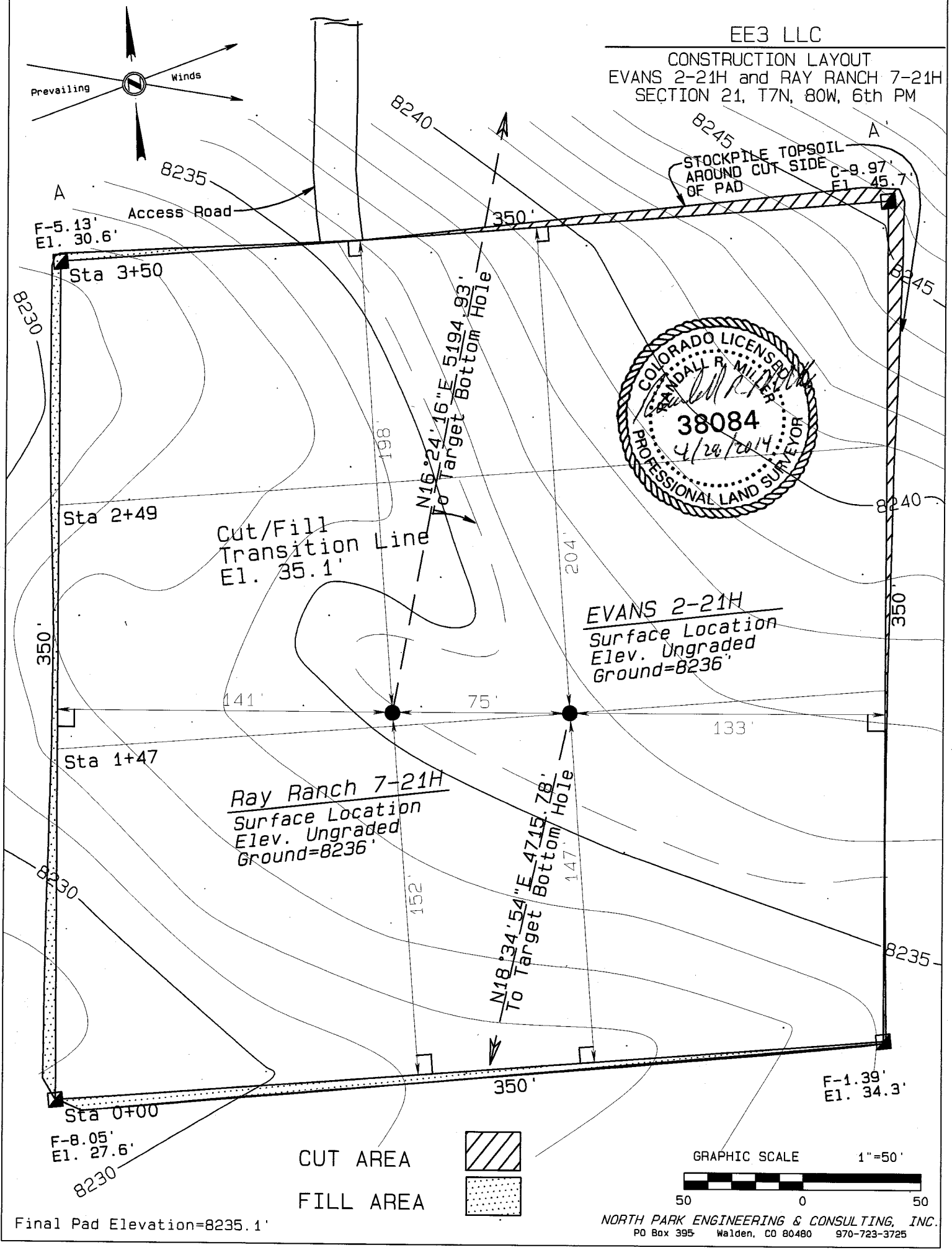
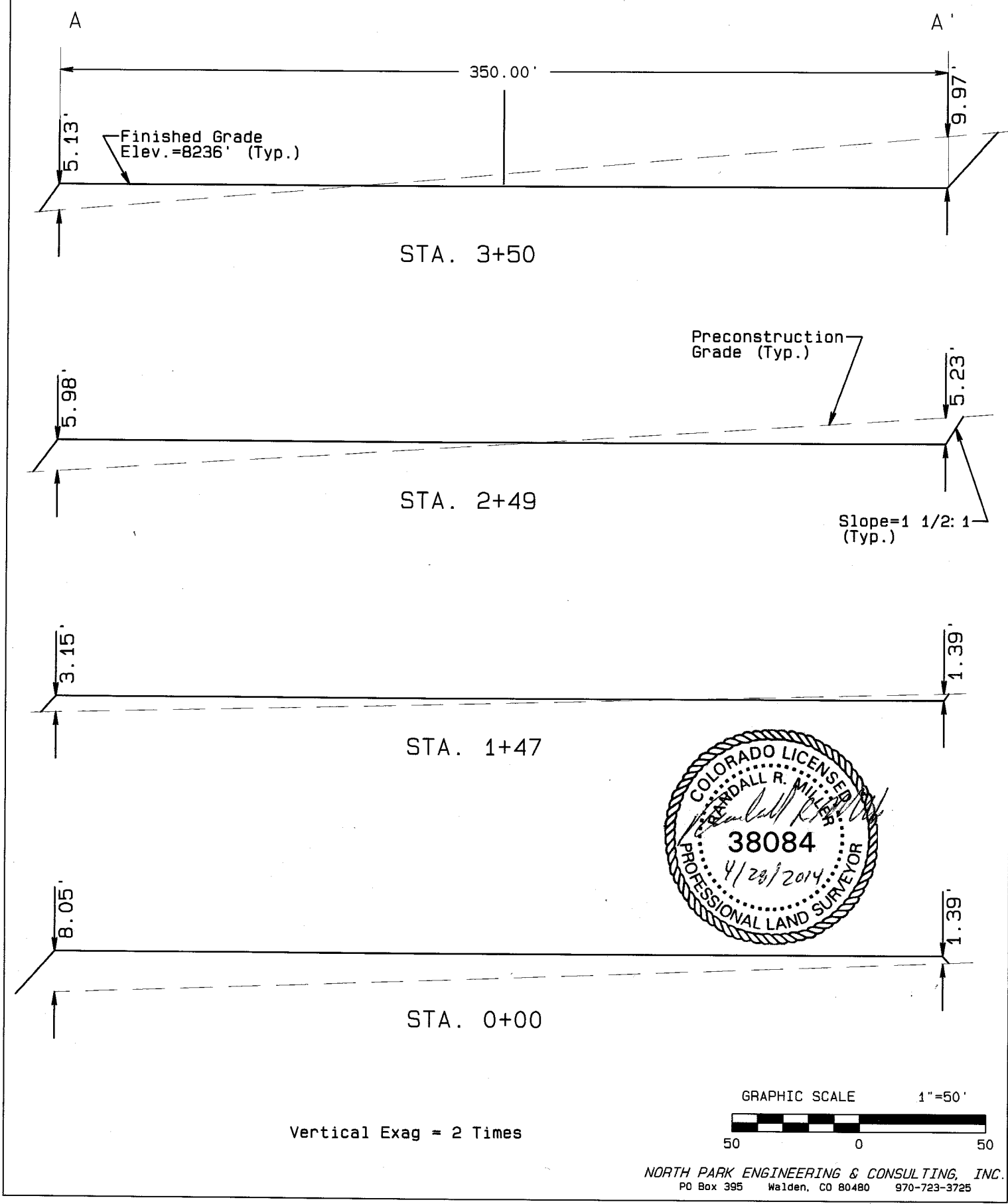


EE3 LLC

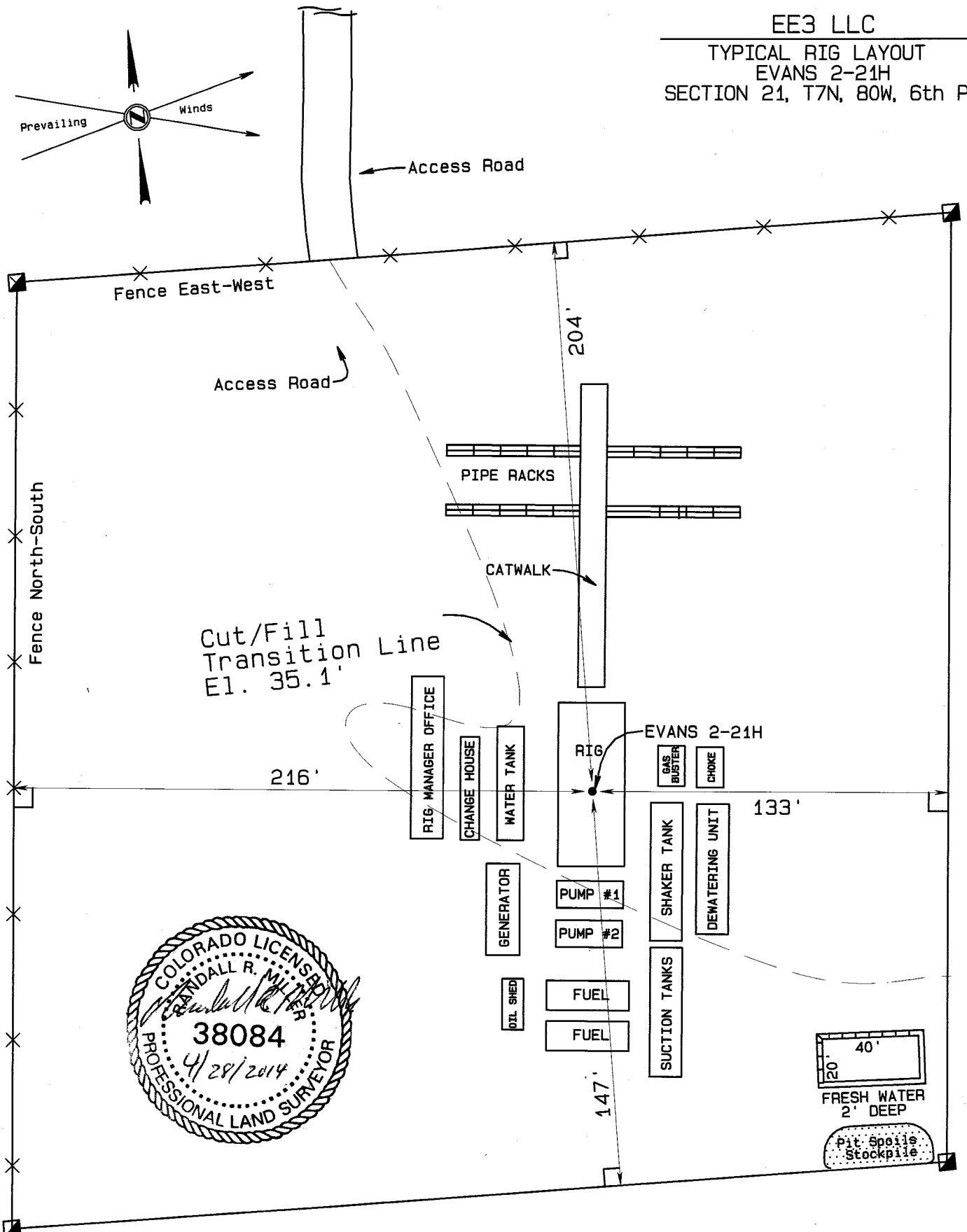
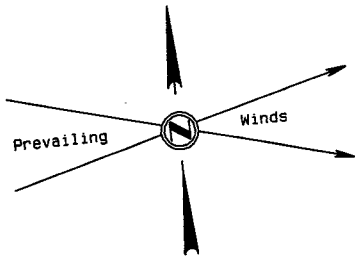
CONSTRUCTION LAYOUT
EVANS 2-21H and RAY RANCH 7-21H
SECTION 21, T7N, 80W, 6th PM



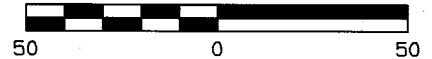
EE3 LLC
 CONSTRUCTION LAYOUT CROSS SECTION
 EVANS 2-21H and RAY RANCH 7-21H
 SECTION 21, T7N, 80W, 6th PM



EE3 LLC
TYPICAL RIG LAYOUT
EVANS 2-21H
SECTION 21, T7N, 80W, 6th PM



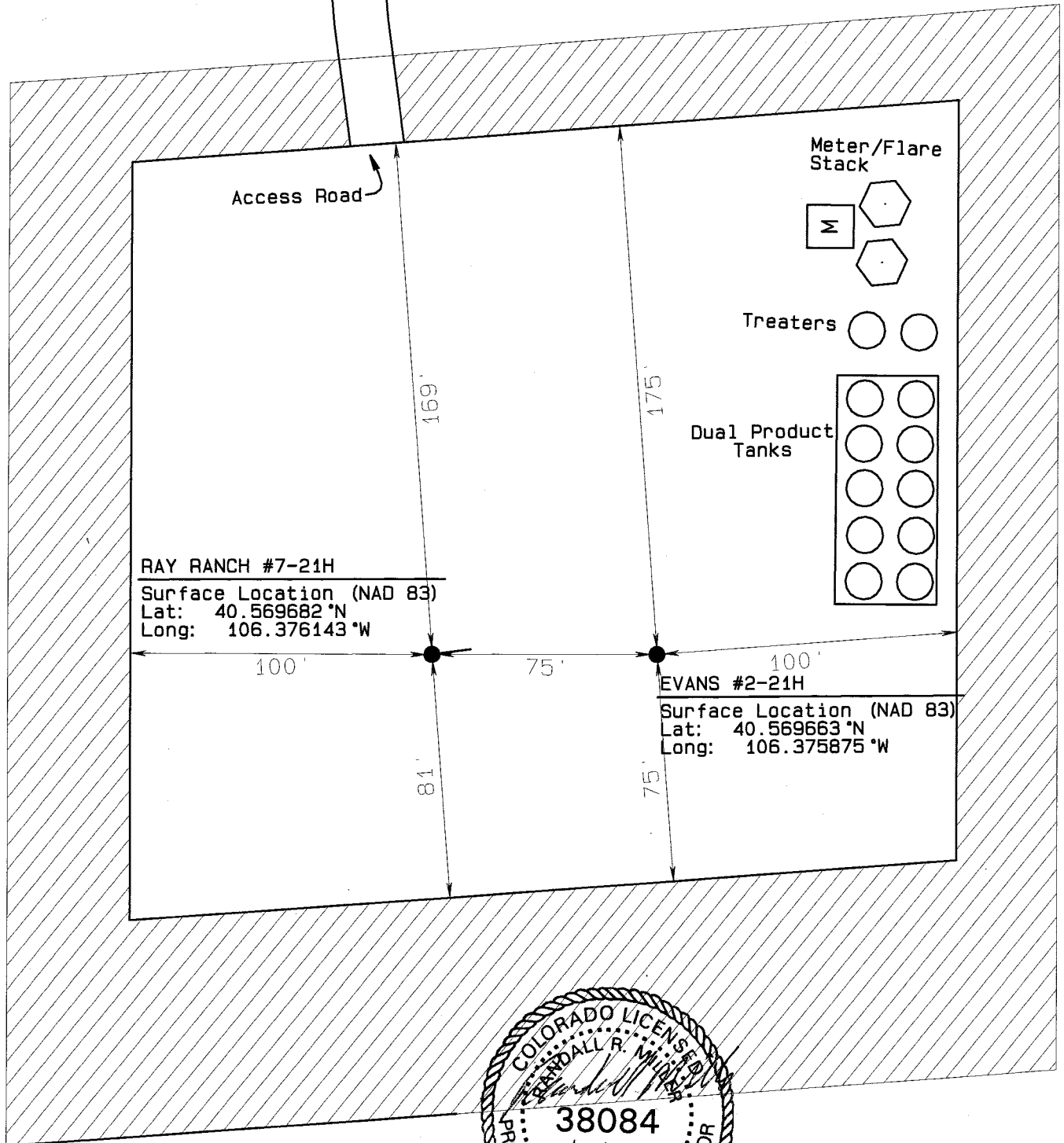
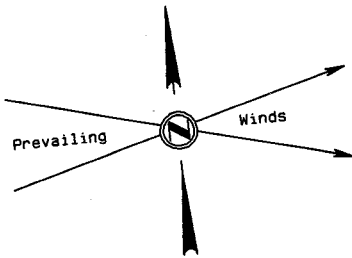
GRAPHIC SCALE 1"=50'



NORTH PARK ENGINEERING & CONSULTING, INC.
PO Box 395 Walden, CO 80480 970-723-3725

EE3 LLC

PRODUCTION FACILITY LAYOUT
EVANS 2-21H and RAY RANCH 7-21H
SECTION 21, T7N, 80W, 6th PM



RAY RANCH #7-21H

Surface Location (NAD 83)

Lat: 40.569682°N

Long: 106.376143°W

EVANS #2-21H

Surface Location (NAD 83)

Lat: 40.569663°N

Long: 106.375875°W

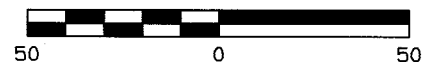


Reclaimed Area



GRAPHIC SCALE

1"=50'



NORTH PARK ENGINEERING & CONSULTING, INC.
PO Box 395 Walden, CO 80480 970-723-3725