

T7N, R80W, 6th P.M.

EE3 LLC

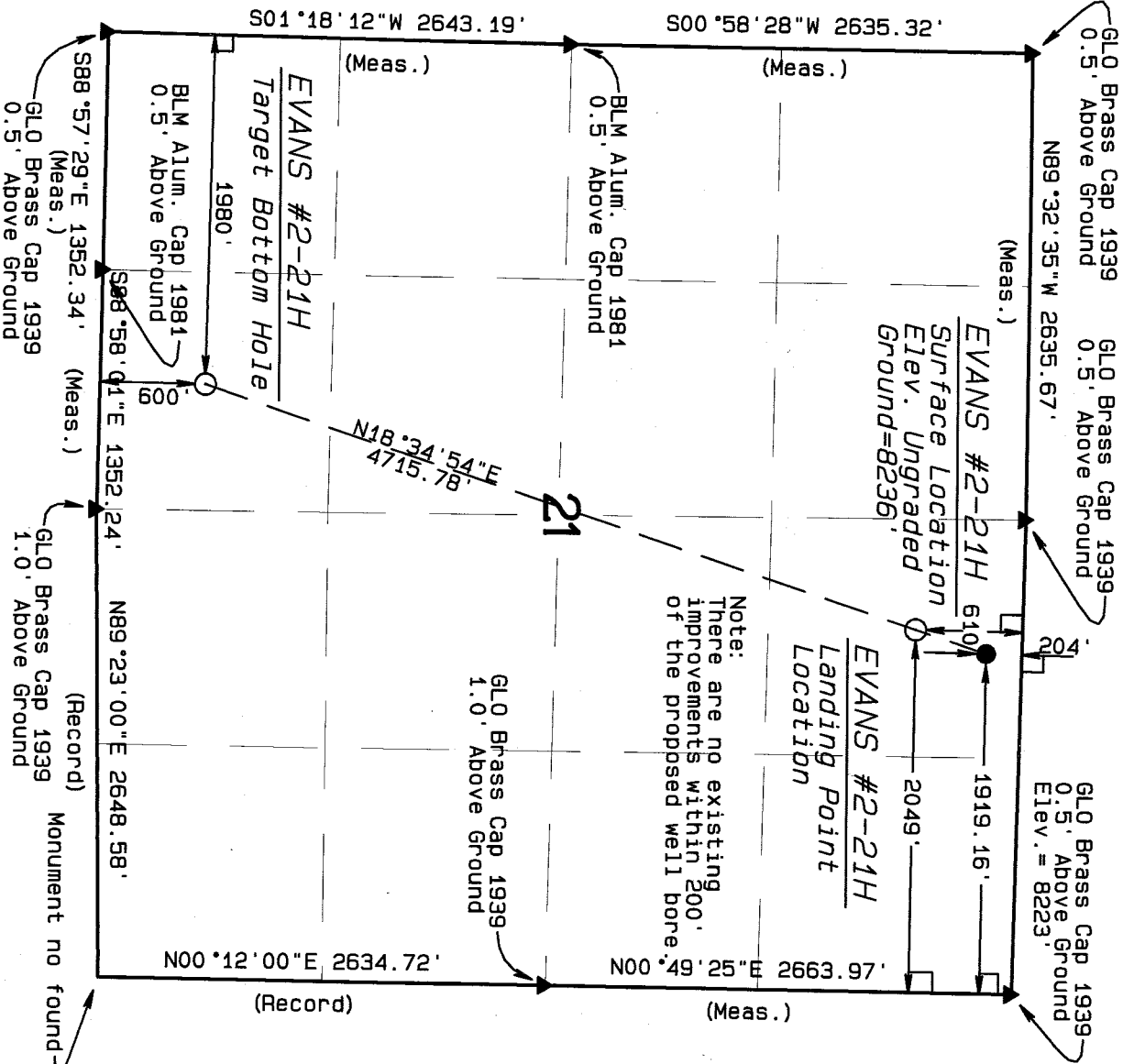
Well location, EVANS #2-21H, located as shown in the NW1/4NE1/4 of Section 21, T7N, R80W, 6th P.M., Jackson County, Colorado.

BASIS OF BEARINGS

BASIS OF BEARINGS IS TRUE NORTH USING GPS

BASIS OF ELEVATION

SPOT ELEVATION AT THE NE CORNER OF SECTION 21, T7N, R80W, 6TH PM, TAKEN FROM THE COALMONT QUADRANGLE, USGS 7.5 MIN QUAD (TOPOGRAPHIC MAP) WITH SAID ELEVATION MARKED AS BEING 8223 FEET.



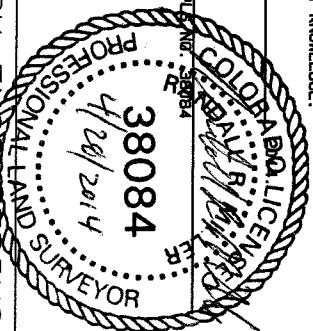
GRAPHIC SCALE 1"=1000'



I, RANDALL R. MILLER, BEING A REGISTERED LAND SURVEYOR IN THE STATE OF COLORADO, DO HEREBY CERTIFY THAT THIS PLAT WAS MADE BY ME AND/OR UNDER MY DIRECT SUPERVISION AND THAT IT IS ACCURATE TO THE BEST OF MY KNOWLEDGE.

DATED THIS _____ DAY OF _____

RANDALL R. MILLER, COLORADO PL. NO. 38084



NORTH PARK ENGINEERING & CONSULTING, INC.

P.O. BOX 395
MALDEN, CO 80480
(970) 723-3725

DATE OF FIELD WORK: SEPT 12, 2013 DRAWING COMPLETION: MARCH, 2014
SURVEYED BY: RAS DRAWN BY: TAT CHECKED BY: RRM

SHEET 1 OF 1

JOB NO.: 13-023

LEGEND

90° SYMBOL
FOUND CORNER
PROPOSED WELL
PROPOSED BHL/LPL

NAD 83 (TARGET BOTTOM HOLE)
LATITUDE=40.557353°N
LONGITUDE=106.381124°W

NAD 83 (SURFACE LOCATION)
LATITUDE=40.569663°N
LONGITUDE=106.375875°W
PDOP = 1.408
NAD 83 (LANDING POINT LOCATION)
LATITUDE=40.568554°N
LONGITUDE=106.376348°W