

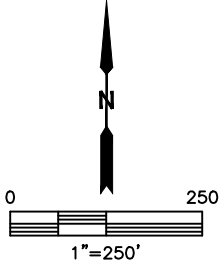
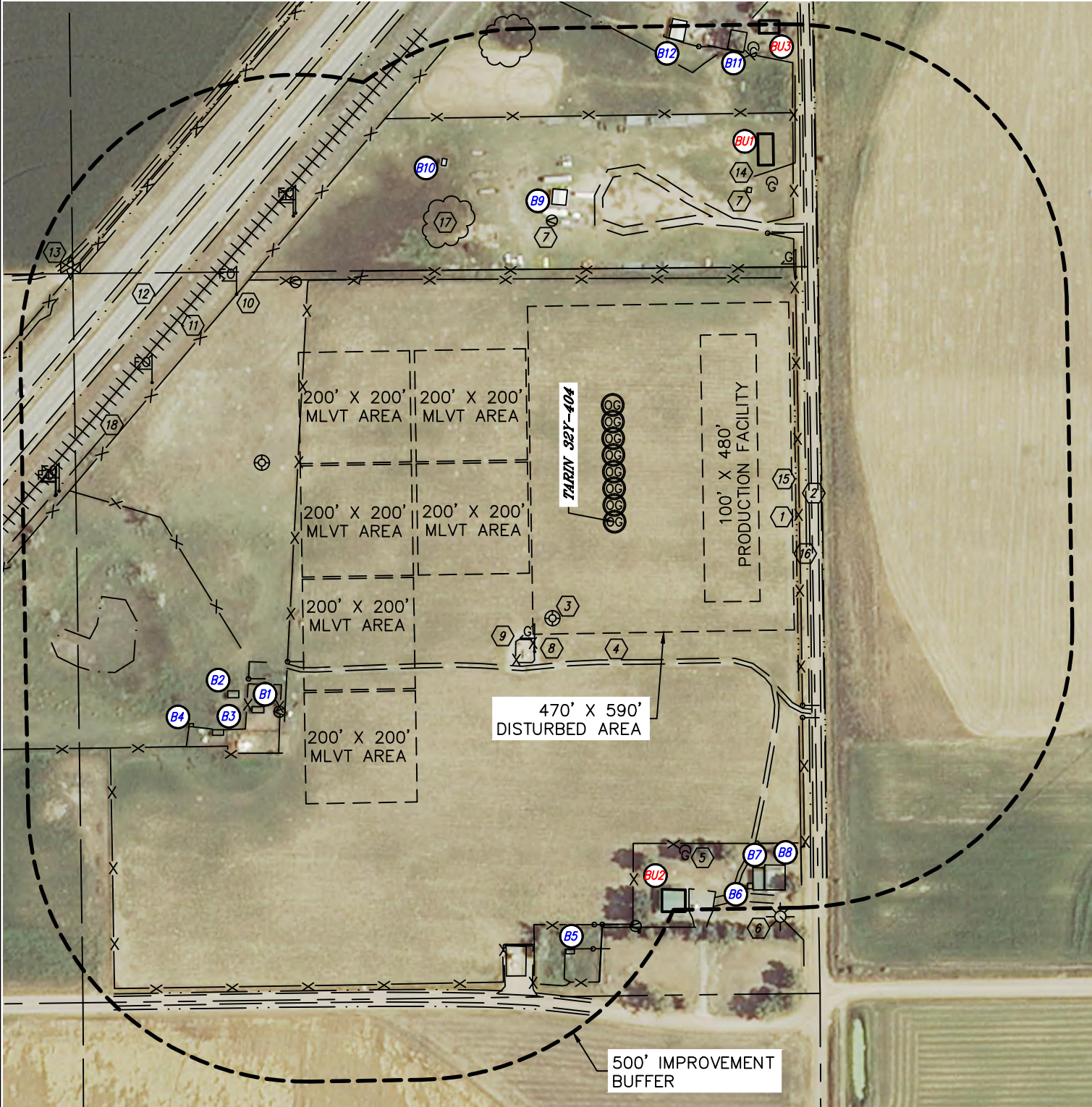


Lat40°, Inc. 1635 Foxtrail Drive, Suite 325 Loveland, CO 970-776-3321

# LOCATION DRAWING

TARIN 32X-HZ PAD

SECTION: 32  
TOWNSHIP: 4N  
RANGE: 66W





Lat40°, Inc. 1635 Foxtrail Drive, Suite 325 Loveland, CO 970-776-3321

## LOCATION DRAWING

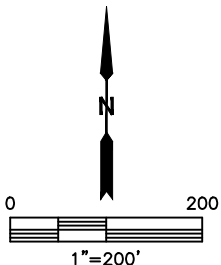
TARIN 32X-HZ PAD

SECTION: 32  
TOWNSHIP: 4N  
RANGE: 66W

### IMPROVEMENTS:

(MEASURED FROM THE PROPOSED TARIN 32Y-404 WELL LOCATION)

- ① BUILDING UNIT BU1 692' NE, BU2 667' SE, BU3 917' NE
- ② BUILDING B1 713' SW, B2 741' SW, B3 797' SW, B4 840' SW, B5 773' SW, B6 693' SE, B7 671' SE, B8 674' SE, B9 576' NW, B10 708' NW, B11 876' NE, B12 873' NE
- ③ FENCE 333' E, 438', 456' & 731' N, 580' S, 574' W, 783' & 1033' NW
- ④ COUNTY ROAD 29 351' E, COUNTY ROAD 38 864' S
- ⑤ EX. WELL HEAD 207' SW, 643' NW
- ⑥ FIELD ROAD 249' S, 516' N, 1044' NW
- ⑦ LP TANK 605' SE, 673' & 889' NE
- ⑧ LIGHT POLE 771' SE
- ⑨ WATER SPIGOT 553' & 717' NW, 693' SW, 729' S; PUMP HOUSE 639' NE, 737' S
- ⑩ GAS MARKER "AKA" 275' SW, 548' NE
- ⑪ PRODUCTION EQUIPMENT (PDC) 259' SW & 780' SW
- ⑫ FIBER OPTIC MARKER 794', 798', 869' & 1001' NW
- ⑬ RAILROAD 834' NW
- ⑭ HWY 85 893' NW
- ⑮ WATER AIR VALVE 1080' NW
- ⑯ OVERHEAD UTILITY 671' NE, 771' SE
- ⑰ DITCH 327' & 374' E, 820' N, 1036' NW
- ⑱ BARROW DITCH 345' & 372' E, 858' & 887' SW, 879', 944' & 1023' NW
- ⑲ WET AREA 614' & 887' NW, 878' SW,
- ⑳ SWALE 931' NW



NEAREST: BUILDING B9 ±576' NW, BUILDING UNIT BU2 ±667'  
SE, HIGH OCCUPANCY BUILDING UNIT 5280'+,  
DESIGNATED OUTSIDE ACTIVITY AREA 5280'+,  
PUBLIC ROAD 351' E (CR29),  
ABOVE GROUND UTILITY 671' NE, RAILROAD 834' NW,  
PROPERTY LINE 355' E

***SHEET 2 OF 2***

DATE: 2/18/2014  
PROJECT#: 2013166