

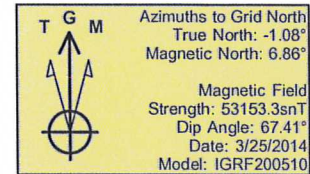
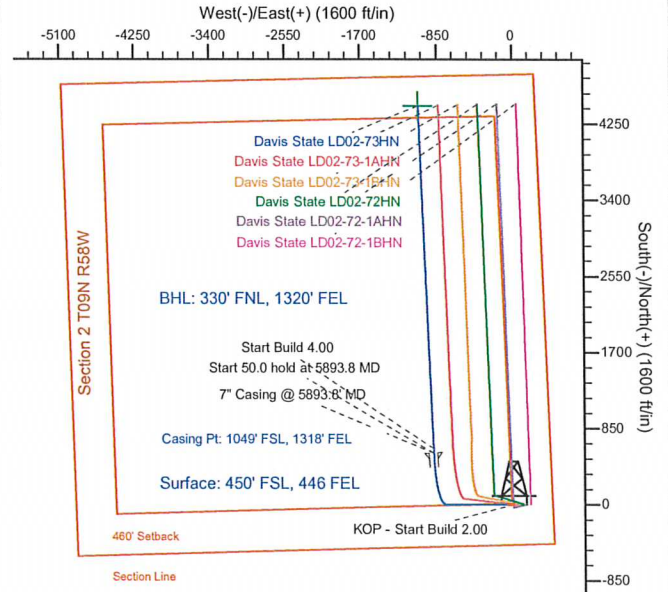
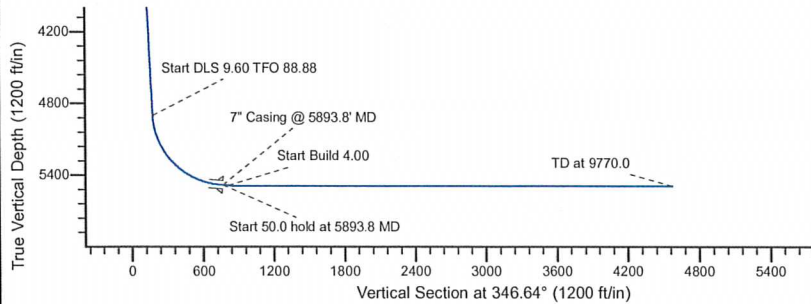
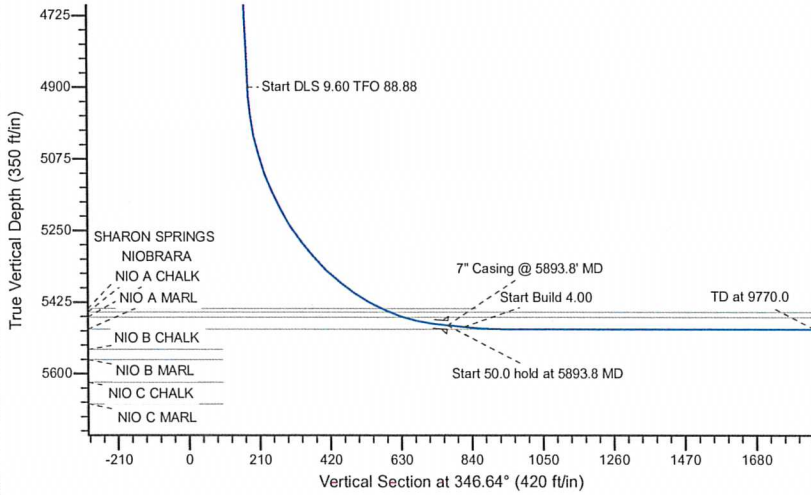
Project: Wattenberg Field
 Site: LD (Sec.2-T09N-R58W) Weld County, CO
 Well: Davis State LD02-73HN
 Wellbore: Original Drilling
 Design: APD - Rev 0

Northern Region Drilling - Working

Geodetic System: US State Plane 1983
 Datum: North American Datum 1983
 Ellipsoid: GRS 1980
 Zone: Colorado Northern Zone
 System Datum: Mean Sea Level

SECTION DETAILS

Sec	MD	Inc	Azi	TVD	+N/-S	+E/-W	Dleg	TFace	VSec	Target
1	0.0	0.00	0.00	0.0	0.0	0.0	0.00	0.00	0.0	
2	1000.0	0.00	0.00	1000.0	0.0	0.0	0.00	0.00	0.0	
3	1600.0	12.00	270.00	1595.6	0.0	-62.6	2.00	270.00	14.5	
4	4978.2	12.00	270.00	4900.0	0.0	-765.0	0.00	0.00	176.8	
5	5876.6	86.60	358.13	5480.0	557.8	-899.4	9.60	88.88	750.5	
6	5893.8	85.00	357.69	5481.3	575.0	-900.0	9.60	-164.50	767.4	
7	5943.8	85.00	357.69	5485.7	624.8	-902.0	0.00	0.00	816.3	
8	6068.8	90.00	357.69	5491.1	749.5	-907.0	4.00	0.00	938.8	
9	9770.0	90.00	357.69	5491.0	4447.6	-1056.3	0.00	-29.51	4571.3	Davis State LD02-73HN BHL 330'FNL, 1320'FEL



WELL DETAILS: Davis State LD02-73HN				
	Ground Level: 4662.0			
0.0	0.0	1529419.47	3464378.55	40.774590
				-103.823270
Plan: APD - Rev 0 (Davis State LD02-73HN/Original Drilling)				
Created By: Shailey Jewell		Date: 8:10, March 27 2014		
Checked: _____		Date: _____		
Reviewed: _____		Date: _____		
Approved: _____		Date: _____		