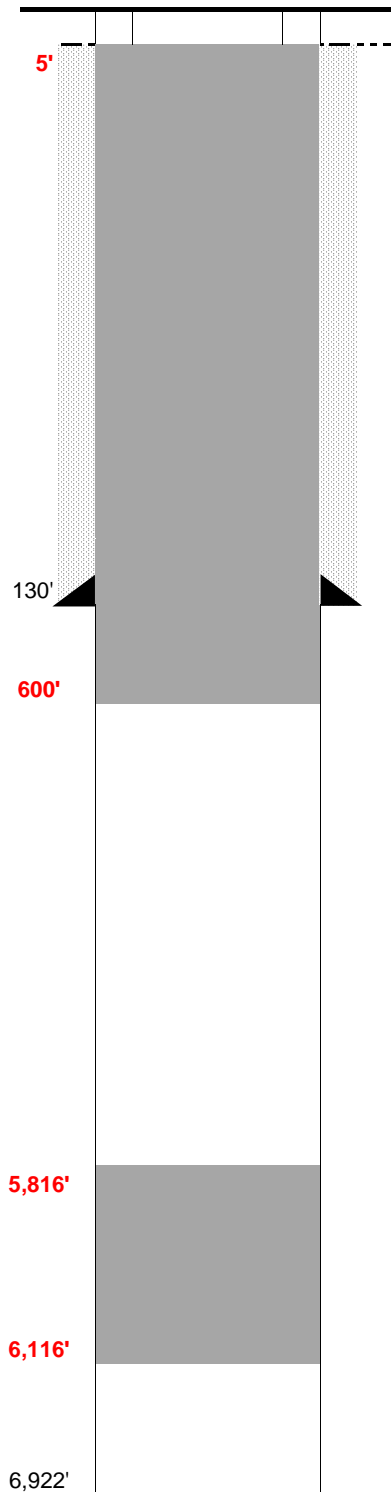


WELL NAME: Hnizdil #1-14
OPERATOR: Gemini Energy Resources Inc
COMP ZONE: _____
LOCATION: 8N 60W S14 SW SE

COUNTY: Weld
STATE: Colorado
API : 05-123-10557

SPUD: 11/15/82
P&A: 3/9/83
GL: 4,930'



SURFACE CASING

DEPTH: 130' SIZE: 8.625" GRADE: _____ WT (#/ft): 24.0
CEMENT: 130 sx of cement
COMMENTS: _____

PRODUCTION CASING

DEPTH: _____ SIZE: _____ GRADE: _____ WT (#/ft): _____
CEMENT: _____ TOC: _____
COMMENTS: _____

PERFS: _____ - _____ PROD ZONE 1: _____
PERFS: _____ - _____ ZONE 2: _____
PERFS: _____ - _____ ZONE 3: _____

PREVIOUS PLUGS

RECOVERED: _____ SIZE: _____
CMT 1: 153' - 107' COMMENT: 25 sx of Cement
CMT 2: 33' - 0' COMMENT: 10 sx of Cement
CMT 3: _____ - _____ COMMENT: _____

PROPOSED: Plug #1: 300' cement plug from 6,116' to 5,816' (300' at top of Niobrara)
Plug #2: Cement plug from 600' to surface to isolate FW sands

FORMATIONS:

NIOBRARA: 6,116'
FORT HAYS 6,360'
CODELL 6,414'
D SAND 6,830'
D SILT 6,899'
J SAND 6,916'