



COUNTY	Weld	STATE	Colorado
FIELD	Wattenberg Field		
LOCATION	SW/SE Section 18, T5N - R62W		
WELL	Antelope Y44-U41-18HNC		
LOG TYPE			
COMPANY	Bonanza Creek Energy, Inc.		
JOB NO.			
COMPANY <b>Bonanza Creek Energy, Inc.</b>			
WELL <b>Antelope Y44-U41-18HNC</b>			
FIELD <b>Wattenberg Field</b>			
COUNTY/PARISH	Weld	STATE	Colorado
UNIT MANAGER		ENGINEER	
GEOLOGIST	Dick Brunner / Scott Sawyer	CO. ENGINEER	
ELEVATIONS			
KB		4.651'	
DRILL FLOOR			
ELEVATION		4.634'	
WATER DEPTH			

SPUD DATE	Mar 9, 2014	TOTAL DEPTH	11,127'	AIR GAP
LOGGING DATE	FROM:	TO:		
LOGGING DEPTH	FROM: 6,000'	TO: 11,127'		

[illegible]

\_\_\_\_\_

\_\_\_\_\_

TOTAL Gas Analyzer	DRILLING FLUID COMPANY	
1% C1 = 100 UNITS	DRILLING FLUID TYPE	Water Based Mud
20% C1 = 2,000 UNITS	DRILLING CONTRACTOR	
	LOG SCALE	1" = 20'
		RIG NAME
		Cade 21
		LOGGING UNIT


# Engineering

 TRIP GAS CONNECTION GAS

## Lithology

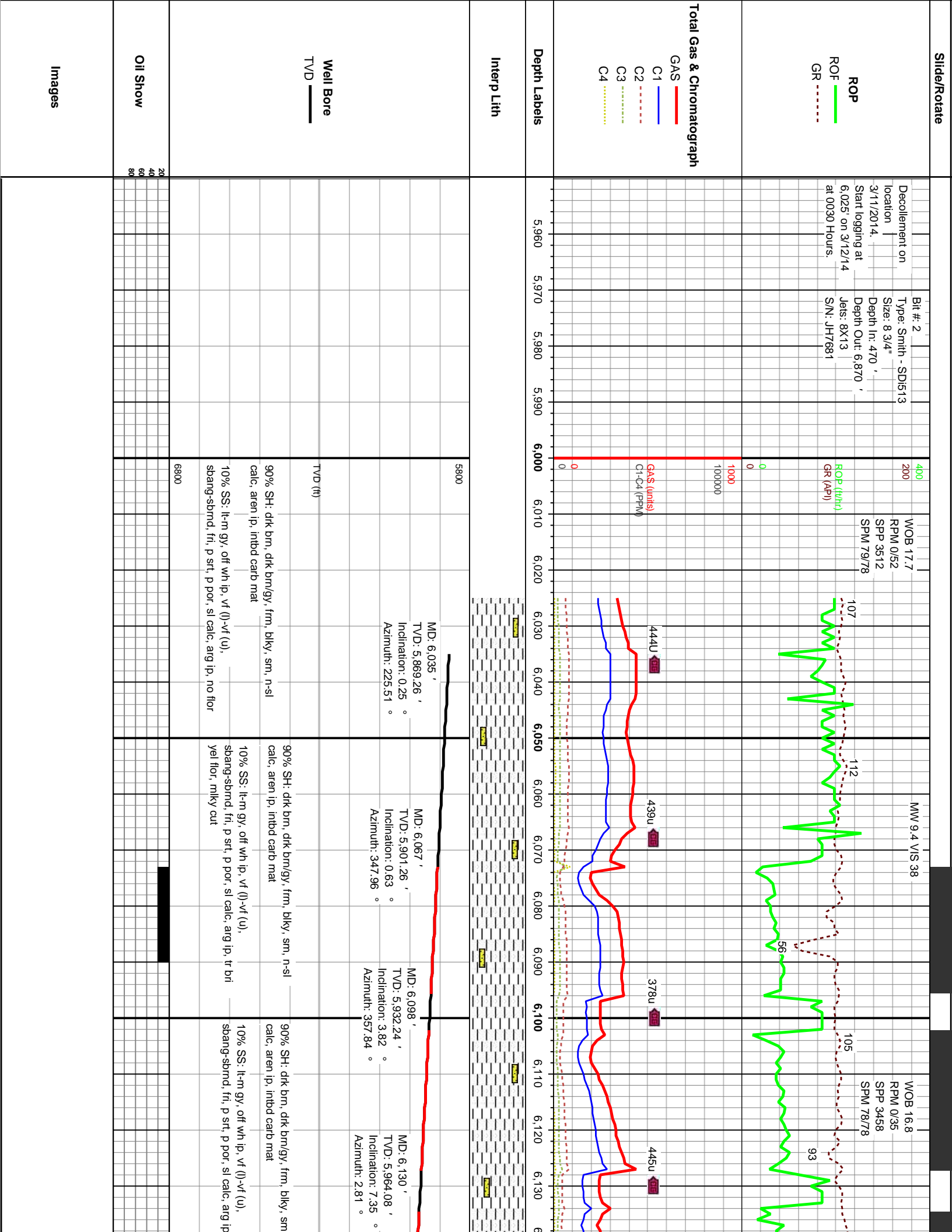
 SANDSTONE

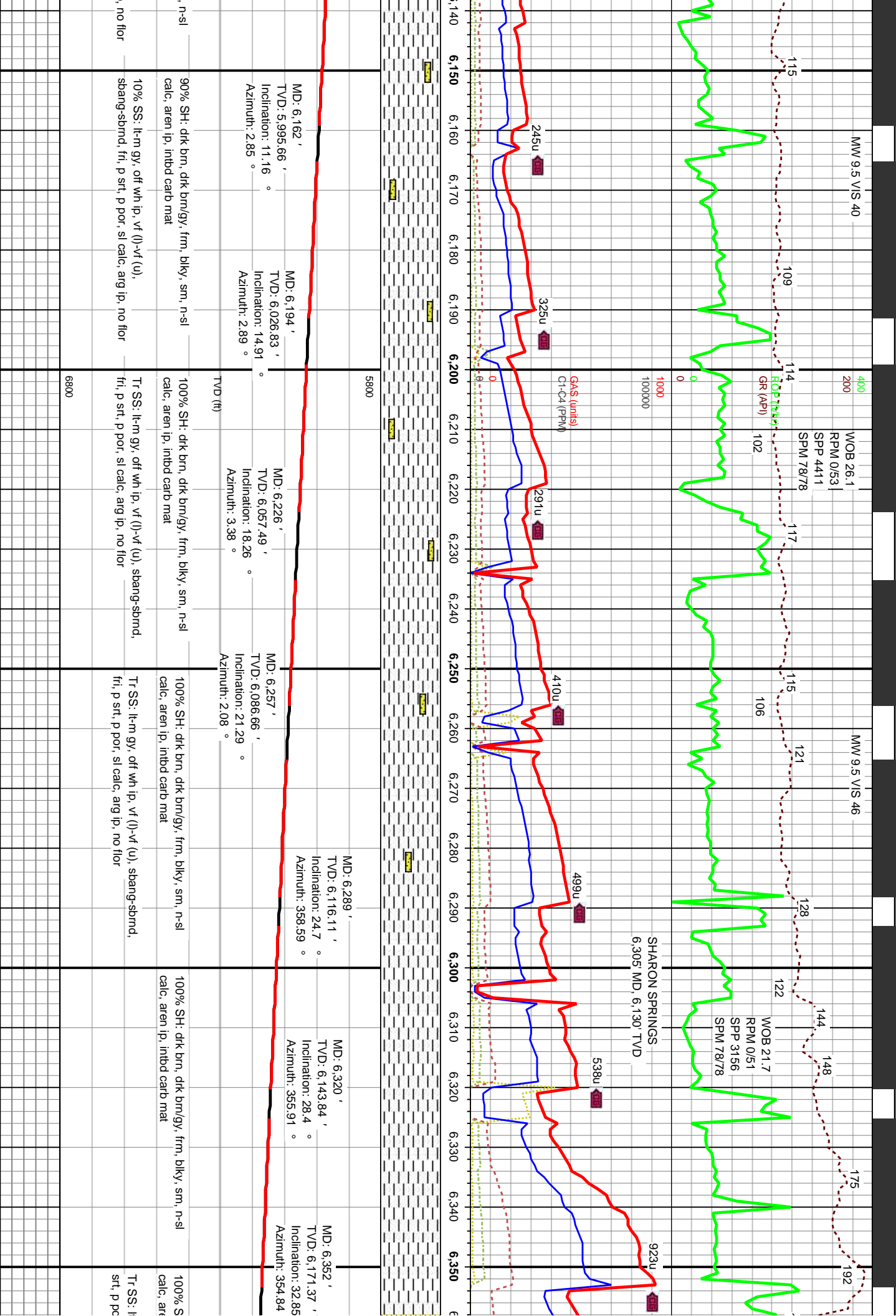
 Chalk

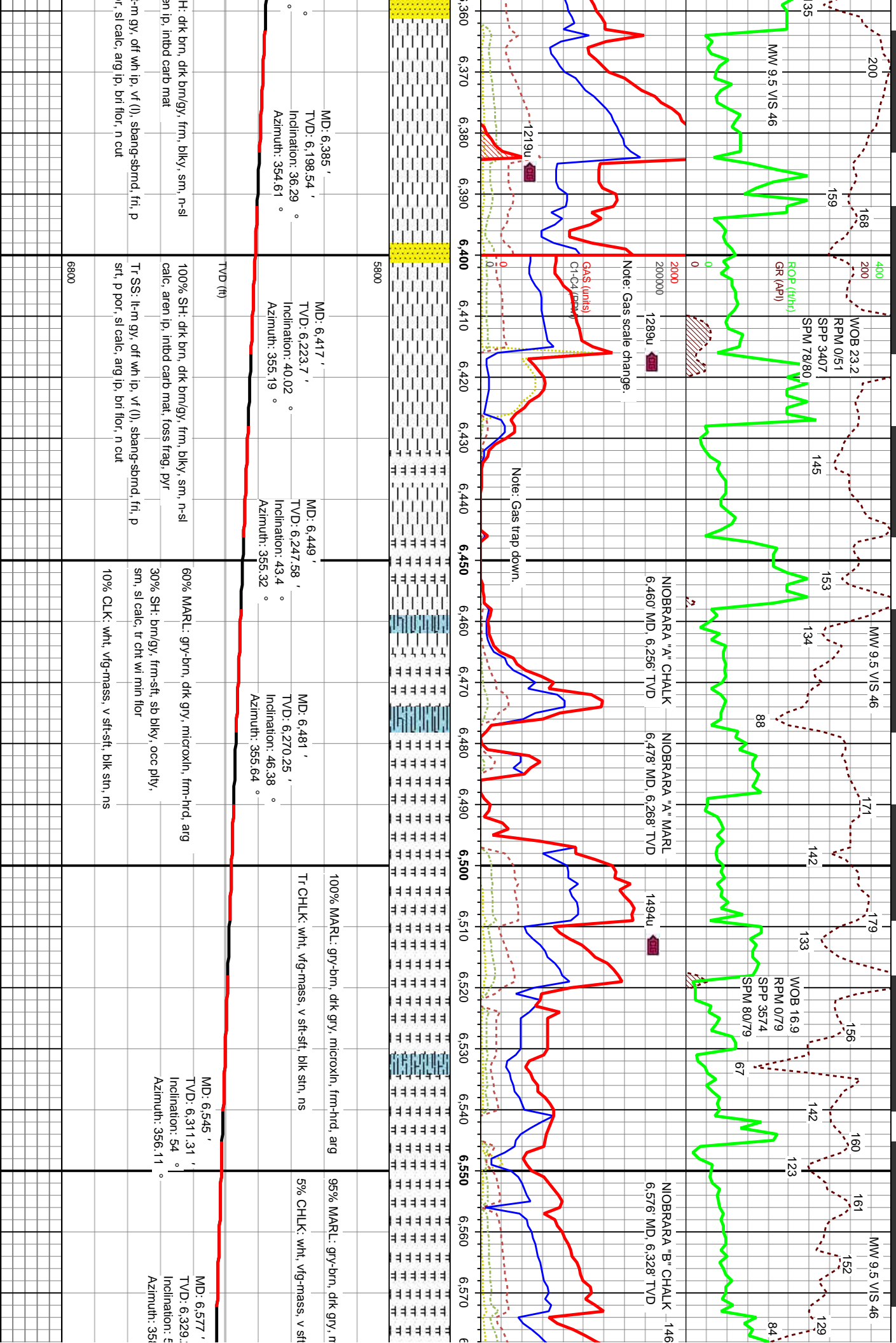
 Limestone  
 MARLSTONE  
 SHALE

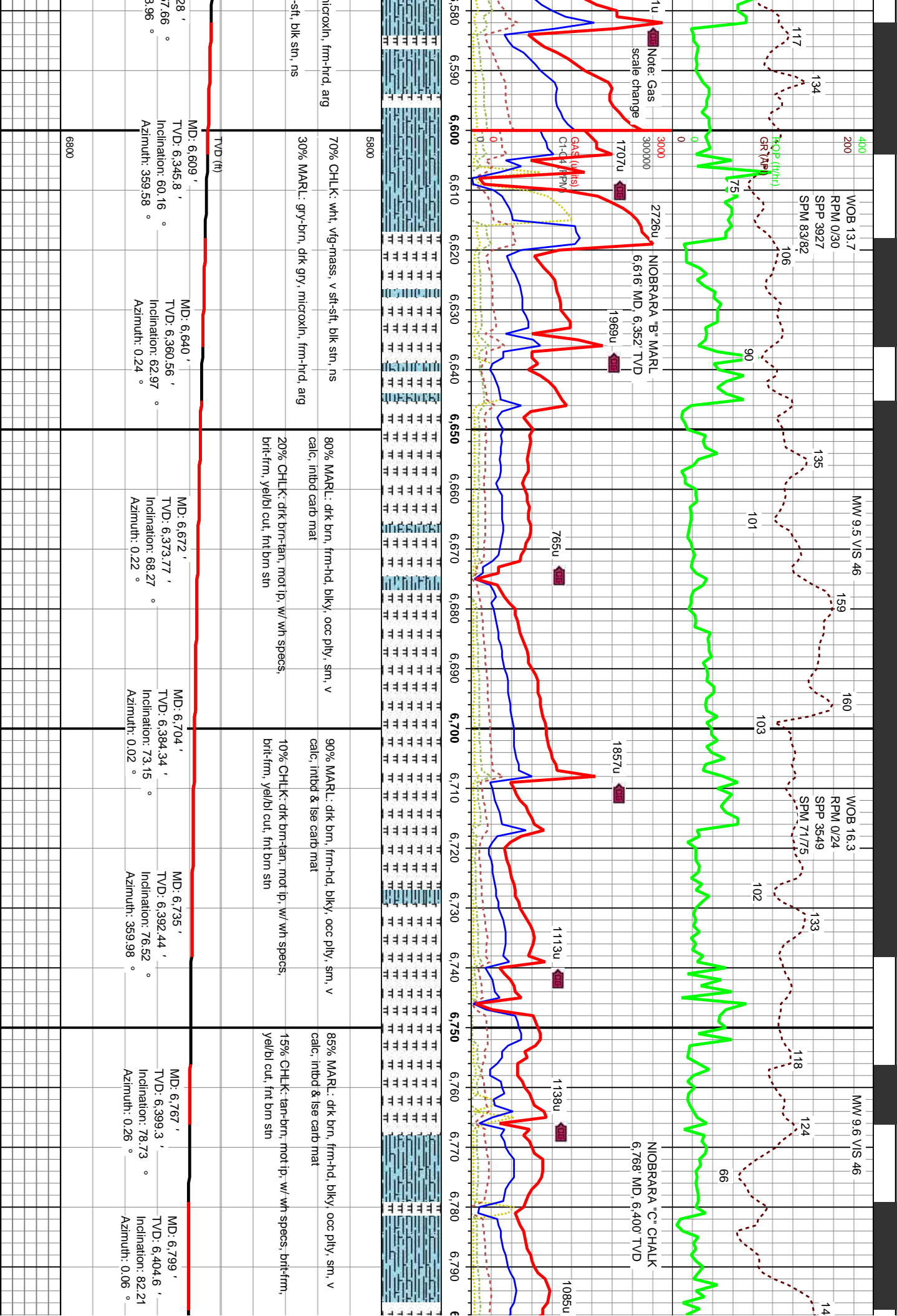
# Stringer

 SANDSTONE STRIN...

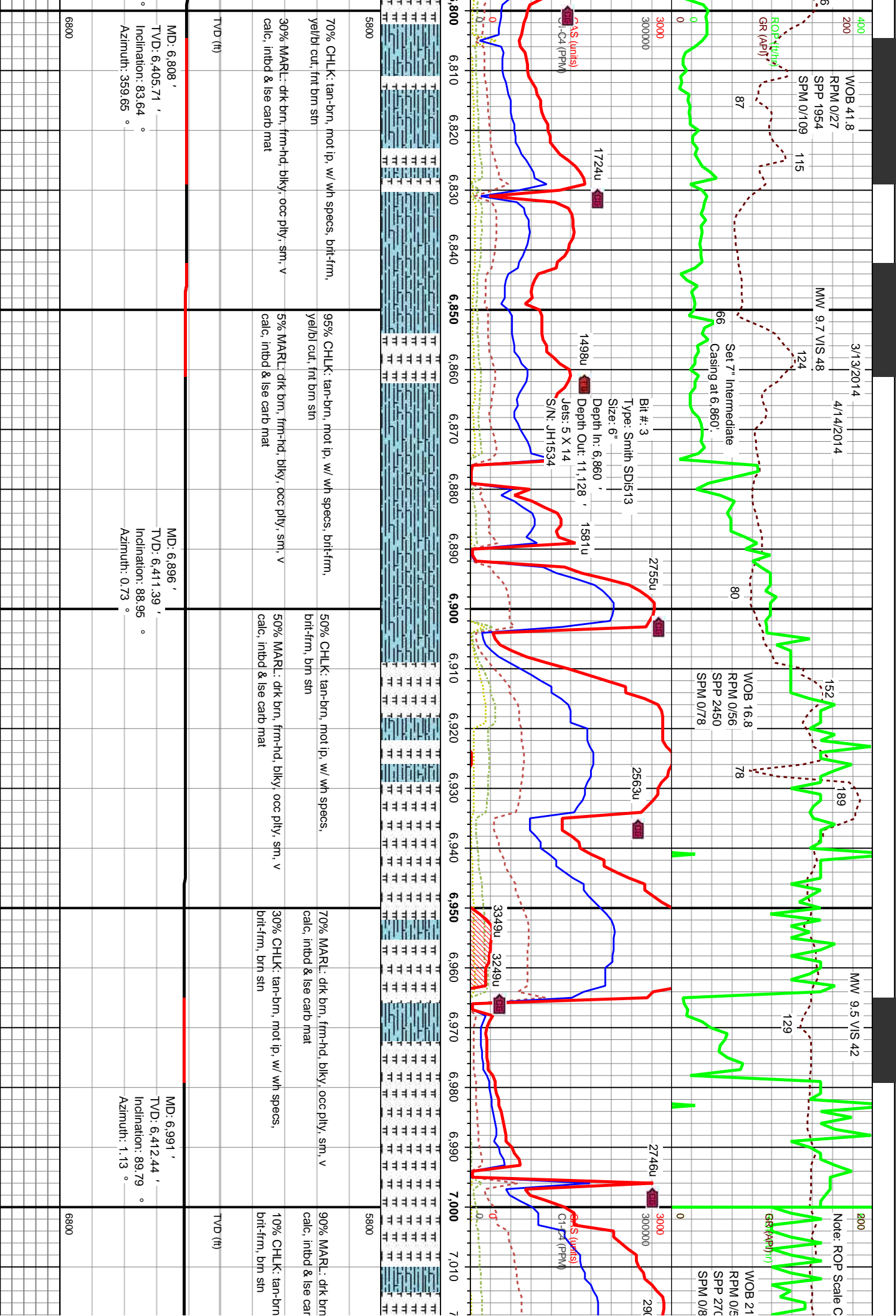


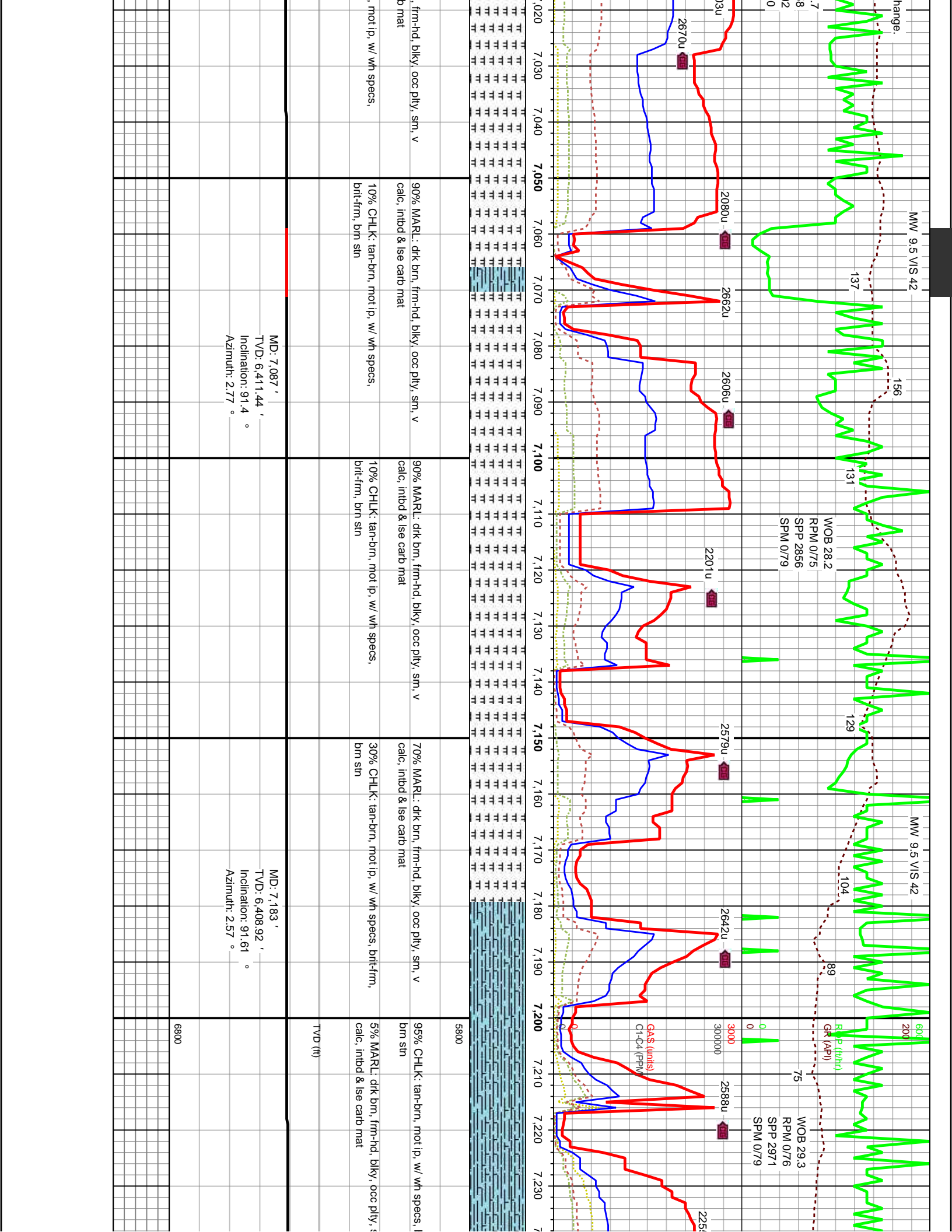


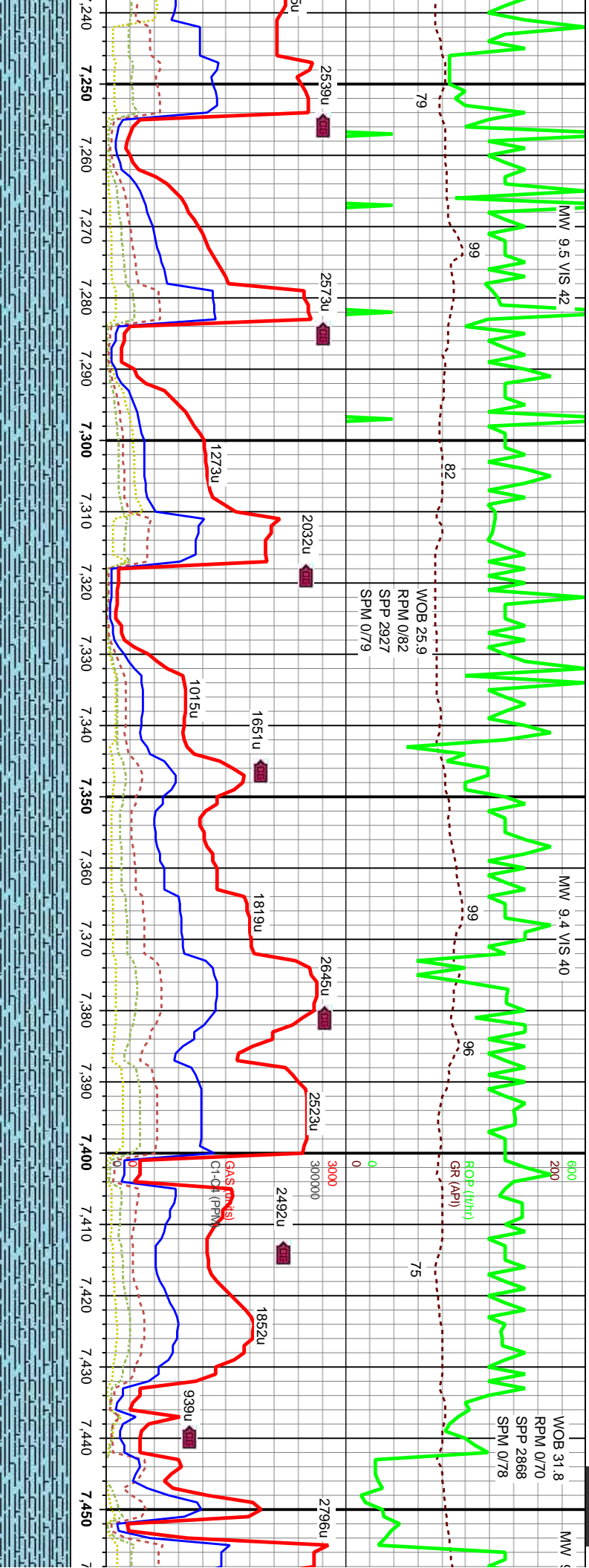






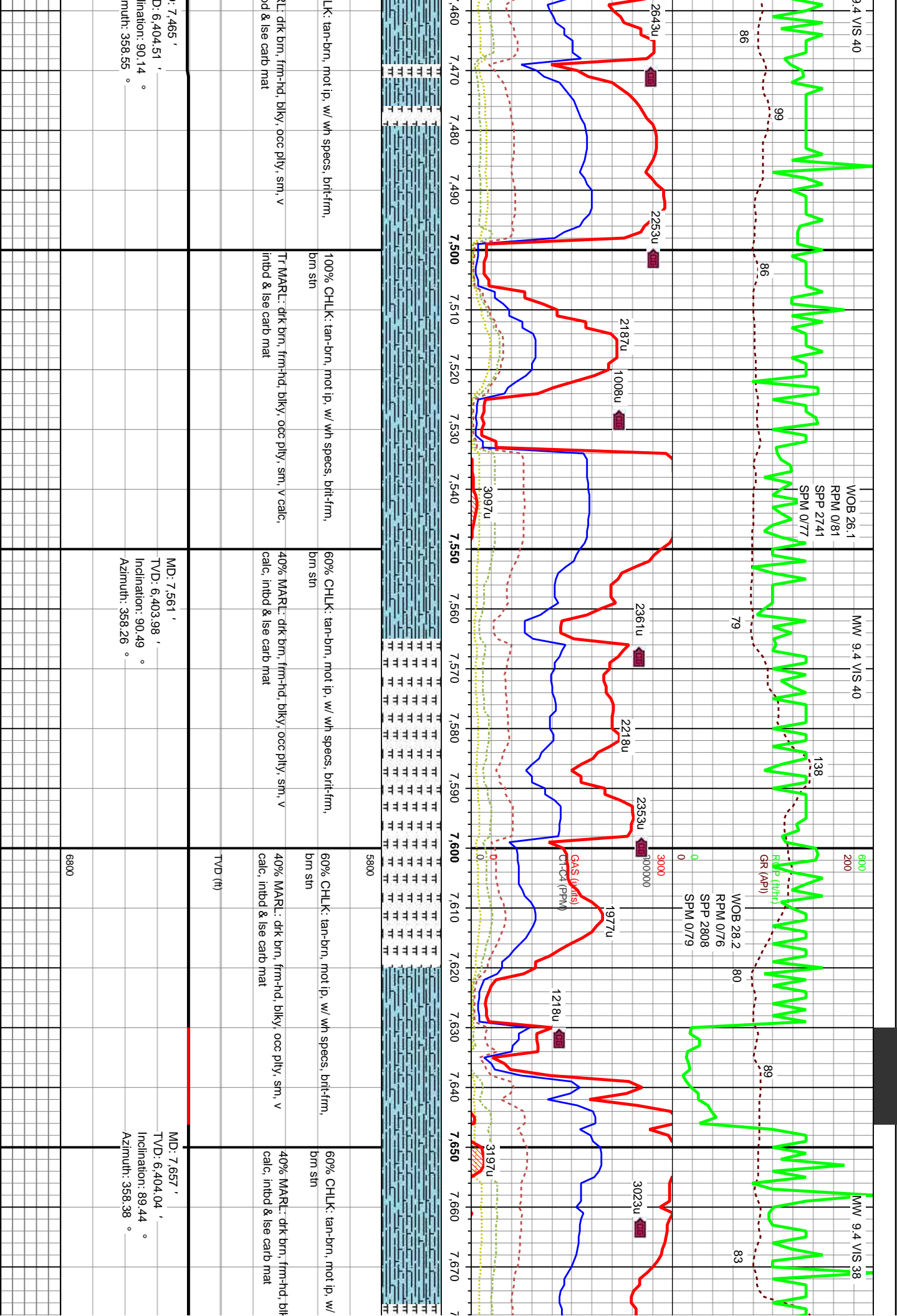


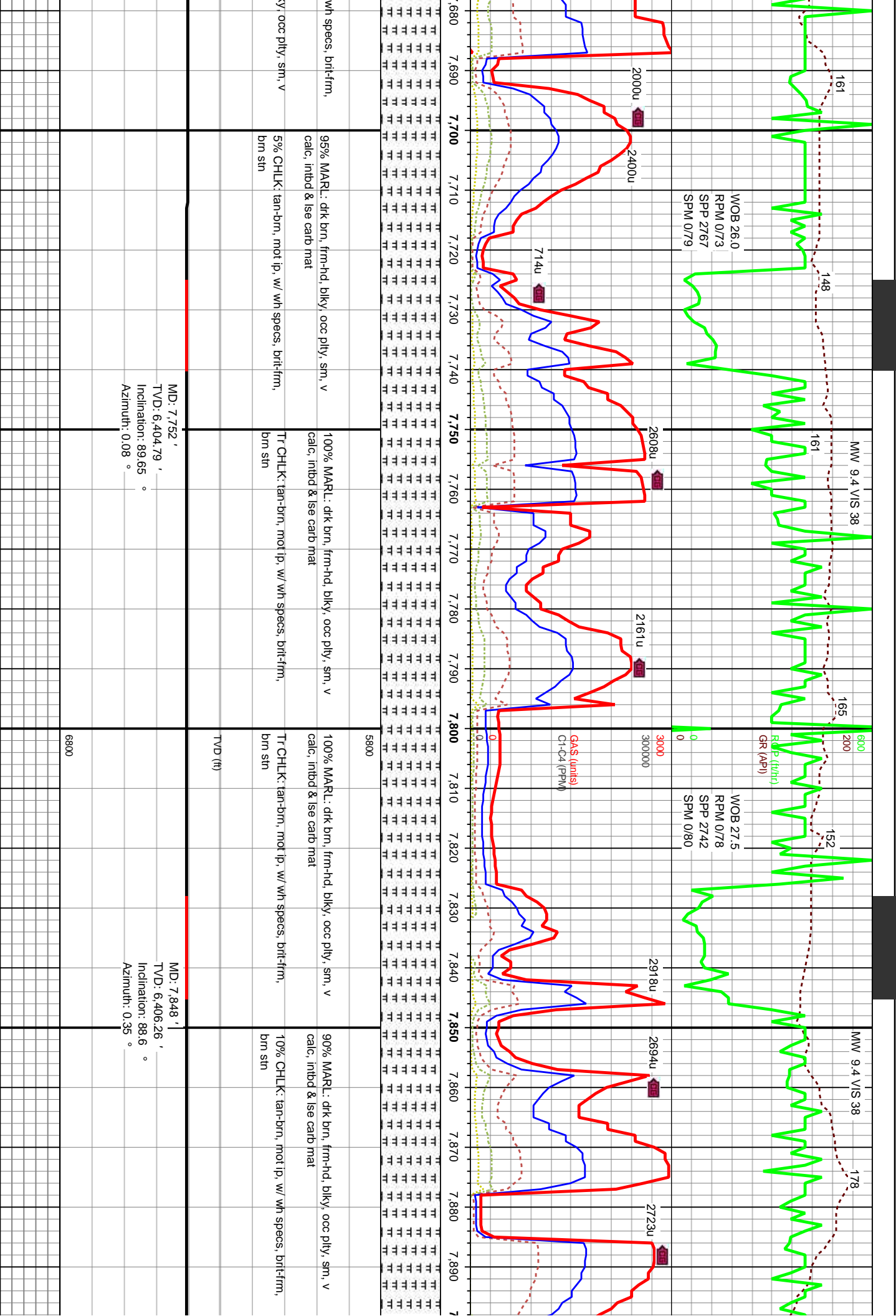


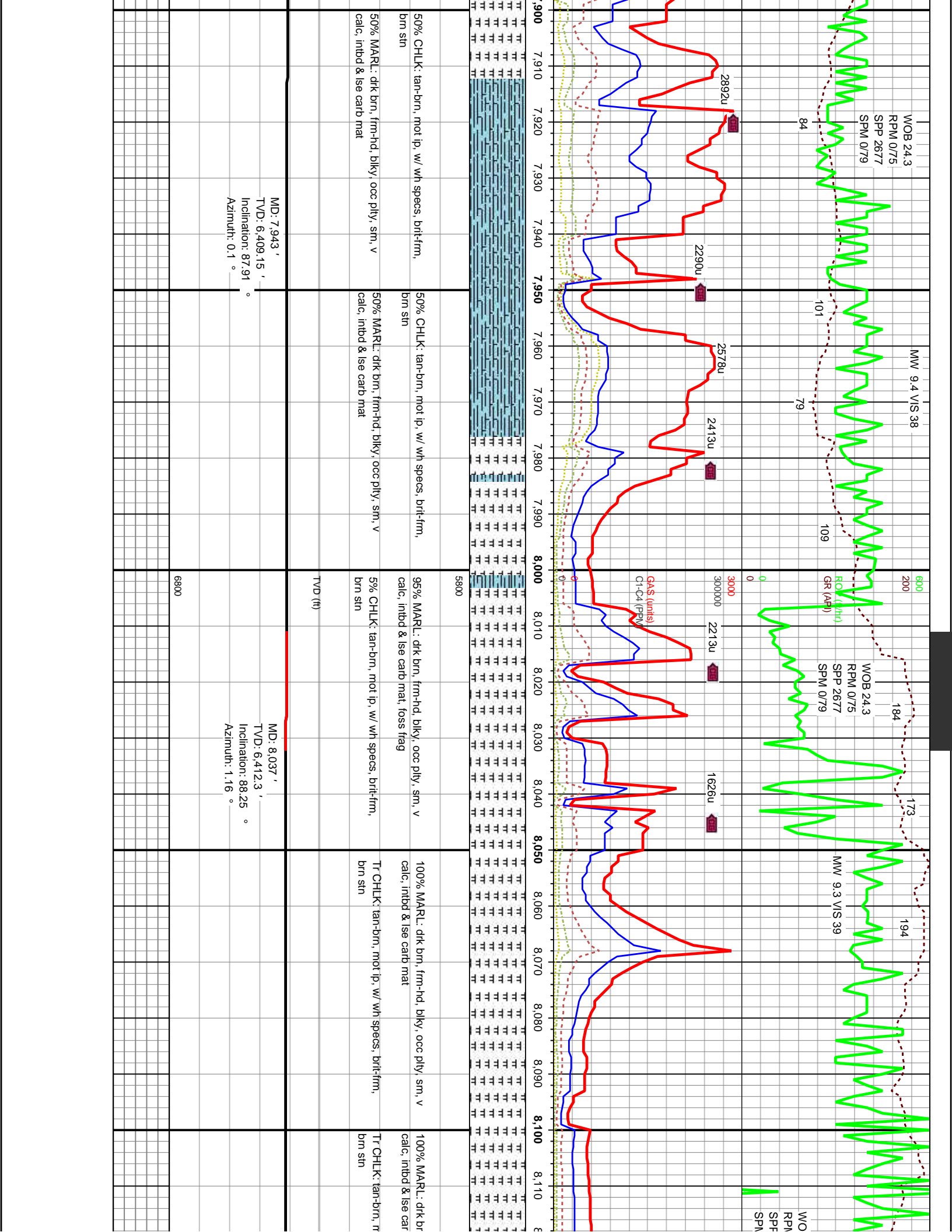


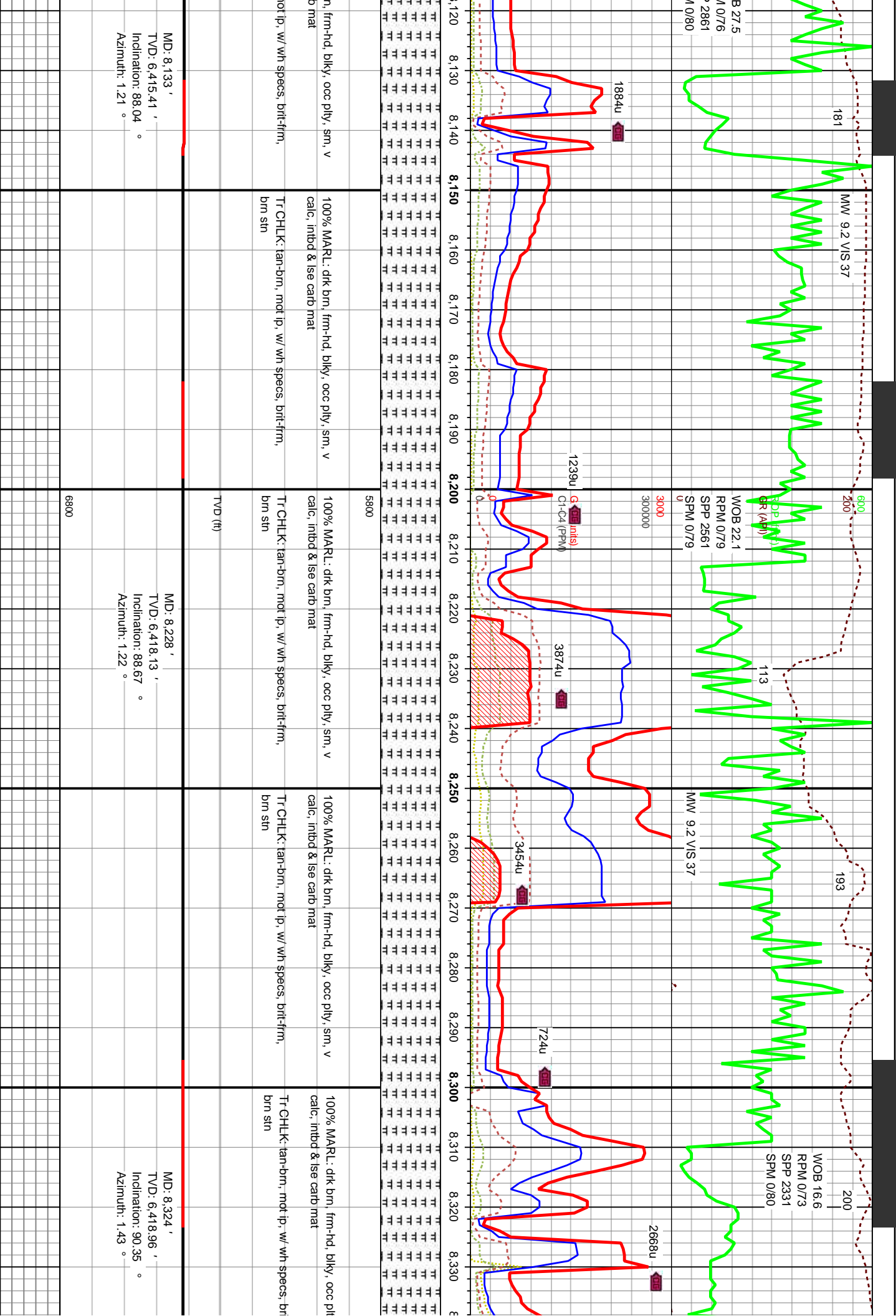
100% CHLK: tan-brn, mot ip, w/ wh specs, brit-firm, brn stn		100% CHLK: tan-brn, mot ip, w/ wh specs, brit-firm, brn stn		100% CHLK: tan-brn, mot ip, w/ wh specs, brit-firm, brn stn		95% CHLK: tan-brn, mot ip, w/ wh specs, brit-firm, brn stn		95% CHLK: tan-brn, mot ip, w/ wh specs, brit-firm, brn stn	
MD: 7.275 ' TVD: 6,407.06 ' Inclination: 90.7 ° Azimuth: 0.96 °		MD: 7.371 ' TVD: 6,405.54 ' Inclination: 91.12 ° Azimuth: 359.86 °		TVD (ft)		6800		MC TV Inc Azi	



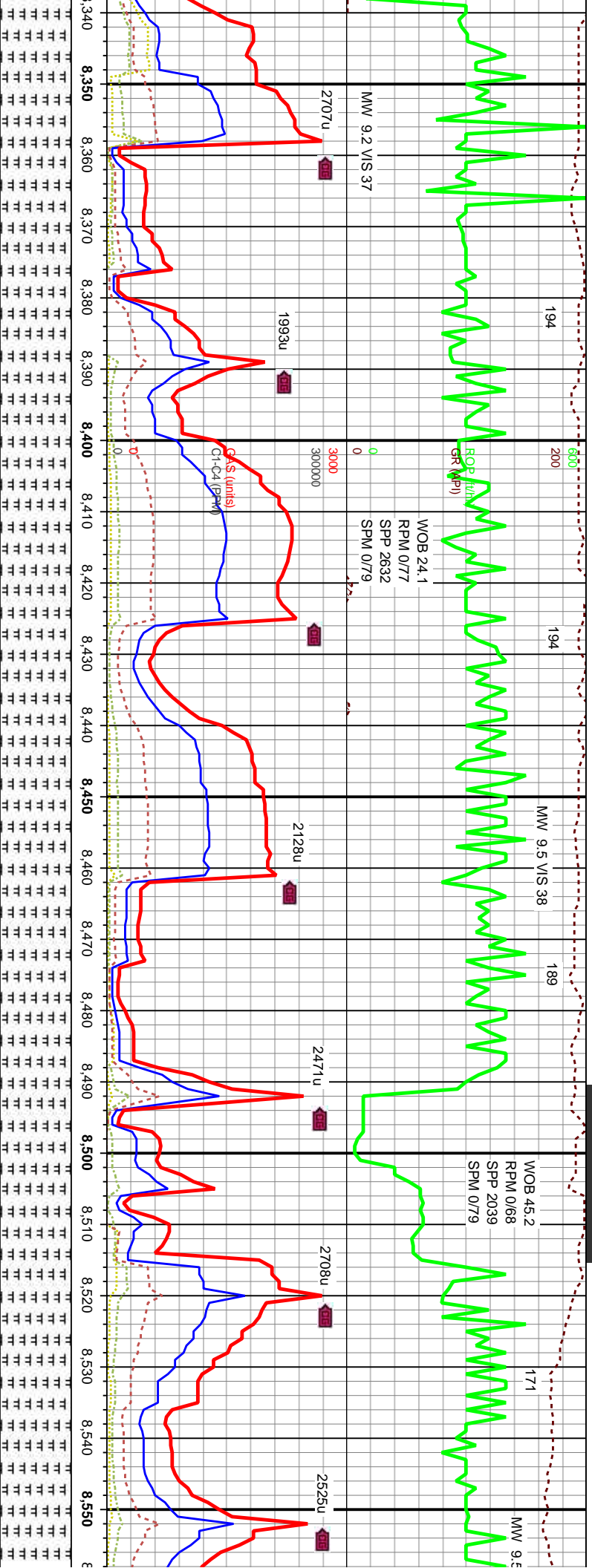




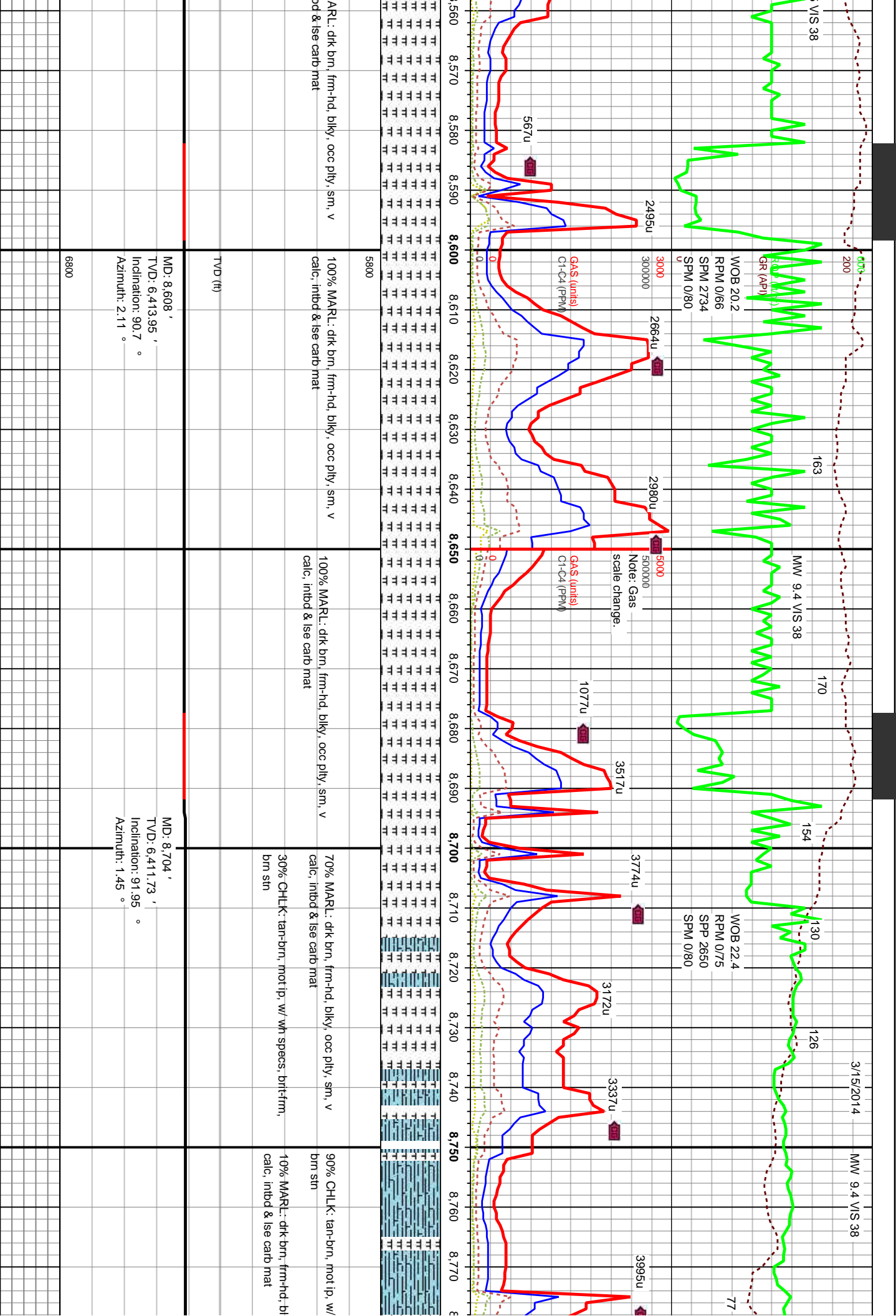


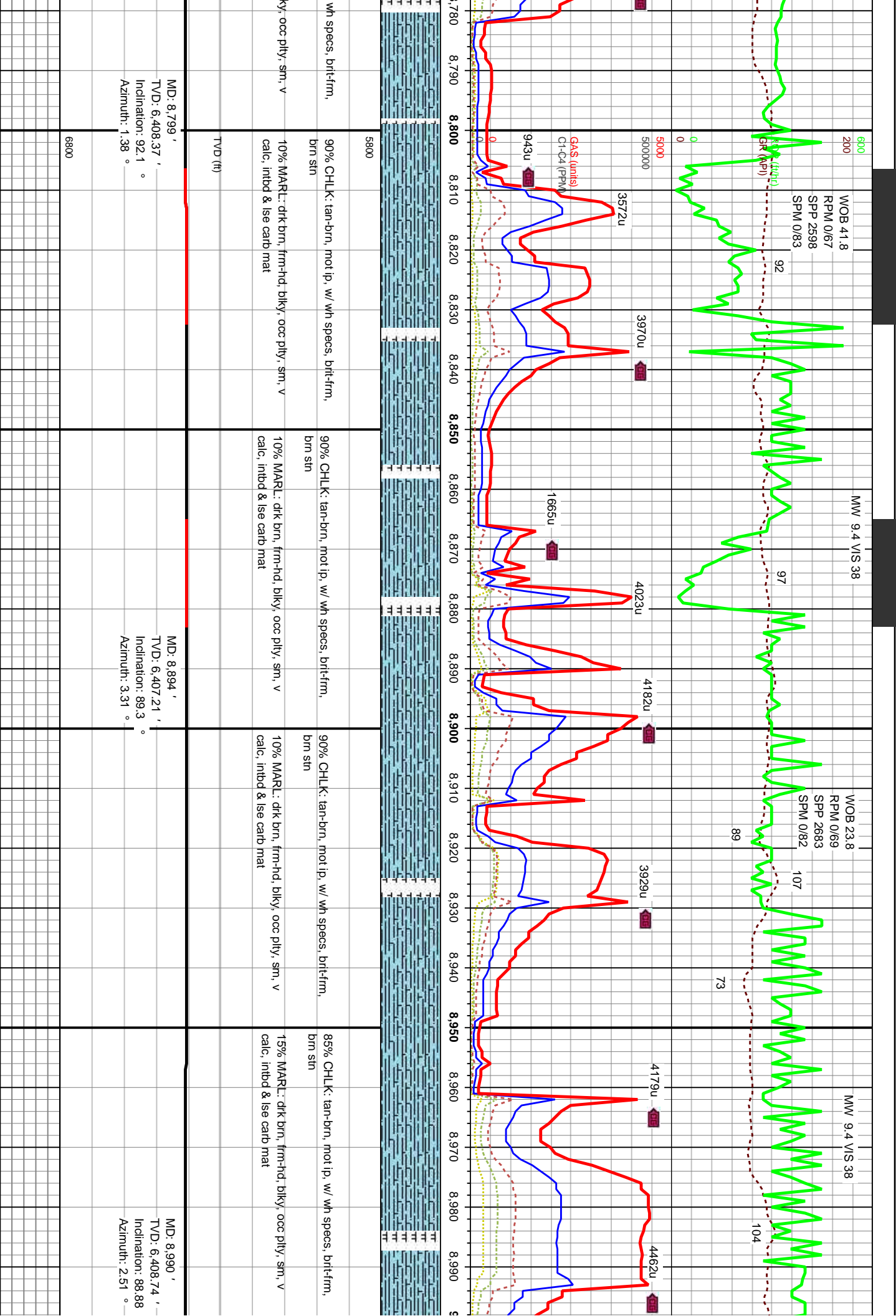




[illegible]







WOB 41.8  
RPM 0/67  
SPP 2598  
SPM 0/83

MW 9.4 VIS 38

WOB 23.8  
RPM 0/69  
SPP 2683  
SPM 0/82

MW 9.4 VIS 38

MD: 8,799 '  
TVD: 6,408.37 '  
Inclination: 92.1 °  
Azimuth: 1.38 °

MD: 8,894 '  
TVD: 6,407.21 '  
Inclination: 89.3 °  
Azimuth: 3.31 °

MD: 8,990 '  
TVD: 6,408.74 '  
Inclination: 88.88 °  
Azimuth: 2.51 °

