

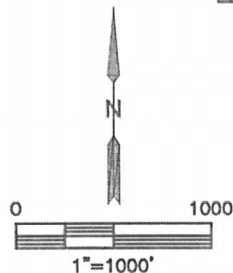
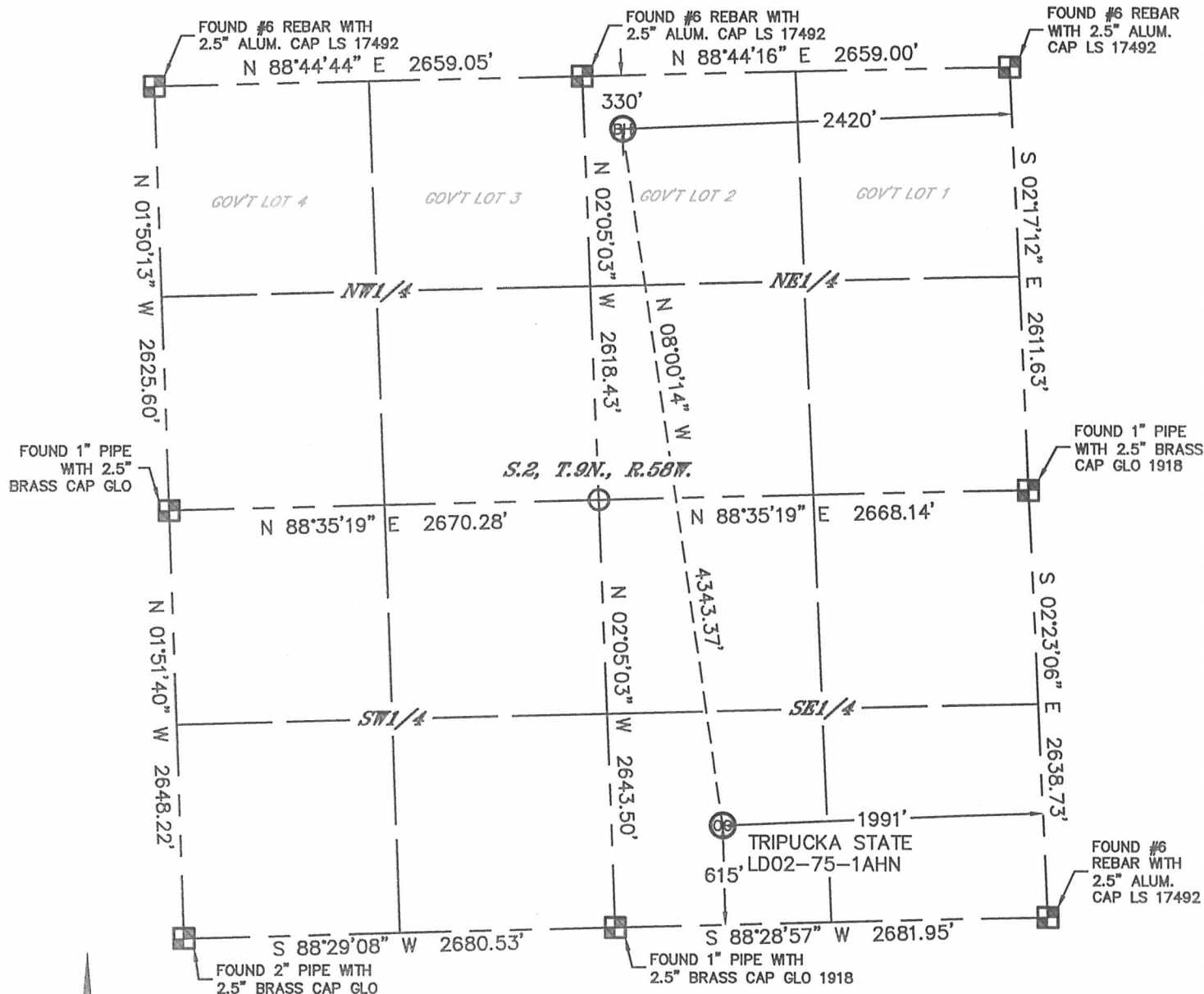


Lat40°, Inc. 1635 Foxtrail Drive, Suite 325 Loveland, CO 970-776-3321

# WELL LOCATION CERTIFICATE

THIS MAP DOES NOT REPRESENT A BOUNDARY SURVEY

SECTION: 2  
TOWNSHIP: 9N  
RANGE: 58W



In accordance with a request from Cody Ball with Noble Energy Inc.

Lat40°, Inc. has determined the surface location of the TRIPUCKA STATE LD02-75-1AHN to be 615' from the SOUTH line and 1991' from the EAST line and the bottom hole to be 330' from the NORTH line and 2420' from the EAST line as measured at right angles from the section lines of Section 2, Township 9 North, Range 58 West of the Sixth Principal Meridian, County of Weld, State of Colorado.

I hereby state that this Well Location Certificate was prepared by me, or under my direct supervision, that the fieldwork was completed on 9/6/2013, for and on behalf of Noble Energy Inc. That this is not a Land Survey Plat or an Improvement Survey Plat, and that it is not to be relied upon for establishment of fence, building, or other future improvement lines.

## NOTE:

- 1) Bearings shown are Grid Bearings of the Colorado State Plane Coordinate System, North Zone, North American Datum 1983/2007. The lineal dimensions as contained herein are based upon the "U.S. Survey Foot."
  - 2) Ground elevations are based on an observed GPS elevation (NAVD 1988 DATUM).
  - 3) IMPROVEMENTS: See LOCATION DRAWING for all visible improvements within 500' of disturbed area.
  - 4) SURFACE USE: RANGELAND
  - 5) INSTRUMENT OPERATOR: BRIAN ROTTINGHAUS
  - 6) NEAREST EXISTING WELL: NO EX. WELLS IN SECTION
- NEAREST CULTURAL ITEMS:  
BUILDING: 627' SW  
BUILDING UNIT: 4154' SW  
HIGH OCCUPANCY BUILDING UNIT: 5280'+  
DESIGNATED OUTSIDE ACTIVITY AREA: 5280'+  
PUBLIC ROAD: 5280'+  
ABOVEGROUND UTILITY: 4159' SW  
RAILROAD: 5280'+  
PROPERTY LINE: 615' S

## SURFACE LOCATION

LAT: 40.77501N  
LONG: 103.82886W  
PDOP: 1.9  
ELEV: 4676'  
1/4, 1/4: SW1/4SE1/4

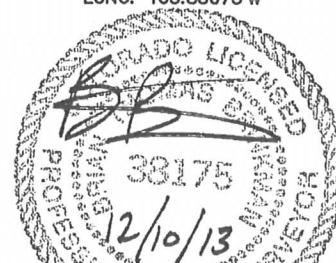
## BOTTOM HOLE

LAT: 40.78684N  
LONG: 103.83075W

## LEGEND

- = ALIQUOT MONUMENT AS DESCRIBED  
○ = CALCULATED POSITION

Brian T. Brinkman, On behalf of Lat40°, Inc.  
Colorado Licensed Professional Land Surveyor No. 38175  
DATE: 12/10/2013  
PROJECT#: 2013115

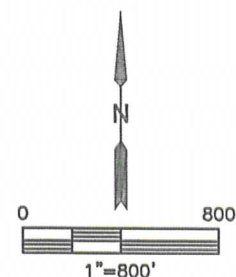
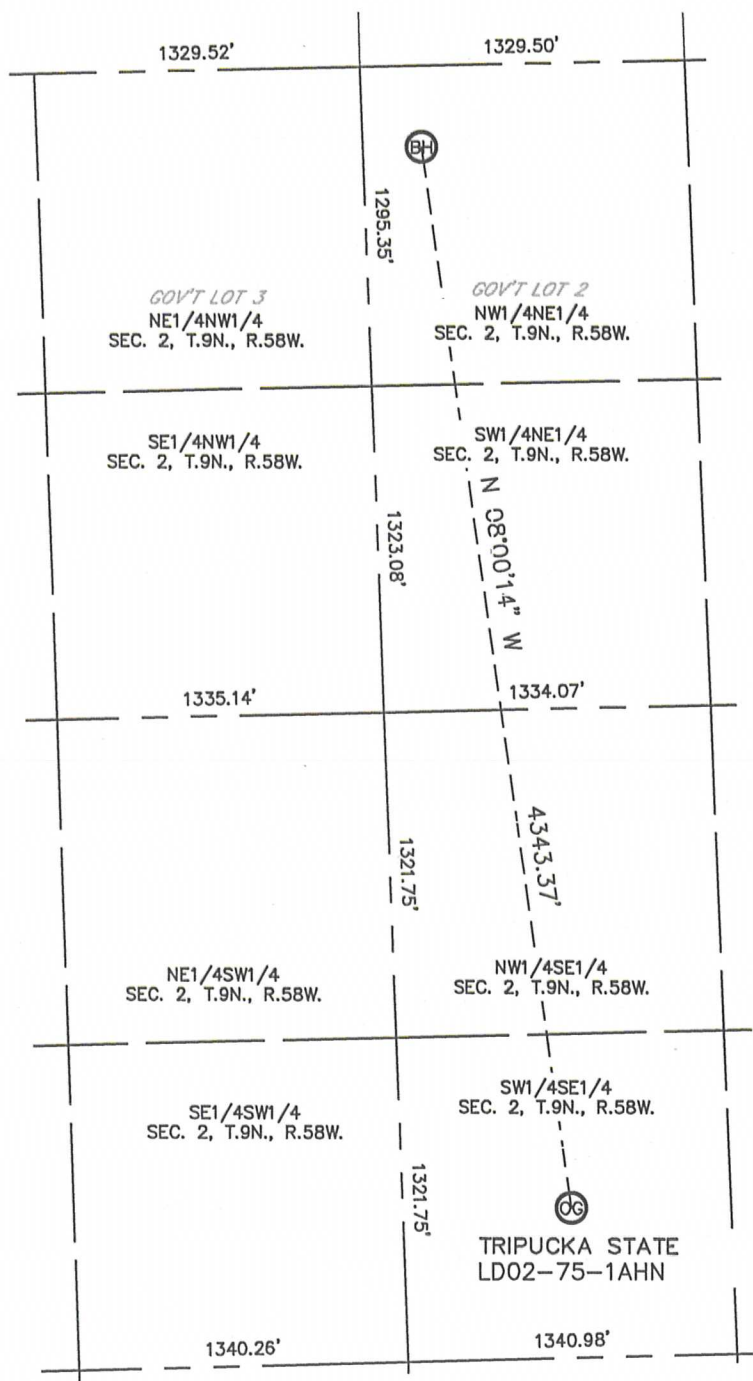




# SITE SKETCH

TRIPUCKA STATE LD02-75-1AHN

SECTION: 2  
TOWNSHIP: 9N  
RANGE: 58W



NOTE: NO EXISTING WELLS ADJACENT TO PROPOSED WELL BORE.



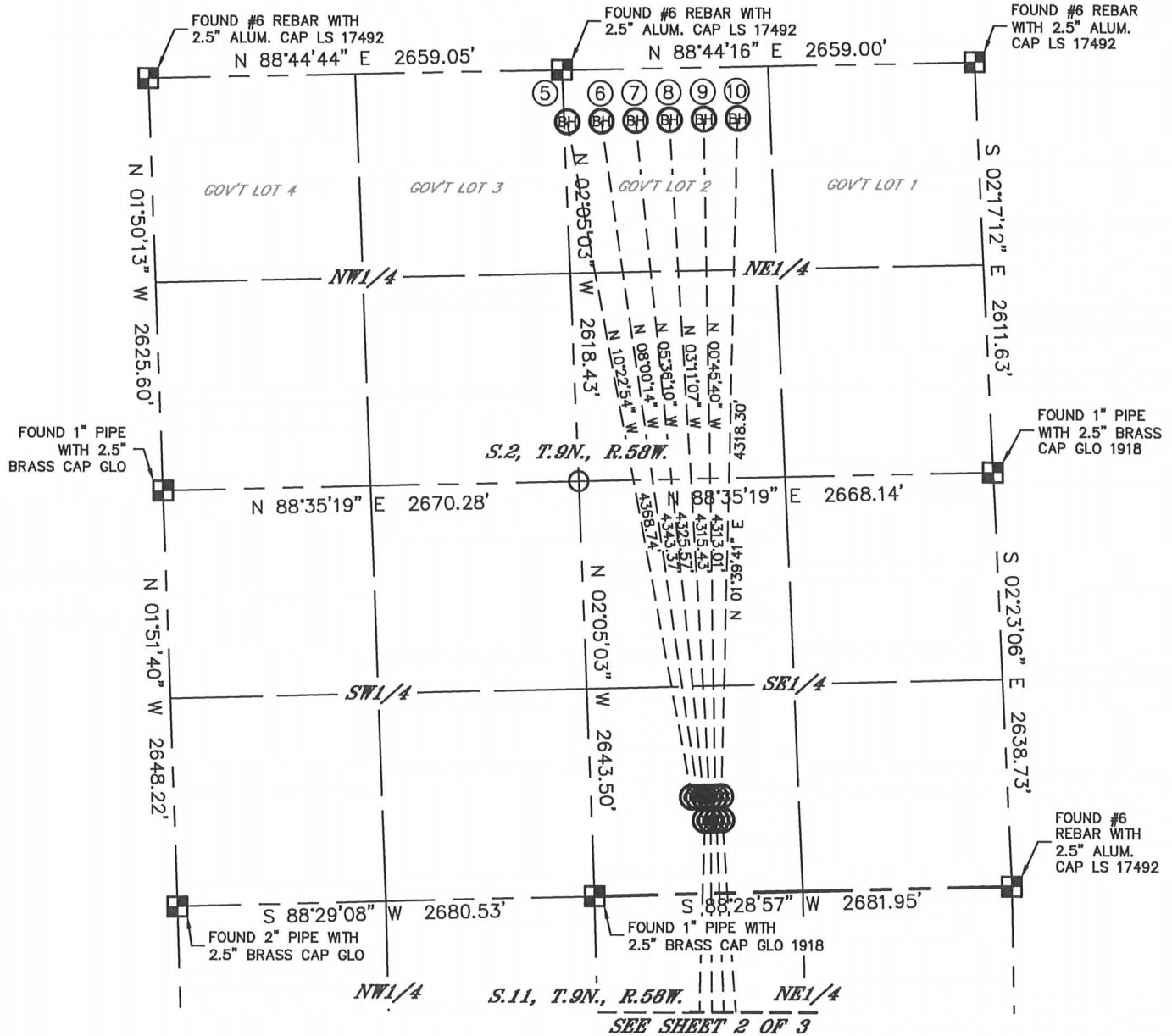
Lat40°, Inc. 1635 Foxtrail Drive, Suite 325 Loveland, CO 970-776-3321

## MULTI-WELL PLAN

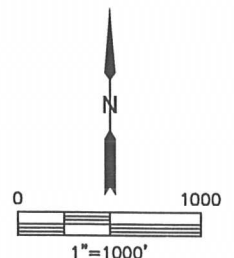
LITTLE STATE LD11-75-1BHN PAD

THIS MAP DOES NOT REPRESENT A BOUNDARY SURVEY

SECTION: 2  
TOWNSHIP: 9N  
RANGE: 58W



#	WELL NAME	BHL FOOTAGE	BHL LAT °	BHL LONG °	1/4/1/4
1	LITTLE STATE LD11-75-1BHN	330 FSL 2200 FEL	40.75971	-103.82967	SWSE
2	LITTLE STATE LD11-74HN	330 FSL 1980 FEL	40.75972	-103.82887	SWSE
3	LITTLE STATE LD11-74-1AHN	330 FSL 1760 FEL	40.75973	-103.82808	SWSE
4	LITTLE STATE LD11-74-1BHN	330 FSL 1540 FEL	40.75974	-103.82729	SWSE
5	TRIPUCKA STATE LD02-75HN	330 FNL 2640 FEL	40.78684	-103.83154	NWNE
6	TRIPUCKA STATE LD02-75-1AHN	330 FNL 2420 FEL	40.78684	-103.83075	NWNE
7	TRIPUCKA STATE LD02-75-1BHN	330 FNL 2200 FEL	40.78685	-103.82995	NWNE
8	TRIPUCKA STATE LD02-74HN	330 FNL 1980 FEL	40.78685	-103.82916	NWNE
9	TRIPUCKA STATE LD02-74-1AHN	330 FNL 1760 FEL	40.78685	-103.82836	NWNE
10	TRIPUCKA STATE LD02-74-1BHN	330 FNL 1540 FEL	40.78685	-103.82757	NWNE



SHEET 1 OF 3

DATE: 12/13/2013  
PROJECT#: 2013115