

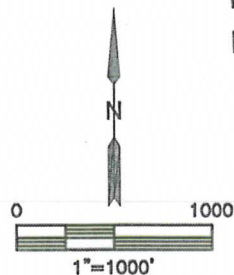
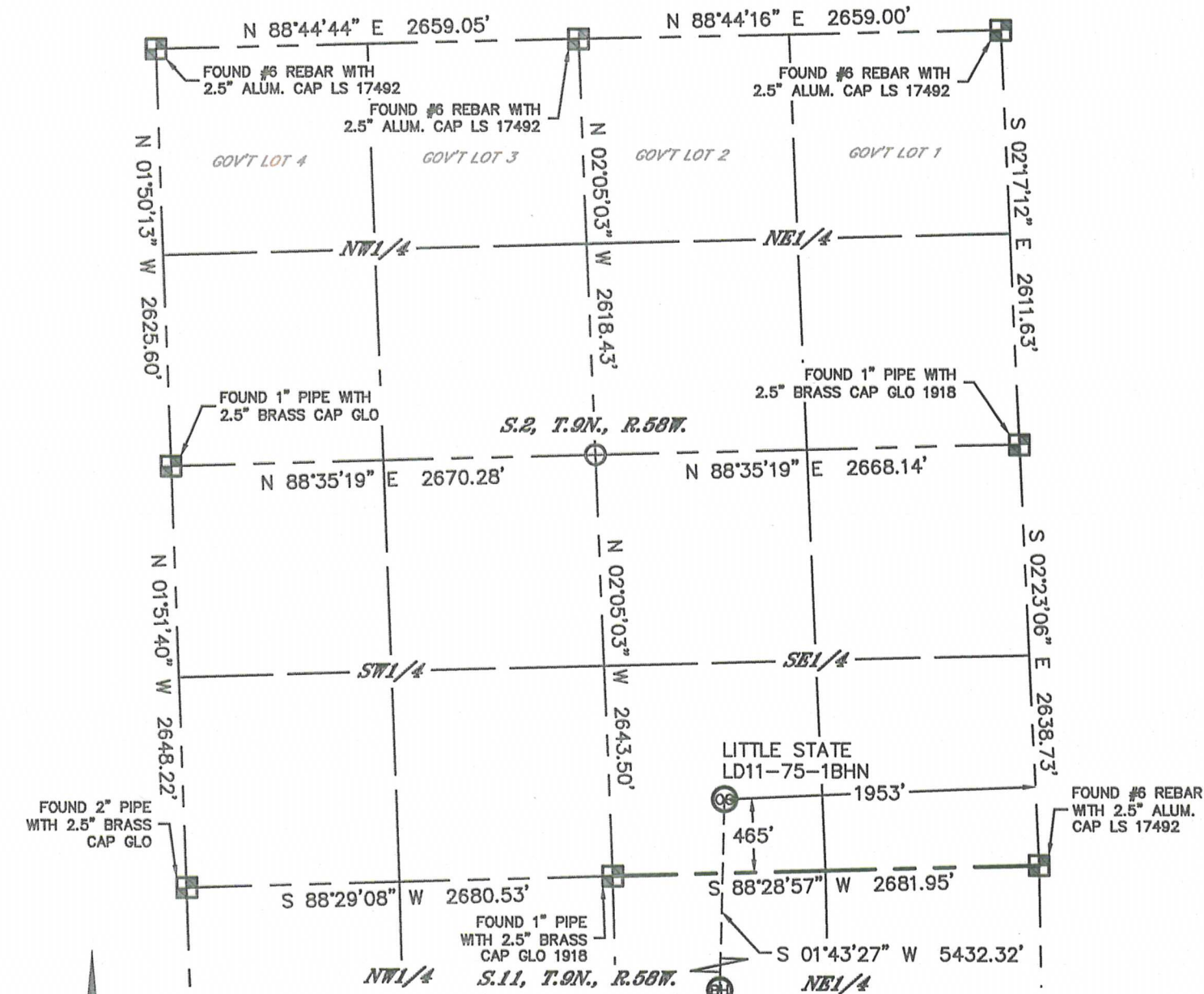


Lat40°, Inc. 1635 Foxtrail Drive, Suite 325 Loveland, CO 970-776-3321

WELL LOCATION CERTIFICATE

THIS MAP DOES NOT REPRESENT A BOUNDARY SURVEY

SECTION: 2
TOWNSHIP: 9N
RANGE: 58W



In accordance with a request from Cody Ball with Noble Energy Inc. Lat40°, Inc. has determined the surface location of the LITTLE STATE LD11-75-1BHN to be 465' from the SOUTH line and 1953' from the EAST line as measured at right angles from the section lines of Section 2, Township 9 North, Range 58 West and the bottom hole to be 330' from the SOUTH line and 2200' from the EAST line as measured at right angles from the section lines of Section 11, Township 9 North, Range 58 West of the Sixth Principal Meridian, County of Weld, State of Colorado.

I hereby state that this Well Location Certificate was prepared by me, or under my direct supervision, that the fieldwork was completed on 9/6/2013, for and on behalf of Noble Energy Inc. That this is not a Land Survey Plat or an Improvement Survey Plat, and that it is not to be relied upon for establishment of fence, building, or other future Improvement lines.

NOTE:

- 1) Bearings shown are Grid Bearings of the Colorado State Plane Coordinate System, North Zone, North American Datum 1983/2007. The lineal dimensions as contained herein are based upon the "U.S. Survey Foot."
 - 2) Ground elevations are based on an observed GPS elevation (NAVD 1988 DATUM).
 - 3) IMPROVEMENTS: See LOCATION DRAWING for all visible improvements within 500' of disturbed area.
 - 4) SURFACE USE: RANGELAND
 - 5) INSTRUMENT OPERATOR: BRIAN ROTTINGHAUS
 - 6) NEAREST EXISTING WELL: NO EX. WELLS IN SECTION
- NEAREST CULTURAL ITEMS:
BUILDING: 515' SW
BUILDING UNIT: 4083' SW
HIGH OCCUPANCY BUILDING UNIT: 5280'+
DESIGNATED OUTSIDE ACTIVITY AREA: 5280'+
PUBLIC ROAD: 5280'+
ABOVEGROUND UTILITY: 4102' SW
RAILROAD: 5280'+
PROPERTY LINE: 465' S

SURFACE LOCATION

LAT: 40.77460N
LONG: 103.82871W
PDOP: 1.5
ELEV: 4677'
1/4, 1/4: SW1/4SE1/4

BOTTOM HOLE

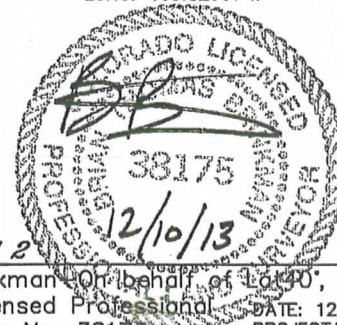
LAT: 40.75971N
LONG: 103.82967W

LEGEND

- = ALIQUOT MONUMENT AS DESCRIBED
○ = CALCULATED POSITION

SHEET 1 OF 2

Brian T. Brinkman, On behalf of Lat40°, Inc.
Colorado Licensed Professional Land Surveyor No. 38175
DATE: 12/10/2013
PROJECT#: 2013115

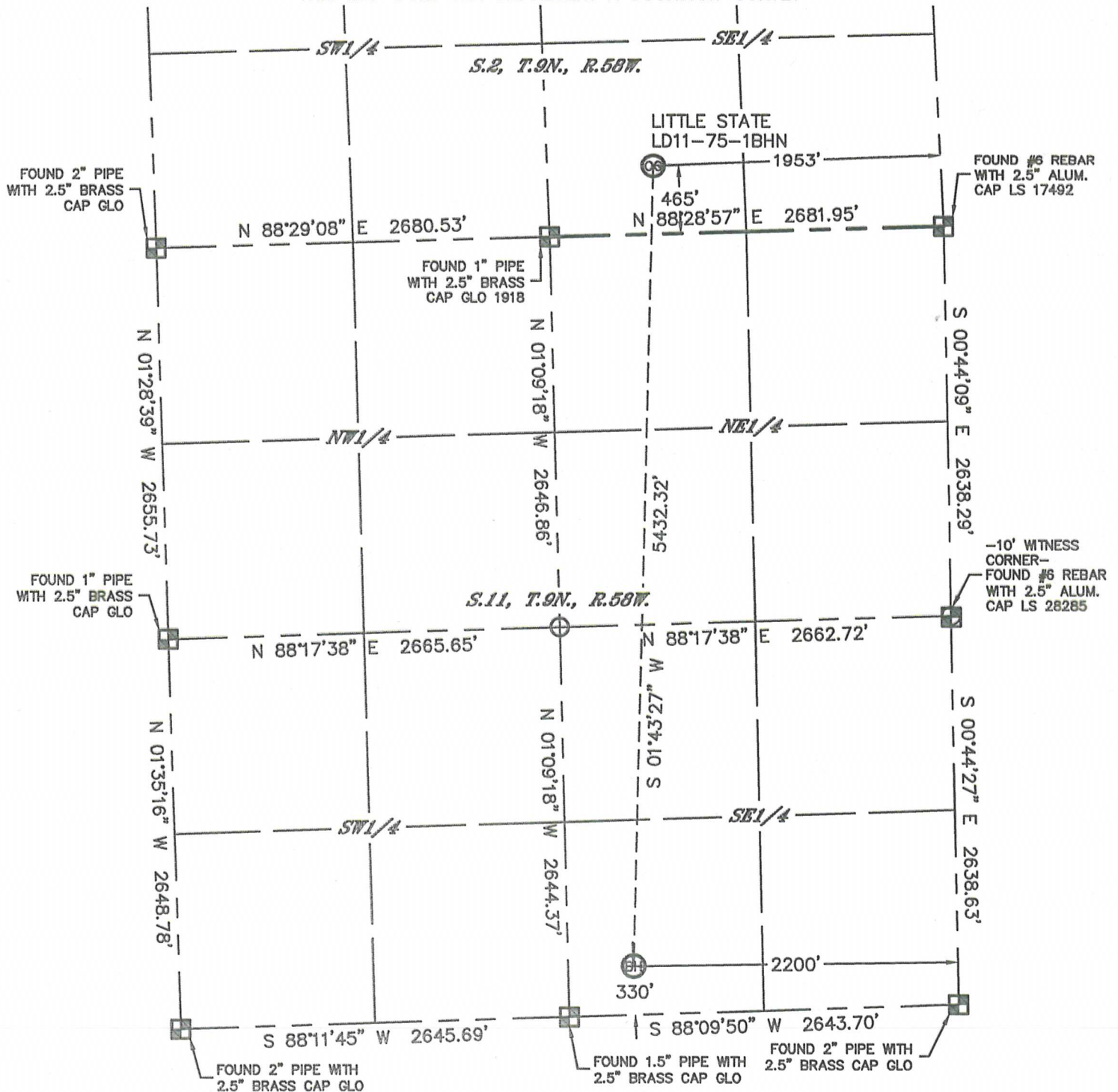




WELL LOCATION CERTIFICATE

SECTION: 2
TOWNSHIP: 9N
RANGE: 58W

THIS MAP DOES NOT REPRESENT A BOUNDARY SURVEY

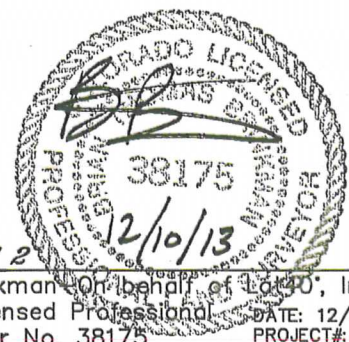


LEGEND

- = ALIQUOT MONUMENT AS DESCRIBED
- = CALCULATED POSITION

SHEET 2 OF 2

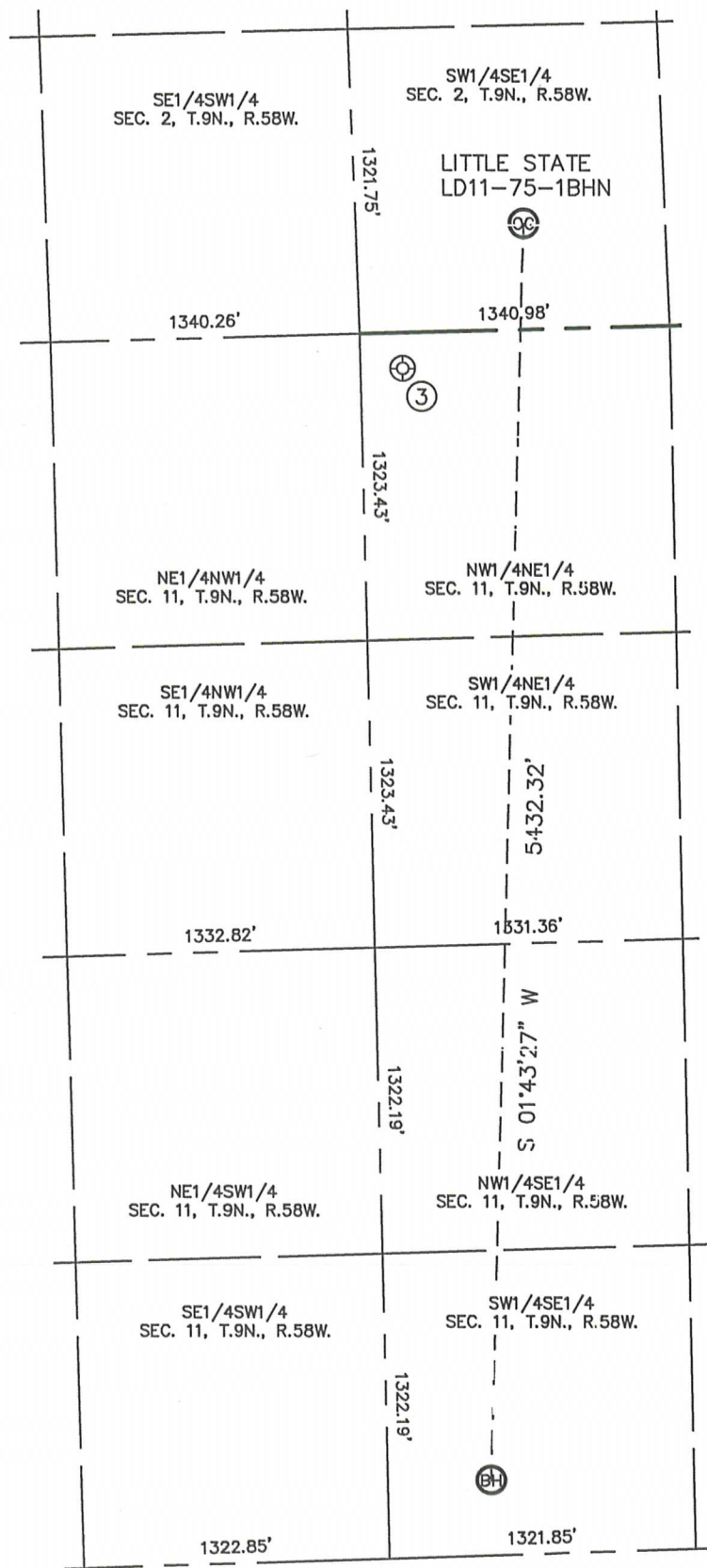
Brian T. Brinkman, On behalf of Lat40°, Inc.
Colorado Licensed Professional Land Surveyor No. 38175
DATE: 12/10/2013
PROJECT#: 2013115





SITE SKETCH

LITTLE STATE LD11-75-1BHN

SECTION: 2
TOWNSHIP: 9N
RANGE: 58W

WELL NO.	WELL NAME	SHL FOOTAGE				SHL LAT°	SHL LONG°	PDOP	ELEV (FT.)	1/4/1/4
3	CASTOR LD11-75HN	154	FNL	2499	FEL	40.77289	-103.83064	2.6	4698	NWNE