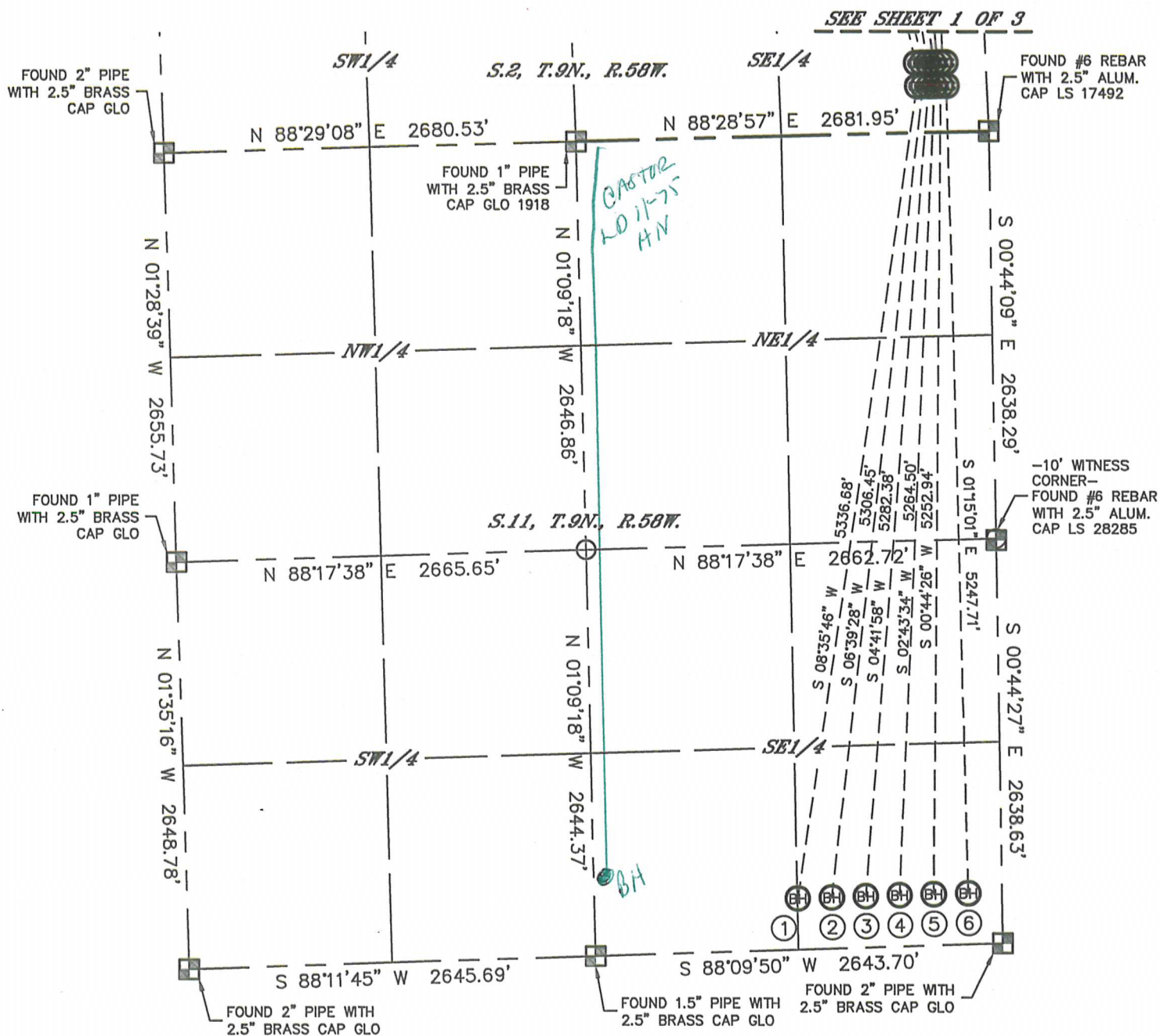
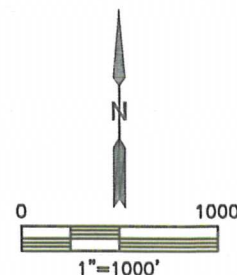


MULTI-WELL PLAN  
GRADISHAR STATE LD11-73HN PAD  
THIS MAP DOES NOT REPRESENT A BOUNDARY SURVEY

SECTION: 2  
TOWNSHIP: 9N  
RANGE: 58W



#	WELL NAME	BHL FOOTAGE				BHL LAT °	BHL LONG °	1/4/1/4
1	GRADISHAR STATE LD11-73HN	330	FSL	1320	FEL	40.75975	-103.82649	SESE
2	GRADISHAR STATE LD11-73-1AHN	330	FSL	1100	FEL	40.75975	-103.82570	SESE
3	GRADISHAR STATE LD11-73-1BHN	330	FSL	880	FEL	40.75976	-103.82490	SESE
4	GRADISHAR STATE LD11-72HN	330	FSL	660	FEL	40.75977	-103.82411	SESE
5	GRADISHAR STATE LD11-72-1AHN	330	FSL	440	FEL	40.75978	-103.82332	SESE
6	GRADISHAR STATE LD11-72-1BHN	330	FSL	220	FEL	40.75979	-103.82252	SESE
7	DAVIS STATE LD02-73HN	330	FNL	1320	FEL	40.78685	-103.82678	NENE
8	DAVIS STATE LD02-73-1AHN	330	FNL	1100	FEL	40.78686	-103.82598	NENE
9	DAVIS STATE LD02-73-1BHN	330	FNL	880	FEL	40.78686	-103.82519	NENE
10	DAVIS STATE LD02-72HN	330	FNL	660	FEL	40.78686	-103.82439	NENE
11	DAVIS STATE LD02-72-1AHN	330	FNL	440	FEL	40.78686	-103.82360	NENE
12	DAVIS STATE LD02-72-1BHN	330	FNL	220	FEL	40.78686	-103.82280	NENE



*SHEET 2 OF 3*

DATE: 12/12/2013  
PROJECT#: 2013115

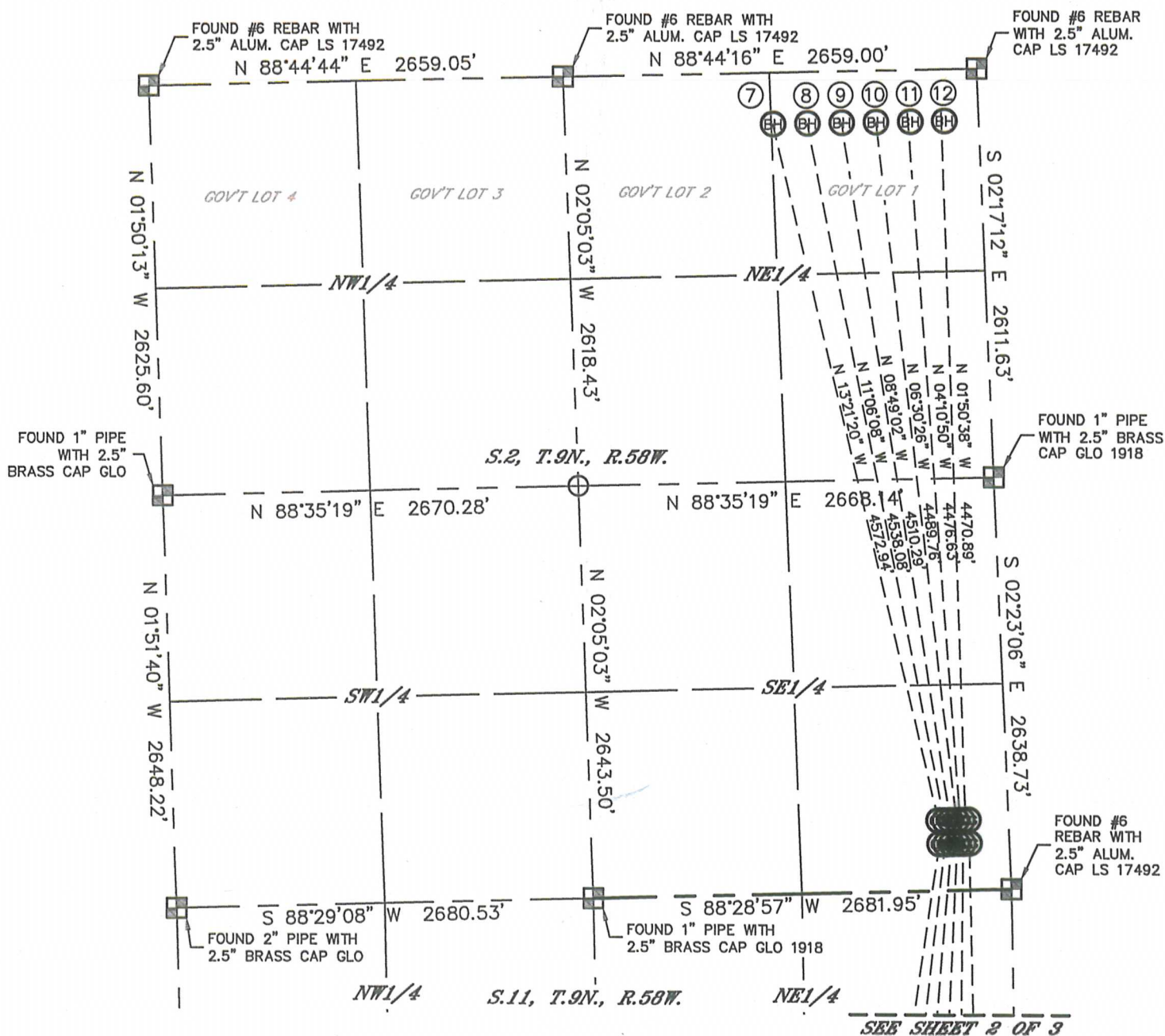


# MULTI-WELL PLAN

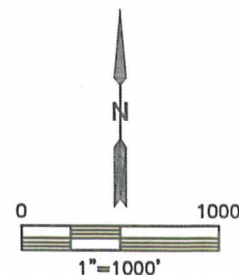
## GRADISHAR STATE LD11-73HN PAD

THIS MAP DOES NOT REPRESENT A BOUNDARY SURVEY

SECTION: 2  
TOWNSHIP: 9N  
RANGE: 58W



#	WELL NAME	BHL FOOTAGE			BHL LAT °	BHL LONG °	1/4/1/4
1	GRADISHAR STATE LD11-73HN	330	FSL	1320	FEL	40.75975	-103.82649 SESE
2	GRADISHAR STATE LD11-73-1AHN	330	FSL	1100	FEL	40.75975	-103.82570 SESE
3	GRADISHAR STATE LD11-73-1BHN	330	FSL	880	FEL	40.75976	-103.82490 SESE
4	GRADISHAR STATE LD11-72HN	330	FSL	660	FEL	40.75977	-103.82411 SESE
5	GRADISHAR STATE LD11-72-1AHN	330	FSL	440	FEL	40.75978	-103.82332 SESE
6	GRADISHAR STATE LD11-72-1BHN	330	FSL	220	FEL	40.75979	-103.82252 SESE
7	DAVIS STATE LD02-73HN	330	FNL	1320	FEL	40.78685	-103.82678 NENE
8	DAVIS STATE LD02-73-1AHN	330	FNL	1100	FEL	40.78686	-103.82598 NENE
9	DAVIS STATE LD02-73-1BHN	330	FNL	880	FEL	40.78686	-103.82519 NENE
10	DAVIS STATE LD02-72HN	330	FNL	660	FEL	40.78686	-103.82439 NENE
11	DAVIS STATE LD02-72-1AHN	330	FNL	440	FEL	40.78686	-103.82360 NENE
12	DAVIS STATE LD02-72-1BHN	330	FNL	220	FEL	40.78686	-103.82280 NENE



SHEET 1 OF 3

DATE: 12/12/2013  
PROJECT#: 2013115



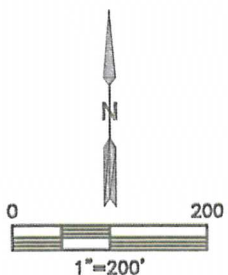
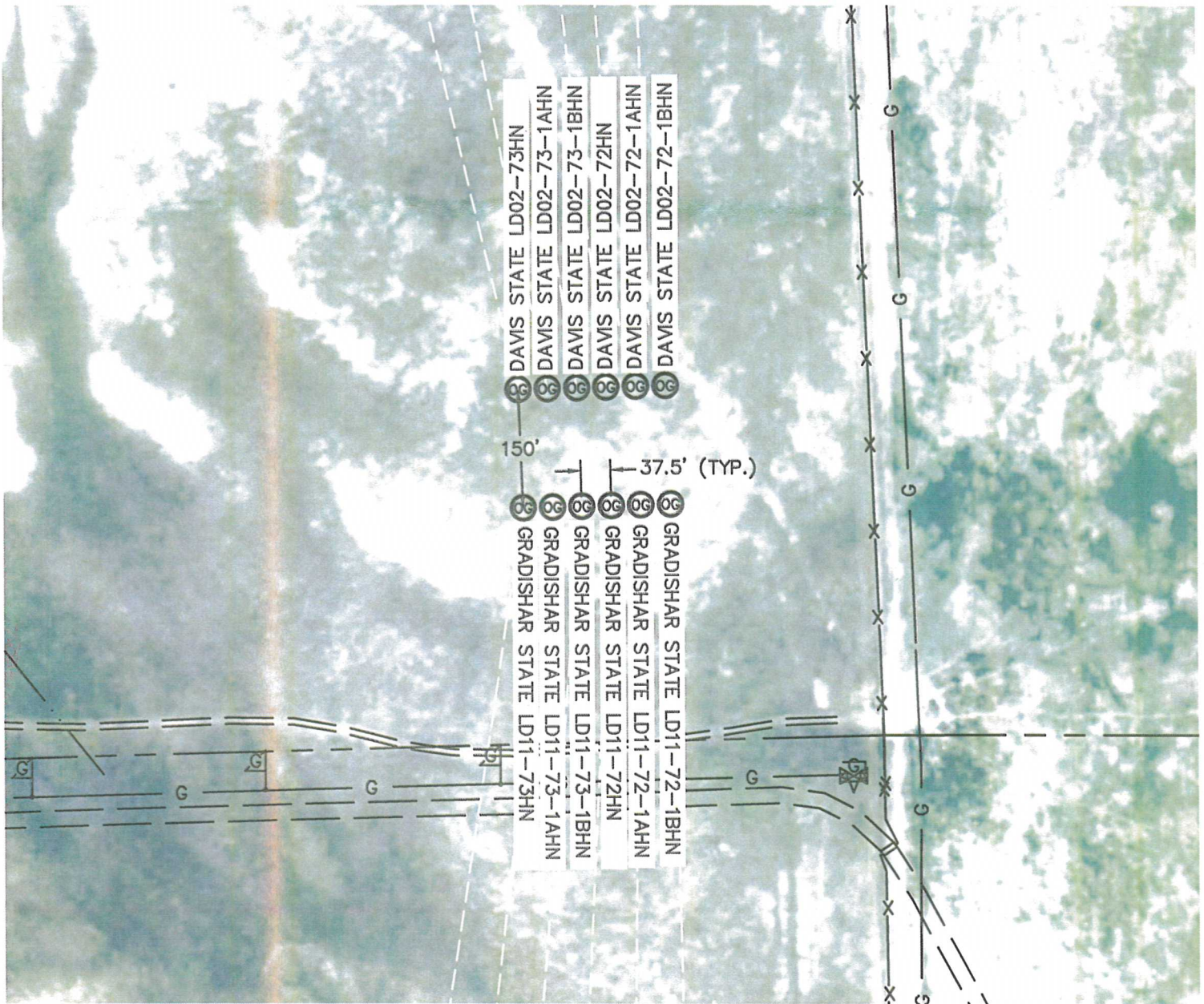


Lat40°, Inc. 1635 Foxtrail Drive, Suite 325 Loveland, CO 970-776-3321

# MULTI-WELL PLAN

GRADISHAR STATE LD11-73HN PAD

SECTION: 2  
TOWNSHIP: 9N  
RANGE: 58W



**SHEET 3 OF 3**

DATE: 12/12/2013  
PROJECT#: 2013115