

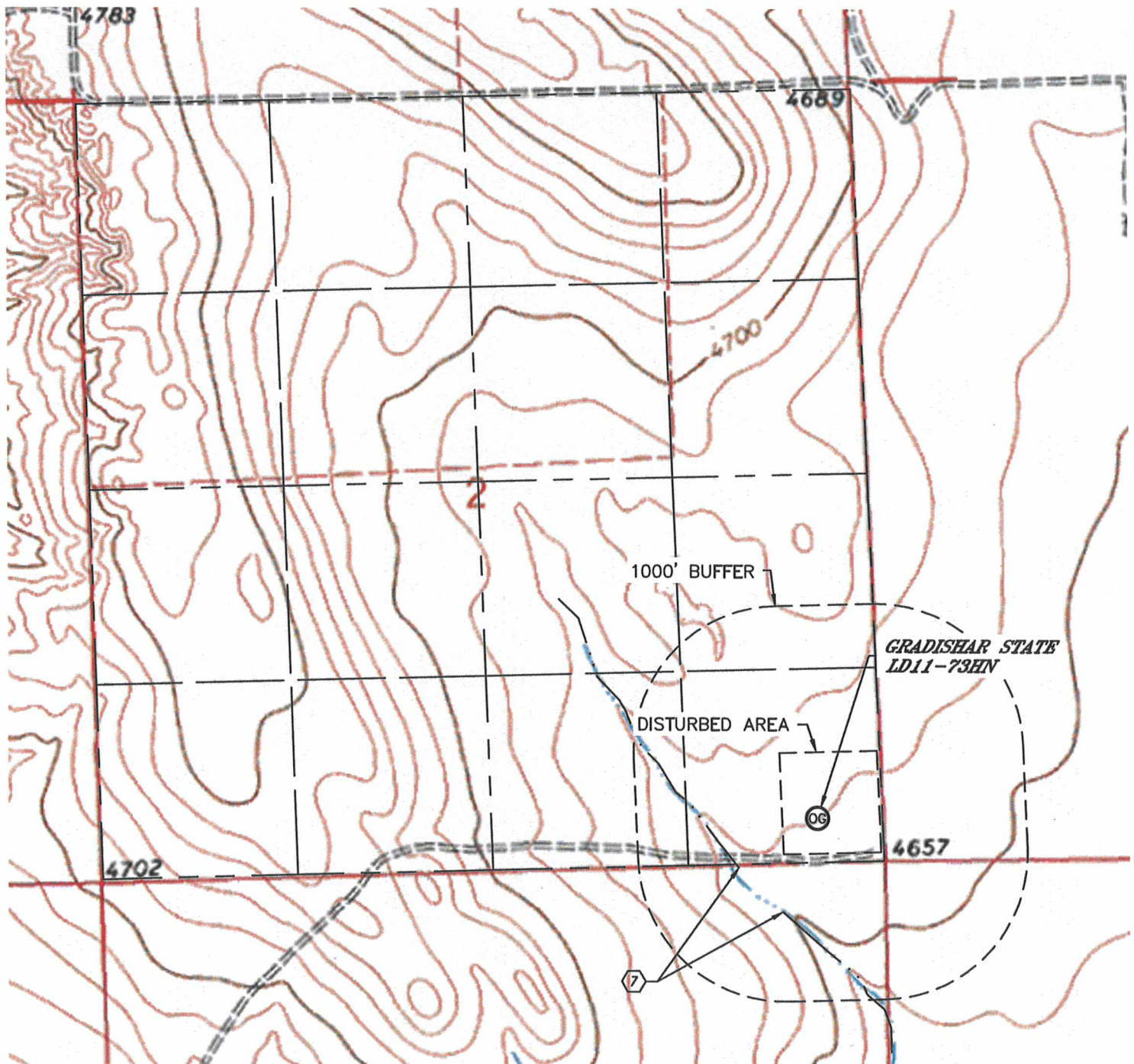


Lat40°, Inc. 1635 Foxtrail Drive, Suite 325 Loveland, CO 970-776-3321

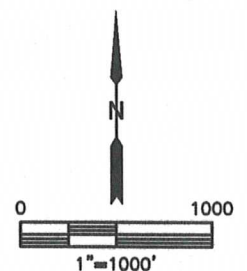
HYDROLOGY MAP

GRADISHAR STATE LD11-73HN PAD

SECTION: 2
TOWNSHIP: 9N
RANGE: 58W



⑦ SWALE 633' & 680' SW



DATE: 12/12/2013
PROJECT#: 2013115