

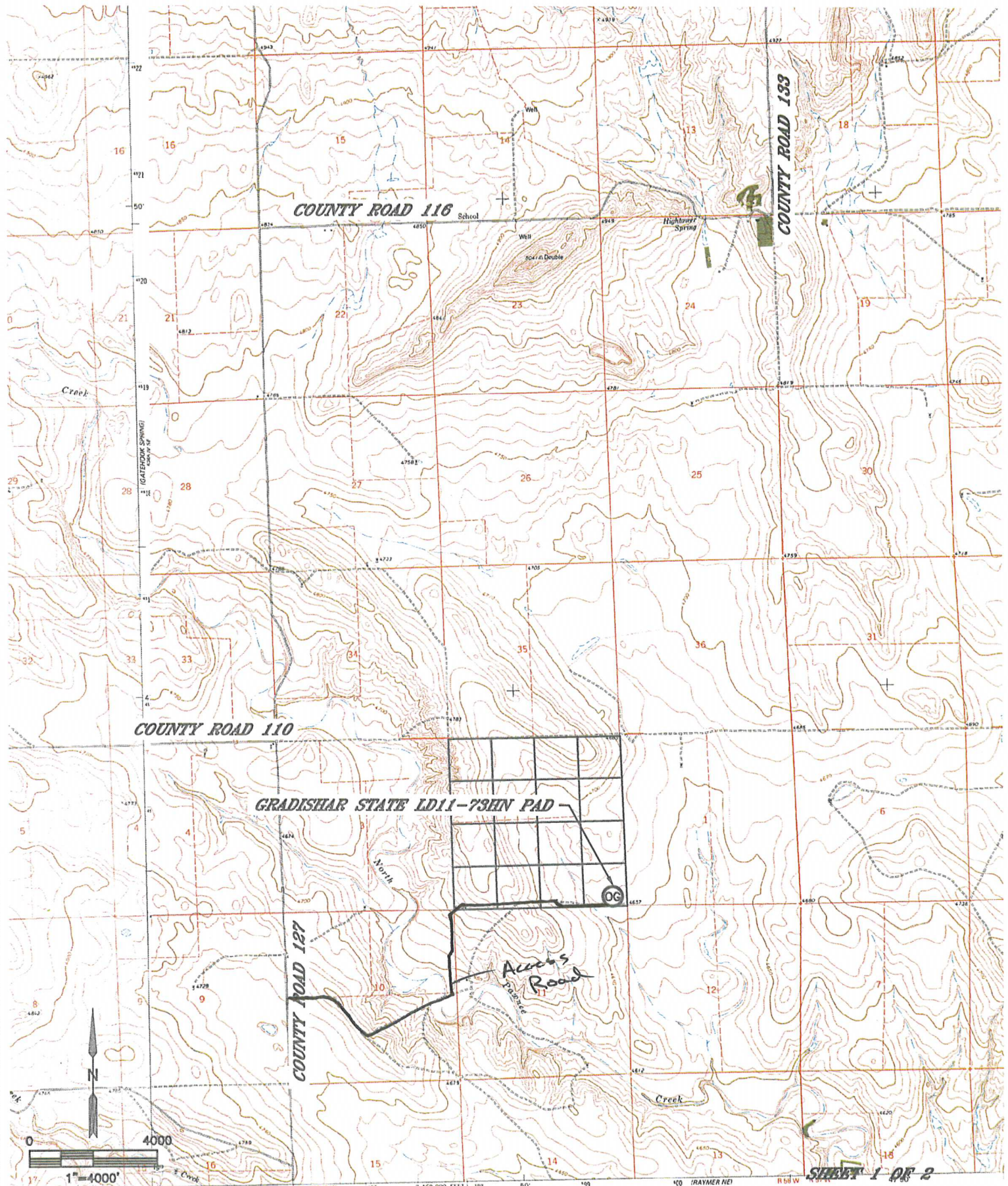


Lat40°, Inc. 1635 Foxtrail Drive, Suite 325 Loveland, CO 970-776-3321

ACCESS ROAD MAP

GRADISHAR STATE LD11-73HN PAD

SECTION: 2
TOWNSHIP: 9N
RANGE: 58W



SHEET 1 OF 2

DATE: 12/12/2013
PROJECT#: 2013115



ACCESS ROAD MAP

GRADISHAR STATE LD11-73HN PAD

SECTION: 2
TOWNSHIP: 9N
RANGE: 58W

