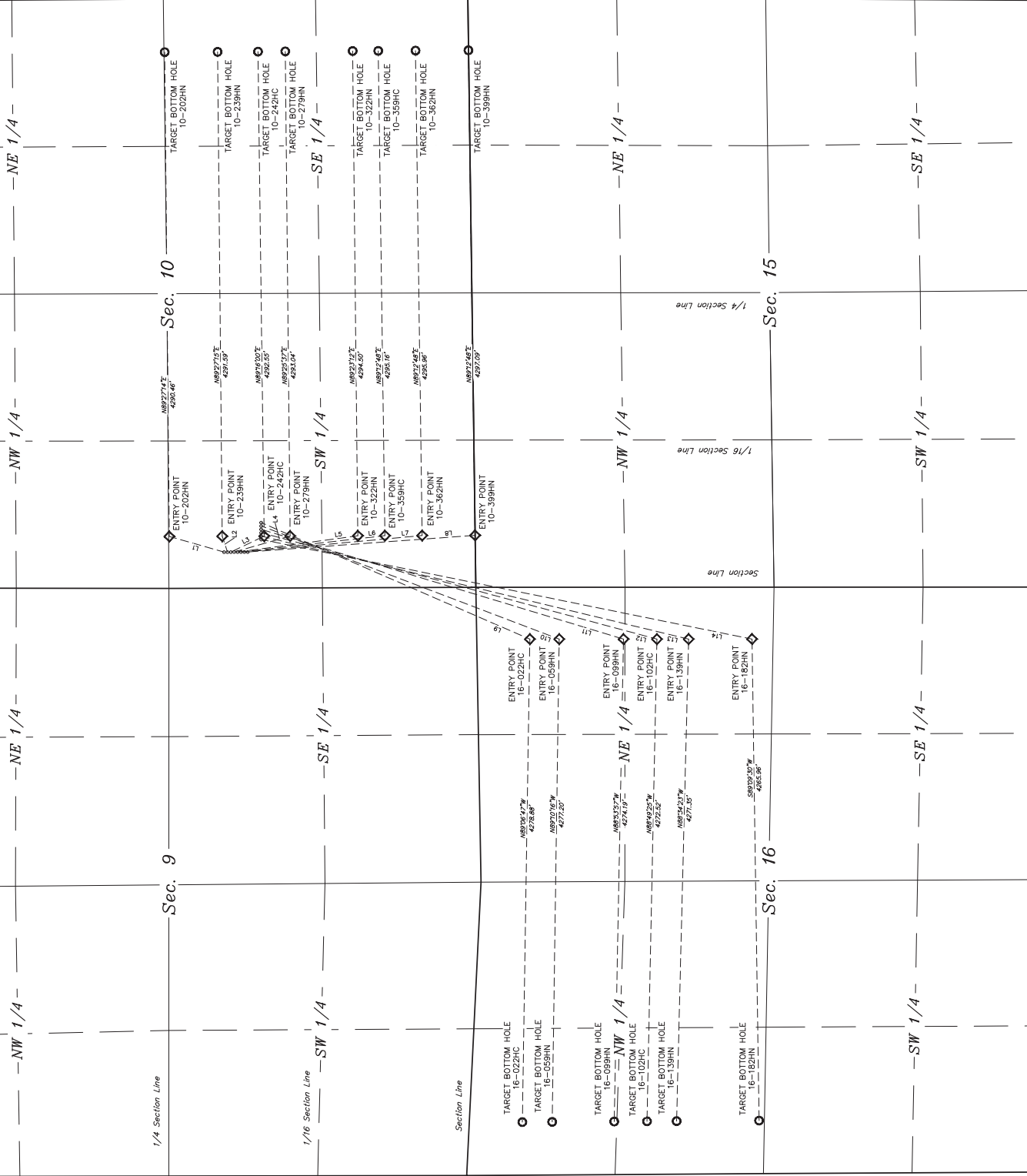




- WELHEAD
- ENTRY POINT
- TARGET BOTTOM HOLE



LINE	DIRECTION	LENGTH
L1	N55.51°E	504.94
L2	N73.52°E	17.41
L3	S29.59°E	327.13
L4	S95.93°E	515.08
L5	S07°44'00"E	1074.82
L6	S08°28'32"E	1283.33
L7	S05°17'21"E	1581.99
L8	S04°11'07"E	2019.98
L9	S23°27'17"W	2594.98
L10	S20°47'43"W	2824.50
L11	S18°51'15"W	3354.62
L12	S15°02'43"W	3630.92
L13	S13°32'47"W	3895.76
L14	S11°28'07"W	4437.80



GREAT WESTERN OIL & GAS COMPANY  
DETTENNE ED 16-022HC, 16-099HN, 16-099HN, 16-102HC,  
16-139HN, 16-182HN, A, 16-399HN, 10-362HN, 10-359HC,  
10-322HN, 10-279HN, 10-242HC, 10-239HN & 10-202HN  
SECTION 10, 16N, 16E7N, 64E P.M.  
NW 1/4 SW 1/4

DRAWN BY: J.A.W. DATE DRAWN: 08-22-14  
SCALE: 1" = 600' REVISED: 04/06/00

MULTI-WELL PLAN FIGURE #6