

MINERAL RESOURCES, INC.

Location	Windsor	Slot	Slot #46
Field	Wattenberg	Well	GP-JEvans #3-19-19
Installation	Mineral Resources MRI	Wellbore	GP-JEvans #3-19-19 (PWB)

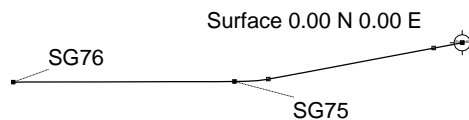
Scale 1 cm = 800 ft

East (feet) ->

-11200 -9600 -8000 -6400 -4800 -3200 -1600 0 1600

WELL PROFILE DATA

Point	MD	Inc	Azi	TVD	North	East	deg/100ft	V. Sect
Tie on	0.00	0.00	0.00	0.00	0.00	0.00	0.00	-0.00
KOP	550.00	0.00	0.00	550.00	0.00	0.00	0.00	-0.00
End of Build	2387.22	36.74	259.37	2263.85	-104.95	-559.44	2.00	566.46
End of Hold	7902.48	36.74	259.37	6683.29	-713.34	-3802.35	0.00	3850.08
Target SG75	8673.43	90.00	269.86	7017.24	-760.32	-4464.15	7.00	4513.46
T.D. & Target SG76	13012.31	90.00	269.86	7017.24	-770.86	-8803.02	0.00	8836.70



1600

North(feet)

0

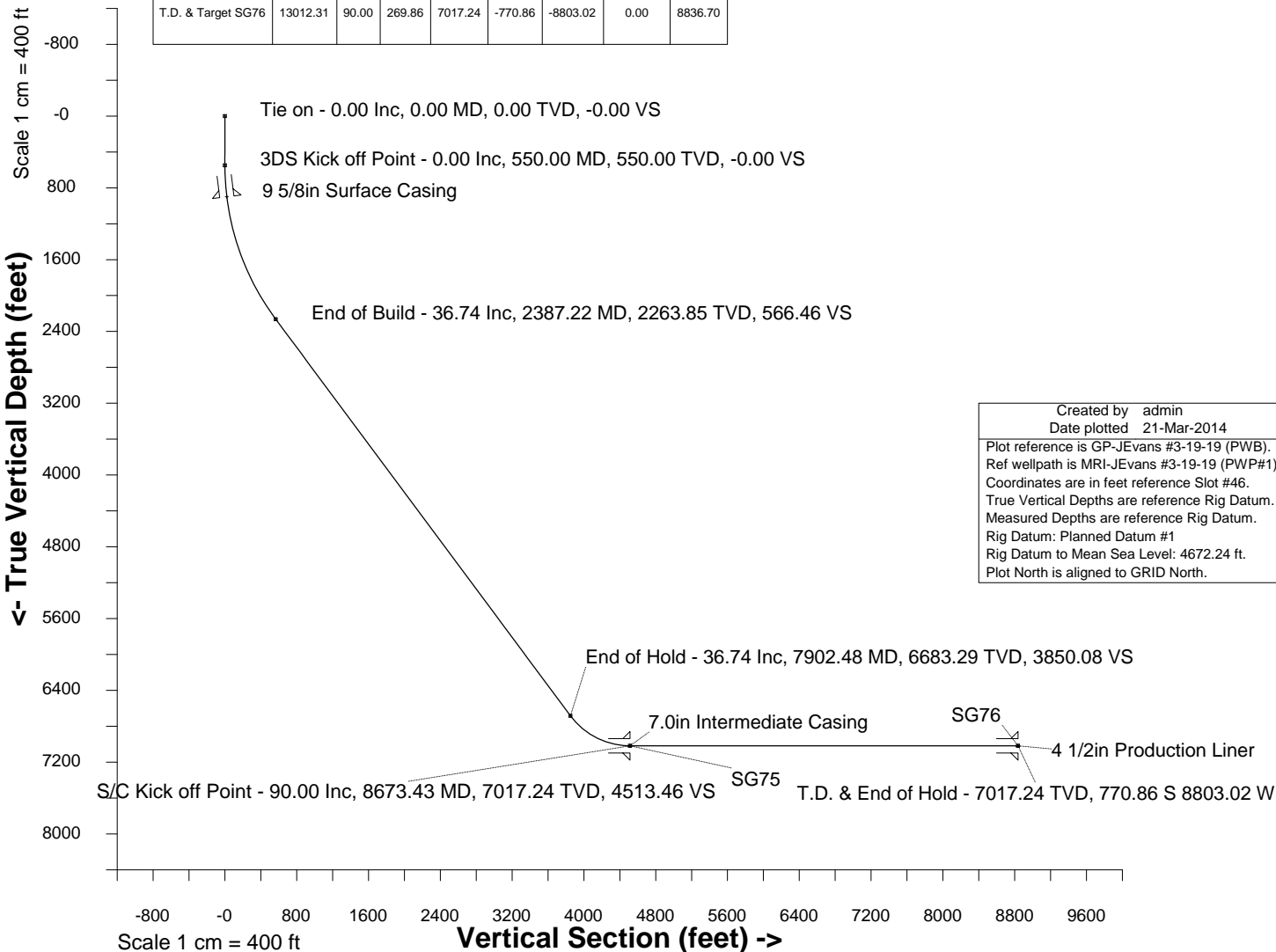
-1600

-3200

Scale 1 cm = 800 ft

Scale 1 cm = 400 ft

True Vertical Depth (feet)



Created by admin
Date plotted 21-Mar-2014

Plot reference is GP-JEvans #3-19-19 (PWB).
Ref wellpath is MRI-JEvans #3-19-19 (PWP#1).
Coordinates are in feet reference Slot #46.
True Vertical Depths are reference Rig Datum.
Measured Depths are reference Rig Datum.
Rig Datum: Planned Datum #1
Rig Datum to Mean Sea Level: 4672.24 ft.
Plot North is aligned to GRID North.



INTEGRATED PETROLEUM TECHNOLOGIES, INC
SYSDRILL
Well Design Combined Report
Wellbore: GP-JEvans #3-19-19 (PWB)

Wellhead Details							
Name	Northing	Easting	Latitude	Longitude	North	East	Elevation Above Inst.
Slot #46	1386058.7050	3227710.0010	40.39025156	-104.68250621	436.46S	376.56W	0.24

Declination			
Date	Source	Time	
22-Jan-2013	IGRF Model [1900.0-2015.0]	09:44	
18-Sep-2013	IGRF Model [1900.0-2015.0]	10:23	

Site Details				
Name	Northing	Easting	Coord System Name	North Alignment
Mineral Resources MRI	1386495.1419	3228086.5450	CO83-NF on NORTH AMERICAN DATUM 1983 datum	Grid

Summary Wellpath									
MD[ft]	Inc[deg]	Azi[deg]	TVD[ft]	North[ft]	East[ft]	Dogleg [deg/100ft]	Vertical Section[ft]	Northing	Easting
0.00	0.00	0.000	0.00	0.00N	0.00E		0.00	1386058.71	3227710.00
550.00	0.00	0.000	550.00	0.00N	0.00E	==>	0.00	1386058.71	3227710.00
2387.22	36.74	259.370	2263.85	104.95S	559.44W	2.00	566.46	1385953.76	3227150.58
7902.48	36.74	259.370	6683.29	713.34S	3802.35W	==>	3850.08	1385345.40	3223907.81
8673.43	90.00	269.860	7017.24	760.32S	4464.15W	7.00	4513.46	1385298.42	3223246.04
13012.31	90.00	269.860	7017.24	770.86S	8803.02W	==>	8836.70	1385287.88	3218907.36

Interpolated Wellpath									
MD[ft]	Inc[deg]	Azi[deg]	TVD[ft]	North[ft]	East[ft]	Dogleg [deg/100ft]	Vertical Section[ft]	Northing	Easting
0.00	0.00	0.000	0.00	0.00N	0.00E		0.00	1386058.71	3227710.00
100.00	0.00	0.000	100.00	0.00N	0.00E	==>	0.00	1386058.71	3227710.00
200.00	0.00	0.000	200.00	0.00N	0.00E	==>	0.00	1386058.71	3227710.00
300.00	0.00	0.000	300.00	0.00N	0.00E	==>	0.00	1386058.71	3227710.00
400.00	0.00	0.000	400.00	0.00N	0.00E	==>	0.00	1386058.71	3227710.00
500.00	0.00	0.000	500.00	0.00N	0.00E	==>	0.00	1386058.71	3227710.00
550.00	0.00	0.000	550.00	0.00N	0.00E	==>	0.00	1386058.71	3227710.00
650.00	2.00	259.370	649.98	0.32S	1.72W	2.00	1.74	1386058.38	3227708.29
750.00	4.00	259.370	749.84	1.29S	6.86W	2.00	6.94	1386057.42	3227703.14
850.00	6.00	259.370	849.45	2.89S	15.42W	2.00	15.62	1386055.81	3227694.58
950.00	8.00	259.370	948.70	5.14S	27.40W	2.00	27.75	1386053.56	3227682.60
1050.00	10.00	259.370	1047.47	8.03S	42.78W	2.00	43.31	1386050.68	3227667.23
1150.00	12.00	259.370	1145.62	11.54S	61.53W	2.00	62.30	1386047.16	3227648.47
1250.00	14.00	259.370	1243.06	15.69S	83.64W	2.00	84.69	1386043.01	3227626.37
1350.00	16.00	259.370	1339.64	20.46S	109.07W	2.00	110.44	1386038.24	3227600.93
1450.00	18.00	259.370	1435.27	25.85S	137.81W	2.00	139.54	1386032.85	3227572.20
1550.00	20.00	259.370	1529.82	31.86S	169.81W	2.00	171.94	1386026.85	3227540.20
1650.00	22.00	259.370	1623.17	38.46S	205.03W	2.00	207.60	1386020.24	3227504.98
1750.00	24.00	259.370	1715.21	45.67S	243.43W	2.00	246.48	1386013.04	3227466.58
1850.00	26.00	259.370	1805.84	53.46S	284.96W	2.00	288.54	1386005.25	3227425.05
1950.00	28.00	259.370	1894.94	61.83S	329.58W	2.00	333.72	1385996.88	3227380.43
2050.00	30.00	259.370	1982.39	70.77S	377.23W	2.00	381.96	1385987.94	3227332.79
2150.00	32.00	259.370	2068.11	80.27S	427.85W	2.00	433.22	1385978.44	3227282.17
2250.00	34.00	259.370	2151.97	90.31S	481.37W	2.00	487.42	1385968.40	3227228.65
2350.00	36.00	259.370	2233.88	100.88S	537.74W	2.00	544.50	1385957.83	3227172.28
2387.22	36.74	259.370	2263.85	104.95S	559.44W	2.00	566.46	1385953.76	3227150.58
2400.00	36.74	259.370	2274.09	106.36S	566.95W	==>	574.07	1385952.35	3227143.07
2500.00	36.74	259.370	2354.22	117.39S	625.75W	==>	633.61	1385941.32	3227084.28
2600.00	36.74	259.370	2434.35	128.42S	684.55W	==>	693.14	1385930.29	3227025.48
2700.00	36.74	259.370	2514.48	139.46S	743.35W	==>	752.68	1385919.26	3226966.68
2800.00	36.74	259.370	2594.61	150.49S	802.15W	==>	812.22	1385908.23	3226907.89
2900.00	36.74	259.370	2674.75	161.52S	860.95W	==>	871.76	1385897.19	3226849.09
3000.00	36.74	259.370	2754.88	172.55S	919.75W	==>	931.29	1385886.16	3226790.29
3100.00	36.74	259.370	2835.01	183.58S	978.55W	==>	990.83	1385875.13	3226731.50
3200.00	36.74	259.370	2915.14	194.61S	1037.34W	==>	1050.37	1385864.10	3226672.70
3300.00	36.74	259.370	2995.27	205.64S	1096.14W	==>	1109.90	1385853.07	3226613.90
3400.00	36.74	259.370	3075.40	216.67S	1154.94W	==>	1169.44	1385842.04	3226555.11

All data is in Feet unless otherwise stated
Coordinates are from Slot MD's are from Rig and TVD's are from Rig (Planned Datum #1 4672.2ft above Mean Sea Level)
Vertical Section is from 0.00N 0.00E on azimuth 265.000 degrees
Bottom hole distance is 8836.70 Feet on azimuth 265.00 degrees from Wellhead
Calculation method uses Minimum Curvature method
Prepared by Integrated Petroleum Technologies, Inc.
Date Printed: 21-Mar-2014



INTEGRATED PETROLEUM TECHNOLOGIES, INC
SYSDRILL

Well Design Combined Report
Wellbore: GP-JEvans #3-19-19 (PWB)

Interpolated Wellpath									
MD[ft]	Inc[deg]	Azi[deg]	TVD[ft]	North[ft]	East[ft]	Dogleg [deg/100ft]	Vertical Section[ft]	Northing	Easting
3500.00	36.74	259.370	3155.53	227.70S	1213.74W	==>	1228.98	1385831.01	3226496.31
3600.00	36.74	259.370	3235.66	238.73S	1272.54W	==>	1288.51	1385819.98	3226437.51
3700.00	36.74	259.370	3315.80	249.76S	1331.34W	==>	1348.05	1385808.95	3226378.72
3800.00	36.74	259.370	3395.93	260.80S	1390.14W	==>	1407.59	1385797.92	3226319.92
3900.00	36.74	259.370	3476.06	271.83S	1448.94W	==>	1467.13	1385786.89	3226261.13
4000.00	36.74	259.370	3556.19	282.86S	1507.74W	==>	1526.66	1385775.86	3226202.33
4100.00	36.74	259.370	3636.32	293.89S	1566.53W	==>	1586.20	1385764.83	3226143.53
4200.00	36.74	259.370	3716.45	304.92S	1625.33W	==>	1645.74	1385753.80	3226084.74
4300.00	36.74	259.370	3796.58	315.95S	1684.13W	==>	1705.27	1385742.77	3226025.94
4400.00	36.74	259.370	3876.71	326.98S	1742.93W	==>	1764.81	1385731.74	3225967.14
4500.00	36.74	259.370	3956.84	338.01S	1801.73W	==>	1824.35	1385720.71	3225908.35
4600.00	36.74	259.370	4036.98	349.04S	1860.53W	==>	1883.89	1385709.68	3225849.55
4700.00	36.74	259.370	4117.11	360.07S	1919.33W	==>	1943.42	1385698.65	3225790.75
4800.00	36.74	259.370	4197.24	371.10S	1978.13W	==>	2002.96	1385687.62	3225731.96
4900.00	36.74	259.370	4277.37	382.14S	2036.93W	==>	2062.50	1385676.59	3225673.16
5000.00	36.74	259.370	4357.50	393.17S	2095.73W	==>	2122.03	1385665.56	3225614.36
5100.00	36.74	259.370	4437.63	404.20S	2154.52W	==>	2181.57	1385654.52	3225555.57
5200.00	36.74	259.370	4517.76	415.23S	2213.32W	==>	2241.11	1385643.49	3225496.77
5300.00	36.74	259.370	4597.89	426.26S	2272.12W	==>	2300.64	1385632.46	3225437.98
5400.00	36.74	259.370	4678.03	437.29S	2330.92W	==>	2360.18	1385621.43	3225379.18
5500.00	36.74	259.370	4758.16	448.32S	2389.72W	==>	2419.72	1385610.40	3225320.38
5600.00	36.74	259.370	4838.29	459.35S	2448.52W	==>	2479.26	1385599.37	3225261.59
5700.00	36.74	259.370	4918.42	470.38S	2507.32W	==>	2538.79	1385588.34	3225202.79
5800.00	36.74	259.370	4998.55	481.41S	2566.12W	==>	2598.33	1385577.31	3225143.99
5900.00	36.74	259.370	5078.68	492.44S	2624.92W	==>	2657.87	1385566.28	3225085.20
6000.00	36.74	259.370	5158.81	503.48S	2683.71W	==>	2717.40	1385555.25	3225026.40
6100.00	36.74	259.370	5238.94	514.51S	2742.51W	==>	2776.94	1385544.22	3224967.60
6200.00	36.74	259.370	5319.08	525.54S	2801.31W	==>	2836.48	1385533.19	3224908.81
6300.00	36.74	259.370	5399.21	536.57S	2860.11W	==>	2896.01	1385522.16	3224850.01
6400.00	36.74	259.370	5479.34	547.60S	2918.91W	==>	2955.55	1385511.13	3224791.21
6500.00	36.74	259.370	5559.47	558.63S	2977.71W	==>	3015.09	1385500.10	3224732.42
6600.00	36.74	259.370	5639.60	569.66S	3036.51W	==>	3074.63	1385489.07	3224673.62
6700.00	36.74	259.370	5719.73	580.69S	3095.31W	==>	3134.16	1385478.04	3224614.82
6800.00	36.74	259.370	5799.86	591.72S	3154.11W	==>	3193.70	1385467.01	3224556.03
6900.00	36.74	259.370	5879.99	602.75S	3212.90W	==>	3253.24	1385455.98	3224497.23
7000.00	36.74	259.370	5960.12	613.78S	3271.70W	==>	3312.77	1385444.95	3224438.44
7100.00	36.74	259.370	6040.26	624.82S	3330.50W	==>	3372.31	1385433.92	3224379.64
7200.00	36.74	259.370	6120.39	635.85S	3389.30W	==>	3431.85	1385422.89	3224320.84
7300.00	36.74	259.370	6200.52	646.88S	3448.10W	==>	3491.39	1385411.86	3224262.05
7400.00	36.74	259.370	6280.65	657.91S	3506.90W	==>	3550.92	1385400.82	3224203.25
7500.00	36.74	259.370	6360.78	668.94S	3565.70W	==>	3610.46	1385389.79	3224144.45
7600.00	36.74	259.370	6440.91	679.97S	3624.50W	==>	3670.00	1385378.76	3224085.66
7700.00	36.74	259.370	6521.04	691.00S	3683.30W	==>	3729.53	1385367.73	3224026.86
7800.00	36.74	259.370	6601.17	702.03S	3742.09W	==>	3789.07	1385356.70	3223968.06
7900.00	36.74	259.370	6681.31	713.06S	3800.89W	==>	3848.61	1385345.67	3223909.27
7902.48	36.74	259.370	6683.29	713.34S	3802.35W	==>	3850.08	1385345.40	3223907.81
8000.00	43.42	261.610	6757.87	723.62S	3864.25W	7.00	3912.64	1385335.12	3223845.91
8100.00	50.30	263.380	6826.21	733.08S	3936.55W	7.00	3985.49	1385325.65	3223773.62
8200.00	57.20	264.840	6885.31	741.31S	4016.72W	7.00	4066.08	1385317.43	3223693.45
8300.00	64.12	266.080	6934.28	748.17S	4103.57W	7.00	4153.19	1385310.56	3223606.61
8400.00	71.04	267.190	6972.40	753.58S	4195.79W	7.00	4245.53	1385305.16	3223514.39
8500.00	77.97	268.200	6999.10	757.44S	4292.02W	7.00	4341.73	1385301.30	3223418.16
8600.00	84.91	269.170	7013.98	759.70S	4390.82W	7.00	4440.35	1385299.04	3223319.37
8673.43	90.00	269.860	7017.24	760.32S	4464.15W	7.00	4513.46	1385298.42	3223246.04
8700.00	90.00	269.860	7017.24	760.38S	4490.72W	==>	4539.93	1385298.35	3223219.47
8800.00	90.00	269.860	7017.24	760.63S	4590.72W	==>	4639.57	1385298.11	3223119.48
8900.00	90.00	269.860	7017.24	760.87S	4690.72W	==>	4739.21	1385297.87	3223019.48
9000.00	90.00	269.860	7017.24	761.11S	4790.72W	==>	4838.85	1385297.62	3222919.49
9100.00	90.00	269.860	7017.24	761.36S	4890.72W	==>	4938.49	1385297.38	3222819.49
9200.00	90.00	269.860	7017.24	761.60S	4990.72W	==>	5038.13	1385297.14	3222719.50
9300.00	90.00	269.860	7017.24	761.84S	5090.72W	==>	5137.77	1385296.89	3222619.50
9400.00	90.00	269.860	7017.24	762.09S	5190.72W	==>	5237.41	1385296.65	3222519.51

All data is in Feet unless otherwise stated
Coordinates are from Slot MD's are from Rig and TVD's are from Rig (Planned Datum #1 4672.2ft above Mean Sea Level)
Vertical Section is from 0.00N 0.00E on azimuth 265.000 degrees
Bottom hole distance is 8836.70 Feet on azimuth 265.00 degrees from Wellhead
Calculation method uses Minimum Curvature method
Prepared by Integrated Petroleum Technologies, Inc.
Date Printed: 21-Mar-2014



INTEGRATED PETROLEUM TECHNOLOGIES, INC
SYSDRILL

Well Design Combined Report
Wellbore: GP-JEvans #3-19-19 (PWB)

Interpolated Wellpath									
MD[ft]	Inc[deg]	Azi[deg]	TVD[ft]	North[ft]	East[ft]	Dogleg [deg/100ft]	Vertical Section[ft]	Northing	Easting
9500.00	90.00	269.860	7017.24	762.33S	5290.71W	==>	5337.05	1385296.41	3222419.51
9600.00	90.00	269.860	7017.24	762.57S	5390.71W	==>	5436.69	1385296.17	3222319.51
9700.00	90.00	269.860	7017.24	762.81S	5490.71W	==>	5536.33	1385295.92	3222219.52
9800.00	90.00	269.860	7017.24	763.06S	5590.71W	==>	5635.97	1385295.68	3222119.52
9900.00	90.00	269.860	7017.24	763.30S	5690.71W	==>	5735.61	1385295.44	3222019.53
10000.00	90.00	269.860	7017.24	763.54S	5790.71W	==>	5835.25	1385295.19	3221919.53
10100.00	90.00	269.860	7017.24	763.79S	5890.71W	==>	5934.88	1385294.95	3221819.54
10200.00	90.00	269.860	7017.24	764.03S	5990.71W	==>	6034.52	1385294.71	3221719.54
10300.00	90.00	269.860	7017.24	764.27S	6090.71W	==>	6134.16	1385294.47	3221619.55
10400.00	90.00	269.860	7017.24	764.51S	6190.71W	==>	6233.80	1385294.22	3221519.55
10500.00	90.00	269.860	7017.24	764.76S	6290.71W	==>	6333.44	1385293.98	3221419.55
10600.00	90.00	269.860	7017.24	765.00S	6390.71W	==>	6433.08	1385293.74	3221319.56
10700.00	90.00	269.860	7017.24	765.24S	6490.71W	==>	6532.72	1385293.49	3221219.56
10800.00	90.00	269.860	7017.24	765.49S	6590.71W	==>	6632.36	1385293.25	3221119.57
10900.00	90.00	269.860	7017.24	765.73S	6690.71W	==>	6732.00	1385293.01	3221019.57
11000.00	90.00	269.860	7017.24	765.97S	6790.71W	==>	6831.64	1385292.77	3220919.58
11100.00	90.00	269.860	7017.24	766.21S	6890.71W	==>	6931.28	1385292.52	3220819.58
11200.00	90.00	269.860	7017.24	766.46S	6990.71W	==>	7030.92	1385292.28	3220719.59
11300.00	90.00	269.860	7017.24	766.70S	7090.71W	==>	7130.56	1385292.04	3220619.59
11400.00	90.00	269.860	7017.24	766.94S	7190.71W	==>	7230.20	1385291.79	3220519.60
11500.00	90.00	269.860	7017.24	767.19S	7290.71W	==>	7329.84	1385291.55	3220419.60
11600.00	90.00	269.860	7017.24	767.43S	7390.71W	==>	7429.48	1385291.31	3220319.60
11700.00	90.00	269.860	7017.24	767.67S	7490.71W	==>	7529.12	1385291.06	3220219.61
11800.00	90.00	269.860	7017.24	767.92S	7590.71W	==>	7628.76	1385290.82	3220119.61
11900.00	90.00	269.860	7017.24	768.16S	7690.71W	==>	7728.40	1385290.58	3220019.62
12000.00	90.00	269.860	7017.24	768.40S	7790.71W	==>	7828.04	1385290.34	3219919.62
12100.00	90.00	269.860	7017.24	768.64S	7890.71W	==>	7927.68	1385290.09	3219819.63
12200.00	90.00	269.860	7017.24	768.89S	7990.71W	==>	8027.32	1385289.85	3219719.63
12300.00	90.00	269.860	7017.24	769.13S	8090.71W	==>	8126.96	1385289.61	3219619.64
12400.00	90.00	269.860	7017.24	769.37S	8190.71W	==>	8226.60	1385289.36	3219519.64
12500.00	90.00	269.860	7017.24	769.62S	8290.71W	==>	8326.24	1385289.12	3219419.64
12600.00	90.00	269.860	7017.24	769.86S	8390.71W	==>	8425.88	1385288.88	3219319.65
12700.00	90.00	269.860	7017.24	770.10S	8490.71W	==>	8525.52	1385288.64	3219219.65
12800.00	90.00	269.860	7017.24	770.34S	8590.70W	==>	8625.16	1385288.39	3219119.66
12900.00	90.00	269.860	7017.24	770.59S	8690.70W	==>	8724.80	1385288.15	3219019.66
13000.00	90.00	269.860	7017.24	770.83S	8790.70W	==>	8824.44	1385287.91	3218919.67
13012.31	90.00	269.860	7017.24	770.86S	8803.02W	==>	8836.70	1385287.88	3218907.36

All data is in Feet unless otherwise stated
Coordinates are from Slot MD's are from Rig and TVD's are from Rig (Planned Datum #1 4672.2ft above Mean Sea Level)
Vertical Section is from 0.00N 0.00E on azimuth 265.000 degrees
Bottom hole distance is 8836.70 Feet on azimuth 265.00 degrees from Wellhead
Calculation method uses Minimum Curvature method
Prepared by Integrated Petroleum Technologies, Inc.
Date Printed: 21-Mar-2014



INTEGRATED PETROLEUM TECHNOLOGIES, INC
SYSDRILL
Well Design Combined Report
Wellbore: GP-JEvans #3-19-19 (PWB)

Hole Sections								
Diameter [in]	Start MD[ft]	Start TVD[ft]	Start North[ft]	Start East[ft]	End MD[ft]	End TVD[ft]	End North[ft]	End East[ft]
12 1/4	0.00	0.00	0.00N	0.00E	900.00	899.13	3.94S	20.99W
8 3/4	900.00	899.13	3.94S	20.99W	8673.00	7017.24	760.32S	4463.72W
6 1/8	8673.00	7017.24	760.32S	4463.72W	13012.31	7017.24	770.86S	8803.02W

Casings								
Name	Top MD[ft]	Top TVD[ft]	Top North[ft]	Top East[ft]	Shoe MD[ft]	Shoe TVD[ft]	Shoe North[ft]	Shoe East[ft]
9 5/8in Surface Casing	0.00	0.00	0.00N	0.00E	900.00	899.13	3.94S	20.99W
7.0in Intermediate Casing	0.00	0.00	0.00N	0.00E	8673.00	7017.24	760.32S	4463.72W
4 1/2in Production Liner	8473.00	6993.04	756.55S	4265.72W	13012.31	7017.24	770.86S	8803.02W

Targets								
Name	North[ft]	East[ft]	TVD[ft]	Latitude	Longitude	Northing	Easting	Last Revised
SG75	760.32S	4464.15W	7017.24	40.38827650	-104.69855590	1385298.42	3223246.04	17-Mar-2014
SG76	770.86S	8803.02W	7017.24	40.38835416	-104.71413111	1385287.88	3218907.36	17-Mar-2014

Survey Tool Program						
Reference	Survey Name	MD[ft]	TVD[ft]	Survey Tool	Error Model	
64327	Planned	13012.31	7017.24	WdW Rate Gyro	Standard	

Notes

All data is in Feet unless otherwise stated
Coordinates are from Slot MD's are from Rig and TVD's are from Rig (Planned Datum #1 4672.2ft above Mean Sea Level)
Vertical Section is from 0.00N 0.00E on azimuth 265.000 degrees
Bottom hole distance is 8836.70 Feet on azimuth 265.00 degrees from Wellhead
Calculation method uses Minimum Curvature method
Prepared by Integrated Petroleum Technologies, Inc.
Date Printed: 21-Mar-2014



SYSDRILL
Closest Approach + Clearance Factor Summary Report
Wellbore: GP-JEvans #3-19-19 (PWB)

Ellipse separations are reported ONLY if BOTH wells have uncertainty data
Only Depth and Magnetic Reference Field error terms are correlated across tie points
Proximities beyond 1000.00ft with expansion rate of 0.00ft/1000ft are not reported
Scan limit is calculated on CENTRE to CENTRE distance

Summary data uses Closest Approach clearance calculation for all minima
Hole size/Casings ARE included
Hole size/Casings are NOT subtracted from Centre-Centre distance
Confidence limit of 95.00% / 2.80 SD.

Wellbore		
Name	Created	Last Revised
GP-JEvans #3-19-19 (PWB)	19-Sep-2013	21-Mar-2014

Well		
Name	Government ID	Last Revised
GP-JEvans #3-19-19		20-Mar-2014

Slot						
Name	Grid Northing	Grid Easting	Latitude	Longitude	North	East
Slot #46	1386058.7050	3227710.0010	40.39025156	-104.68250621	436.46S	376.56W

Installation				
Name	Easting	Northing	Coord System Name	North Alignment
Mineral Resources MRI	3228086.5450	1386495.1419	CO83-NF on NORTH AMERICAN DATUM 1983 datum	Grid

Field				
Name	Easting	Northing	Coord System Name	North Alignment
Wattenberg	3211772.6087	1400656.3763	CO83-NF on NORTH AMERICAN DATUM 1983 datum	Grid

Clearance Summary										
Offset WellName	Offset Wellbore	Offset Slot	Offset Structure	Separation [ft]	MD[ft]	Diverging From[ft]	Ellipse Separation [ft]	Ellipse MD[ft]	Clearance Factor	Clearance MD[ft]
GP-JEvans 4-19-19	GP-JEvans 4-19-19 (PWB)	Slot #47	Mineral Resources MRI	11.82	659.04	13008.63	9.83	672.57	2.52	13012.31
GP-JEvans #2-19-19	GP-JEvans #2-19-19 (PWB)	Slot #45	Mineral Resources MRI	11.95	429.37	2700.00	10.32	442.91	2.52	13012.31
GP-JEvans #5-19-19	GP-JEvans #5-19-19 (PWB)	Slot #48	Mineral Resources MRI	24.00	200.00	200.00	22.77	229.66	4.21	13012.31
GP-JEvans #1-19-19	GP-JEvans #1-19-19 (PWB)	Slot #44	Mineral Resources MRI	24.00	557.74	13012.31	22.18	574.15	4.21	13012.31
GP-Double Clutch #1-19-19	GP-Double Clutch #1-19-19 (PWB)	Slot #49	Mineral Resources MRI	36.00	250.11	13001.27	34.68	250.11	6.45	13012.31
GP-Hillside #3-19-19	GP-Hillside #3-19-19 (PWB)	Slot #43	Mineral Resources MRI	36.00	557.74	557.74	34.18	574.15	6.45	13012.31
GP-Double Clutch #2-19-19	GP-Double Clutch #2-19-19 (PWB)	Slot #50	Mineral Resources MRI	47.28	771.00	3800.00	45.11	787.40	18.24	7004.59
GP-Hillside #2-19-19	GP-Hillside #2-19-19 (PWB)	Slot #42	Mineral Resources MRI	48.00	500.00	500.00	46.26	524.93	18.94	6807.74
GP-Double Clutch #3-19-19	GP-Double Clutch #3-19-19	Slot #51	Mineral Resources MRI	59.09	794.01	794.01	56.88	803.81	25.33	885.83

All data is in Feet unless otherwise stated
Coordinates are from Slot MD's are from Rig and TVD's are from Rig (Planned Datum #1 4672.2ft above Mean Sea Level)
Vertical Section is from 0.00N 0.00E on azimuth 265.000 degrees
Prepared by Integrated Petroleum Technologies, Inc.
Date Printed: 21-Mar-2014



SYSDRILL
Closest Approach + Clearance Factor Summary Report
Wellbore: GP-JEvans #3-19-19 (PWB)

Clearance Summary										
Offset WellName	Offset Wellbore	Offset Slot	Offset Structure	Separation [ft]	MD[ft]	Diverging From[ft]	Ellipse Separation [ft]	Ellipse MD[ft]	Clearance Factor	Clearance MD[ft]
(PWB)										
GP-Hillside #1-18-18	GP-Hillside #1-18-18 (PWB)	Slot #41	Mineral Resources MRI	60.00	557.74	557.74	58.18	574.15	24.31	5774.28
GP-Dairy #1-19-19	GP-Dairy #1-19-19 (PWB)	Slot #52	Mineral Resources MRI	70.93	800.27	800.27	68.72	800.27	30.62	885.83
GP-Jackson #5-18-18	GP-Jackson #5-18-18 (PWB)	Slot #40	Mineral Resources MRI	73.01	557.74	557.74	71.18	574.15	28.31	5052.49
GP-Dairy #2-19-20	GP-Dairy #2-19-20 (PWB)	Slot #53	Mineral Resources MRI	83.06	780.63	780.63	80.88	780.63	36.22	885.83
GP-Jackson #4-18-18	GP-Jackson #4-18-18 (PWB)	Slot #39	Mineral Resources MRI	85.01	557.74	557.74	83.18	574.15	38.35	885.83
GP-Dairy #3-19-20	GP-Dairy #3-19-20 (PWB)	Slot #54	Mineral Resources MRI	95.34	733.77	733.77	93.24	733.77	42.28	885.83
GP-Jackson #3-18-18	GP-Jackson #3-18-18 (PWB)	Slot #38	Mineral Resources MRI	97.01	557.74	557.74	95.18	574.15	43.32	885.83
GP-Dairy #4-19-20	GP-Dairy #4-19-20 (PWB)	Slot #55	Mineral Resources MRI	107.69	683.67	683.67	105.68	683.67	48.68	885.83
GP-Jackson #2-18-18	GP-Jackson #2-18-18 (PWB)	Slot #37	Mineral Resources MRI	109.01	557.74	557.74	107.18	574.15	47.58	3756.56
GP-Dairy #4-19-20	GP-Dairy #4-19-20 (PWB)	Slot #56	Mineral Resources MRI	119.93	599.90	599.90	118.05	599.90	55.52	885.83
GP-Jackson #1-18-18	GP-Jackson #1-18-18 (PWB)	Slot #36	Mineral Resources MRI	121.01	557.74	557.74	119.18	574.15	49.64	3592.52
GP-Library #1-19-20	GP-Library #1-19-20 (PWB)	Slot #57	Mineral Resources MRI	132.01	550.00	550.00	130.21	550.00	62.71	885.83
GP-Alles #3-18-18	GP-Alles #3-18-18 (PWB)	Slot #35	Mineral Resources MRI	133.01	523.27	523.27	131.25	524.93	52.82	3412.07
GP-Alles #2-18-18	GP-Alles #2-18-18 (PWB)	Slot #34	Mineral Resources MRI	145.01	459.32	459.32	143.33	475.72	64.10	3133.20
Tri Point #E3	Tri Point #E3 (AWB)	Tri Point #E3	Mineral Resources MRI	155.82	3375.45	3375.45	112.58	3362.86	3.60	3346.46
Commerce Center 4 #20-2H5	Commerce Center 4 #20-2H5 (AWB)	Commerce Center 4 #20-2H5	MRI Offsets	160.12	1944.22	1944.22	153.06	1950.00	22.27	2001.31
Sunnyview #E4	Sunnyview #E4 (AWB)	Sunnyview #E4	Mineral Resources MRI	161.44	3116.80	3116.80	137.58	3280.84	3.78	4117.45
CDOT-2 #D7	CDOT-2 #D7 (AWB)	CDOT-2 #D7	Mineral Resources MRI	206.68	550.00	550.00	203.68	557.74	22.04	2837.93

All data is in Feet unless otherwise stated
Coordinates are from Slot MD's are from Rig and TVD's are from Rig (Planned Datum #1 4672.2ft above Mean Sea Level)
Vertical Section is from 0.00N 0.00E on azimuth 265.000 degrees
Prepared by Integrated Petroleum Technologies, Inc.
Date Printed: 21-Mar-2014



SYSDRILL
Closest Approach + Clearance Factor Summary Report
Wellbore: GP-JEvans #3-19-19 (PWB)

Clearance Summary										
Offset WellName	Offset Wellbore	Offset Slot	Offset Structure	Separation [ft]	MD[ft]	Diverging From[ft]	Ellipse Separation [ft]	Ellipse MD[ft]	Clearance Factor	Clearance MD[ft]
CDOT-3 #D2	CDOT-3 #D2 (AWB)	CDOT-3 #D2	Mineral Resources MRI	220.43	590.55	590.55	217.23	623.36	45.34	1410.76
Ehrlich Motors #D8	Ehrlich Motors #D8 (AWB)	Ehrlich Motors #D8	Mineral Resources MRI	235.42	559.88	559.88	233.93	559.88	19.39	4330.71
Sleep Inn #E5	Sleep Inn #E5 (AWB)	Sleep Inn #E5	Mineral Resources MRI	248.93	0.00	0.00	247.81	49.21	42.64	2500.00
CDOT-1 #E2	CDOT-1 #E2 (AWB)	CDOT-1 #E2	Mineral Resources MRI	291.94	850.00	2161.50	286.54	885.83	13.86	2460.63
University Square #D6	University Square #D6 (AWB)	University Square #D6	Mineral Resources MRI	332.32	16.40	16.40	330.54	311.68	17.97	4117.45
Garden City #D5	Garden City #D5 (AWB)	Garden City #D5	Mineral Resources MRI	351.23	11.24	11.24	349.44	246.06	40.03	3330.05
University 5 Spot #D4	University 5 Spot #D4 (AWB)	University 5 Spot #D4	Mineral Resources MRI	405.67	218.57	218.57	404.12	262.47	31.90	2723.10
Wheeler #D3	Wheeler #D3 (AWB)	Wheeler #D3	Mineral Resources MRI	413.20	197.18	197.18	411.67	213.25	43.86	2214.57
Driftwood #D1	Driftwood #D1 (AWB)	Driftwood #D1	Mineral Resources MRI	421.04	0.00	348.63	419.87	49.21	51.50	2500.00
Classic Lanes #C9	Classic Lanes #C9 (AWB)	Classic Lanes #C9	Mineral Resources MRI	424.41	0.00	0.00	423.19	82.02	49.94	2132.55
District Six #C6	District Six #C6 (AWB)	District Six #C6	Mineral Resources MRI	434.67	200.00	200.00	433.14	229.66	103.37	1804.46
Volk #C7	Volk #C7 (AWB)	Volk #C7	Mineral Resources MRI	435.48	0.00	551.08	434.38	32.81	68.74	2099.74
Union Pacific #C5	Union Pacific #C5 (AWB)	Union Pacific #C5	Mineral Resources MRI	443.56	147.64	147.64	442.05	180.45	121.95	1771.65
HWY 85-3 #C4	HWY 85-3 #C4 (AWB)	HWY 85-3 #C4	Mineral Resources MRI	455.49	116.57	116.57	454.20	147.64	141.58	1853.67
Countryside Center #C3	Countryside Center #C3 (AWB)	Countryside Center #C3	Mineral Resources MRI	460.25	0.24	0.24	459.24	32.81	149.67	1574.80
BMC #B8	BMC #B8 (AWB)	BMC #B8	Mineral Resources MRI	576.45	0.24	0.24	574.80	131.23	72.00	2477.03
Millers Green House #A10	Millers Green House #A10 (AWB)	Millers Green House #A10	Mineral Resources MRI	580.13	2.24	2.24	578.40	246.06	177.44	1492.78
Riverview #A9	Riverview #A9 (AWB)	Riverview #A9	Mineral Resources MRI	582.86	500.23	500.23	579.97	500.23	186.30	885.83
HWY 34-2	HWY 34-2	HWY 34-2	Mineral Resources	592.77	1.24	1.24	591.20	131.23	186.67	885.83

All data is in Feet unless otherwise stated
Coordinates are from Slot MD's are from Rig and TVD's are from Rig (Planned Datum #1 4672.2ft above Mean Sea Level)
Vertical Section is from 0.00N 0.00E on azimuth 265.000 degrees
Prepared by Integrated Petroleum Technologies, Inc.
Date Printed: 21-Mar-2014



SYSDRILL
Closest Approach + Clearance Factor Summary Report
Wellbore: GP-JEvans #3-19-19 (PWB)

Clearance Summary										
Offset WellName	Offset Wellbore	Offset Slot	Offset Structure	Separation [ft]	MD[ft]	Diverging From[ft]	Ellipse Separation [ft]	Ellipse MD[ft]	Clearance Factor	Clearance MD[ft]
#A8	#A8 (AWB)	#A8	MRI							
Greeley Industrial South #B9	Greeley Industrial South #B9 (AWB)	Greeley Industrial South #B9	Mineral Resources MRI	593.30	550.00	550.00	591.20	557.74	100.66	2050.52
HWY 34-1 #A7	HWY 34-1 #A7 (AWB)	HWY 34-1 #A7	Mineral Resources MRI	601.26	1.24	1.24	599.45	200.00	178.59	885.83
Shupe 5 Spot #B10	Shupe 5 Spot #B10 (AWB)	Shupe 5 Spot #B10	Mineral Resources MRI	611.35	550.00	550.00	609.25	557.74	175.86	2083.33
Highway 85-2 #B-11	Highway 85-2 #B-11 (AWB)	Highway 85-2 #B-11	Mineral Resources MRI	628.61	311.68	311.68	626.58	311.68	146.04	1722.44
Sam Pak #A6	Sam Pak #A6 (AWB)	Sam Pak #A6	Mineral Resources MRI	633.42	4.24	4.24	631.66	300.00	244.91	885.83
Bus Barn #A5	Bus Barn #A5 (AWB)	Bus Barn #A5	Mineral Resources MRI	641.58	4.24	4.24	639.61	300.00	161.85	1345.14
Highway 85-1 #B12	Highway 85-1 #B12 (AWB)	Highway 85-1 #B12	Mineral Resources MRI	647.44	550.00	550.00	645.34	557.74	233.65	1902.89
Smith 5 Spot #A4	Smith 5 Spot #A4 (AWB)	Smith 5 Spot #A4	Mineral Resources MRI	654.67	3.24	3.24	652.99	147.64	201.97	885.83
Parkview South #A3	Parkview South #A3 (AWB)	Parkview South #A3	Mineral Resources MRI	668.48	4.24	4.24	667.01	147.64	259.14	1450.00
Delta Park #A2	Delta Park #A2 (AWB)	Delta Park #A2	Mineral Resources MRI	678.59	200.00	200.00	676.91	213.25	172.87	1459.97
Clark #A1	Clark #A1 (AWB)	Clark #A1	Mineral Resources MRI	693.66	4.24	4.24	691.90	229.66	121.93	1952.10
Commerce Center 3 #20-1H5	Commerce Center 3 #20-1H5 (AWB)	Commerce Center 3 #20-1H5	MRI Offsets	747.06	557.74	557.74	744.16	574.15	200.31	1706.04