

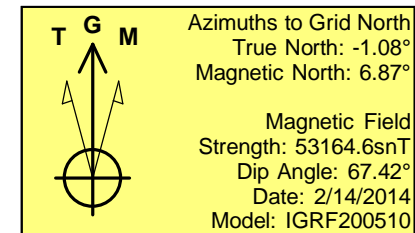
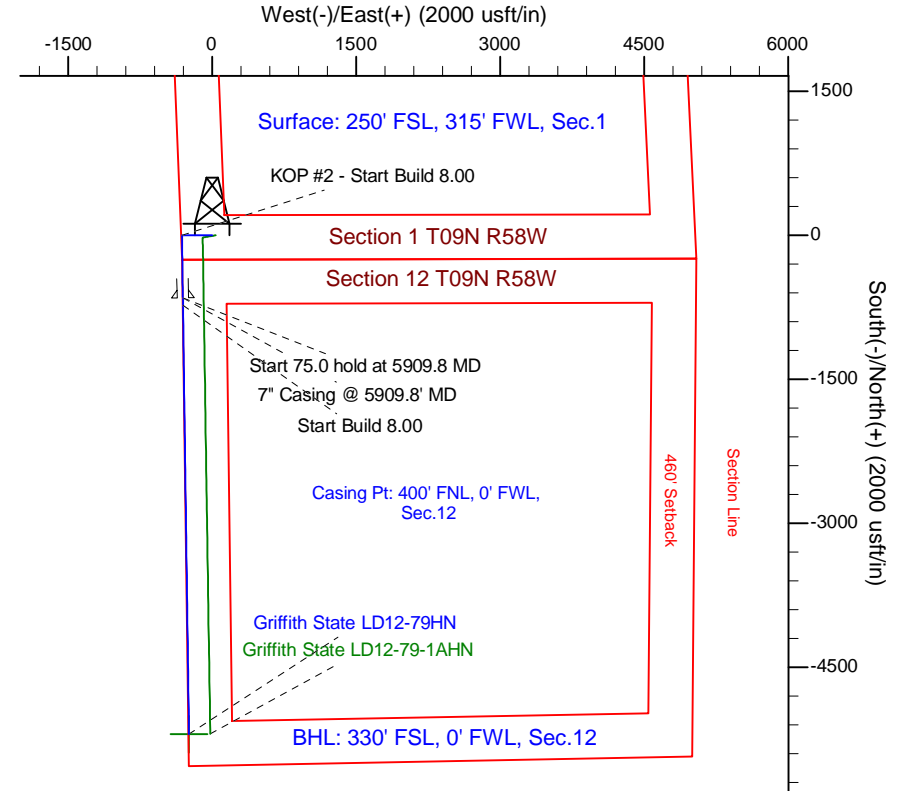
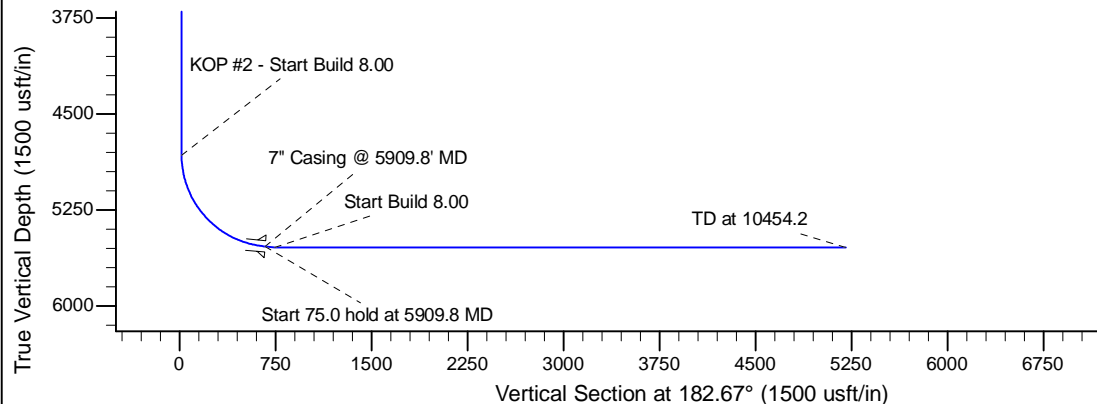
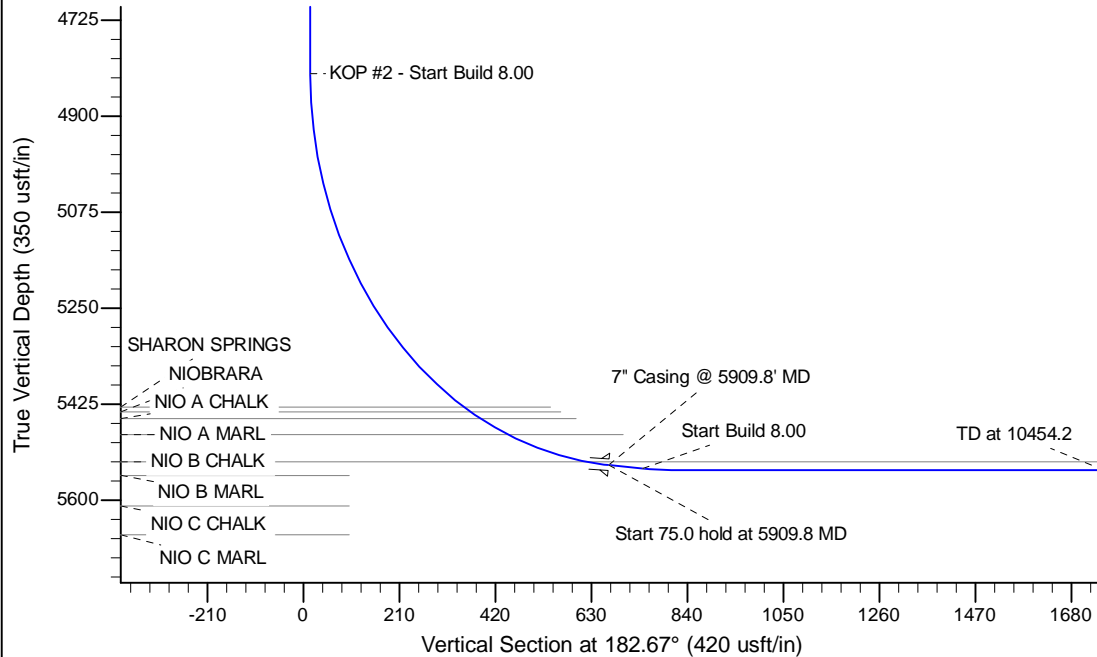
Project: Wattenberg Field  
 Site: LD (Sec.1-T09N-R58W) Weld County, CO  
 Well: Griffith State LD12-79HN  
 Wellbore: Original Drilling  
 Design: APD - Rev 0

# Northern Region Drilling - Working

Geodetic System: US State Plane 1983  
 Datum: North American Datum 1983  
 Ellipsoid: GRS 1980  
 Zone: Colorado Northern Zone  
 System Datum: Mean Sea Level

## SECTION DETAILS

Sec	MD	Inc	Azi	TVD	+N/-S	+E/-W	Dleg	TFace	Vsect	Target
1	0.0	0.00	0.00	0.0	0.0	0.0	0.00	0.00	0.0	
2	1500.0	0.00	0.00	1500.0	0.0	0.0	0.00	0.00	0.0	
3	2001.0	10.02	270.00	1998.5	0.0	-43.7	2.00	270.00	2.0	
4	3309.0	10.02	270.00	3286.5	0.0	-271.3	0.00	0.00	12.6	
5	3810.1	0.00	0.00	3785.0	0.0	-315.0	2.00	180.00	14.7	
6	4847.3	0.00	0.00	4822.3	0.0	-315.0	0.00	0.00	14.7	
7	5909.8	85.00	179.20	5535.7	-653.7	-305.9	8.00	179.20	667.2	
8	5984.8	85.00	179.20	5542.3	-728.4	-304.8	0.00	0.00	741.8	
9	6047.3	90.00	179.20	5545.0	-790.8	-303.9	8.00	0.00	804.1	
10	10454.2	90.00	179.20	5545.0	-5197.3	-242.4	0.00	0.00	5202.9	Griffith State LD12-79HN BHL 330'FSL, 0'FWL



WELL DETAILS: Griffith State LD12-79HN				
Ground Level: 4655.0				
0.0	0.0	1529233.64	3465149.42	-103.820500
Plan: APD - Rev 0 (Griffith State LD12-79HN/Original Drilling)				
Created By: Shailey Jewell Date: 12:53, February 14 2014				
OK to submit with 2A as per Noble Drilling 2/14/2014 1:24				