



Lat40°, Inc. 1635 Foxtrail Drive, Suite 325 Loveland, CO 970-776-3321

# WELL LOCATION CERTIFICATE

THIS MAP DOES NOT REPRESENT A BOUNDARY SURVEY

SECTION: 1  
TOWNSHIP: 9N  
RANGE: 58W

FOUND #6 REBAR  
WITH 2.5" ALUM.  
CAP LS 17492

SW1/4

SE1/4

S.36, T.10N., R.58W.

FOUND #6 REBAR  
WITH 2.5" ALUM.  
CAP LS 17492

N 88°34'40" E 2645.90' N 88°54'05" E 2672.20'

FOUND #6 REBAR WITH  
2.5" ALUM. CAP LS 38175

GOV'T LOT 4

GOV'T LOT 3

GOV'T LOT 2

GOV'T LOT 1

N 02°17'12" W 2611.63'

NW1/4

NE1/4

N 02°41'18" W 2652.97'

S 02°42'58" E 2679.03'

FOUND 1" PIPE  
WITH 2.5" BRASS  
CAP GLO 1918

S.1, T.9N., R.58W.

EX. MOTIS 2

FOUND #6 REBAR  
WITH 2.5" ALUM.  
CAP LS 17492

N 89°27'32" E 2665.44' N 89°27'32" E 2674.34'

N 02°23'06" W 2638.73'

SW1/4

SE1/4

N 02°41'18" W 2662.12'

S 02°43'39" E 2679.21'

FOUND #6 REBAR  
WITH 2.5" ALUM.  
CAP LS 17492

1562' 400' ATWATER STATE LD01-76-1AHN

S 89°56'53" W 2680.37' S 89°49'22" W 2676.87'

FOUND 1" PIPE WITH  
2.5" BRASS CAP GLO 1918

FOUND 2" PIPE WITH  
2.5" BRASS CAP GLO 1918

In accordance with a request from Brian James with Noble Energy Inc., Lat40°, Inc. has determined the surface location of the ATWATER STATE LD01-76-1AHN to be 400' from the SOUTH line and 1562' from the WEST line as measured at right angles from the section lines of Section 1, Township 9 North, Range 58 West and the bottom hole to be 810' from the NORTH line and 2200' from the WEST line as measured at right angles from the section lines of Section 36, Township 10 North, Range 58 West of the Sixth Principal Meridian, County of Weld, State of Colorado.

I hereby state that this Well Location Certificate was prepared by me, or under my direct supervision, that the fieldwork was completed on 9/4/2013, for and on behalf of Noble Energy Inc.. That this is not a Land Survey Plat or an Improvement Survey Plat, and that it is not to be relied upon for establishment of fence, building, or other future improvement lines.

## NOTE:

- 1) Bearings shown are Grid Bearings of the Colorado State Plane Coordinate System, North Zone, North American Datum 1983/2007. The lineal dimensions as contained herein are based upon the "U.S. Survey Foot."
  - 2) Ground elevations are based on an observed GPS elevation (NAVD 1988 DATUM).
  - 3) IMPROVEMENTS: See LOCATION DRAWING for all visible improvements within 500' of disturbed area.
  - 4) SURFACE USE: RANGELAND
  - 5) INSTRUMENT OPERATOR: BRIAN ROTTINGHAUS
  - 6) NEAREST EXISTING WELL: MOTIS 2, 4003' NE
- NEAREST CULTURAL ITEMS:  
BUILDING: 3827' SW  
BUILDING UNIT: 5280'+  
HIGH OCCUPANCY BUILDING UNIT: 5280'+  
DESIGNATED OUTSIDE ACTIVITY AREA: 5280'+  
PUBLIC ROAD: 5280'+  
ABOVEGROUND UTILITY: 5280'+  
RAILROAD: 5280'+  
PROPERTY LINE: 400' S

**SURFACE LOCATION**  
LAT: 40.77439°N  
LONG: 103.81601°W  
PDOP: 1.7  
ELEV: 4648'  
1/4,1/4: SE1/4SW1/4

**BOTTOM HOLE**  
LAT: 40.80022°N  
LONG: 103.81441°W

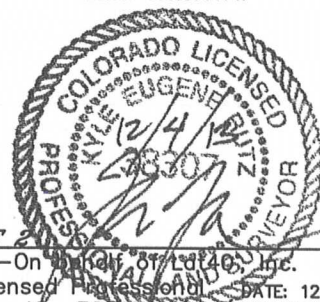
## LEGEND

- = ALIQUOT MONUMENT AS DESCRIBED  
○ = CALCULATED POSITION

SHEET 1 OF 2

Kyle E. Rutz-On behalf of Lat40°, Inc.  
Colorado Licensed Professional  
Land Surveyor No. 38307

DATE: 12/16/2013  
PROJECT#: 2013115



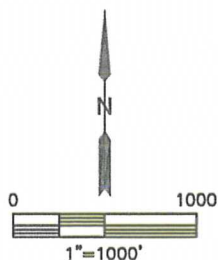
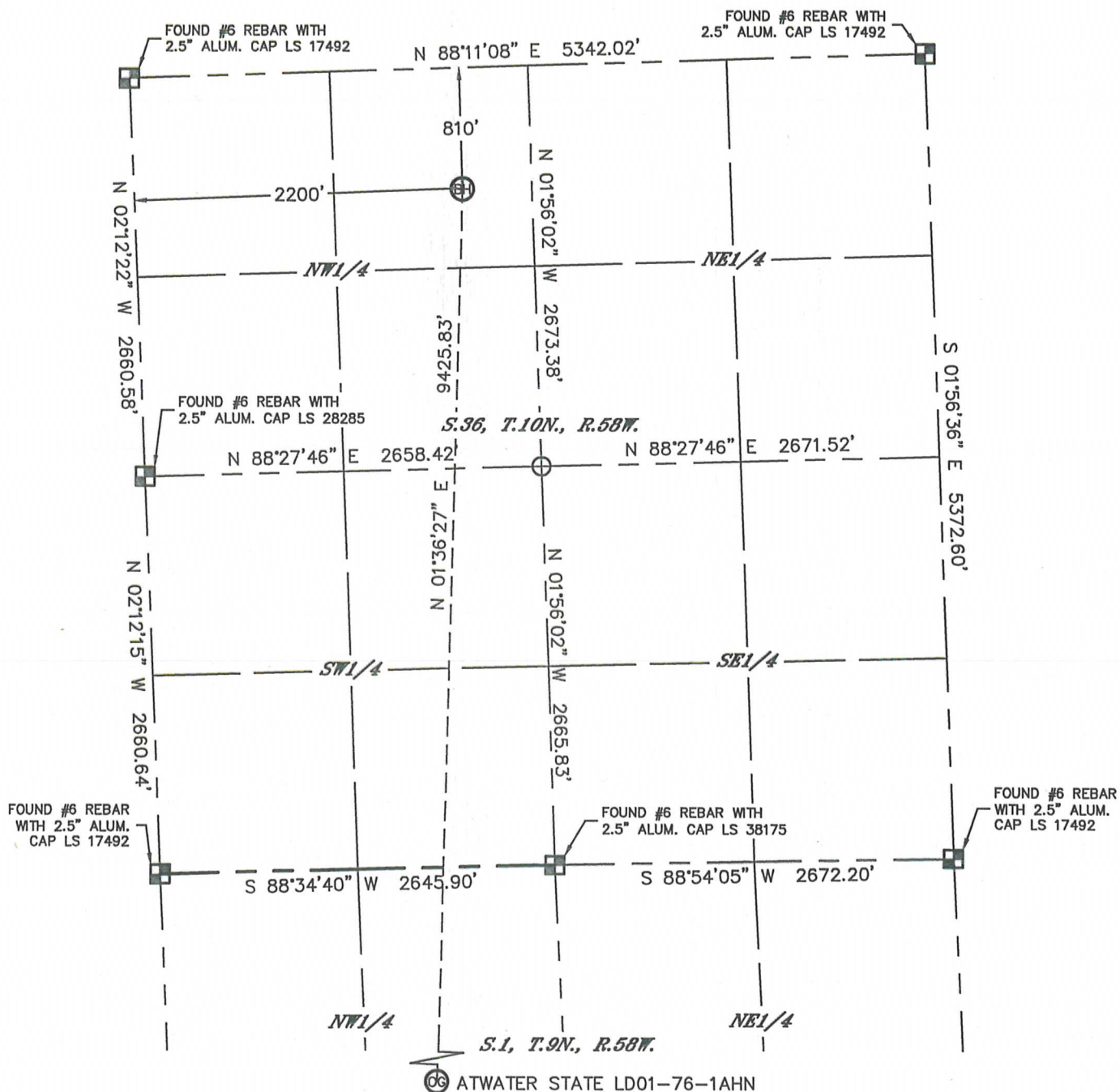


Lat40°, Inc. 1635 Foxtrail Drive, Suite 325 Loveland, CO 970-776-3321

# WELL LOCATION CERTIFICATE

THIS MAP DOES NOT REPRESENT A BOUNDARY SURVEY

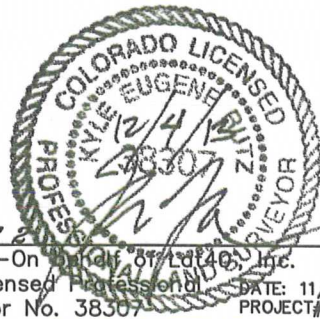
SECTION: 1  
TOWNSHIP: 9N  
RANGE: 58W



LEGEND  
□ = ALIQUOT MONUMENT AS DESCRIBED  
○ = CALCULATED POSITION

SHEET 2 OF 2

Kyle E. Rutz-On Order 8/1/2013, Inc.  
Colorado Licensed Professional Land Surveyor No. 38307



DATE: 11/21/2013  
PROJECT#: 2013115

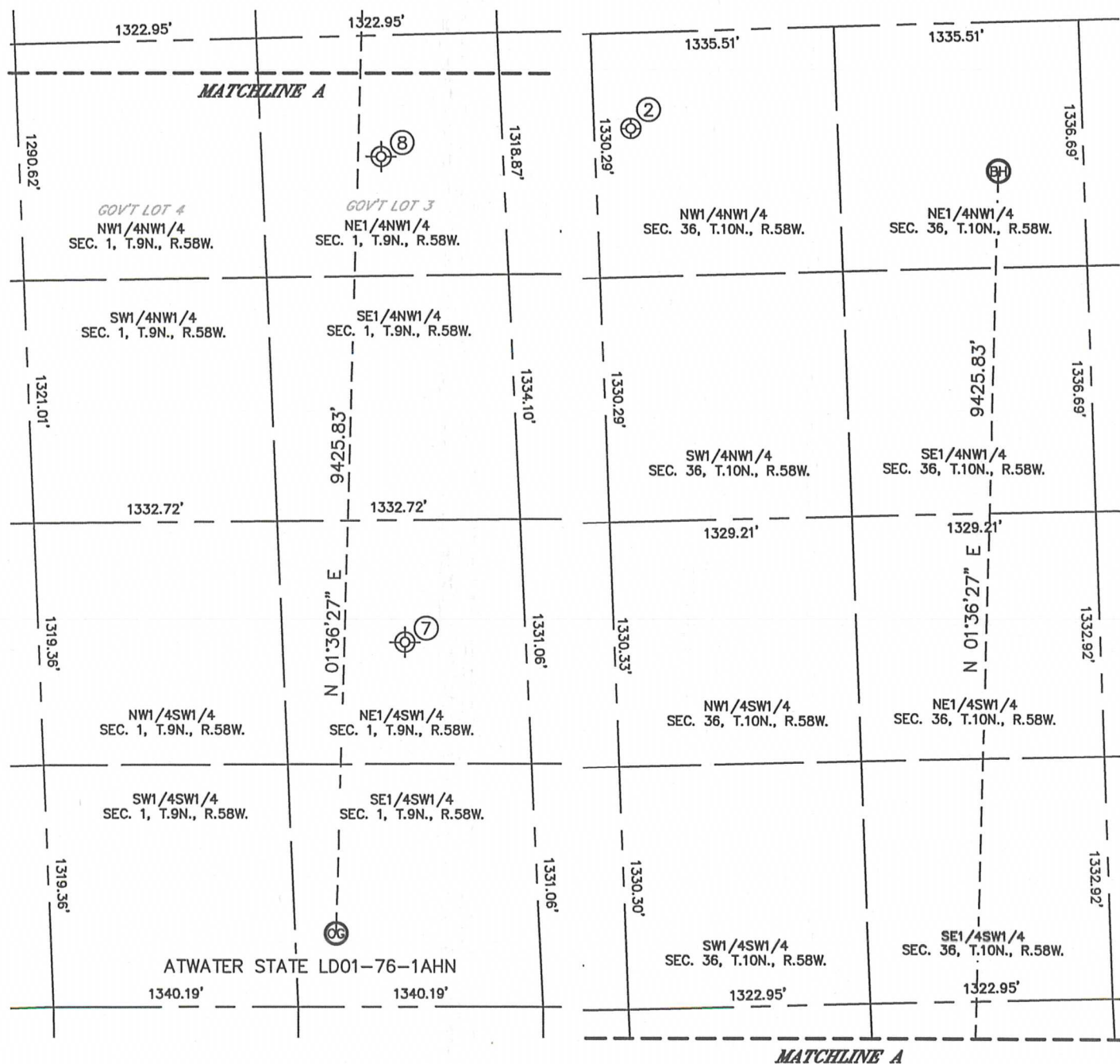


Lat40°, Inc. 1635 Foxtrail Drive, Suite 325 Loveland, CO 970-776-3321

# SITE SKETCH

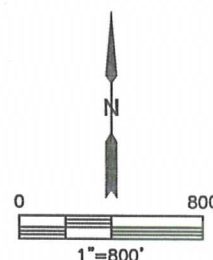
## ATWATER STATE LD01-76-1AHN

SECTION: 1  
TOWNSHIP: 9N  
RANGE: 58W



WELL NO.	WELL NAME	SHL FOOTAGE				SHL LAT°	SHL LONG°	PDOP	ELEV (FT.)	1/4/1/4
2	CASTER PC LA 36-68HN	520	FNL	200	FWL	40.80095	-103.82165	1.9	4695	NWNW
7	BEST 1	1990	FSL	2004	FWL	40.77868	-103.81459	NA	4650	NESW
8	BEST 1	660	FNL	1980	FWL	40.78598	-103.81493	NA	4663	NENW

NOTE: THE ABANDONED WELL DATA SHOWN IN RED ABOVE WAS OBTAINED FROM COGCC SCOUT CARDS.



DATE: 12/4/2013  
PROJECT#: 2013115