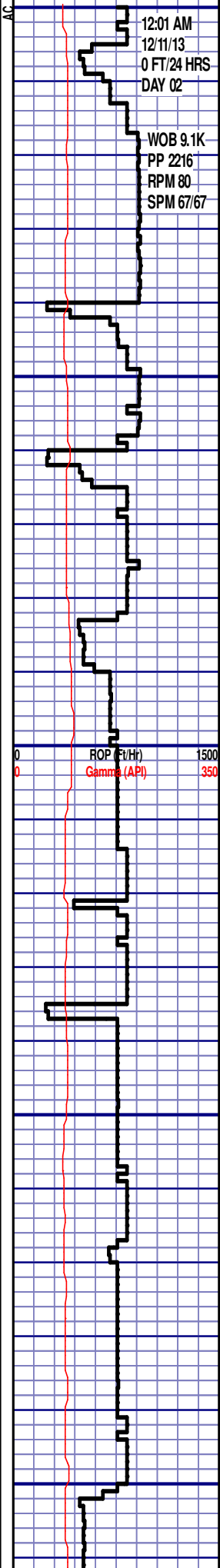




Logger On Shift		ROP (Ft/Hr) Gamma (API)		Drill Depth v. Time		Survey Data		Depth		Lithology		Lithology Percentages		Sample Photographs		Oil Fair Good		Porosity		Geological Description		Connections		TG (1-8) C1 (units) C2 (units) C3 (units) C4 (units)		Total Gas, C1-C4									
0	0	ROP (Ft/Hr)	1500	Gamma (API)	350			24														-50		TG, C1-C4		450									
SLIDE-RED ROTATE-WHITE																		NOBLE ENERGY NCLP PC AA04-69-1HN 4-T6N-R63W 660' FNL, 250' FWL WELD COUNTY, CO H&P 321 LOGGERS: ANDREW CHRISTIANO HANNAH BLATCHFORD CALLED OUT BY COMPANY MAN 12/10/13 COMMENCED LOGGING @12:15 PM @ 2500' MD ON 12/11/13 W/BIT # 1						CONNECTIONS ARE MARKED WITH RED TRIANGLES											
ROP SCALE: 0 TO 1500 (FT/HR)																								GAS SCALE: -50 TO 450 50 UNITS/DIVISION											
GAMMA SCALE: 0 TO 350																								DRILLING ON WATER-BASED MUD											
(GAMMA DATA AS RECEIVED)																																			

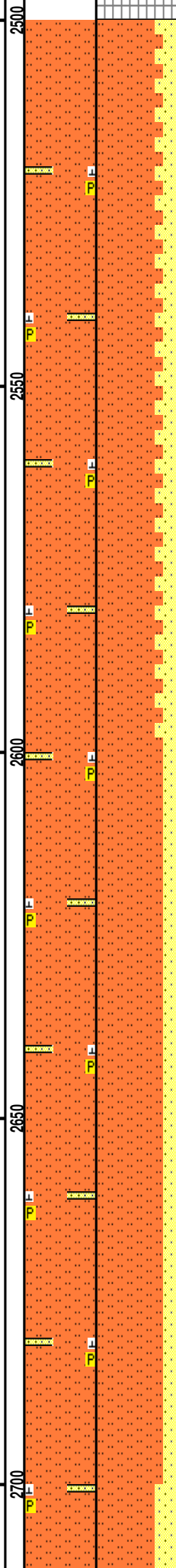


12:01 AM  
12/11/13  
0 FT/24 HRS  
DAY 02

WOB 9.1K  
PP 2216  
RPM 80  
SPM 67/67

ROP (ft/hr)  
Gamma (API)

MD 2674 TVD 2673.65  
INC 0.77 AZ 265.27  
VS-7.41

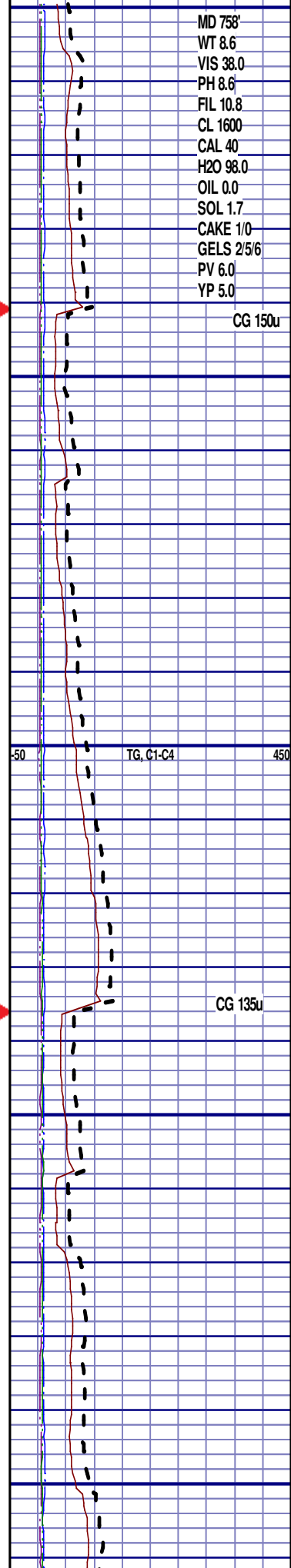


Pierre (2500' MD - 2600' MD)

### PIERRE BEFORE LOGGING DEPTH

2500'- 2600': SLTST: 75% LTGY -  
MEDLTGY, FRI, FN TO MED GRN, W  
SRTD, CALC CMT, SANDY, IMBD  
PYR, IMBD SS LAMN, INTGR POR,  
NO STN, NO FLOR, NO O FLOR, NO  
CUT, NO RNG

2600'- 2700': SLTST: 80% LTGY -  
MEDLTGY, FRI, FN TO MED GRN, W  
SRTD, CALC CMT, SANDY, IMBD  
PYR, IMBD SS LAMN, INTGR POR,  
NO STN, NO FLOR, NO O FLOR, NO  
CUT, NO RNG

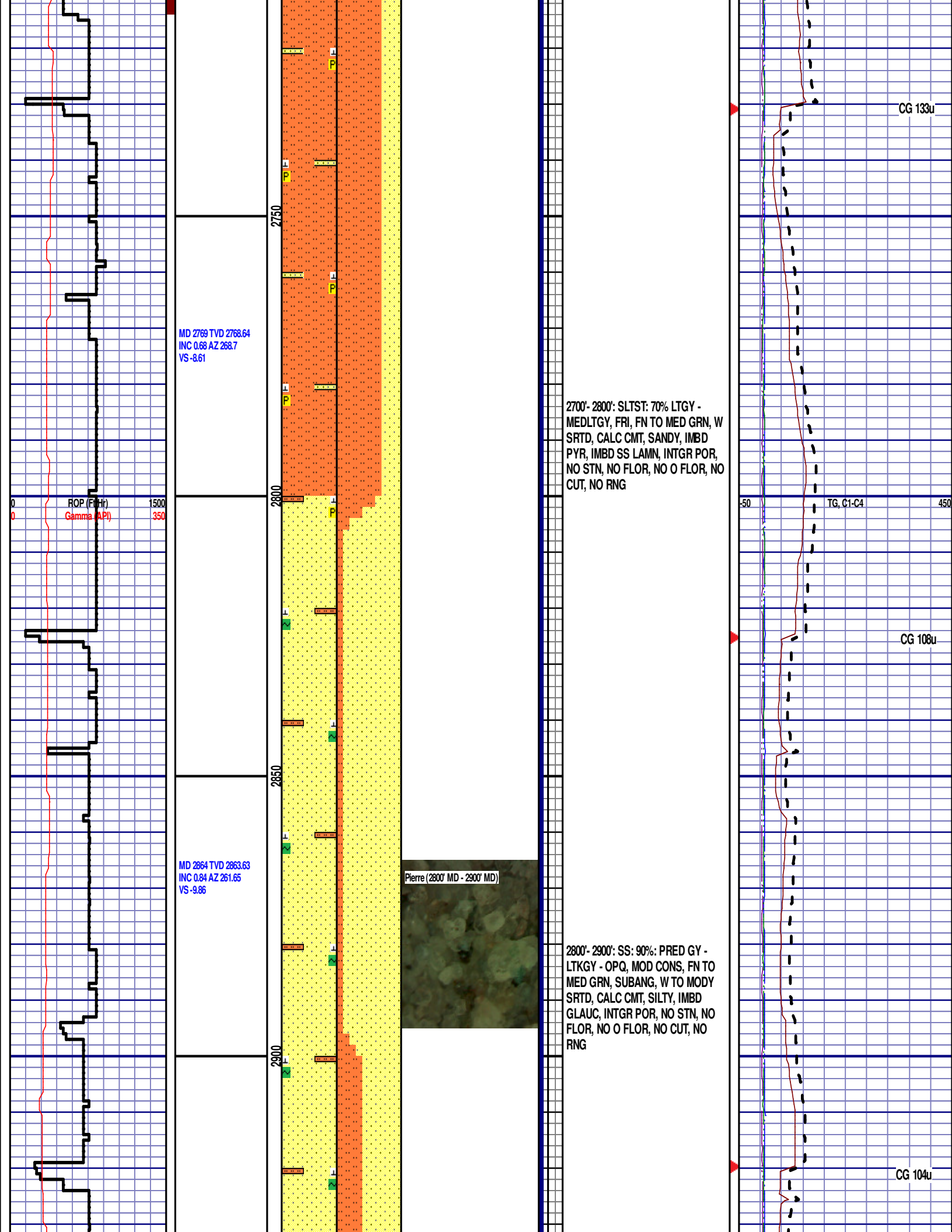


MD 758'  
WT 8.6  
VIS 38.0  
PH 8.6  
FIL 10.8  
CL 1600  
CAL 40  
H2O 98.0  
OIL 0.0  
SOL 1.7  
CAKE 1/0  
GELS 2/5/6  
PV 6.0  
YP 5.0

CG 150u

TG, C1-C4

CG 135u



MD 2769 TVD 2768.64  
INC 0.68 AZ 268.7  
VS -8.61

ROP (Ft/Hr)  
Gamma (API)

MD 2864 TVD 2863.63  
INC 0.84 AZ 261.65  
VS -9.86

Pierre (2800' MD - 2900' MD)

2700'- 2800': SLTST: 70% LTGY -  
MEDLTGY, FRI, FN TO MED GRN, W  
SRTD, CALC CMT, SANDY, IMBD  
PYR, IMBD SS LAMN, INTGR POR,  
NO STN, NO FLOR, NO O FLOR, NO  
CUT, NO RNG

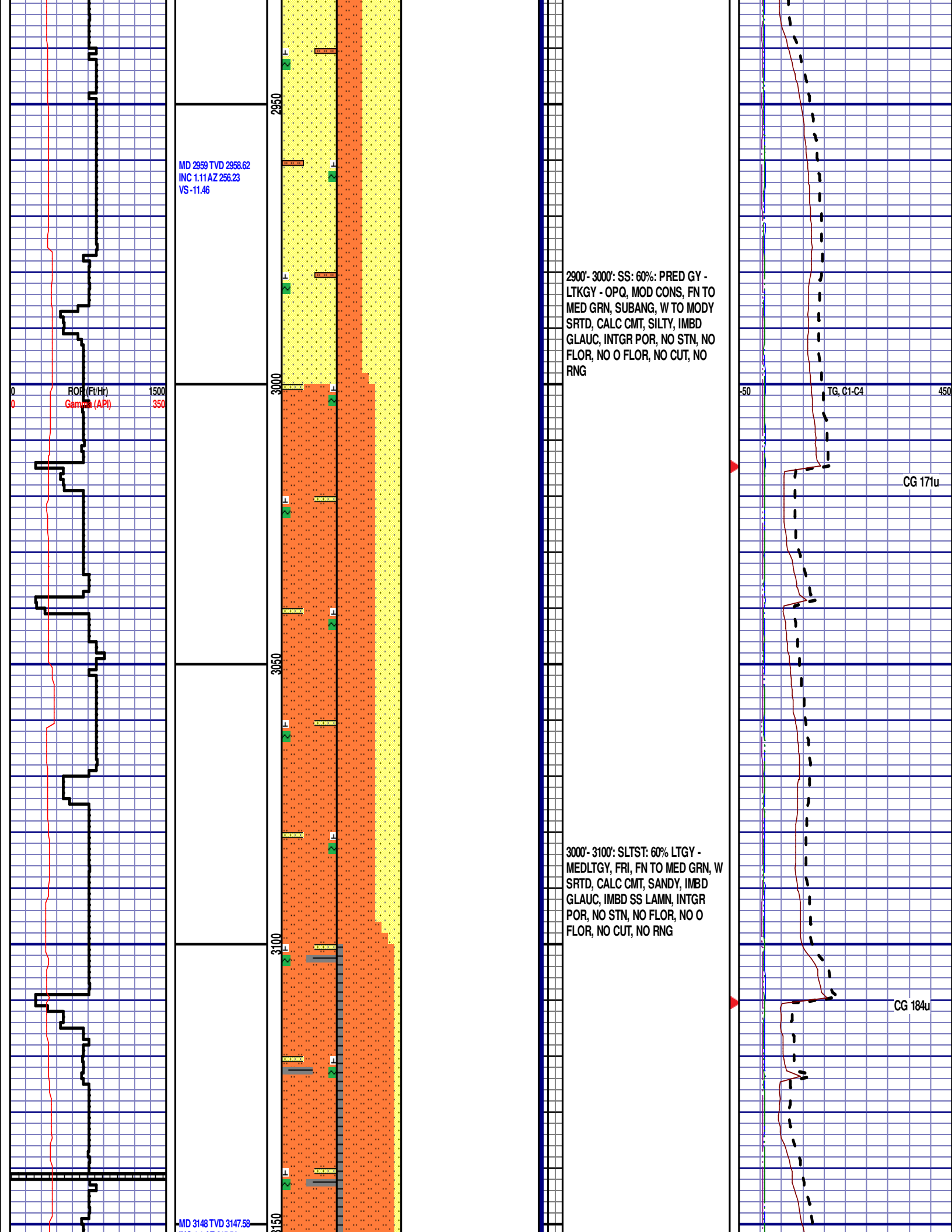
2800'- 2900': SS: 90%: PRED GY -  
LTKGY - OPQ, MOD CONS, FN TO  
MED GRN, SUBANG, W TO MODY  
SRTD, CALC CMT, SILTY, IMBD  
GLAUC, INTGR POR, NO STN, NO  
FLOR, NO O FLOR, NO CUT, NO  
RNG

CG 133u

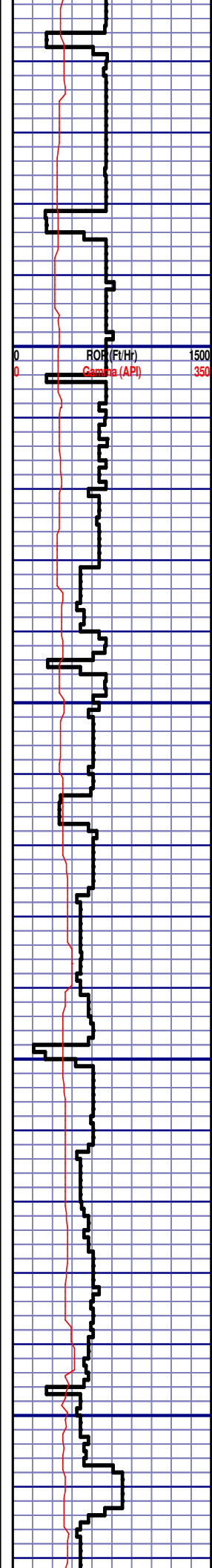
TG, C1-C4

CG 108u

CG 104u



INC 1.1 AZ 215.54  
VS -14.41



MD 3243 TVD 3242.55  
INC 1.77 AZ 221.33  
VS -16.02

MD 3338 TVD 3337.49  
INC 2.35 AZ 207.19  
VS -18.05

Pierre (3100' MD - 3200' MD)

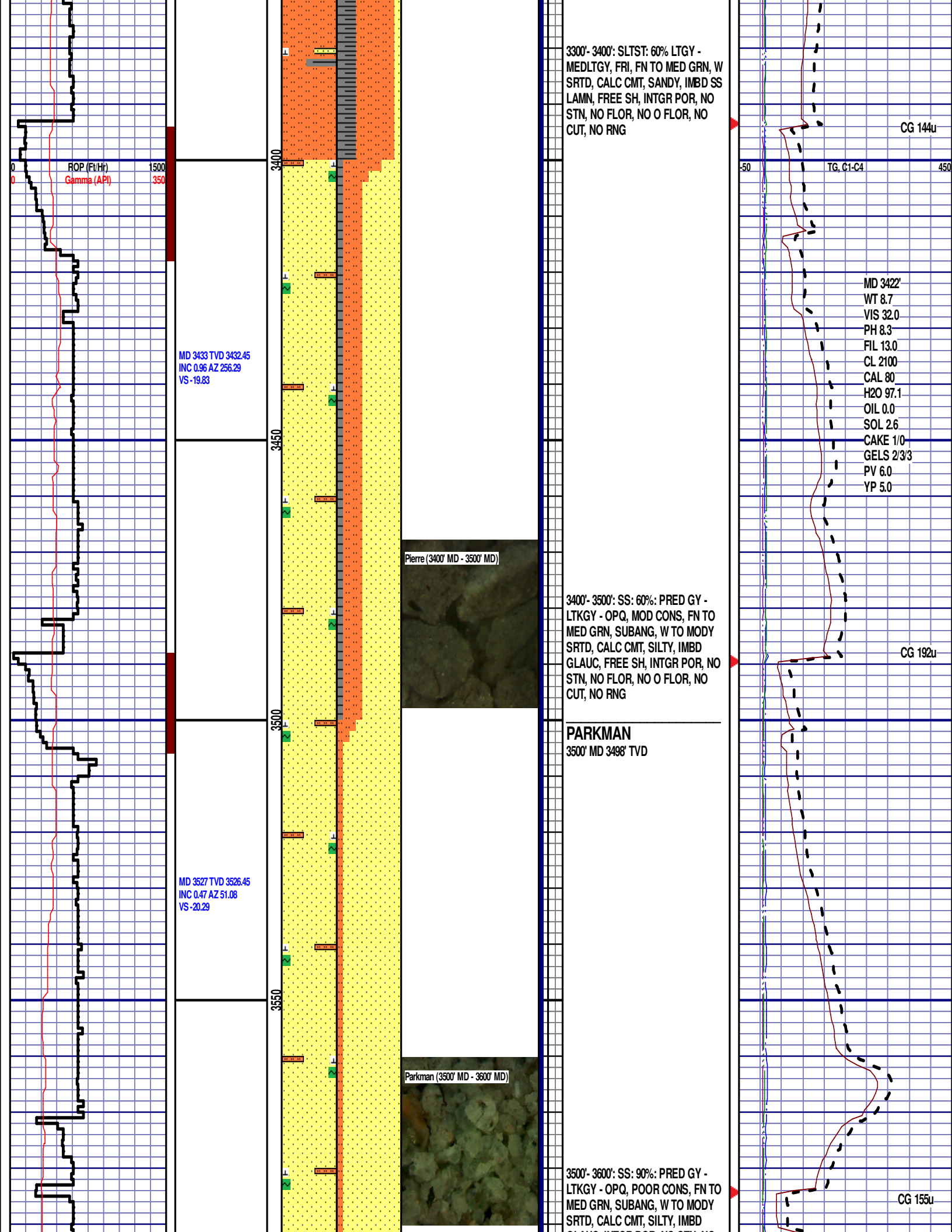


3100'- 3200': SLTST: 80% LTGY -  
MEDLTGY, FRI, FN TO MED GRN, W  
SRTD, CALC CMT, SANDY, IMBD  
GLAUC, IMBD SS LAMN, FREE SH,  
INTGR POR, NO STN, NO FLOR, NO  
O FLOR, NO CUT, NO RNG

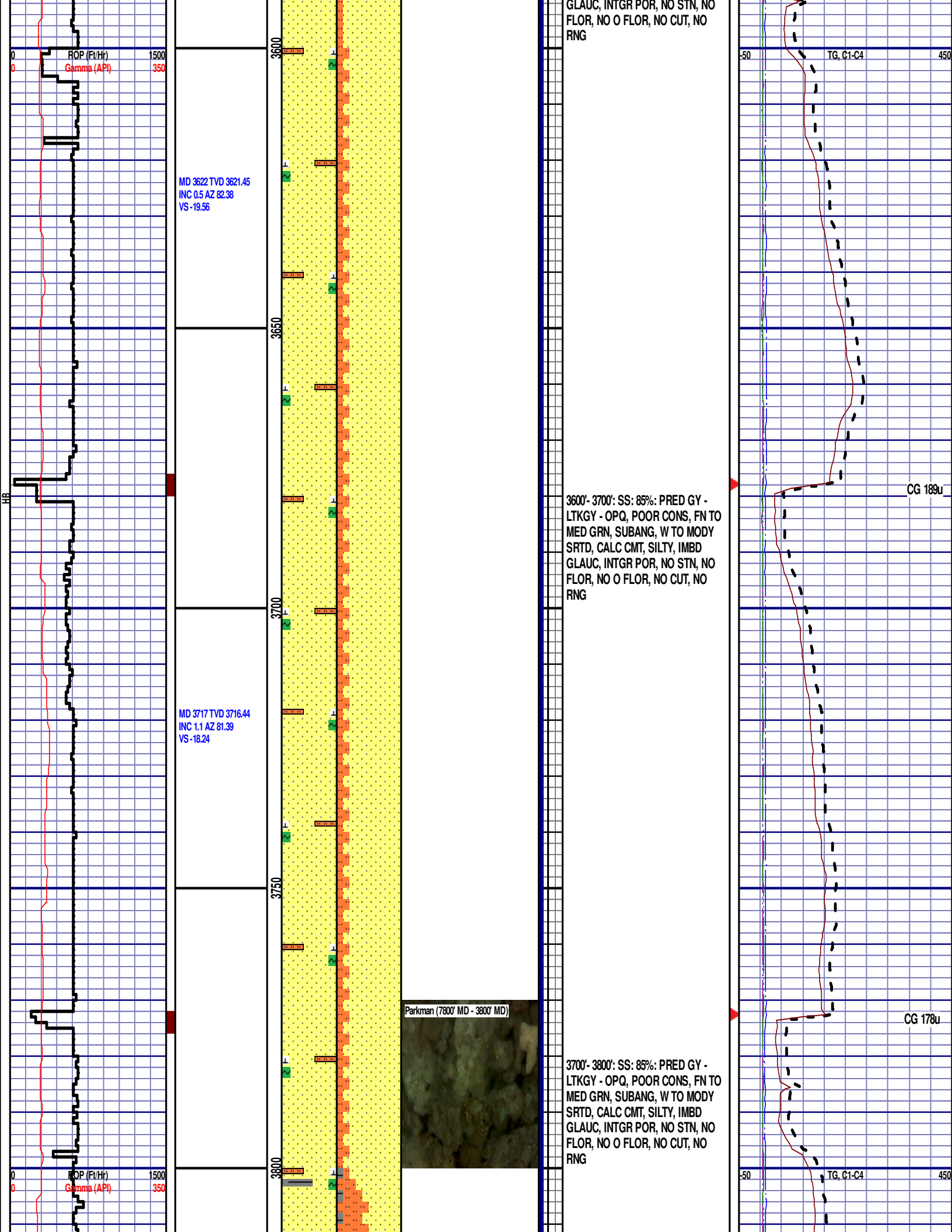
3200'- 3300': SLTST: 60% LTGY -  
MEDLTGY, FRI, FN TO MED GRN, W  
SRTD, CALC CMT, SANDY, IMBD SS  
LAMN, FREE SH, INTGR POR, NO  
STN, NO FLOR, NO O FLOR, NO  
CUT, NO RNG

50 450  
TG, C1-C4  
CG 113u

CG 126u







MD 3811 TVD 3810.42  
INC 1.18 AZ 85.23  
VS -16.37

MD 3906 TVD 3905.4  
INC 0.96 AZ 74.22  
VS -14.62

MD 4001 TVD 4000.39  
INC 0.56 AZ 74.32  
VS -13.39

ROP (Ft/Hr) 1500  
Gamma (API) 350

3850

3900

3950

4000

3800'- 3900': SS: 55%: PRED GY -  
LTKGY - OPQ, POOR CONS, FN TO  
MED GRN, SUBANG, W TO MODY  
SRTD, CALC CMT, SILTY, TRC FREE  
SH, IMBD GLAUC, INTGR POR, NO  
STN, NO FLOR, NO O FLOR, NO  
CUT, NO RNG

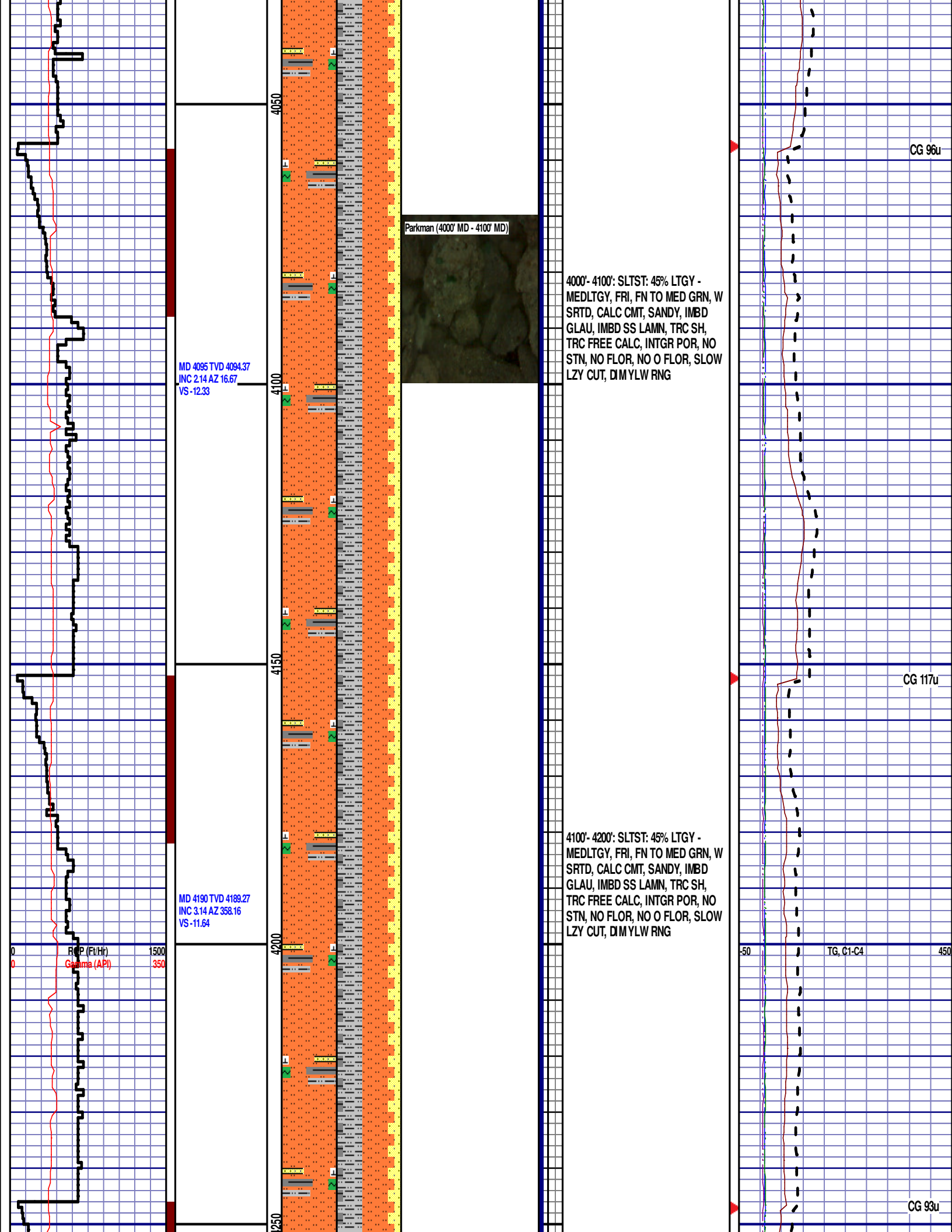
3900'- 4000': SLTST: 65% LTGY -  
MEDLTGY, FRI, FN TO MED GRN, W  
SRTD, CALC CMT, SANDY, IMBD  
GLAU, IMBD SS LAMN, TRC SH,  
INTGR POR, NO STN, NO FLOR, NO  
O FLOR, SLOW LZY CUT, DIM YLW  
RNG

CG 127u

CG 95u

-50 TG, C1-C4 450





Parkman (4000' MD - 4100' MD)

4000'- 4100': SLTST: 45% LTGY -  
MEDLTGY, FRI, FN TO MED GRN, W  
SRTD, CALC CMT, SANDY, IMBD  
GLAU, IMBD SS LAMN, TRC SH,  
TRC FREE CALC, INTGR POR, NO  
STN, NO FLOR, NO O FLOR, SLOW  
LZY CUT, DIM YLW RNG

4100'- 4200': SLTST: 45% LTGY -  
MEDLTGY, FRI, FN TO MED GRN, W  
SRTD, CALC CMT, SANDY, IMBD  
GLAU, IMBD SS LAMN, TRC SH,  
TRC FREE CALC, INTGR POR, NO  
STN, NO FLOR, NO O FLOR, SLOW  
LZY CUT, DIM YLW RNG

RCP (Ft/Hr)  
Gamma (API)

1500  
350

TG, C1-C4

450

MD 4285 TVD 4284.08  
INC 4.07 AZ 3.3  
VS -11.16

MD 4380 TVD 4378.75  
INC 5.49 AZ 1.91  
VS -10.32

Parkman (4200' MD - 4300' MD)

4200'- 4300': SLTST: 45% LTGY -  
MEDLTGY, FRI, FN TO MED GRN, W  
SRTD, CALC CMT, SANDY, IMBD  
GLAU, IMBD SS LAMN, TRC SH,  
TRC FREE CALC, INTGR POR, NO  
STN, NO FLOR, NO O FLOR, SLOW  
LZY CUT, DIM YLW RNG

SUSSEX  
4321' MD 4320' TVD

Sussex (4300' MD - 4400' MD)

4300'- 4400': SS: 55%: PRED GY -  
LTKGY - OPQ, POOR CONS, FN TO  
MED GRN, SUBANG, W TO MODY  
SRTD, CALC CMT, SILTY, IMBD  
GLAUC, INTGR POR, NO STN, NO  
FLOR, NO O FLOR, NO CUT, NO  
RNG

CG 117u

TG, C1-C4

CG 108u

MD 4475 TVD 4473.14  
INC 7.39 AZ 357.9  
VS -9.73

MD 4569 TVD 4566.1  
INC 9.67 AZ 357.61  
VS -9.41

MD 4664 TVD 4659.52  
INC 11.18 AZ 358.29  
VS -8.95

4400'- 4500': SLTST: 60% LTGY -  
MEDLTGY, FRI, FN TO MED GRN, W  
SRTD, CALC CMT, SANDY, TRC  
IMBD PYR, IMBD SS LAMN, INTGR  
POR, NO STN, NO FLOR, NO O  
FLOR, SLOW LZ Y CUT, DIM YLW  
RNG

4500'- 4600': SLTST: 80% LTGY -  
MEDLTGY, FRI, FN TO MED GRN, W  
SRTD, CALC CMT, SANDY, TRC  
IMBD PYR, IMBD SS LAMN, INTGR  
POR, NO STN, NO FLOR, NO O  
FLOR, SLOW LZ Y CUT, DIM YLW  
RNG

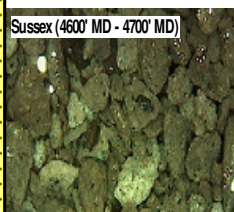
4600'- 4700': SLTST: 70% LTGY -  
MEDLTGY, FRI, FN TO MED GRN, W  
SRTD, CALC CMT, SANDY, TRC  
IMBD PYR, IMBD SS LAMN, INTGR

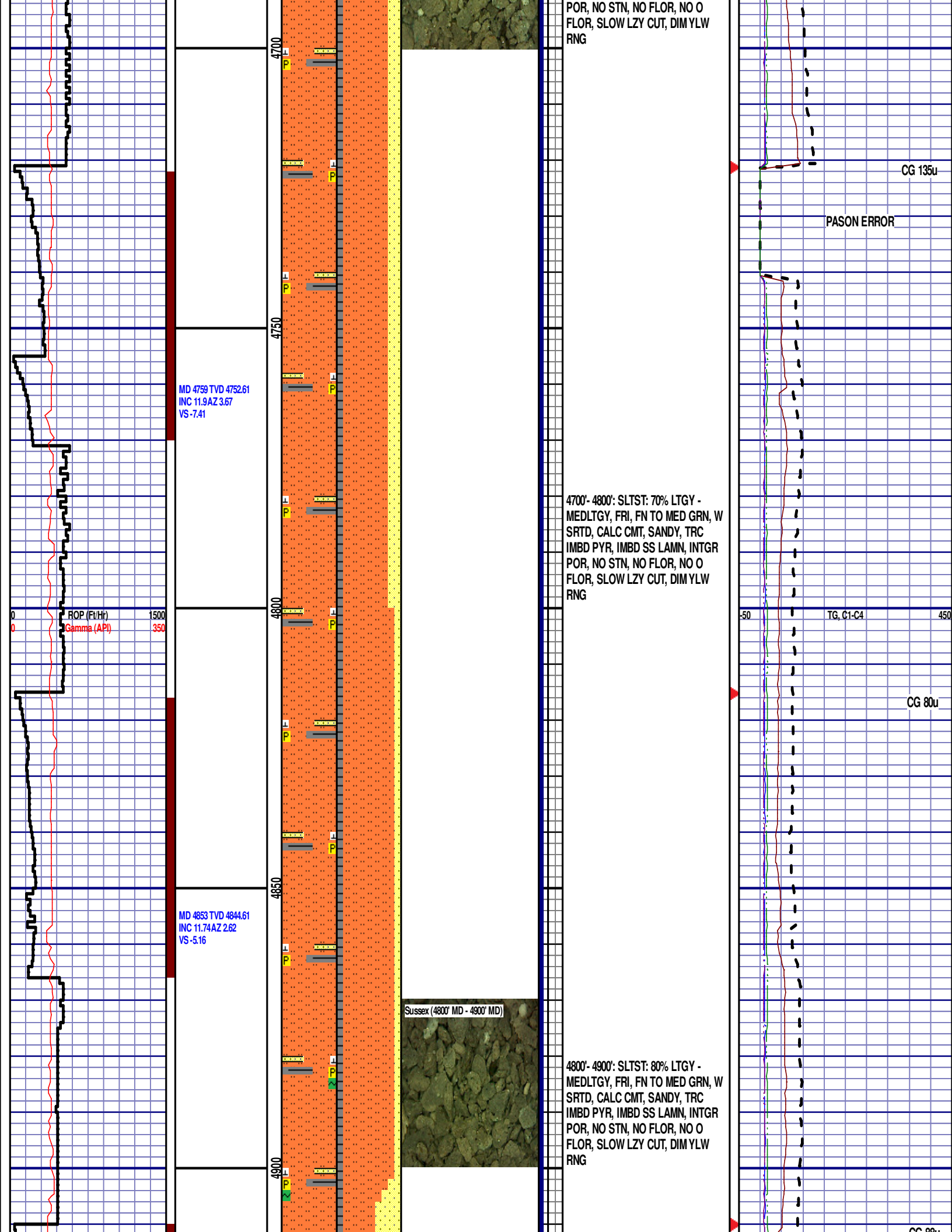
CG 67u

TG, C1-C4

CG 125u

Sussex (4600' MD - 4700' MD)





# SHANNON

4914' MD 4905' TVD

MD 4948 TVD 4937.63  
INC 11.73 AZ 359.08  
VS -3.67

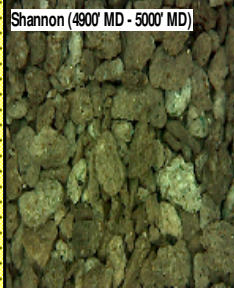
ROP (Ft/Hr) 1500  
Gamma (API) 350

12:01 AM  
12/12/13  
2540 FT/24 HRS  
DAY 03

WOB 6.7K  
PP 2785  
RPM 0  
SPM 56/56

MD 5043 TVD 5030.22  
INC 14.12 AZ 355.53  
VS -3.41

Shannon (4900' MD - 5000' MD)



4900'- 5000': SLTST: 50% LTGY -  
MEDLTGY, FRI, FN TO MED GRN, W  
SRTD, CALC CMT, SANDY, TRC  
IMBD PYR, IMBD GLAUC, IMBD SS  
LAMN, INTGR POR, NO STN, NO  
FLOR, NO O FLOR, SLOW LZ CUT,  
DIM YLW RNG

-50 TG, C1-C4 450

CG N/A

5000'- 5100': SS: 60% : PRED GY -  
LTKGY - OPQ, MOD CONS, FN TO  
MED GRN, SUBANG, W TO MODY  
SRTD, CALC CMT, FREE SH, IMBD  
GLACU, IMBD PYR, SILTY, INTGR  
POR, NO STN, NO FLOR, NO O  
FLOR, SLOW LZ CUT, DIM YLW  
RNG

CG 98u

MD 5138 TVD 5122.82  
INC 11.62 AZ 355.15  
VS -3.8

MD 5233 TVD 5216.24  
INC 9.26 AZ 355.82  
VS -4.1

MD 5327 TVD 5308.77  
INC 11.05 AZ 352.59  
VS -4.78

ROP (Ft/Hr)  
Gamma (API)

1500  
350

5150

5200

5250

5300

5350

Shannon (5200' MD - 5300' MD)



5100'- 5200': SILTY SH: 70%: LTGY -  
MEDLTGY, FRI, FN TO MED GRN, W  
SRTD, CALC CMT, TRC FREE CALC,  
FREE SH, PYR LAMN, SANDY,  
SILTY, INTGR POR, NO STN, NO  
FLOR, NO O FLOR, SLOW LZY CUT,  
DIM YLW RNG

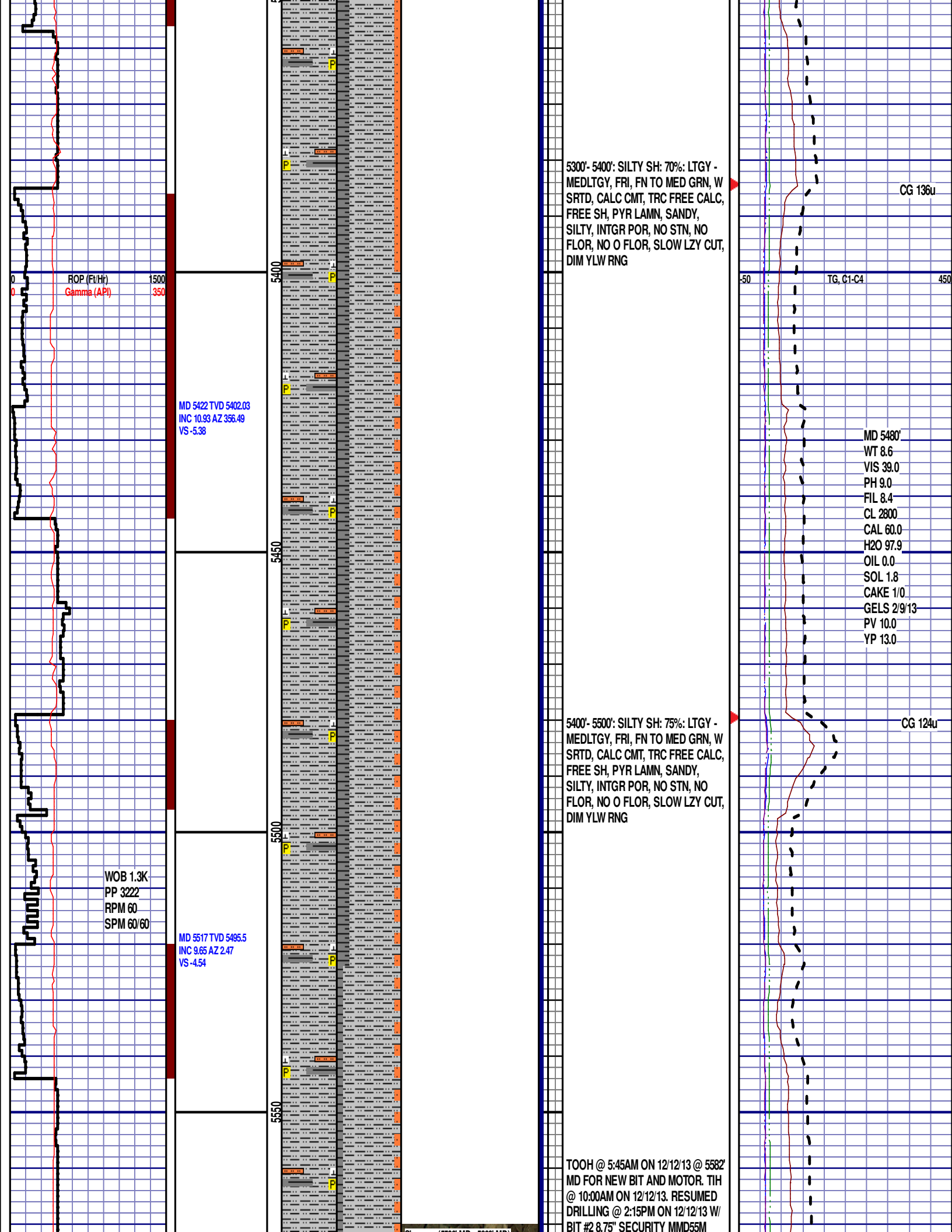
5200'- 5300': SILTY SH: 70%: LTGY -  
MEDLTGY, FRI, FN TO MED GRN, W  
SRTD, CALC CMT, TRC FREE CALC,  
FREE SH, PYR LAMN, SANDY,  
SILTY, INTGR POR, NO STN, NO  
FLOR, NO O FLOR, SLOW LZY CUT,  
DIM YLW RNG

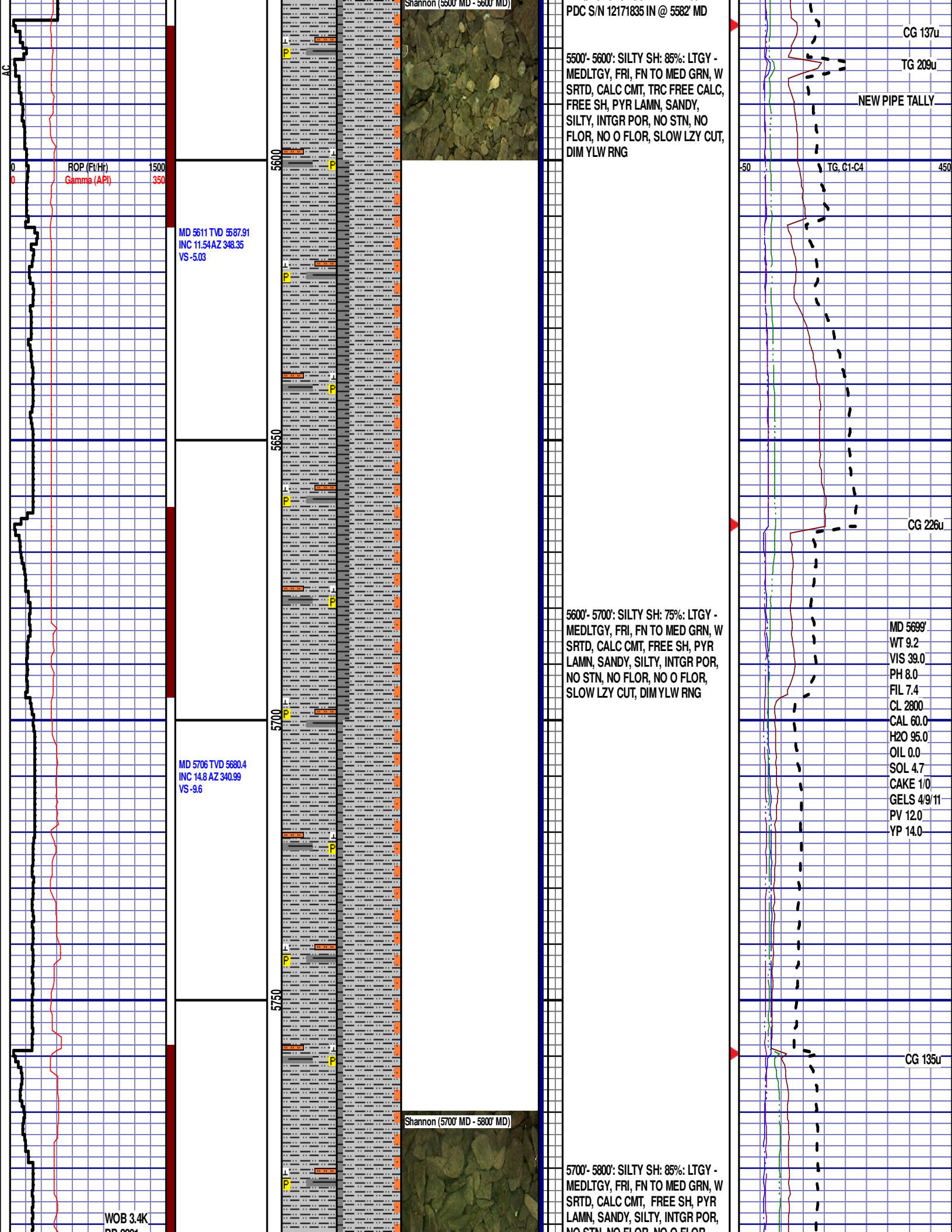
CG 108u

TG, C1-C4

CG N/A







PDC S/N 12171835 IN @ 5582' MD

5500'- 5600': SILTY SH: 85%: LTGY - MEDLTGY, FRI, FN TO MED GRN, W SRTD, CALC CMT, TRC FREE CALC, FREE SH, PYR LAMN, SANDY, SILTY, INTGR POR, NO STN, NO FLOR, NO O FLOR, SLOW LZY CUT, DIM YLW RNG

5600'- 5700': SILTY SH: 75%: LTGY - MEDLTGY, FRI, FN TO MED GRN, W SRTD, CALC CMT, FREE SH, PYR LAMN, SANDY, SILTY, INTGR POR, NO STN, NO FLOR, NO O FLOR, SLOW LZY CUT, DIM YLW RNG

5700'- 5800': SILTY SH: 85%: LTGY - MEDLTGY, FRI, FN TO MED GRN, W SRTD, CALC CMT, FREE SH, PYR LAMN, SANDY, SILTY, INTGR POR, NO STN, NO FLOR, NO O FLOR

CG 137u

TG 209u

NEW PIPE TALLY

TG, C1-C4

CG 226u

MD 5699'  
WT 9.2  
VIS 39.0  
PH 8.0  
FIL 7.4  
CL 2800  
CAL 60.0  
H2O 95.0  
OIL 0.0  
SOL 4.7  
CAKE 1/0  
GELS 49/11  
PV 12.0  
YP 14.0

CG 135u

MD 5611 TVD 5587.91  
INC 11.54 AZ 348.35  
VS -5.03

MD 5706 TVD 5680.4  
INC 14.8 AZ 340.99  
VS -9.6

WOB 3.4K  
PP 2324

PP 2301  
RPM 0  
SPM 114/0

ROP (Ft/Hr)  
Gamma (API)

MD 5800 TVD 5771.36  
INC 14.45 AZ 340.96  
VS -15.92

MD 5895 TVD 5863.02  
INC 16.07 AZ 340.5  
VS -20.44

MD 5933 TVD 5899.58  
INC 15.63 AZ 349.56  
VS -21.6

MD 5990 TVD 5954.46  
INC 15.69 AZ 356.57  
VS -22.5

ROP (Ft/Hr)  
Gamma (API)

NO STN, NO FLOR, NO O FLOR,  
SLOW LZ Y CUT, DIM YLW RNG

TEEPEE BUTTES  
5802' MD 5772' TVD

5800' - 5900': SILTY SH: 60%: LTGY -  
MEDLTGY, FRI, FN TO MED GRN, W  
SR TD, CALC CMT, FREE SH, PYR  
LAMN, SANDY, SILTY, INTGR POR,  
NO STN, NO FLOR, NO O FLOR,  
SLOW LZ Y CUT, DIM YLW RNG

5900' - 6000': SLTST: 45% PRED  
DRKGY - MEDLTGY - OCC WH, FRI,  
FN TO MED GRN, W SR TD, SANDY,  
CALC CMT, FREE SLTY SH, FREE  
SH, IMBD PYR, INTGR POR, NO  
STN, NO FLOR, NO O FLOR, SLOW  
LZ Y CUT, LT DIM YLW RNG

SWITCH TO 30' SAMPLE INTERVAL

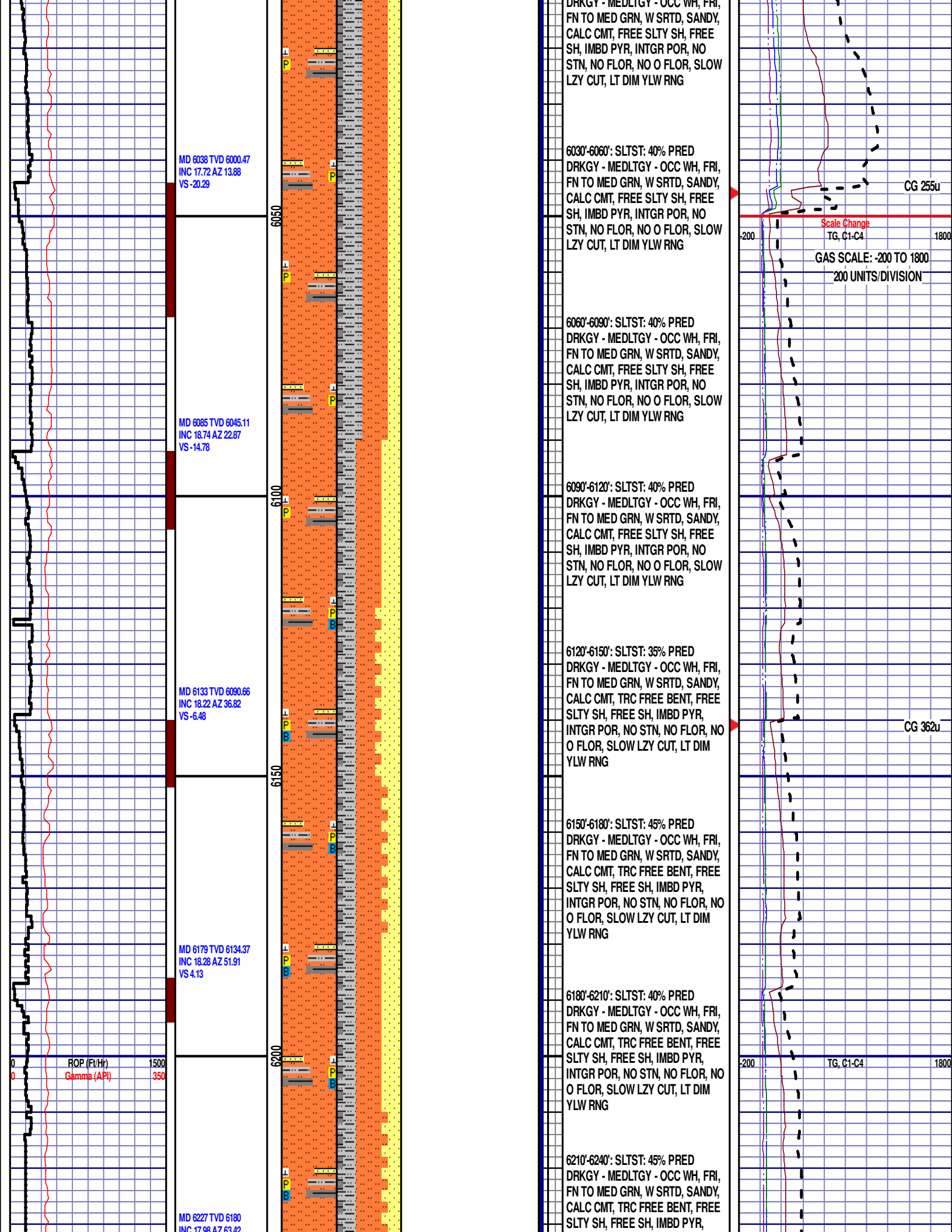
6000' - 6030': SLTST: 40% PRED  
DRKGY - MEDLTGY - OCC WH, FRI,  
FN TO MED GRN, W SR TD, SANDY,  
CALC CMT, FREE SLTY SH, FREE  
SH, IMBD PYR, INTGR POR, NO  
STN, NO FLOR, NO O FLOR, SLOW  
LZ Y CUT, LT DIM YLW RNG

TG, C1-C4

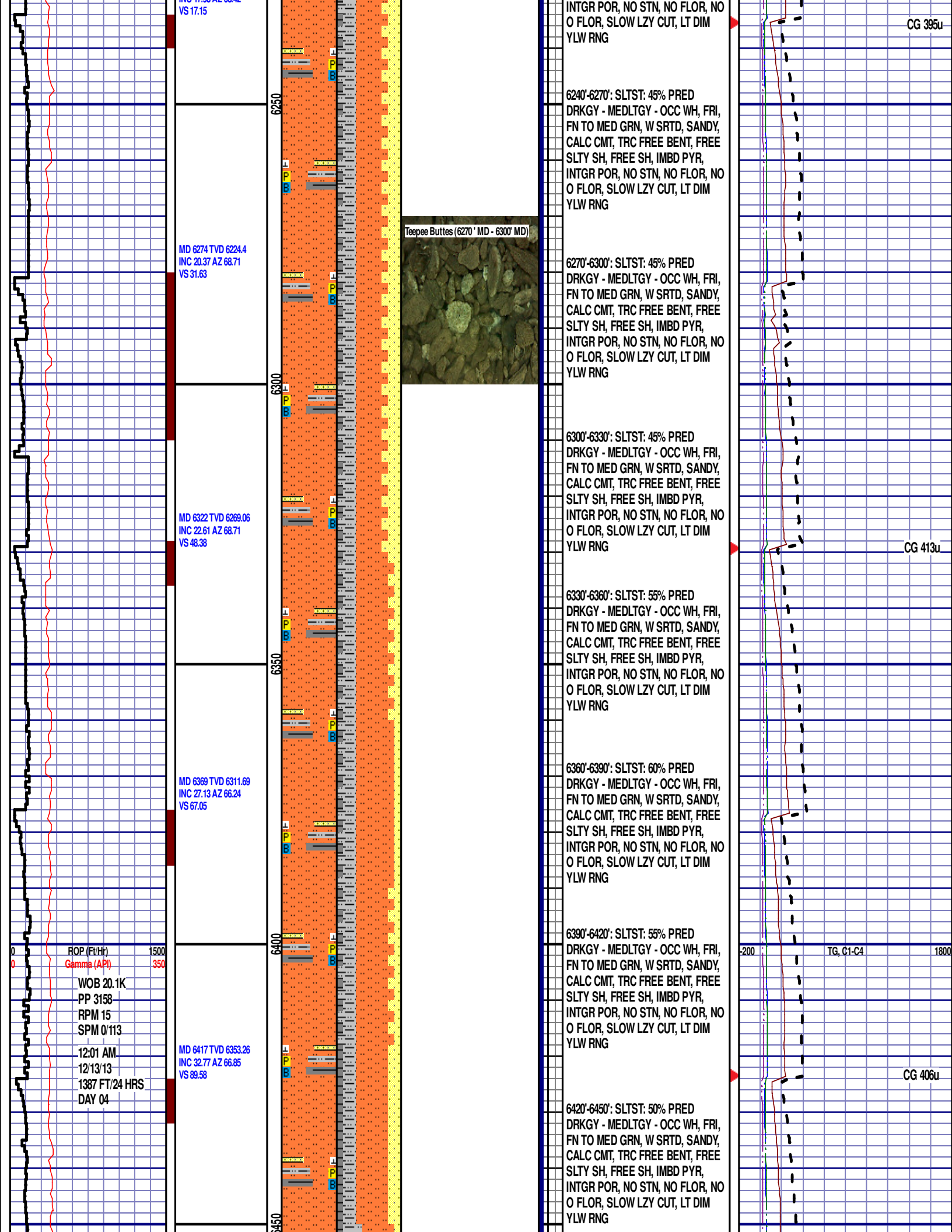
CG 383u

CG 350u

TG, C1-C4







VS 17.15

MD 6274 TVD 6224.4  
INC 20.37 AZ 68.71  
VS 31.63

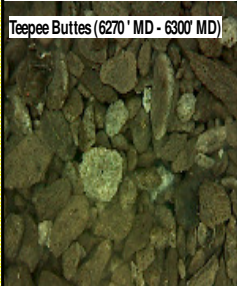
MD 6322 TVD 6269.06  
INC 22.61 AZ 68.71  
VS 48.38

MD 6369 TVD 6311.69  
INC 27.13 AZ 66.24  
VS 67.05

MD 6417 TVD 6353.26  
INC 32.77 AZ 66.85  
VS 89.58

ROP (Ft/Hr) 1500  
Gamma (API) 350

WOB 20.1K  
PP 3158  
RPM 15  
SPM 0/113  
12:01 AM  
12/13/13  
1387 FT/24 HRS  
DAY 04



INTGR POR, NO STN, NO FLOR, NO  
O FLOR, SLOW LZ Y CUT, LT DIM  
YLW RNG

6240'-6270': SLTST: 45% PRED  
DRKGY - MEDLTGY - OCC WH, FRI,  
FN TO MED GRN, W SRTD, SANDY,  
CALC CMT, TRC FREE BENT, FREE  
SLTY SH, FREE SH, IMBD PYR,  
INTGR POR, NO STN, NO FLOR, NO  
O FLOR, SLOW LZ Y CUT, LT DIM  
YLW RNG

6270'-6300': SLTST: 45% PRED  
DRKGY - MEDLTGY - OCC WH, FRI,  
FN TO MED GRN, W SRTD, SANDY,  
CALC CMT, TRC FREE BENT, FREE  
SLTY SH, FREE SH, IMBD PYR,  
INTGR POR, NO STN, NO FLOR, NO  
O FLOR, SLOW LZ Y CUT, LT DIM  
YLW RNG

6300'-6330': SLTST: 45% PRED  
DRKGY - MEDLTGY - OCC WH, FRI,  
FN TO MED GRN, W SRTD, SANDY,  
CALC CMT, TRC FREE BENT, FREE  
SLTY SH, FREE SH, IMBD PYR,  
INTGR POR, NO STN, NO FLOR, NO  
O FLOR, SLOW LZ Y CUT, LT DIM  
YLW RNG

6330'-6360': SLTST: 55% PRED  
DRKGY - MEDLTGY - OCC WH, FRI,  
FN TO MED GRN, W SRTD, SANDY,  
CALC CMT, TRC FREE BENT, FREE  
SLTY SH, FREE SH, IMBD PYR,  
INTGR POR, NO STN, NO FLOR, NO  
O FLOR, SLOW LZ Y CUT, LT DIM  
YLW RNG

6360'-6390': SLTST: 60% PRED  
DRKGY - MEDLTGY - OCC WH, FRI,  
FN TO MED GRN, W SRTD, SANDY,  
CALC CMT, TRC FREE BENT, FREE  
SLTY SH, FREE SH, IMBD PYR,  
INTGR POR, NO STN, NO FLOR, NO  
O FLOR, SLOW LZ Y CUT, LT DIM  
YLW RNG

6390'-6420': SLTST: 55% PRED  
DRKGY - MEDLTGY - OCC WH, FRI,  
FN TO MED GRN, W SRTD, SANDY,  
CALC CMT, TRC FREE BENT, FREE  
SLTY SH, FREE SH, IMBD PYR,  
INTGR POR, NO STN, NO FLOR, NO  
O FLOR, SLOW LZ Y CUT, LT DIM  
YLW RNG

6420'-6450': SLTST: 50% PRED  
DRKGY - MEDLTGY - OCC WH, FRI,  
FN TO MED GRN, W SRTD, SANDY,  
CALC CMT, TRC FREE BENT, FREE  
SLTY SH, FREE SH, IMBD PYR,  
INTGR POR, NO STN, NO FLOR, NO  
O FLOR, SLOW LZ Y CUT, LT DIM  
YLW RNG

CG 395u

CG 413u

CG 406u

200 TG, C1-C4 1800

MD 6464 TVD 6391.79  
INC 37.1 AZ 72.31  
VS 115.33

MD 6512 TVD 6428.67  
INC 42.49 AZ 76.06  
VS 145.34

MD 6559 TVD 6460.76  
INC 51.26 AZ 78.18  
VS 179.16

MD 6607 TVD 6488.62  
INC 57.75 AZ 80.26  
VS 217.91

MD 6653 TVD 6513.14  
INC 57.84 AZ 81.29  
VS 256.65

ROP (Ft/Hr)  
Gamma (API)

1500  
350

6500

6550

6600

6650

Teepee Buttes (6570' MD - 6600' MD)

Teepee Buttes (6600' MD - 6630' MD)

Sharon Springs (6630' MD - 6660' MD)

6450'-6480': SLTST: 45% PRED  
DRKGY - MEDLTGY - OCC WH, FRI,  
FN TO MED GRN, W SRTD, SANDY,  
CALC CMT, FREE SLTY SH, FREE  
SH, IMBD PYR, INTGR POR, NO  
STN, NO FLOR, NO O FLOR, SLOW  
LZY CUT, LT DIM YLW RNG

6480'-6510': SLTY SH: 60% PRED  
DRKGY - MEDLTGY - OCC WH, FRI,  
FN TO MED GRN, W SRTD, SANDY,  
CALC CMT, IMBD PYR, INTGR POR,  
NO STN, NO FLOR, NO O FLOR,  
SLOW LZY CUT, LT DIM YLW RNG

6510'-6540': SLTY SH: 60% PRED  
DRKGY - MEDLTGY - OCC WH, FRI,  
FN TO MED GRN, W SRTD, CALC  
CMT, IMBD PYR, INTGR POR, NO  
STN, NO FLOR, NO O FLOR, SLOW  
LZY CUT, LT DIM YLW RNG

6540'-6570': SLTY SH: 60% PRED  
DRKGY - MEDLTGY - OCC WH, FRI,  
FN TO MED GRN, W SRTD, CALC  
CMT, IMBD PYR, INTGR POR, NO  
STN, NO FLOR, NO O FLOR, SLOW  
LZY CUT, LT DIM YLW RNG

6570'-6600': SLTY SH: 50% PRED  
DRKGY - MEDLTGY - OCC WH, FRI,  
FN TO MED GRN, W SRTD, CALC  
CMT, IMBD PYR, INTGR POR, NO  
STN, NO FLOR, NO O FLOR, SLOW  
LZY CUT, LT DIM YLW RNG

6600'-6630': SH: 50% PRED DRKGY -  
MEDLTGY - OCC WH, FRI, FN TO  
MED GRN, GRTY TO SLTY TXT, W  
SRTD, CALC CMT, FREE SLTST,  
TRC FREE BENT, IMBD PYR, INTGR  
POR, NO STN, NO FLOR, NO O  
FLOR, IMMED STRMG CUT, BRIYL  
RNG

### SHARON SPRINGS

6630' MD 6501' TVD

6630'-6660': SH: 70% PRED DRKGY -  
MEDLTGY - OCC WH, FRI, FN TO  
MED GRN, GRTY TO SLTY TXT, W  
SRTD, CALC CMT, FREE SLTST,  
ABDT FREE BENT, IMBD PYR,  
INTGR POR, NO STN, NO FLOR, NO  
O FLOR, IMMED STRMG CUT,  
BRIYL RNG

6660'-6690': SH: 70% PRED DRKGY -  
MEDLTGY - OCC WH, FRI, FN TO  
MED GRN, GRTY TO SLTY TXT, W

CG 463u

CG 989u

MD 6715'  
WT 10.5  
VIS 40.0  
PH 8.5  
FIL 9.6  
CL 3000



WOB 17.4K  
PP 3367  
RPM 10  
SPM 61/61

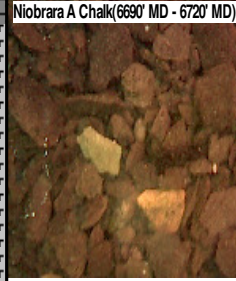
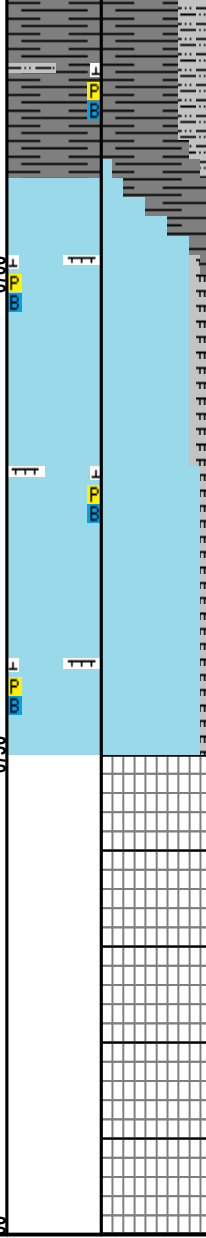
MD 6701 TVD 6538.52  
INC 58.32 AZ 81.68  
VS 297.24

MD 6748 TVD 6562.53  
INC 60.24 AZ 81.94  
VS 337.51

6700

6750

00



MED GRN, GRTY TO SLTY TXT, W  
SRTD, CALC CMT, FREE SLTST,  
TRC FREE BENT, IMBD PYR, INTGR  
POR, NO STN, NO FLOR, NO O  
FLOR, IMMED STRMG CUT, BRIYL  
RNG

### NIORRARA A CHALK

6690' MD 6620' TVD

6690'-6720': CHK: 80% MEDDRKGY -  
MEDLTGY, BLKY TO SUBBLKY,  
GRTY TO SLTY TXT, FRM TO BRIT,  
TRC FREE BENT, FREE PYR, FREE  
MRL, NO STN, 5% FLOR, NO O  
FLOR, IMMED STRMG CUT, BRIYL  
RNG

6720'-6750': CHK: 90% MEDDRKGY -  
MEDLTGY, BLKY TO SUBBLKY,  
GRTY TO SLTY TXT, FRM TO BRIT,  
TRC FREE BENT, FREE PYR, FREE  
MRL, NO STN, 10% FLOR, NO O  
FLOR, IMMED STRMG CUT, BRIYL  
RNG

END OF VERTICAL LOG @ 6750' MD  
ON 12/13/13. CONTINUED ON  
HORIZONTAL LOG.

CAL 60.0  
H2O 89.5  
OIL 0.0  
SOL 10.2  
CAKE 2/0  
GELS  
4/15/20  
PV 16.0  
YP 14.0

CG 1710u

