

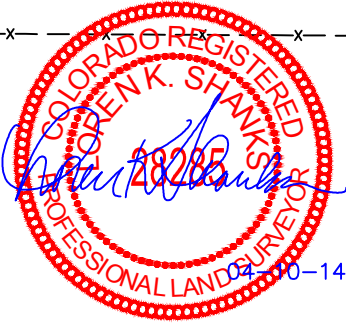
BILL BARRETT CORPORATION

LOCATION DRAWING FOR

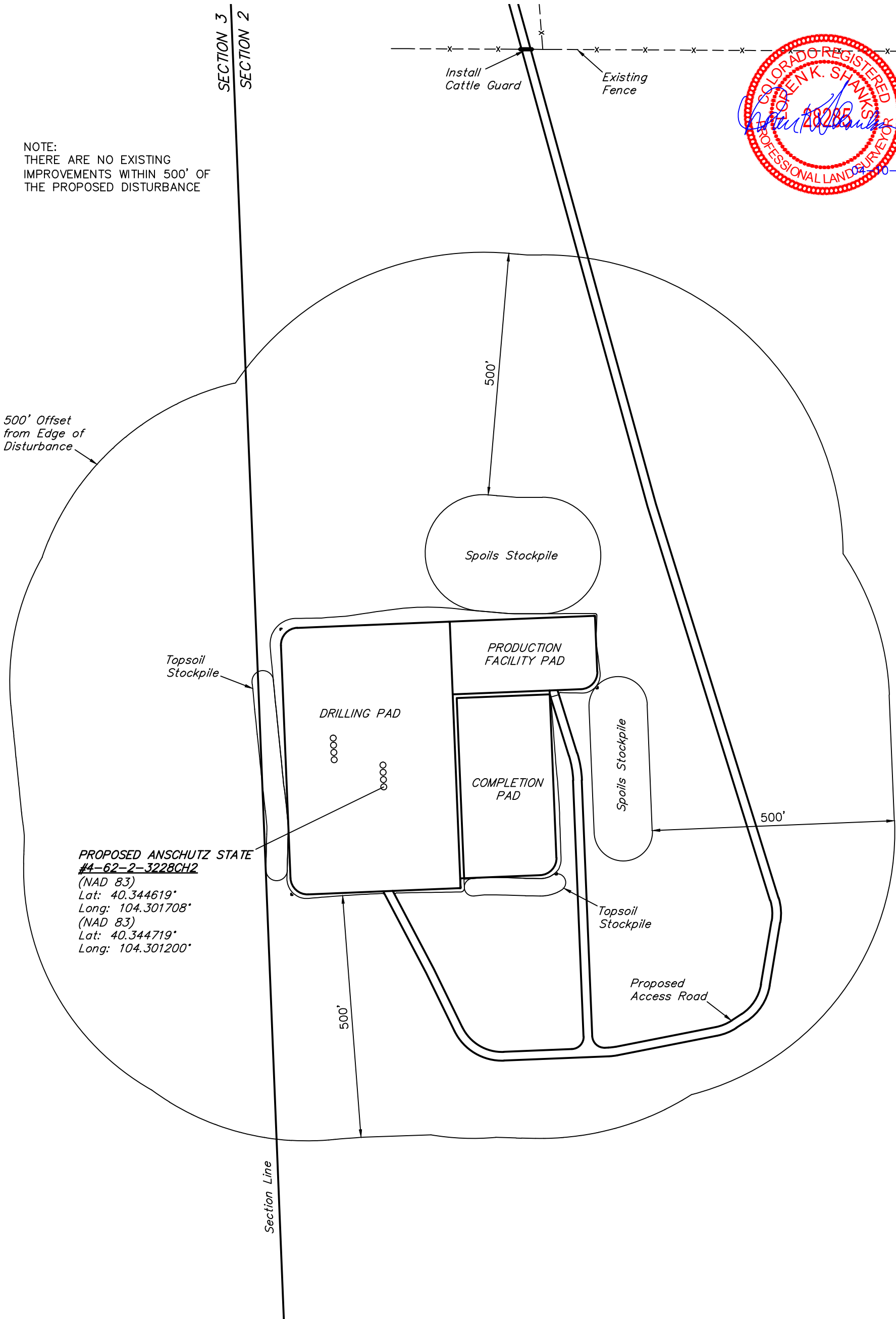
ANSCHUTZ STATE #4-62-2-3228CH2, 3228BH2, 1721CH2, 1721BH2,  
1612CH2, 1612BH2, 0105CH2 & 0105BH2  
SECTION 2, T4N, R62W, 6th P.M.  
SW 1/4 NW 1/4

FIGURE #5

SCALE: 1" = 200'  
DATE SURVEYED: 12-02-13  
SURVEYED BY: DALLAS NIELSEN  
DATE DRAWN: 12-20-13  
DRAWN BY: J.W.  
REVISED: 01-06-14  
REVISED: 02-01-14  
REVISED: 04-03-14 J.S.



NOTE:  
THERE ARE NO EXISTING  
IMPROVEMENTS WITHIN 500' OF  
THE PROPOSED DISTURBANCE



PROPOSED ANSCHUTZ STATE  
#4-62-2-3228CH2  
(NAD 83)  
Lat: 40.344619°  
Long: 104.301708°  
(NAD 83)  
Lat: 40.344719°  
Long: 104.301200°