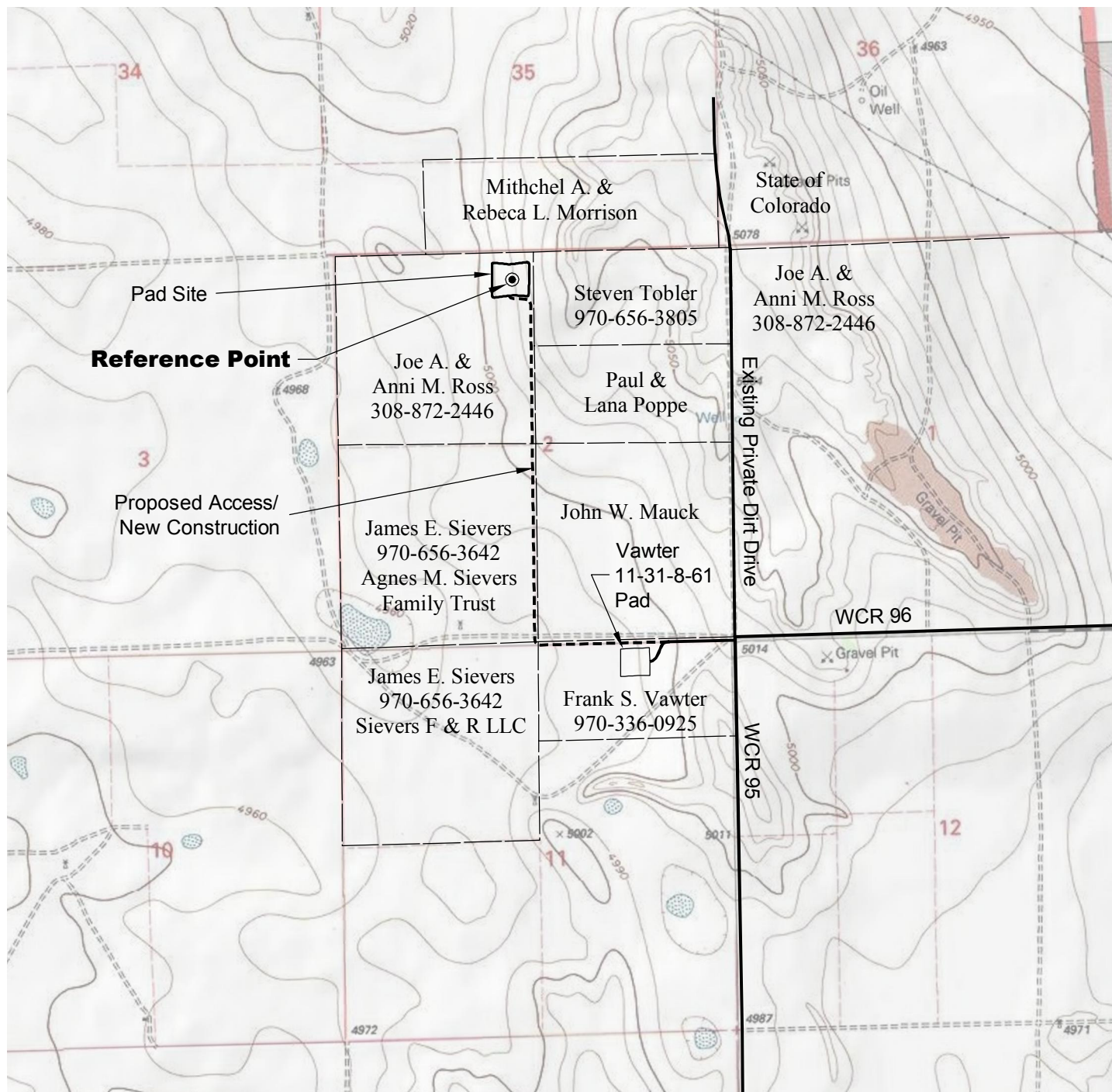


# ACCESS ROAD MAP



## DRIVING DIRECTIONS:

MP 0.0 - Intersection of Highway 14 a.k.a. WCR 90 & Highway 392  
a.k.a. WCR 77 in Briggsdale; East on Highway 14  
MP 8.9 - Left on WCR 95;  
MP 11.9 - Left (West) on access to Ross 1-2-8-61 Pad  
MP 12.1 - Access to Vawter 11-31-8-61 Pad on left; Continue West  
MP 12.4 - Turn right; Continue North to Pad  
MP 13.4 - Ross 1-2-8-61 Pad

10/8/13



Graphic Scale in Feet  
1" = 2000'



**LAND SURVEYING AND MAPPING**  
**LAFAYETTE - WINTER PARK**  
Ph 303 666 0379 Fx 303 665 6320

**CARRIZO NIOBRARA LLC**  
**ROSS 1-2-8-61 PAD**

**LOT 3 SECTION 2 T8N R61W**  
**6th PM WELD COUNTY COLORADO**