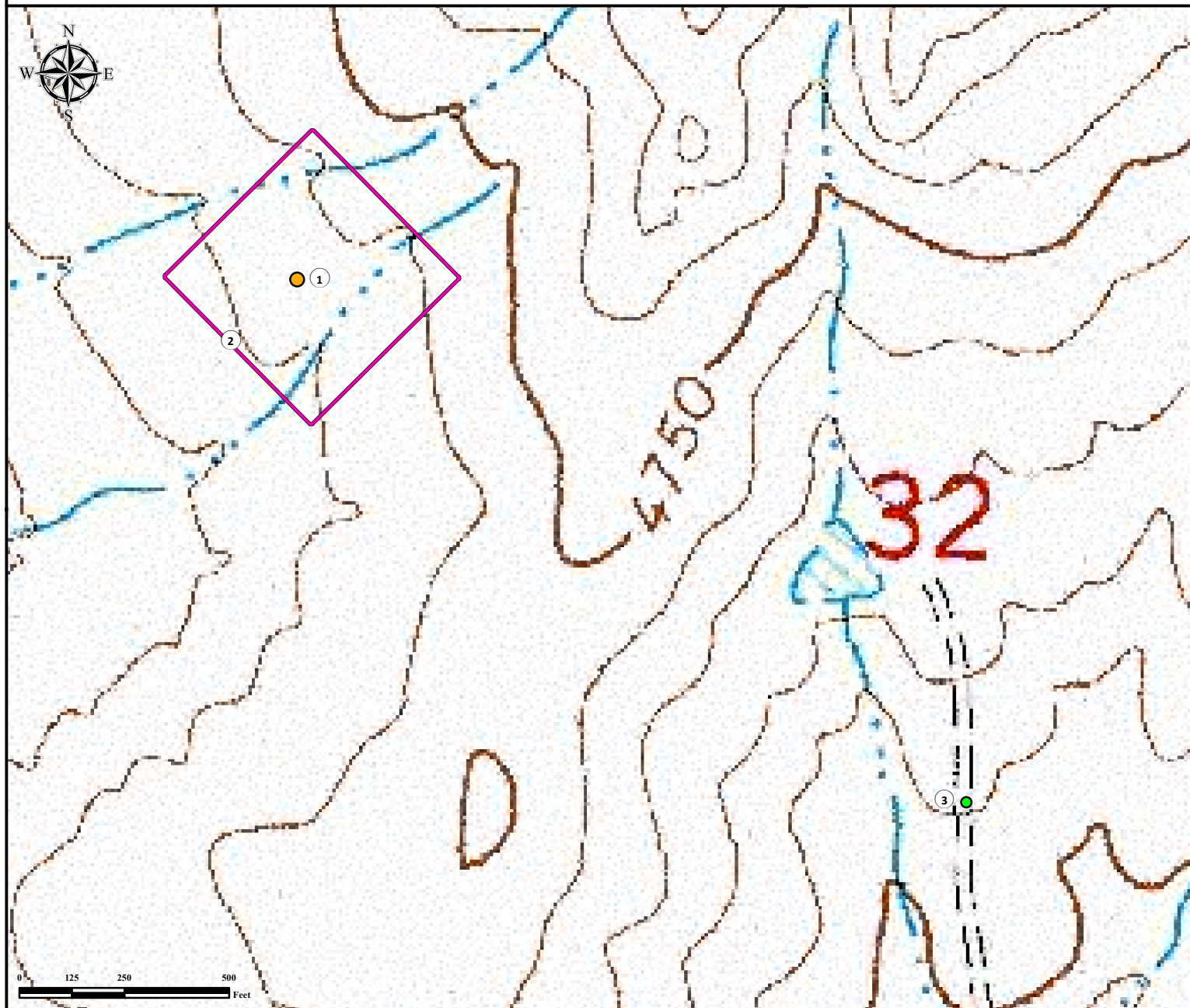


Reference Area Map

HARMON 12-32-16-53

SW¼NW¼ SECTION 32, TOWNSHIP 16 SOUTH, RANGE 53 WEST OF THE 6TH PRINCIPAL MERIDIAN



1. Proposed Well HARMON 12-32-16-53.
2. Operational Disturbance Area.
3. Reference Photo Point.

Legend

● Proposed Well
 ● Reference Photo Point
 Disturbance Area

Reference Location

** Reference Photo Point **

Lat: 38.616298° Long: -103.365370° (NAD83)
Elevation: 4715 Feet

Surface Use: Rangeland



Use our resources to find yours!
www.petro-fs.com
(303) 928-7128

Field Date: 03/25/2014
Drafting Date: 05/29/2014
Drafted by: SMG
Checked by: DRF
Revision:

Data Sources:
- Topo courtesy of USGS

Prepared for: **PIONEER NATURAL RESOURCES USA INC.**