



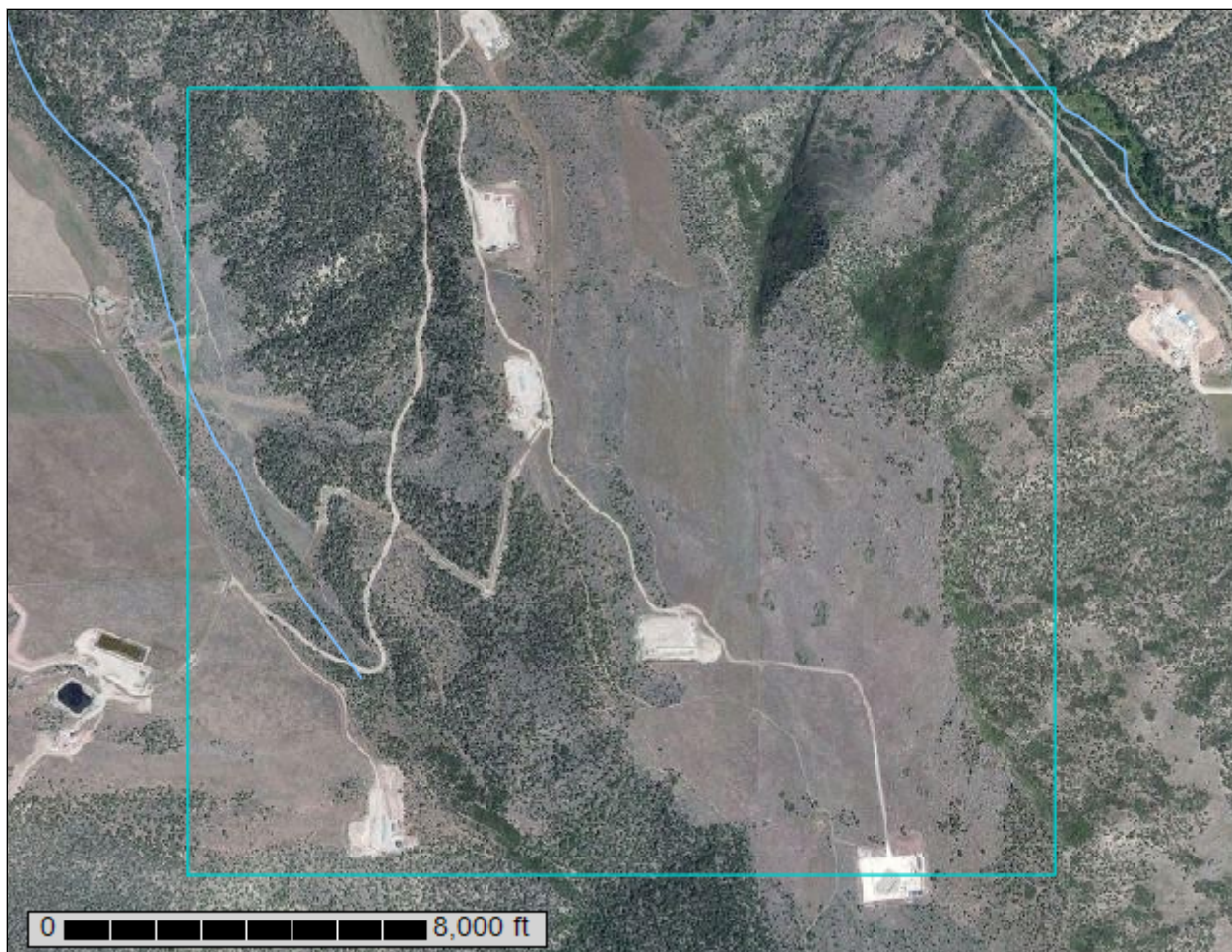
United States
Department of
Agriculture

NRCS

Natural
Resources
Conservation
Service

A product of the National
Cooperative Soil Survey,
a joint effort of the United
States Department of
Agriculture and other
Federal agencies, State
agencies including the
Agricultural Experiment
Stations, and local
participants

Custom Soil Resource Report for Rifle Area, Colorado, Parts of Garfield and Mesa Counties



Preface

Soil surveys contain information that affects land use planning in survey areas. They highlight soil limitations that affect various land uses and provide information about the properties of the soils in the survey areas. Soil surveys are designed for many different users, including farmers, ranchers, foresters, agronomists, urban planners, community officials, engineers, developers, builders, and home buyers. Also, conservationists, teachers, students, and specialists in recreation, waste disposal, and pollution control can use the surveys to help them understand, protect, or enhance the environment.

Various land use regulations of Federal, State, and local governments may impose special restrictions on land use or land treatment. Soil surveys identify soil properties that are used in making various land use or land treatment decisions. The information is intended to help the land users identify and reduce the effects of soil limitations on various land uses. The landowner or user is responsible for identifying and complying with existing laws and regulations.

Although soil survey information can be used for general farm, local, and wider area planning, onsite investigation is needed to supplement this information in some cases. Examples include soil quality assessments (<http://www.nrcs.usda.gov/wps/portal/nrcs/main/soils/health/>) and certain conservation and engineering applications. For more detailed information, contact your local USDA Service Center (<http://offices.sc.egov.usda.gov/locator/app?agency=nrcs>) or your NRCS State Soil Scientist (http://www.nrcs.usda.gov/wps/portal/nrcs/detail/soils/contactus/?cid=nrcs142p2_053951).

Great differences in soil properties can occur within short distances. Some soils are seasonally wet or subject to flooding. Some are too unstable to be used as a foundation for buildings or roads. Clayey or wet soils are poorly suited to use as septic tank absorption fields. A high water table makes a soil poorly suited to basements or underground installations.

The National Cooperative Soil Survey is a joint effort of the United States Department of Agriculture and other Federal agencies, State agencies including the Agricultural Experiment Stations, and local agencies. The Natural Resources Conservation Service (NRCS) has leadership for the Federal part of the National Cooperative Soil Survey.

Information about soils is updated periodically. Updated information is available through the NRCS Web Soil Survey, the site for official soil survey information.

The U.S. Department of Agriculture (USDA) prohibits discrimination in all its programs and activities on the basis of race, color, national origin, age, disability, and where applicable, sex, marital status, familial status, parental status, religion, sexual orientation, genetic information, political beliefs, reprisal, or because all or a part of an individual's income is derived from any public assistance program. (Not all prohibited bases apply to all programs.) Persons with disabilities who require alternative means

for communication of program information (Braille, large print, audiotape, etc.) should contact USDA's TARGET Center at (202) 720-2600 (voice and TDD). To file a complaint of discrimination, write to USDA, Director, Office of Civil Rights, 1400 Independence Avenue, S.W., Washington, D.C. 20250-9410 or call (800) 795-3272 (voice) or (202) 720-6382 (TDD). USDA is an equal opportunity provider and employer.

Contents

Preface	2
How Soil Surveys Are Made	5
Soil Map	7
Soil Map.....	8
Legend.....	9
Map Unit Legend.....	10
Map Unit Descriptions.....	10
Rifle Area, Colorado, Parts of Garfield and Mesa Counties.....	12
44—Morval loam, 3 to 12 percent slopes.....	12
45—Morval-Tridell complex, 6 to 25 percent slopes.....	12
65—Torrifluvents, nearly level.....	14
66—Torriorthents-Camborthids-Rock outcrop complex, steep.....	15
67—Torriorthents-Rock outcrop complex, steep.....	17
68—Vale silt loam, 3 to 6 percent slopes.....	18
69—Vale silt loam, 6 to 12 percent slopes.....	19
71—Villa Grove-Zoltay loams, 15 to 30 percent slopes.....	20
References	22

How Soil Surveys Are Made

Soil surveys are made to provide information about the soils and miscellaneous areas in a specific area. They include a description of the soils and miscellaneous areas and their location on the landscape and tables that show soil properties and limitations affecting various uses. Soil scientists observed the steepness, length, and shape of the slopes; the general pattern of drainage; the kinds of crops and native plants; and the kinds of bedrock. They observed and described many soil profiles. A soil profile is the sequence of natural layers, or horizons, in a soil. The profile extends from the surface down into the unconsolidated material in which the soil formed or from the surface down to bedrock. The unconsolidated material is devoid of roots and other living organisms and has not been changed by other biological activity.

Currently, soils are mapped according to the boundaries of major land resource areas (MLRAs). MLRAs are geographically associated land resource units that share common characteristics related to physiography, geology, climate, water resources, soils, biological resources, and land uses (USDA, 2006). Soil survey areas typically consist of parts of one or more MLRA.

The soils and miscellaneous areas in a survey area occur in an orderly pattern that is related to the geology, landforms, relief, climate, and natural vegetation of the area. Each kind of soil and miscellaneous area is associated with a particular kind of landform or with a segment of the landform. By observing the soils and miscellaneous areas in the survey area and relating their position to specific segments of the landform, a soil scientist develops a concept, or model, of how they were formed. Thus, during mapping, this model enables the soil scientist to predict with a considerable degree of accuracy the kind of soil or miscellaneous area at a specific location on the landscape.

Commonly, individual soils on the landscape merge into one another as their characteristics gradually change. To construct an accurate soil map, however, soil scientists must determine the boundaries between the soils. They can observe only a limited number of soil profiles. Nevertheless, these observations, supplemented by an understanding of the soil-vegetation-landscape relationship, are sufficient to verify predictions of the kinds of soil in an area and to determine the boundaries.

Soil scientists recorded the characteristics of the soil profiles that they studied. They noted soil color, texture, size and shape of soil aggregates, kind and amount of rock fragments, distribution of plant roots, reaction, and other features that enable them to identify soils. After describing the soils in the survey area and determining their properties, the soil scientists assigned the soils to taxonomic classes (units). Taxonomic classes are concepts. Each taxonomic class has a set of soil characteristics with precisely defined limits. The classes are used as a basis for comparison to classify soils systematically. Soil taxonomy, the system of taxonomic classification used in the United States, is based mainly on the kind and character of soil properties and the arrangement of horizons within the profile. After the soil scientists classified and named the soils in the survey area, they compared the

individual soils with similar soils in the same taxonomic class in other areas so that they could confirm data and assemble additional data based on experience and research.

The objective of soil mapping is not to delineate pure map unit components; the objective is to separate the landscape into landforms or landform segments that have similar use and management requirements. Each map unit is defined by a unique combination of soil components and/or miscellaneous areas in predictable proportions. Some components may be highly contrasting to the other components of the map unit. The presence of minor components in a map unit in no way diminishes the usefulness or accuracy of the data. The delineation of such landforms and landform segments on the map provides sufficient information for the development of resource plans. If intensive use of small areas is planned, onsite investigation is needed to define and locate the soils and miscellaneous areas.

Soil scientists make many field observations in the process of producing a soil map. The frequency of observation is dependent upon several factors, including scale of mapping, intensity of mapping, design of map units, complexity of the landscape, and experience of the soil scientist. Observations are made to test and refine the soil-landscape model and predictions and to verify the classification of the soils at specific locations. Once the soil-landscape model is refined, a significantly smaller number of measurements of individual soil properties are made and recorded. These measurements may include field measurements, such as those for color, depth to bedrock, and texture, and laboratory measurements, such as those for content of sand, silt, clay, salt, and other components. Properties of each soil typically vary from one point to another across the landscape.

Observations for map unit components are aggregated to develop ranges of characteristics for the components. The aggregated values are presented. Direct measurements do not exist for every property presented for every map unit component. Values for some properties are estimated from combinations of other properties.

While a soil survey is in progress, samples of some of the soils in the area generally are collected for laboratory analyses and for engineering tests. Soil scientists interpret the data from these analyses and tests as well as the field-observed characteristics and the soil properties to determine the expected behavior of the soils under different uses. Interpretations for all of the soils are field tested through observation of the soils in different uses and under different levels of management. Some interpretations are modified to fit local conditions, and some new interpretations are developed to meet local needs. Data are assembled from other sources, such as research information, production records, and field experience of specialists. For example, data on crop yields under defined levels of management are assembled from farm records and from field or plot experiments on the same kinds of soil.

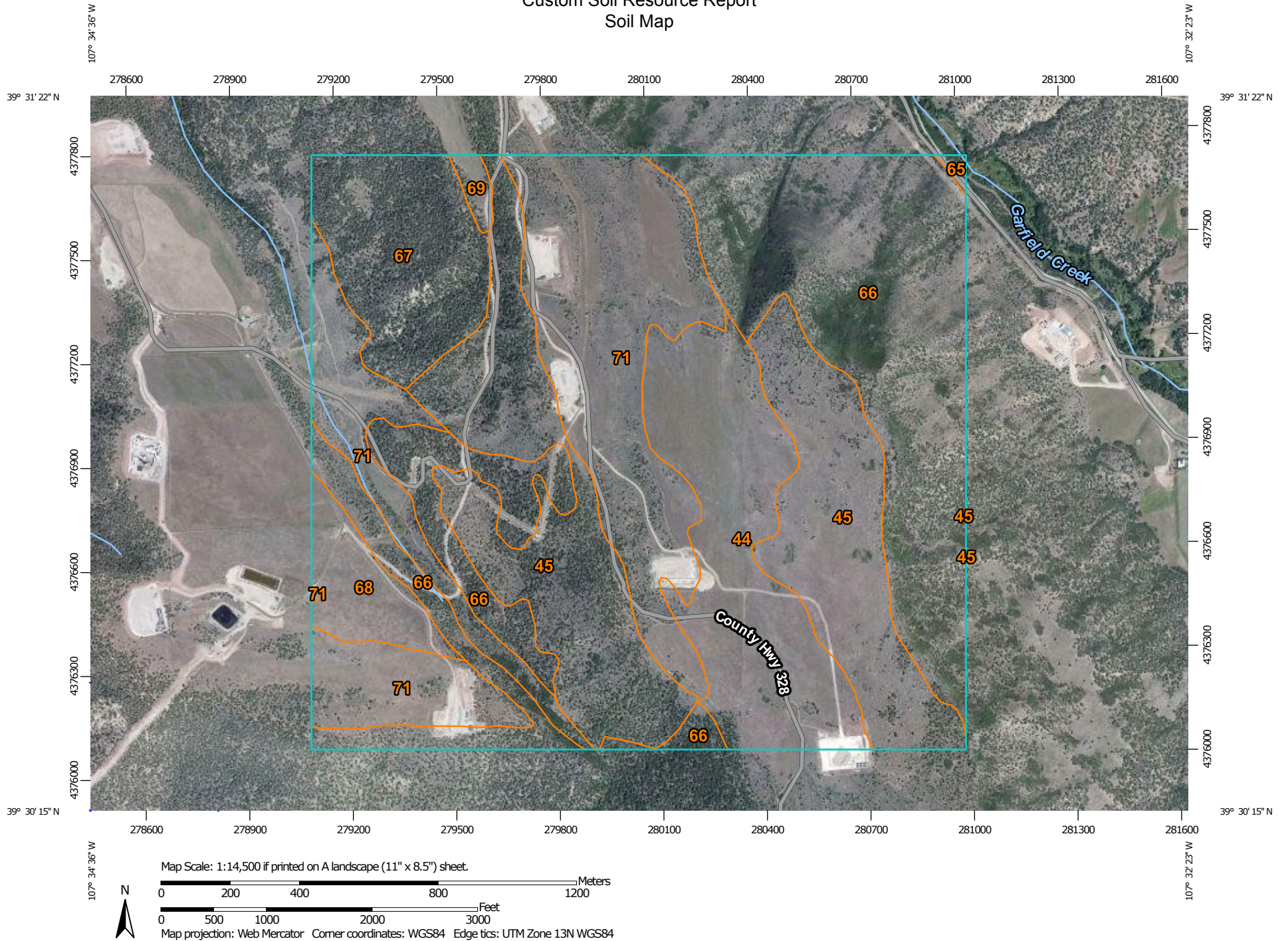
Predictions about soil behavior are based not only on soil properties but also on such variables as climate and biological activity. Soil conditions are predictable over long periods of time, but they are not predictable from year to year. For example, soil scientists can predict with a fairly high degree of accuracy that a given soil will have a high water table within certain depths in most years, but they cannot predict that a high water table will always be at a specific level in the soil on a specific date.

After soil scientists located and identified the significant natural bodies of soil in the survey area, they drew the boundaries of these bodies on aerial photographs and identified each as a specific map unit. Aerial photographs show trees, buildings, fields, roads, and rivers, all of which help in locating boundaries accurately.

Soil Map

The soil map section includes the soil map for the defined area of interest, a list of soil map units on the map and extent of each map unit, and cartographic symbols displayed on the map. Also presented are various metadata about data used to produce the map, and a description of each soil map unit.

Custom Soil Resource Report Soil Map



Custom Soil Resource Report

MAP LEGEND

Area of Interest (AOI)

 Area of Interest (AOI)

Soils

 Soil Map Unit Polygons

 Soil Map Unit Lines

 Soil Map Unit Points

Special Point Features

 Blowout

 Borrow Pit

 Clay Spot


 Closed Depression

 Gravel Pit

 Gravelly Spot

 Landfill

 Lava Flow

 Marsh or swamp

 Mine or Quarry

 Miscellaneous Water


 Perennial Water

 Rock Outcrop


 Saline Spot

 Sandy Spot

 Severely Eroded Spot

 Sinkhole

 Slide or Slip

 Sodic Spot

 Spoil Area

 Stony Spot


 Very Stony Spot

 Wet Spot

 Other

 Special Line Features

Water Features

 Streams and Canals


Transportation

 Rails

 Interstate Highways

 US Routes

 Major Roads

 Local Roads

Background

 Aerial Photography

MAP INFORMATION

The soil surveys that comprise your AOI were mapped at 1:24,000.

Please rely on the bar scale on each map sheet for map measurements.

Source of Map: Natural Resources Conservation Service
Web Soil Survey URL: <http://websoilsurvey.nrcs.usda.gov>
Coordinate System: Web Mercator (EPSG:3857)

Maps from the Web Soil Survey are based on the Web Mercator projection, which preserves direction and shape but distorts distance and area. A projection that preserves area, such as the Albers equal-area conic projection, should be used if more accurate calculations of distance or area are required.

This product is generated from the USDA-NRCS certified data as of the version date(s) listed below.

Soil Survey Area: Rifle Area, Colorado, Parts of Garfield and Mesa Counties

Survey Area Data: Version 7, Dec 23, 2013

Soil map units are labeled (as space allows) for map scales 1:50,000 or larger.

Date(s) aerial images were photographed: Aug 7, 2011—Sep 3, 2011

The orthophoto or other base map on which the soil lines were compiled and digitized probably differs from the background imagery displayed on these maps. As a result, some minor shifting of map unit boundaries may be evident.

Map Unit Legend

Rifle Area, Colorado, Parts of Garfield and Mesa Counties (CO683)			
Map Unit Symbol	Map Unit Name	Acres in AOI	Percent of AOI
44	Morval loam, 3 to 12 percent slopes	102.5	12.7%
45	Morval-Tridell complex, 6 to 25 percent slopes	188.7	23.4%
65	Torrifluvents, nearly level	1.3	0.2%
66	Torriorthents-Camborthids-Rock outcrop complex, steep	231.1	28.6%
67	Torriorthents-Rock outcrop complex, steep	62.7	7.8%
68	Vale silt loam, 3 to 6 percent slopes	24.8	3.1%
69	Vale silt loam, 6 to 12 percent slopes	4.0	0.5%
71	Villa Grove-Zoltay loams, 15 to 30 percent slopes	192.0	23.8%
Totals for Area of Interest		807.0	100.0%

Map Unit Descriptions

The map units delineated on the detailed soil maps in a soil survey represent the soils or miscellaneous areas in the survey area. The map unit descriptions, along with the maps, can be used to determine the composition and properties of a unit.

A map unit delineation on a soil map represents an area dominated by one or more major kinds of soil or miscellaneous areas. A map unit is identified and named according to the taxonomic classification of the dominant soils. Within a taxonomic class there are precisely defined limits for the properties of the soils. On the landscape, however, the soils are natural phenomena, and they have the characteristic variability of all natural phenomena. Thus, the range of some observed properties may extend beyond the limits defined for a taxonomic class. Areas of soils of a single taxonomic class rarely, if ever, can be mapped without including areas of other taxonomic classes. Consequently, every map unit is made up of the soils or miscellaneous areas for which it is named and some minor components that belong to taxonomic classes other than those of the major soils.

Most minor soils have properties similar to those of the dominant soil or soils in the map unit, and thus they do not affect use and management. These are called noncontrasting, or similar, components. They may or may not be mentioned in a particular map unit description. Other minor components, however, have properties and behavioral characteristics divergent enough to affect use or to require different management. These are called contrasting, or dissimilar, components. They generally are in small areas and could not be mapped separately because of the scale used. Some small areas of strongly contrasting soils or miscellaneous areas are identified by a special symbol on the maps. If included in the database for a given area, the

contrasting minor components are identified in the map unit descriptions along with some characteristics of each. A few areas of minor components may not have been observed, and consequently they are not mentioned in the descriptions, especially where the pattern was so complex that it was impractical to make enough observations to identify all the soils and miscellaneous areas on the landscape.

The presence of minor components in a map unit in no way diminishes the usefulness or accuracy of the data. The objective of mapping is not to delineate pure taxonomic classes but rather to separate the landscape into landforms or landform segments that have similar use and management requirements. The delineation of such segments on the map provides sufficient information for the development of resource plans. If intensive use of small areas is planned, however, onsite investigation is needed to define and locate the soils and miscellaneous areas.

An identifying symbol precedes the map unit name in the map unit descriptions. Each description includes general facts about the unit and gives important soil properties and qualities.

Soils that have profiles that are almost alike make up a *soil series*. Except for differences in texture of the surface layer, all the soils of a series have major horizons that are similar in composition, thickness, and arrangement.

Soils of one series can differ in texture of the surface layer, slope, stoniness, salinity, degree of erosion, and other characteristics that affect their use. On the basis of such differences, a soil series is divided into *soil phases*. Most of the areas shown on the detailed soil maps are phases of soil series. The name of a soil phase commonly indicates a feature that affects use or management. For example, Alpha silt loam, 0 to 2 percent slopes, is a phase of the Alpha series.

Some map units are made up of two or more major soils or miscellaneous areas. These map units are complexes, associations, or undifferentiated groups.

A *complex* consists of two or more soils or miscellaneous areas in such an intricate pattern or in such small areas that they cannot be shown separately on the maps. The pattern and proportion of the soils or miscellaneous areas are somewhat similar in all areas. Alpha-Beta complex, 0 to 6 percent slopes, is an example.

An *association* is made up of two or more geographically associated soils or miscellaneous areas that are shown as one unit on the maps. Because of present or anticipated uses of the map units in the survey area, it was not considered practical or necessary to map the soils or miscellaneous areas separately. The pattern and relative proportion of the soils or miscellaneous areas are somewhat similar. Alpha-Beta association, 0 to 2 percent slopes, is an example.

An *undifferentiated group* is made up of two or more soils or miscellaneous areas that could be mapped individually but are mapped as one unit because similar interpretations can be made for use and management. The pattern and proportion of the soils or miscellaneous areas in a mapped area are not uniform. An area can be made up of only one of the major soils or miscellaneous areas, or it can be made up of all of them. Alpha and Beta soils, 0 to 2 percent slopes, is an example.

Some surveys include *miscellaneous areas*. Such areas have little or no soil material and support little or no vegetation. Rock outcrop is an example.

Rifle Area, Colorado, Parts of Garfield and Mesa Counties

44—Morval loam, 3 to 12 percent slopes

Map Unit Setting

Elevation: 6,500 to 8,000 feet

Map Unit Composition

Morval and similar soils: 85 percent

Description of Morval

Setting

Landform: Mesas, valley sides

Down-slope shape: Linear, convex

Across-slope shape: Linear, convex

Parent material: Reworked alluvium derived from sandstone and/or reworked alluvium derived from basalt

Typical profile

H1 - 0 to 5 inches: slightly alkaline, loam

H2 - 5 to 17 inches: moderately alkaline, clay loam

H3 - 17 to 27 inches: moderately alkaline, stony clay loam

H4 - 27 to 60 inches: moderately alkaline, stony loam

Properties and qualities

Slope: 3 to 12 percent

Depth to restrictive feature: More than 80 inches

Natural drainage class: Well drained

Capacity of the most limiting layer to transmit water (Ksat): Moderately high (0.20 to 0.60 in/hr)

Depth to water table: More than 80 inches

Frequency of flooding: None

Frequency of ponding: None

Calcium carbonate, maximum in profile: 25 percent

Salinity, maximum in profile: Nonsaline (0.0 to 2.0 mmhos/cm)

Available water storage in profile: Moderate (about 8.4 inches)

Interpretive groups

Farmland classification: Not prime farmland

Land capability classification (irrigated): 4e

Land capability classification (nonirrigated): 4e

Hydrologic Soil Group: C

Ecological site: Deep Loam (R048AY292CO)

45—Morval-Tridell complex, 6 to 25 percent slopes

Map Unit Setting

Elevation: 6,500 to 8,000 feet

Map Unit Composition

Morval and similar soils: 55 percent

Tridell and similar soils: 30 percent

Description of Morval

Setting

Landform: Mesas, alluvial fans

Down-slope shape: Convex, linear

Across-slope shape: Convex, linear

Parent material: Reworked alluvium derived from sandstone and/or reworked alluvium derived from basalt

Typical profile

H1 - 0 to 5 inches: slightly alkaline, loam

H2 - 5 to 17 inches: moderately alkaline, clay loam

H3 - 17 to 27 inches: moderately alkaline, stony clay loam

H4 - 27 to 60 inches: moderately alkaline, stony loam

Properties and qualities

Slope: 6 to 12 percent

Depth to restrictive feature: More than 80 inches

Natural drainage class: Well drained

Capacity of the most limiting layer to transmit water (Ksat): Moderately high (0.20 to 0.60 in/hr)

Depth to water table: More than 80 inches

Frequency of flooding: None

Frequency of ponding: None

Calcium carbonate, maximum in profile: 25 percent

Salinity, maximum in profile: Nonsaline (0.0 to 2.0 mmhos/cm)

Available water storage in profile: Moderate (about 8.4 inches)

Interpretive groups

Farmland classification: Not prime farmland

Land capability classification (irrigated): None specified

Land capability classification (nonirrigated): 4e

Hydrologic Soil Group: C

Ecological site: Deep Loam (R048AY292CO)

Description of Tridell

Setting

Landform: Mesas, alluvial fans

Down-slope shape: Convex

Across-slope shape: Convex

Parent material: Reworked alluvium derived from sandstone and/or reworked alluvium derived from basalt

Typical profile

H1 - 0 to 10 inches: moderately alkaline, stony loam

H2 - 10 to 60 inches: moderately alkaline, very stony loam

Properties and qualities

Slope: 6 to 25 percent

Depth to restrictive feature: More than 80 inches

Natural drainage class: Well drained

Custom Soil Resource Report

Capacity of the most limiting layer to transmit water (Ksat): Moderately high to high
(0.60 to 6.00 in/hr)

Depth to water table: More than 80 inches

Frequency of flooding: None

Frequency of ponding: None

Calcium carbonate, maximum in profile: 30 percent

Salinity, maximum in profile: Nonsaline (0.0 to 2.0 mmhos/cm)

Available water storage in profile: Low (about 5.2 inches)

Interpretive groups

Farmland classification: Not prime farmland

Land capability classification (irrigated): None specified

Land capability classification (nonirrigated): 6e

Hydrologic Soil Group: A

65—Torrifluents, nearly level

Map Unit Setting

Elevation: 5,000 to 7,000 feet

Mean annual precipitation: 12 to 15 inches

Mean annual air temperature: 46 to 48 degrees F

Frost-free period: 90 to 120 days

Map Unit Composition

Torrifluents and similar soils: 85 percent

Minor components: 15 percent

Description of Torrifluents

Setting

Landform: Rivers, flood plains, distributaries

Down-slope shape: Convex, linear

Across-slope shape: Convex, linear

Parent material: Alluvium

Typical profile

H1 - 0 to 36 inches: moderately alkaline, loam

H2 - 36 to 60 inches: moderately alkaline, sand

Properties and qualities

Slope: 0 to 6 percent

Depth to restrictive feature: More than 80 inches

Natural drainage class: Moderately well drained

Capacity of the most limiting layer to transmit water (Ksat): Moderately high to high
(0.60 to 2.00 in/hr)

Depth to water table: About 12 to 36 inches

Frequency of flooding: Occasional

Frequency of ponding: None

Calcium carbonate, maximum in profile: 5 percent

Gypsum, maximum in profile: 1 percent

Salinity, maximum in profile: Nonsaline to slightly saline (2.0 to 8.0 mmhos/cm)

Custom Soil Resource Report

Sodium adsorption ratio, maximum in profile: 2.0

Available water storage in profile: Moderate (about 7.6 inches)

Interpretive groups

Farmland classification: Not prime farmland

Land capability classification (irrigated): None specified

Land capability classification (nonirrigated): 7w

Hydrologic Soil Group: C

Minor Components

Wann

Percent of map unit: 10 percent

Landform: Terraces

Fluvaquents

Percent of map unit: 5 percent

Landform: Marshes

66—Torriorthents-Camborthids-Rock outcrop complex, steep

Map Unit Setting

Elevation: 5,000 to 8,500 feet

Mean annual precipitation: 10 to 15 inches

Mean annual air temperature: 39 to 46 degrees F

Frost-free period: 80 to 105 days

Map Unit Composition

Torriorthents, steep, and similar soils: 45 percent

Camborthids, steep, and similar soils: 20 percent

Rock outcrop, steep: 15 percent

Description of Torriorthents, Steep

Setting

Landform: Mountainsides

Landform position (two-dimensional): Footslope

Landform position (three-dimensional): Mountainflank, base slope

Down-slope shape: Convex

Across-slope shape: Convex

Parent material: Stony, basaltic alluvium derived from sandstone and shale

Typical profile

H1 - 0 to 4 inches: neutral, variable

H2 - 4 to 30 inches: neutral, fine sandy loam

H3 - 30 to 34 inches: , unweathered bedrock

Properties and qualities

Slope: 15 to 70 percent

Depth to restrictive feature: 4 to 30 inches to lithic bedrock

Natural drainage class: Well drained

Custom Soil Resource Report

Capacity of the most limiting layer to transmit water (Ksat): Moderately low to moderately high (0.06 to 0.20 in/hr)
Depth to water table: More than 80 inches
Frequency of flooding: None
Frequency of ponding: None
Calcium carbonate, maximum in profile: 5 percent
Salinity, maximum in profile: Nonsaline (0.0 to 2.0 mmhos/cm)
Available water storage in profile: Very low (about 2.4 inches)

Interpretive groups

Farmland classification: Not prime farmland
Land capability classification (irrigated): None specified
Land capability classification (nonirrigated): 7e
Hydrologic Soil Group: D

Description of Camborthids, Steep

Setting

Landform: Mountainsides
Landform position (two-dimensional): Footslope
Landform position (three-dimensional): Mountainflank, base slope
Down-slope shape: Convex
Across-slope shape: Convex
Parent material: Stony, basaltic alluvium derived from sandstone and shale

Typical profile

H1 - 0 to 4 inches: neutral, variable
H2 - 4 to 30 inches: neutral, clay loam
H3 - 30 to 34 inches: , unweathered bedrock

Properties and qualities

Slope: 15 to 65 percent
Depth to restrictive feature: 15 to 60 inches to lithic bedrock
Natural drainage class: Well drained
Capacity of the most limiting layer to transmit water (Ksat): Moderately low to moderately high (0.06 to 0.20 in/hr)
Depth to water table: More than 80 inches
Frequency of flooding: None
Frequency of ponding: None
Calcium carbonate, maximum in profile: 10 percent
Gypsum, maximum in profile: 2 percent
Salinity, maximum in profile: Nonsaline (0.0 to 2.0 mmhos/cm)
Available water storage in profile: Low (about 4.0 inches)

Interpretive groups

Farmland classification: Not prime farmland
Land capability classification (irrigated): None specified
Land capability classification (nonirrigated): 7e
Hydrologic Soil Group: C

Description of Rock Outcrop, Steep

Setting

Landform: Mountainsides
Landform position (three-dimensional): Free face
Down-slope shape: Convex
Across-slope shape: Convex

Typical profile

H1 - 0 to 60 inches: , unweathered bedrock

Properties and qualities

Slope: 15 to 70 percent

Depth to restrictive feature: 0 inches to paralithic bedrock

Capacity of the most limiting layer to transmit water (Ksat): Very low to moderately high (0.00 to 0.20 in/hr)

Available water storage in profile: Very low (about 0.0 inches)

Interpretive groups

Farmland classification: Not prime farmland

Land capability classification (irrigated): None specified

Land capability classification (nonirrigated): 8s

67—Torriorthents-Rock outcrop complex, steep

Map Unit Setting

Elevation: 5,800 to 8,500 feet

Mean annual precipitation: 10 to 15 inches

Mean annual air temperature: 39 to 46 degrees F

Frost-free period: 80 to 105 days

Map Unit Composition

Torriorthents, steep, and similar soils: 60 percent

Rock outcrop, steep: 25 percent

Description of Torriorthents, Steep

Setting

Landform: Mountainsides

Landform position (two-dimensional): Footslope

Landform position (three-dimensional): Mountainflank, base slope

Down-slope shape: Concave, convex

Across-slope shape: Concave, convex

Parent material: Stony, basaltic alluvium derived from sandstone and shale

Typical profile

H1 - 0 to 4 inches: neutral, variable

H2 - 4 to 30 inches: neutral, fine sandy loam

H3 - 30 to 34 inches: , unweathered bedrock

Properties and qualities

Slope: 15 to 70 percent

Depth to restrictive feature: 4 to 30 inches to lithic bedrock

Natural drainage class: Well drained

Capacity of the most limiting layer to transmit water (Ksat): Moderately low to moderately high (0.06 to 0.20 in/hr)

Depth to water table: More than 80 inches

Frequency of flooding: None

Custom Soil Resource Report

Frequency of ponding: None
Calcium carbonate, maximum in profile: 5 percent
Salinity, maximum in profile: Nonsaline (0.0 to 2.0 mmhos/cm)
Available water storage in profile: Very low (about 2.4 inches)

Interpretive groups

Farmland classification: Not prime farmland
Land capability classification (irrigated): None specified
Land capability classification (nonirrigated): 7e
Hydrologic Soil Group: D

Description of Rock Outcrop, Steep

Setting

Landform: Mountainsides
Landform position (three-dimensional): Free face
Down-slope shape: Convex
Across-slope shape: Convex

Typical profile

H1 - 0 to 60 inches: , unweathered bedrock

Properties and qualities

Slope: 15 to 70 percent
Depth to restrictive feature: 0 inches to paralithic bedrock
Capacity of the most limiting layer to transmit water (Ksat): Very low to moderately high (0.00 to 0.20 in/hr)
Available water storage in profile: Very low (about 0.0 inches)

Interpretive groups

Farmland classification: Not prime farmland
Land capability classification (irrigated): None specified
Land capability classification (nonirrigated): 8s

68—Vale silt loam, 3 to 6 percent slopes

Map Unit Setting

Elevation: 5,000 to 7,200 feet

Map Unit Composition

Vale and similar soils: 90 percent

Description of Vale

Setting

Landform: Terraces, mesas, alluvial fans
Landform position (three-dimensional): Tread
Down-slope shape: Convex, linear
Across-slope shape: Convex, linear
Parent material: Calcareous eolian deposits

Typical profile

H1 - 0 to 7 inches: neutral, silt loam
H2 - 7 to 11 inches: neutral, silt loam
H3 - 11 to 26 inches: neutral, silty clay loam
H4 - 26 to 60 inches: moderately alkaline, silt loam

Properties and qualities

Slope: 3 to 6 percent
Depth to restrictive feature: More than 80 inches
Natural drainage class: Well drained
Capacity of the most limiting layer to transmit water (Ksat): Moderately high (0.20 to 0.60 in/hr)
Depth to water table: More than 80 inches
Frequency of flooding: None
Frequency of ponding: None
Calcium carbonate, maximum in profile: 15 percent
Salinity, maximum in profile: Nonsaline (0.0 to 2.0 mmhos/cm)
Available water storage in profile: High (about 10.5 inches)

Interpretive groups

Farmland classification: Prime farmland if irrigated
Land capability classification (irrigated): 3e
Land capability classification (nonirrigated): 3e
Hydrologic Soil Group: C
Ecological site: Deep Loam (R048AY292CO)

69—Vale silt loam, 6 to 12 percent slopes

Map Unit Setting

Elevation: 5,000 to 7,200 feet

Map Unit Composition

Vale and similar soils: 90 percent

Description of Vale

Setting

Landform: Alluvial fans, mesas, benches
Down-slope shape: Linear, convex
Across-slope shape: Linear, convex
Parent material: Calcareous eolian deposits

Typical profile

H1 - 0 to 7 inches: neutral, silt loam
H2 - 7 to 11 inches: neutral, silt loam
H3 - 11 to 26 inches: neutral, silty clay loam
H4 - 26 to 60 inches: moderately alkaline, silt loam

Properties and qualities

Slope: 6 to 12 percent
Depth to restrictive feature: More than 80 inches
Natural drainage class: Well drained

Custom Soil Resource Report

Capacity of the most limiting layer to transmit water (Ksat): Moderately high (0.20 to 0.60 in/hr)

Depth to water table: More than 80 inches

Frequency of flooding: None

Frequency of ponding: None

Calcium carbonate, maximum in profile: 15 percent

Salinity, maximum in profile: Nonsaline (0.0 to 2.0 mmhos/cm)

Available water storage in profile: High (about 10.5 inches)

Interpretive groups

Farmland classification: Farmland of statewide importance

Land capability classification (irrigated): 4e

Land capability classification (nonirrigated): 4e

Hydrologic Soil Group: C

Ecological site: Deep Loam (R048AY292CO)

71—Villa Grove-Zoltay loams, 15 to 30 percent slopes

Map Unit Setting

Elevation: 7,500 to 7,600 feet

Map Unit Composition

Villa grove and similar soils: 50 percent

Zoltay and similar soils: 40 percent

Description of Villa Grove

Setting

Landform: Mountainsides, alluvial fans

Landform position (three-dimensional): Lower third of mountainflank

Down-slope shape: Convex, linear

Across-slope shape: Convex, linear

Parent material: Mixed alluvium

Typical profile

H1 - 0 to 4 inches: slightly alkaline, loam

H2 - 4 to 15 inches: slightly alkaline, clay loam

H3 - 15 to 60 inches: moderately alkaline, loam

Properties and qualities

Slope: 15 to 30 percent

Depth to restrictive feature: More than 80 inches

Natural drainage class: Well drained

Capacity of the most limiting layer to transmit water (Ksat): Moderately high (0.20 to 0.60 in/hr)

Depth to water table: More than 80 inches

Frequency of flooding: None

Frequency of ponding: None

Calcium carbonate, maximum in profile: 15 percent

Salinity, maximum in profile: Nonsaline to slightly saline (2.0 to 8.0 mmhos/cm)

Available water storage in profile: Moderate (about 8.1 inches)

Interpretive groups

Farmland classification: Not prime farmland
Land capability classification (irrigated): None specified
Land capability classification (nonirrigated): 6e
Hydrologic Soil Group: C
Ecological site: Brushy Loam (R048AY238CO)

Description of Zoltay

Setting

Landform: Alluvial fans, mountainsides
Landform position (three-dimensional): Lower third of mountainflank
Down-slope shape: Convex
Across-slope shape: Convex
Parent material: Mixed alluvium

Typical profile

H1 - 0 to 19 inches: neutral, loam
H2 - 19 to 23 inches: neutral, cobbly clay loam
H3 - 23 to 36 inches: slightly alkaline, cobbly clay
H4 - 36 to 60 inches: moderately alkaline, cobbly clay

Properties and qualities

Slope: 15 to 30 percent
Depth to restrictive feature: More than 80 inches
Natural drainage class: Well drained
Capacity of the most limiting layer to transmit water (Ksat): Moderately low to moderately high (0.06 to 0.20 in/hr)
Depth to water table: More than 80 inches
Frequency of flooding: None
Frequency of ponding: None
Calcium carbonate, maximum in profile: 15 percent
Salinity, maximum in profile: Nonsaline (0.0 to 2.0 mmhos/cm)
Available water storage in profile: Moderate (about 7.5 inches)

Interpretive groups

Farmland classification: Not prime farmland
Land capability classification (irrigated): None specified
Land capability classification (nonirrigated): 6e
Hydrologic Soil Group: C
Ecological site: Brushy Loam (R048AY238CO)

References

American Association of State Highway and Transportation Officials (AASHTO). 2004. Standard specifications for transportation materials and methods of sampling and testing. 24th edition.

American Society for Testing and Materials (ASTM). 2005. Standard classification of soils for engineering purposes. ASTM Standard D2487-00.

Cowardin, L.M., V. Carter, F.C. Golet, and E.T. LaRoe. 1979. Classification of wetlands and deep-water habitats of the United States. U.S. Fish and Wildlife Service FWS/OBS-79/31.

Federal Register. July 13, 1994. Changes in hydric soils of the United States.

Federal Register. September 18, 2002. Hydric soils of the United States.

Hurt, G.W., and L.M. Vasilas, editors. Version 6.0, 2006. Field indicators of hydric soils in the United States.

National Research Council. 1995. Wetlands: Characteristics and boundaries.

Soil Survey Division Staff. 1993. Soil survey manual. Soil Conservation Service. U.S. Department of Agriculture Handbook 18. http://www.nrcs.usda.gov/wps/portal/nrcs/detail/national/soils/?cid=nrcs142p2_054262

Soil Survey Staff. 1999. Soil taxonomy: A basic system of soil classification for making and interpreting soil surveys. 2nd edition. Natural Resources Conservation Service, U.S. Department of Agriculture Handbook 436. http://www.nrcs.usda.gov/wps/portal/nrcs/detail/national/soils/?cid=nrcs142p2_053577

Soil Survey Staff. 2010. Keys to soil taxonomy. 11th edition. U.S. Department of Agriculture, Natural Resources Conservation Service. http://www.nrcs.usda.gov/wps/portal/nrcs/detail/national/soils/?cid=nrcs142p2_053580

Tiner, R.W., Jr. 1985. Wetlands of Delaware. U.S. Fish and Wildlife Service and Delaware Department of Natural Resources and Environmental Control, Wetlands Section.

United States Army Corps of Engineers, Environmental Laboratory. 1987. Corps of Engineers wetlands delineation manual. Waterways Experiment Station Technical Report Y-87-1.

United States Department of Agriculture, Natural Resources Conservation Service. National forestry manual. http://www.nrcs.usda.gov/wps/portal/nrcs/detail/soils/home/?cid=nrcs142p2_053374

United States Department of Agriculture, Natural Resources Conservation Service. National range and pasture handbook. <http://www.nrcs.usda.gov/wps/portal/nrcs/detail/national/landuse/rangepasture/?cid=stelprdb1043084>

Custom Soil Resource Report

United States Department of Agriculture, Natural Resources Conservation Service. National soil survey handbook, title 430-VI. http://www.nrcs.usda.gov/wps/portal/nrcs/detail/soils/scientists/?cid=nrcs142p2_054242

United States Department of Agriculture, Natural Resources Conservation Service. 2006. Land resource regions and major land resource areas of the United States, the Caribbean, and the Pacific Basin. U.S. Department of Agriculture Handbook 296. http://www.nrcs.usda.gov/wps/portal/nrcs/detail/national/soils/?cid=nrcs142p2_053624

United States Department of Agriculture, Soil Conservation Service. 1961. Land capability classification. U.S. Department of Agriculture Handbook 210. http://www.nrcs.usda.gov/Internet/FSE_DOCUMENTS/nrcs142p2_052290.pdf